

Acer ICONIA TAB

Quick Guide

Acer recommends...

Productivity Software

Work Great with Microsoft® Office 2010 - Express your ideas, solve problems and simplify everyday projects with Office 2010.

Photo editing - Easily edit and print your photos with Windows Live Photo Gallery. Then share them on Facebook, YouTube or Windows Live.

Search & Decide with Bing -- Find and organize the answers you need using Bing™, so you can make faster, more informed decisions.

© 2011 All Rights Reserved.

Acer ICONIA TAB Quick Guide
Original Issue: 03/2011

Model number: _____

Serial number: _____

Date of purchase: _____

Place of purchase: _____

First things first

We would like to thank you for making an Acer computer your choice for meeting your mobile computing needs.

Your guides

To help you use your Acer computer, we have designed a set of guides:

First off, the **setup poster** helps you get started with setting up your computer.

The **ICONIA TAB Generic User Guide** contains useful information applying to all models in the ICONIA TAB product series. It covers basic topics such as using the keyboard and audio, etc. Please understand that due to its nature, the **Generic User Guide** will occasionally refer to functions or features which are only contained in certain models of the series, but not necessarily in the model you purchased. Such instances are marked in the text with language such as "only for certain models".

The **Quick Guide** introduces you to the basic features and functions of your new computer. For more on how your computer can help you to be more productive, please refer to the **ICONIA TAB Generic User Guide**. This guide contains detailed information on such subjects as system utilities, data recovery, expansion options and troubleshooting. In addition it contains warranty information and the general regulations and safety notices for your computer. It is available in Portable Document Format (PDF) and comes preloaded on your computer. Follow these steps to access it:

- 1 Click on  **Start > All Programs > Documentation**.
- 2 Click on **ICONIA TAB Generic User Guide**.



.....

Note: Viewing the file requires Adobe Reader. If Adobe Reader is not installed on your computer, clicking on **ICONIA TAB Generic User Guide** will run the Adobe Reader setup program first. Follow the instructions on the screen to complete the installation. For instructions on how to use Adobe Reader, access the **Help and Support** menu.

First things first	iii
Your guides	iii
Your Acer tablet PC tour	1
Tablet PC	1
Front view	1
Back view	2
Top view	3
Bottom view	3
Left view	4
Right view	4
Booting your tablet	5
Key functions for boot menus	5
Connect the tablet to the keyboard dock	5
Secure the tablet to the keyboard dock	6
Keyboard dock	6
Top view	6
Front view	7
Left view	7
Right view	8
Environment	8
Acer Ring	9
Sync function	10
Clean Disk function	10
TouchBrowser	11
Adding a page to your Favorites	13
My Journal	14
Editing pages	15
Web Clip	15
Acer clear.fi	18
Media content types	18
DMS (Digital Media Server) devices	18
Display media content	18
Save media content	19
Search media	19
Media sharing settings	19
Device Control	20
Using the virtual keyboard	22
SocialJogger	23
Sharing content	25
Settings	26
Acer Backup Manager	27

Contents

Your Acer tablet PC tour

After setting up your computer as illustrated in the setup poster, let us show you around your new Acer computer.

You can enter information into you new computer via the touchscreen or with the keyboard dock.

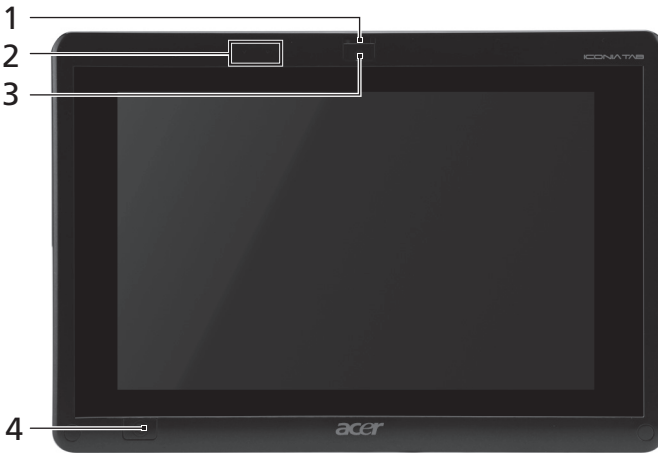


Note: The keyboard dock is optional.

Tablet PC

Your new computer has two components, the tablet and the keyboard dock. The following set of images will show you the Tablet PC. The views are labeled as if you are holding the Tablet with the screen towards you and the cameras at the top.

Front view



No.	Item	Description
1	Latch	Secures the tablet to the keyboard dock when closed.
2	Microphones	Two internal microphones for stereo sound recording.
3	Integrated webcam	Web camera for video communication.

No.	Item	Description
4	Windows key / power status indicator	Press once to open the Start menu or wake tablet from Sleep mode. Press the power button while holding the Windows key to perform the <Ctrl> + <Alt> + function (this is referred to as the "Windows Security Button" in the operating system).

Status indicator color	Power status
Blue	System turned on.
Slow flash: Orange	System in Standby mode.
Flashing: Orange	System entering Hibernate mode.
Off	System in Hibernate mode or turned off.

Back view



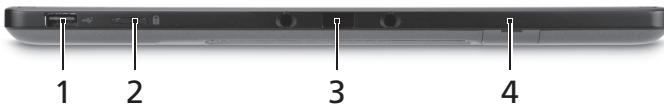
No.	Item	Description
1	Integrated webcam	Web camera for video communication.
2	SIM card slot	Accepts a 3G SIM card (configuration may vary depending on model).
3	Speaker	Delivers audio output.


Top view



No.	Item	Description
1	Ventilation slot	Provides adequate air flow to maintain a safe operating temperature.

Bottom view

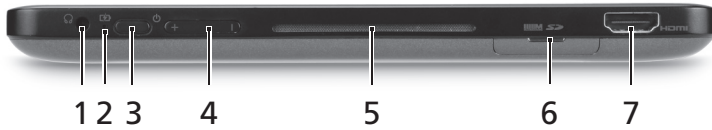


No.	Icon	Item	Description
1		USB 2.0 port	Connect to USB 2.0 devices (e.g., USB mouse, USB camera).
2		Lock switch	Locks the screen orientation.
3		Dock connector	Connects to the supplied keyboard dock. USB port may also be used as a standard USB port.
4		SIM card slot	Accepts a 3G SIM card (configuration may vary depending on model).



Note: Display orientation may be fixed when applications designed for a specific orientation are running. These include games and other full-screen applications. When making video calls, you should always hold the tablet in landscape orientation.

Left view



No.	Icon	Item	Description
1		Headphone jack	Connects to audio devices (e.g., speakers, headphones). Supports compatible 3.5 mm headsets with built-in microphone (e.g. Acer smart handheld headsets).
2		Battery LED	Indicates the computer's battery status. 1. Charging: Amber. 2. Fully charged: Blue when plugged in.
3		Power button	Press to turn the tablet on; press again to place the tablet in Sleep mode. Press and hold to turn the tablet off.
4		Volume key	Press to increase or decrease volume.
5		Ventilation slot	Provides adequate air flow to maintain a safe operating temperature.
6		2-in-1 card reader	Accepts Secure Digital (SD), MultiMediaCard (MMC). Note: Push to remove/install the card. Only one card can operate at any time.
7		HDMI port	Supports high-definition digital video connections.

Right view



No.	Icon	Item	Description
1		DC-in jack	Connects to an AC adapter.

Booting your tablet

There are three ways to boot your tablet:

- 1 Quick boot: Press the power button; no external USB keyboard support before Windows boots; always boots from the SSD; overrides BIOS settings.
- 2 Normal boot: Simultaneously press the power button and the Windows key; supports USB keyboard, <F2> and <F12> hotkeys; this boot sequence is used if Windows shuts down abnormally or after making changes to BIOS.
- 3 Boot from recovery discs: Press the power button, Windows key and volume up key simultaneously. Use this if you need to restore your operating system to factory defaults from the supplied recovery discs. Please refer to **Recovering your system** in the User Guide.

Key functions for boot menus

For menus displayed before Windows boots:

Windows key: Select the highlighted menu option.

Volume up/down: Move the cursor up or down.

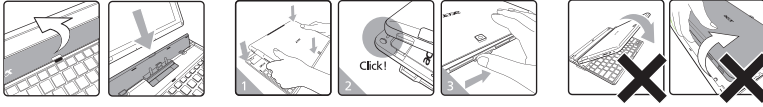
Connect the tablet to the keyboard dock

Align the two arrows printed beneath the screen with the two pins on the keyboard dock. Press the tablet down.



Secure the tablet to the keyboard dock

Place the tablet on the dock, ensuring you hear two clicks. Use the latch to secure the tablet.



Note: Remove the tablet by releasing the latch and lifting the tablet from the camera side.



Warning: Do not lift the tablet from the speaker side.

Keyboard dock

The following set of images show you the optional keyboard dock.

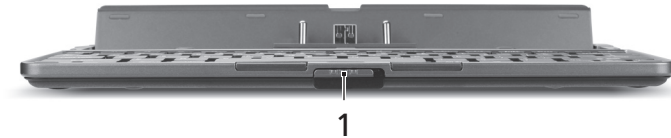
Top view



No.	Item	Description
1	Dock connector	Connects to the tablet.
2	Keyboard	A standard keyboard with full-size keys.

No.	Item	Description
3	Acer FineTrack pointing device	Pointing device to control cursor movement.
4	Latch	Secures the tablet to the keyboard dock when closed.
5	Left and right buttons	Function like the left and right mouse buttons.



Front view



No.	Item	Description
1	Latch	Secures the tablet to the keyboard dock when closed.


Left view



No.	Icon	Item	Description
1		Ethernet (RJ-45) port	Connects to an Ethernet 10/100/1000-based network.
2		USB 2.0 port	Connect to USB 2.0 devices (e.g., USB mouse, USB camera).

Right view



No.	Icon	Item	Description
1		USB 2.0 port	Connect to USB 2.0 devices (e.g., USB mouse, USB camera).







Environment

- Temperature:
 - Operating: 5 °C to 35 °C
 - Non-operating: -20 °C to 65 °C
- Humidity (non-condensing):
 - Operating: 20% to 80%
 - Non-operating: 20% to 80%

Acer Ring

Acer Ring incorporates a number of useful functions and tools in one easy-to-use interface. Tap the touchscreen with all five fingers at once to display Acer Ring.



Icon	Item	Description
	Sync	Opens the data synchronization tool.
	Game	Opens Acer GameZone.
	Calculator	Opens the Windows Calculator.
	Webcam	Opens the Acer CrystalEye webcam utility.
	Snipping tool	Opens the Windows Snipping Tool.
	Disk Clean	Opens the disk cleaning tool.
	Device Control	Adjust settings for your computer (please refer to Device Control on page 20).

On one side of Acer Ring you can see a selection of AppCards. You can scroll through the applications and tap on a card to open the application.

Sync function

Press to run all existing sync/backup jobs, including sync jobs created in the Migration and Synchronization Wizard. Please refer to **Acer Backup Manager** on page 27.

Clean Disk function

The Clean Disk functions lists files that have not been used recently and have been successfully backed up. You can delete the files on that list, knowing you can restore these files from backup copies at a later date if required.

TouchBrowser

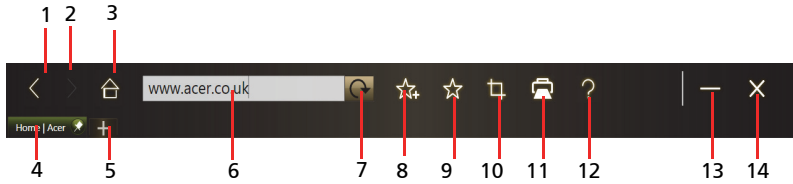
TouchBrowser is specifically designed to offer you a more comfortable web surfing experience when using touch input. Open Acer Ring and tap the TouchBrowser AppCard to launch the browser.



The toolbar at the top of the screen gives you easy control over the open page.

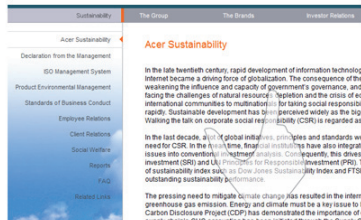


To enter a website address, tap the URL bar. A keyboard icon will display, allowing you to open a virtual keyboard and enter text, or use handwriting to enter the URL.



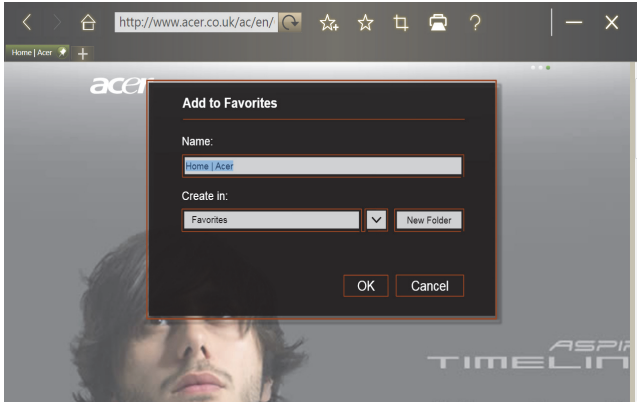
No.	Item	Description
1	Back	Go back one page.
2	Forward	Go forward to the next page in the browsing history.
3	Home	Open the defined home page.
4	Tabs	Shows the pages currently open.
5	Open new tab	Tap to open a new tab.
6	URL bar	Shows the address of the current page.
7	Refresh	Refreshes the current tab content.
8	Add to favorites	Add the current page to your favorites.
9	Favorites	Open the list of your favorites / history.
10	Web Clip	Crop a part of the web page for use in My Journal or Scrapbook .
11	Print	Print the page.
12	Help	View the Help file.
13	Minimize	Minimizes the browser.
14	Close	Closes the browser.

You can use a pinch action to zoom in to content on the page.



Adding a page to your Favorites

To add a page to your Favorites, tap the **Add to Favorites** icon, give the page a name (the page title will be used by default) and select a folder to save the URL to.



My Journal

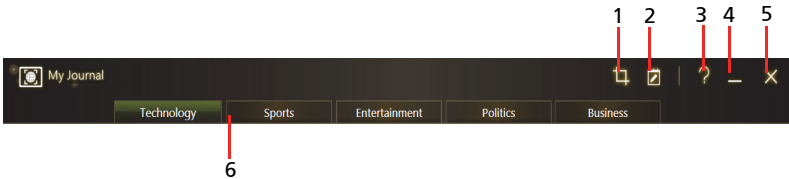
My Journal is a handy place for you to keep clippings of websites and other information you may want to refer to later. You can organize the information you wish to view from a number of sources on a single, easy-to-view page.

Open Acer Ring and scroll through the AppCards to My Journal. Tap the AppCard to open the application.





Website content is automatically updated each time you open the journal page.

Use the tabs along the top of the screen to switch between your journal pages, or tap the icons on the toolbar to perform various functions.



No.	Item	Description
1	Web clip	Crop a part of the web page for use in My Journal.
2	Edit	Edit the content on the journal pages.
3	Help	View the help file.
4	Minimize	Minimizes My Journal.
5	Close	Closes My Journal.
6	Tabs	Shows the pages in your journal.




Note: When you have finished editing your clips, tap  to return to viewing mode. If you want to edit a web clip at a later time, tap the edit icon  to enter edit mode.

Editing pages

In edit mode, you can resize web clips by dragging the corners of the web clip to the size you want.

You can also move web clips to other pages by dragging the web clip to the tab for the page you want to move the clip to.

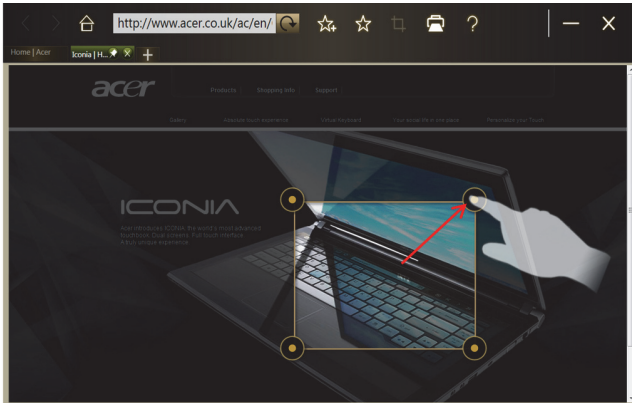
Tap the name of a tab to rename the tab. You can use either the virtual keyboard or the keyboard on the dock. When you have finished, tap .

Web Clip

The web clip tool allows you to clip parts of web pages to save them to My Journal. Once you have a page open in your browser, tap the **Web clip** icon.



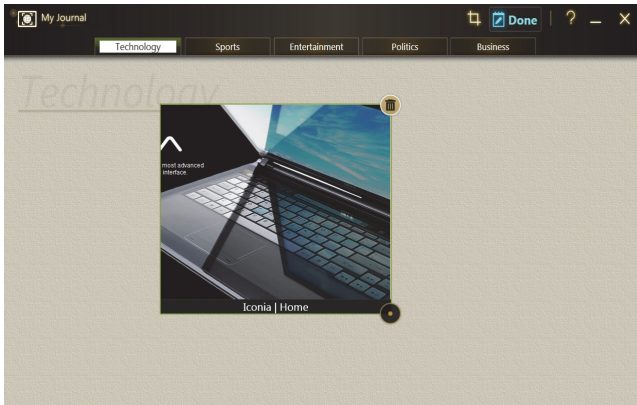
Tap the browser screen to select the area you want to crop; tap and drag on any of the circles on the corner of the crop window to expand it to include all the information you want to capture.



When you have finished selecting the area you want to crop, tap the area to open a menu that will allow you to paste the content into **My Journal** or **Copy** it to the clipboard. You can also **Save bitmap as...** or **Discard** the web clip.



In My Journal, tap a clip to select it, then you can position it on the page and stretch it by dragging the corners to the desired size.



To delete a web clip, tap the clip in **My Journal** and tap the trash can icon.



.....

Note: If the web clip comes from a site that requires a login, the clip will be grayed out and a key icon will show to indicate that it requires a login. Tap the clip to open the login page in My Journal.

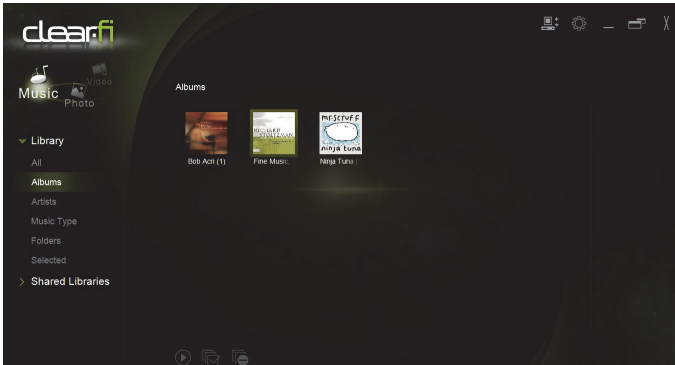


.....

Note: If an Internet connection to the website is unavailable, the clip will indicate that the connection is unavailable. Tap the clip to refresh the data.

Acer clear.fi

Acer clear.fi is a home media database viewer and controller. It allows you to browse media content, such as music, photos, or videos, on devices that are on the same network.



Media content types

When you launch Acer clear.fi, you can choose the media content type. There are three types defined: Video, Music, and Photo.

DMS (Digital Media Server) devices

DMS devices include DLNA-compliant personal computers and NAS (Network Attached Storage) devices. These devices store content and make it available to DMP (Digital Media Player) and DMR (Digital Media Renderer) devices. Acer clear.fi will list DMS devices on the main screen, and you can choose ALL DEVICES or a specific device to browse the media stored.

Display media content

If you want to display media content on your computer, you just need to double-click the media content. If you want to display the media content on a remote device, you need to do the following:

- 1 Choose the media content.
- 2 Select **Play To**.
- 3 Select the files you wish to play, then send them to the remote device. The target icon will change to display the status. You can view playback controls and progress on the target.

Save media content

If you want to save media content to a remote device, you need to do the following:

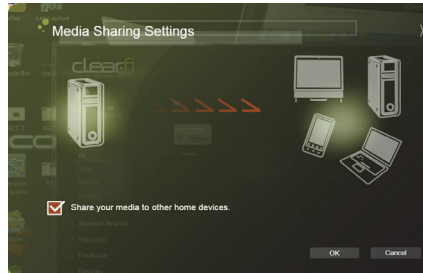
- 1 Choose the media content.
- 2 Select **Save To**.
- 3 Select the files you wish to save, then send them to the remote device. The target icon will change to display the status. You can view the save status progress bar on the target. Click the target to display a dialog box that allows you to cancel the process.

Search media

If you want to search your media content, you need to choose the media type first; then enter a keyword in the search bar. Acer clear.fi will list the media content that matches the keyword.

Media sharing settings

You can adjust settings according to your requirements.



Device Control

Device Control is a convenient way for you to control the screen brightness and adjust the volume to suit your needs. It also indicates the location of each port on your computer and allows you to turn your connectivity devices on or off, select a power scheme, lock your computer, turn it off, or place it in Sleep mode.

The Device Control UI also indicates if the tablet is docked:



Or if the tablet is undocked:



If you have any devices plugged into a USB port or the HDMI port, Device Control will show what type of device is plugged into each port. If you have

inserted a storage device into a USB port, you may tap the USB icon to open a context menu. Tap **Open** to view the files in Windows Explorer.

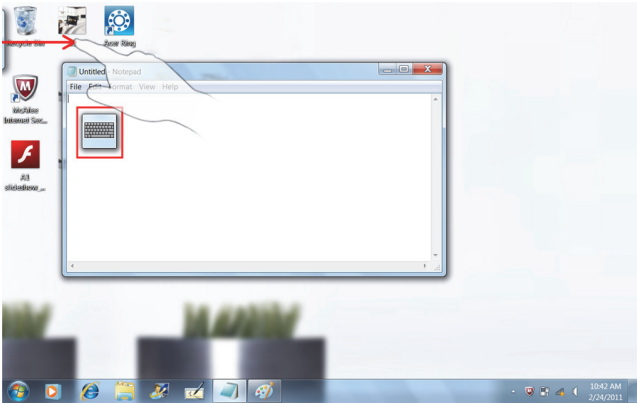


To safely remove the device, select **Eject** from the menu.

There is also a context menu available for the HDMI connector.

Using the virtual keyboard

Microsoft Windows provides a convenient virtual keyboard for entering data. To use the keyboard, tap a text box to display the keyboard icon. Tap the icon to open the keyboard. Alternatively, tap and drag the keyboard tab displayed on the left-hand side of the screen.

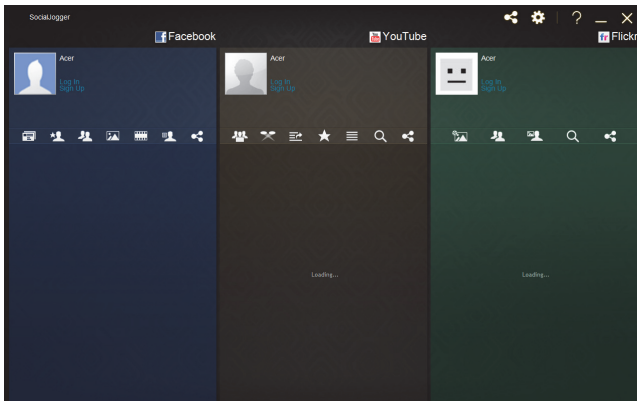


SocialJogger

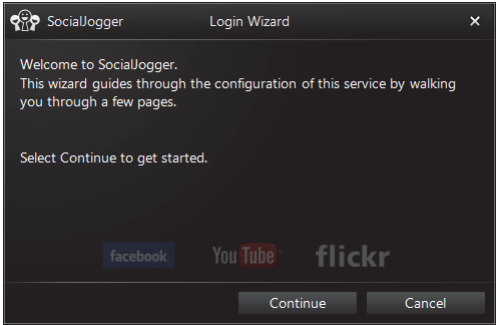
Open Acer Ring and tap the SocialJogger AppCard.



SocialJogger gives you one-touch access to popular social networking sites: Facebook, YouTube and Flickr.

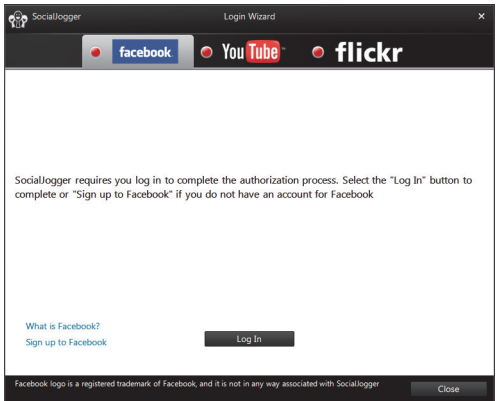


Tap **Log In** to open the login wizard. You can log into all three supported services from a single login wizard. If you don't already have an account with the supported services, you can create an account from the wizard.



Tap **Continue** to log into your account(s):

Facebook



YouTube

Sociallogger Login Wizard

facebook YouTube flickr

Please sign in to your YouTube account

Username:

Password:

Remember me

[Log In](#)

[Forgot your username?](#)
[Forgot your password?](#)

New to YouTube?
Signing up is easy. After providing some basic information, you can join YouTube for free with just a few clicks. With YouTube, you can broadcast your video to the world.

[What is YouTube?](#)
[Sign up to YouTube](#)

[Close](#)

Flickr

Sociallogger Login Wizard

facebook YouTube flickr


Sociallogger requires you log in to complete the authorization process. Select the "Log In" button to complete or "Sign up to Flickr" if you do not have an account for Flickr

[What is Flickr?](#)
[Sign up to Flickr](#)

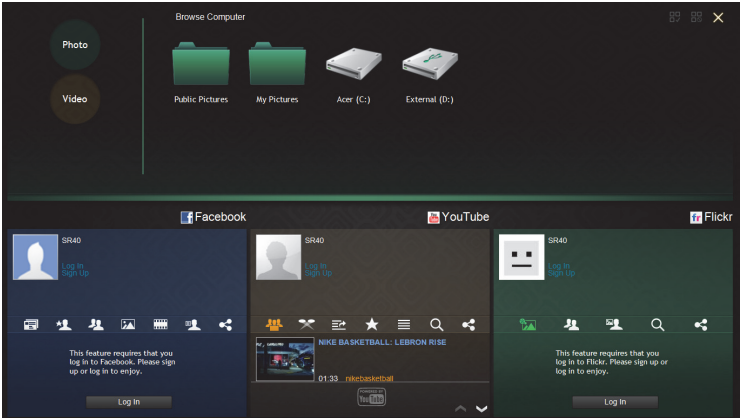
[Log In](#)

[Close](#)

Sharing content

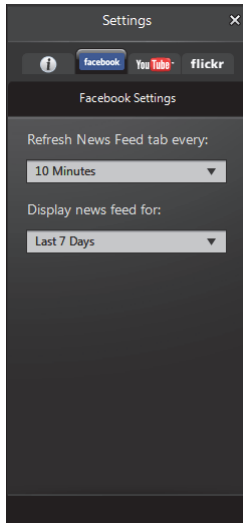
You can upload content to each service by tapping the **Share on** icon  in the upper right-hand corner of the page. This will open a file browser above the

three service pages. Drag and drop the content you want to share to the desired service.



Settings

You can adjust the settings for each service by tapping the **Settings** icon. This opens the settings window with a tab for each service.



Acer Backup Manager

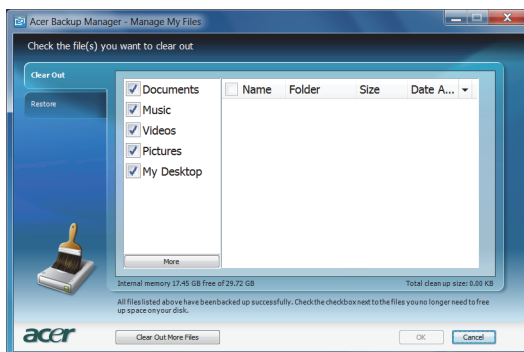
Acer Backup Manager includes a Migration and Synchronization Wizard which runs after Windows 7 setup is complete. Additionally, you can launch it by double-clicking the desktop shortcut.

It helps you migrate system settings (e.g., email settings and Internet Explorer Favorites) from an existing computer to your new tablet PC.



It also establishes a synchronization relationship between the two computers, so that all files in the Documents, Pictures, Music, and Videos libraries on the tablet PC will be kept synchronized with their shadows on the other PC.

Acer Backup Manager also includes the Disk Clean function (please refer to [Clean Disk function on page 10.](#))



Free Manuals Download Website

<http://myh66.com>

<http://usermanuals.us>

<http://www.somanuals.com>

<http://www.4manuals.cc>

<http://www.manual-lib.com>

<http://www.404manual.com>

<http://www.luxmanual.com>

<http://aubethermostatmanual.com>

Golf course search by state

<http://golfingnear.com>

Email search by domain

<http://emailbydomain.com>

Auto manuals search

<http://auto.somanuals.com>

TV manuals search

<http://tv.somanuals.com>