

**INSTRUCTION MANUAL**  
**2 DOORS NO FROST REFRIGERATOR**

**MODEL:**

**HRF422TW1**

**HRF422TS1**

**HRF503TW1**

**HRF503TS1**

**HRF502TS1**

**INDEX**

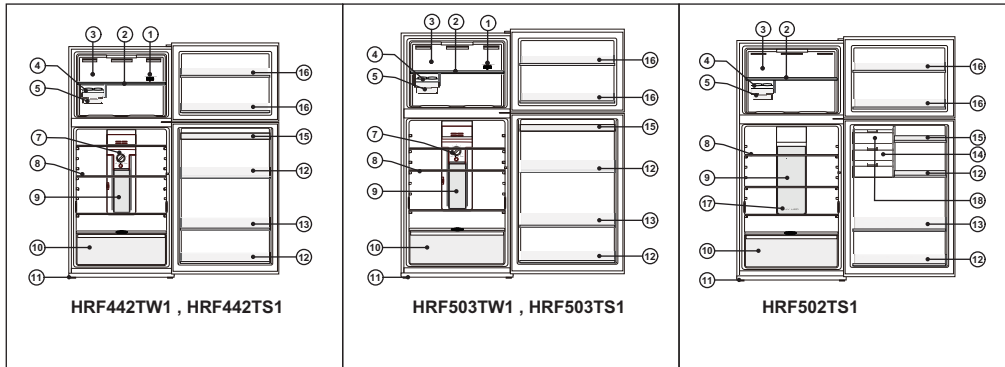
<b>FEATURES</b>	<b>2</b>
<b>INSTALLATION</b>	<b>3</b>
<b>OPERATION</b>	<b>3</b>
<b>DIGITAL DISPLAY OPERATION</b>	<b>4</b>
<b>CLEANING</b>	<b>8</b>
<b>CAUTION</b>	<b>9</b>
<b>TROUBLE SHOOTING</b>	<b>11</b>

0060520803

Printed : 22 Jun.'15

**Haier**

## FEATURES

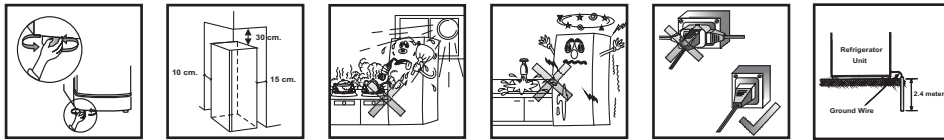


- |                               |                                |
|-------------------------------|--------------------------------|
| 1. Temperature Control Knob   | 10. Vegetable Crisper          |
| 2. Freezer Shelf              | 11. Adjustable Leg             |
| 3. Freezer Compartment        | 12. Canned Food Rack           |
| 4. Twist Ice Maker            | 13. Bottle Rack                |
| 5. Ice Cube Box               | 14. Utility Box                |
| 6. Chilled Room               | 15. Egg Rack                   |
| 7. Multi-Airflow Control Knob | 16. Utility Rack               |
| 8. Refrigerator Shelf         | 17. UV+LED+Platinum deodorizer |
| 9. Refrigerator Lamp (LED)    | 18. Water Tank                 |

Model	Fresh food compartment (Gross storage)	Freezer compartment (Gross storage)	Overall (W x H x D (mm.))	Packing (W x H x D (mm.))
HRF422TW1, HRF422TS1	254 Liter	110 Liter	723 x 694 x 1724	774 x 748 x 1816
HRF503TW1, HRF503TS1	336 Liter	127 Liter	723 x 694 x 1809	774 x 748 x 1901
HRF502TS1	336 Liter	127 Liter	723 x 749 x 1809	774x 803 x 1901

## INSTALLATION

1. Select a place with strong, level floor. If the floor is not quite level, adjust the height of the feet accordingly.
2. Allow sufficient clearance between the refrigerator's back, also the side wall, so the door can open fully and to minimize noise.
3. Avoid direct sunlight and heat. Direct sunlight may affect the enamel coating. Heat sources nearby will cause higher electricity consumption.
4. Avoid very moist place. Too much moisture in the air will cause frost to form very quickly on the evaporator, and the refrigerator will have to be defrost very frequently.
5. After re-located, leave the fridge standing 3-6 hours before switching it on. This intend to ensure a proper cooling system operation.



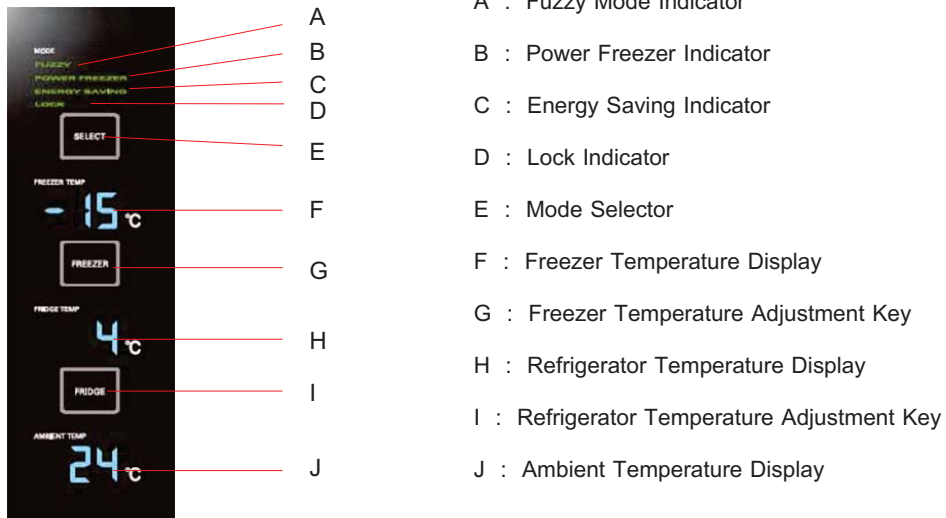
## OPERATION

### ■ Make a test run

1. Your refrigerator is usually cleaned by manufacture, however you may want to clean it before using with a soft towel cloth.
2. After cleaned, replace all parts in proper.
3. Keep the door open and plug the power cord into its own electrical outlet. The interior lamp should lit.
4. Properly close the door.

## **Digital Display Operation**

( HRF502TS1)



### **Fuzzy Mode**

In the Fuzzy Mode, the temperature inside the appliance is adjusted automatically according to variations of the ambient temperature. Press key E upon, indicator A lights up an Fuzzy mode is entered.

Press key E once again, upon which indicator A goes off and Fuzzy mode is cancelled.

### **Power Freezer**

It has been scientifically proven that a power freezer type device is necessary to freeze foods quickly and thoroughly. Press key E, upon which indicator B lights up and the power freezer action is turned on. Press key E again, upon which indicator B goes off.

### **Energy Saving**

The refrigerator minimises energy consumption but maintains the temperature setting.

Press key E, upon which indicator C lights up and energy saving is turned on. Press key E again, upon which indicator C goes off.

**Remark :** If Fuzzy mode, power freezer or energy saving is activated, Freezer and Refrigerator temperature cannot be adjusted.

## ■ Freezer temperature adjustment



Press key G, upon which indicator F will flash. Each time key G is pressed, the temperature setting is decreased by 1°C. Once the maximum of -24°C is reached, the temperature will return to -14°C

## ■ Refrigerator temperature adjustment



Press key I, upon which indicator H will flash, Each time key I is pressed, the temperature setting is decreased by 1°C. Once the maximum of 8°C is reached, the temperature will return to 1°C

**Remark :** Freezer / Refrigerator temperature will indicate last setting temperature.

### **Remark:**

- After insert plug to power supply 30 seconds, display panel will go off if no any adjust on display.
- Display Panel will go off within 30 seconds after last press and will tuned on again when pressed.

## ■ Locking and Unlocking the appliance



To lock the appliance, Press and hold button E for 5 seconds, under the lock condition indicator D will light up.

To unlock the appliance, Press and hold button E for 3 seconds, indicator D will goes off.

**Remark :** The functions and temperature adjustment cannot be adjust when appliance has been locked.

## ■ Power save function under lock condition,

To enter Power save function under lock condition, Press and hold button E and G 5 seconds. Under Power save function interior light and freezer display are not turned on when each door opened.

Press and hold button E and G 5 seconds, Power save function is cancelled.

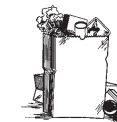
## ■ Open door warning

If any door is open for more than 1 minute, the door alarm function will start to remind you to close the door.



## ■ Food Storage

1. Refrigerated air goes down at the rear of the fresh food compartment and rises up at the front. Then, store the foodstuffs such as fish and meats which require quick refrigeration to the rear of the compartment.
2. Leave spaces among foodstuffs to help air circulation.
3. Foodstuffs which are easily dried should be well wrapped with waxed paper, aluminum foil or plastic film.
4. Wrap fish and smoked meats in moisture-vapor-proof material to prevent transfer for odors.
5. Pre-cool hot foods, wrap them with plastic film or put them in the airtight receptacle.
6. Wipe the water on the surface of the bottles before storing them.
7. Be sure not to store bottles such as beer, cokes, etc. in the freezer compartment.
8. Do not put vegetables which are liable to freeze at the rear part of the shelves.
9. If planning to keep fresh fish and meats for a long period, wrap them in freezer paper and store in the freezer compartment.



## ■ Lamp Replacement

If the illuminating does not work properly. In case of the replacement LED is needed, it must be replaced by its service agent or similarly qualified person in order to avoid hazard.

## ■ UV+LED

Inside the refrigerator compartment UV-LED + Platinum Deodorizer system is installed, which is high efficiency eliminates the bacteria cause decomposition in a food. This system operates (With a Yellow-Beam indicator).

## ■ Nano + Vitamin C

With refrigerant to disperse the bacteria and odor control to freeze the vegetable and will keep the freshness of vegetables fruits. It will maintain the nutritional value of food long lasting and increases the vitamin filter. That includes the bacteria control to make the vegetables and fruits will not lose it food value, with deodorizer filter.

## **CLEANING**

1. Before cleaning the refrigerator, you should always unplug it from the electrical outlet and remove all food.
2. Both exterior and interior of refrigerator, wipe with damp and warming water until dry.
3. Cleaning internal accessories using a warm water and dry it with a soft clean cloth.
4. Cleaning door gasket with warm water and dry it with a soft clean cloth.
5. Wipe the control knob with a soft clean cloth. Never wash it with water because this will cause an electric shock.
6. Never use brushes, acids, chemical thinner, gasoline or benzine for cleaning any part of the refrigerator.
7. To remove odors from your fridge, mix a lemon skin and warm water. Wipe thoroughly on odors surface and dry with a soft clean cloth. Do not use cologne, air freshener or any other perfume.
8. Cleaning inside of the refrigerator and door gasket once a month. It is the best to clean the freezer compartment every time when it is defrosted.



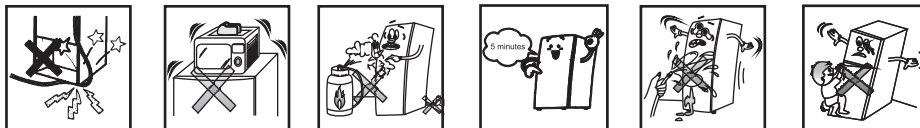
## **CAUTION**

1. Do not insert the power plug for many products at the same time or do not share other product to the same power supply socket with refrigerator.
2. Set the power plug free from the back side of the refrigerator. Damaged power plug may cause fire due to overheating.
3. Be careful not to place the power cord underneath of the refrigerator or other heavy objects. Damage to the power cord could cause a short circuit and fire.
4. If the supply cord is damaged, it must be replaced by the manufacturer or its service agent or a similarly qualified person in order to avoid a hazard.
5. Do not place hot container high temperature or hot object on top of refrigerator.
6. Do not place the refrigerator close to inflammable or gas area, don't unplugged during gas leakage due to can cause sparking fire and explosion.
7. Do not place water container on the top of refrigerator.
8. Do not install the refrigerator in a moist or wet place.
9. Do not insert the power plug with a wet hand.
10. Do not try to service the refrigerator yourself, please contact service agent.
11. Be sure grounding connection to prevent electric shock.
12. Do not take out the power plug by pull out the power cord.
13. Long period power failure such as power fluctuate, should promptly unplug the power cord and leave at least 5 minutes before plugging in again. It will help prolong refrigerator and compressor life.
14. Frequently open door during the power failure should cause too fast losing cool.
15. If the door is not properly close it should cause high electrical consumption and food in refrigerator become spoil.
16. When cleaning the refrigerator do not splash water directly to the refrigerator. Follow the cleaning instructions described in this manual.
17. Do not use a soaked water cloth wipe the refrigerator due to water may drop into electrical parts and cause short circuit.
18. Do not use inflammable sprays near the refrigerator, because there is a danger of igniting.
19. Do not hang on or climbing the refrigerator which will cause it collapse.
20. This appliance is not intended for use by persons (including children) with reduced physical, sensory or mental capabilities, or lack of experience and knowledge, unless they have been given supervision or instruction concerning use of the appliance by a person responsible for their safety.

21. Children should be supervised to ensure that they do not play with the appliance.
22. When not using refrigerator for long period, should disconnect the power plug, remove all the foods off from compartment, defrosting and clean interior and exterior parts then open the door until the unit dry and properly close the door.
23. This fridge is Cyclopentane insulation, should be kept away from heat or flame when it isn't properly used.
24. Do not store explosive substances such as aerosol can with flammable propellant in this appliance.
25. This appliance is intended to be used in household.

*Be ensure this refrigerator is disposed of correctly, you will help prevent potential negative consequences of environment and human health, which could other wise be caused by inappropriate waste handling of this product. For more detail, please contact your local city office, your household waste disposal service.*

- WARNING : Keep ventilation openings, in the appliance enclosure or in the built-in structure, clear of obstruction.
- WARNING : Do not use mechanical devices or other means to accelerate the defrosting process, other than those recommended by the manufacturer.
- WARNING : Do not damage the refrigerant circuit.
- WARNING : Do not use electrical appliances inside the food storage compartments of the appliance, unless they are of the type recommended by the manufacturer.



***“This refrigerator may contain the flammable refrigerant isobutane - R600a.”***

***It is hazardous for anyone other than an Authorised Service Person to service this appliance. In Queensland - the authorized Service Person MUST hold a Gas Work Authorisation for hydrocarbon refrigerants, to carry out Servicing or repairs which involve the removal of covers.***

## **TROUBLE SHOOTING**

Before you call for service please check the table below. Your problems could be easily rectified. If you still need service, please contact the store where you purchased or the nearest service center.

<b>When</b>	<b>Check if ...</b>
<b>Not operating ...</b>	<ul style="list-style-type: none"> <li>● Power supply cord is unplugged.</li> <li>● Temperature control in "0" or "OFF" position.</li> <li>● If home fuse blown or circuit breaker off ?</li> </ul>
<b>Warmer than usual ...</b>	<ul style="list-style-type: none"> <li>● Too frequent or too long door openings.</li> <li>● Check the temperature control dial setting.</li> <li>● Large amounts of food placed in refrigerator.</li> <li>● You put warm food in the refrigerator.</li> </ul>
<b>Unusual sounds ...</b>	<ul style="list-style-type: none"> <li>● The floor is weak or uneven.</li> <li>● Make sure the back of the refrigerator does not touch the wall.</li> </ul>
<b>Motor operates for long periods ...</b>	<ul style="list-style-type: none"> <li>● Normal when refrigerator is first delivered to your home - usually requires 24 hours to completely cool down.</li> <li>● Large amounts of food placed in refrigerator to be cooled or frozen.</li> <li>● Hot weather - frequent door openings. Door left open.</li> <li>● Temperature control is set too cold.</li> </ul>
<b>Moisture collects inside ...</b>	<ul style="list-style-type: none"> <li>● Too frequent or too long door openings.</li> <li>● In humid weather, air carries moisture into refrigerator when door is opened.</li> <li>● You put warm food in the refrigerator.</li> </ul>

**Note :** Normal working unit, the back and side cabinet should be warm.

## Free Manuals Download Website

<http://myh66.com>

<http://usermanuals.us>

<http://www.somanuals.com>

<http://www.4manuals.cc>

<http://www.manual-lib.com>

<http://www.404manual.com>

<http://www.luxmanual.com>

<http://aubethermostatmanual.com>

Golf course search by state

<http://golfingnear.com>

Email search by domain

<http://emailbydomain.com>

Auto manuals search

<http://auto.somanuals.com>

TV manuals search

<http://tv.somanuals.com>