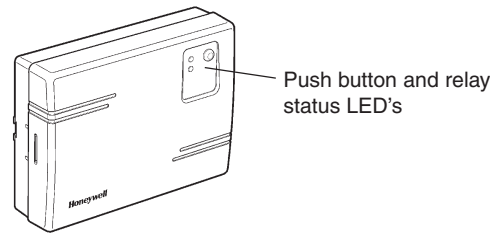


## HC60NG Relay Box Controls Layout

The relay box will normally be found mounted close to the boiler.



## What does it mean when the HC60NG relay box green LED is ON?

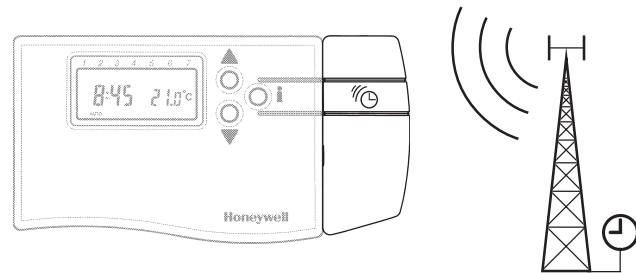
The green LED indicates normal operation of the radio frequency system. When the green LED is ON the boiler is also ON. When the LED is OFF the boiler is OFF.

## When do I need to use the push button?

You should use the push button to control your boiler only when the RF communication is lost (see the CM67NG Trouble-Shooting Guide).

## What other accessories can I buy for the CM67NG?

**Automatic Time Setting (ATS) "Add-On" Module \***  
(Part No. Q6667B1015)



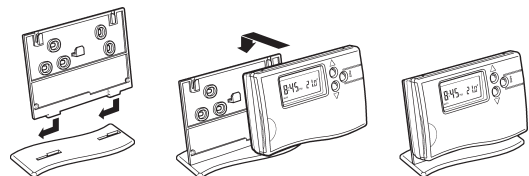
The ATS module picks up a daily time signal from a transmitter in the UK and corrects the time on the CM67NG display. So:

- You never need to set or adjust the time
- There is no need to adjust the unit by +/- 1 hour in summer / winter since the unit does this automatically
- Your CM67NG is the most accurate clock in your home so you can use this information to set-up all your other clocks.

\* Not available in all Geographic Regions depending on transmitter range and home location

## Table stand for the room unit (Part No. F42010248-002)

If you do not want to mount the room unit on the wall you can use optional table stand, ask your installer for details



\*Note: The room unit must be located in a location where reliable communication was proven. Advise your installer where you would like to position the room unit and they will check if the RF communication is reliable in the selected location(s)

## What if something happens to my heating system? How can I check that the CM67NG is working?

See the troubleshooting guide below. If you need assistance after this call your installer.

## CM67NG Trouble-Shooting Guide

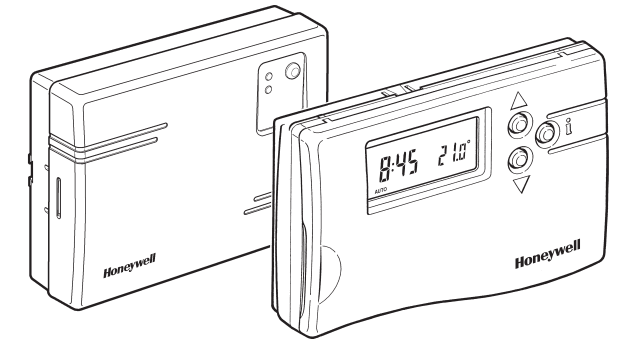
Symptom	Possible Cause	Remedy
Blank display	No batteries	Check that the batteries are in the battery compartment and that the paper tab has been pulled out
	Wrong battery orientation	Check that the batteries have been installed in the correct orientation
	Exhausted batteries	Replace batteries
Display shows flashing 'battery' symbol	Improper battery compartment insertion	Remove battery compartment and re-insert
	Batteries need replacing	Change batteries as described previously
Display shows 'flame' symbol but heating does not switch on	The heating is not required at this moment	The heat demand is sent to the relay box as a value between 0-100%. The relay box will adjust the boiler on time to meet this requirement. That is why the heating will be off sometimes even if the 'flame' symbol is displayed. To check if RF system is communicating properly press the TEMPERATURE UP button to increase the set temperature a few degrees above the current temperature. The heating should come on after a few seconds
	Boiler switched off	Switch the boiler on
Display works but heating does not switch on (HC60NG LEDs are off or green one is on)	Wrong electrical connection	Call electrical installer to check the boiler and relay box power supply as well as the connection between the boiler and the relay box
	RF communication lost due to the wrong location of the room unit	Hook the room unit back on the wall bracket or replace the room unit on the table stand to the position where RF communication was reliable.
HC60NG red LED is constantly on or flashing	RF communication fault	Call installer  NOTE: You can control the boiler manually when the RF communication is lost: Press the HC60NG push button to switch the boiler on and off. When the green LED is on – the boiler is on.
	CM67NG not set correctly for your system	Call installer
Heating switches on or off too slowly or too quickly	CM67NG not set correctly for your system	Call installer
Temperature swings between too hot and too cold	CM67NG not set correctly for your system	Call installer
Display show 'spanner' symbol	Fault in the CM67NG	Remove the battery compartment and re-insert it. If the 'spanner' symbol does not clear itself in a few minutes call the installer

### Warning.

This product and its associated documentation and packaging are protected by various intellectual property rights belonging to Honeywell Inc and its subsidiaries and existing under the laws of the UK and other countries. These intellectual and property rights may include patent applications, registered designs, unregistered designs, registered trade marks, unregistered trade marks and copyrights and also include the following UK registration rights:  
UK patent application number 98062207.8  
UK registered design numbers 2073334, 2073340 and 2073343.



## RF Programmable Thermostat CM67NG



## What is an RF Programmable Thermostat?

A Honeywell Radio Frequency (RF) programmable thermostat is a thermostat that controls your heating system so that you can have comfortable temperatures when you are at home and energy savings when you are out. With RF communication there is no need to provide a wired connection between thermostat and boiler. The CM67NG can therefore be installed without disrupting your room decor. These instructions explain how to program and operate your CM67NG to get the most comfort at the least cost.

## What will the CM67NG Programmable Thermostat do for me?

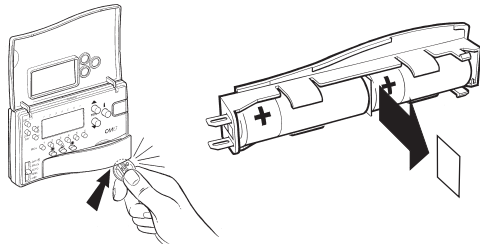
- **Wireless connection** to the boiler allows you to mount the CM67NG in your room without disrupting the decor
- **Armchair programming** lets you set up your CM67NG while resting comfortably in your armchair
- **Optimum Start** means that the CM67NG will switch on your heating system so that your desired comfort temperature is reached by the start of the program period and thus avoid unnecessary boiler firing
- **Attractive slim styling** compatible with any room decor
- **7 day program** lets you set the CM67NG to match your weekly lifestyle
- **6 daily independent temperature levels** let you set any 6 temperatures from 5 to 30°C at any time each day, to match your daily lifestyle
- **Party button** lets you temporarily maintain (or adjust) the current temperature for 1 - 23 hours. Useful when you have friends round or go out of the house for a short while
- **Day Off button** copies Sunday's program into tomorrow so that you can make the CM67NG follow the Sunday program if you have a day off during the week
- **Holiday button** saves energy by letting you reduce the temperature for 1 to 99 days while you are on holiday, returning to normal operation on the day you return
- **Memory** holds the user program indefinitely so that it is never lost even if you take the batteries out

## What is Optimum Start?

Instead of switching on the heating at the set time every day, the CM67NG will delay the start time to the latest possible moment, so that unnecessary heating is avoided. All you have to do is set the time when you want comfort temperature and CM67NG will then decide when to turn the heating on, thereby ensuring your comfort.

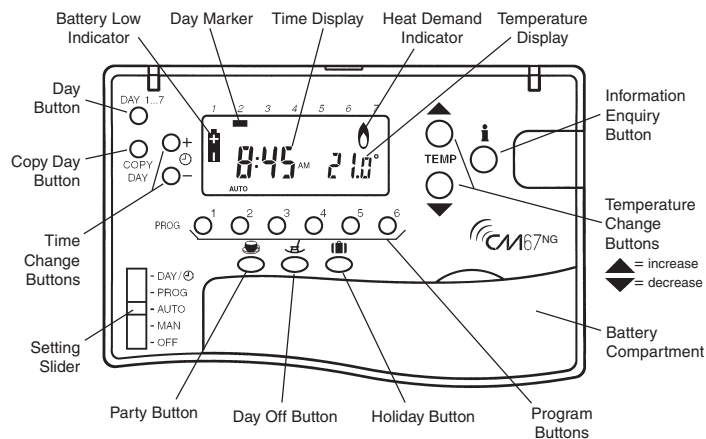
## How do I install the batteries?

- Lift up the front flap to reveal the battery compartment. Open the battery compartment by inserting a coin underneath the bottom right edge of the flap and lift out.
- Pull the paper tab out to activate the 2 AA LR6 Alkaline Batteries included and push the battery compartment firmly back into the front of the unit. After a pause the unit will now display information.



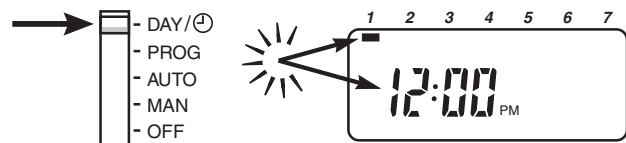
## CM67NG Controls/Display Layout

The diagram below details the key button functions and display information.



## How do I set the time and day?

- Move the slider to **DAY / ☉**. The time and day marker will flash to indicate they can be changed.



- Press **☉ + or -** until the correct time is displayed. Make sure that **AM** or **PM** is correct. Each button press will change the time by one minute and stop the display from flashing. Holding the button down for a few seconds will change the time slowly at first, then quickly.
- Press **DAY 1..7** until the day marker is positioned under the correct day (**DAY 1** is Monday). Each button press moves the day marker by one day.

## How do I get started with the built-in temperature program?

Move the slider to **AUTO**. The CM67NG will now control your heating using the built-in temperature program:-

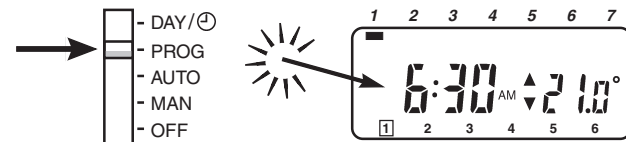
		Monday to Friday					
Program		1	2	3	4	5	6
Time		06:30	08:00	12:00	2:00	6:00	10:30
Temperature		21°C	18°C	21°C	18°C	21°C	16°C

		Saturday and Sunday					
Program		1	2	3	4	5	6
Time		08:00	10:00	12:00	2:00	6:00	11:00
Temperature		21°C	21°C	21°C	21°C	21°C	16°C

## How do I set my own temperature program for each day of the week?

- Move the slider to **PROG**. The first temperature change time and setpoint for Monday will flash to indicate that they can be changed (the two small arrows are displayed only when the programmed temperature level is shown).



- Press **☉ + or -** to adjust the first temperature change time. Holding the button down will change the time quickly. The change time can be set in 10 minute steps from 03:00 in the morning. The change time can be adjusted up to 02:50 on the next morning, so you can maintain the evening temperature after midnight. (Note: If you attempt to move a change time past the next change time, both times will be moved).
- Press the **TEMP ▲** or **▼** to adjust the first temperature level. Holding the button down will change the temperature quickly. The temperature can be set in 0.5°C steps from 5°C to 30°C.
- Press **PROG 2** to display the second temperature change time and temperature level for Monday. Use **☉ + or -** and **TEMP ▲** or **▼** to change the time and temperature.
- The remaining temperature changes for Monday can be displayed by pressing **PROG** buttons **3, 4, 5** and **6** and adjusted by using **☉ + or -** and **TEMP ▲** or **▼**. (If you don't want to use all the temperature change times 2, 3, 4, 5 or 6, refer to the section "What if I don't want to use all 6 temperature change times?").

You now have a choice to set the program for the next day:-

- Press **COPY DAY** to copy Monday's program into Tuesday. To set several days of the week to the same program, press **COPY DAY** repeatedly.
- Press **DAY 1..7** to move the day marker to Tuesday (Day 2). The program for Tuesday can then be set as described in steps 2 to 5. Programs for Wednesday (Day 3) to Sunday (Day 7) can be set in the same way, using **DAY 1..7**.
- Move the slider to **AUTO** when you have completed steps 6a or 6b. The CM67NG will now control the room temperature at the times and temperatures you have set.

## What if I don't want to use all 6 temperature change times?

The built-in program uses 6 temperature change times as indicated by the numbers **1, 2, 3, 4, 5** and **6** on the display. With the slider in the **PROG** position, unwanted change times can be deleted by holding the appropriate **PROG** buttons (**2, 3, 4, 5** or **6**) down for a few seconds. The change time will be removed and the display will show dashes instead of a time / temperature display.

Deleted temperature change times can be brought back by again pressing the appropriate program button (**2, 3, 4, 5** or **6**) for a few seconds, with the slider in the **PROG** position.

## Can I change the programmed temperature for a short time?

When the slider is in **AUTO**, the temperature can be adjusted temporarily by pressing **TEMP ▲** or **▼**. The temperature will return to the program at the next temperature change time.

## How do I check the programmed temperature?

In normal operation the temperature displayed is the actual room temperature. To check the programmed temperature press **☉** and the display will show the programmed temperature with the two small arrows.

## How do I set one temperature for the whole day?

To operate as a simple thermostat with one temperature throughout the day, move the slider to **MAN**. Adjust the manual temperature by pressing **TEMP ▲** or **▼**. The manual temperature can be set anywhere from 5°C to 30°C in 0.5°C steps.

## I am having some friends round for tea/coffee. How can I extend my heating program for a few hours?

When the slider is in **AUTO**, the temperature can be adjusted temporarily by pressing the **☕ (PARTY)** button. Set the party time (1 - 23 hours) by pressing **☉ + or -**. Set the party temperature (5°C - 30°C) by pressing **TEMP ▲** or **▼**. The CM67NG will control to the new temperature for the set number of hours and then go back to the normal temperature program.

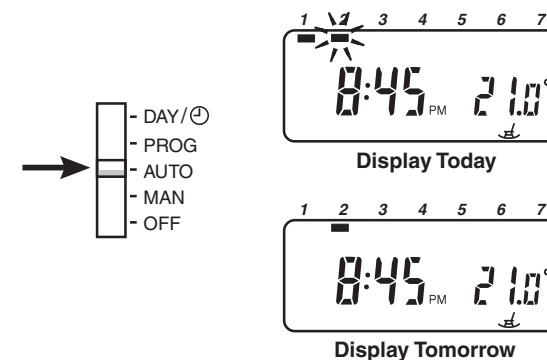
To cancel the **PARTY** setting, press **☕** a second time. The **☕** button can also be used when you go out and want to reduce the temperature for a few hours to save energy.

## I have a day off work tomorrow and I am staying at home, do I have to re-program the CM67NG?

No, with one button press, the CM67NG will remember that tomorrow is a day off. Tomorrow, the CM67NG will control the temperature using Sunday's program.

When the slider is in **AUTO**, press **☾ (DAY OFF)**. A **☾** symbol will appear and the day marker for tomorrow will flash. This indicates that the Sunday temperature program will be followed tomorrow. Tomorrow the **☾** symbol will still appear but without the flashing day marker. The CM67NG will control tomorrow's temperatures using Sunday's program.

To cancel tomorrow's **DAY OFF**, press **☾** twice. If you have 2 or more days off, press **☾** each night before going to bed.



If you have a **DAY OFF** today and want to control the temperature using Sunday's program press **☾** twice.

To cancel any **DAY OFF** setting, press **☾** repeatedly until the **☾** symbol disappears.

## I am going on holiday for a few days. How do I save energy but ensure that the house is warm when I return?

- Move the slider to the operating position you require on returning from holiday (**AUTO** or **MAN**)
- Press **☼ (HOLIDAY)** to display the holiday days counter and temperature.
- Press **☉ + or -** to set the holiday time (1 - 99 days). An extra flashing day marker shows you the holiday return day.
- Press **TEMP ▲** or **▼** to set the holiday temperature (5°C - 30°C).

The unit will control to the new temperature for the set number of days holiday. At midnight the holiday counter will be reduced by one until the selected number of days have passed. The unit will then return to normal control as set by the **MAN** or **AUTO** position.

To cancel the **HOLIDAY** setting, press **☼** a second time.

## How can I switch the Heating on and off manually?

To switch the boiler ON or OFF:

- Move the slider to the **MAN** position.
- Press **TEMP ▲** or **▼** until the boiler switches ON or OFF.

## How can I switch the CM67NG off?

Move the slider to the **OFF** position. The unit will now control at 5°C.

## How do I know when the batteries need to be changed and how do I do this?

Your CM67NG has built-in electronics that constantly monitor the battery power level. With no accessory fitted the batteries should last about 2 years. When the batteries need replacing, a flashing **☼ +** symbol will be displayed.

To change the batteries:

- Lift up the front flap to reveal the battery compartment. Open the battery compartment by inserting a coin underneath the bottom right edge of the flap and lift out.
- Replace the used batteries with 2 new AA LR6 Alkaline Batteries (Duracell are recommended) and push the battery compartment firmly back into the front of the unit.

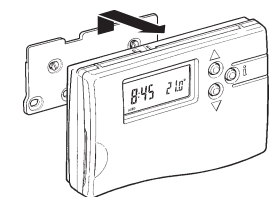
**RESPECT YOUR ENVIRONMENT!**  
Take care to dispose of used batteries carefully.

The CM67NG has a permanent memory to keep your program settings while you change the batteries, you should never need to reprogram. However, if you take more than one minute to change them, you may need to correct the time by moving the slider to **DAY / ☉** and using the **☉ + or -**.

## Can I use the CM67NG to control my air-conditioning system?

Yes. Please refer to your installer for more information.

## How do I remove the CM67NG from the wall bracket?



After programming is finished always replace the CM67NG back on the wall bracket.

## Free Manuals Download Website

<http://myh66.com>

<http://usermanuals.us>

<http://www.somanuals.com>

<http://www.4manuals.cc>

<http://www.manual-lib.com>

<http://www.404manual.com>

<http://www.luxmanual.com>

<http://aubethermostatmanual.com>

Golf course search by state

<http://golfingnear.com>

Email search by domain

<http://emailbydomain.com>

Auto manuals search

<http://auto.somanuals.com>

TV manuals search

<http://tv.somanuals.com>