

Honeywell

CP-50 Water Purifier

Product Installation & Operation Manual

Honeywell Environmental & Combustion Controls
(Tianjin) Co., Ltd.

Catalog

Important Notes	P2
Safety Precautions	P3
Product Functions	P4
Product Features	P5
Installation Instructions	P6-P7
Operation Instructions	P8
Care & Maintenance	P9
Warranty Provisions	P10
Packing List	P11

Important Notes

Users must install the water purifier with the help of professionals by strictly following the installation specification set out in the "Product Installation & Operation Manual" (hereinafter referred to as manual), and use the water purifier according to the instructions in the manual. Otherwise the company does not assume any economic or legal responsibility for the water purifier damage or leakage and consequential property damage due to improper installation and usage of water purifier.

1. Check the water purifier and pipe fittings regularly to see whether there is any leakage, and avoid property damage caused by leakage.
2. The water purifier is only intended for household use, and may not be suitable for other purposes.
3. For the water purifier maintenance and filter cartridge replacement, use the replacement parts authorized by Honeywell Environmental & Combustion Controls (Tianjin) Co., Ltd.. Quality problems, degradation of operational performance or property damage caused by using unauthorized parts or accessories are not covered in the guarantee.
4. Maintenance of the water purifier and filter cartridge replacement are paid services.

Safety Precautions

At the inlet of the water purifier, the water quality must be the municipal tap water quality which meets local standard.

Do not install the water purifier in the water supply pipe, whose pressure exceeds 0.6MPa. If the water inlet pressure exceeds 0.6 MPa, the pressure reduce valve (purchased separately) must be installed.

The water inlet temperature range of the water purifier is 5 ~ 38°C; water temperature exceeding 38°C may damage seals and cause leakage; water temperature below 5°C may cause water to freeze and lead to the pipe rupture and leakage.

Install the filter cartridge in a correct order, otherwise the water purifier cannot perform its intended function.

Do not install the water purifier reversely, and connect the water inlet pipe to the outlet.

Do not install the water purifier in direct sunlight or at a places where it is exposed to hazardous chemicals or may be damaged by falling or collision.

Do not install the water purifier near any source of heat.

Do not install the water purifier upside down.

Product Functions

● Exterior Features

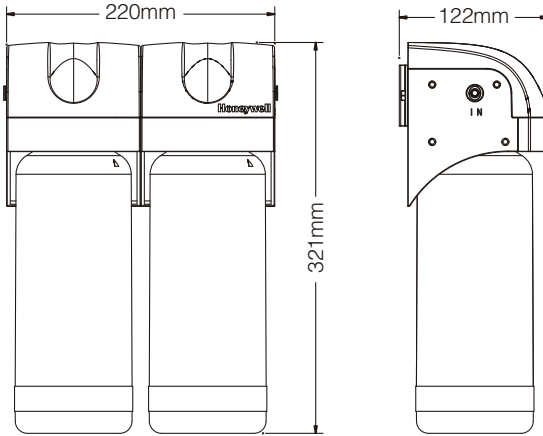


Figure 1

● Technical Parameters

Model	CP-50
Water inlet pressure	0.2MPa~0.6MPa
Water inlet temperature	5~38°C
Purified water flow rate	1.5 L / Min
Rated maximum capacity	*800L
Water inlet requirement	Municipal tap water, conforming to local standard

* The rated maximum capacity is the effective treatment capacity after adding the standard solution in the whole process according to the inspection rules required by Ministry of Health. The actual water treatment capacity may vary depending on local water quality and operating environment.

Table 1

Product Features

● Brief Introduction

The water purifier is designed to work under the table near the sink in the kitchen. The supply pipe connects to your existing water connection pipe with a tee joint. This water purifier is designed to purify the drinking water.

The water purifier filter cartridges need to be changed regularly. Replacement cycle of the Lead removal ACF and MS composite molecular sieve (sterilization) will be indicated at the faucet (separate package) base. The green light indicates it is within the safe range, the yellow light indicates it needs to be replaced (close to safe range), and the red light indicates it exceeds the safety range and must be replaced.

● Main Components

The water purifier system consists of five main components:

1. Water purifier filter adapter filter adapter
2. Lead removal ACF
3. MS composite molecular sieve filter cartridge (sterilization)
4. 3-way ball valve kit
5. 1 / 4 "PE pipe

● Filter Performance

Lead removal ACF	Sediment, rust, humus and other impurities
	Color, odor, residual chlorine
	Heavy metals such as lead
MS composite molecular sieve (sterilization)	Color, odor, residual chlorine
	Humus and other impurities
	Disinfection by-products (chloroform, carbon tetrachloride)

Table 2

Caution: Do not let the supply and drainage lines or purifier be frozen. If the water temperature or the ambient temperature drops below 5°C, turn off the supplying water pipe and discharge the water inside the purifier. The freeze of water supply pipe or purifier may cause failure or damage of enclosure and water pipe and possible injury.

Installation Instructions

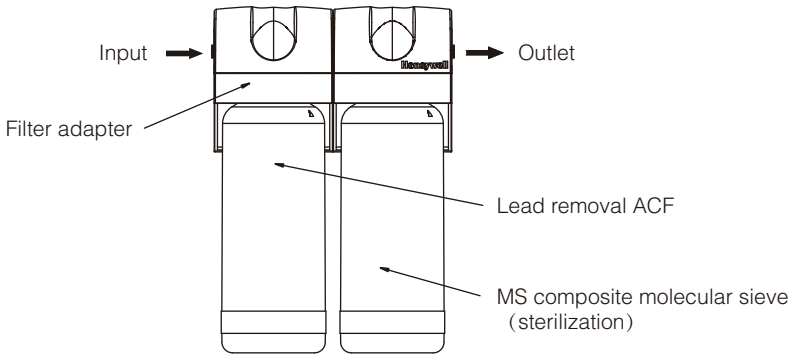


Figure 2

● Preparations before Installation

1. Confirm the location before installing the water purifier. (It depends on the actual installation)
2. Make sure all accessories required for installation are complete. (See packing list)
3. Turn off the water inlet valve before installation.

● Installation Steps

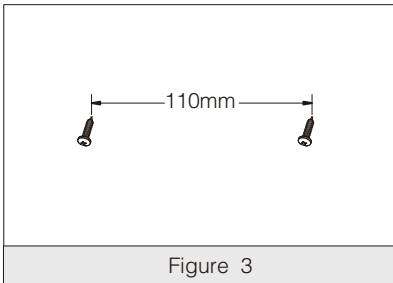


Figure 3

Step 1:

Fix the filter adapter with screws, as shown in Figure 3.

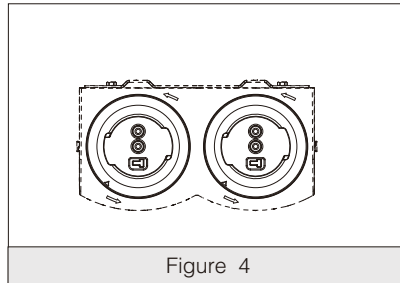


Figure 4

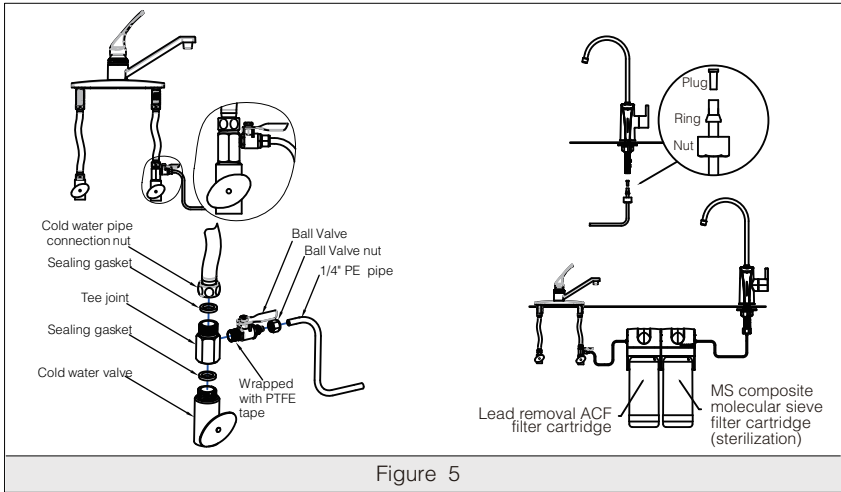
Step 2:

Assemble lead removal ACF cartridge to the first stage of the filter adapter, and MS composite molecular sieve filter cartridge (sterilization) to the second stage of the filter adapter.

Align the two pipes of the cartridge to the connection holes in the wall, and rotate counter-clockwise to the end.

Installation Instructions

● Installation Steps



Step 3:

Cut the 1/4"PE pipe into 2 sections. One section is used to connect tee joint ball valve and filter adapter, and the other section is used to connect faucet and filter adapter, as shown in Figure 5.

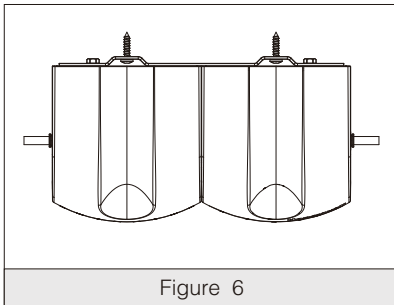


Figure 6

Step 4: Hang the whole set of the water purifier on the filter adapter screws.

● Wash and Start Water Purifier

1. Turn on the water inlet valve and small ball valve.
2. Open the faucet to let the water flow into the water purifier. Due to the role of carbon particles and bubbles, the water may seem a little muddy at the start, which is normal.
3. Continuously flush new water purifier for about 10 minutes, until the water becomes clear and no bubbles, and it can provide the drinking water.

Operation Instructions

1. Check water purifier and components regularly to avoid leakage, which may cause damage to property.
2. When you go out or do not use the water purifier for a long time, please shut off the water inlet of the purifier (turn off the water inlet ball valve).
If the purifier has not been used for 24 hours, please flush it for 5-10 seconds. If the purifier has not been used for more than 5 days (more than 3 days in summer), please flush it for 10 minutes before use. Do not keep the filter unused for long after the water flows through, especially in summer, generally no more than 14 days.
3. In case of any following situations, shut off the input water of the purifier (turn off the water inlet ball valve) immediately, and contact the service provider as soon as possible.

If the pipe or related parts of the water purifier are leaking.
If the related components of the water purifier malfunction.
If any other anomalies or failures occur.

Care & Maintenance

● The set of capacity and replacement time recommended for filter cartridges at various stages

Filter cartridge name	Recommended handling capacity	Recommended replacement time
Lead removal ACF	1.5-3 tons	6-12 months
MS composite molecular sieve (sterilization)	1.5-3 tons	6-12 months

The set of capacity and replacement time may be adjusted based on the water quality and usage.

Every filter cartridge of the product uses flow and time dual control. Whichever reaches the set value, the faucet will give indication. See the faucet manual for details.

Table 3

1. The recommended replacement cycles for various filter cartridges of the water purifier are estimated by referencing the average indicator of water supply at various regions. When the water quality at the user's site and the purifier usage are quite different from the average indicator, filter cartridge usage and estimated cycle may be significantly different, such as early clogging or failure of filter cartridge. The actual usage will be used as the basis for replacing the filter cartridge, and contact the service provider for the setting.

2. The estimation of filter cartridge usage cycle is based on the average household water consumption. The usage cycle is only suitable for household use, and may not be suitable in public places with large water consumption.

● Replacing the filter components

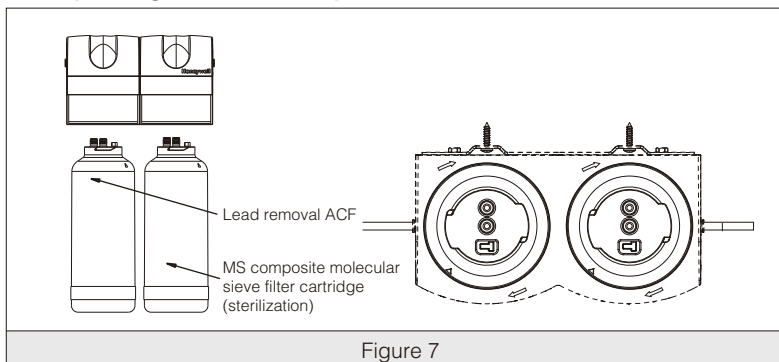


Figure 7

1. Align the filter cartridge with the filter adapter, and rotate clockwise until it stops. The filter cartridge automatically comes off.
2. Select the corresponding replacement filter cartridge, align the 2 connection pipes with the connections holes in the filter adapter, and rotate counter-clockwise until it stops.
3. When replacing the water purifier water cartridge, there is no need to turn off the water inlet valve, because the filter adapter will automatically turn off the water outlet.
4. When removing the filter cartridge, there may be a little water coming out of the filter cartridge. Wipe the water off.

Warranty Provisions

1. Warranty period

We provide one year warranty for the whole product, but consumables are not covered (consumables include various filter cartridges).

Note: The water purifier is only intended for household use, and may not be suitable for commercial sites.

2. Warranty conditions

Users should follow the following rules, or else the warranty rights will be voided.

- Users should purchase the product from legal sellers through legal ways.
- Users should keep the invoice and the manual in a safe place.
- The product should be installed by service teams authorized by Honeywell or qualified installation teams authorized by the State authority.
- The supplied manual must be strictly followed when using the product.

3. Exceptional conditions

Product malfunctions or damages in the following situations are not covered in the warranty:

- 1) Purchase the product through illegal means or illegal ways.
- 2) Products without invoice or proof materials.
- 3) Product malfunctions or damages caused by installation of the unqualified team or without guidance of the manufacturer.
- 4) Use non-authorized parts or accessories.
- 5) Malfunctions or damages caused by improper use and breaking the rules of the product manual.
- 6) Malfunctions or damages caused by forced use under abnormal conditions.
- 7) Damages caused by force majeure.
- 8) Products repaired by non-authorized staff.

4. Warranty service

Our company will provide comprehensive warranty service for the malfunctioned and damaged products within the warranty period if they comply with the warranty conditions and do not comply with any exceptional conditions. The warranty services include:

- Repair the malfunctioned products for free;
- Replace the malfunctioned parts for free;
- Other services specified in the State regulations, including local laws.

5. Warranty service procedure

- 1) When the product malfunctions, turn off the water immediately. After verifying that it meets all the requirements, contact the specified service provider immediately.
- 2) When the maintenance staff provides on-site services, the user should provide valid invoice and describe the service conditions and malfunctions. After verifying the product, the maintenance staff will carry out inspection and repair.

Packing List

No	Item	Quantity	
1	Filter adapter	1 set	
2	Lead removal ACF filter cartridge	1 set	
3	MS composite molecular sieve filter cartridge (sterilization)	1 set	
4	Accessories	1/4"PE white pipe	2.0 m
5		1/4" tee joint	1 pcs
6		1/2" ball valve	1 pcs
7		Screw	2 pcs
8	Manual	1 pcs	

Table 4

Honeywell Environmental & Combustion Controls
(Tianjin) Co., Ltd.
No. 158, NanHai Road
Tianjin Economic-Technological Development Area
Tianjin, 300457, P.R.C.
Phone: +86-22-66287000

Subject to change without notice

Honeywell

50085494-001 REV.A

Free Manuals Download Website

<http://myh66.com>

<http://usermanuals.us>

<http://www.somanuals.com>

<http://www.4manuals.cc>

<http://www.manual-lib.com>

<http://www.404manual.com>

<http://www.luxmanual.com>

<http://aubethermostatmanual.com>

Golf course search by state

<http://golfingnear.com>

Email search by domain

<http://emailbydomain.com>

Auto manuals search

<http://auto.somanuals.com>

TV manuals search

<http://tv.somanuals.com>