

HUAWEI WATCH 2
Quick • Start • Guide

1. Appearance



Power button



Press and hold the power button until your watch switches on. Touch the power icon on the watch face, and choose **Settings** > **System** > **Power off**.



Multi-function button



Microphone



Charging port



Heart rate sensor



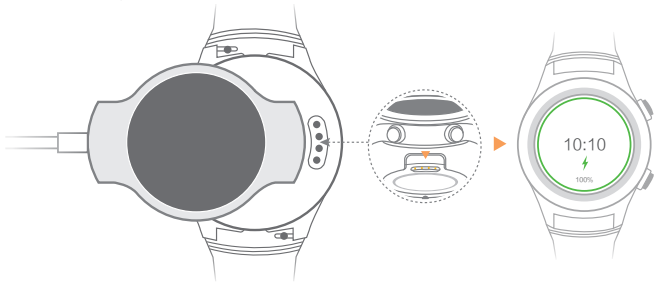
Speaker



Every material that used in this device has gone through extensive evaluation. If you feel uncomfortable while wearing it, stop using the watch and consult a doctor.

2. Charging

Align and attach the charging port to the magnets of the charging cradle. You can view the battery power level on the watch face.



i Make sure the charging port is dry and clean before charging to prevent the magnets from being damaged by any moisture.

3. Common operating gestures

You can press the two side buttons and touch or swipe your watch screen.

Power button	Press: Open the applications list and go back to the home screen. Press and hold: Open the voice service.
Multi-function button	Press: Open the Workout app when the screen is on. Double-press: Open the payment application.
Touch	Choose and confirm.
Swipe up	View card information.
Swipe down	View shortcut menus. Hide a card.
Swipe from edge to edge	Enter the watch face list.
Swipe right	Return to the previous screen.


4. Pairing with your phone via *Bluetooth*[®]

1. Power on your watch and select the language.
2. On your phone or tablet, download the **Android Wear**[™] app in Google Play[™] or App Store.



Android Wear

3. Follow the app's on screen instructions to pair your watch with your phone or tablet. When they are paired, swipe on your watch face to learn common gestures.

 One watch can only pair with one phone. Unpair the current phone if you want to pair your watch with another phone. Your watch will restore to factory settings and all data will be cleared after unpairing.

Requires a phone running Android[™] 4.3+ or iOS[™] 8.2+. Supported features may vary between Android and iOS.

Visit g.co/WearCheck on your phone to see if it's compatible.

5. Relevant applications

Android users can download **Huawei Wear** and **Huawei Health** in the app store to better use the watch.



Huawei Wear


Huawei Wear helps you manage your watch. Different versions support different functions.

	Bluetooth edition	SIM edition	eSIM edition
Manage your watch	√	√	√
Enable the eSIM	/	/	√



Huawei Health

Huawei Health measures your movements and your heart rate in detail and designs a personalized workout plan.

 You can download **Huawei Wear** app on your iOS device, but currently you cannot use this app to manage your watch. **Huawei Health** is not supported on iOS devices.

6. Functions

Notifications

Your watch will vibrate when it gives you a reminder. Lift your wrist to read it. For some notifications, swipe the notification to reply to the message or call back.

Health and fitness



Your watch identifies and measures your daily movements intelligently and precisely. You can also enable the **Workout**



app to provide you with a fitness coach.



Wear your watch properly so it sits snugly on your wrist. Your watch measures your heart rate throughout the day, and gives an alarm when your heart rate is abnormal during workout.



The data from the watch cannot be used as a basis for medical purposes.

Voice service

Lift your wrist and say "Ok Google" to launch voice commands. Swipe up on the screen for more voice commands.

Communication

It is easy to see who's calling and to answer from your watch.



Bluetooth versions can only make phone calls after pairing with your phone. SIM and eSIM versions can make phone calls even when your phone and your watch are not paired.


Quick payment

Switch on your watch and make quick payments through NFC by attaching your watch to the payment terminal.

7. More information

Adjusting, fastening, and removing your strap


Adjust your strap based on your wrist size. To fasten or remove your strap, see the following instructions.


 Gently pull the strap to make sure you have properly fastened it.

Straps

Straps are available in a range of colors, styles, and materials. To purchase one, please contact retailers.

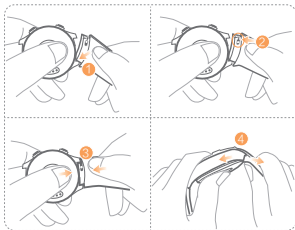
Maintenance

 You can wear your watch when you're washing your hands or in the rain, but wipe it dry if it comes into contact with water. Keep the leather parts dry.

 Do not wear it when washing cars, swimming, diving, scuba diving, or showering.



Remove the strap



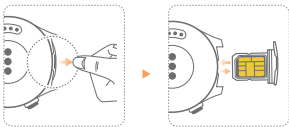
Fasten the strap

Inserting a nano-SIM card

1. Rotate the mounting ears and remove the strap.
2. Use your fingernails or a flat tool, such as a plastic card, to pop open the nano-SIM card tray.
3. Place a nano-SIM card into the card tray in the proper direction.
4. Insert the tray back in the same orientation that you removed it, and slide the strap back in.

Note:

- Insert the card tray completely and keep the rubber ring dry and clean.
- Your watch supports standard nano-SIM cards only. Please contact your carrier for a standard nano-SIM card.
- Use a standard nano-SIM card to prevent the card tray of your watch being damaged.
- Insert the nano-SIM card in the correct direction and keep the card tray level.



Help

Access **Huawei Wear > Help** or scan the QR code to learn more about HUAWEI WATCH 2.



Copyright © Huawei Technologies Co., Ltd. 2017. All rights reserved.

Android and Android Wear are trademarks of Google Inc.

This document is for reference only and does not constitute a warranty of any kind, express or implied.

For more information, please visit <http://consumer.huawei.com>



99011MTK_01

Free Manuals Download Website

<http://myh66.com>

<http://usermanuals.us>

<http://www.somanuals.com>

<http://www.4manuals.cc>

<http://www.manual-lib.com>

<http://www.404manual.com>

<http://www.luxmanual.com>

<http://aubethermostatmanual.com>

Golf course search by state

<http://golfingnear.com>

Email search by domain

<http://emailbydomain.com>

Auto manuals search

<http://auto.somanuals.com>

TV manuals search

<http://tv.somanuals.com>