

# KENWOOD

**KDC-258U**  
**KDC-158U**  
**KDC-118U**

**KDC-MP258U**  
**KDC-MP158U**

CD-RECEIVER

## INSTRUCTION MANUAL

AMPLI-TUNER LECTEUR DE CD

## MODE D'EMPLOI

REPRODUCTOR DE DISCOS COMPACTOS RECEPTOR DE FM/AM

## MANUAL DE INSTRUCCIONES

JVCKENWOOD Corporation

**Take the time to read through this instruction manual. Familiarity with installation and operation procedures will help you obtain the best performance from your new CD-receiver.**

### For your records

Record the serial number, found on the back of the unit, in the spaces designated on the warranty card, and in the space provided below. Refer to the model and serial numbers whenever you call upon your Kenwood dealer for information or service on the product.

Model KDC-258U/ KDC-158U/ KDC-118U/ KDC-MP258U/  
KDC-MP158U Serial number \_\_\_\_\_

**US Residents Only**



**Register Online**

Register your Kenwood product at [www.Kenwoodusa.com](http://www.Kenwoodusa.com)

# CONTENTS

BEFORE USE	2
BASICS	3
GETTING STARTED	4
RADIO	5
CD / USB / iPod	6
AUX	8
Pandora® (for <b>KDC-258U</b> / <b>KDC-158U</b> )	8
iHeartRadio® (for <b>KDC-258U</b> / <b>KDC-158U</b> )	9
AUDIO SETTINGS	10
DISPLAY SETTINGS	11
MORE INFORMATION	11
TROUBLESHOOTING	12
INSTALLATION / CONNECTION	14
SPECIFICATIONS	i and ii (at the end of the book)

## How to read this manual

- Operations are explained mainly using buttons on the faceplate.
- [XX] indicates the selected items.
- (➔ XX) indicates references are available on the stated page.

# BEFORE USE

## ⚠ Warning

Do not operate any function that takes your attention away from safe driving.

## ⚠ Caution

### Volume setting:

- Adjust the volume so that you can hear sounds outside the car to prevent accidents.
- Lower the volume before playing digital sources to avoid damaging the speakers by the sudden increase of the output level.

### General:

- Avoid using the USB device or iPod/iPhone if it might hinder safe driving.
- Make sure all important data has been backed up. We shall bear no responsibility for any loss of recorded data.
- Never put or leave any metallic objects (such as coins or metal tools) inside the unit, to prevent a short circuit.
- If a disc error occurs due to condensation on the laser lens, eject the disc and wait for the moisture to evaporate.

### Remote control (RC-406):

- Do not leave the remote control in hot places such as on the dashboard.
- The Lithium battery is in danger of explosion if replaced incorrectly. Replace it only with the same or equivalent type.
- The battery pack or batteries shall not be exposed to excessive heat such as sunshine, fire or the like.
- Keep the battery out of reach of children and in its original packaging when not in used. Dispose of used batteries promptly. If swallowed, contact a physician immediately.

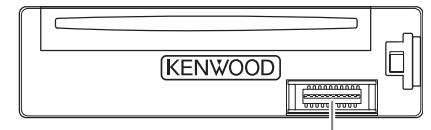
## Maintenance

**Cleaning the unit:** Wipe off dirt on the faceplate with a dry silicone or soft cloth.

**Cleaning the connector:** Detach the faceplate and clean the connector gently with a cotton swab, being careful not to damage the connector.

### Handling discs:

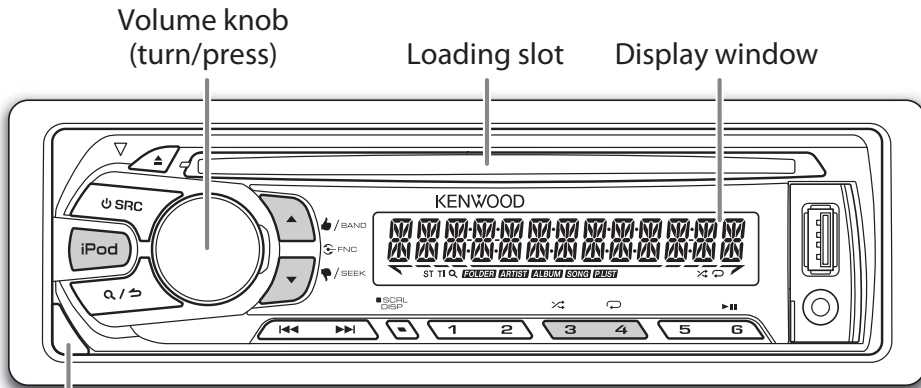
- Do not touch the recording surface of the disc.
- Do not stick tape etc. on the disc, or use a disc with tape stuck on it.
- Do not use any accessories for the disc.
- Clean from the center of the disc and move outward.
- Clean the disc with a dry silicone or soft cloth. Do not use any solvents.
- When removing discs from this unit, pull them out horizontally.
- Remove burrs from the center hole and disc edge before inserting a disc.



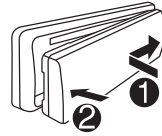
Connector (on the reverse side of the faceplate)

# BASICS

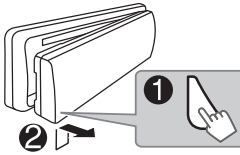
## Faceplate



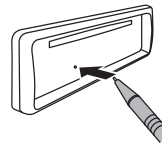
### Attach



### Detach



### How to reset

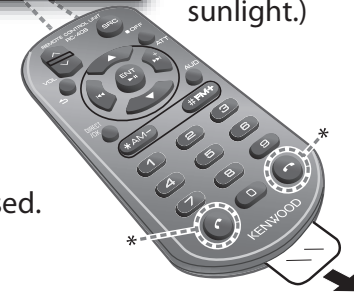


Your preset adjustments will also be erased.

## Remote control (RC-406)



\* Not used.



Pull out the insulation sheet when using for the first time.

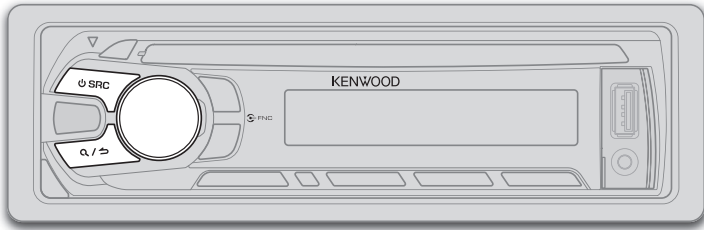
### How to replace the battery



To	Do this (on the faceplate)	Do this (on the remote control)
Turn on the power	Press <b>SRC</b> . • Press and hold to turn off the power.	Press and hold <b>SRC</b> to turn off the power. ( Pressing <b>SRC</b> does not turn on the power. )
Adjust the volume	Turn the volume knob.	Press <b>VOL</b> $\wedge$ or <b>VOL</b> $\vee$ .  Press <b>ATT</b> during playback to attenuate the sound. • Press again to cancel.
Select a source	Press <b>SRC</b> repeatedly.	Press <b>SRC</b> repeatedly.
Change the display information*	Press <b>DISP SCRL</b> repeatedly. • Press and hold to scroll the current display information.	( not available )

\* For **KDC-MP258U**/ **KDC-MP158U**: You can also select to turn off the display information by pressing **DISP SCRL** repeatedly.

# GETTING STARTED



## 1 Cancel the demonstration

When you turn on the power (or after you reset the unit), the display shows: "CANCEL DEMO" → "PRESS" → "VOLUME KNOB"

- 1 Press the volume knob. [YES] is selected for the initial setup.
- 2 Press the volume knob again. "DEMO OFF" appears.

## 2 Set the clock

- 1 Press the volume knob to enter [FUNCTION].
- 2 Turn the volume knob to select [CLOCK], then press the knob.
- 3 Turn the volume knob to select [CLOCK ADJUST], then press the knob.
- 4 Turn the volume knob to make the settings, then press the knob. Day → Hour → Minute
- 5 Turn the volume knob to select [CLOCK FORMAT], then press the knob.
- 6 Turn the volume knob to select [12H] or [24H], then press the knob.
- 7 Press and hold Q/BACK to exit.

(or)

- 1 Press and hold **DISP SCRL** to enter clock adjustment mode directly while in clock display screen.
- 2 Turn the volume knob to make the settings, then press the knob. Day → Hour → Minute

To return to the previous setting item or hierarchy, press Q/BACK.

## 3 Set the initial settings

- 1 Press **SRC** to enter **STANDBY**.
- 2 Press the volume knob to enter [FUNCTION].
- 3 Turn the volume knob to make a selection (see the following table), then press the knob.
- 4 Press and hold Q/BACK to exit.

To return to the previous setting item or hierarchy, press Q/BACK.

Default: **XX**

### AUDIO CONTROL

<b>SWITCH PREOUT</b>	<b>REAR/ SUB-W:</b> Selects whether rear speakers or a subwoofer are connected to the line out terminals on the rear (through an external amplifier).
<b>SP SELECT</b>	<b>OFF/ 5/4/ 6 × 9/6/ OEM:</b> Selects according to the speaker size (5 inches or 4 inches, 6×9 inches or 6 inches) or OEM speakers for optimum performance.

### DISPLAY

<b>EASY MENU</b>	(For <b>KDC-258U</b> / <b>KDC-MP258U</b> ) <b>ON:</b> Both display and button illumination change to white color when entering [FUNCTION]. ; <b>OFF:</b> Both display and button illumination remain as [COLOR SELECT] color. (→ 11)
------------------	--

### TUNER SETTING

<b>PRESET TYPE</b>	<b>NORMAL:</b> Memorizes one station for each preset button in each band (FM1/ FM2/ FM3/ AM). ; <b>MIX:</b> Memorizes one station for each preset button, regardless of the selected band.
--------------------	---

### SYSTEM

<b>KEY BEEP</b>	<b>ON:</b> Activates the keypress tone. ; <b>OFF:</b> Deactivates.
-----------------	--

### SOURCE SELECT

<b>PANDORA SRC</b>	<b>ON:</b> Enables PANDORA in source selection. ; <b>OFF:</b> Disables. (→ 8)
<b>IHEART SRC</b>	<b>ON:</b> Enables IHEARTRADIO in source selection. ; <b>OFF:</b> Disables. (→ 9)
<b>BUILT-IN AUX</b>	<b>ON:</b> Enables AUX in source selection. ; <b>OFF:</b> Disables. (→ 8)

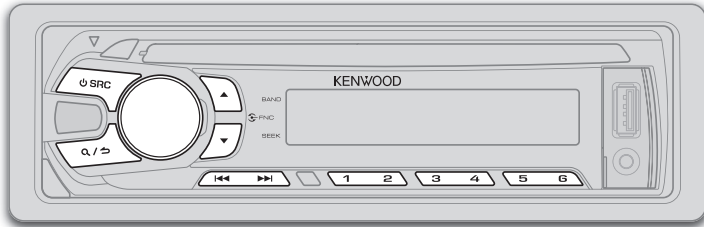
<b>CD READ</b>	<b>1:</b> Automatically distinguishes between audio file disc and music CD. ; <b>2:</b> Forces to play as an music CD. No sound can be heard if an audio file disc is played.
----------------	---

### F/W UPDATE

#### UPDATE SYSTEM

<b>F/W UP xx.xx</b>	<b>YES:</b> Starts upgrading the firmware. ; <b>NO:</b> Cancels (upgrading is not activated). For details on how to update the firmware, see: <a href="http://www.kenwood.com/cs/ce/">www.kenwood.com/cs/ce/</a>
---------------------	---

# RADIO



## Search for a station

- 1 Press **SRC** to select TUNER.
  - 2 Press **BAND** repeatedly (or press **\*AM-** / **#FM+** on RC-406) to select FM1/ FM2/ FM3/ AM.
  - 3 Press **◀◀/▶▶** (or press **◀◀/▶▶(+)** on RC-406) to search for a station.
- To change the searching method for **◀◀/▶▶**: Press **▼SEEK** repeatedly.  
**AUTO1**: Automatically search for a station.  
**AUTO2**: Automatically search for a preset station.  
**MANUAL**: Manually search for a station.
  - To store a station: Press and hold one of the number buttons (**1** to **6**).
  - To select a stored station: Press one of the number buttons (**1** to **6**) (or press one of the number buttons (**1** to **6**) on RC-406).

## Direct Access Tuning (using RC-406)

- 1 Press **DIRECT** to enter Direct Access Tuning.
  - 2 Press the number buttons to enter a frequency.
  - 3 Press **ENT▶▶** to search for a station.
- To cancel, press **↶** or **DIRECT**.
  - If no operation is done for 10 seconds after step **2**, Direct Access Tuning is automatically canceled.

## Other settings

- 1 Press the volume knob to enter [FUNCTION].
- 2 Turn the volume knob to make a selection (see the following table), then press the knob.
- 3 Press and hold **Q/PS** to exit.

To return to the previous setting item or hierarchy, press **Q/PS**.

Default: **XX**

### TUNER SETTING

**AUTO MEMORY** **YES**: Automatically starts memorizing 6 stations with good reception. ; **NO**: Cancels. (Selectable only if [**NORMAL**] is selected for [**PRESET TYPE**].) (➔ 4)

**MONO SET** **ON**: Improves the FM reception, but the stereo effect may be lost. ; **OFF**: Cancels.

For **KDC-MP258U** / **KDC-MP158U**:

**TI** **ON**: Allows the unit to temporarily switch to Traffic Information. ; **OFF**: Cancels.

**PTY SEARCH** Selects the available Program Type (see below), then, press **◀◀/▶▶** to start.

### CLOCK

**TIME SYNC** **ON**: Synchronizes the unit's time to the Radio Broadcast Data System station time. ; **OFF**: Cancels.

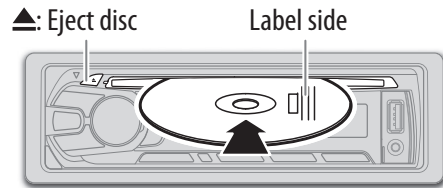
- [**MONO SET**] / [**TI**] / [**PTY SEARCH**] is selectable only when the band is FM1/ FM2/ FM3.
- Available Program Type:  
**SPEECH**: NEWS, INFORM (information), SPORTS, TALK, LANGUAGE, REL TALK (religious talk), PERSONLTY (personality), PUBLIC, COLLEGE, HABL ESP (spanish talk), WEATHER  
**MUSIC**: ROCK, CLS ROCK (classic rock), ADLT HIT (adult hits), SOFT RCK (softrock), TOP 40, COUNTRY, OLDIES, SOFT, NOSTALGA (nostalgia), JAZZ, CLASSICL (classical), R & B (rhythm and blues), SOFT R&B (soft rhythm and blues), REL MUSC (religious music), MUSC ESP (spanish music), HIP HOP  
 The unit will search for the Program Type categorized under [**SPEECH**] or [**MUSIC**] if selected.
- If the volume is adjusted during reception of traffic information or alarm, the adjusted volume is memorized automatically. It will be applied the next time traffic information or alarm function is turned on.

# CD / USB / iPod

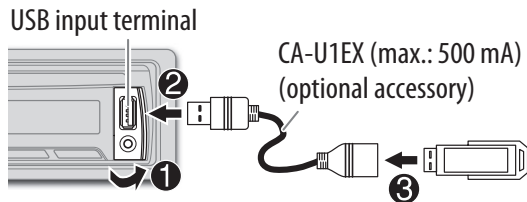
## Start playback

The source changes automatically and playback starts.

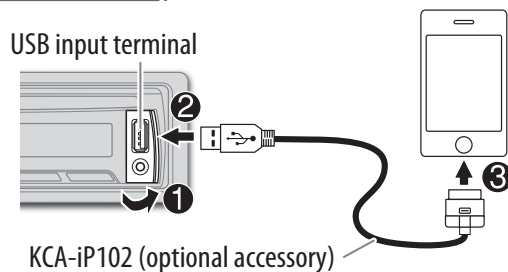
### CD



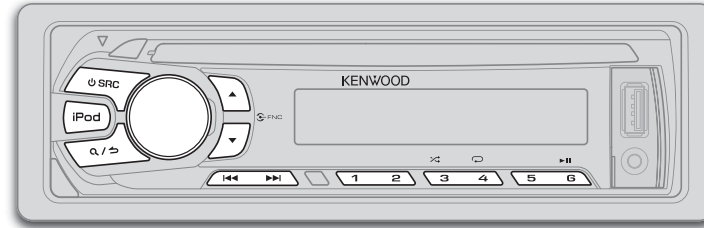
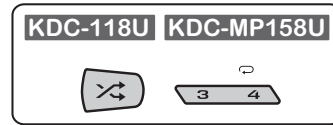
### USB



### iPod/iPhone (except for **KDC-118U**/ **KDC-MP158U**)



**Press and hold iPod** to select the control mode while in iPod source.  
**MODE ON:** From the iPod\*1.  
**MODE OFF:** From the unit.



To	Do this
Pause or resume playback	Press <b>6</b> ►    (or press <b>ENT</b> ►    on RC-406).
Select a track/file	Press  ◀◀ / ▶▶  (or press  ◀◀ / ▶▶  (+) on RC-406).
Select a folder *2	Press ▲ / ▼ (or press *AM- / #FM+ on RC-406).
Reverse/ Fast-forward	Press and hold  ◀◀ / ▶▶  (or press and hold  ◀◀ / ▶▶  (+) on RC-406).
Repeat play *3	Press <b>4</b> ◀ repeatedly. <ul style="list-style-type: none"> <li>• Audio CD: TRACK REPEAT, REPEAT OFF</li> <li>• MP3/WMA/WAV file or iPod: FILE REPEAT, FOLDER REPEAT, REPEAT OFF</li> <li>• KENWOOD Music Editor Light (KME Light)/ KENWOOD Music Control (KMC) file (→ 11): FILE REPEAT, REPEAT OFF</li> </ul>
Random play *3	Press <b>3</b> ✂ or ✂ repeatedly. <ul style="list-style-type: none"> <li>• Audio CD: DISC RANDOM, RANDOM OFF</li> <li>• MP3/WMA/WAV file or iPod or KME Light/ KMC file: FOLDER RANDOM, RANDOM OFF</li> </ul> <p>Press and hold <b>3</b> ✂ or ✂ to select "ALL RANDOM". *4</p>

\*1 You can still play/pause, file search, fast-forward or reverse files from the unit.

\*2 Only for MP3/WMA/WAV files. This does not work for iPod.

\*3 For iPod: Applicable only when [MODE OFF] is selected.

\*4 For CD: Only for MP3/WMA files.

If you connect the iPod/iPhone to the USB input terminal of the unit (while listening to TuneIn, TuneIn Radio Pro or Aupeo), the unit will output the sound from these apps.



### Select a track/file from a list

**For iPod:** Applicable only when [MODE OFF] is selected. (→ 6)

- 1 Press **Q/↵**.
  - 2 Turn the volume knob to make a selection, then press the knob.
    - MP3/WMA/WAV file: Select the desired folder, then a file.
    - iPod or KME Light/ KMC file: Select the desired file from the list (PLAYLISTS, ARTISTS, ALBUMS, SONGS, PODCASTS\*, GENRES, COMPOSERS\*).
- \* Only for iPod.
- To return to the root folder (or first file), press number button **5**.
  - To return to the previous setting item or hierarchy, press **Q/↵**.
  - To cancel, press and hold **Q/↵**.

If you have many files....

You can search through them quickly (on step **2** above) at a preset skip search ratio by pressing **◀◀/▶▶**.

- See also "Set the skip search ratio."
- Pressing and holding **◀◀/▶▶** skip songs at the maximum ratio (10%) regardless of the setting made.
- **For USB:** Only for files registered in the database created with KME Light/ KMC.
- Not applicable for audio CD.

### Direct Music Search (using RC-406)

- 1 Press **DIRECT**.
- 2 Press the number buttons to enter a track/file number.
- 3 Press **ENT▶||** to search for music.
  - To cancel, press **↵**.
  - Not available if Random Play is selected.
  - Not applicable for iPod, KME Light/ KMC file.

### Select a song by name

While listening to iPod...

- 1 Press **Q/↵**.
- 2 Turn the volume knob to select a category, then press the knob.
- 3 Turn the volume knob quickly to enter character search.
- 4 Turn the volume knob to select the character to be searched for.
- 5 Press **◀◀/▶▶** to move to the entry position.
 

You can enter up to 3 characters.
- 6 Press the volume knob to start searching.
- 7 Turn the volume knob to make a selection, then press the knob.
 

Repeat step **7** until the desired item is selected.

  - To search for a character other than A to Z and 0 to 9, enter only "∗".
  - To return to the previous hierarchy, press **Q/↵**.
  - To return to the top menu, press number button **5**.
  - To cancel, press and hold **Q/↵**.

### Set the skip search ratio

While listening to iPod or KME Light/ KMC file...

- 1 Press the volume knob to enter [FUNCTION].
- 2 Turn the volume knob to select [USB], then press the knob.
- 3 Turn the volume knob to select [SKIP SEARCH], then press the knob.
- 4 Turn the volume knob to make a selection, then press the knob.
 

0.5% (default)/ 1%/ 5%/ 10%: Skip search ratio over the total files.
- 5 Press and hold **Q/↵** to exit.

### Change the USB drive

When a smartphone (Mass Storage Class) is connected to the USB input terminal, you can select its internal memory or external memory (such as an SD card) to playback the stored songs. You can also select the desired drive to playback when a multiple drives device is connected.

Press number button **5** repeatedly to select the desired drive.

(or)

- 1 Press the volume knob to enter [FUNCTION].
- 2 Turn the volume knob to select [USB], then press the knob.
- 3 Turn the volume knob to select [MUSIC DRIVE], then press the knob.
- 4 Press the volume knob to select [DRIVE CHANGE].

The next drive is selected automatically. Repeat steps **1** to **4** to select the following drives. Selectable items: [DRIVE 1] to [DRIVE 5]

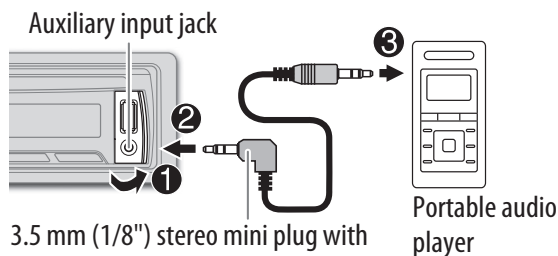
# AUX

## Preparation:

Select [ON] for [BUILT-IN AUX]. (→ 4)

### Start listening

- 1 Connect a portable audio player (commercially available).



3.5 mm (1/8") stereo mini plug with "L" shaped connector (commercially available)

- 2 Press **SRC** to select AUX.
- 3 Turn on the portable audio player and start playback.

### Set the AUX name

While listening to a portable audio player connected to the unit...

- 1 Press the volume knob to enter [FUNCTION].
- 2 Turn the volume knob to select [SYSTEM], then press the knob.
- 3 Turn the volume knob to select [AUX NAME SET], then press the knob.
- 4 Turn the volume knob to make a selection, then press the knob.  
AUX (default)/ DVD/ PORTABLE/ GAME/ VIDEO/ TV
- 5 Press and hold **Q/↵** to exit.

# Pandora® (for KDC-258U/ KDC-158U)

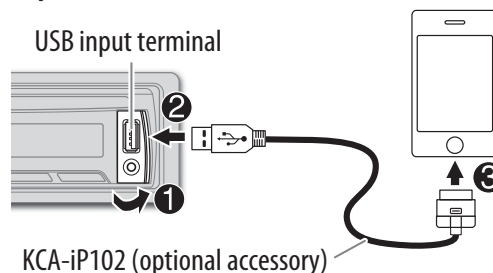
## Preparation:

Install the latest version of the Pandora application onto your device (iPhone/iPod touch), then create an account and log in to Pandora.

- Select [ON] for [PANDORA SRC]. (→ 4)

### Start listening

- 1 Open the Pandora application on your device.
- 2 Connect your device to the USB input terminal.



KCA-iP102 (optional accessory)

The source changes to PANDORA and broadcast starts.

## To

## Do this

Pause or resume playback

Press **6▶||** (or press **ENT▶||** on RC-406).

Thumbs up or thumbs down

Press **▲/▼**.  
• If thumbs down is selected, the current track is skipped.

Skip a track

Press **▶▶|** (or press **▶▶| (+)** on RC-406).

Create a new station

- 1 Press and hold the volume knob.
- 2 Turn the volume knob to select [FROM TRACK] or [FROM ARTIST], then press the knob. A new station is created based on the current song or artist.

Save a station

Press and hold one of the number buttons (**1 to 5**) to store.  
• To select a stored station, press one of the number buttons (**1 to 5**).

Search for a registered station

- 1 Press **Q/↵**.
- 2 Turn the volume knob to make a selection, then press the knob (or press **▲/▼** on RC-406).  
[BY DATE]: According to the registered date.  
[A-Z]: Alphabetical order.
- 3 Turn the volume knob to the desired station, then press the knob.



# iHeartRadio® (for KDC-258U / KDC-158U)

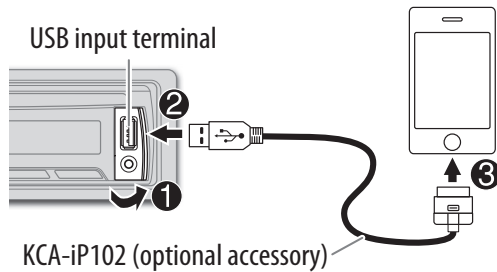
## Preparation:

Install the latest version of iHeart Link for KENWOOD application onto your device (iPhone/ iPod touch), then create an account and log in to iHeartRadio.

- Select [ON] for [IHEART SRC]. (→ 4)

## Start listening

- 1 Open the iHeart Link application on your device.
- 2 Connect your device to the USB input terminal.



- 3 Press **SRC** to select IHEARTRADIO. Broadcast starts automatically.

To	Do this
Pause or resume playback	Press <b>6</b> <b>▶  </b> (or press <b>ENT</b> <b>▶  </b> on RC-406).
Thumbs up or thumbs down for custom station	Press <b>▲</b> <b>👍</b> / <b>▼</b> <b>👎</b> . • If thumbs down is selected, the current track is skipped.
Skip a track for custom station	Press <b>▶▶ </b> (or press <b>▶▶  (+)</b> on RC-406).
Create a new/ custom station	Press <b>1</b> .
Add to favorite stations for live station	Press <b>2</b> .
Scan for live station	Press <b>5</b> .

## Search for a station

- 1 Press **Q/↵**.
- 2 Turn the volume knob to select a category, then press the knob.
- 3 Turn the volume knob to the desired station, then press the knob.  
When a city list appears, you can skip cities in alphabetical order.

(or using RC-406)

Press **▲** / **▼** to search for a station.

- To cancel, press and hold **Q/↵**.

## Skip cities by alphabetical order

While a city list appears during search...

- 1 Turn the volume knob quickly to enter character search.
  - 2 Turn the volume knob or press **◀◀|** / **▶▶|** to select the character to be searched for.
  - 3 Press **▲** / **▼** to move to the previous/next page.
  - 4 Press the volume knob to start searching.
- To cancel, press and hold **Q/↵**.

## Delete a station

While listening to IHEARTRADIO...

- 1 Press the volume knob to enter [FUNCTION].
- 2 Turn the volume knob to select [SYSTEM], then press the knob.
- 3 Turn the volume knob to select [STATION DEL], then press the knob.
- 4 Turn the volume knob to select [LIVE] or [CUSTOM], then press the knob.
- 5 Turn the volume knob to select the desired station to delete, then press the knob.
- 6 Turn the volume knob to select [YES], then press the knob.
- 7 Press and hold **Q/↵** to exit.

To return to the previous setting item or hierarchy, press **Q/↵**.

# AUDIO SETTINGS

While listening to any source...

- 1 Press the volume knob to enter [FUNCTION].
- 2 Turn the volume knob to select [AUDIO CONTROL], then press the knob.
- 3 Turn the volume knob to make a selection (see the following table), then press the knob.  
Repeat step 3 until the desired item is selected or activated.
- 4 Press and hold **Q** / **↵** to exit.

(or using RC-406)

- 1 Press **AUD** to enter [AUDIO CONTROL].
- 2 Press **▲** / **▼** to make a selection, then press **ENT ▶ II**.

To return to the previous setting item or hierarchy, press **Q** / **↵**.

Default: **XX**

<b>SUB-W LEVEL</b>	<b>-15 to +15 (0):</b> Adjusts the subwoofer output level.
<b>BASS LEVEL</b>	<b>-8 to +8 (+6):</b> Adjusts the level to memorize for each source. (Before making an adjustment, select the source you want to adjust.)
<b>MID LEVEL</b>	<b>-8 to +8 (+5):</b>
<b>TRE LEVEL</b>	<b>-8 to +8 (0):</b>
<b>PRESET EQ</b>	<b>DRIVE EQ/ TOP40/ POWERFUL/ ROCK/ POPS/ EASY/ JAZZ/ NATURAL/ USER:</b> Selects a preset equalizer suitable to the music genre. (Select [USER] to use the customized bass, middle, and treble settings.) [DRIVE EQ] is a preset equalizer that reduces noise from the road.
<b>BASS BOOST</b>	<b>LV1/ LV2/ LV3:</b> Selects your preferred bass boost level. ; <b>OFF:</b> Cancels.
<b>LOUDNESS</b>	<b>LV1/ LV2:</b> Selects your preferred low and high frequencies boost to produce a well-balanced sound at a low volume level. ; <b>OFF:</b> Cancels.
<b>SUBWOOFER SET</b>	<b>ON:</b> Turns on the subwoofer output. ; <b>OFF:</b> Cancels.
<b>LPF SUBWOOFER</b>	<b>THROUGH:</b> All signals are sent to the subwoofer. ; <b>85HZ/ 120HZ/ 160HZ:</b> Audio signals with frequencies lower than 85 Hz/ 120 Hz/ 160 Hz are sent to the subwoofer.

<b>SUB-W PHASE</b>	<b>REVERSE (180°)/ NORMAL (0°):</b> Selects the phase of the subwoofer output to be in line with the speaker output for optimum performance. (Selectable only if a setting other than [THROUGH] is selected for [LPF SUBWOOFER].)
<b>FADER</b>	<b>R15 to F15 (0):</b> Adjusts the rear and front speaker output balance.
<b>BALANCE</b>	<b>L15 to R15 (0):</b> Adjusts the left and right speaker output balance.
<b>VOLUME OFFSET (Default: 0)</b>	<b>-8 to +8 (for AUX) ; -8 to 0 (for other sources):</b> Presets the volume adjustment level of each source. (Before adjustment, select the source you want to adjust.)
<b>SOUND RECNSTR (Sound reconstruction)</b>	<b>ON:</b> Creates realistic sound by compensating the high-frequency components and restoring the rise-time of the waveform that are lost in audio data compression. ; <b>OFF:</b> Cancels.

- [SUB-W LEVEL]/ [SUBWOOFER SET]/ [LPF SUBWOOFER]/ [SUB-W PHASE] is selectable only if [SWITCH PREOUT] is set to [SUB-W]. (➔ 4)
- [SUB-W LEVEL]/ [LPF SUBWOOFER]/ [SUB-W PHASE] is selectable only if [SUBWOOFER SET] is set to [ON].

## Muting upon the reception of a phone call

Connect the MUTE wire to your telephone using a commercial telephone accessory. (➔ 15)

When a call comes in, "CALL" appears. (The audio system pauses.)

- To continue listening to the audio system during a call, press **⏻ SRC**. "CALL" disappears and the audio system resumes.

When the call ends, "CALL" disappears. (The audio system resumes.)

## DISPLAY SETTINGS

- 1 Press the volume knob to enter [FUNCTION].
- 2 Turn the volume knob to select [DISPLAY], then press the knob.
- 3 Turn the volume knob to make a selection (see the following table), then press the knob. Repeat step 3 until the desired item is selected or activated.
- 4 Press and hold **Q** / **↵** to exit.

To return to the previous setting item or hierarchy, press **Q** / **↵**.

Default: **XX**

<b>COLOR SELECT*</b>	<p><b>VARIABLE SCAN/ COLOR 01 — COLOR 24/ USER:</b> Selects your preferred button illumination color.</p> <p>You can create your own color (when [COLOR 01] — [COLOR 24] or [USER] is selected). The color you have created can be selected when you select [USER].</p> <ol style="list-style-type: none"> <li>1 Press and hold the volume knob to enter the detailed color adjustment.</li> <li>2 Press <b>◀◀ / ▶▶</b> to select the color (R/ G/ B) to adjust.</li> <li>3 Turn the volume knob to adjust the level (0 — 9), then press the knob.</li> </ol>
<b>DIMMER</b>	<p><b>ON:</b> Dims the display illumination (and button illumination*). ; <b>OFF:</b> Illuminates according to the [BRIGHTNESS] settings.</p>
<b>BRIGHTNESS</b>	<p><b>LVL 0 — LVL 31:</b> Selects your preferred brightness level for display illumination (and button illumination*).</p>
<b>TEXT SCROLL</b>	<p><b>AUTO/ ONCE:</b> Selects whether to scroll the display information automatically, or scroll only once. ; <b>OFF:</b> Cancels.</p>

\* For **KDC-258U** / **KDC-MP258U**.

## MORE INFORMATION

### General

- This unit can only play the following CDs:



- Detailed information and notes about the playable audio files are stated in an online manual on the following web site: [www.kenwood.com/cs/ce/audiofile/](http://www.kenwood.com/cs/ce/audiofile/)

### Playable files

- Playable audio file: MP3 (.mp3), WMA (.wma)
  - Playable disc media: CD-R/CD-RW/CD-ROM
  - Playable disc file format: ISO 9660 Level 1/2, Joliet, Long file name.
  - Playable USB device file system: FAT12, FAT16, FAT32
- Even when audio files comply with the standards listed above, playback may be impossible depending on the types or conditions of media or device.

### Unplayable discs

- Discs that are not round.
- Discs with coloring on the recording surface or discs that are dirty.
- Recordable/ReWritable discs that have not been finalized.
- 8 cm CD. Attempting to insert using an adapter may cause malfunction.

### About USB devices

- This unit can play MP3/WMA/WAV files stored on a USB mass storage class device.
- You cannot connect a USB device via a USB hub.
- Connecting a cable whose total length is longer than 5 m may result in abnormal playback.
- This unit cannot recognize a USB device whose rating is other than 5 V and exceeds 1 A.

### About KENWOOD Music Editor Light and KENWOOD Music Control

- This unit supports the PC application KENWOOD Music Editor Light and Android™ application KENWOOD Music Control.
- When you play audio files with song data added using the KENWOOD Music Editor Light or KENWOOD Music Control, you can search for audio files by Genres, Artists, Albums, Playlists, and Songs.
- KENWOOD Music Editor Light and KENWOOD Music Control are available on the following web site: [www.kenwood.com/cs/ce/](http://www.kenwood.com/cs/ce/)

### About iPod/iPhone

Made for

- iPod touch (1st, 2nd, 3rd, 4th, and 5th generation)
  - iPod classic
  - iPod nano (3rd, 4th, 5th, 6th, and 7th generation)
  - iPhone, iPhone 3G, 3GS, 4, 4S, 5
  - For the latest compatible list and software versions of iPhone/iPod, see: [www.kenwood.com/cs/ce/ipod](http://www.kenwood.com/cs/ce/ipod)
  - To connect devices featuring Lightning connector, both KCA-iP102 (optional accessory) and Apple Lightning to 30-pin Adapter (accessory of the iPod/iPhone) are required.
- Do not leave the Apple Lightning to 30-pin Adapter inside the car to prevent damages caused by the hot temperature.
- You cannot operate iPod if “KENWOOD” or “✓” is displayed on iPod.

## MORE INFORMATION

### About Pandora

- Pandora is available only in the U.S., Australia and New Zealand.
- Because Pandora is a third-party service, the specifications are subject to change without prior notice. Accordingly, compatibility may be impaired, or some or all of the services may become unavailable.
- Some functions of Pandora cannot be operated from this unit.
- For issues using the application, please contact Pandora at [pandora-support@pandora.com](mailto:pandora-support@pandora.com).
- If the version of the OS of the connected iPhone is earlier than 4.0, start the Pandora application before selecting the PANDORA source.

### About iHeartRadio

- iHeartRadio® is a third-party service, therefore the specifications are subject to change without prior notice. Accordingly, compatibility may be impaired or some or all of the services may become unavailable.
- Some iHeartRadio® functionality cannot be operated from this unit.

## TROUBLESHOOTING

Symptom	Remedy
Sound cannot be heard.	<ul style="list-style-type: none"> <li>• Adjust the volume to the optimum level.</li> <li>• Check the cords and connections.</li> </ul>
“PROTECT” appears and no operations can be done.	Check to be sure the terminals of the speaker wires are insulated properly, then reset the unit. If this does not solve the problem, consult your nearest service center.
<ul style="list-style-type: none"> <li>• Sound cannot be heard.</li> <li>• The unit does not turn on.</li> <li>• Information shown on the display is incorrect.</li> </ul>	Clean the connectors. (➔ 2)
The unit does not work at all.	Reset the unit. (➔ 3)
<ul style="list-style-type: none"> <li>• Radio reception is poor.</li> <li>• Static noise while listening to the radio.</li> </ul>	<ul style="list-style-type: none"> <li>• Connect the antenna firmly.</li> <li>• Pull the antenna out all the way.</li> </ul>
“NA FILE” appears.	Make sure the disc contains supported audio files. (➔ 11)
“NO DISC” appears.	Insert a playable disc into the loading slot.
“TOC ERROR” appears.	Make sure the disc is clean and inserted properly.
“PLEASE EJECT” appears.	Reset the unit. If this does not solve the problem, consult your nearest service center.
Disc cannot be ejected.	Press and hold ▲ to forcibly eject the disc. Be careful not to drop the disc when it is ejected. If this does not solve the problem, reset the unit. (➔ 3)
“READ ERROR” appears.	Copy the files and folders onto the USB device again. If this does not solve the problem, reset the USB device or use another USB device.
“NO DEVICE” appears.	Connect a USB device, and change the source to USB again.
“COPY PRO” appears.	A copy-protected file is played.
“NA DEVICE” appears.	Connect a supported USB device, and check the connections.
“NO MUSIC” appears.	Connect a USB device that contains playable audio files.
“iPod ERROR” appears.	<ul style="list-style-type: none"> <li>• Reconnect the iPod.</li> <li>• Reset the iPod.</li> </ul>
Noise is generated.	Skip to another track or change the disc.
Tracks do not play back as you intended them to play.	Playback order is determined when files are recorded.

	<b>Symptom</b>	<b>Remedy</b>
	"READING" keeps flashing.	Do not use too many hierarchical levels or folders.
	Elapsed playing time is not correct.	This is caused by how the tracks are recorded.
	Correct characters are not displayed (e.g. album name).	This unit can only display uppercase letters, numbers, and a limited number of symbols.
Pandora	"ADD ERROR" "SEARCH ERROR"	New station creation is unsuccessful.
	"CHECK DEVICE"	Check the Pandora application on your device.
	"NO SKIPS"	The skip limit has been reached.
	"NO STATIONS"	No stations are found.
	"STATION LIMIT"	The number of registered stations has reached its limit. Retry after deleting unnecessary stations from your device.
	"UPGRADE APP"	Make sure you have installed the latest version of the Pandora application on your device.
	"CONNECT ERROR"	Communication is unstable.
	"RATING ERROR"	Registration of thumbs up/thumbs down has failed.
	"LICENSE ERROR"	You try to access from a country which Pandora is not deliverable.
iHeartRadio	Station cannot be selected.	If "Explicit Content" in [Account Settings] is checked in the web version of iHeartRADIO, custom stations become unavailable.
	"CANNOT CREATE"	Custom station name creation is unsuccessful.
	"CANNOT SAVE"	Addition to the favorite category failed.
	"DISCONNECTED"	Check the connection to the device.
	"NO SKIPS"	The skip limit has been reached. Retry later.
	"NO STATIONS"	No stations are found.

	<b>Symptom</b>	<b>Remedy</b>
iHeartRadio	"NOT CONNECTED"	Link to the application is impossible.
	"IHEARTLINK UP"	Make sure you have installed the latest version of the iHeart Link for KENWOOD application on your device.
	"PLEASE LOGIN"	You haven't log in. Log in again.
	"STATION NOT AVAILABLE"	Broadcast from the station is over.
	"STATION NOT SELECTED"	No station is selected.
	"STREAM ERROR"	Broadcast data is interrupted.
	"THUMB FAILED"	Registration of Thumbs Up/Down has failed.
	"TIMED OUT"	The request has resulted in time-out.

## ⚠ Warning

- The unit can only be used with a 12 V DC power supply, negative ground.
- Disconnect the battery's negative terminal before wiring and mounting.
- Do not connect Battery wire (yellow) and Ignition wire (red) to the car chassis or Ground wire (black) to prevent a short circuit.
- Insulate unconnected wires with vinyl tape to prevent a short circuit.
- Be sure to ground this unit to the car's chassis again after installation.

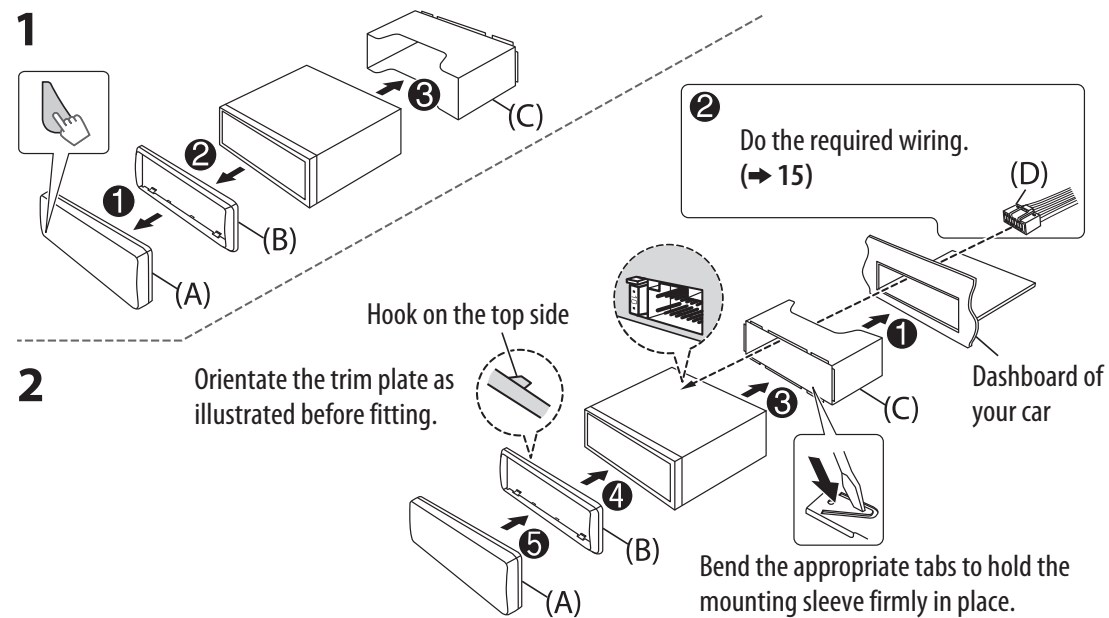
## ⚠ Caution

- For safety's sake, leave wiring and mounting to professionals. Consult the car audio dealer.
- Install this unit in the console of your vehicle. Do not touch the metal parts of this unit during and shortly after use of the unit. Metal parts such as the heat sink and enclosure become hot.
- Do not connect the  $\ominus$  wires of speakers to the car chassis or Ground wire (black), or connect them in parallel.
- Mount the unit at an angle of less than 30°.
- If your vehicle wiring harness does not have the ignition terminal, connect Ignition wire (red) to the terminal on the vehicle's fuse box which provides 12 V DC power supply and is turned on and off by the ignition key.
- After the unit is installed, check whether the brake lamps, blinkers, wipers, etc. on the car are working properly.
- If the fuse blows, first make sure the wires are not touching car's chassis, then replace the old fuse with one that has the same rating.

## Basic procedure

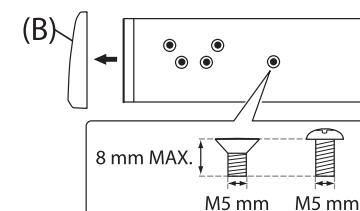
- 1 Remove the key from the ignition switch, then disconnect the  $\ominus$  terminal of the car battery.
- 2 Connect the wires properly.  
See Wiring connection. (→ 15)
- 3 Install the unit to your car.  
See Installing the unit (in-dash mounting).
- 4 Connect the  $\ominus$  terminal of the car battery.
- 5 Reset the unit. (→ 3)

## Installing the unit (in-dash mounting)



## When installing without the mounting sleeve

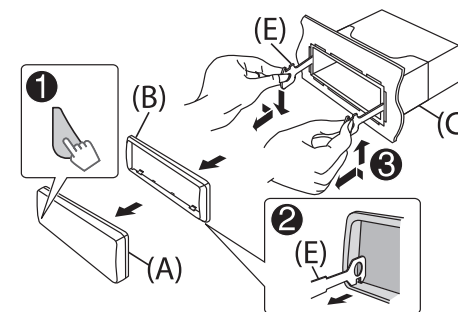
- 1 Remove the mounting sleeve and trim plate from the unit.
- 2 Align the holes in the unit (on both sides) with the vehicle mounting bracket and secure the unit with screws (commercially available).



⚠ Use only the specified screws. Using wrong screws might damage the unit.

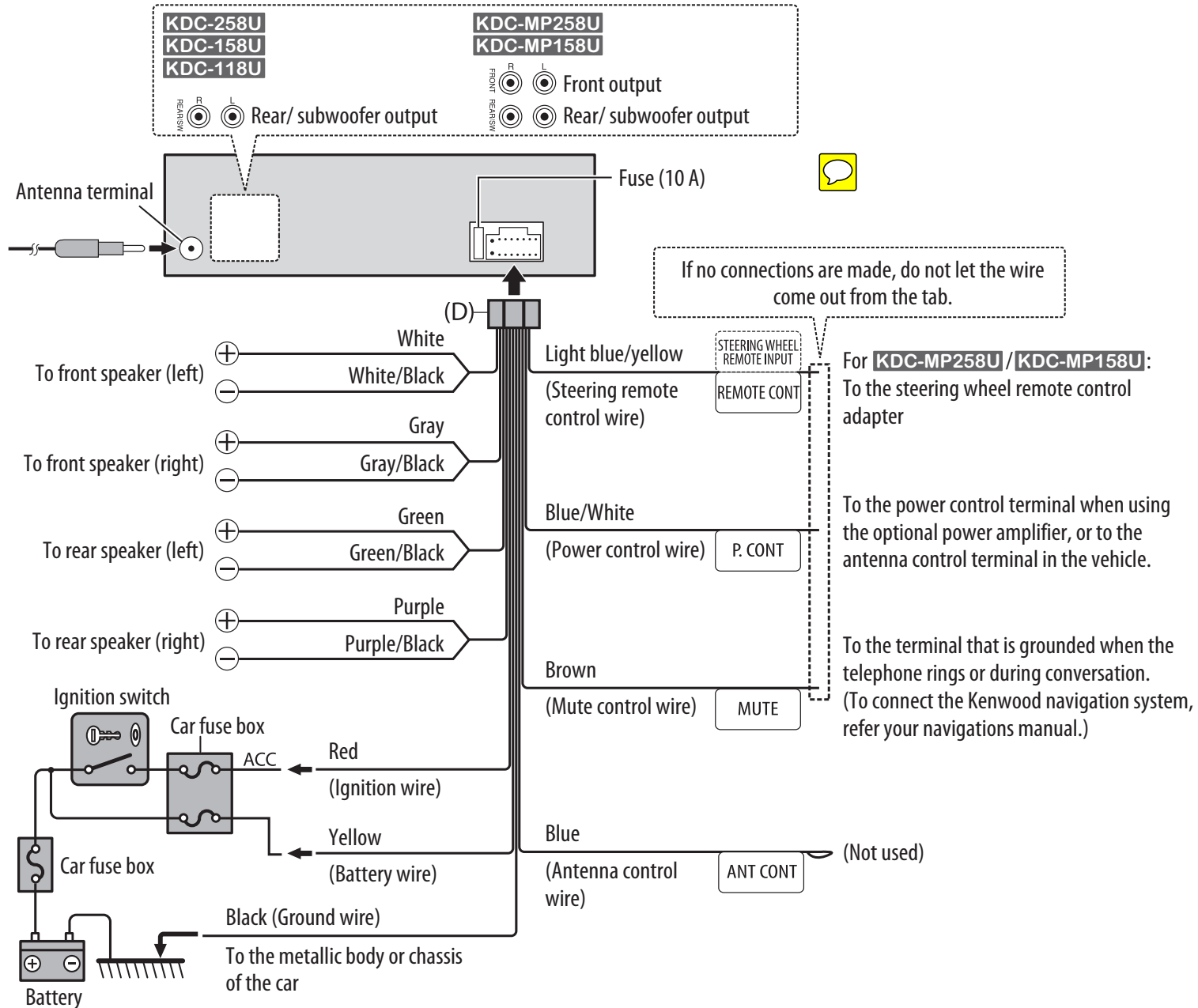
## How to remove the unit

- 1 Detach the faceplate.
- 2 Fit the catch pin on the extraction keys into the holes on both sides of the trim plate, then pull it out.
- 3 Insert the extraction keys deeply into the slots on each side, then follow the arrows as shown on the right.



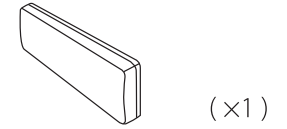


## Wiring connection

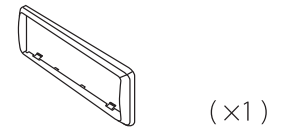


## Part list for installation

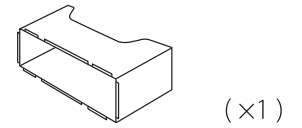
### (A) Faceplate



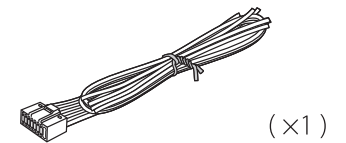
### (B) Trim plate



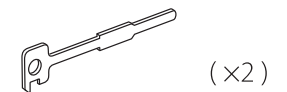
### (C) Mounting sleeve



### (D) Wiring harness



### (E) Extraction key



# SPECIFICATIONS / SPÉCIFICATIONS / ESPECIFICACIONES

Tuner / Tuner / Sintonzador	FM	Frequency Range / Bande de fréquences / Gama de frecuencias	<b>KDC-258U / KDC-158U / KDC-118U</b> 87.9 MHz — 107.9 MHz (200 kHz space / intervalle de / espacio) <b>KDC-MP258U / KDC-MP158U</b> 87.5 MHz — 108.0 MHz (50 kHz space / intervalle de / espacio)
		Usable Sensitivity / Sensibilité utilisable / Sensibilidad útil (S/N = 26 dB)	8.2 dBf (0.71 $\mu$ V/75 $\Omega$ )
		Quieting Sensitivity / Seuil de sensibilité / Sensibilidad de silenciamiento (DIN S/N = 46 dB)	17.2 dBf (2.0 $\mu$ V/75 $\Omega$ )
		Frequency Response / Réponse en fréquence / Respuesta de frecuencia ( $\pm$ 3 dB)	30 Hz — 15 kHz
		Signal-to-Noise Ratio / Taux de Signal/Bruit / Relación señal a ruido (MONO)	64 dB
		Stereo Separation / Séparation stéréo / Separación estéreo (1 kHz)	40 dB
		AM	Frequency Range / Bande de fréquences / Gama de frecuencias
		Usable Sensitivity / Sensibilité utilisable / Sensibilidad útil (S/N = 20 dB)	29 dB $\mu$ (28.2 $\mu$ V)
CD player / Lecteur CD / Reproductor de CD		Laser Diode / Diode laser / Diodo láser	GaAIAs
		Digital Filter / Filtre numérique / Filtro digital (D/A)	8 times over sampling / 8 fois suréchantillonnage / 8 veces sobremuestreo
		Spindle Speed / Vitesse de rotation / Velocidad de giro	500 rpm — 200 rpm / 500 t/min. — 200 t/min. / 500 rpm — 200 rpm (CLV)
		Wow & Flutter / Pleurage et scintillement / Fluctuación y trémolo	Below measurable limit / Non mesurables / Por debajo del límite medible
		Frequency Response / Réponse en fréquence / Respuesta de frecuencia ( $\pm$ 1 dB)	20 Hz — 20 kHz
		Total Harmonic Distortion / Distorsion harmonique totale / Distorsión armónica total (1 kHz)	0.01 %
		Signal-to-Noise Ratio / Taux de Signal/Bruit / Relación señal a ruido (1 kHz)	105 dB
		Dynamic Range / Gamme dynamique / Gama dinámica	90 dB
		Channel Separation / Séparation des canaux / Separación de canales	85 dB
		MP3 Decode / Décodage MP3 / MP3 decodificado	Compliant with MPEG-1/2 Audio Layer-3 / Compatible avec le format MPEG-1/2 Audio Layer-3 / Compatible con MPEG-1/2 Audio Layer-3
	WMA Decode / Décodeur WMA / WMA decodificado	Compliant with Windows Media Audio / Compatible Windows Media Audio / Compatible con Windows Media Audio	

Subject to change without notice. / Sujet à changement sans notification. / Sujeto a cambios sin previo aviso.

USB	USB Standard / Standard USB / Estándar USB	USB 1.1, USB 2.0 (Full speed / Vitesse maximale / Alta velocidad)		
	Maximum Supply Current / Courant d'alimentation maximum / Corriente de alimentación máxima	DC 5 V $\equiv$ 1 A		
	File System / Système de fichiers / Sistema de archivos	FAT12/16/32		
	MP3 Decode / Décodage MP3 / MP3 decodificado	Compliant with MPEG-1/2 Audio Layer-3 / Compatible avec le format MPEG-1/2 Audio Layer-3 / Compatible con MPEG-1/2 Audio Layer-3		
	WMA Decode / Décodeur WMA / WMA decodificado	Compliant with Windows Media Audio / Compatible Windows Media Audio / Compatible con Windows Media Audio		
	WAV Decode / Décodeur WAV / WAV decodificado	Linear-PCM / PCM linéaire / PCM lineal		
Audio	Maximum Output Power / Puissance de sortie maximum / Potencia de salida máxima	50 W $\times$ 4		
	Full Bandwidth Power / Pleine Puissance de Largeur de Bande / Potencia en todo el ancho de banda	22 W $\times$ 4 (at less than 1 % THD / avec moins de 1 % DHT / a menos del 1 % THD)		
	Speaker Impedance / Impédance d'enceinte / Impedancia del altavoz	4 $\Omega$ — 8 $\Omega$		
	Tone Action / Action en tonalité / Acción tonal	Bass / Graves / Graves	200 Hz $\pm$ 8 dB	
		Middle / Médiuims / Registro medio	2.5 kHz $\pm$ 8 dB	
		Treble / Aiguës / Agudos	12.5 kHz $\pm$ 8 dB	
	Preout Level/Load (CD) / Niveau de préamplification/charge (CD) / Nivel de salida de preamplificador/carga (CD)	2 500 mV/10 k $\Omega$		
Preout Impedance / Impédance du préamplificateur / Impedancia de salida de preamplificador	$\leq$ 600 $\Omega$			
Auxiliary / Auxiliaire / Auxiliar	Frequency Response / Réponse en fréquence / Respuesta de frecuencia ( $\pm$ 3 dB)	20 Hz — 20 kHz		
	Input Maximum Voltage / Tension maximum d'entrée / Voltaje de entrada máximo	1 200 mV		
	Input Impedance / Impédance d'entrée / Impedancia de entrada	30 k $\Omega$		
General / Généralités / General	Operating Voltage / Tension de fonctionnement / Voltaje de trabajo	14.4 V (10.5 V — 16 V allowable / admissible / admisibles)		
	Maximum Current Consumption / Consommation de courant maximale / Consumo de corriente máxima	10 A		
	Operational Temperature Range / Plage de températures de fonctionnement / Gama de temperaturas de funcionamiento	0°C — +40°C		
	Installation Size (W $\times$ H $\times$ D) / Dimensions d'installation (L $\times$ H $\times$ P) / Tamaño de instalación (An $\times$ Al $\times$ F)	182 mm $\times$ 53 mm $\times$ 159 mm (7-3/16" $\times$ 2-1/8" $\times$ 6-1/4")		
	Weight / Poids / Peso	1.2 kg (2.65 lbs)		

**CAUTION**

Use of controls or adjustments or performance of procedures other than those specified herein may result in hazardous radiation exposure.

In compliance with Federal Regulations, following are reproductions of labels on, or inside the product relating to laser product safety.

JVC KENWOOD Corporation  
2967-3, ISHIKAWA-MACHI,  
HACHIOJI-SHI, TOKYO, JAPAN

THIS PRODUCT COMPLIES WITH DHHS RULES 21CFR  
SUBCHAPTER J IN EFFECT AT DATE OF MANUFACTURE.

Location : Top Plate

**FCC WARNING**

This equipment may generate or use radio frequency energy. Changes or modifications to this equipment may cause harmful interference unless the modifications are expressly approved in the instruction manual. The user could lose the authority to operate this equipment if an unauthorized change or modification is made.

**FCC NOTE**

This equipment has been tested and found to comply with the limits for a Class B digital device, pursuant to Part 15 of the FCC Rules. These limits are designed to provide reasonable protection against harmful interference in a residential installation. This equipment may cause harmful interference to radio communications, if it is not installed and used in accordance with the instructions. However, there is no guarantee that interference will not occur in a particular installation. If this equipment does cause harmful interference to radio or television reception, which can be determined by turning the equipment off and on, the user is encouraged to try to correct the interference by one or more of the following measures:

- Reorient or relocate the receiving antenna.
- Increase the separation between the equipment and receiver.
- Connect the equipment into an outlet on a circuit different from that to which the receiver is connected.
- Consult the dealer or an experienced radio/TV technician for help.

- “Made for iPod,” and “Made for iPhone” mean that an electronic accessory has been designed to connect specifically to iPod, or iPhone, respectively, and has been certified by the developer to meet Apple performance standards. Apple is not responsible for the operation of this device or its compliance with safety and regulatory standards. Please note that the use of this accessory with iPod or iPhone may affect wireless performance.
- iPhone, iPod, iPod classic, iPod nano, and iPod touch are trademarks of Apple Inc., registered in the U.S. and other countries.
- Lightning is a trademark of Apple Inc.
- Pandora, the Pandora logo, and the Pandora trade dress are trademarks or registered trademarks of Pandora Media, Inc., used with permission.
- iHeartRadio® is a registered mark of Clear Channel Broadcasting, Inc. in the United States and other countries. Such marks are used under license.
- Android is trademark of Google Inc.

**Información acerca de la eliminación de equipos eléctricos y electrónicos al final de la vida útil (aplicable a los países que hayan adoptado sistemas independientes de recogida de residuos)**



Los productos con el símbolo de un contenedor con ruedas tachado no podrán ser desechados como residuos domésticos. Los equipos eléctricos y electrónicos al final de la vida útil, deberán ser reciclados en instalaciones que puedan dar el tratamiento adecuado a estos productos y a sus subproductos residuales correspondientes. Póngase en contacto con su administración local para obtener información sobre el punto de recogida más cercano. Un tratamiento correcto del reciclaje y la eliminación de residuos ayuda a conservar los recursos y evita al mismo tiempo efectos perjudiciales en la salud y el medio ambiente.

**CALIFORNIA, USA ONLY**

This product contains a CR Coin Cell Lithium Battery which contains Perchlorate Material—special handling may apply. See [www.dtsc.ca.gov/hazardouswaste/perchlorate](http://www.dtsc.ca.gov/hazardouswaste/perchlorate)

**Informação sobre a eliminação de pilhas**

Este produto não deve ser eliminado como lixo doméstico geral. Devolva a pilha usada ao revendedor ou entidade autorizada para que a mesma seja devolvida ao fabricante ou importador. A reciclagem e a eliminação de lixo de maneira apropriada ajudarão a conservar os recursos naturais ao mesmo tempo que prevenirão os efeitos prejudiciais à nossa saúde e ao meio ambiente.

# ERRATA / DRUCKFEHLERLISTE / ERRATA / ERRATA / FE DE ERRATAS / ERRATA / ERRATA CORRIGE / СПИСОК ОПЕЧАТОК / ПЕРЕЛІК ПОМИЛОК

Page 4 / Seite 4 / page 4 / pagina 4 / vedere le pagine 4 / página 4 / página 4 / стр. 4 / стор. 4

	✕	OK		✕	OK
ENGLISH	Press and hold <b>DISP SCRL</b> to enter clock adjustment mode directly while in clock display screen. Then, perform steps <b>4</b> to <b>6</b> above to set the clock.	<ol style="list-style-type: none"> <li>1 Press and hold <b>DISP SCRL</b> to enter clock adjustment mode directly while in clock display screen.</li> <li>2 Turn the volume knob to make the settings, then press the knob. Day → Hour → Minute</li> </ol>	ESPAÑOL	Pulse y mantenga pulsado <b>DISP SCRL</b> para ingresar directamente al modo de ajuste del reloj mientras se encuentra en la pantalla de visualización del reloj. A continuación, realice los pasos <b>4</b> a <b>6</b> anteriores y ponga el reloj en hora.	<ol style="list-style-type: none"> <li>1 Pulse y mantenga pulsado <b>DISP SCRL</b> para ingresar directamente al modo de ajuste del reloj mientras se encuentra en la pantalla de visualización del reloj.</li> <li>2 Gire la rueda de volumen para realizar los ajustes y, a continuación, púlsela. Día → Hora → Minutos</li> </ol>
DEUTSCH	Halten Sie <b>DISP SCRL</b> gedrückt, um den Uhreinstellmodus direkt einzuschalten, während der Uhr-Anzeigebildschirm erscheint. Dann führen Sie Schritt <b>4</b> bis <b>6</b> oben zum Einstellen der Uhr aus.	<ol style="list-style-type: none"> <li>1 Halten Sie <b>DISP SCRL</b> gedrückt, um den Uhreinstellmodus direkt einzuschalten, während der Uhr-Anzeigebildschirm erscheint.</li> <li>2 Drehen Sie den Lautstärke-Regler, um die Einstellungen vorzunehmen, und drücken Sie dann den Regler. Tag → Stunde → Minute</li> </ol>	PORTUGUÊS	Mantenha <b>DISP SCRL</b> premido para entrar diretamente no modo de ajuste do relógio enquanto o ecrã de indicação do relógio estiver visualizado. Em seguida, realize os passos de <b>4</b> a <b>6</b> acima para acertar o relógio.	<ol style="list-style-type: none"> <li>1 Mantenha <b>DISP SCRL</b> premido para entrar diretamente no modo de ajuste do relógio enquanto o ecrã de indicação do relógio estiver visualizado.</li> <li>2 Rode o botão de volume para fazer as definições e, em seguida, prima o botão. Dia → Horas → Minutos</li> </ol>
FRANÇAIS	Maintenez enfoncée <b>DISP SCRL</b> pour entrer en mode de réglage de l'horloge directement pendant que l'écran de l'horloge est affiché. Puis, réalisez les étapes <b>4</b> à <b>6</b> ci-dessus pour régler l'horloge.	<ol style="list-style-type: none"> <li>1 Maintenez enfoncée <b>DISP SCRL</b> pour entrer en mode de réglage de l'horloge directement pendant que l'écran de l'horloge est affiché.</li> <li>2 Tournez le bouton de volume pour faire les réglages, puis appuyez sur le bouton. Jour → Heure → Minute</li> </ol>	РУССКИЙ	Нажмите и удерживайте нажатой кнопку <b>DISP SCRL</b> для входа в режим настройки часов напрямую, когда на экране отображаются часы. Затем выполните приведенные выше действия <b>4–6</b> для настройки часов.	<ol style="list-style-type: none"> <li>1 Нажмите и удерживайте нажатой кнопку <b>DISP SCRL</b> для входа в режим настройки часов напрямую, когда на экране отображаются часы.</li> <li>2 Поворачивайте ручку регулировки громкости, чтобы выбрать значения параметров, а затем нажмите ее. День → Час → Минута</li> </ol>
NEDERLANDS	Door <b>DISP SCRL</b> even ingedrukt te houden, wordt de klokinstelfunctie direct geactiveerd voor het display. Voer vervolgens de hierboven beschreven stappen <b>4</b> en <b>6</b> uit om de klok in te stellen.	<ol style="list-style-type: none"> <li>1 Door <b>DISP SCRL</b> even ingedrukt te houden, wordt de klokinstelfunctie direct geactiveerd voor het display.</li> <li>2 Draai de volumeknop om de instellingen te maken en druk vervolgens op de knop. Dag → Ur → Minuut</li> </ol>	УКРАЇНА	Натисніть та утримуйте <b>DISP SCRL</b> , щоб перейти до режиму налаштування годинника безпосередньо з екрану відображення годинника. Потім виконайте описані вище кроки <b>4 - 6</b> , щоб налаштувати годинник.	<ol style="list-style-type: none"> <li>1 Натисніть та утримуйте <b>DISP SCRL</b>, щоб перейти до режиму налаштування годинника безпосередньо з екрану відображення годинника.</li> <li>2 Поворотом регулятора гучності зробіть необхідні налаштування, а потім натисніть регулятор. День → Година → Хвилинка</li> </ol>
ITALIANO	Premere a lungo <b>DISP SCRL</b> per accedere direttamente al modo di regolazione dell'orologio mentre è visualizzato. Eseguire quindi i passi <b>4</b> a <b>6</b> qui sopra per regolarlo.	<ol style="list-style-type: none"> <li>1 Premere a lungo <b>DISP SCRL</b> per accedere direttamente al modo di regolazione dell'orologio mentre è visualizzato.</li> <li>2 Ruotando la manopola eseguire le varie impostazioni e quindi premerla. Giorno → Ora → Minuti</li> </ol>			

## MILITARY

Units purchased through the U.S.A. military exchange service overseas may be serviced under warranty in the continental U.S.A., subject to the following conditions:

- 1) The original warranty is in effect.
- 2) Proof of purchase is provided to the service.

### WARRANTY FOR MILITARY MARKET

Kenwood Corporation is proud of the quality and workmanship of its audio equipment. This unit has been properly designed, tested and inspected before it was shipped to you. If properly installed and operated in accordance with instructions furnished it should give you an optimum reliable performance.

### WARRANTY PERIOD

This product is warranted for a period of (1) year from the date of the original purchase.

### SCOPE OF WARRANTY

Except as specified below, this warranty covers all defects in materials and workmanship of the Kenwood brand products.

During the warranty period, any authorized Kenwood Service Center in the military market listed in the back of this warranty card will provide you free-of-charge both parts and labor required to correct any defect in materials or workmanship.

The following are not covered by this warranty:

1. Voltage conversions.
2. Periodic check-ups which do not disclose any defect covered by the warranty.
3. Cabinets, grilles, other exterior finishes, belts, tape heads, and other non-durable parts and accessories.
4. Units on which the serial number has been effaced, modified or removed.
5. Installation and/or removal charges.
6. Damaged magnetic tapes.
7. House call charges for any repairs.
8. Shipping or delivery charges to or from an authorized Kenwood Service Center.
9. This warranty will not cover any failure that is due to any of the following conditions in accordance with the visual inspection of the authorized Kenwood Service Center:
  - \* Improper maintenance or repair, including the installation of parts or accessories that do not conform to the quality and specifications of the original parts.
  - \* Misuse, abuse, neglect, unauthorized product modification or failure to follow instructions contained in the Owner's Manual.
  - \* Accidental or intentional damages.
  - \* Repairs or attempted repairs by an unauthorized agency. (All repairs must be performed at an authorized Kenwood Service Center.)
  - \* Damages or deteriorations caused during shipment (Claims must be presented to the carrier).
  - \* Damages or deteriorations resulting from removal and/or replacement.

### PURCHASER'S RESPONSIBILITIES

As the purchaser of a new Kenwood brand product, you are requested to do the following in order to obtain Kenwood warranty service:

1. Retain your sales slip or other evidence of purchase for proving your eligibility for requesting Kenwood warranty service.
2. Make your unit available to an authorized Kenwood Service Center in the military market for inspection and approved warranty service, or ship your unit in its original carton box or equivalent, fully insured and shipping charges prepaid, to the authorized Kenwood Service Center.

### LIMITATION OF IMPLIED WARRANTIES

Any and all implied warranties, including warranties of merchantability and fitness for a particular purpose, shall be limited in duration to the length of this warranty.

### EXCLUSION OF CERTAIN DAMAGES

KENWOOD's liability for any defective product is limited to the repair or replacement of said product, at our option, and shall not include damages of any kind, whether incidental, consequential or otherwise, except to the extent prohibited by applicable law.

### KENWOOD AUTHORIZED SERVICE CENTERS IN MILITARY MARKET

#### JAPAN:

##### Yokota

Kenwood Rep., c/o  
Yokota BX, JAAX AAFES-PAC,  
APO San Francisco 96328

##### Zama

Kenwood Rep., c/o  
Zama PX, JAAX AAFES-PAC,  
APO San Francisco 96343

##### Misawa

Kenwood Rep., c/o  
Misawa BX, JAAX AAFES-PAC,  
APO San Francisco 96519

##### Yokosuka

Kenwood Rep., c/o  
A-33, Yokosuka NEX No. 260-010  
FPO Seattle 98760

##### Atsugi

Kenwood Rep., c/o  
Atsugi NEX No. 260-020 FPO Seattle  
98767

##### Iwakuni

Kenwood Rep., c/o  
Marine Corps Exchange, Marine Corps  
Air Station,  
FPO Seattle 98764

##### Sasebo

Sasebo NEX;  
Navy Exchange 260-040  
F.A. Box 115 FPO Seattle 98766

##### Okinawa

Kenwood Rep., c/o  
OWAX, AAFES-PAC, APO San Francisco  
96230

#### KOREA:

Kenwood Rep., c/o  
KOAX Repair Shop, AAFES-PAC  
DD-Camp Market, APO San Francisco  
96488

#### GUAM:

Kenwood Rep., c/o  
Guam NEX No. 230-010,  
FPO San Francisco 96630  
Kenwood Rep., c/o  
GUAX, AAFES-PAC, APO San Francisco  
96334

#### U.S.A.:

##### Hawaii

Kenwood Factory Service  
99-994 Iwaena St., Aiea, Hawaii 96701

##### Alaska

Vista Radio TV,  
861 East Loop Road, Anchorage, Alaska  
99501  
Anchorage Commercial Electronics, Inc.,  
1450 East 9th Ave., Anchorage, Alaska  
99501

##### In The Continental U.S.A.

For Nearest Authorized Service Center;  
Tel: 1-800-536-9663

##### Kenwood Service U.S.A.

Kenwood Factory Service;  
P.O. Box 22745, 2201 East Dominguez  
Street,  
Long Beach, California 90801-5745  
Tel: (310) 639-5300

#### EUROPE:

Please inquire at the military resale outlets where you bought your Kenwood products, or  
KENWOOD ELECTRONICS  
DEUTSCHLAND GMBH:  
Rembrücker-Str. 15, 63150 Heusenstamm,  
Germany  
Tel.: 49-06104-69010

# KENWOOD

# Warranty Card

Identification du produit  
Modelo do aparelho e numero de série  
Model number & serial number

Revendeur & cachet  
Nome da loja e carimbo  
Dealer & stamp

Date d'achat  
Data da compra  
Purchase date

Nom & adresse du client  
Nome e endereço do cliente  
Name & address of customer

### Attention:

This card and receipt (or invoice) are necessary to purchase a new panel in case of theft or damage.

### Attention:

Vous aurez besoin de cette carte et du reçu (ou de la facture) pour acheter un nouveau panneau en cas de vol ou d'endommagement.

### Atenção:

Em caso de dano ou perda do painel frontal, este Certificado de Garantia e a Nota Fiscal de compra serão requisitados para a aquisição de um novo painel.

© B46-0824-00/01 (K) (12/07)

Dear Customer,

Thank you for purchasing this Kenwood product. As mentioned in the pages of this booklet, our warranty is only valid in the countries listed. If your country is not listed please contact your retailer for information on warranty procedure, or write to:

### JVC KENWOOD Customer Information Center

3-12, Moriyacho, Kanagawa-ku, Yokohama-shi, Kanagawa 221-0022, Japan



U.S.A.	KENWOOD USA CORPORATION	
This warranty will be honored only in the U.S.A.	<b>WHO IS PROTECTED</b>	<b>EXCLUSION OF DAMAGES</b>
<b>KENWOOD LIMITED WARRANTY FOR CAR STEREO COMPONENTS</b>	This warranty is enforceable only by the original purchaser.	KENWOOD'S LIABILITY FOR ANY DEFECTIVE PRODUCT IS LIMITED TO THE REPAIR OR REPLACEMENT OF THE PRODUCT AT OUR OPTION. KENWOOD SHALL NOT BE LIABLE FOR: 1. INSTALLATION OR REMOVAL CHARGES, DAMAGE TO OTHER PROPERTY CAUSED BY ANY DEFECTS IN KENWOOD CAR STEREO COMPONENTS, DAMAGES BASED UPON INCONVENIENCE, LOSS OF USE OF THE PRODUCT, OR 2. ANY OTHER DAMAGES WHETHER INCIDENTAL, CONSEQUENTIAL OR OTHERWISE. SOME STATES DO NOT ALLOW LIMITATIONS ON HOW LONG AN IMPLIED WARRANTY LASTS AND/OR DO NOT ALLOW THE EXCLUSION OR LIMITATION OF INCIDENTAL OR CONSEQUENTIAL DAMAGES. SO THE ABOVE LIMITATIONS AND EXCLUSIONS MAY NOT APPLY TO YOU.
<b>HOW LONG IS THE WARRANTY</b>	<b>WHAT WE WILL PAY FOR</b>	
Kenwood U.S.A. Corporation ("Kenwood") warrants this product for a period of one (1) year from the date of original purchase.	We will pay for all labor and material expenses for covered items. Payment of shipping charges is discussed in the next section of this warranty.	
<b>WHAT IS COVERED AND WHAT IS NOT COVERED</b>	<b>HOW TO OBTAIN WARRANTY SERVICE</b>	
Except as specified below, this warranty covers all defects in material and workmanship in Kenwood car stereo components. The following are not covered by the warranty:	If your KENWOOD product ever needs service:	
<ol style="list-style-type: none"> <li>Any product which is not distributed in the U.S.A. by Kenwood or which is not purchased in the U.S.A. from an authorized Kenwood car stereo dealer or an automobile dealer, unless the product is purchased through the U.S.A. Military Exchange Service.</li> <li>Any product on which the serial number has been defaced, modified or removed.</li> <li>Damage, deterioration or malfunction resulting from: <ol style="list-style-type: none"> <li>any shipment of the product (claims must be presented to the carrier);</li> <li>installation or removal of the product;</li> <li>Accident acts of nature, misuse, abuse, neglect, unauthorized product modification or failure to follow instructions supplied with the product;</li> <li>Repair or attempted repair by anyone not authorized by Kenwood;</li> <li>Any other cause which does not relate to a product defect.</li> </ol> </li> </ol>	<ol style="list-style-type: none"> <li>Take or ship it to any KENWOOD Authorized Service Center in the U.S.A. along with a complete description of the problem. If you are uncertain as to whether a Service Center is authorized, please call 1-800-KENWOOD for the nearest Service Center. 1-800-536-9663).</li> <li>Although you must pay any shipping charges if it is necessary to ship the product for warranty service, we will pay the return shipping charges if the repairs are covered by the warranty within the United States.</li> <li>Whenever your units are taken or sent for warranty service, you must include a copy of the original dated sales receipt as proof of warranty coverage.</li> </ol>	
	<b>LIMITATION OF IMPLIED WARRANTIES</b>	
	ALL IMPLIED WARRANTIES, INCLUDING WARRANTIES OF MERCHANTABILITY AND FITNESS FOR A PARTICULAR PURPOSE, ARE LIMITED IN DURATION TO THE LENGTH OF THIS WARRANTY.	This warranty gives you specific legal rights, and you may also have other rights which vary from state to state.  If a problem develops during or after the Limited Warranty Period, or if you have any questions regarding the operation of the product, you should contact your KENWOOD Authorized Dealer or Authorized Service Center. If the problem or your question is not handled to your satisfaction, please contact our Customer Relations Department at the address listed below.  <b>KENWOOD USA CORPORATION</b> <b>P.O. Box 22745, 2201 East Dominguez Street, Long Beach, CA 90801-5745</b> <b>Tel: (310) 639-5300</b>

BRASIL	JVC KENWOOD DO BRASIL COMÉRCIO DE ELETRÔNICOS LTDA	
O fabricante garante o produto identificado na Nota Fiscal de venda ao consumidor contra qualquer defeito de fabricação ou de matéria-prima durante o período de garantia. Esta garantia é válida no território brasileiro desde que o produto tenha sido adquirido no Brasil e distribuído pela JVC KENWOOD do Brasil Comercio de Eletrônicos Ltda.	<b>CONCERTO EM GARANTIA</b>	
<b>PERÍODO DE GARANTIA</b>	É indispensável a apresentação deste Certificado de Garantia devidamente preenchido acompanhado da respectiva Nota Fiscal de compra do produto, desde que não apresente rasuras ou modificações. O consumidor somente terá direito a estes benefícios, quando o produto for entregue diretamente no balcão de um Serviço Autorizado da JVC KENWOOD.	
<b>EXCLUSÃO DA GARANTIA</b>	<b>O QUE NÃO É COBERTO PELA GARANTIA</b>	
<ol style="list-style-type: none"> <li>Produtos com o número de série ou certificado de garantia rasurados, adulterados ou ilegíveis;</li> <li>Defeitos resultantes de acidentes (queda, batidas e etc.), uso em desacordo com o manual de instruções, má utilização, ligação a fonte de tensão diferente da especificada no Manual de Instruções, modificações não autorizadas;</li> <li>Danos causados por agentes da natureza (Ex: chuvas, raios, mareia, enchentes e etc);</li> <li>Defeitos ou danos em decorrência de concertos realizados por pessoas não autorizadas;</li> <li>Defeitos ou danos resultantes do uso de peças ou dispositivos não conformes às especificações da JVC KENWOOD;</li> <li>Danos ou deteriorações aos acabamentos externos, partes cosmiéticas, cabos, chicotes, parafusos de fixação, luvas, alças, bolsos, estojos, adaptadores, antenas, fitas, cassetes gravadoras, CDs ou danos causados por pilhas defeituosas ou com vazamento;</li> <li>Defeitos ou danos devido ao transporte (reclamações devem ser feitas junto a empresa transportadora);</li> <li>Qualquer outra causa que não esteja relacionada a defeitos de matéria-prima e de fabricação;</li> <li>Danos causados por tentativa de roubo ou furto;</li> <li>Danos causados por uso de CDs de má qualidade;</li> <li>Danos decorrentes do desgaste natural do produto;</li> <li>Danos causados por mau uso, armazenamento de líquidos e/ou alimentos, corrosão, oxidação, exposição a umidade ou situações climáticas extremas, riscos ou quedas;</li> </ol>	Instalação e remoção do produto; despesas de frete, seguro e embalagem; são de responsabilidade do proprietário.  Este produto é destinado exclusivamente ao uso doméstico.	
	<b>IMPORTANTE:</b>	
	Para qualquer informação sobre seu equipamento JVC KENWOOD ou para obter o endereço do Serviço Autorizado mais próximo, acesse o site <a href="http://www.kenwood.com.br">www.kenwood.com.br</a> ou ligue para a Central de Atendimento JVC KENWOOD – Tel: +55 (11) 3777-6771 com os dados abaixo preenchidos.	
	<b>JVC KENWOOD DO BRASIL COMÉRCIO DE ELETRÔNICOS LTDA</b> <b>Tel: (11) 3777-6771</b> <b><a href="http://www.kenwood.com.br">www.kenwood.com.br</a></b>	
	Nome do consumidor: _____	
	Endereço: _____ CEP: _____	
	Cidade: _____ Estado: _____	
	Telefone: _____	
	Data da compra: ____ / ____ / ____	Nota Fiscal: _____

CANADA	KENWOOD ELECTRONICS CANADA INC.	
<b>KENWOOD WARRANTY</b>	<b>ENTIRE WARRANTY</b>	
KENWOOD ELECTRONICS CANADA INC. (hereinafter called "KENWOOD"), gives the following written warranty to the original customer of each new Kenwood product distributed in Canada by KENWOOD and purchased from a dealer authorized by KENWOOD.	This warranty constitutes the entire written warranty given by KENWOOD. No person, party, dealer or service centre or their agents or employees are authorized to extend or enlarge this warranty on behalf of KENWOOD by any written or verbal statement or advertisement or promotion, including any extended warranty program or plan that may be offered by the dealer or service centre, unless approved in writing by KENWOOD.	
KENWOOD warrants that each new Kenwood product, under normal use, is free from any defects, subject to the terms and conditions set forth below. If a defect should occur within the warranty period, repairs will be made free of charge for parts and labour when such defects are determined by KENWOOD or its authorized service centres to be attributable to faulty materials or workmanship at time of manufacture. Please contact KENWOOD to confirm if a dealer or service centre is authorized by KENWOOD.	<ol style="list-style-type: none"> <li>Defects resulting from disaster, accident, abuse, misuse, lightning, power surges, neglect or lack of periodic maintenance, unauthorized modification or failure to follow instructions in the owner's manual;</li> <li>Defects or damage as a result of repairs performed by a person or party not authorized by KENWOOD;</li> <li>Defects resulting from the use of parts or devices that do not conform to KENWOOD specifications;</li> <li>Damage or deterioration occurring to any exterior finishes, cosmetic parts, tape heads, adaptors, antennas, cables, tapes, discs or faults or damage caused by defective or leaking batteries;</li> <li>Defects or damage occurring during shipping (claims should be presented to the shipping company);</li> <li>Product voltage and /or line frequency conversions;</li> <li>Product installation or removal charges;</li> </ol>	
<b>WARRANTY PERIOD</b>	<b>TO OBTAIN WARRANTY SERVICE</b>	
This Kenwood product is warranted for parts and labour for a period of one (1) year from the date of original purchase, lease or rental, except for products which are used in a professional or commercial application, which are warranted for a period of ninety (90) days for parts and labour and are subject to the terms and conditions of the warranty.	Should your Kenwood product require warranty service, deliver it to any authorized KENWOOD Service Centre and present the original copy of your bill of sale and this warranty card as proof of warranty or send your product fully insured and freight prepaid to the nearest authorized KENWOOD service centre. To avoid possible shipping damage, make sure the product is properly packed. Include a copy of your original bill of sale and this warranty card as proof of warranty along with your name, home and /or work telephone number(s), a complete return address and a detailed description of the fault(s). Products repaired within warranty will be returned freight prepaid to destinations within Canada. The customer is responsible for all freight and related costs for the return of product(s) to destinations outside Canada.	
<b>WARRANTY EXCLUSIONS</b>	<b>IMPORTANT</b>	
This warranty excludes:	This warranty card by itself is not considered by KENWOOD as a valid proof of purchase. When applying for warranty repairs, you must present the original copy of your bill of sale and this warranty card as proof of warranty, so we recommend that they be kept in a safe place, should they be required in the future.	
<ol style="list-style-type: none"> <li>Products purchased in a foreign country or purchased in Canada and taken to a foreign country;</li> <li>Products purchased from a dealer not authorized by KENWOOD;</li> <li>Products with the serial number defaced, altered or missing;</li> <li>Periodic check-ups which do not disclose any defects covered by this warranty;</li> </ol>	<b>KENWOOD ELECTRONICS CANADA INC.</b> <b>6070 Kestrel Road, Mississauga, Ontario, Canada L5T 1S8</b> <b>Tel.: (905) 670-7211</b> <b>Fax: (905) 670-7248</b>	

GARANTIE KENWOOD	L'ENTIERE GARANTIE	
KENWOOD ELECTRONICS CANADA INC. (ci-après appelée "KENWOOD"), donne par écrit la garantie suivante à l'acheteur original de chaque nouveau produit Kenwood distribué au Canada par KENWOOD et acheté à un concessionnaire autorisé par KENWOOD.	Cette garantie représente l'entière garantie donnée par écrit par KENWOOD. KENWOOD ne se tient aucunement responsable de toutes extensions ni de toutes augmentations de cette garantie faites ou entreprises par toutes personnes, parties, concessionnaires ou centres de service ou par leurs agents ou employés au nom de KENWOOD au moyen d'affirmations verbales ou écrites, d'annonces ou de promotions, y inclus tous programmes ou plans de garantie étendue que puissent offrir les concessionnaires ou les centres de service, à moins que KENWOOD n'y ait consenti par écrit d'avance.	
KENWOOD garantit, sous réserve des termes et des conditions énoncés ci-dessous, que chaque nouveau produit Kenwood dans des conditions d'emploi normales, est exempt de tous défauts. Si un défaut se produit pendant la période de garantie, KENWOOD s'engage à assumer le coût des pièces défectueuses et de la main-d'œuvre nécessaires pour effectuer les réparations pourvu que de tels défauts sont attribuables à des pièces défectueuses employées lors de la fabrication du produit Kenwood ou à la main-d'œuvre tel qu'établi par KENWOOD ou par l'un de ses centres de service autorisés. Appelez KENWOOD pour vérifier si un concessionnaire ou un centre de service est autorisé par KENWOOD.	<ol style="list-style-type: none"> <li>les défauts causés par les désastres, les accidents, les abus, les emplois incorrects, les éclairs, les surtensions de courant, les manques de soins ou d'entretiens périodiques, les modifications non autorisées ou les manques de respect du mode d'emploi;</li> <li>les défauts ou les dommages causés lors de réparations effectuées par une personne ou par une partie non autorisée par KENWOOD;</li> <li>les défauts causés par l'emploi de pièces ou de dispositifs qui ne se conforment pas aux exigences de KENWOOD;</li> <li>les finitions extérieures, les pièces cosmétiques, les têtes de bandes, les adaptateurs, les antennes, les câbles, les bandes, les disques endommagés ou défectueux, les défauts ou dommages causés par des piles défectueuses ou qui fuient;</li> <li>les défauts ou dommages qui se produisent pendant l'expédition des produits Kenwood (On devrait déposer de telles réclamations auprès des compagnies de transport);</li> <li>les conversions de tension et/ou de fréquence du produit;</li> <li>les frais d'installation ou d'enlèvement du produit;</li> </ol>	
<b>PÉRIODE DE GARANTIE</b>	<b>RENONCIATION</b>	
Les pièces et la main-d'œuvre nécessaires pour la réparation des produits Kenwood sont garanties pendant la période d'un (1) an à compter de la date d'achat, de bail ou de location originale, sauf dans les cas où les produits Kenwood sont employés dans un but professionnel ou commercial, où la garantie des pièces et de la main-d'œuvre demeure en vigueur pendant une période de quatre-vingt-dix (90) jours sous réserve des termes et des conditions de la garantie.	KENWOOD renonce à toutes responsabilités de perte de temps, d'emploi du produit, de tous dommages indirects ou accessoires causés à d'autres produits ou biens, de tous inconvénients ou de toutes pertes commerciales.	
<b>EXCLUSIONS DE GARANTIE</b>	<b>AVIS AUX CONSOMMATEURS</b>	
Cette garantie ne couvre pas:	Les stipulations contenues dans la présente garantie écrite n'ont pas pour but de limiter, de modifier, de diminuer, de rejeter ni d'exclure d'autres garanties ni droits énoncés dans n'importe quelles lois ou législations provinciales ou fédérales.	
<ol style="list-style-type: none"> <li>les produits achetés à l'étranger ou achetés au Canada et transportés à l'étranger;</li> <li>les produits achetés à un concessionnaire non autorisé par KENWOOD;</li> <li>les produits dont le numéro de série manque, a été effacé ou manqué;</li> <li>les services d'entretien périodiques qui n'indiquent aucun défaut couvert par cette garantie;</li> </ol>	<b>COMMENT OBTENIR DU SERVICE GARANTIE</b>	
	Au cas où un service sous garantie de votre produit Kenwood s'avère nécessaire, veuillez avoir le produit à rapporter quel centre de service KENWOOD et présenter la copie originale du contrat de vente et cette carte de garantie en tant que preuve de garantie ou veuillez faire parvenir votre produit assuré et être payé au centre de service KENWOOD autorisé le plus proche. Pour éviter toutes possibilités de dommages pendant le transport, veuillez bien emballer le produit. Veuillez inclure une copie du contrat de vente original et cette carte de garantie en tant que preuve de garantie aussi bien que votre nom, numéro de téléphone au poste de travail et/ou au domicile, votre adresse et une description détaillée des défauts. Les produits sous garantie réparés seront retournés port payé aux destinations à l'intérieur du Canada. Le consommateur sera responsable de tous frais de transport et d'autres frais qui y rapportent pour faire expédier les produits à destination à l'extérieur du Canada.	
	<b>IMPORTANT</b>	
	KENWOOD ne considère pas cette garantie toute seule comme étant une preuve d'achat valide. Lorsqu'on demande du service sous garantie, il faudra présenter la copie originale du contrat de vente aussi bien que cette carte de garantie en tant que preuve de garantie. On recommande de les conserver dans un lieu sûr au cas où elles s'avèreraient nécessaires à l'avenir.	
	<b>KENWOOD ELECTRONICS CANADA INC.</b> <b>6070 Kestrel Road, Mississauga, Ontario, Canada L5T 1S8</b> <b>Téléphone: (905) 670-7211</b> <b>Télécopieur: (905) 670-7248</b>	

## Free Manuals Download Website

<http://myh66.com>

<http://usermanuals.us>

<http://www.somanuals.com>

<http://www.4manuals.cc>

<http://www.manual-lib.com>

<http://www.404manual.com>

<http://www.luxmanual.com>

<http://aubethermostatmanual.com>

Golf course search by state

<http://golfingnear.com>

Email search by domain

<http://emailbydomain.com>

Auto manuals search

<http://auto.somanuals.com>

TV manuals search

<http://tv.somanuals.com>