

# KENWOOD

**KDC-262U**  
**KDC-162U**  
**KDC-122U**

**KDC-MP262U**  
**KDC-MP162U**  
**KDC-220U**

CD-RECEIVER

## INSTRUCTION MANUAL

AMPLI-TUNER LECTEUR DE CD

## MODE D'EMPLOI

REPRODUCTOR DE DISCOS COMPACTOS RECEPTOR DE FM/AM

## MANUAL DE INSTRUCCIONES

JVCKENWOOD Corporation

**Take the time to read through this instruction manual. Familiarity with installation and operation procedures will help you obtain the best performance from your new CD-receiver.**

### For your records

Record the serial number, found on the back of the unit, in the spaces designated on the warranty card, and in the space provided below. Refer to the model and serial numbers whenever you call upon your Kenwood dealer for information or service on the product.

Model KDC-262U/ KDC-162U/ KDC-122U/ KDC-MP262U/

KDC-MP162U/ KDC-220U

Serial number \_\_\_\_\_

**US Residents Only**



**Register Online**

Register your Kenwood product at [www.Kenwoodusa.com](http://www.Kenwoodusa.com)

# CONTENTS

BEFORE USE	2
BASICS	3
GETTING STARTED	4
RADIO	5
AUX	6
CD / USB / iPod / ANDROID	7
Pandora® (for KDC-262U / KDC-162U / KDC-220U)	9
iHeartRadio® (for KDC-262U / KDC-162U / KDC-220U)	10
AUDIO SETTINGS	11
DISPLAY SETTINGS	12
TROUBLESHOOTING	12
MORE INFORMATION	14
SPECIFICATIONS	15
INSTALLATION / CONNECTION	16

## How to read this manual

- Operations are explained mainly using buttons on the faceplate of **KDC-262U**.
- [XX] indicates the selected items.
- (➔ XX) indicates references are available on the stated page.

# BEFORE USE

## ⚠ Warning

Do not operate any function that takes your attention away from safe driving.

## ⚠ Caution

### Volume setting:

- Adjust the volume so that you can hear sounds outside the car to prevent accidents.
- Lower the volume before playing digital sources to avoid damaging the speakers by the sudden increase of the output level.

### General:

- Avoid using the external device if it might hinder safe driving.
- Make sure all important data has been backed up. We shall bear no responsibility for any loss of recorded data.
- Never put or leave any metallic objects (such as coins or metal tools) inside the unit, to prevent a short circuit.
- If a disc error occurs due to condensation on the laser lens, eject the disc and wait for the moisture to evaporate.

### Remote control (RC-406):

- Do not leave the remote control in hot places such as on the dashboard.
- The Lithium battery is in danger of explosion if replaced incorrectly. Replace it only with the same or equivalent type.
- The battery pack or batteries shall not be exposed to excessive heat such as sunshine, fire or the like.
- Keep the battery out of reach of children and in its original packaging when not in used. Dispose of used batteries promptly. If swallowed, contact a physician immediately.

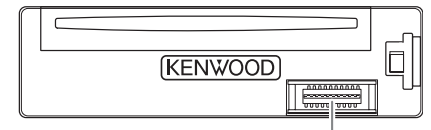
## Maintenance

**Cleaning the unit:** Wipe off dirt on the faceplate with a dry silicone or soft cloth.

**Cleaning the connector:** Detach the faceplate and clean the connector gently with a cotton swab, being careful not to damage the connector.

### Handling discs:

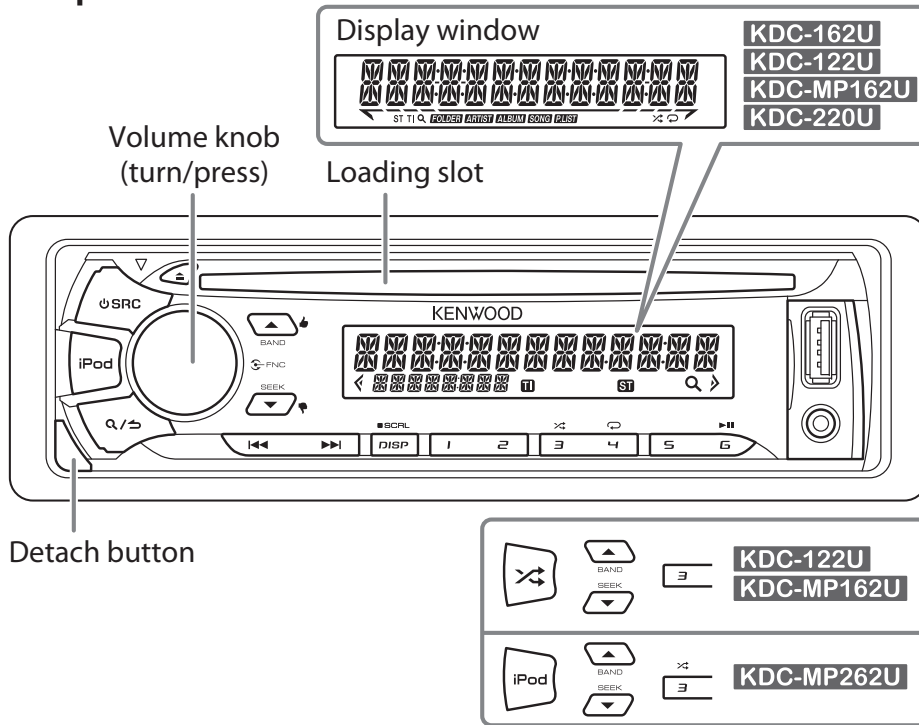
- Do not touch the recording surface of the disc.
- Do not stick tape etc. on the disc, or use a disc with tape stuck on it.
- Do not use any accessories for the disc.
- Clean from the center of the disc and move outward.
- Clean the disc with a dry silicone or soft cloth. Do not use any solvents.
- When removing discs from this unit, pull them out horizontally.
- Remove burrs from the center hole and disc edge before inserting a disc.



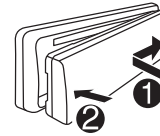
Connector (on the reverse side of the faceplate)

# BASICS

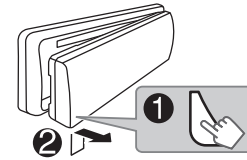
## Faceplate



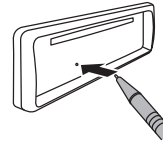
### Attach



### Detach

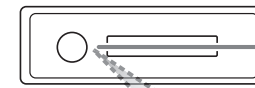


### How to reset

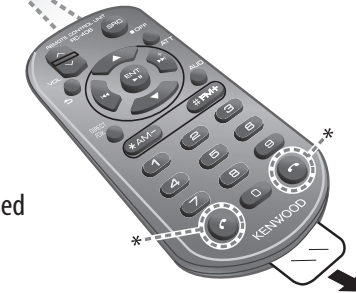


Your preset adjustments will also be erased.

## Remote control (RC-406)



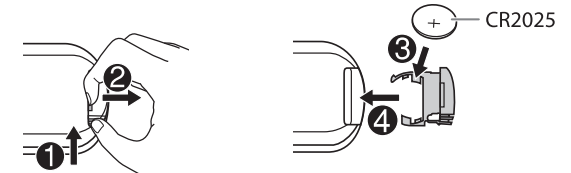
Remote sensor (Do not expose to bright sunlight.)



\* Not used

Pull out the insulation sheet when using for the first time.

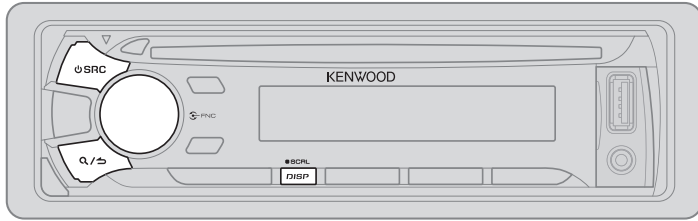
### How to replace the battery



To	On the faceplate	On the remote control
Turn on the power	Press <b>SRC</b> . • Press and hold to turn off the power.	Press and hold <b>SRC</b> to turn off the power. (Pressing <b>SRC</b> does not turn on the power.)
Adjust the volume	Turn the volume knob.	Press <b>VOL ^</b> or <b>VOL v</b> . Press <b>ATT</b> during playback to attenuate the sound. • Press again to cancel.
Select a source	Press <b>SRC</b> repeatedly.	Press <b>SRC</b> repeatedly.
Change the display information*	Press <b>DISP SCRL</b> repeatedly. • Press and hold to scroll the current display information.	(not available)

\* For **KDC-MP262U** / **KDC-MP162U** : You can also select to turn off the display information by pressing **DISP SCRL** repeatedly.

# GETTING STARTED



## 1 Cancel the demonstration

When you turn on the power (or after you reset the unit), the display shows: "CANCEL DEMO" → "PRESS" → "VOLUME KNOB"

- 1 Press the volume knob.  
[YES] is selected for the initial setup.
- 2 Press the volume knob again.  
"DEMO OFF" appears.

## 2 Set the clock

- 1 Press the volume knob to enter [FUNCTION].
- 2 Turn the volume knob to select [CLOCK], then press the knob.
- 3 Turn the volume knob to select [CLOCK ADJUST], then press the knob.
- 4 Turn the volume knob to make the settings, then press the knob.  
Day → Hour → Minute
- 5 Turn the volume knob to select [CLOCK FORMAT], then press the knob.
- 6 Turn the volume knob to select [12H] or [24H], then press the knob.
- 7 Press and hold Q/S to exit.

To return to the previous setting item, press Q/S.

(For **KDC-162U** / **KDC-122U** / **KDC-MP162U** / **KDC-220U**)

While in clock display screen...

Press and hold **DISP SCRL** to enter clock adjustment mode directly.  
Then, perform step 4 to set the clock.

## 3 Set the initial settings

- 1 Press **SRC** repeatedly to enter STANDBY.
- 2 Press the volume knob to enter [FUNCTION].
- 3 Turn the volume knob to make a selection (see the following table), then press the knob.
- 4 Repeat step 3 until the desired item is selected or activated.
- 5 Press and hold Q/S to exit.

To return to the previous setting item, press Q/S.

Default: **XX**

### AUDIO CONTROL

<b>SWITCH PREOUT</b>	<b>REAR/ SUB-W</b> or <b>REAR/ SUBWOOFER</b> : Selects whether rear speakers or a subwoofer are connected to the line out terminals on the rear (through an external amplifier).
<b>SP SELECT</b>	<b>OFF/ 5/4/ 6 × 9/6/ OEM</b> : Selects according to the speaker size (5 inches or 4 inches, 6×9 inches or 6 inches) or OEM speakers for optimum performance.

### DISPLAY

<b>EASY MENU</b>	(For <b>KDC-262U</b> / <b>KDC-MP262U</b> ) <b>ON</b> : Both display and button illumination change to white color when entering [FUNCTION]. ; <b>OFF</b> : Both display and button illumination remain as [COLOR SELECT] color. (→ 12)
------------------	---

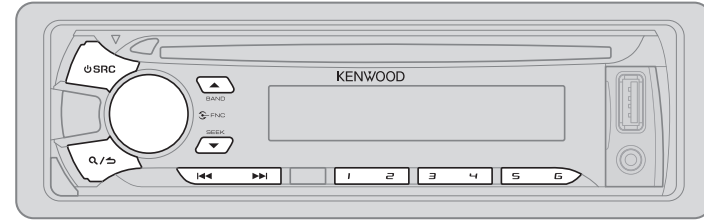
### TUNER SETTING

<b>PRESET TYPE</b>	<b>NORMAL</b> : Memorizes one station for each preset button in each band (FM1/ FM2/ FM3/ AM). ; <b>MIX</b> : Memorizes one station for each preset button, regardless of the selected band.
--------------------	--

## GETTING STARTED

SYSTEM	
<b>KEY BEEP</b>	<b>ON:</b> Activates the keypress tone. ; <b>OFF:</b> Deactivates.
SOURCE SELECT	
<b>PANDORA SRC</b>	<b>ON:</b> Enables PANDORA in source selection. ; <b>OFF:</b> Disables. (→ 9)
<b>IHEART SRC</b>	<b>ON:</b> Enables IHEARTRADIO in source selection. ; <b>OFF:</b> Disables. (→ 10)
<b>BUILT-IN AUX</b>	<b>ON:</b> Enables AUX in source selection. ; <b>OFF:</b> Disables. (→ 6)
<b>CD READ</b>	<b>1:</b> Automatically distinguishes between audio file disc and music CD. ; <b>2:</b> Forces to play as a music CD. No sound can be heard if an audio file disc is played.
F/W UPDATE	
UPDATE SYSTEM	
<b>F/W UP xx.xx</b>	<b>YES:</b> Starts upgrading the firmware. ; <b>NO:</b> Cancels (upgrading is not activated). For details on how to update the firmware, see: <a href="http://www.kenwood.com/cs/ce/">www.kenwood.com/cs/ce/</a>
CLOCK	
<b>CLOCK DISPLAY</b>	<b>ON:</b> The clock time is shown on the display even when the unit is turned off. ; <b>OFF:</b> Cancels.

## RADIO



### Search for a station

- 1 Press **SRC** repeatedly to select TUNER.
  - 2 Press **BAND** repeatedly (or press **#FM+ / \*AM-** on RC-406) to select FM1/ FM2/ FM3/ AM.
  - 3 Press **◀◀ / ▶▶** (or press **◀◀ / ▶▶ (+)** on RC-406) to search for a station.
- To change the searching method for **◀◀ / ▶▶**: Press **▼ SEEK** repeatedly.  
**AUTO1** : Automatically search for a station.  
**AUTO2** : Search for a preset station.  
**MANUAL** : Manually search for a station.
  - To store a station: Press and hold one of the number buttons (**1** to **6**).
  - To select a stored station: Press one of the number buttons (**1** to **6**) (or press one of the number buttons (**1** to **6**) on RC-406).

### Direct Access Tuning (using RC-406)

- 1 Press **DIRECT** to enter Direct Access Tuning.
  - 2 Press the number buttons to enter a frequency.
  - 3 Press **ENT ▶||** to search for a station.
- To cancel, press **↶** or **DIRECT**.
  - If no operation is done for 10 seconds after step 2, Direct Access Tuning is automatically canceled.

### Other settings

- 1 Press the volume knob to enter [FUNCTION].
- 2 Turn the volume knob to make a selection (→ 6), then press the knob.
- 3 Repeat step 2 until the desired item is selected or activated.
- 4 Press and hold **Q/↶** to exit.

To return to the previous setting item, press **Q/↶**.

## RADIO

Default: **XX**

### TUNER SETTING

<b>AUTO MEMORY</b>	<b>YES:</b> Automatically starts memorizing 6 stations with good reception. ; <b>NO:</b> Cancels. • Selectable only if [ <b>NORMAL</b> ] is selected for [ <b>PRESET TYPE</b> ]. (➔ 4)
<b>MONO SET</b>	<b>ON:</b> Improves the FM reception, but the stereo effect may be lost. ; <b>OFF:</b> Cancels.
<b>NEWS SET*</b>	<b>ON:</b> The unit will temporarily switch to News Programme if available. ; <b>OFF:</b> Cancels.
<b>REGIONAL*</b>	<b>ON:</b> Switches to another station only in the specific region using the "AF" control. ; <b>OFF:</b> Cancels.
<b>AF SET*</b>	<b>ON:</b> Automatically searches for another station broadcasting the same program in the same Radio Data System network with better reception when the current reception is poor. ; <b>OFF:</b> Cancels.
<b>TI*</b>	<b>ON:</b> Allows the unit to temporarily switch to Traffic Information if available ("TI" lights up). ; <b>OFF:</b> Cancels.
<b>PTY SEARCH*</b>	Selects the available Program Type (see below), then, press <b>◀◀ / ▶▶</b> to start.

### CLOCK

<b>TIME SYNC*</b>	<b>ON:</b> Synchronizes the unit's time to the Radio Data System station time. ; <b>OFF:</b> Cancels.
-------------------	---

\* For **KDC-MP262U** / **KDC-MP162U**: Only for FM source.

- [**MONO SET**] / [**NEWS SET**] / [**REGIONAL**] / [**AF SET**] / [**TI**] / [**PTY SEARCH**] is selectable only when the band is FM1/ FM2/ FM3.
- Available Program Type:  
**SPEECH:** NEWS, AFFAIRS, INFO (information), SPORT, EDUCATE, DRAMA, CULTURE, SCIENCE, VARIED, WEATHER, FINANCE, CHILDREN, SOCIAL, RELIGION, PHONE IN, TRAVEL, LEISURE, DOCUMENT  
**MUSIC:** POP M (music), ROCK M (music), EASY M (music), LIGHT M (music), CLASSICS, OTHER M (music), JAZZ, COUNTRY, NATION M (music), OLDIES, FOLK M (music)  
The unit will search for the Program Type categorized under [**SPEECH**] or [**MUSIC**] if selected.
- If the volume is adjusted during reception of traffic information or news bulletin, the adjusted volume is memorized automatically. It will be applied the next time traffic information or news bulletin is turned on.

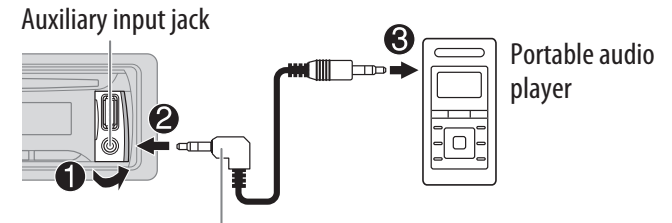
## AUX

### Preparation:

Select [**ON**] for [**BUILT-IN AUX**]. (➔ 5)

### Start listening

- 1 Connect a portable audio player (commercially available).



3.5 mm (1/8") stereo mini plug with "L" shaped connector (commercially available)

- 2 Press **⏻ SRC** repeatedly to select **AUX**.
- 3 Turn on the portable audio player and start playback.

### Set the AUX name

While listening to a portable audio player connected to the unit...

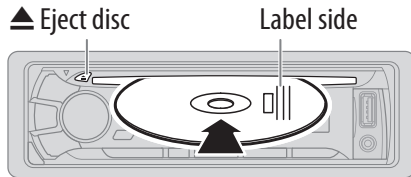
- 1 Press the volume knob to enter [**FUNCTION**].
- 2 Turn the volume knob to select [**SYSTEM**], then press the knob.
- 3 Turn the volume knob to select [**AUX NAME SET**], then press the knob.
- 4 Turn the volume knob to make a selection, then press the knob.  
AUX (default) / DVD / PORTABLE / GAME / VIDEO / TV
- 5 Press and hold **⏻ / ⏩** to exit.

To return to the previous setting item, press **⏻ / ⏩**.

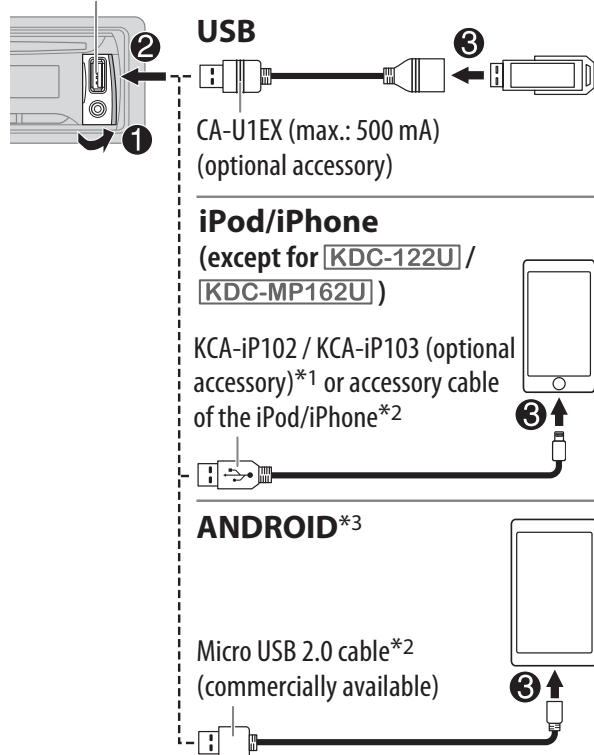
# CD / USB / iPod / ANDROID

## Start playback

The source changes automatically and playback starts.

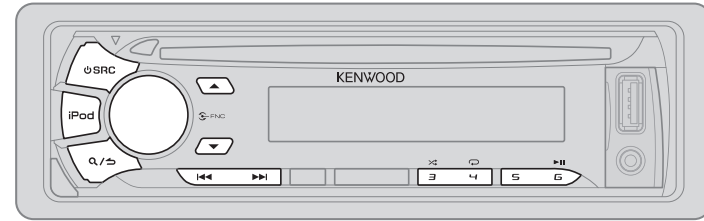
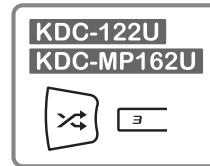


## USB input terminal



\*1 KCA-iP102 : 30-pin type, KCA-iP103 : Lightning type

\*2 Do not leave the cable inside the car when not using.



To	On the faceplate	On the remote control
Playback / pause	Press <b>6</b> ►  .	Press <b>ENT</b> ►  .
Reverse / Fast-forward*4	Press and hold ◀◀ / ▶▶.	Press and hold ◀◀ / ▶▶ (+).
Select a track/file	Press ◀◀ / ▶▶.	Press ◀◀ / ▶▶ (+).
Select a folder*5	Press ▲ / ▼.	Press <b>#FM+</b> / <b>*AM-</b> .
Repeat play*6	Press <b>4</b> ↻ repeatedly. TRACK REPEAT/ REPEAT OFF : Audio CD FILE REPEAT/ FOLDER REPEAT/ REPEAT OFF : MP3/WMA/WAV file, iPod or ANDROID FILE REPEAT/ REPEAT OFF : KME Light/ KMC file*7	
Random play*6	Press <b>3</b> ↻ or ↻ repeatedly. DISC RANDOM/ RANDOM OFF : Audio CD FOLDER RANDOM/ RANDOM OFF : MP3/WMA/WAV file, KME Light/ KMC file, iPod or ANDROID Press and hold <b>3</b> ↻ or ↻ to select ALL RANDOM.*8	
Select control mode	While in iPod source, press and hold <b>iPod</b> . MODE ON : Control from the iPod*9 MODE OFF : Control from the unit While in ANDROID source, (➔ <b>8</b> , [ANDROID SETUP])	
Select music drive (➔ <b>8</b> , [MUSIC DRIVE])	Press <b>5</b> repeatedly. The stored songs in the following start playback. • Selected internal or external memory of a smartphone (Mass Storage Class). • Selected drive of a multiple drives device.	



## CD / USB / iPod / ANDROID

- \*3 When connecting an Android device, "Press [VIEW] to install KENWOOD MUSIC PLAY APP" is shown. Follow the instructions to install the application. You can also install the latest version of KENWOOD MUSIC PLAY application on your Android device before connecting. (➔ 14).
- \*4 For ANDROID: Applicable only when [BROWSE MODE] is selected. (➔ [ANDROID SETUP])
- \*5 For CD: Only for MP3/WMA files. This does not work for iPod/ ANDROID.
- \*6 For iPod/ ANDROID: Applicable only when [MODE OFF]/ [BROWSE MODE] is selected.
- \*7 KME Light : KENWOOD Music Editor Light, KMC : KENWOOD Music Control (➔ 14)
- \*8 For CD: Only for MP3/WMA files.
- \*9 You can still play/pause, file skip, fast-forward or reverse files from the unit.

### Select a file from a folder/list

- 1 Press **Q/↵**.
- 2 Turn the volume knob to select a folder/list, then press the knob.
- 3 Turn the volume knob to select a file, then press the knob.

#### Quick Search

If you have many files, you can search through them quickly.

#### For USB (for KME Light/ KMC files):

Press **⏪ / ⏩** to search at a preset skip search ratio. (➔ [SKIP SEARCH])

Press and hold **⏪ / ⏩** to search at a 10% ratio.

- Not applicable for CD and MP3/WMA/WAV files.

#### For iPod:

You can search for a file according to the first character.

- 1 Turn the volume knob quickly to enter character search.
- 2 Turn the volume knob to select the character.  
To search for a character other than A to Z and 0 to 9, enter only "\*".
- 3 Press **⏪ / ⏩** to move to the entry position.
  - You can enter up to 3 characters.
- 4 Press the volume knob to start searching.

- To return to the root folder/ first file/ top menu, press **5**.
- To return to the previous setting item, press **Q/↵**.
- To cancel, press and hold **Q/↵**.
- For iPod, applicable only when [MODE OFF] is selected. (➔ 7)
- For ANDROID, applicable only when [BROWSE MODE] is selected. (➔ [ANDROID SETUP])

### Direct Music Search (using RC-406)

- 1 Press **DIRECT**.
- 2 Press the number buttons to enter a track/file number.
- 3 Press **ENT ▶ ||** to search for music.
  - To cancel, press **↵** or **DIRECT**.
  - Not available if Random Play is selected.
  - Not applicable for iPod, ANDROID, KME Light/ KMC file.

### Listen to TuneIn Radio/ TuneIn Radio Pro/ Aupeo

While listening to TuneIn Radio, TuneIn Radio Pro or Aupeo, connect the iPod/iPhone to the USB input terminal of the unit.

- The unit will output the sound from these applications.

### Other settings

- 1 Press the volume knob to enter [FUNCTION].
- 2 Turn the volume knob to make a selection (see the following table), then press the knob.
- 3 Repeat step 2 until the desired item is selected or activated.
- 4 Press and hold **Q/↵** to exit.

To return to the previous setting item, press **Q/↵**.

Default: **XX**

### ANDROID SETUP

**BROWSE MODE:** Control from the unit (using KENWOOD MUSIC PLAY application). ;

**HAND MODE:** Control other media player applications from the Android device (without using KENWOOD MUSIC PLAY application). However, you can still play/pause and file skip from the unit.

### USB

**MUSIC DRIVE** **DRIVE CHANGE:** The next drive ([DRIVE 1] to [DRIVE 5]) is selected automatically and playback starts.  
Repeat steps **1** to **3** to select the following drives.

**SKIP SEARCH** **0.5%/ 1%/ 5%/ 10%:** While listening to iPod, ANDROID or KME Light/ KMC file, selects the skip search ratio over the total files.



# Pandora® (for KDC-262U / KDC-162U / KDC-220U)

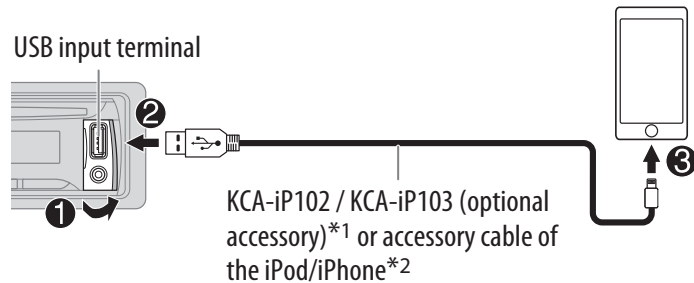
## Preparation:

Install the latest version of the Pandora application on your device (iPhone/ iPod touch), then create an account and log in to Pandora.

- Select [ON] for [PANDORA SRC]. (→ 5)

## Start listening

- 1 Open the Pandora application on your device.
- 2 Connect your device to the USB input terminal.



The source changes to PANDORA and broadcast starts.

To	On the faceplate	On the remote control
Playback / pause	Press <b>6</b> ►  .	Press <b>ENT</b> ►  .
Skip a track	Press ►► .	Press ►►  (+).
Thumbs up or thumbs down*3	Press ▲👍 / ▼👎.	Press <b>#FM+</b> / <b>*AM-</b> .

\*1 KCA-iP102 : 30-pin type, KCA-iP103 : Lightning type

\*2 Do not leave the cable inside the car when not using.

\*3 If thumbs down is selected, the current track is skipped.

## Create and save a new station

- 1 Press and hold the volume knob.
- 2 Turn the volume knob to select [FROM TRACK] or [FROM ARTIST], then press the knob.  
A new station is created based on the current song or artist.
- 3 Press and hold one of the number buttons (1 to 5) to store.

To select a stored station, press one of the number buttons (1 to 5).

## Search for a registered station

- 1 Press **Q** / **↶**.
- 2 Turn the volume knob to make a selection, then press the knob.  
[BY DATE]: According to the registered date  
[A-Z]: Alphabetical order
- 3 Turn the volume knob to the desired station, then press the knob.

To cancel, press and hold **Q** / **↶**.

(or using RC-406)

Press **▲** / **▼** to search for a station, then press **ENT** ►||.

## Bookmark a song or artist information

- 1 Press and hold **▲**.
- 2 Turn the volume knob to make a selection, then press the knob.  
[THIS TRACK]: Current song information  
[THIS ARTIST]: Current artist information  
"BOOKMARKED" appears and the information is stored to your device.  
The bookmark is available on your Pandora account but not on this unit.

# iHeartRadio® (for **KDC-262U** / **KDC-162U** / **KDC-220U**)

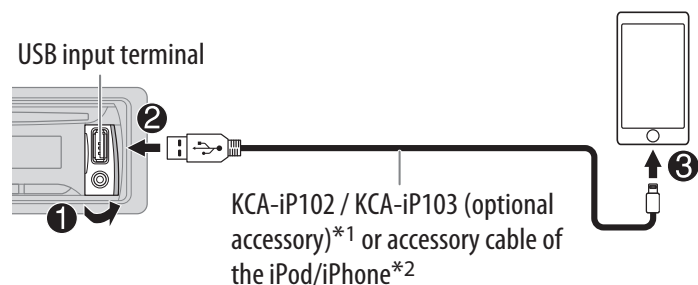
## Preparation:

Install the latest version of iHeart Link for KENWOOD application on your device (iPhone/ iPod touch), then create an account and log in to iHeartRadio.

- Select [ON] for [IHEART SRC]. (→ 5)

## Start listening

- 1 Open the iHeart Link application on your device.
- 2 Connect your device to the USB input terminal.



- 3 Press **⏻ SRC** repeatedly to select IHEARTRADIO. Broadcast starts automatically.

To	On the faceplate	On the remote control
Playback / pause	Press <b>6 ▶ II.</b>	Press <b>ENT ▶ II.</b>
Skip a track for custom station	Press <b>▶▶ I.</b>	Press <b>▶▶ I (+).</b>
Thumbs up or thumbs down*3 for custom station	Press <b>▲👍 / ▼👎.</b>	—
Create a new/custom station	Press <b>1.</b>	—
Add to favorite stations for live station	Press <b>2.</b>	—
Scan for live station	Press <b>5.</b>	—

\*1 KCA-iP102 : 30-pin type, KCA-iP103 : Lightning type

\*2 Do not leave the cable inside the car when not using.

\*3 If thumbs down is selected, the current track is skipped.

## Search for a station

- 1 Press **Q / ↵.**
- 2 Turn the volume knob to select a category, then press the knob.
- 3 Turn the volume knob to the desired station, then press the knob.  
When a city list appears, you can skip cities in alphabetical order.

To cancel, press and hold **Q / ↵.**

(or using RC-406)

Press **▲ / ▼** to search for a station, then press **ENT ▶ II.**

## Skip cities by alphabetical order

While a city list appears during search...

- 1 Turn the volume knob quickly to enter character search.
- 2 Turn the volume knob or press **◀◀ / ▶▶** to select the character to be searched for.
- 3 Press **▲ / ▼** to move to the previous/next page.
- 4 Press the volume knob to start searching.

To cancel, press and hold **Q / ↵.**

## Delete a station

While listening to IHEARTRADIO...

- 1 Press the volume knob to enter [FUNCTION].
- 2 Turn the volume knob to select [SYSTEM], then press the knob.
- 3 Turn the volume knob to select [STATION DEL], then press the knob.
- 4 Turn the volume knob to select [LIVE] or [CUSTOM], then press the knob.
- 5 Turn the volume knob to select the desired station to delete, then press the knob.
- 6 Turn the volume knob to select [YES], then press the knob.
- 7 Press and hold **Q / ↵** to exit.

To return to the previous setting item, press **Q / ↵.**

# AUDIO SETTINGS

While listening to any source...

- 1 Press the volume knob to enter [FUNCTION].
- 2 Turn the volume knob to select [AUDIO CONTROL], then press the knob.
- 3 Turn the volume knob to make a selection (see the following table), then press the knob.
- 4 Repeat step 3 until the desired item is selected or activated.
- 5 Press and hold **Q**/**↵** to exit.

(or using RC-406)

- 1 Press **AUD** to enter [AUDIO CONTROL].
- 2 Press **▲**/**▼** to make a selection, then press **ENT ▶ II**.

To return to the previous setting item, press **Q**/**↵**.

Default: **XX**

<b>SUB-W LEVEL</b>	<b>-15 to +15 (0)</b>	Adjusts the subwoofer output level.
<b>BASS LEVEL</b>	<b>-8 to +8 (+6)</b>	Adjusts the level to memorize for each source. (Before making an adjustment, select the source you want to adjust.)
<b>MID LEVEL</b>	<b>-8 to +8 (+5)</b>	
<b>TRE LEVEL</b>	<b>-8 to +8 (0)</b>	

## EQ PRO

<b>BASS ADJUST</b>	<b>BASS CTR FRQ</b>	<b>60/ 80/ 100/ 200</b> or <b>60HZ/ 80HZ/ 100HZ/ 200HZ</b> : Selects the center frequency.
	<b>BASS LEVEL</b>	<b>-8 to +8 (+6)</b> : Adjusts the level.
	<b>BASS Q FACTOR</b>	<b>1.00/ 1.25/ 1.50/ 2.00</b> : Adjusts the quality factor.
	<b>BASS EXTEND</b>	<b>ON</b> : Turns on the extended bass. ; <b>OFF</b> : Cancels.
<b>MID ADJUST</b>	<b>MID CTR FRQ</b>	<b>0.5K/ 1.0K/ 1.5K/ 2.5K</b> or <b>0.5KHZ/ 1.0KHZ/ 1.5KHZ/ 2.5KHZ</b> : Selects the center frequency.
	<b>MID LEVEL</b>	<b>-8 to +8 (+5)</b> : Adjusts the level.
	<b>MID Q FACTOR</b>	<b>0.75/ 1.00/ 1.25</b> : Adjusts the quality factor.
<b>TRE ADJUST</b>	<b>TRE CTR FRQ</b>	<b>10.0K/ 12.5K/ 15.0K/ 17.5K</b> or <b>10.0KHZ/ 12.5KHZ/ 15.0KHZ/ 17.5KHZ</b> : Selects the center frequency.
	<b>TRE LEVEL</b>	<b>-8 to +8 (0)</b> : Adjusts the level.

<b>PRESET EQ</b>	<b>DRIVE EQ/ TOP40/ POWERFUL/ ROCK/ POPS/ EASY/ JAZZ/ NATURAL/ USER</b> : Selects a preset equalizer suitable to the music genre. (Select [USER] to use the customized settings.) [DRIVE EQ] is a preset equalizer that reduces noise outside the car or running noise of the tyres.
<b>BASS BOOST</b>	<b>LV1/ LV2/ LV3</b> or <b>LEVEL1/ LEVEL2/ LEVEL3</b> : Selects your preferred bass boost level. ; <b>OFF</b> : Cancels.
<b>LOUDNESS</b>	<b>LV1/ LV2</b> or <b>LEVEL1/ LEVEL2</b> : Selects your preferred low and high frequencies boost to produce a well-balanced sound at a low volume level. ; <b>OFF</b> : Cancels.
<b>SUBWOOFER SET</b>	<b>ON</b> : Turns on the subwoofer output. ; <b>OFF</b> : Cancels.
<b>LPF SUBWOOFER</b>	<b>THROUGH</b> : All signals are sent to the subwoofer. ; <b>85HZ/ 120HZ/ 160HZ</b> : Audio signals with frequencies lower than 85 Hz/ 120 Hz/ 160 Hz are sent to the subwoofer.
<b>SUB-W PHASE</b>	<b>REVERSE (180°)</b> / <b>NORMAL (0°)</b> : Selects the phase of the subwoofer output to be in line with the speaker output for optimum performance. (Selectable only if a setting other than [THROUGH] is selected for [LPF SUBWOOFER].)
<b>FADER</b>	<b>R15 to F15 (0)</b> : Adjusts the rear and front speaker output balance.
<b>BALANCE</b>	<b>L15 to R15 (0)</b> : Adjusts the left and right speaker output balance.
<b>VOLUME OFFSET</b>	For AUX: <b>-8 to +8 (0)</b> ; For other sources: <b>-8 to 0</b> : Presets the volume adjustment level of each source. (Before adjustment, select the source you want to adjust.)
<b>SOUND RECNSTR</b> (Sound reconstruction)	<b>ON</b> : Creates realistic sound by compensating the high-frequency components and restoring the rise-time of the waveform that are lost in audio data compression. ; <b>OFF</b> : Cancels.

- [SUB-W LEVEL]/ [SUBWOOFER SET]/ [LPF SUBWOOFER]/ [SUB-W PHASE] is selectable only if [SWITCH PREOUT] is set to [SUB-W] or [SUBWOOFER]. (→ 4)
- [SUB-W LEVEL]/ [LPF SUBWOOFER]/ [SUB-W PHASE] is selectable only if [SUBWOOFER SET] is set to [ON].

# DISPLAY SETTINGS

- 1 Press the volume knob to enter [FUNCTION].
- 2 Turn the volume knob to select [DISPLAY], then press the knob.
- 3 Turn the volume knob to make a selection (see the following table), then press the knob.
- 4 Repeat step 3 until the desired item is selected/activated or follow the instructions stated on the selected item.
- 5 Press and hold **Q** / **↵** to exit.

To return to the previous setting item, press **Q** / **↵**.

Default: **XX**

<b>COLOR SELECT*1</b>	<p><b>VARIABLE SCAN/ CUSTOM R/G/B/</b> preset colors*2: Selects your preferred key and display illumination color.</p> <p>You can create your own color (when [CUSTOM R/G/B] or preset colors*2 is selected). The color you have created can be stored in [CUSTOM R/G/B].</p> <ol style="list-style-type: none"> <li>1 Press and hold the volume knob to enter the detailed color adjustment.</li> <li>2 Press <b>◀◀</b> / <b>▶▶</b> to select the color (R/ G/ B) to adjust.</li> <li>3 Turn the volume knob to adjust the level (0 — 9), then press the knob.</li> </ol>
<b>DIMMER</b>	<p><b>ON:</b> Dims the display illumination (and button illumination*1). ; <b>OFF:</b> Cancels.</p>
<b>BRIGHTNESS</b>	<p>0 — <b>31</b>: Selects your preferred brightness level for display illumination (and button illumination*1).</p>
<b>TEXT SCROLL</b>	<p><b>AUTO/ ONCE:</b> Selects whether to scroll the display information automatically, or scroll only once. ; <b>OFF:</b> Cancels.</p>

\*1 For **KDC-262U** / **KDC-MP262U**.

\*2 Preset colors: **RED1/ RED2/ RED3/ PURPLE1/ PURPLE2/ PURPLE3/ PURPLE4/ BLUE1/ BLUE2/ BLUE3/ SKYBLUE1/ SKYBLUE2/ LIGHTBLUE/ AQUA1/ AQUA2/ GREEN1/ GREEN2/ GREEN3/ YELLOWGREEN1/ YELLOWGREEN2/ YELLOW/ ORANGE1/ ORANGE2/ ORANGERED**

# TROUBLESHOOTING

Symptom	Remedy
General	Sound cannot be heard. <ul style="list-style-type: none"> <li>• Adjust the volume to the optimum level.</li> <li>• Check the cords and connections.</li> </ul>
	“MISWIRING CHECK WIRING THEN PWR ON” appears. <ul style="list-style-type: none"> <li>• Turn the power off, then check to be sure the terminals of the speaker wires are insulated properly. Turn the power on again.</li> </ul>
	“PROTECTING SEND SERVICE” appears. <ul style="list-style-type: none"> <li>• Send the unit to the nearest service center.</li> </ul>
	<ul style="list-style-type: none"> <li>• Sound cannot be heard.</li> <li>• The unit does not turn on.</li> <li>• Information shown on the display is incorrect.</li> </ul> Clean the connectors. (➔ 2)
Radio	The unit does not work at all. <ul style="list-style-type: none"> <li>• Reset the unit. (➔ 3)</li> </ul>
	<ul style="list-style-type: none"> <li>• Radio reception is poor.</li> <li>• Static noise while listening to the radio.</li> </ul> <ul style="list-style-type: none"> <li>• Connect the antenna firmly.</li> <li>• Pull the antenna out all the way.</li> </ul>
CD / USB / iPod	Disc cannot be ejected. <ul style="list-style-type: none"> <li>• Press and hold <b>▲</b> to forcibly eject the disc. Be careful not to drop the disc when it is ejected. If this does not solve the problem, reset the unit. (➔ 3)</li> </ul>
	Noise is generated. <ul style="list-style-type: none"> <li>• Skip to another track or change the disc.</li> </ul>
	Tracks do not play back as you intended them to play. <ul style="list-style-type: none"> <li>• Playback order is determined when files are recorded.</li> </ul>
	“READING” keeps flashing. <ul style="list-style-type: none"> <li>• Do not use too many hierarchical levels or folders.</li> </ul>
	Elapsed playing time is not correct. <ul style="list-style-type: none"> <li>• This is caused by how the tracks are recorded.</li> </ul>
	Correct characters are not displayed (e.g. album name). <ul style="list-style-type: none"> <li>• This unit can only display uppercase letters, numbers, and a limited number of symbols.</li> </ul>
	“NA FILE” <ul style="list-style-type: none"> <li>• Make sure the disc contains supported audio files. (➔ 14)</li> </ul>
“NO DISC” <ul style="list-style-type: none"> <li>• Insert a playable disc into the loading slot.</li> </ul>	
“TOC ERROR” <ul style="list-style-type: none"> <li>• Make sure the disc is clean and inserted properly.</li> </ul>	
“PLEASE EJECT” <ul style="list-style-type: none"> <li>• Reset the unit. If this does not solve the problem, consult your nearest service center.</li> </ul>	

## TROUBLESHOOTING

	Symptom	Remedy	
CD / USB / iPod	"READ ERROR"	Copy the files and folders onto the USB device again. If this does not solve the problem, reset the USB device or use another USB device.	
	"NO DEVICE"	Connect a USB device, and change the source to USB again.	
	"COPY PRO"	A copy-protected file is played.	
	"NA DEVICE"	Connect a supported USB device, and check the connections.	
	"NO MUSIC"	Connect a USB device that contains playable audio files.	
	"iPod ERROR"	<ul style="list-style-type: none"> <li>• Reconnect the iPod.</li> <li>• Reset the iPod.</li> </ul>	
ANDROID	<ul style="list-style-type: none"> <li>• Sound cannot be heard during playback.</li> <li>• Sound output only from the Android device.</li> </ul>	<ul style="list-style-type: none"> <li>• Reconnect the Android device.</li> <li>• If in [<b>HAND MODE</b>], launch any media player application on the Android device and start playback.</li> <li>• If in [<b>HAND MODE</b>], relaunch the current media player application or use another media player application.</li> <li>• Restart the Android device.</li> <li>• If this does not solve the problem, the connected Android device is unable to route the audio signal to unit. (➔ 14)</li> </ul>	
	Cannot playback at [ <b>BROWSE MODE</b> ].	<ul style="list-style-type: none"> <li>• Make sure KENWOOD MUSIC PLAY APP is installed on the Android device. (➔ 8)</li> <li>• Reconnect the Android device and make the appropriate setting in [<b>ANDROID SETUP</b>]. (➔ 8)</li> <li>• If this does not solve the problem, the connected Android device does not support [<b>BROWSE MODE</b>]. (➔ 14)</li> </ul>	
	"NO DEVICE" or "READING" keeps flashing.	<ul style="list-style-type: none"> <li>• Switch off the developer options on the Android device.</li> <li>• Reconnect the Android device.</li> <li>• If this does not solve the problem, the connected Android device does not support [<b>BROWSE MODE</b>]. (➔ 14)</li> </ul>	
	Playback is intermittent or sound skips.	Turn off the power saving mode on the Android device.	
	"ANDROID ERROR" / "NA DEVICE"	<ul style="list-style-type: none"> <li>• Reconnect the Android device.</li> <li>• Restart the Android device.</li> </ul>	

	Symptom	Remedy
Pandora	"ADD ERROR" / "SEARCH ERROR"	New station creation is unsuccessful.
	"CHECK DEVICE"	Check the Pandora application on your device.
	"NO SKIPS"	The skip limit has been reached.
	"NO STATIONS"	No stations are found.
	"STATION LIMIT"	The number of registered stations has reached its limit. Retry after deleting unnecessary stations from your device.
	"CONNECT ERROR"	Communication is unstable.
	"RATING ERROR"	Registration of thumbs up/thumbs down has failed.
	"LICENSE ERROR"	You try to access from a country which Pandora is not deliverable.
iHeartRadio	iHeartRadio station cannot be selected.	If "Explicit Content" in [Account Settings] is checked in the web version of iHeartRADIO, custom stations become unavailable.
	"CANNOT CREATE"	Custom station name creation is unsuccessful.
	"CANNOT SAVE"	Addition to the favorite category failed.
	"DISCONNECTED"	Check the connection to the device.
	"NO SKIPS"	The skip limit has been reached. Retry later.
	"NO STATIONS"	No stations are found.
	"NOT CONNECTED"	Link to the application is impossible.
	"IHEARTLINK UP"	Make sure you have installed the latest version of the iHeart Link for KENWOOD application on your device.
	"PLEASE LOGIN"	You haven't log in. Log in again.
	"STATION NOT AVAILABLE"	Broadcast from the station is over.
	"STATION NOT SELECTED"	No station is selected.
	"STREAM ERROR"	Broadcast data is interrupted.
	"THUMB FAILED"	Registration of Thumbs Up/Down has failed.
"TIMED OUT"	The request has resulted in time-out.	

# MORE INFORMATION

## General

- This unit can only play the following CDs:



- Detailed information and notes about the playable audio files are stated in an online manual on the following web site: [www.kenwood.com/cs/ce/audiofile/](http://www.kenwood.com/cs/ce/audiofile/)

## Playable files

- Playable audio file: MP3 (.mp3), WMA (.wma)
- Playable disc media: CD-R/CD-RW/CD-ROM
- Playable disc file format: ISO 9660 Level 1/2, Joliet, Long file name.
- Playable USB device file system: FAT12, FAT16, FAT32

Even when audio files comply with the standards listed above, playback may be impossible depending on the types or conditions of media or device.

## Unplayable discs

- Discs that are not round.
- Discs with coloring on the recording surface or discs that are dirty.
- Recordable/ReWritable discs that have not been finalized.
- 8 cm CD. Attempting to insert using an adapter may cause malfunction.

## About USB devices

- This unit can play MP3/WMA/WAV files stored on a USB mass storage class device.
- You cannot connect a USB device via a USB hub.
- Connecting a cable whose total length is longer than 5 m may result in abnormal playback.
- This unit cannot recognize a USB device whose rating is other than 5 V and exceeds 1 A.

## About KENWOOD Music Editor Light and KENWOOD Music Control

- This unit supports the PC application KENWOOD Music Editor Light and Android™ application KENWOOD Music Control.
- When you play audio files with song data added using the KENWOOD Music Editor Light or KENWOOD Music Control, you can search for audio files by Genres, Artists, Albums, Playlists, and Songs.
- KENWOOD Music Editor Light and KENWOOD Music Control are available on the following web site: [www.kenwood.com/cs/ce/](http://www.kenwood.com/cs/ce/)

## About iPod/iPhone

Made for

- iPod touch (2nd, 3rd, 4th, and 5th generation)
- iPod classic
- iPod nano (3rd, 4th, 5th, 6th, and 7th generation)
- iPhone 3G, 3GS, 4, 4S, 5, 5S, 5C
- For the latest compatible list and software versions of iPhone/iPod, see: [www.kenwood.com/cs/ce/ipod](http://www.kenwood.com/cs/ce/ipod)
- You cannot operate iPod if “KENWOOD” or “✓” is displayed on iPod.

## About Android device

- This unit supports Android OS 4.1 and above.
- Some Android devices (with OS 4.1 and above) may not fully support Android Open Accessory (AOA) 2.0.
- If the Android device supports both mass storage class device and AOA 2.0, this unit always playback via AOA 2.0 as priority.
- For more information and the latest compatible list, see: [www.kenwood.com/cs/ce/](http://www.kenwood.com/cs/ce/)

## About Pandora

- Pandora is available only in the U.S., Australia and New Zealand.
- Because Pandora is a third-party service, the specifications are subject to change without prior notice. Accordingly, compatibility may be impaired, or some or all of the services may become unavailable.
- Some functions of Pandora cannot be operated from this unit.
- For issues using the application, please contact Pandora at [pandora-support@pandora.com](mailto:pandora-support@pandora.com).

## About iHeartRadio

- iHeartRadio® is a third-party service, therefore the specifications are subject to change without prior notice. Accordingly, compatibility may be impaired or some or all of the services may become unavailable.
- Some iHeartRadio® functionality cannot be operated from this unit.

## Muting upon the reception of a phone call

Connect the MUTE wire to your telephone using a commercial telephone accessory. (➔ 17)

**When a call comes in, “CALL” appears.** (The audio system pauses.)

- To continue listening to the audio system during a call, press **⏻ SRC**. “CALL” disappears and the audio system resumes.

**When the call ends, “CALL” disappears.** (The audio system resumes.)



# SPECIFICATIONS

Tuner	FM Frequency Range	<b>KDC-262U</b> / <b>KDC-162U</b> / <b>KDC-122U</b> / <b>KDC-220U</b> : 87.9 MHz — 107.9 MHz (200 kHz space) <b>KDC-MP262U</b> / <b>KDC-MP162U</b> : 87.5 MHz — 108.0 MHz (50 kHz space)
	Usable Sensitivity (S/N = 26 dB)	8.2 dBf (0.71 $\mu$ V/75 $\Omega$ )
	Quieting Sensitivity (DIN S/N = 46 dB)	17.2 dBf (2.0 $\mu$ V/75 $\Omega$ )
	Frequency Response ( $\pm 3$ dB)	30 Hz — 15 kHz
	Signal-to-Noise Ratio (MONO)	64 dB
	Stereo Separation (1 kHz)	40 dB
	AM Frequency Range	530 kHz — 1 700 kHz (10 kHz space)
Usable Sensitivity (S/N = 20 dB)	29 dB $\mu$ (28.2 $\mu$ V)	

CD player	Laser Diode	GaAlAs
	Digital Filter (D/A)	8 times over sampling
	Spindle Speed	500 rpm — 200 rpm (CLV)
	Wow & Flutter	Below measurable limit
	Frequency Response ( $\pm 1$ dB)	20 Hz — 20 kHz
	Total Harmonic Distortion (1 kHz)	0.01 %
	Signal-to-Noise Ratio (1 kHz)	105 dB
	Dynamic Range	90 dB
	Channel Separation	85 dB
	MP3 Decode	Compliant with MPEG-1/2 Audio Layer-3
WMA Decode	Compliant with Windows Media Audio	

USB	USB Standard	USB 1.1, USB 2.0
	File System	FAT12/ 16/ 32
	Maximum Supply Current	DC 5 V $\equiv$ 1 A
	MP3 Decode	Compliant with MPEG-1/2 Audio Layer-3
	WMA Decode	Compliant with Windows Media Audio
WAV Decode	Linear-PCM	

Audio	Maximum Output Power	50 W $\times$ 4	
	Full Bandwidth Power	22 W $\times$ 4 (at less than 1 % THD)	
	Speaker Impedance	4 $\Omega$ — 8 $\Omega$	
	Tone Action	Bass	200 Hz $\pm 8$ dB
		Middle	2.5 kHz $\pm 8$ dB
		Treble	12.5 kHz $\pm 8$ dB
	Preout Level/Load (CD)	2 500 mV/10 k $\Omega$	
Preout Impedance	$\leq$ 600 $\Omega$		

Auxiliary	Frequency Response ( $\pm 3$ dB)	20 Hz — 20 kHz
	Input Maximum Voltage	1 000 mV
	Input Impedance	30 k $\Omega$

General	Operating Voltage	14.4 V (10.5 V — 16 V allowable)
	Maximum Current Consumption	10 A
	Operational Temperature Range	0 $^{\circ}$ C — +40 $^{\circ}$ C
	Installation Size (W $\times$ H $\times$ D)	182 mm $\times$ 53 mm $\times$ 159 mm (7-3/16" $\times$ 2-1/16" $\times$ 6-1/4")
	Weight	1.2 kg (2.65 lbs)

Subject to change without notice.



## ▲ Warning

- The unit can only be used with a 12 V DC power supply, negative ground.
- Disconnect the battery's negative terminal before wiring and mounting.
- Do not connect Battery wire (yellow) and Ignition wire (red) to the car chassis or Ground wire (black) to prevent a short circuit.
- Insulate unconnected wires with vinyl tape to prevent a short circuit.
- Be sure to ground this unit to the car's chassis again after installation.

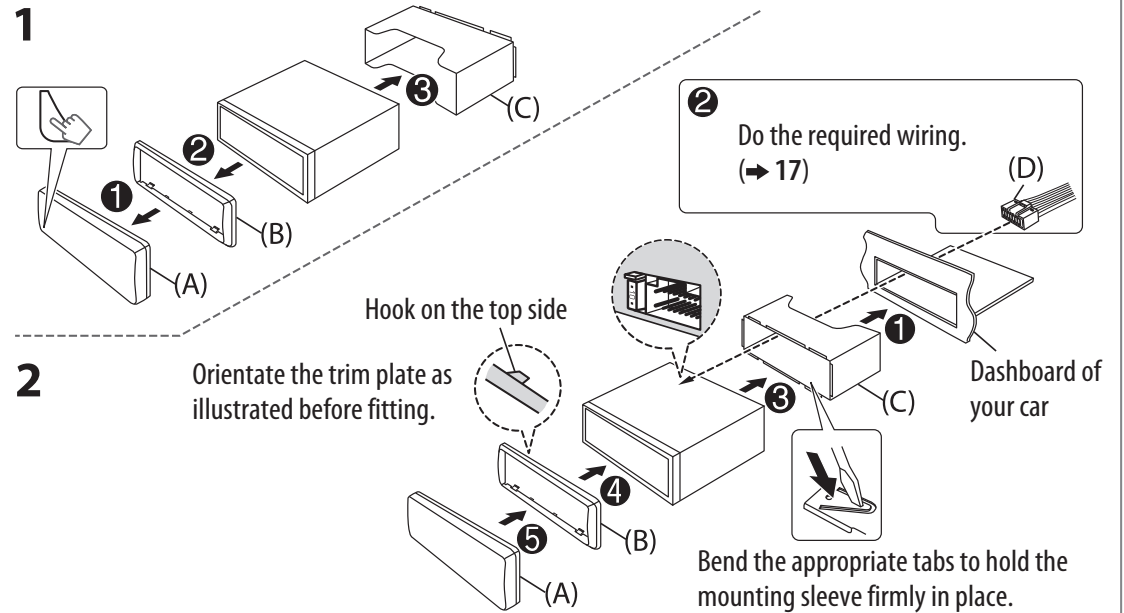
## ▲ Caution

- For safety's sake, leave wiring and mounting to professionals. Consult the car audio dealer.
- Install this unit in the console of your vehicle. Do not touch the metal parts of this unit during and shortly after use of the unit. Metal parts such as the heat sink and enclosure become hot.
- Do not connect the ⊖ wires of speakers to the car chassis or Ground wire (black), or connect them in parallel.
- Mount the unit at an angle of less than 30°.
- If your vehicle wiring harness does not have the ignition terminal, connect Ignition wire (red) to the terminal on the vehicle's fuse box which provides 12 V DC power supply and is turned on and off by the ignition key.
- Keep all cables away from heat dissipate metal parts.
- After the unit is installed, check whether the brake lamps, blinkers, wipers, etc. on the car are working properly.
- If the fuse blows, first make sure the wires are not touching car's chassis, then replace the old fuse with one that has the same rating.

## Basic procedure

- 1 Remove the key from the ignition switch, then disconnect the ⊖ terminal of the car battery.
- 2 Connect the wires properly.  
See Wiring connection. (→ 17)
- 3 Install the unit to your car.  
See Installing the unit (in-dash mounting).
- 4 Connect the ⊖ terminal of the car battery.
- 5 Reset the unit. (→ 3)

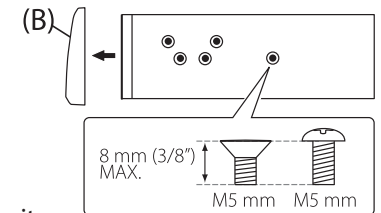
## Installing the unit (in-dash mounting)



## When installing without the mounting sleeve

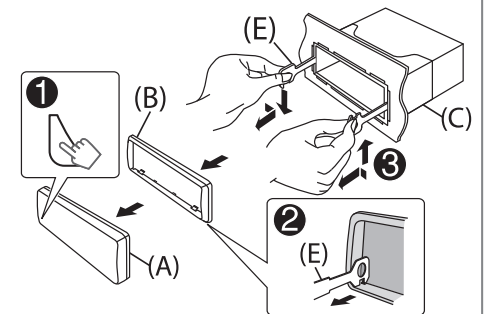
- 1 Remove the mounting sleeve and trim plate from the unit.
- 2 Align the holes in the unit (on both sides) with the vehicle mounting bracket and secure the unit with screws (commercially available).

▲ Use only the specified screws. Using wrong screws might damage the unit.

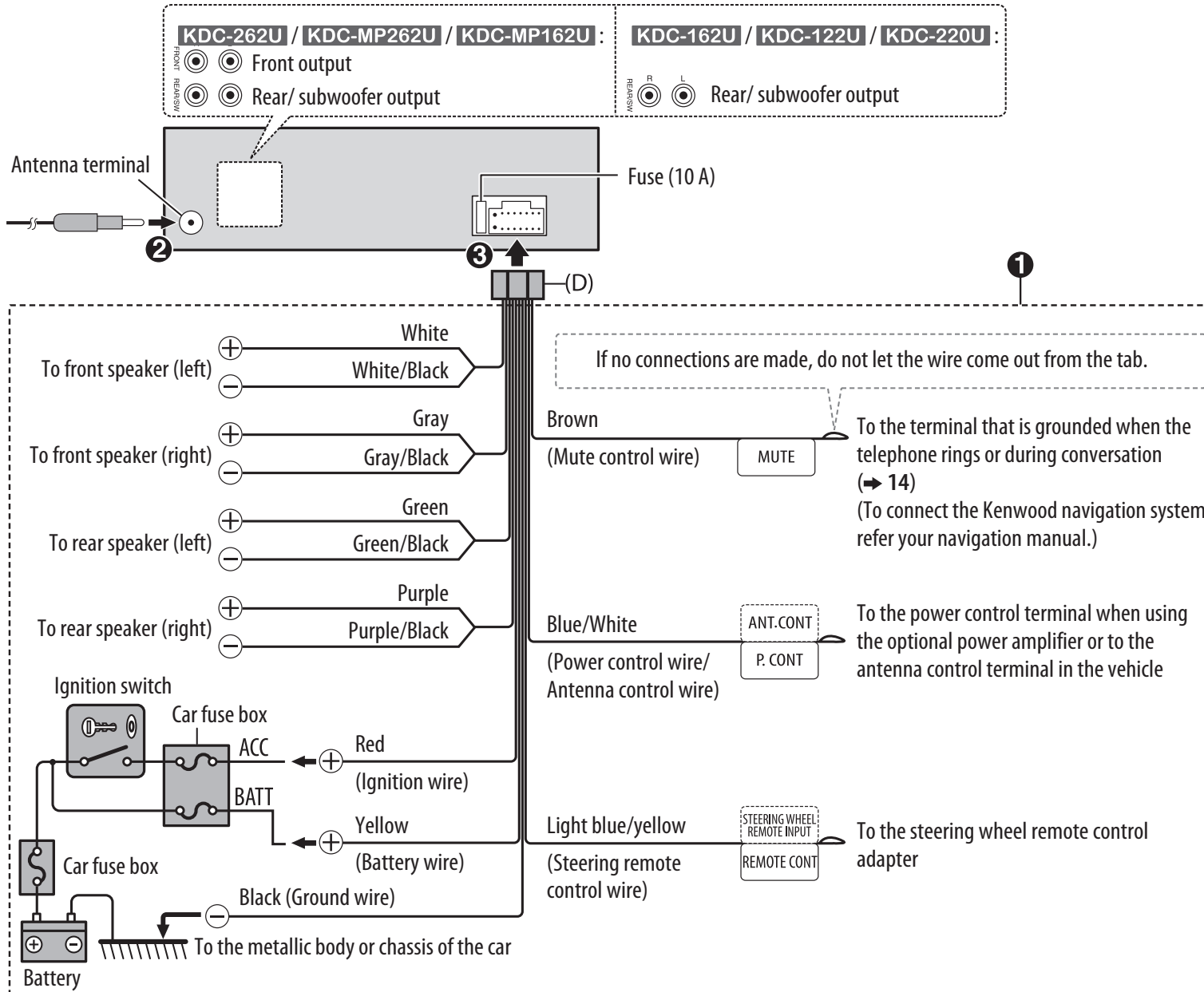


## How to remove the unit

- 1 Detach the faceplate.
- 2 Fit the catch pin on the extraction keys into the holes on both sides of the trim plate, then pull it out.
- 3 Insert the extraction keys deeply into the slots on each side, then follow the arrows as shown on the right.

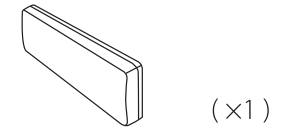


## Wiring connection

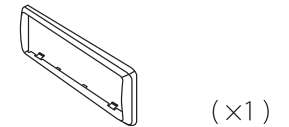


## Part list for installation

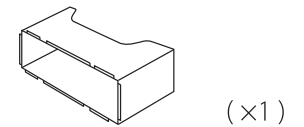
### (A) Faceplate



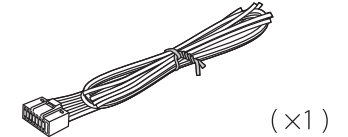
### (B) Trim plate



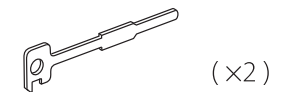
### (C) Mounting sleeve



### (D) Wiring harness



### (E) Extraction key



**CAUTION**

Use of controls or adjustments or performance of procedures other than those specified herein may result in hazardous radiation exposure.

In compliance with Federal Regulations, following are reproductions of labels on, or inside the product relating to laser product safety.

JVC KENWOOD Corporation  
2967-3, ISHIKAWA-MACHI,  
HACHIOJI-SHI, TOKYO, JAPAN

THIS PRODUCT COMPLIES WITH DHHS RULES 21CFR  
SUBCHAPTER J IN EFFECT AT DATE OF MANUFACTURE.

Location : Top Plate

**FCC WARNING**

This equipment may generate or use radio frequency energy. Changes or modifications to this equipment may cause harmful interference unless the modifications are expressly approved in the instruction manual. The user could lose the authority to operate this equipment if an unauthorized change or modification is made.

**FCC NOTE**

This equipment has been tested and found to comply with the limits for a Class B digital device, pursuant to Part 15 of the FCC Rules. These limits are designed to provide reasonable protection against harmful interference in a residential installation. This equipment may cause harmful interference to radio communications, if it is not installed and used in accordance with the instructions. However, there is no guarantee that interference will not occur in a particular installation. If this equipment does cause harmful interference to radio or television reception, which can be determined by turning the equipment off and on, the user is encouraged to try to correct the interference by one or more of the following measures:

- Reorient or relocate the receiving antenna.
- Increase the separation between the equipment and receiver.
- Connect the equipment into an outlet on a circuit different from that to which the receiver is connected.
- Consult the dealer or an experienced radio/TV technician for help.

**CALIFORNIA, USA ONLY**

This product contains a CR Coin Cell Lithium Battery which contains Perchlorate Material—special handling may apply. See [www.dtsc.ca.gov/hazardouswaste/perchlorate](http://www.dtsc.ca.gov/hazardouswaste/perchlorate)

- “Made for iPod,” and “Made for iPhone” mean that an electronic accessory has been designed to connect specifically to iPod, or iPhone, respectively, and has been certified by the developer to meet Apple performance standards. Apple is not responsible for the operation of this device or its compliance with safety and regulatory standards. Please note that the use of this accessory with iPod or iPhone may affect wireless performance.
- iPhone, iPod, iPod classic, iPod nano, and iPod touch are trademarks of Apple Inc., registered in the U.S. and other countries.
- Lightning is a trademark of Apple Inc.
- Pandora, the Pandora logo, and the Pandora trade dress are trademarks or registered trademarks of Pandora Media, Inc., used with permission.
- iHeartRadio® is a registered mark of Clear Channel Broadcasting, Inc. in the United States and other countries. Such marks are used under license.
- Android is trademark of Google Inc.

**Información acerca de la eliminación de equipos eléctricos y electrónicos al final de la vida útil (aplicable a los países que hayan adoptado sistemas independientes de recogida de residuos)**


Los productos con el símbolo de un contenedor con ruedas tachado no podrán ser desechados como residuos domésticos. Los equipos eléctricos y electrónicos al final de la vida útil, deberán ser reciclados en instalaciones que puedan dar el tratamiento adecuado a estos productos y a sus subproductos residuales correspondientes. Póngase en contacto con su administración local para obtener información sobre el punto de recogida más cercano. Un tratamiento correcto del reciclaje y la eliminación de residuos ayuda a conservar los recursos y evita al mismo tiempo efectos perjudiciales en la salud y el medio ambiente.

**Informação sobre a eliminação de pilhas**

Este produto não deve ser eliminado como lixo doméstico geral. Devolva a pilha usada ao revendedor ou entidade autorizada para que a mesma seja devolvida ao fabricante ou importador. A reciclagem e a eliminação de lixo de maneira apropriada ajudarão a conservar os recursos naturais ao mesmo tempo que prevenirão os efeitos prejudiciais à nossa saúde e ao meio ambiente.

## MILITARY

Units purchased through the U.S.A. military exchange service overseas may be serviced under warranty in the continental U.S.A., subject to the following conditions.

- 1) The original warranty is in effect.
- 2) Proof of purchase is provided to the servicer.

### WARRANTY FOR MILITARY MARKET

Kenwood corporation is proud of the quality and workmanship of its audio equipment. This unit has been properly designed, tested and inspected before it was shipped to you. If properly installed and operated in accordance with instructions furnished, it should give you an optimum reliable performance.

### WARRANTY PERIOD

This product is warranted for a period of (1) year from the date of the original purchase.

### SCOPE OF WARRANTY

Except as specified below, this warranty covers all defects in materials and workmanship of the Kenwood brand products.

During the warranty period, any authorized Kenwood Service Center in the military market listed in the back of this warranty card will provide you free-of-charge both parts and labor required to correct any defect in materials or workmanship.

The following are not covered by this warranty.

1. Voltage conversions.
2. Periodic check-ups which do not disclose any defect covered by the warranty.
3. Cabinets, grilles, other exterior finishes, belts, tape heads, and other non-durable parts and accessories.
4. Units on which the serial number has been effaced, modified or removed.
5. Installation and/or removal charges.
6. Damaged magnetic tapes.
7. House call charges for any repairs.
8. Shipping or delivery charges to or from an authorized Kenwood Service Center.
9. This warranty will not cover any failure that is due to any of the following conditions in accordance with the visual inspection of the authorized Kenwood Service Center:

\* Improper maintenance or repair, including the installation of parts or accessories that do not conform to the quality and specifications of the original parts.

\* Misuse, abuse, neglect, unauthorized product modification or failure to follow instructions contained in the Owner's Manual.

\* Accidental or intentional damages.

\* Repairs or attempted repairs by an unauthorized agency. (All repairs must be performed at an authorized Kenwood Service Center.)

\* Damages or deteriorations caused during shipment (Claims must be presented to the carrier).

\* Damages or deteriorations resulting from removal and/or replacement.

### PURCHASER'S RESPONSIBILITIES

As the purchaser of a new Kenwood brand product, you are requested to do the following in order to obtain Kenwood warranty service.

1. Retain your sales slip or other evidence of purchase for proving your eligibility for requesting Kenwood warranty service.
2. Make your unit available to an authorized Kenwood Service Center in the military market for inspection and approved warranty service, or ship your unit in its original carton box or equivalent, fully insured and shipping charges prepaid, to the authorized Kenwood Service Center.

### LIMITATION OF IMPLIED WARRANTIES

Any and all implied warranties, including warranties of merchantability and fitness for a particular purpose, shall be limited in duration to the length of this warranty.

### EXCLUSION OF CERTAIN DAMAGES

KENWOOD's liability for any defective product is limited to the repair or replacement of said product, at our option, and shall not include damages of any kind, whether incidental, consequential or otherwise, except to the extent prohibited by applicable law.

### KENWOOD AUTHORIZED SERVICE CENTERS IN MILITARY MARKET

#### JAPAN:

##### Yokota

Kenwood Rep., c/o  
Yokota BX, JAAX AAFES-PAC,  
APO San Francisco 96328

##### Zama

Kenwood Rep., c/o  
Zama PX, JAAX AAFES-PAC,  
APO San Francisco 96343

##### Misawa

Kenwood Rep., c/o  
Misawa BX, JAAX AAFES-PAC,  
APO San Francisco 96519

##### Yokosuka

Kenwood Rep., c/o  
A-33, Yokosuka NEX No. 260-010  
FPO Seattle 98760

##### Atsugi

Kenwood Rep., c/o  
Atsugi NEX No. 260-020 FPO Seattle  
98767

##### Iwakuni

Kenwood Rep., c/o  
Marine Corps Exchange, Marine Corps  
Air Station,  
FPO Seattle 98764

##### Sasebo

Sasebo NEX;  
Navy Exchange 260-040  
F.A. Box 115 FPO Seattle 98766

##### Okinawa

Kenwood Rep., c/o  
OWAX, AAFES-PAC, APO San Francisco  
96230

#### KOREA:

Kenwood Rep., c/o  
KOAX Repair Shop, AAFES-PAC  
DD-Camp Market, APO San Francisco  
96488

#### GUAM:

Kenwood Rep., c/o  
Guam NEX No. 230-010,  
FPO San Francisco 96630  
Kenwood Rep., c/o  
GUAX, AAFES-PAC, APO San Francisco  
96334

#### U.S.A.:

##### Hawaii

Kenwood Factory Service  
99-994 Iwaena St., Aiea, Hawaii 96701

##### Alaska

Vista Radio TV,  
861 East Loop Road, Anchorage, Alaska  
99501  
Anchorage Commercial Electronics, Inc.,  
1450 East 9th Ave., Anchorage, Alaska  
99501

##### In The Continental U.S.A.

For Nearest Authorized Service Center,  
Tel: 1-800-536-9663

##### Kenwood Service U.S.A.

Kenwood Factory Service;  
P.O. Box 22745, 2201 East Dominguez  
Street,  
Long Beach, California 90801-5745  
Tel: (310) 639-5300

##### EUROPE:

Please inquire at the military resale  
outlets where you bought your Kenwood  
products, or  
KENWOOD ELECTRONICS  
DEUTSCHLAND GMBH:  
Rembrücker-Str. 15, 63150 Heusenstamm,  
Germany  
Tel.: 49-06104-69010

# KENWOOD

# Warranty Card

Identification du produit  
Modelo do aparelho e numero de série  
Model number & serial number

Revendeur & cachet  
Nome da loja e carimbo  
Dealer & stamp

Date d'achat  
Data da compra  
Purchase date

Nom & adresse du client  
Nome e endereço do cliente  
Name & address of customer

### Attention:

This card and receipt (or invoice) are necessary to purchase a new panel in case of theft or damage.

### Attention:

Vous aurez besoin de cette carte et du reçu (ou de la facture) pour acheter un nouveau panneau en cas de vol ou d'endommagement.

### Atenção:

Em caso de dano ou perda do painel frontal, este Certificado de Garantia e a Nota Fiscal de compra serão requisitados para a aquisição de um novo painel.

© B46-0824-00/01 (K) (12/07)

Dear Customer,

Thank you for purchasing this Kenwood product. As mentioned in the pages of this booklet, our warranty is only valid in the countries listed. If your country is not listed please contact your retailer for information on warranty procedure, or write to:

### JVC KENWOOD Customer Information Center

3-12, Moriyacho, Kanagawa-ku, Yokohama-shi, Kanagawa 221-0022, Japan



U.S.A.	KENWOOD USA CORPORATION
<p>This warranty will be honored only in the U.S.A.</p>	
<p><b>WHO IS PROTECTED</b> This warranty is enforceable only by the original purchaser.</p>	
<p><b>WHAT WE WILL PAY FOR</b> We will pay for all labor and material expenses for covered items. Payment of shipping charges is discussed in the next section of this warranty.</p>	
<p><b>HOW TO OBTAIN WARRANTY SERVICE</b> If your KENWOOD product ever needs service: 1. Take or ship it to any KENWOOD Authorized Service Center in the U.S.A. along with a complete description of the problem. (If you are uncertain as to whether a Service Center is authorized, please call 1-800-KENWOOD for the nearest Service Center. 1-800-536-9663). 2. Although you must pay any shipping charges if it is necessary to ship the product for warranty service, we will pay the return shipping charges if the repairs are covered by the warranty within the United States. 3. Whenever your units are taken or sent for warranty service, you must include a copy of the original dated sales receipt as proof of warranty coverage.</p>	
<p><b>LIMITATION OF IMPLIED WARRANTIES</b> ALL IMPLIED WARRANTIES, INCLUDING WARRANTIES OF MERCHANTABILITY AND FITNESS FOR A PARTICULAR PURPOSE, ARE LIMITED IN DURATION TO THE LENGTH OF THIS WARRANTY.</p>	
<p><b>KENWOOD USA CORPORATION</b> <b>P.O. Box 22745, 2201 East Dominguez Street, Long Beach, CA 90801-5745</b> <b>Tel: (310) 639-5300</b></p>	
<p><b>EXCLUSION OF DAMAGES</b> KENWOOD'S LIABILITY FOR ANY DEFECTIVE PRODUCT IS LIMITED TO THE REPAIR OR REPLACEMENT OF THE PRODUCT AT OUR OPTION. KENWOOD SHALL NOT BE LIABLE FOR: 1. INSTALLATION OR REMOVAL CHARGES, DAMAGE TO OTHER PROPERTY CAUSED BY ANY DEFECTS IN KENWOOD CAR STEREO COMPONENTS, DAMAGES BASED UPON INCONVENIENCE, LOSS OF USE OF THE PRODUCT; OR 2. ANY OTHER DAMAGES, WHETHER INCIDENTAL, CONSEQUENTIAL OR OTHERWISE. SOME STATES DO NOT ALLOW LIMITATIONS ON HOW LONG AN IMPLIED WARRANTY LASTS AND/OR DO NOT ALLOW THE EXCLUSION OR LIMITATION OF INCIDENTAL OR CONSEQUENTIAL DAMAGES, SO THE ABOVE LIMITATIONS AND EXCLUSIONS MAY NOT APPLY TO YOU.</p>	
<p>This warranty gives you specific legal rights, and you may also have other rights which vary from state to state.</p>	
<p>If a problem develops during or after the Limited Warranty Period, or if you have any questions regarding the operation of the product, you should contact your KENWOOD Authorized Dealer or Authorized Service Center. If the problem or your question is not handled to your satisfaction, please contact our Customer Relations Department at the address listed below:</p>	

BRASIL	JVC KENWOOD DO BRASIL COMÉRCIO DE ELETRÔNICOS LTDA
<p>O fabricante garante o produto identificado na Nota Fiscal de venda ao consumidor contra qualquer defeito de fabricação ou de matéria-prima durante o período de garantia. Esta garantia é válida no território brasileiro desde que o produto tenha sido adquirido no Brasil e distribuído pela JVC KENWOOD do Brasil Comércio de Eletrônicos Ltda.</p>	
<p><b>PERÍODO DE GARANTIA</b></p>	
<p>Este produto é garantido pelo prazo de 01 (um) ano, incluindo o período estabelecido por lei, a partir da data de aquisição, comprovada mediante a apresentação da respectiva Nota Fiscal de venda ao consumidor final. Eventuais reparos realizados no produto durante o período de garantia não implicam na dilatação do seu prazo.</p>	
<p><b>EXCLUSÃO DA GARANTIA</b></p>	
<p>(a) Produtos com o número de série ou certificado de garantia rasurados, adulterados ou ilegíveis; (b) Defeitos resultantes de acidentes (quedas, batidas e etc), uso em desacordo com o manual de instruções, má utilização, ligação à fonte de tensão diferente da especificada no Manual de Instruções, modificações não autorizadas; (c) Danos causados por agentes da natureza (Ex: chuvas, raios, maresia, enchentes e etc); (d) Defeitos ou danos em decorrência de consertos realizados por pessoas não autorizadas; (e) Defeitos ou danos resultantes do uso de peças ou dispositivos não conformes às especificações da JVC KENWOOD; (f) Danos ou deteriorações aos acabamentos externos, partes cosméticas, cabos, chicotes, parafusos de direção, luvas, alças, bolsas, estojos, adaptadores, antenas, fitas, cabeças gravadoras, CDs ou danos causados por pilhas defeituosas ou com vazamento; (g) Defeitos ou danos devido ao transporte (reclamações devem ser feitas junto à empresa transportadora); (h) Qualquer outra causa que não esteja relacionada a defeitos de matéria-prima e de fabricação; (i) Danos causados por tentativa de roubo ou furto; (j) Danos causados por uso de CDs de má qualidade; (k) Danos decorrentes do desgaste natural do produto; (l) Danos causados por mau uso, (derramamento de líquidos e/ou alimentos, corrosão, oxidação, exposição à umidade ou situações climáticas extremas, riscos ou quedas).</p>	
<p><b>CONCERTO EM GARANTIA</b></p>	
<p>É indispensável a apresentação deste Certificado de Garantia devidamente preenchido, acompanhado da respectiva Nota Fiscal de compra do produto, desde que não apresente rasuras ou modificações. O consumidor somente terá direito a estes benefícios, quando o produto for entregue diretamente no balcão de um Serviço Autorizado da JVC KENWOOD.</p>	
<p><b>O QUE NÃO É COBERTO PELA GARANTIA</b></p>	
<p>Instalação e remoção do produto, despesas de frete, seguro e embalagem são de responsabilidade do proprietário.</p>	
<p>Este produto é destinado exclusivamente ao uso doméstico.</p>	
<p><b>IMPORTANTE:</b></p>	
<p>Para qualquer informação sobre seu equipamento JVC KENWOOD, ou para obter o endereço do Serviço Autorizado mais próximo, acesse o site <a href="http://www.kenwood.com.br">www.kenwood.com.br</a>, ou ligue para a Central de Atendimento JVC KENWOOD – Tel.: +55 (11) 3777-6771 com os dados abaixo preenchidos.</p>	
<p><b>JVC KENWOOD DO BRASIL COMÉRCIO DE ELETRÔNICOS LTDA</b> <b>Tel: (11) 3777-6771</b> <b><a href="http://www.kenwood.com.br">www.kenwood.com.br</a></b></p>	
<p>Nome do consumidor: _____</p>	
<p>Endereço: _____ CEP: _____</p>	
<p>Cidade: _____ Estado: _____</p>	
<p>Telefone: _____</p>	
<p>Data da compra: ____/____/____ Nota Fiscal: _____</p>	

CANADA	KENWOOD ELECTRONICS CANADA INC.
<p><b>KENWOOD WARRANTY</b> KENWOOD ELECTRONICS CANADA INC. (hereinafter called "KENWOOD"), gives the following written warranty to the original customer of each new Kenwood product distributed in Canada by KENWOOD and purchased from a dealer authorized by KENWOOD.</p>	
<p>KENWOOD warrants that each new Kenwood product, under normal use, is free from any defects, subject to the terms and conditions set forth below. If a defect should occur within the warranty period, repairs will be made free of charge for parts and labour when such defects are determined by KENWOOD or its authorized service centres to be attributable to faulty materials or workmanship at time of manufacture. Please contact KENWOOD to confirm if a dealer or service centre is authorized by KENWOOD.</p>	
<p><b>WARRANTY PERIOD</b></p>	
<p>This Kenwood product is warranted for parts and labour for the entire one (1) year from the date of original purchase, lease or rental, except for products which are used in a professional or commercial application, which are warranted for a period of ninety (90) days for parts and labour and are subject to the terms and conditions of the warranty.</p>	
<p><b>WARRANTY EXCLUSIONS</b></p>	
<p>This warranty excludes: (a) Products purchased in a foreign country or purchased in Canada and taken to a foreign country. (b) Products purchased from a dealer not authorized by KENWOOD. (c) Products with the serial number defaced, altered or missing. (d) Periodic check-ups which do not disclose any defects covered by this warranty.</p>	
<p><b>TO OBTAIN WARRANTY SERVICE</b></p>	
<p>Should your Kenwood product require warranty service, deliver it to any authorized KENWOOD service centre and present the original copy of your bill of sale and this warranty card as proof of warranty, or send your product fully insured and freight prepaid to the nearest authorized KENWOOD service centre. To avoid possible shipping damage, make sure the product is properly packed. Include a copy of your original bill of sale and this warranty card as proof of warranty along with your name, home and /or work telephone number(s), a complete return address and a detailed description of the fault(s). Products repaired within warranty will be returned freight prepaid to destinations within Canada. The customer is responsible for all freight and related costs for the return of product(s) to destinations outside Canada.</p>	
<p>(e) Defects resulting from disaster, accident, abuse, misuse, lightning, power surges, neglect or lack of periodic maintenance, unauthorized modification or failure to follow instructions in the owner's manual. (f) Defects or damage as a result of repairs performed by a person or party not authorized by KENWOOD. (g) Defects resulting from the use of parts or devices that do not conform to KENWOOD specifications. (h) Damage or deterioration occurring to any exterior finishes, cosmetic parts, tape heads, adaptors, antennas, cables, tapes, discs or faults or damage caused by defective or leaking batteries. (i) Defects or damage occurring during shipping (claims should be presented to the shipping company). (j) Product voltage and /or line frequency conversions. (k) Product installation or removal charges.</p>	
<p><b>ENTIRE WARRANTY</b></p>	
<p>This warranty constitutes the entire written warranty given by KENWOOD. No person, party, dealer or service centre or their agents or employees are authorized to extend or enlarge this warranty on behalf of KENWOOD by any written or verbal statement or advertisement or promotion, including any extended warranty program or plan that may be offered by the dealer or service centre, unless approved in writing by KENWOOD.</p>	
<p><b>DISCLAIMER</b></p>	
<p>KENWOOD disclaims any responsibility for loss of time or use of the product or any other indirect, incidental or consequential damage to other products or goods, inconvenience or commercial loss.</p>	
<p><b>NOTICE TO CONSUMER</b></p>	
<p>The provisions contained in this written warranty are not intended to limit, modify, take away, disclaim or exclude any warranties or rights you may have which are set forth in any applicable provincial or federal laws or legislation.</p>	
<p><b>IMPORTANT</b></p>	
<p>This warranty card by itself is not considered by KENWOOD as a valid proof of purchase. When applying for warranty repairs, you must present the original copy of your bill of sale and this warranty card as proof of warranty, so we recommend that they be kept in a safe place, should they be required in the future.</p>	
<p><b>KENWOOD ELECTRONICS CANADA INC.</b> <b>6070 Kestrel Road, Mississauga, Ontario, Canada L5T 1S8</b> <b>Tel.: (905) 670-7211</b> <b>Fax: (905) 670-7248</b></p>	

<p><b>GARANTIE KENWOOD</b> KENWOOD ELECTRONICS CANADA INC. (ci-après appelée "KENWOOD"), donne par écrit la garantie suivante à l'acheteur original de chaque nouveau produit Kenwood distribué au Canada par KENWOOD et acheté à un concessionnaire autorisé par KENWOOD.</p> <p>KENWOOD garantit, sous réserve des termes et des conditions énoncés ci-dessous, que chaque nouveau produit Kenwood, dans des conditions d'emploi normales, est exempt de tous défauts. Si l'un des défauts se produit pendant la période de garantie, KENWOOD s'engage à assumer le coût des pièces défectueuses et de la main-d'œuvre nécessaires pour effectuer les réparations pourvu que de tels défauts sont attribuables à des pièces défectueuses employées lors de la fabrication du produit Kenwood ou à la main-d'œuvre tel qu'établi par KENWOOD ou par l'un de ses centres de service autorisés. Appelez KENWOOD pour vérifier si un concessionnaire ou un centre de service est autorisé par KENWOOD.</p> <p><b>PÉRIODE DE GARANTIE</b></p> <p>Les pièces et la main-d'œuvre nécessaires pour la réparation des produits Kenwood sont garanties pendant la période d'un (1) an à compter de la date d'achat, de bail ou de location originale, sauf dans les cas où les produits Kenwood sont employés dans un but professionnel ou commercial, où la garantie des pièces et de la main-d'œuvre demeure en vigueur pendant une période de quatre-vingt-dix (90) jours sous réserve des termes et des conditions de la garantie.</p> <p><b>EXCLUSIONS DE GARANTIE</b></p> <p>Cette garantie ne couvre pas: (a) les produits achetés à l'étranger ou achetés au Canada et transportés à l'étranger, (b) les produits achetés à un concessionnaire non autorisé par KENWOOD; (c) les produits dont le numéro de série manque, a été effacé ou modifié; (d) les services d'entretien périodiques qui n'indiquent aucun défaut couvert par cette garantie;</p>	<p>(e) les défauts causés par les désastres, les accidents, les abus, les emplois incorrects, les éclairs, les surtensions de courant, les manques de soins ou d'entretiens périodiques, les modifications non autorisées ou les manques de respect du mode d'emploi; (f) les défauts ou les dommages causés lors de réparations effectuées par une personne ou par une partie non autorisée par KENWOOD; (g) les défauts causés par l'emploi de pièces ou de dispositifs qui ne se conforment pas aux exigences de KENWOOD; (h) les finitions extérieures, les pièces cosmétiques, les têtes de bandes, les adaptateurs, les antennes, les câbles, les bandes, les disques endommagés ou déprés, ni les défauts ou dommages causés par des piles défectueuses ou qui fuient; (i) les défauts ou dommages qui se produisent pendant l'expédition des produits Kenwood (On devrait déposer de telles réclamations auprès des compagnies de transport); (j) les conversions de tension et/ou de fréquence du produit; (k) les frais d'installation ou d'enlèvement du produit.</p> <p><b>COMMENT OBTENIR DU SERVICE SOUS GARANTIE</b></p> <p>Au cas où un service sous garantie de votre produit Kenwood s'avère nécessaire, veuillez livrer le produit à n'importe quel centre de service KENWOOD et présenter la copie originale du contrat de vente et cette carte de garantie en tant que preuve de garantie ou veuillez faire parvenir votre produit assuré et port payé au centre de service KENWOOD autorisé le plus proche. Pour éviter toutes possibilités de dommages pendant le transport, veuillez bien emballer le produit. Veuillez inclure une copie du contrat de vente original et cette carte de garantie en tant que preuve de garantie aussi bien que votre nom, numéros de téléphone au poste de travail et/ou au domicile, votre adresse et une description détaillée des défauts. Les produits sous garantie réparés seront retournés port payé aux destinations à l'intérieur du Canada. Le consommateur sera responsable de tous frais de transport et d'autres frais qui s'y rapportent pour faire expédier les produits à destinations à l'extérieur du Canada.</p>
<p><b>L'ENTIERE GARANTIE</b></p>	
<p>Cette garantie représente l'entière garantie donnée par écrit par KENWOOD. KENWOOD ne se tient aucunement responsable de toutes extensions ni de toutes augmentations de cette garantie faites ou entreprises par toutes personnes, parties, concessionnaires ou centres de service ou par leurs agents ou employés au nom de KENWOOD au moyen d'affirmations verbales ou écrites, d'annonces ou de promotions, y inclus tous programmes ou plans de garantie étendue que puissent offrir les concessionnaires ou les centres de service, à moins que KENWOOD n'y ait consenti par écrit d'avance.</p>	
<p><b>RENONCIATION</b></p>	
<p>KENWOOD renonce à toutes responsabilités de perte de temps, d'emploi du produit, de tous dommages indirects ou accessoires causés à d'autres produits ou biens, de tous inconvénients ou de toutes pertes commerciales.</p>	
<p><b>AVIS AUX CONSOMMATEURS</b></p>	
<p>Les stipulations contenues dans la présente garantie écrite n'ont pas pour but de limiter, de modifier, de diminuer, de rejeter ni d'exclure d'autres garanties ni droits énoncés dans n'importe quelles lois ou législations provinciales ou fédérales.</p>	
<p><b>IMPORTANT</b></p>	
<p>KENWOOD ne considère pas cette garantie toute seule comme étant une preuve d'achat valide. Lorsqu'on demande du service sous garantie, il faudra présenter la copie originale du contrat de vente aussi bien que cette carte de garantie en tant que preuve de garantie. On recommande de les conserver dans un lieu sûr au cas où elles s'avèreraient nécessaires à l'avenir.</p>	
<p><b>KENWOOD ELECTRONICS CANADA INC.</b> <b>6070 Kestrel Road, Mississauga, Ontario, Canada L5T 1S8</b> <b>Téléphone: (905) 670-7211</b> <b>Télécopieur: (905) 670-7248</b></p>	

## Free Manuals Download Website

<http://myh66.com>

<http://usermanuals.us>

<http://www.somanuals.com>

<http://www.4manuals.cc>

<http://www.manual-lib.com>

<http://www.404manual.com>

<http://www.luxmanual.com>

<http://aubethermostatmanual.com>

Golf course search by state

<http://golfingnear.com>

Email search by domain

<http://emailbydomain.com>

Auto manuals search

<http://auto.somanuals.com>

TV manuals search

<http://tv.somanuals.com>