

KitchenAid

Stand Mixer 5K45 Series, 5KSM45 - 5KSM200 Series



| | | | | | |
|-----------|-------------------------------------|-----|-----------|--|-----|
| EN | Use and Care manual | 2 | FI | Käyttö- ja huolto-opas | 113 |
| DE | Gebrauchs- und Pflegeanleitung | 13 | DA | Vejledning til anvendelse og vedligehold | 123 |
| FR | Manuel d'utilisation et d'entretien | 25 | IS | Notenda & Meðhöndlunar handbók | 133 |
| IT | Manuale d'uso e manutenzione | 38 | RU | Руководство по эксплуатации и уходу | 143 |
| NL | Gebruiks- en onderhoudshandleiding | 49 | PL | Instrukcja obsługi i konserwacji | 156 |
| ES | Manual de uso y cuidado | 60 | CS | Návod k použití a údržbě | 166 |
| PT | Manual de utilização e manutenção | 71 | TR | Kullanım ve Bakım kılavuzu | 176 |
| EL | Εγχειρίδιο Χρήσης και Φροντίδας | 82 | UK | Посібник із використання й догляду | 186 |
| SV | Handbok för skötsel och användning | 93 | AR | دليل الاستخدام والعناية | 1 |
| NO | Håndbok for bruk og vedlikehold | 103 | | | |



PARTS AND FEATURES



- | | | | |
|----------|---|-----------|------------------------------------|
| 1 | Speed Control Lever | 8 | Bowl Clamping Plate |
| 2 | Motor Head | 9 | Bowl** |
| 3 | Attachment Hub | 10 | Pouring Shield* |
| 4 | Attachment Knob | 11 | 2.8 L (3 qt) Stainless Steel Bowl* |
| 5 | Motor Head Locking Lever (not shown) | 12 | Dough Hook |
| 6 | Beater Shaft | 13 | Wire Whip |
| 7 | Beater Height Adjustment Screw (not shown) | 14 | Flex Edge Beater* |
| | | 15 | Flat Beater* |
| | | 16 | Pastry Beater* and Scraper*** * |

*Included with select models only. Also available as optional accessory.

**The Bowl design, size and material depend on the Stand Mixer model.

***Can also be used to scrape your bowl.





PRODUCT SAFETY

Your safety and the safety of others are very important.

We have provided many important safety messages in this manual and on your appliance. Always read and obey all safety messages.



This is the safety alert symbol.

This symbol alerts you to potential hazards that can kill or hurt you and others.

All safety messages will follow the safety alert symbol and either the word "DANGER" or "WARNING." These words mean:

⚠ DANGER

You can be killed or seriously injured if you don't immediately follow instructions.

⚠ WARNING

You can be killed or seriously injured if you don't follow instructions.

All safety messages will tell you what the potential hazard is, tell you how to reduce the chance of injury, and tell you what can happen if the instructions are not followed.

IMPORTANT SAFEGUARDS

When using electrical appliances, basic safety precautions should always be followed, including the following:

1. Read all instructions. Misuse of appliance may result in personal injury.
2. To protect against risk of electrical shock, do not put Stand Mixer in water or other liquid.
3. This appliance is not intended for use by persons (including children) with reduced physical, sensory, or mental capabilities, or lack of experience and knowledge, unless they have been given supervision or instruction concerning use of the appliance by a person responsible for their safety.
4. European Union Only: Appliances can be used by persons with reduced physical, sensory or mental capabilities or lack of experience and knowledge if they have been given supervision or instruction concerning use of the appliance in a safe way and understand the hazards involved. Children shall not play with the appliance.
5. European Union Only: This appliance shall not be used by children. Keep the appliance and its cord out of reach of children.
6. Turn the appliance OFF/0, then unplug from the outlet when not in use, before assembling or disassembling parts and before cleaning. To unplug, grasp the plug and pull from the outlet. Never pull from the power cord.
7. Avoid contacting moving parts. Keep hands, hair, clothing, as well as spatulas and other utensils away from beater during operation to reduce the risk of injury to persons and/or damage to the Stand Mixer.
8. Do not operate any appliance with a damaged cord or plug, or after the appliance malfunctions, or is dropped or damaged in any manner. Return appliance to the nearest Authorised Service Facility for examination, repair, or electrical or mechanical adjustment.



PRODUCT SAFETY

9. The use of attachments not recommended or sold by KitchenAid may cause fire, electrical shock or injury.
10. Do not use the Stand Mixer outdoors.
11. Do not let the cord hang over edge of table or counter.
12. Do not let the cord contact hot surfaces, including the stove.
13. Remove Flat Beater, Flex Edge Beater, Wire Whip, Dough Hook, or Pastry Beater from Stand Mixer before washing.
14. Children should be supervised to ensure that they do not play with the appliance.
15. If the supply cord is damaged, it must be replaced by the manufacturer, its service agent, or similarly qualified persons in order to avoid a hazard.
16. Never leave the appliance unattended while it is in operation.
17. To avoid product damage, do not use the Stand Mixer Bowls in areas of high heat such as an oven, microwave, or on a stovetop.
18. Allow the appliance to cool completely before putting on or taking off parts, and before cleaning the appliance.
19. Refer to the “Care and Cleaning” section for instructions on cleaning the surfaces in contact with food.
20. This appliance is intended to be used in household and similar applications such as:
 - staff kitchen areas in shops, offices, or other working environments;
 - farmhouses;
 - by clients in hotels, motels and other residential type environments;
 - bed and breakfast type environments.


SAVE THESE INSTRUCTIONS

Instructions are also available online, visit our website at:

www.KitchenAid.co.uk or www.KitchenAid.eu

ELECTRICAL REQUIREMENTS

⚠ WARNING



Electrical Shock Hazard

Plug into an earthed outlet.

Do not remove earth prong.

Do not use an adapter.

Do not use an extension cord.

Failure to follow these instructions can result in death, fire, or electrical shock.

Wattage:

300 W

For 5KSM125 - 5KSM200 Series

275 W

For 5K45, 5KSM45 - 5KSM100 Series

Voltage: 220-240 V~

Frequency: 50-60 Hz

NOTE: If the plug does not fit in the outlet, contact a qualified electrician. Do not modify the plug in any way. Do not use an adapter.

Do not use an extension cord. If the power supply cord is too short, have a qualified electrician or service technician install an outlet near the appliance.





PRODUCT SAFETY

DISPOSAL OF PACKING MATERIAL

The packing material is recyclable and is marked with the recycle symbol (♻). The various parts of the packing must therefore be disposed of responsibly and in full compliance with local authority regulations governing waste disposal.


ELECTRICAL EQUIPMENT WASTE DISPOSAL

Recycling the product

- This appliance is marked in compliance with law in the EU and UK covering, Waste Electrical and Electronic Equipment (WEEE).

- By ensuring this product is disposed of correctly, you will help prevent potential negative consequences for the environment and human health, which could otherwise be caused by inappropriate waste handling of this product.



- The symbol  on the product or on the accompanying documentation indicates that it should not be treated as domestic waste but must be taken to an appropriate collection centre for the recycling of electrical and electronic equipment.

For more detailed information about treatment, recovery and recycling of this product, please contact your local city office, your household waste disposal service, or the shop where you purchased the product.

DECLARATION OF CONFORMITY (UK)

This appliance has been designed, constructed and distributed in compliance with the safety requirements of UK Legislation: Electrical Equipment (Safety) Regulations 2016, Electromagnetic Compatibility Regulations 2016. The Ecodesign for Energy-Related Products and Energy Information (Amendment) (EU Exit) Regulations 2019. The Restriction of the Use of Certain Hazardous Substances in Electrical and Electronic Equipment Regulations 2012.

DECLARATION OF CONFORMITY (EU)

This appliance has been designed, constructed, and distributed in compliance with the safety requirements of EC Directives: Low Voltage Directive 2014/35/EU, Electromagnetic Compatibility Directive 2014/30/EU, Ecodesign Directive 2009/125/EC, RoHS Directive 2011/65/EU and following amendments.



PRODUCT USAGE

SPEED CONTROL GUIDE

| Speed | Action | Accessory | Description |
|-------|------------------------------|---|--|
| 1 | Stir | Flat Beater* Flex Edge Beater* | For slow stirring, combining, mashing, starting all mixing procedures. Use to add flour and dry ingredients to batter, and to add liquids to dry ingredients. Do not use Speed 1 to mix or knead yeast doughs. |
| 2 | Slow Mixing Stir | Flat Beater* Flex Edge Beater* Dough Hook Pastry Beater* | For slow mixing, mashing, faster stirring. Use to mix and knead yeast doughs, heavy batters and candies, start mashing potatoes or other vegetables, cut shortening into flour, and mix thin or splashy batters. Cut butter into flour to make pastry dough; Mash fruits and vegetables. |
| 4 | Mixing, Beating | Flat Beater* Flex Edge Beater* Wire Whip Pastry Beater* | For mixing semi-heavy batters, such as cookies. Use to combine sugar and shortening and to add sugar to egg whites for meringues. Medium speed for cake mixes. For shredding meats. |
| 6 | Beating, Creaming | | For medium-fast beating (creaming) or whipping. Use to finish mixing cake, doughnut, and other batters. High speed for cake mixes. |
| 8 | Fast Beating, Whipping | Wire Whip | For whipping cream, egg whites, and boiled frostings. |
| 10 | Fast Whipping | | For whipping small amounts of cream, egg whites, or for final whipping of mashed potatoes. |

NOTE: The speed control lever can be set between the speeds listed in the above chart to obtain speeds 3, 5, 7, and 9 if a finer adjustment is required. To move Speed Control Lever with ease, lift up slightly as you move it across the settings in either direction.

IMPORTANT: Do not exceed Speed 2 when preparing yeast doughs as this may cause damage to the Stand Mixer.

*Included with select models only. Also available as optional accessory.





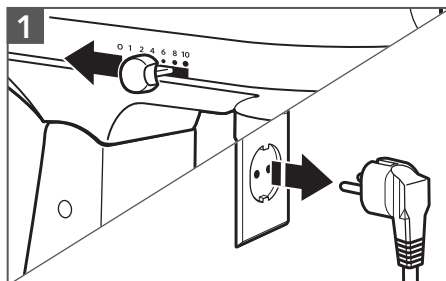
PRODUCT USAGE

ACCESSORY GUIDE

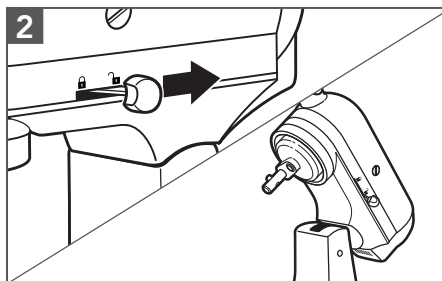
| Accessory | Use to mix | Suggested items |
|-----------------------------------|--------------------------------------|--|
| Flat Beater* Flex Edge Beater* | Normal to heavy mixtures: | Cakes, creamed frostings, candies, cookies, pie pastry, Shredding meats, biscuits, meat loaf, mashed potatoes. |
| Wire Whip | Mixtures that need air incorporated: | Eggs, egg whites, heavy cream, boiled frostings, sponge cakes, mayonnaise, some candies. |
| Dough Hook | Mixing and kneading yeast doughs: | Breads, rolls, pizza dough, coffee cakes, buns. |
| Pastry Beater* | Cut butter into flour: | For pie dough, biscuits and other pastries, mashing fruits and vegetables, and shredding meats. |

NOTE: Scraper assists in cleaning the Pastry Beater. It may also be useful in scraping ingredients from the bowl.

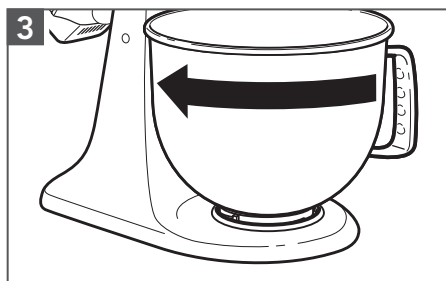
ATTACHING/REMOVING THE BOWL



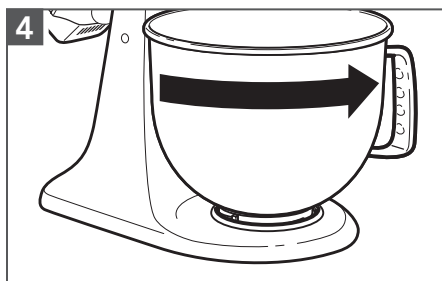
1 To attach Bowl: Turn Speed Control Lever to "0". Unplug Stand Mixer.



2 Unlock and lift the Motor Head. The lock** engages automatically to keep the head locked in place.



3 Place Bowl on Bowl Clamping Plate. Turn Bowl gently in clockwise direction.



4 To remove Bowl: Repeat steps 1 and 2. Turn Bowl gently counterclockwise.

NOTE: Motor Head should always be in locked position when using the Stand Mixer.

*Included with select models only. Also available as optional accessory.

**Locking option is available on select models.





PRODUCT USAGE

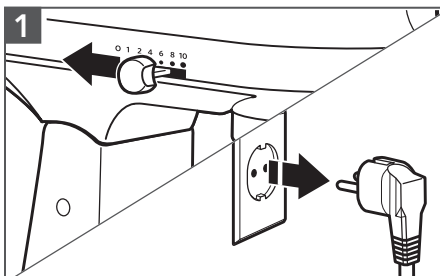
ATTACHING/REMOVING THE FLAT BEATER, FLEX EDGE BEATER*, WIRE WHIP, PASTRY BEATER* OR DOUGH HOOK

! WARNING

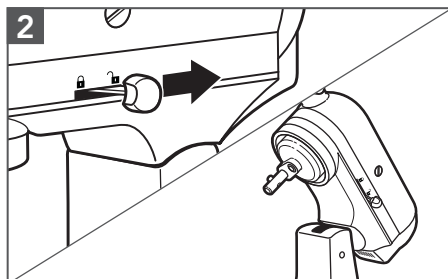
Injury Hazard

Unplug mixer before touching beaters.

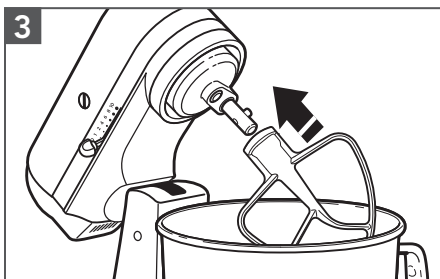
Failure to do so can result in broken bones, cuts, or bruises.



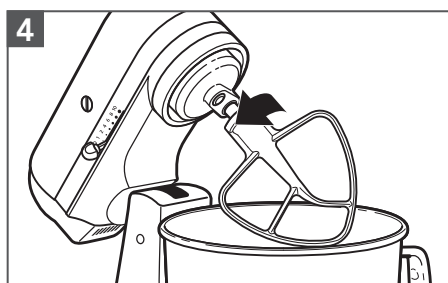
To attach accessory: Turn speed control to "0". Unplug Stand Mixer.



Unlock and lift the Motor Head. The lock** engages automatically to keep the head locked in place.



Slip accessory onto Beater Shaft and press upward as far as possible. Then, turn accessory to the right, hooking accessory over the pin on the shaft.



To remove accessory: Repeat steps 1 and 2. Press accessory upward as far as possible and turn to the left. Then pull accessory from the Beater Shaft.



Scan code for more information

* Included with select models only. Also available as an optional accessory.

**Locking option is available on select models.

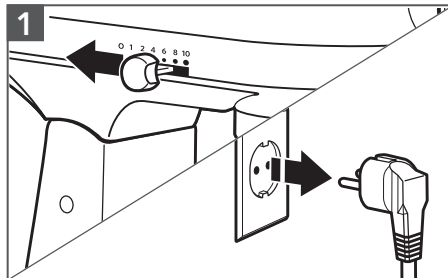




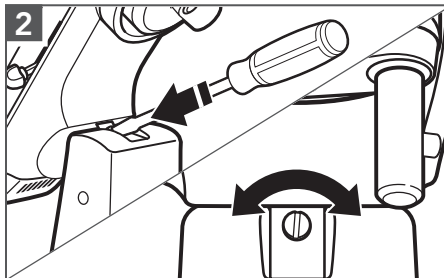
PRODUCT USAGE

BEATER TO BOWL CLEARANCE

Your Stand Mixer is adjusted at the factory so the Flat Beater just clears the bottom of the Bowl. If, for any reason, the Flat Beater hits the bottom of the Bowl or is too far away from the Bowl, you can correct clearance easily.



Turn Speed Control Lever to "0". Unplug Stand Mixer.

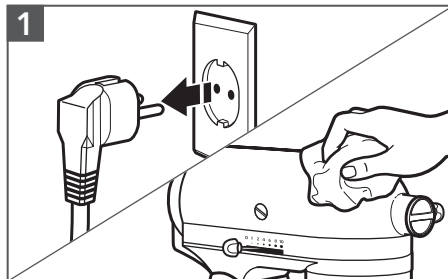


Lift motor head. Turn screw slightly counterclockwise (left) to raise Flat Beater or clockwise (right) to lower Flat Beater. Make adjustment with Flat Beater, so it just clears surface of Bowl. If you overadjust the screw, the Bowl lock lever may not lock into place.

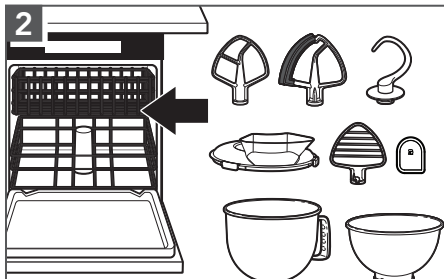
NOTE: When properly adjusted, the Flat Beater will not strike on the bottom or side of the Bowl. If the Flat Beater or the Wire Whip is so close that it strikes the bottom of the Bowl, coating may wear off the beater or wires on whip may wear.

CARE AND CLEANING

IMPORTANT: Allow the appliance to cool completely before putting on or taking off parts, and before cleaning the appliance.



Always be sure to unplug Stand Mixer before cleaning. Wipe Stand Mixer with a soft, damp cloth. Do not use household/commercial cleaners. Wipe off beater shaft frequently, removing any residue that may accumulate. Do not immerse in water.



Bowls, Pouring Shield*, Flat Beater*, Flex Edge Beater*, Pastry Beater* and Scraper** and Dough Hook may be washed on the top rack in dishwasher. Or, clean them thoroughly in hot sudsy water and rinse completely before drying. Do not store beaters on shaft.

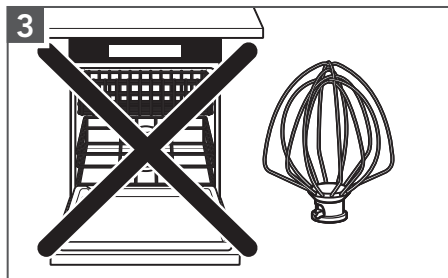
*Included with select models only. Also available as an optional accessory.

**Can also be used to scrape your bowl.





CARE AND CLEANING




IMPORTANT: The Wire Whip is only dishwasher-safe for models 5KSM200, 5KSM185, and 5KSM180. For all other models: Wash it thoroughly in hot sudsy water and rinse completely before drying. Do not store Wire Whip on shaft.

TROUBLESHOOTING

⚠ WARNING

Electrical Shock Hazard



Plug into an earthed outlet.

Do not remove an earth prong.

Do not use an adapter.

Do not use an extension cord.

Failure to follow these instructions can result in death, fire, or electrical shock.

| Problem | Solution |
|---|---|
| If Stand Mixer warms up during use: | Heavy loads should not exceed Speed 2. Under heavy loads with extended mixing time periods, you may not be able to comfortably touch the top of the unit. This is normal. |
| The Stand Mixer emits a pungent odour: | This is common with electric motors, especially when new. |
| If the Flat Beater hits the Bowl: | Stop the Stand Mixer. See the "Beater to Bowl clearance" section and adjust the beater to bowl clearance. |
| If your Stand Mixer should fail to operate, please check the following: | Is the Stand Mixer plugged in? |
| | Is the fuse in the circuit to the Stand Mixer in working order? If you have a circuit breaker box, be sure the circuit is closed. |
| If the problem cannot be corrected: | Turn off the Stand Mixer for 10-15 seconds, then turn it back on. If the Stand Mixer still does not start, allow it to cool for 30 minutes before turning it back on. |
| | See the "Terms of KitchenAid Guarantee ("Guarantee")" section. Do not return the Stand Mixer to the retailer; retailers do not provide service. |





TERMS OF KITCHENAID GUARANTEE ("GUARANTEE")

Covering U.K. - Ireland - South Africa - UAE

KitchenAid Europa, Inc., Nijverheidslaan 3, Box 5, 1853 Strombeek-Bever, Belgium ("Guarantor") grants the end-customer, who is a consumer, a Guarantee pursuant to the following terms.

FOR U.K.:

The Guarantee applies in addition to and does not limit or affect the statutory warranty rights of the end-customer against the seller of the product. In summary, the Consumer Rights Act 2015 says products must be as described, fit for purpose and of satisfactory quality. During the expected lifespan of your product your legal rights entitle you to the following:

- Up to 30 days: if your product is faulty, then you can get an immediate refund.
- Up to six months: if your product can't be repaired or replaced, then you're entitled to a full refund, in most cases.
- Up to six years: if your product does not last a reasonable length of time you may be entitled to some money back.

These rights are subject to certain exceptions. For detailed information please visit the Citizens Advice website www.adviceguide.org.uk or call 03454 04 05 06.

FOR IRELAND:

The Guarantee applies in addition to and does not limit or affect the statutory warranty rights of the end-customer against the seller of the product under the European Communities (Certain Aspects of the Sale of Consumer Goods and Associated Guarantees Regulations 2003 (S.I. No. 11/2003)) and other enactments governing the sale of consumer goods.

FOR SOUTH AFRICA:

The Guarantee applies in addition to and does not limit or affect the statutory warranty rights of the end-customer against the seller of the product. In summary, the Consumer Protection Act, 2008 says that products must be: (i) reasonably suitable for the purpose for which they are intended; (ii) in good working order, of good quality and free of any defects; (iii) useable and durable for a reasonable period of time, having regard to the use to which they would normally be put and to all the surrounding circumstances; and (iv) in compliance with any applicable standards or any other public regulations.

During the expected lifespan of your product and where the products are not purchased online, your legal rights will entitle you to the following:

- You will be entitled to a full refund, if you did not have the opportunity to examine the product before delivery and if you rejected delivery of the product on the basis that the type and quality of the product was not as reasonably expected or did not reasonably conform to the material specifications.
- Within 5 business days after delivery: you may rescind your purchase and request a refund, if your purchase resulted from direct marketing.
- Within 10 business days after delivery: you will be entitled to a full refund, if it is found that the product was unsuitable for a particular purpose specifically communicated to you by the Guarantor.
- Within 15 business days after delivery: you will be entitled to a refund if: (i) the product was not delivered to you; or (ii) if you returned the product to the Guarantor.
- Within 6 months after delivery: you will be entitled to a refund or a replacement product, if the product is defective or fails to operate in terms of its specifications.

Where you have purchased a product online your legal rights will be governed by the Electronic Communications and Transactions Act, 2002 and you will be entitled to the following:

- Within 7 days after conclusion of the transaction or after delivery: you may cancel your purchase without reason and without penalty.
- Within 30 days of the date of cancellation of the transaction: you will be entitled to receive a refund, if you have already made payment.
- You will only be liable for the direct costs of returning the product to the Guarantor.

FOR UAE:

The Guarantee applies in addition to and does not limit or affect the statutory warranty rights of the end-customer against the seller of the product.

1) SCOPE AND TERMS OF THE GUARANTEE

a) The Guarantor grants the Guarantee for the products mentioned under Section 1.b) which a consumer has purchased from a seller or a company of the KitchenAid-Group within the following countries: U.K., Ireland, or South Africa, or the United Arab Emirates (UAE).

b) The Guarantee period depends on the purchased product and is as follows:

5KSM125 - 5KSM200 Five years full guarantee from date of purchase.

5K45, 5KSM45 - 5KSM100 Two years full guarantee from date of purchase.

c) The Guarantee period commences on the date of purchase, i.e. the date on which a consumer purchased the product from a dealer or a company of the KitchenAid-Group.

d) The Guarantee covers the defect-free nature of the product.

e) The Guarantor shall provide the consumer with the following services under this Guarantee, at the choice of the Guarantor, if a defect occurs during the Guarantee period:

- Repair of the defective product or product part, or
- Replacement of the defective product or product part. If a product is no longer available, the Guarantor is entitled to exchange the product for a product of equal or higher value.





TERMS OF KITCHENAID GUARANTEE ("GUARANTEE")

f) If the consumer wishes to make a claim under the Guarantee, the consumer has to contact the country specific KitchenAid service centres or the Guarantor directly at KitchenAid Europa, Inc. Nijverheidslaan 3, Box 5, 1853 Strombeek-Bever, Belgium;

Email-Address U.K.: CONSUMERCARE.UK@kitchenaid.eu

Email-Address IRELAND: CONSUMERCARE.IE@kitchenaid.eu

Toll Free Number U.K. & IRELAND: **00 800 381 040 26**

FOR SOUTH-AFRICA:

Our local KitchenAid Distributor:

KitchenAid Africa
PO Box 52102
V&A Waterfront
Cape Town
8002

Contact our distributor:

Telephone: +27 21 555 0700

You can contact our Customer Service Centre for Small Domestic Appliances from 8.30 am to 1.00 pm and from 1.30 pm to 5.00 pm or write to us at the following address: hello@kitchenaidafrica.com

FOR UAE:

AL GHANDI ELECTRONICS.

POST BOX NO. 9098,
DUBAI, UNITED ARAB EMIRATES
Toll free number: +971 4 2570007

g) The costs of repair, including spare parts, and any postage costs (if applicable) for the delivery of a defect-free product or product part shall be borne by the Guarantor. The Guarantor shall also bear the postage costs for returning the defective product or product part if the Guarantor or the country specific KitchenAid customer service centre requested the return of the defective product or product part. However, the consumer shall bear the costs of appropriate packaging for the return of the defective product or product part.

h) To be able to make a claim under the Guarantee, the consumer must present the receipt or invoice of the purchase of the product.

2) LIMITATIONS OF THE GUARANTEE

a) The Guarantee applies only to products used for private purposes and not for professional or commercial purposes.

b) The Guarantee does not apply in the case of normal wear and tear, improper or abusive use, failure to follow the instructions for use, use of the product at the wrong electrical voltage, installation and operation in violation of the applicable electrical regulations, and use of force (e.g. blows).

c) The Guarantee does not apply if the product has been modified or converted, e.g. conversions from 120 V products to 220-240 V products.

d) The provision of Guarantee services does not extend the Guarantee period, nor does it initiate the commencement of a new Guarantee period. The Guarantee period for installed spare parts ends with the Guarantee period for the entire product.

e) FOR SOUTH-AFRICA & UAE ONLY:

Further or other claims, in particular claims for damages, are excluded unless liability is mandatory by law.

After expiry of the Guarantee period or for products for which the Guarantee does not apply, the KitchenAid customer service centres are still available to the end-customer for questions and information.

Further information is also available on our website:

- For U.K. & Ireland: www.kitchenaid.eu

- For South-Africa: www.kitchenaidafrica.com

- For UAE: www.KitchenAid-MEA.com

PRODUCT REGISTRATION

Register your new KitchenAid appliance now: <http://www.kitchenaid.eu/register>

©2021 All rights reserved.

KITCHENAID and the design of the stand mixer are trademarks in the U.S. and elsewhere.



Free Manuals Download Website

<http://myh66.com>

<http://usermanuals.us>

<http://www.somanuals.com>

<http://www.4manuals.cc>

<http://www.manual-lib.com>

<http://www.404manual.com>

<http://www.luxmanual.com>

<http://aubethermostatmanual.com>

Golf course search by state

<http://golfingnear.com>

Email search by domain

<http://emailbydomain.com>

Auto manuals search

<http://auto.somanuals.com>

TV manuals search

<http://tv.somanuals.com>