

lenovo

Lenovo S930

Quick Start Guide v1.0



For Android 4.2 Software.
Read this guide carefully before using your phone.

Technical specifications



Model and system

Model: Lenovo S930

System: Android 4.2



Size and weight

Height: 170 mm Width: 86.5 mm Depth: 8.65 mm
Weight: 170 g



CPU and capacity

CPU: MT6582 Quad Core 1.3 GHz
Capacity: 4.67 GB



Camera

Type: CMOS
Pixels: 8.0 MP (back) + 1.6 MP (front)



Power and battery

Battery: 3000 mAh (Built-in rechargeable lithium-ion battery)



Display

Size: 5.98 inches (diagonal) Screen: Multi-touch display
Resolution: 1280 × 720 LCD type: IPS



Wireless communication

Bluetooth 3.0 WLAN WCDMA, GSM



GPS

First glance



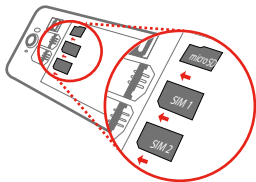
- | | | | | | |
|----|---------------|----|-----------------|----|----------------|
| 1 | Receiver | 2 | Front camera | 3 | Volume key |
| 4 | On/Off button | 5 | Speaker | 6 | Back |
| 7 | Home | 8 | App menu | 9 | Sub microphone |
| 10 | Back camera | 11 | Earphone jack | 12 | Flashlight |
| 13 | Micro USB | 14 | Main microphone | | |

Preparing your phone

You need to insert the SIM card provided by your carrier to use cellular services. Install your phone as shown.

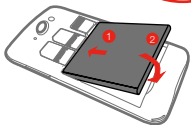


Step 1. Open the back cover.



Step 2. Insert the SIM cards and the memory card.

Tip: Insert (U)SIM card into SIM 1 slot and SIM card into SIM 2 slot.



Step 3. Install the battery.

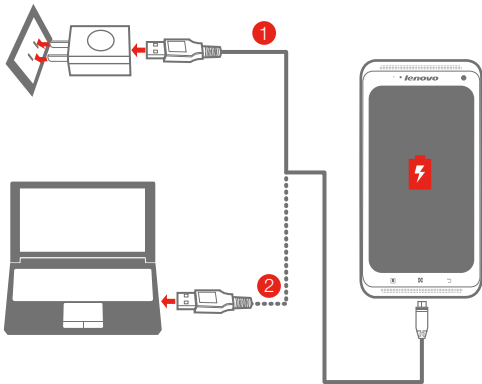


Step 4. Install the back cover.

DO NOT insert or remove the SIM cards while your phone is turned on. Doing so can permanently damage your SIM card or your phone.


Charging the battery


Charge the battery as shown.



Method 1. Connect your phone to a power outlet using the included cable and USB power adapter.

Method 2. Charge the battery using a computer.

 Low battery

 Fully charged

 Charging

 For more information about battery safety, see the *Important Product Information Guide*.

Learn more

For more information about Lenovo Mobile Phone functions, Regulatory Notices and other useful manuals, go to <http://support.lenovo.com/>.

Legal notices

Lenovo and the Lenovo logo are trademarks of Lenovo in the United States, other countries, or both.

Other company, product, or service names may be trademarks or service marks of others.

Manufactured under license from Dolby Laboratories. Dolby and the double-D symbol are trademarks of Dolby Laboratories.

First Edition (October 2013)

© Copyright Lenovo 2013.

Reduce | Reuse | Recycle



5SC9A464TJ

Printed in China

Free Manuals Download Website

<http://myh66.com>

<http://usermanuals.us>

<http://www.somanuals.com>

<http://www.4manuals.cc>

<http://www.manual-lib.com>

<http://www.404manual.com>

<http://www.luxmanual.com>

<http://aubethermostatmanual.com>

Golf course search by state

<http://golfingnear.com>

Email search by domain

<http://emailbydomain.com>

Auto manuals search

<http://auto.somanuals.com>

TV manuals search

<http://tv.somanuals.com>