

beko

Washing machine

User Manual



WTV7825XCW1

CE

Document number :2820529653_EN/ 04-07-21.(0:13)

1 General safety instructions

This chapter contains safety instructions that can help to avoid the risk of injury and property damage. All types of warranties are void if these instructions are not followed.

1.1 Safety for life and property

a


PAY ATTENTION!

- Never place the product on a carpeted floor. Otherwise, a lack of airflow under the machine will cause the electrical parts to overheat. This will cause problems with your product.
- When the product is not in use, unplug the power cord.
- Have the installation and repair work always be performed by an authorized service technician. The manufacturer cannot be held liable for damage caused by work performed by unauthorized persons.

- The water supply and drain hoses must be securely attached and undamaged. Otherwise, water may leak out.
- Never open the loading door or remove the filter if there is still water in the product. Otherwise there is a risk of flooding and injury from hot water.
- Do not open the locked loading door forcibly. The door will open immediately after the end of the wash cycle. If the door does not open, apply the solutions given for the error 'Loading door cannot be opened.' in the 'Troubleshooting' chapter. In the event that the loading door is forcibly opened, the door and lock mechanism may be damaged.
- Use detergents, softeners and supplements that are only suitable for automatic washing machines.
- Follow the instructions on the fabric label and on the detergent packaging.



1.2 Safety on hot surfaces

a  <small>PAY ATTENTION!</small>
<ul style="list-style-type: none">• The loading door window becomes hot during washing at higher temperatures. Therefore, in particular, do not allow children to touch the loading door window during washing.

1.3 Child safety

a <small>PAY ATTENTION!</small>
<ul style="list-style-type: none">• This product can be used by children aged 8 years and above and persons with physical, sensory or mental disorders or by inexperienced or unskilled persons if they are supervised or trained in the safe use of the product and understand the risks involved. Children should not play with the product. Cleaning and maintenance shall not be made by children unless they are supervised. Children under 3 years old should be kept away if they are under under constant supervision.

a <small>PAY ATTENTION!</small>
<ul style="list-style-type: none">• Packaging materials are hazardous to children. save all packaging materials in a safe place out of the reach of children.• Electrical products are dangerous for children. Keep children away from the product during its operation. Do not let them play with the product. Use the child lock to prevent children from manipulating the product.• Do not forget to close the loading door when you leave the room where the product is located.• Keep all detergents and additives in a safe place out of the reach of children. Close the lid of the detergent container or seal the package.

1.4 Electrical safety

B DANGER

- If the product malfunctions, do not operate it without having it repaired by an authorized service technician. There is a risk of electric shock!
- This product is designed to resume operation in the event of a power resumption after a power failure. If you want to cancel the program, see paragraph "Cancelling a program".
- Connect the product to a grounded outlet with a 16 A fuse. Make sure that the grounding wire is installed by a licensed electrician. Our company is not responsible for damages arising from the use of the product without grounding in accordance with local regulations.

B DANGER

- Do not clean the product by spraying or pouring water on it! There is a risk of electric shock!
- Never touch the power cable with wet hands! Never pull the plug out of the socket by pulling on the cable. Always press the plug with one hand and pull the plug out by grasping it with the other hand.
- The product must be unplugged from the mains socket during installation, maintenance, cleaning and repair work.
- If the power cord is damaged, it must be replaced replaced by the manufacturer, an authorized service agent or a similarly qualified person (preferably an electrician) or person designated by the importer to avoid potential hazards.

2. Important Safety and Environmental Instructions

2.1 WEEE Standard Compliance



This product complies with the EU WEEE standard (2012/19/EU). This product bears the classification symbol for the selective sorting of waste electrical and electronic equipment (WEEE).

This product is made of high quality parts and materials that can be reused and are suitable for recycling. Do not dispose of the product with normal household waste at the end of its life. Take it to a collection point for the recycling of electrical and electronic equipment. Contact your local authorities to find out where these collection points are located.

Compliance with RoHS Directive:

The product you have purchased complies with the EU RoHS Directive (2011/65/EU). It does not contain any harmful and prohibited materials as stipulated in the directive.

2.2 Packaging information

The product packaging materials are made from recyclable materials in accordance with our National Environmental Regulations. Do not dispose of the packaging material with household or other waste. Take it to the packaging material collection points specified by the local authorities.

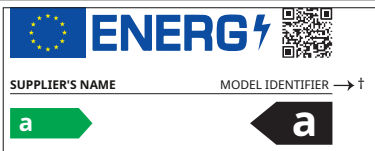
3 Intended use

- This product is designed for household use. It is not intended for commercial purposes and should not be used for any purpose not intended.
- The product may only be used to wash and rinse laundry marked for this purpose.
- The manufacturer declines any responsibility arising from incorrect use or transportation.
- The life of your product is 10 years. During this period, original parts are available to keep the device working properly.
- This appliance is intended for household use and similar applications such as:
 - staff kitchens in shops, offices and other work environments;
 - farms;
 - by customers in hotels, motels and other lodging facilities;
 - bed and breakfast locations;
 - common areas in apartment buildings or laundromats.

4 Technical specifications

Supplier name or trade name	Beko
Model Name	WTV7825XCW1
	7145745700
Rated power (kg)	7
Maximum spin speed (rpm)	1600
Built-in	no
Height (cm)	84
Width (cm)	60
Depth (cm)	59
Single Water Inlet / Double Water Inlet	†
• Available	
Electric current (V/Hz)	230V / 50Hz
Total current (A)	10
Total power (W)	2200
Model code	9211

C INFORMATION



• You can view the model information contained in the product database by going to the following website and searching for your model identifier (*) which can be found on the energy label.

<https://eprel.ec.europa.eu/>

Symbol table

To rinse	Spin + pumps	Pumps	Temperature	Centrifuge	Not Centrifuge	Tap water (cold)	No water	Time delay	Door lock	children lock	On off	Start / pause	Soil degree	Add item	Program to download
Wash	OK (end)	Cancel	Anti-crease+	To dry	Extra Dry	cupboard dry	Iron dry	Time drying	wash and to wear						

4.1 Installation

- Consult the nearest authorized service for the installation of your product.
- Site preparation and electrical, water supply and - drainage installations at the installation site are the responsibility of the customer.
- Make sure that the water inlet and drain hoses as well as the power cord are not bent, pinched or squeezed when placing the product in place after installation or cleaning work.
- Make sure that the installation and electrical connections of the product are performed by an authorized service. The manufacturer cannot be held liable for damage caused by work performed by unauthorized persons.
- Visually check the product for defects before installation. In that case, don't install it. Damaged products can pose a risk to your safety.

4.1.1 Suitable installation location

- Place the product on a hard and flat floor. Do not place it on deep-pile carpet or similar surfaces.
- When the washer and dryer are placed on top of each other, the total weight is - when loaded - 180 kg. Place the product on a firm and level floor that has sufficient capacity to support the load.
- Do not place the product on top of the power cord.
- Do not install the product in environments where the temperature may fall below 0 °C.
- It is recommended to leave a gap on the sides of the machine to reduce vibration and noise.
- Do not place the product on a raised floor next to the ledge or on a platform.
- Do not place heat sources such as hot plates, irons, ovens, etc. on the washing machine or use them on the product.

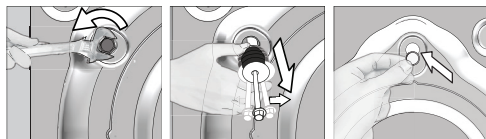
4.1.2 Remove packaging reinforcement



Tilt the machine back to remove the packing reinforcement. Remove the packaging reinforcement by pulling on the ribbon Pull. Enter this not only act.

4.1.3 Removing the Transport Locks

1. Loosen all bolts with a suitable wrench until they turn freely
2. Remove the transport safety bolts by turning them slightly.
3. Insert the plastic covers in the user manual bag into the holes on the back panel.



a

PAY ATTENTION!

- Remove the transport security bolts before using the washing machine! Otherwise, the product will be damaged.

C

INFORMATION

- Store the transportation security bolts in a safe place for reuse for future transportation.
- Install the transportation safety bolts in the reverse order of the disassembly procedure.
- Never move the product without the transport security bolts securely in place!

4.1.4 Connecting the water supply

C

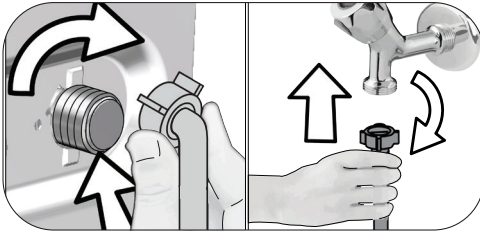
INFORMATION

- 10-80 liters of water per minute should flow from the tap to keep your machine running smoothly. Fit a pressure reducing valve if the water pressure is too high.

a

PAY ATTENTION!

- Models with single water supply should not be connected to the hot water tap. In this case, the laundry will be damaged or the product will switch to protection mode and not work.



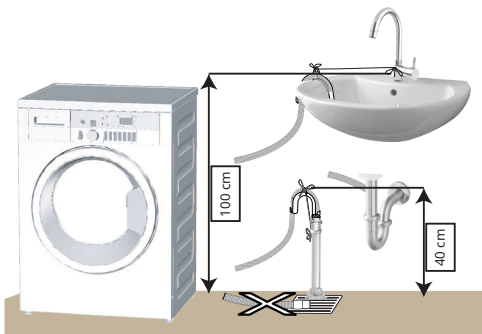
- 1 Tighten the hose nuts by hand. Never use a wrench when tightening the nuts.
- 2 When the hose connection is complete, check for leakage problems at the connection points by opening the valves all the way. If there are leaks, turn off the tap, remove the nut. Tighten the nut again carefully after checking the seal. Keep the taps of the product closed when not in use to prevent water leakage and resulting damage.

4.1.5 The drain hose connect to the drain

- Attach the end of the drain hose directly to the water drain, sink or bathtub.

a PAY ATTENTION!

- Your floor will flood if the hose comes out of its housing while draining water. There is also a risk of burns due to high washing temperatures! To avoid such situations and to ensure that the machine takes in and pumps water without any problems, the drain hose must be properly secured.



- Connect the drain hose at a height of at least 40 cm and at most 100 cm.

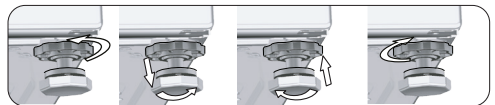
- In case the drain hose is raised after being at ground level or close to the ground (less than 40 cm above the ground), water drainage may become more difficult and the laundry may come out soaking wet. Therefore, follow the heights listed in the picture.
- To prevent the drain water from flowing back into the machine and to ensure easy drainage, do not immerse the end of the hose in the drain water and do not insert more than 15 cm into the drain. If it is too long, shorten it.
- The end of the hose must not be bent, it must not be stepped on and the hose must not be pinched between the drain and the machine.
- If the hose is too short, use it by adding an original extension hose. The hose should not be longer than 3.2 m. To avoid failure due to water leaks, the connection between the extension hose and the product drain hose must be properly fitted with a suitable clamp so that it does not come loose and leak.

4.1.6 Adjust legs

a PAY ATTENTION!

- In order for your machine to operate more quietly and without vibrations, it must be level and balanced on its feet. Balance the machine by adjusting the legs. Otherwise, the product may move and cause compression and vibration problems.
- Do not use any tools to loosen the locknuts. Otherwise they may be damaged.

- 1 Loosen the locknuts on the feet by hand.
- 2 Adjust the feet until the product is stable and balanced.
3. Retighten all locknuts by hand.



4.1.7 Electrical connection

Connect the product to a grounded outlet protected by a 16 amp fuse. Our company is not responsible for damage resulting from using the product without grounding in accordance with local regulations.

- The connection must comply with national regulations.
- The electrical outlet wiring must be sufficient to meet the requirements of the device. The use of an earth leakage circuit breaker is recommended.
- The power cord plug should be within easy reach after installation.
- If the current rating of the fuse or circuit breaker in the home is less than 16 amps, have a qualified electrician install a 16 amp fuse.
- The voltage stated in the "Technical specifications" must be the same as the mains voltage.
- Do not make connections via extension cords or multi-way plugs.

a

PAY ATTENTION!

- Damaged power cables must be replaced by qualified service technicians.

4.1.8 First use



Before you start using the product, make sure the preparations be affected according to the "Important instructions

for safety and environment" and the instructions in the "Installation" section.

To prepare the product for washing laundry, perform the first operation in the Drum cleaning program. If this program is not available on your machine, perform the method as described in section 4.4.2.

C

INFORMATION

- Use an anti-scale agent suitable for washing machines.
- Some water may have remained in the product due to the quality control processes in production. This is not harmful to the machine.

4.2 Preparation

4.2.1 Sorting the laundry

- † Sort the laundry according to the type of fabric, colour, degree of soiling and permitted water temperature.
- † Always follow the instructions on the clothing labels.

4.2.2 Preparing the laundry for washing

- Laundry with metal parts such as underwire bras, buckles or metal buttons will damage the machine. Remove the metal parts or wash the clothes in a laundry bag or pillowcase.
- Take all objects out of the pockets such as coins, pens and paper clips, turn the pockets inside out and brush them out. Similar objects may damage the product or cause noise.
- † Place small items of clothing such as baby socks and nylon stockings in a laundry bag or pillowcase.
- Insert curtains without compressing them. Remove fastening hooks from the curtains.
- Close zippers, sew loose buttons and mend tears.
- Wash 'machine washable' or 'hand washable' products only with a suitable program.
- Do not wash colors and white goods together. New, dark-colored cotton fabrics give off a lot of color. Wash them separately.
- Stubborn stains should be treated carefully before washing. Check with a dry cleaner if you are not sure.
- Only use paint / color refreshers and descaling agents that are suitable for machine washing. Always follow the instructions on the packaging.
- Wash trousers and delicates inside out.
- Place angora wool items in the freezer for a few hours before washing. This reduces fluff.
- Laundry soiled with materials such as flour, lime dust, milk powder, etc. must be shaken out well before being placed in the machine. Such dust and powder on the laundry may accumulate on the inner parts of the machine over time and cause damage.

4.2.3 Tips to save energy and water

The following information will help you to use the product in an ecological and energy-saving manner.

- Operate the product at the highest power allowed by the program you selected, but do not overload. See "Program and consumption table".
- Always follow the instructions on the detergent packaging.
- Wash lightly soiled laundry at low temperatures.
- Use faster programs for small amounts of lightly soiled laundry.
- Do not use prewash and high temperatures for laundry that is not heavily soiled or stained.
- If you intend to tumble dry your laundry, select the high recommended spin speed during washing process.
- Do not use more detergent than the amount recommended on the suit.

4.2.4 Loading the laundry

1. Open the loading door.
2. Place the laundry loosely in the machine.
3. Push the loading door shut until you hear a click. Make sure nothing gets in the door. The loading door is locked when a program is running. The door lock will open immediately after the wash cycle has finished. You can then open the loading door. If the door does not open, apply the solutions provided for the error 'Loading door cannot be opened.' in the 'Troubleshooting' chapter.

4.2.5 Correct charging capacity

The maximum load capacity depends on the type of laundry, the degree of soiling and the desired washing program.

The machine adjusts the amount of water according to the weight of the laundry you have placed.

a

WARNING!

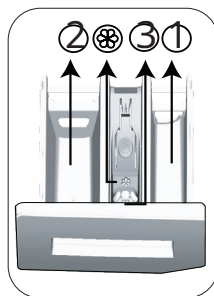
- Follow the information in the "Table program and consumption". If overcharged, the machine performance will decrease. In addition, noise and vibration problems may arise.

4.2.6 Detergent and use fabric softener

C

INFORMATION

- If you use detergent, fabric softener, starch, dye, bleach or descaler, read the manufacturer's instructions on the packaging and follow the dosage values. Use a measuring cup if possible.



The detergent drawer consists of three subjects:
– (1) for prewash
– (2) for main wash
– (3) for fabric softener
– (3) in addition, the fabric softener compartment a siphon.

Detergent, fabric softener and other cleaning agents

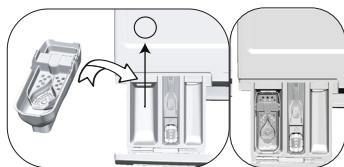
- Add detergent and fabric softener before starting the washing program.
- Do not leave the detergent drawer open during washing!
- If you run a program without prewash, do not put detergent in the prewash compartment (compartment no. "1").
- If you run a program with prewash, do not put liquid detergent in the prewash compartment (compartment no. "1").
- † Do not select a program with prewash when using a detergent bag or detergent bulb. Place the bag or bulb directly between the wax in the product.
- If you use liquid detergent, do not forget to place the liquid detergent container in the main wash compartment (compartment no. "2").

Selecting the detergent type

The detergent to be used depends on the washing program, type of material and colour.

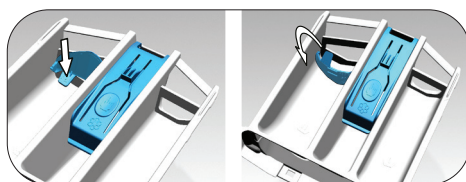
- Use different detergents for colored and white clothes.
- Wash your delicate clothes with special detergents (liquid detergent, wool detergent, etc.) especially for delicate clothes and on the recommended programs.

- It is recommended to use a liquid detergent for washing dark clothes and blankets.
- Wash wool at the recommended program with a special wool detergent.
- See the program descriptions section for recommended programs for different fabrics.
- All detergent recommendations are valid for the selectable temperature range of programmes.



If the product is equipped with a liquid detergent compartment:

- Press the dot indicated to turn the appliance if you want to use liquid detergent. The part that falls down will act as a barrier for the liquid detergent.
- If necessary, clean the appliance with water while it is in place or by removing it.
- If you use powder detergent, the appliance must be in the top position



If the product is not equipped with a liquid detergent container:

- Do not use liquid detergent for prewash in a program with prewash.
- Liquid detergent will stain your clothes if used with the end time function to start the program later. If you are going to use the end time function, do not use liquid detergent.

Use gel and detergent tablets

- If the gel detergent is liquid and your machine does not have a special container for liquid detergent, put the gel detergent in the main wash compartment during the first water supply. If your product is equipped with a liquid detergent container, put the detergent in this container before starting the programme.
- If the gel detergent is not liquid or is in a capsule, put it directly into the drum before washing.
- Place the detergent tablets in the main wash compartment (compartment no. "2") or directly into the drum before washing.

a WARNING!

- Only use detergents specifically intended for the washing machine.
- Do not use soap powder.

Adjust the amount of detergent

The amount of detergent to be used depends on the amount of laundry, the degree of soiling and the water hardness.

- Do not exceed the dosage recommended on the detergent packaging to avoid problems such as excessive foaming, poor rinsing, financial savings and also environmental protection
- Use less detergent for small amounts or lightly soiled clothes.

Using fabric softeners

Place the softener in the softener compartment of the detergent drawer.

- Do not exceed the (>max<>) level in the softener compartment.
- If the fabric softener is no longer very liquid, dilute it with water before placing it in the detergent drawer.

a WARNING!

- Do not use liquid detergents or other cleaning products other than fabric softeners to soften clothes that are suitable for washing machines.

Using Liquid Detergents

If the product is equipped with a liquid detergent container:

- Place the container for liquid detergent in compartment no. "2".
- If the liquid detergent has become less liquid, dilute it with water before pouring it into the detergent container.

The use of starch

- Add liquid starch, powdered starch or colorant to the fabric softener compartment.
- Do not use fabric softener and starch together in a wash cycle.
- Wipe the inside of the machine with a damp and clean cloth after using starch.

Using anti-limescale products

- If necessary, only use anti-scaling agents specifically intended for washing machines.

Use of bleach

- Select a program with prewash and add bleach at the start of the prewash. Do not put detergent in the prewash compartment. As an alternative application, select a program with extra rinse and add bleach

while the machine takes water from the detergent compartment during the first rinse phase.

- Do not use bleach mixed with detergent.
- Use a small amount (about 50 ml) of bleach and rinse the clothes well, as this will cause skin irritation.
- Do not pour bleach on the laundry.
- Do not use bleach on colored laundry.
- When using oxygen-based bleach, select a program that washes the laundry at a low temperature.
- Oxygen-based bleach may be used in conjunction with laundry detergent. If the thickness is not the same as that of the detergent, first put the detergent in compartment no. Place "2" in the detergent drawer and wait for the detergent to drain when the product takes water. While the machine continues to take in water, add the bleach to the same compartment.

4.2.7 Tips for efficient washing

		Clothing			
		Light colors and <small>Kitchen appliances</small>	Colors	Black / dark colors	Delicates / wool / silk
Soil Degrees	heavily soiled (Tough stains like grass, coffee, fruit, and blood.)	(Recommended temperature based on the degree of dirt: 40-90 oC)	(Recommended temperature based on the degree of soiling: cold - 40 oC)	(Recommended temperature based on the degree of soiling: cold - 40 oC)	(Recommended temperature based on the degree of dirt: cold -30 oC)
	Normally soiled (For example for causes stains through the body on collars and cuffs.)	Stains may require pretreatment or prewash. Washing powder and liquid detergents recommended for whites can be used in recommended doses for heavily soiled laundry. It is recommended to use washing powder to clean clay and dirt and bleach sensitive stains.	Washing powder and liquid detergents recommended for colored laundry can be used in doses recommended for heavily soiled laundry. It is recommended to use washing powder to clean clay and dirt and bleach sensitive stains. Use detergents without bleaching agents.	Liquid Detergents suitable for colored laundry and dark clothes can in the recommended doses are used for heavily soiled laundry.	Prefer liquid detergents that became special developed for fine laundry. Wool and silk should be washed with special developed for that purpose detergents.
	lightly soiled (Without visible stains.)	Washing powder and liquid detergents recommended for whites can be used in recommended doses for normally soiled laundry.	Washing powder and liquid detergents recommended for colored laundry can be used in doses recommended for normally soiled laundry. Use detergents that do not contain bleach.	Liquid Detergents suitable for colored laundry and dark clothes colors can be used in the recommended doses are used for normally soiled laundry.	Prefer liquid detergents that became special developed for delicates. Wool and silk should be washed with special developed for that purpose detergents.

4.2.8 Displayed program time

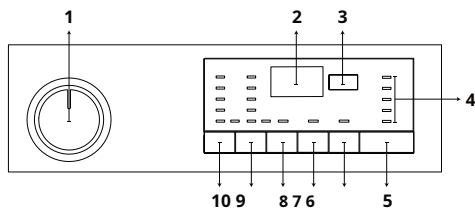
You can see the duration of the program on the machine's screen when you select a program. The duration of the program is automatically adjusted while the program is running, depending on the amount of laundry you have loaded in your machine, the foam, an unbalanced load, fluctuations in the power supply, the water pressure and the program settings.

SPECIAL CASE:When starting the Cottons and Cottons Eco programmes, the display shows the duration of half a load, which is the most common use. After the program starts, the actual load is detected by the machine within 20-25 minutes.

If the detected load is more than half a load, the washing program will be adjusted accordingly and the program duration will be increased automatically. You can see this change on the display.

4.3 Operating the product

4.3.1 Control panel



1 - Program selector knob (top position On / Off)

2 - Screen

3 - End time setting button 4 -

Program progress indicator 5 - Start/pause button

6 - Auxiliary function button 3 7 -

Auxiliary function button 2 8 -

Auxiliary function button 1

9 - Spin speed control knob 10 -

Temperature control knob

4.3.2 Preparing the machine

1. Make sure the hoses are connected securely.
2. Plug the machine into the wall socket.
3. Fully open the tap.
4. Place the laundry in the machine.
5. Add detergent and fabric softener.

4.3.3 Program selection and tips for efficient washing

1. Select the appropriate program for the type, amount and degree of soiling of the laundry according to the "Table of program and consumption" and the temperature table below.
2. Select the desired program with the Program Selection knob.

4.3.4 Table program and consumption

NL		Help function								Selectable temperature range in C
Program	max. Load (kg)	Water consumption (l)	Energy consumption (kWh)	max. Speed	prewash	Fast+	Pet Hair Removal	Anti wrinkle		
Cotton	90	7	95	2.40	1600	†	†	†	†	Cold - 90
	60	7	95	1.80	1600	†	†	†	†	Cold - 90
	40	7	93	0.97	1600	†	†	†	†	Cold - 90
Eco 40-60	40 ***	7	52	0.840	1600					40-60
	40 ***	3.5	38	0.540	1600					40-60
	40 ***	2	28	0.290	1600					40-60
Synthetic	60	3	75	1.35	1200	†	†	†	†	Cold - 60
	40	3	70	0.85	1200	†	†	†	†	Cold - 60
Xpress / Super Xpress	90	7	66	2.20	1400		†		†	Cold - 90
	60	7	66	1.20	1400		†		†	Cold - 90
	30	7	66	0.20	1400		†		†	Cold - 90
Xpress / Super Xpress + Fast+	30	2	40	0.15	1400		†		†	Cold - 30
Mix 40	40	3.5	83	1.00	800	†	†		†	Cold - 40
Wool	40	1,5	62	0.55	1200					Cold - 40
Delicate	40	3.5	60	0.79	800					Cold - 40
Sportswear	40	3.5	58	0.60	1200	†				Cold - 40
Dark textile	40	3	88	1.05	1200	†	†	†	†	Cold - 40
StainExpert	60	3.5	85	1.70	1600	†	†			30-60
down jacket	60	2	105	1,90	1000					40-60
shirts	60	3	70	1,90	800	†	†	†	†	40-60
Hygiene+	90	7	135	2,70	1600					40-90
Drum cleaning	90	†	85	2,60	600					90

• : Selectable

* : Automatically selected, cannot be canceled.

** : Eco 40-60 with temperature selection 40 °C the test program conforms

EN 60456:2016/A11:2020 and energy label according to the Commission Delegated Regulation (EU) 2019/2014

- : See program description for maximum load.

C

INFORMATION

- Water and power consumption may vary due to changes in water pressure, water hardness and water temperature, ambient temperature, type and amount of laundry, selection of auxiliary functions and spin speed and variations in mains voltage.
- You can see the washing time on the machine's display when you select a program. Depending on the amount of laundry loaded in the machine, there may be a difference of 1 to 1.5 hours between the time shown on the display and the actual time of the washing program. The time is automatically corrected just after the washing program starts.
- The auxiliary functions in the table may differ depending on the model of your machine.
- Selection modes of auxiliary functions can be changed by the manufacturer. Existing choice modes can be removed or new choice modes can be added.
- Always select the lowest temperature that is suitable. The most efficient programs in terms of energy consumption are mainly those that operate at low temperatures and have a long duration.
- Noise and residual moisture content are affected by the spin speed: the higher the spin speed in the spin phase, the higher the noise and the lower the residual moisture content.

Consumption values (NL)								
	Temperature selection (°C)	Spin speed (rpm)	Capacity (kg)	Program duration (hh:mm)	Energy consumption (kWh/ cycle)	Water consumption (l/cycle)	Wash temperature (°C)	Residual moisture content †
Eco 40-60	40	1600	7	03:27	0.840	52	34	44
	40	1600	3.5	02:41	0.540	38	34	44
	40	1600	2	02:41	0.290	28	24	45
Cotton	20	1600	7	03:25	0.600	93	20	44
Cotton	60	1600	7	03:25	1,800	95	60	44
Synthetic	40	1200	3	02:10	0.850	70	40	40
Xpress / Super Xpress	30	1200	7	00:28	0.200	66	23	62

The values given for the programs, except those of the Eco 40-60 program, are indicative only.

4.3.5 Main programs

Depending on the type of material, use the following main programs.

• Cotton

You can wash your durable cotton laundry with this program (sheets, bed linen, towels, bathrobes, underwear, etc.). When the quick wash function button is pressed, the program duration is considerably shorter, but an effective washing performance is guaranteed by intensive washing movements. If the quick wash function button is not selected, your heavily soiled laundry will be washed and rinsed with superior performance.

• Synthetic

You can use this program to wash T-shirts, blended synthetic cotton fabrics, etc. The program time is significantly reduced and efficient washing performance is guaranteed. If the quick wash function button is not selected, your heavily soiled laundry will be washed and rinsed with superior performance.

• Wool

Use this program to wash your woollens and delicates. Select the correct temperature that matches the clothing label. Your laundry is washed with very gentle movements to avoid damage.

4.3.6 End of the program

Additional programs are available on the machine for special cases.



INFORMATION

- Additional programs may differ depending on the machine model.

† Eco 40-60

The eco 40-60 program can clean normally soiled cotton laundry marked as washable at 40 °C or 60 °C in the same cycle. This program is used to assess compliance with EU ecodesign legislation.

Although the washing program lasts longer than all other programmes, it saves a lot of energy and water. Actual water temperature may differ

of the stated washing temperature. Loading the machine with less laundry (eg half capacity or less) may automatically shorten program phases. In this case, energy and water consumption will decrease more.

• Hygiene+

Adding a steam step at the beginning of the program makes the dirt less stubborn.

Use this program for your laundry (cotton clothes such as baby clothes, sheets, bed linen, underwear, etc.) for which you want an anti-allergic and hygienic washing program at high temperatures with intensive and long washing cycles. Thanks to the steam application before the program starts, the long heating time and extra rinse, a high level of hygiene is guaranteed.

- This program has been tested by "The British Allergy Foundation" (Allergy UK) in the 60°C temperature option and has been certified for its effectiveness in removing bacteria and mold as well as allergens.



Allergy UK is the trademark of The British Allergy Foundation. It label is designed to provide individuals with information as to whether the product has the amount of allergens in the room, where it is

installed, significantly reduce or limit/reduce/remove allergens. The aim is to provide evidence that the products have been scientifically tested or assessed to provide measurable results.

• Delicate

You can use this program to wash delicate items such as cotton/synthetic blend clothes or socks. The washing movements of this program are more gentle. Set the temperature to 20 degrees or use the cold water option for clothes whose color you want to protect.

† Xpress / Super Xpress

Use this program to quickly wash your lightly soiled cotton clothes. If the quick wash function is selected, the program duration can be reduced by up to 14 minutes. When the quick wash function is selected, a maximum of 2 (two) kilos of laundry may be washed.

† Dark textile

Use this program to protect the color of your dark clothes or jeans. This program offers good washing efficiency even at low temperatures, thanks to a special drum movement. It is recommended to use liquid detergent or wool detergent for dark colored laundry. Do not use this program for your delicate clothes containing wool, etc.

† Mix 40

You can use this program to wash cotton and synthetics together in one wash.

• Shirts

Use this program to wash cotton and synthetic shirts, as well as blended synthetics together. It reduces wrinkling. At the end of the program, steam is delivered to assist the anti-crease function. At the end of the programme, the special spin function and steam are activated to reduce creases in your shirts. If the quick wash function is selected, the pre-treatment algorithm is executed.

- Apply the pre-treatment agent directly to your clothes or add it to the detergent if the machine starts to take water from the main detergent compartment. This gives you the same performance as a normal wash, but in much less time. This extends the life of your shirts.

• Sportswear

Use this program to wash outdoor/sports clothing that contains both cotton/synthetic blends and water-resistant clothing with eg gore-tex. This program washes your laundry gently thanks to its special rotary movements.

- **StainExpert (Stain Expert)** Your washing machine has a special stain program that removes different types of stains in the most efficient way. Only use this program for durable colorfast cotton.

Do not wash delicate clothes or clothes that are not colourfast with this program. Check before

you are going to wash the clothing labels (recommended for shirts, pants, shorts, T-shirts, baby clothes, pyjamas, aprons, tablecloths, bed linen, duvet covers, sheets, bath/beach towels, towels, socks and cotton underwear suitable for long high temperature wash cycles). You can use the automatic stain program to wash 24 kinds of stains, divided into two different groups, according to the quick function selection. Below you see the stain groups based on the choice of the quick function.

Below you will find the stain groups based on the quick function.

When the quick function is selected:	
Blood	Fruit juice
Chocolate	Ketchup
Padding	Red wine
Egg	Curry
Tea	Jam
Coffee	Charcoal

If the quick function is not selected:	
Butter	food
Grass	mayonnaise
Mud	Salad dressing
Coke	Makeup
Sweat	Machine oil
Dirt on collars	baby food

- Select the stain program.
- In the above stain groups, find the type of stain you want to remove and choose the shortcut button to select the relevant group.
- Read the clothing labels carefully and make sure the selected temperature and spin speed are correct.

• Down jacket

Use this program to wash down coats, body warmers, jackets, etc. that have a "machine washable" label. Special twists ensure that the water reaches the air holes around the springs.

At the end of the programme, steam is applied to soften bulky laundry such as towels.

4.3.7 Special programs

For specific applications, select one of the following programs.

• To rinse

Use this when you want to rinse or starch separately.

• Spin + Pump

Use this program to remove the water on the clothes/in the machine.

Before selecting this programme, choose the desired spin speed and press the start/pause button. The machine will first pump out the water inside. It will then spin the laundry at the set spin speed and pump out the water that is released.

If you only want to drain the water without spinning your laundry, select the Drain+Spin program and select the No Spin function using the spin speed adjustment knob. Press the start/pause button.

spin speed. The spin speed will gradually decrease. Then, depending on the product model, "Rinse Hold" and "No Spin" options appear on the screen. If "No Spin" is selected, the rinse level lights will not come on.

rinse hold

If you do not want to remove the laundry immediately after the programme, you can use the rinse hold function and leave your laundry in the last rinse water to avoid creasing when there is no more water in the machine. After this phase, press the start/pause button if you want to drain the water without spinning your laundry. The program will resume where it left off, drain the water and finish.

If you want to spin the laundry in the water, adjust the spin speed and press the start/pause button. The program will resume. The water is drained, the laundry is spun and the program ends.

C

INFORMATION

- Use a lower spin speed for delicates.

4.3.8 Temperature selection

Whenever a new program is selected, the recommended temperature for that selected program will appear on the temperature indicator.

To lower the temperature, press the "Temperature Adjustment" button again. The temperature will gradually decrease. If cold water is selected, the temperature lights will remain off.

C

INFORMATION

- If the program has not yet reached the heating process, you can temperature without putting the machine in Pause mode.

4.3.9 Spin speed selection

When a new program is selected, the recommended spin speed of the selected program is shown on the spin speed indicator.

To decrease the spin speed, press the button to adjust the

C

INFORMATION

- If the program has not yet reached the spin cycle, you can adjust the speed without pausing the machine.

4.3.10 Selection of auxiliary functions

Select the desired auxiliary functions before starting the program. You can also select or cancel auxiliary functions that suit the running program while the machine is in operation without pressing the start/pause button. To do this, the machine must be in a step before the auxiliary function you want to select or cancel. If the auxiliary function cannot be selected or cancelled, the relevant function light will flash 3 times to warn the user.

C

INFORMATION

- If, before the machine starts, a second auxiliary function does not match the first selected one, the first selected function will be canceled and the second auxiliary function will continue to operate.
- An auxiliary function that is not compatible with the program cannot be selected. (See "Table of program and consumption")
- The auxiliary function buttons may differ depending on the model of your machine.

4.3.10.1 Utilities

† prewash

A prewash is only useful for very dirty laundry. If you do not use a prewash, you will save energy, water, detergent and time.



INFORMATION

- Prewash without detergent is recommended for net curtains and curtains.

• Fast+

By selecting this function, the duration of the relevant programs is reduced by 50%.

Thanks to the optimized washing steps, high mechanical activity and optimum water consumption, high washing results are achieved despite the shortened time.

• Pet Hair Removal

This feature lets you remove pet hair on your clothes more efficiently.

If you select this function, Prewash and Extra Rinse are added to the normal washing programme. In this way, more water is used for the wash cycle to ensure that pet hair is removed more efficiently.

4.3.10.2 Selected functions/programs by pressing the function buttons for 3 seconds

• Drum cleaning

Press and hold auxiliary function button 1 for 3 seconds to select this program.

Do this regularly (once every 1-2 months) to clean the drum and keep it hygienic. Run the program when the machine is completely empty. For better results, add limescale remover for washing machines to the detergent compartment. "2". When the program is finished, leave the loading door ajar to allow the inside of the machine to dry.



INFORMATION

- This is not a washing program. It's a maintenance program.
- Do not run this program if there are objects in the machine. If you try this the machine will detect a load and abort the program.

• Child lock

With the child lock you can prevent children from touching the machine. This way you can prevent changes to a running program.



INFORMATION

- If the program selector knob is turned while the child lock is activated, "Con" will appear on the display. When the child lock is activated, you cannot make any changes to programmes, selected temperature, spin speed or auxiliary functions apply.
- With the Child Lock activated, even if another program is selected with the program selector knob, the previously selected program will continue to run.

To activate the child lock:

Press and hold button 2 Auxiliary function for 3 seconds. While pressing the button for 3 seconds, C03, C02 and C01 will be displayed respectively. Then "Con" will appear to warn the user that the parental lock is activated. If you press any button or turn the program selector knob with child lock activated, the same warning will be displayed.

To deactivate the child lock:

Press and hold auxiliary function button 2 for 3 seconds while the program is running. While pressing the button for 3 seconds, C03, C02 and C01 will be displayed respectively. Then "COF" appears to warn the user that the child lock has been deactivated.

C

INFORMATION

- In addition to the above method, you can deactivate the child lock by turning the program selector knob to the on/off position when no program is running and select another programme.
- The child lock is not deactivated after a power failure or when the plug is pulled out of the socket.

† Anti wrinkle

If you press and hold the auxiliary function button 3 for 3 seconds, this function is selected and the program progress light of the relevant program lights up. If this function is selected, the drum will run for up to eight hours to ensure that the clothes do not wrinkle at the end of the programme. You can cancel the program and empty the machine at any time during these eight hours. Just press any button or turn the program selector knob to end the function. The program progress light will stay on even if you end the function by pressing any button. If you end the function by turning the program selector knob, the program follow-up light will go out or not depending on the selected programme.

4.3.11 End time adjustment

The end time adjustment function lets you set the end time of the program up to 19 hours later. You can increase this time in 1 hour intervals.

C

INFORMATION

- Do not use liquid detergent if you have selected the end time adjustment function. This can cause stains on the clothes.

1. Open the loading door, place the laundry and put detergent, etc.

2. Select the washing programme, temperature, spin speed and, if desired, the auxiliary functions.
3. Press the end time adjustment button and select the desired time.
4. Press the start/pause button. The delay time you have set is displayed. The countdown to the delay time begins. On the display, "_" moves from top to bottom until the delay time is reached.

C

INFORMATION

- If the program has not started, you can add laundry to the machine during the countdown to the delay time.
5. When the delay time is reached, the duration of the selected program is displayed. "_" will disappear and the selected program will start.

Changing the delay time

If you want to change the time during the countdown: Turn the program selector knob to cancel the delay time function and then set the desired time again.

1. Press the delay time adjustment button. When pressed for the first time, the program duration will be rounded to the closest time to a round number. With each subsequent press of the button, the time will increase by one hour.
2. To decrease the delay time, press the delay adjustment button repeatedly until the desired time is displayed.

To cancel the delay time function

If you want to cancel the delay start countdown and start the program immediately:

1. Turn the program selector knob to any programme. In this way, the delay time is cancelled. The end/cancel light flashes continuously.
2. Then select the program that you want to run again.
3. Press the start/pause button to start the program.

4.3.12 Starting the program

1. Press the start/pause button to start the program.
2. The program progress light, which indicates the start of the program, will light up.

C

INFORMATION

- If no program is started or if no button is pressed within 10 minutes during the program selection process, the lights on the display will turn off. The lights on the display will come on again when the program selector knob is turned or any button is pressed.

The machine checks the water level inside. If the level is suitable, the loading door light will turn off and the loading door can be opened in 1-2 minutes.

If the level is not suitable, the loading door light will remain on and the loading door cannot be opened. If you need to open the loading door while the loading door light is on, cancel the current program. See "Cancelling the program"

To open the loading door in the event of a power failure:

4.3.13 Program progress

The progress of a running program can be followed via the program progress light. At the start of each program step, the corresponding indicator light will light up.

C

INFORMATION

- If the "Anti-Crease+" auxiliary function is selected, the "End" and "Anti-Crease+" LEDs will light up simultaneously during this step.
- To end the program while the "Anti-Crease+" step is in effect, simply press any button or turn the program selector knob.

C

INFORMATION

- In the event of a power failure, you can manually open the loading door using the emergency handle located under the pump filter cover.

While the program is running, you can change the auxiliary functions, spin and temperature settings without interrupting the program. The change can only be made to a step that is executed after the program step that is currently running. If the change is not compatible, the relevant lights will flash 3 times.

a

WARNING!

- Before opening the loading door, make sure that there is no more water in the machine to prevent water from overflowing.

C

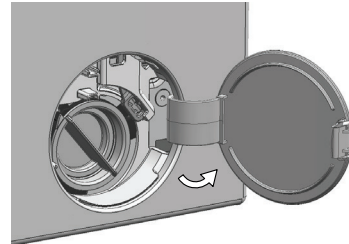
INFORMATION

- If the machine does not proceed to the spin step, the rinse hold function may have been activated or the automatic load imbalance detection system may have been activated due to an unbalanced distribution of the laundry in the machine.

4.3.14 Loading door lock

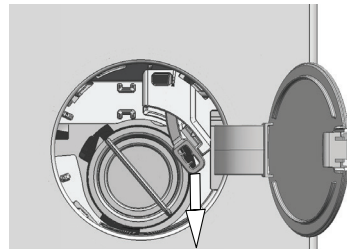
The loading door of the machine has a locking system that prevents the door from opening if the water level is not suitable for opening the door.

The loading door light will flash when the machine is put into pause mode.



† Switch off the device and remove the plug from the socket.

† Open the pump filter cover.



- † Remove the emergency handle from the loading door behind the filter cover with a tool.
- † Open the loading door by pulling down the loading door emergency lever.
- † If the door does not open, try pulling the lever down again.
- † Return the loading door emergency lever to its original position after opening the loading door.

4.3.15 Changing the selections after the program has started To put the program in pause mode:

While the program is running, press the start/pause button to put the machine in pause mode. The light of the current program will flash on the program progress indicator, indicating that the machine has entered pause mode.

If the door can be opened, the loading door light will go out in addition to the program step light.

Changing the auxiliary function, spin speed and temperature

Depending on the program step reached, you can cancel or select the auxiliary functions. See "Selection of auxiliary functions".

You can also change the speed and temperature settings. See "Spin speed selection" and "Temperature selection".



INFORMATION

- If the change is not allowed, the relevant light will flash 3 times.

Add and remove laundry

1. Press the start/pause button to pause the machine. The light of the relevant program, which the machine was in when it was paused, will flash.
2. Wait until the loading door can be opened.
3. Open the loading door and add or remove laundry.
4. Close the loading door.
5. If necessary, change the auxiliary functions, temperature and spin speed settings.
6. Press the start/pause button to start the program.

4.3.16 Canceling the program

To cancel the programme, turn the program selector knob to another programme. The previous program is cancelled. The end/cancel light flashes continuously to indicate that the program has been cancelled.

Your machine will end the program when you turn the program selector knob, but it will not drain the water inside. If you select and start a new program, the newly selected program will start depending on the step in which the previous program was cancelled. For example, the machine can take in extra water or continue washing with the water inside.



INFORMATION

- Depending on the step in which the program was cancelled, you may need to add detergent and softener again for the newly selected program.

4.3.17 End of the program

At the end of the program, "End" will be displayed.

1. Wait until the loading door light is completely off.
2. To switch off the machine, turn the program selector knob to the on/off position.
3. Take out your laundry and close the loading door. Your machine is now ready for the next wash cycle.

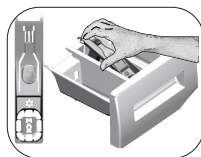
4.3.18 Your machine has the "Pause mode" function

If you do not start a program in the selection step or do nothing else after using the on/off button to switch on the machine, or if you do not perform any other operation within 10 minutes after the selected program ends, the machine will switch off automatically to power saving mode. And if your product has a display that shows the program time, this display will also be turned off completely. If you turn the program selector knob or touch any button, the lights and display will return to the previous position. The choices you make when exiting Energy Efficiency Mode may vary. Please check that your choices are correct before starting the program. Adjust the choices again if necessary. This is not a defect.

4.4 Maintenance and cleaning

The life of your product will be extended and regular problems will be reduced if it is cleaned regularly.

4.4.1 Cleaning the detergent drawer



Clean the detergent dispenser regularly (every 4-5 wash cycles) as shown below, to prevent the build-up of powder detergent in the long term.

To remove, lift the back of the siphon as shown.

If more than a normal amount of water and softener mixture collects in the softener compartment, the siphon needs to be cleaned.

- 1 Press the marked point of the siphon in the softener compartment and pull towards you until the drawer is removed from the machine.
2. Wash the detergent drawer and the siphon in a sink with enough lukewarm water. To prevent residues from coming into contact with your skin, clean it with a suitable brush and wear gloves.
- 3 Slide the tray back into place after cleaning and make sure it is seated correctly.

4.4.2 Cleaning the loading door and drum

For products with a drum cleaning program, see 'Operate in the product - programs'.

C INFORMATION

- Repeat the drum cleaning process for months.
- Use a detergent/anti-limescale agent suitable for the washing machines.



After each wash, make sure that no foreign matter remains in the drum.

If the holes in the cuff as shown in the picture are clogged, you can open it with a toothpick.

C INFORMATION

- Foreign metals cause rust spots in the drum. Clean the stains on the drum surface with stainless steel cleaners.

a WARNING!

- Never use steel wool. These damage the painted, chrome and plastic surfaces.

4.4.3 Cleaning the cabinet and control panel

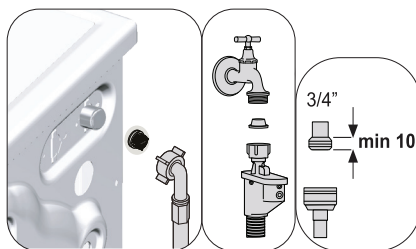
Wipe the machine cabinet with soap and water or, if necessary, a non-abrasive mild cleaning gel, and dry with a soft cloth.

Use only a soft and damp cloth to clean the control panel.

4.4.4 Clean the water supply filters

There is a filter on the end of each water supply valve on the back of the machine and also on the end of each water supply hose where they connect to the faucet. These filters prevent foreign substances and dirt in the water from entering the washing machine. The filters must

d because they get dirty.

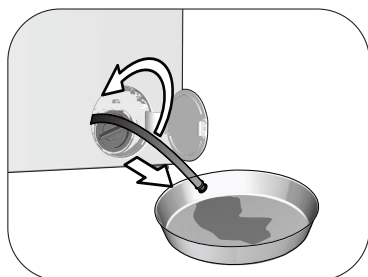
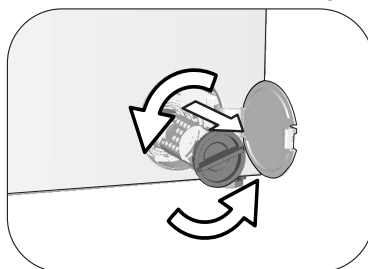


1. Close the taps.
2. Remove the nuts from the water supply hoses to access the filters on the water supply valves. Clean them with a suitable brush. If the filters are too dirty, remove them with pliers and clean them this way.
3. Remove the filters on the flat ends of the water supply hoses with the gaskets and clean them carefully under running water.
4. Carefully replace the seals and filters and tighten their nuts by hand.

4
e
h
d
s
h
w
l
I
w
d
m
e
r
B
v
b

expensive for water

drain hose
to pump:



go away

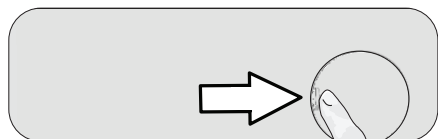
a
• V ac b ve
• A d and
like this
• D w

ten e
to pump away:

1 Remove the plug from the socket to disconnect the power supply.

a	PAY ATTENTION!
• The temperature of the water in the machine can reach 90 °C. To avoid the risk of fire, the filter must be cleaned after the water in the machine has cooled down.	

2. Open the filter cover.



- a Pull the emergency drain hose out of its seat.
- b Place a large container near the end of the hose. Drain the water into the container by removing the plug at the end of the hose. Block the hose supply by replacing the plug when the container is full. After the container has been emptied, repeat the above procedure to completely drain the water from the machine.

- c Once the water has drained, close the end with the plug and secure the hose in place.
- d Turn the pump filter and remove it.
- 4. Clean all debris in the filter as well as fibers, if any, around the pump impeller.
- 5. Replace the filter.
- 6. If the filter cover is in two pieces, close the filter cover by pressing the tab. If it is a piece, first put the tabs in the lower part in place and then push the upper part to close it.

5 Troubleshooting

Program does not start after loading door is closed.

- The Start / Pause / Cancel button is not pressed.
>>> Press the Start / Pause / Cancel button.
- It may be difficult to close the loading door in case of overload. >>>Reduce the amount of laundry and make sure the loading door is closed properly.

Program cannot be started or selected.

- The product has entered the self-protection mode due to a power problem (mains voltage, water pressure, etc.). >>> To cancel the programme, turn the Program Selection knob to select another programme. The previous program is canceled (see "Program cancellation").

There is water in the product.

- Some water may remain in the product due to the quality control processes during production. >>>This is not an error; water is not harmful to the product.

The product does not take water.

- The tap is turned off. >>>Open the taps.
- The water supply hose may be bent. >>>Remove the pleats from the hose.
- The water inlet filter is clogged. >>>Clean the filter.
- The loading door is not closed. >>>Close the door.

The product does not drain water.

- The water drain hose is clogged or twisted. >>>Clean or straighten the hose.
 - The pump filter is clogged. >>> Clean the pump filter.
- ## Product vibrates or makes noise.
- The product is not stable. >>>Set up the product in a stable manner by adjusting the legs.
 - A hard substance has entered the filter of the pump.
>>> Clean the pump filter.
 - The transport security bolts have not been removed.
>>> Remove the transport security bolts.
 - The product contains too little laundry. >>>Add more laundry to the product.
 - There is too much laundry in the product. >>>Take some laundry out of the product or distribute it more evenly by hand for more balance in the product.
 - The product rests on a rigid object. >>> Make sure that the product is not leaning on anything.

Water is leaking from the bottom of the product.

- The water drain hose is clogged or twisted. >>>Clean or straighten the hose.
- The pump filter is clogged. >>>Clean the pump filter.

The product stopped shortly after the program started.

- The machine has been temporarily shut down due to low voltage. >>>Operation will resume as soon as the voltage returns to a normal level.

Product immediately drains the added water.

- The drain hose is not at the appropriate height.
>>> Connect the water drain hose as described in the user manual.

During washing, no water is visible in the product.

- The water is in an invisible part of the product
>>>This is not a malfunction.

The loading door cannot be opened.

- The loading door lock has been activated due to the water level in the product. >>>Drain the water with the Pump or Spin program.
- The product is heating water or is in the spin cycle >>> Wait for the program to finish.
- The loading door may be stuck due to the pressure it has been subjected to >>>Grab the handle and push and pull the loading door until it releases and open the door.
- If there is no power, the loading door of the product will not open. >>>To open the loading door, open the filter cover of the pump and pull down the emergency handle on the back of this cover. See "Loading door lock"

Washing takes longer than indicated in the user manual.(*)

- The water pressure is too low. >>>The product waits for an appropriate amount of water to be supplied to avoid poor washing quality due to a reduced amount of water. Therefore, the washing time is longer.
- The voltage is too low. >>>Washing time is extended to avoid poor washing results due to low voltage supply.
- The water inlet temperature is low. >>> Time required to heat up the water increases in cold seasons. The washing time can also be extended to avoid poor washing results.
- The number of rinses and/or rinse water has increased.
>>> The product increases the amount of rinse water if a good rinse is required and adds an extra rinse phase if necessary.
- Excessive foaming has occurred and the automatic foam absorption system has been activated due to the use of too much detergent. >>> Use the recommended amount of detergent.

Program time does not count down. (On models with screen) (*)

- The timer stops during water supply. >>>The timer indicator will not count down until the product has enough water. The product will wait until there is enough water to avoid poor washing results due to lack of water. The timer will resume after that.
- The timer stops during the warm-up. >>>The timer will not count down until the machine has reached the selected temperature.
- The timer may stop during the spin cycle. >>>The automatic unbalanced load detection system may have been activated due to an unbalanced distribution of the laundry in the product.

Program time does not count down. †

- The charge in the product is unevenly distributed.
>>>The automatic unbalanced load detection system may have been activated due to an unbalanced distribution of the laundry in the drum.

Product does not switch to the spin phase. †

- The charge in the product is unevenly distributed.
>>>The automatic unbalanced load detection system may have been activated due to an unbalanced distribution of the laundry in the drum.
- The product will not spin if the water is not completely drained. >>>Check the filter and the drain hose.
- Excessive foaming has occurred and the automatic foam absorption system has been activated due to the use of too much detergent. >>> Use the recommended amount of detergent.

Washing result is poor: Laundry turns grey. †

- Insufficient detergent used over an extended period of time. >>>Use the recommended amount of detergent depending on the water hardness and the amount of laundry.

Washed at low temperatures for a longer period of time. †

Select the correct temperature for the laundry to be washed.

- Insufficient detergent used with hard water.
>>>Using insufficient detergent with hard water will cause the dirt to adhere to the clothes, which will turn the clothes gray over time. It is difficult to remove grayness once it occurs. Use the recommended amount of detergent suitable for the water hardness and the wash.
- Too much detergent has been used. >>> Use the recommended amount of detergent that is suitable for the water hardness and the laundry.

Washing result is bad: Stains do not disappear or the laundry is not white. †

- Too little detergent has been used. >>> Use the recommended amount of detergent that is suitable for the water hardness and the laundry.
- Too much laundry has been loaded. >>>Do not load too much laundry into the product. Load with quantities recommended in the "Table program and consumption".
- Bad program and temperature selected. >>> Select the correct program and temperature for the laundry to be washed.
- Wrong type of detergent used. >>>Use the original detergent suitable for the product.
- Too much detergent used. >>>Place detergent in the correct compartment. Do not mix bleach and detergent together.

Washing result is poor: Greasy stains appear on the laundry. †

- The drum has not been cleaned regularly. >>>Clean the drum regularly. For this procedure, see "Cleaning the loading door and drum".

Washing result is bad: Clothes smell unpleasant. †

- Odors and layers of bacteria develop on the drum as a result of continuous washing at lower temperatures and/or in short programmes. >>>Leave the detergent drawer and product loading door ajar after each wash. This way, the machine does not remain a humid environment where bacteria thrive.

Color of the clothes has faded. †

- Too much laundry has been loaded. >>>Do not load too much laundry.
- Detergent in use is damp. >>>Store detergents closed in an environment that is free from moisture and do not expose them to excessive temperatures.
- A higher temperature has been selected. >>>Select the correct program and temperature according to the type and degree of soiling of the laundry.

The washing machine does not rinse properly.

- The amount, brand and storage conditions of the detergent used are unsuitable. >>>Use a detergent that is suitable for the washing machine and your laundry. Store detergent sealed in a moisture-free area and do not expose it to extreme temperatures.
- Detergent was placed in the wrong compartment. >>> If the detergent is put in the prewash compartment, and the prewash cycle is not selected, the product may take this detergent during the rinsing or softening step. Put the detergent in the correct compartment.
- The pump filter is clogged. >>>Check the filter.
- The drain hose is crimped. >>>Check the drain hose.

Laundry became stiff after washing. †

- Too little detergent has been used. >>>Using too little detergent for the water hardness can cause the laundry to stiffen in time. Use a suitable amount of detergent according to the water hardness.
- Detergent was placed in the wrong compartment. >>> If the detergent is put in the prewash compartment, and the prewash cycle is not selected, the product may take this detergent during the rinsing or softening step. Put the detergent in the correct compartment.
- Detergent was mixed with the fabric softener.
>>> Do not mix the softener with the detergent. Wash and clean the drawer with hot water.

Laundry does not smell like the fabric softener. †

- Detergent was placed in the wrong compartment. >>> If the detergent is put in the prewash compartment, and the prewash cycle is not selected, the product may take this detergent during the rinse or softening step. Wash and clean the drawer with hot water. Put the detergent in the correct compartment.
- Detergent was mixed with the fabric softener.
>>> Do not mix the softener with the detergent. Wash and clean the drawer with hot water.

Detergent residue in the detergent drawer. †

- Detergent was placed in a wet drawer. >>>Dry the detergent drawer before adding the detergent.
- The detergent has become damp. >>>Keep detergents closed in a humid environment and do not expose them to too high temperatures.
- The water pressure is low. >>>Check the water pressure.
- The detergent in the main wash compartment got wet during the water intake for the prewash. The holes in the detergent dispenser are clogged. >>>Check the holes and clean them if they are clogged.
- There is a problem with the detergent drawer valves.
>>> Call the authorized service technician.

- Detergent was mixed with the fabric softener.
>>> Do not mix the softener with the detergent. Wash and clean the drawer with hot water.
- The drum has not been cleaned regularly. >>>Clean the drum regularly. For this procedure, see "Cleaning the loading door and drum".

Too much foam forms in the product. †

- Wrong detergents are used for the washing machine. >>>Use of detergents suitable for the washing machine.
- Too much detergent is being used. >>> Only use sufficient detergent.
- The detergent was stored under incorrect conditions. >>>Store the detergent in a closed and dry place. Do not store it in excessively warm places.
- Certain laundry, such as tulle, can foam too much due to its texture. >>>Use smaller amounts of detergent for this type of item.
- Detergent was put in the wrong compartment. >>>Place the detergent in the correct compartment.
- Softener is absorbed early by the product.
>>> There may be problems in the valves or in the detergent drawer. Call the Authorized Service Technician.

Foam comes out of the detergent drawer.

- Too much detergent is being used. >>>Mix 1 tablespoon of softener and l of water and pour into the main wash basin of the detergent drawer.
>>> Place an amount of detergent in the machine suitable for the programs and maximum load as indicated in "Table of program and consumption". If you add chemical products (stain removers, bleaches, etc.) you should reduce the amount of detergent.

Laundry remains wet after the program has ended. †

- Excessive foaming has occurred and the automatic foam absorption system has been activated due to the use of too much detergent. >>> Use the recommended amount of detergent.

(*) The product does not switch to the spin phase when the laundry is not evenly distributed in the drum to avoid damage to the machine and its surroundings. The laundry should be redistributed and spun again.

(**) The drum has not been cleaned regularly. Clean the drum regularly. See 4.4.2

a WARNING!

- If you are unable to solve the problem after following the instructions in this section, consult your dealer or an authorized service technician. Never attempt to repair a non-functional product yourself.

DISCLAIMER / WARNING (EN)

Some (simple) defects can be handled correctly by the end user without giving rise to safety problems or unsafe use, provided they are carried out within the limits and in accordance with the following instructions (see chapter “Self-repair”) .

For this reason, unless otherwise permitted in the “Self-Repair” section below, repairs must be performed by registered professional technicians to avoid safety issues. A registered professional mechanic is a professional mechanic who has been granted access to the instructions and spare parts list of this product by the manufacturer, in accordance with the methods described in legal acts in accordance with Directive 2009/125/EC.

However, the maintenance and repair work under the warranty conditions may only be carried out by the specialized representative (ie authorized professional technicians) who can be reached at the telephone number indicated in the user manual/warranty card or via your authorized dealer. For this reason, repairs performed by professional technicians (not authorized by Beko) will void the warranty.

Self-repair

The self-repair can be performed by the end user with regard to the following spare parts: door, hinges and seal, other seals, door lock assembly and plastic peripherals such as detergent compartments (an updated list will also be made available on support.beko.com from 1 March 2021).

In addition, to ensure the safety of the product and to avoid the risk of serious injury, the stated self-repair must be performed in accordance with the instructions in the self-repair manual or available at support.beko.com. For safety reasons, disconnect the power plug from the product before attempting any self-repair.

Repairs and attempted repair by end users of parts not included in this list and/or where the instructions in the self-repair manual or available on support.beko.com are not followed, may result in security issues that cannot be assigned to Beko and they will void the warranty of the product.

For this reason, we strongly advise against end-users attempting to make repairs on their own that fall outside the specified spare parts list and, in such situations, relying on an authorized professional mechanic or registered professional mechanics. However, such attempts by end users may cause safety issues and damage to the product and result in fire, flooding, electric shock and serious personal injury.

For example, but not limited to, the following repairs should be performed by authorized professional mechanics or registered professional mechanics: motor, pump assembly, motherboard, motor panel, display panel, heater, etc.

The manufacturer/seller cannot be held liable if end users do not follow the above instructions.

The availability of the spare parts of the washer or washer-dryer you have purchased is 10 years. During this period, the original spare parts are available for the correct operation of the washing machine or washer-dryer combination.

Free Manuals Download Website

<http://myh66.com>

<http://usermanuals.us>

<http://www.somanuals.com>

<http://www.4manuals.cc>

<http://www.manual-lib.com>

<http://www.404manual.com>

<http://www.luxmanual.com>

<http://aubethermostatmanual.com>

Golf course search by state

<http://golfingnear.com>

Email search by domain

<http://emailbydomain.com>

Auto manuals search

<http://auto.somanuals.com>

TV manuals search

<http://tv.somanuals.com>