

BLACK+DECKER™

LED UNDER CABINET LIGHTING

INSTRUCTION MANUAL

CATALOG NUMBERS

LEDC9-5WK

LEDC9-3WK

LEDC9-1WK

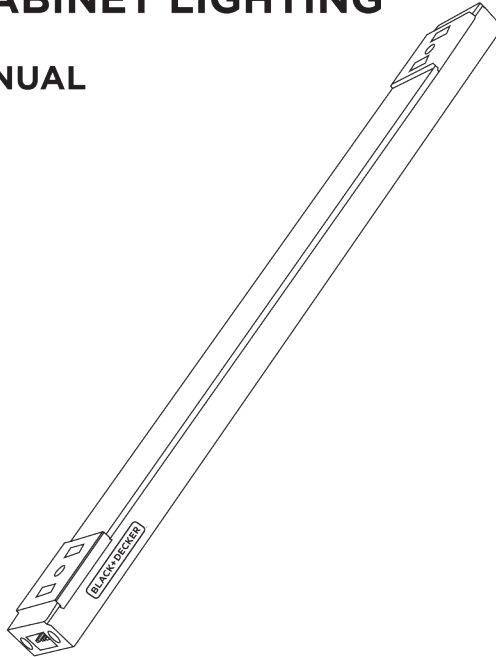
LEDC9-1W

LEDC9-5CK

LEDC9-3CK

LEDC9-1CK

LEDC9-1C



Thank you for choosing BLACK+DECKER!

PLEASE READ THIS MANUAL BEFORE RETURNING THIS PRODUCT FOR ANY REASON.

If you have a question or experience a problem with your Black+Decker purchase, go to PureOpticsLED.com/Support. If you can't find the answer or do not have access to the internet, call 1-855-784-4322 from 8 a.m. to 5 p.m. Monday – Friday to speak with an agent. Please have the catalog number available when you call. To find the catalog number, please refer to product packaging.

SAVE THIS MANUAL FOR FUTURE REFERENCE.

To register your new product visit
PureOpticsLED.com/New-Product

APPLICATION OPTIONS

Tool-Free

1. Wipe down the mounting surface with a clean, lint-free cloth.
2. Peel red backing from the adhesive.
3. With the adhesive side facing the mounting surface, place the piece firmly on its desired location and hold for 5 seconds.

Screw-In

1. Follow the Tool-Free application steps.
2. Remove light bars from bar mounting clips to expose the screw holes. (See FIG. 8) **NOTE:** Skip this step for wire clips as the screw hole is already exposed.
3. Drill 1/16" pilot holes through each exposed screw hole. (See FIG. 9)
4. Secure each mounting clip using the provided mounting screws.

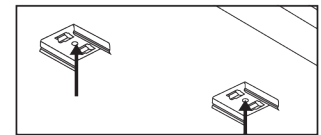


FIG. 8

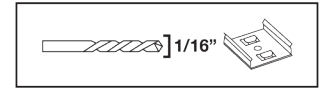


FIG. 9

INSTALLATION TIPS

Jumping a Sink or Stove

Connect a 30" jumper wire to the 72" jumper wire using the jumper extender to create enough length to jump a sink or stove. (See FIG. 10) If the 72" jumper is not included in your kit, a 108" Stove & Sink Jumper Wire (LEDJUMP108) is available for purchase.

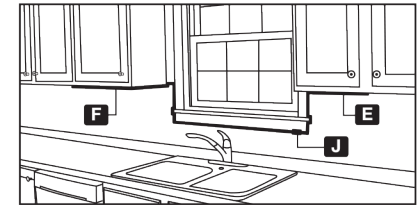


FIG. 10

Optimal Illumination

For cabinets up to 36" in length, one (1) light bar can be used. For cabinets over 36" in length, two (2) light bars should be used.

Light Bar Placement

Use the spacer provided in your kit to help measure and guide the placement of each light bar.

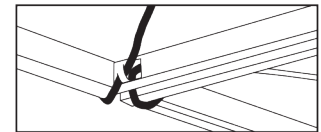


FIG. 11

Hiding Jumper Wires

Loop any excess wire at the back of the cabinet joint. If there is space between two side-by-side cabinets, hide excess wire in the opening. (See FIG. 11)

Running Wires Through Cabinets

Jumper Wires: To feed any size jumper wire through a cabinet, use a 1/2" drill bit (not included.) (See FIG. 12)

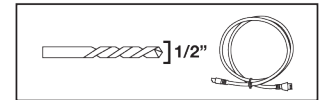


FIG. 12

AC Adapter Wire: To feed the AC adapter wire through a cabinet, use a 3/8" drill bit (not included.) (See FIG. 13)

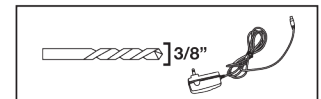


FIG. 13

THREE-YEAR LIMITED WARRANTY

Amax Inc. warrants to the original retail purchaser that the product purchased is free from defects in material and workmanship, and agrees to repair or replace, at Amax's option, any defective BLACK+DECKER™ branded under cabinet lighting product (3) years from the date of purchase. Warranty is not transferable. Proof of purchase date required. This warranty covers only damage resulting from defects in material or workmanship; it does not cover conditions or malfunctions resulting from normal wear, neglect, abuse, accident, or repairs attempted or made by other than our national repair center or authorized warranty service centers. You are responsible for the costs of shipping the defective product to Amax Inc.

THIS WARRANTY IS THE EXCLUSIVE WARRANTY OF AMAX INC., AND IS IN LIEU OF ALL OTHER EXPRESS WARRANTIES INCLUDING, BUT NOT LIMITED TO, IMPLIED WARRANTIES OF MERCHANTABILITY OR FITNESS FOR A PARTICULAR PURCHASE. AMAX INC. SHALL NOT BE LIABLE FOR ANY DIRECT, INDIRECT, INCIDENTAL, OR CONSEQUENTIAL DAMAGES.

Some states and countries do not allow the exclusion or limitation of incidental or consequential damages, so the above limitations or exclusions may not apply to you. This warranty gives you specific legal rights, and you may also have other rights which vary from state to state and country to country. For information on our warranty claim procedure, please contact us at 855-784-4322.

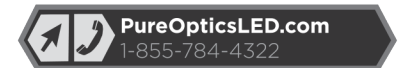
Latin America: This warranty does not apply to products sold in Latin America. For products sold in Latin America, check country specific warranty information contained in the packaging, call the local company, or see the website for warranty information.



Manufactured by:
Amax Incorporated East Greenwich, RI 02818
Under license from The Black and Decker Corporation USA and Canada Only

En México Importado por: Black & Decker S.A. de C.V. Avenida Antonio Dovali Jaime # 70 Torre B Piso 9 Colonia La Fe, Santa Fe, Delegación Alvaro Obregón, México D.F. 01210 • R.F.C.: BDE810626-1W7 • Contendio 2 piezas

Black+Decker and the Black+Decker logo are trademarks of The Black+Decker Corporation and are used under license. All rights reserved. Product in this box may differ slightly from that pictured. Not all accessories shown in photography are included in this package.



SAFETY GUIDELINES - DEFINITIONS

It is important for you to read and understand this manual. The information it contains relates to protecting YOUR SAFETY and PREVENTING PROBLEMS. The symbols below are used to help you recognize this information.

⚠ DANGER: Indicates an imminently hazardous situation, which if not avoided, will result in death or serious injury and/or property damage.

⚠ WARNING: Indicates a potentially hazardous situation which, if not avoided, could result in death or serious injury and/or property damage.

⚠ CAUTION: Indicates a potentially hazardous situation, which if not avoided, may result in minor or moderate injury and/or property damage.

NOTICE: Used without the safety alert symbol indicates potentially hazardous situation which, if not avoided, may result in property damage.

IMPORTANT SAFEGUARDS

BLACK+DECKER LED Under Cabinet Lights are intended for indoor home and office use and have not been tested for operation at different voltages or use outdoors. Each of these misuses could damage the light and/or create unsafe operating conditions.

TO REDUCE THE RISK OF INJURY

Before any use, be sure everyone using this light reads and understands all safety instructions and other information contained in this manual.

⚠ CAUTION: Failure to comply with the recommendations outlined in this instruction manual will void warranty.

⚠ WARNING: Read all safety warnings and all instructions. Failure to follow the warnings and instructions may result in electric shock, fire, and/or serious injury.

SAVE ALL WARNINGS AND INSTRUCTIONS FOR FUTURE REFERENCE

⚠ WARNING: To reduce the risks associated with impact and hazardous voltage which, if not avoided, could result in death or serious injury and/or property damage.

- Use indoors and in dry locations only; keep all liquids away from the light.
- Avoid putting the light on an uneven surface to prevent toppling or damage.
- Do not alter or modify the light, ground plug, or polarized plug blades.
- Do not use light with other adapters or voltage supplies.
- Plug the light into grounded, polarized electrical outlet; contact a qualified electrician if a polarized outlet is not available.
- Do not use the light if the power cord or the enclosure is damaged.
- If an extension cord is used, ensure that it is properly rated for your application.
- Do not attempt to disassemble light; product is to be serviced by qualified service personnel only—there are no user serviceable parts inside.
- Always power off and unplug light before cleaning.
- Clean exterior only with a dry, clean cloth; do not immerse light in water to clean.
- Do not use force when adjusting light.
- Do not insert objects into light.
- If any irregularities are detected during use, turn off the switch and unplug the light.

⚠ WARNING: To reduce the risks associated with excessive heat and fire which, if not avoided, could result in death or serious injury and/or property damage.

- Avoid usage in high temperature areas.(104°F/40°C)
- Avoid putting light next to heater.
- Lights should not be covered with flammable objects (cloth, paper, etc.)

⚠ CAUTION: To reduce the risks associated with environmental contamination which, if not avoided, could result in minor or moderate injury:

- Dispose of task lights in accordance with applicable local government regulations.

⚠ WARNING

- This device may not cause harmful interference.
- This device must accept any interference received, including interference that may cause undesired operation.

INTENDED USE: BLACK+DECKER LED Under Cabinet Lights are intended to provide task lighting indoors. Use in any other application has not been evaluated and may lead to an unsafe condition.

POLARIZED PLUGS: Polarized plugs (one blade is wider than the other) are used on equipment to reduce the risk of electric shock. When provided, this plug will fit a polarized outlet in only one way. If the plug does not fit fully into the outlet, reverse the plug. If it still does not fit, contact a qualified electrician to install the proper outlet. Do not change the plug in any way.

POWER ADAPTER STANDARDS: Input — 115V/0.25A; Output — 24VDC/1A

FUNCTIONAL DESCRIPTION

A1 9" Light Bar 2,700K/360lm or 4,000K/380lm 	B Control Box 			
C 4" Jumper Wire 	D 12" Jumper Wire 	E 30" Jumper Wire 	F 72" Jumper Wire 	G Nylon Ties
H AC Adapter 	I Bar Mounting Clips 	J Wire Clips 	K Jumper Extender 	L Mounting Screws (Optional)

CATALOG NO.	A1	A2	B	C	D	E	F	G	H	I	J	K	L
LEDUC9-5WK	2	3	1	3	1	4	1	4	1	16	20	2	32
LEDUC9-3WK	2	1	1	3	1	2	0	4	1	10	12	1	18
LEDUC9-1WK	1	0	1	1	1	1	0	4	1	4	6	1	8
LEDUC9-1W	1	0	0	1	1	1	0	2	0	4	4	1	6
LEDUC9-5CK	2	3	1	3	1	4	1	4	1	16	20	2	32
LEDUC9-3CK	2	1	1	3	1	2	0	4	1	10	12	1	18
LEDUC9-1CK	1	0	1	1	1	1	0	4	1	4	6	1	8
LEDUC9-1C	1	0	0	1	1	1	0	2	0	4	4	1	6

Powering On/Off

Using the Power Button: Press the power button located on the light bar once to turn the lights on. To turn off, press the power button again. (See **FIG. 1**)

Using the Motion Sensor: Ensure that your hand is within at least 2" of the motion sensor on the mounted control box. Wave your hand in any direction underneath the control box to turn the power on and/or off. (See **FIG. 2**)

Using the Dimmer

There are ten (10) preset lighting levels that can be adjusted with the dimmer button. To select your lighting level, ensure that the system is already powered on. Hold down the button to change the lighting level and/or switch between the presets. (See **FIG. 1**)

NOTE: This lighting system has a memory function that will use the last selected brightness level the next time it is powered on.

Using the Timer

This lighting system is equipped with an optional auto shutoff timer switch that will power the unit off after three (3) hours. To activate, switch to the "on" position. To disable, switch to the "off" position. (See **FIG. 3**)

ACCESSORIES

The following accessories are available for purchase:

- 108" Stove & Sink Jumper Wire (LEDJUMP108) — See **FIG. 4**
- Magnets (LEDMAGMT) — See **FIG. 5**

CONFIGURATION OPTIONS

Split Configuration: For layouts where preferred power source is centrally located within cabinets/mounting surfaces. (See **FIG. 6**)

Continuous Configuration: For layouts where preferred power source is on either side of cabinets/mounting surfaces. (See **FIG. 7**)

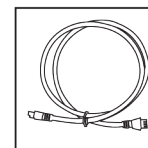


FIG. 4

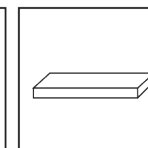


FIG. 5

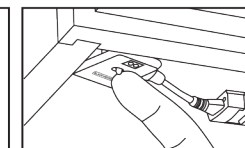


FIG. 3

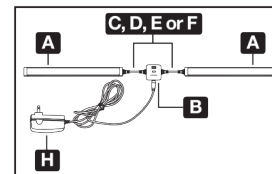


FIG. 6

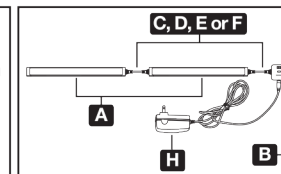
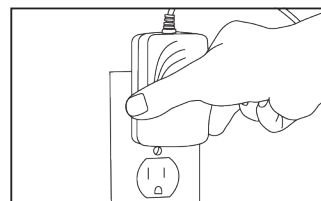


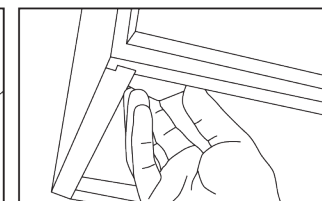
FIG. 7

STEP-BY-STEP INSTALLATION

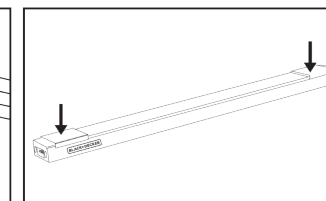
For an instructional video, please visit PureOpticsLED.com



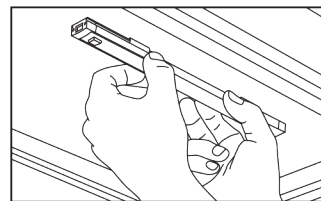
1. Select plug location



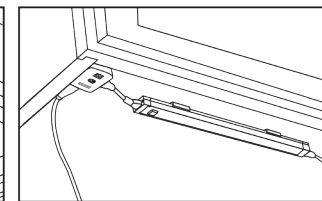
2. Select location of motion sensor and mount control box using Tool-Free application



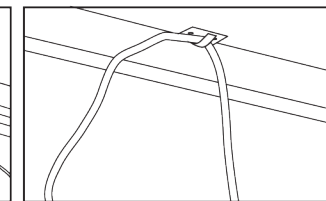
3. Slide two (2) bar mounting clips on to each light bar



4. Mount light bars using Tool-Free or Screw-In application or magnets applied in previous step



5. Using jumper wires, connect control box to first light bar(s) and light bars to each other. Connect AC adapter to control box



6. Use wire clips and/or zip ties to hide all loose wires. For mounting wire clips, use Tool-Free or Screw-In application

Free Manuals Download Website

<http://myh66.com>

<http://usermanuals.us>

<http://www.somanuals.com>

<http://www.4manuals.cc>

<http://www.manual-lib.com>

<http://www.404manual.com>

<http://www.luxmanual.com>

<http://aubethermostatmanual.com>

Golf course search by state

<http://golfingnear.com>

Email search by domain

<http://emailbydomain.com>

Auto manuals search

<http://auto.somanuals.com>

TV manuals search

<http://tv.somanuals.com>