

**Bolt**<sup>™</sup>

*Inspiration strikes*

**PP-310**  
**CYCLONE**  
**BATTERY PACK**

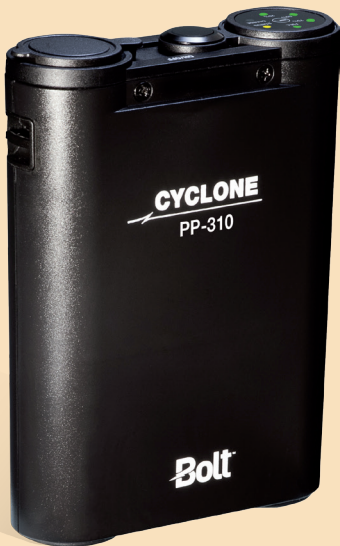
**User's Manual**





Copyright © 2013 Gradus Group

Bolt and other names of Bolt products are trademarks of Gradus Group. Other product and corporate names mentioned herein are trademarks of their respective holders.



## Introduction

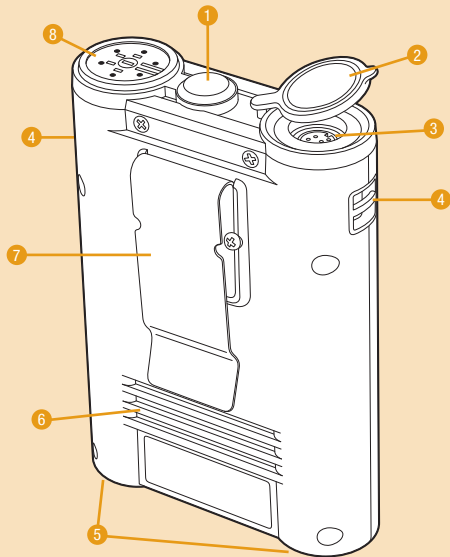
Thank you for choosing the Bolt Cyclone PP-310 power pack. This professional lithium-ion (Li-ion) battery pack powers a wide range of flash units. You'll never miss an important moment when you're using the Cyclone—this slender power pack offers speed and reliability, so that you can always make the most of your time.

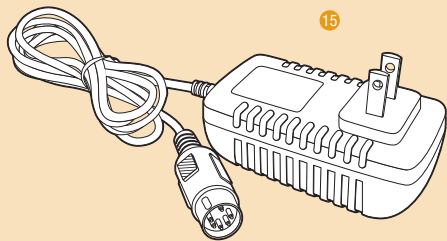
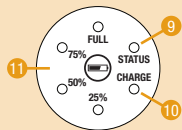
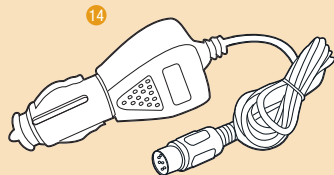
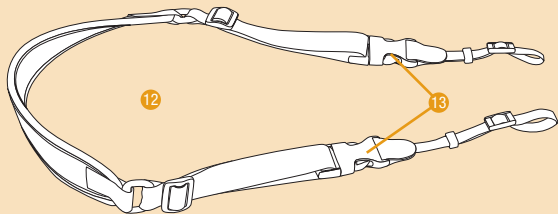
Outstanding features include:

- Lightning-fast recycle time of one second with popular flash units such as the Canon Speedlite 600EX-RT, Nikon SB-910 AF Speedlight, and Sony HVL-F60M.
- Up to 500 flashes per charge at full power, and up to thousands in full automatic mode.
- Fast 2-hour charging time.
- Lightweight, compact, and durable build, featuring heat-resistant nylon housing.
- Compatibility with battery pack systems and accessories from popular brands such as Quantum, Lumedyme, Dynalite, and Impact.

# Overview

- 1 Power button
- 2 Multifunction socket cover
- 3 Multifunction socket
- 4 Shoulder strap lugs
- 5 Padded feet
- 6 Vent
- 7 Belt clip
- 8 Status, Charge, and battery indicator lights
- 9 Status LED
- 10 Charge LED
- 11 Battery LEDs
- 12 Shoulder strap
- 13 Shoulder strap quick release
- 14 DC car charger BO-1004
- 15 AC battery charger BO-1010





## Warnings



- Do not disassemble or attempt to maintain this product yourself. There are high-voltage components inside the Cyclone. Contact can produce a dangerous electric shock.
- Keep out of reach of children.
- Do not touch the metal part of the multifunction socket.
- Do not use this product in flammable conditions, such as environments containing flammable gases or liquid chemicals.
- This product is not water-resistant. Keep it away from rain, snow, and humidity.
- Do not store or use this product at temperatures above 104°F (40°C).
- Do not connect this product to a charger other than the included AC or DC charger.
- To avoid overheating and damaging your flash unit, please wait for at least 10 minutes after 40 continuous flashes at full power. The Cyclone has a much higher power output than the typical built-in battery of a flash unit. Refer to your flash unit's manual for information on its continuous full-power flash capacity and limitations.
- Remove any cable from the multifunction socket when the Cyclone is not in use or charging, and cover the socket firmly with the multifunction socket cover.
- Make sure the cable connected to the multifunction socket is firmly connected when using or charging the Cyclone.

## Charging Your Cyclone

The Cyclone offers a fast charging time of 2 hours and a charge-level indicator that's easy to read at a glance.

### **To charge your Cyclone with the included charger:**

Plug the charger unit into an AC outlet.

Plug the charger cable into the multifunction socket on the Cyclone.

Wait for all of the green battery LEDs to stop flashing and remain on.

### **To charge your Cyclone with the optional B0-1004 DC car charger:**

Plug the charger unit into a compatible charger socket (cigarette lighter) in a car or other vehicle.

Plug the charger cable into the multifunction socket on the Cyclone.

Charging is completed when all of the green battery LEDs stop flashing and remain on.

### **To get the maximum capacity from your Cyclone:**

Charge your Cyclone shortly before use to ensure that the pack retains the maximum charge. Lithium-ion batteries gradually lose their charge when not in use.

Charge your Cyclone at a moderate room temperature, and avoid storing it in hot environments between

charging and use. High temperatures can cause Lithium-ion batteries to drain more quickly when being stored.

**Note:** When charging the pack outside of the United States, plug adapters may be used to plug the charger into any 100-240 V AC power outlet.

**Reading the indicator lights while charging:**

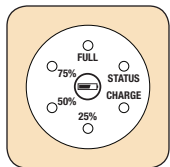
While your Cyclone is charging, its red Charge LED will remain on, and its four green battery LEDs will flash in sequence during the charging process. When the pack is fully charged, all four battery LEDs will remain on.

The Status LED remains off during charging. If the battery is not charged to its full capacity after 4 hours of continuous charging, the Status LED will flash to indicate that the battery is faulty or has reached the limit of its product life and can no longer hold a full charge. Please replace the Cyclone immediately if this occurs.

**Checking the Cyclone's charge level:**

When the Cyclone is not charging and is not connected to a flash unit, its level of charge can be checked by pressing the power button. The battery LEDs will illuminate to indicate the level of charge, as follows:





Battery LED 1 on: 25% or lower charge level

Battery LEDs 1-2 on: 25%-50% charge level

Battery LEDs 1-3 on: 50%-75% charge level

Battery LEDs 1-4 on: 75% or higher charge level

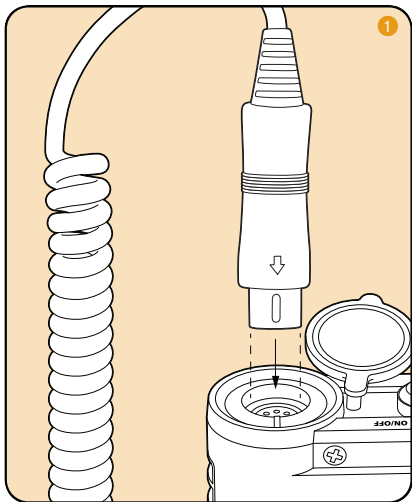
## Connecting Your Cyclone to Your Flash

You can use the Cyclone to power a wide range of flash units. To connect the Cyclone to your flash unit, you must use a compatible connection cable. Cables sold by some flash and battery pack manufacturers are interchangeable with Bolt cables, but other flash brands use a different connector type. Make sure you select the right one.

**Important! Load your flash unit with its standard batteries before connecting it to the Cyclone.**

Most compatible flash units require the standard batteries to be installed in order to power the computer functions that allow the flash to work.

You may need to set your flash unit to recycle by drawing power from the Cyclone only to avoid draining the installed batteries. Check your flash unit's manual for details on the relevant setting.

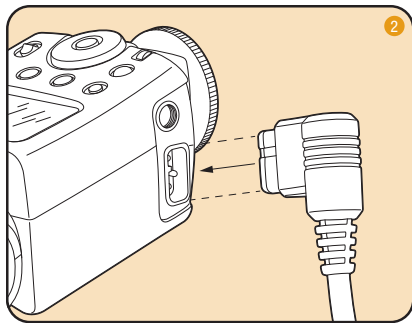


**To connect your Cyclone to your flash unit:**

1. Plug the 5-pin metal connector of the connection cable firmly into the multifunction socket of the Cyclone.

2. Plug the other end of the connection cable securely into the compatible power port on your flash unit.
3. Press the power button on the Cyclone and wait for the Status and battery LEDs to turn on.

When the Cyclone is charged, connected to your flash unit, and turned on, its Status LED will glow amber and the battery LEDs will glow green to indicate the charge level of the battery.



**To disconnect your Cyclone from your flash unit:**

1. Press the power button until the Status and battery LEDs turn off.
2. Unplug the connection cable from the battery pack.

**Note:** If you do not fire your flash for 60 minutes with the Cyclone connected, the battery pack will shut off automatically.

## Using Your Flash with Your Cyclone

Your Cyclone can recycle in just one second with many popular flash units to keep you shooting and ensure that you don't miss important moments. With your flash firing at full power, it can power up to 500 flashes, depending on the specific unit you're using. It can power thousands of shots in automatic mode with many flash units.

### **To get the best use out of your Cyclone:**

- Use in environments with moderate temperatures. When lithium-ion batteries get cold, they lose some of their ability to supply power. However, this does not mean that they have lost their charge, and they regain the ability to supply power when their temperature returns to a more moderate level.
- Don't fire more than 40 full-power flashes in a row. Exceeding the recommended number can overheat and even damage your flash. The Cyclone has a much higher power output than the typical built-in battery of a flash unit. Refer to your flash unit's manual for information on its continuous full-power flash capacity and limitations.

**Tip:** If you're shooting in a very cold environment, you can keep power flowing to your flash by alternating two Cyclones: Keep one pack indoors at room temperature or in an interior pocket next to your body while using the other pack, and then switch the two packs when the one in use starts losing its ability to power your flash.

### **Reading the indicator lights while using the Cyclone:**

When you're using your Cyclone, its amber Status LED will remain on to indicate that the flash is ready to fire. Its four green battery LEDs will indicate the level of charge as follows:

Battery LED 1 on: 25% or lower charge level

Battery LEDs 1-2 on: 25%-50% charge level

Battery LEDs 1-3 on: 50%-75% charge level

Battery LEDs 1-4 on: 75% or higher charge level

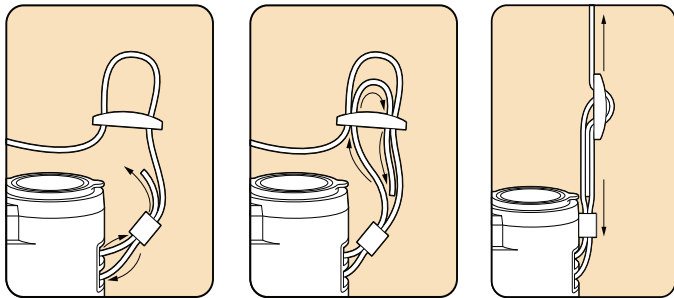
Battery LED 1 flashing: The Cyclone has been drained and needs to be charged.

Status LED flashing: The Status LED flashing indicates that the battery is overheated. Stop using the pack for at least 10 minutes to allow it to cool.

### **Carrying and wearing the Cyclone:**

The Cyclone is designed to be easy to carry and inconspicuous. Its light weight and compact design make it easy to wear for long periods, and its black finish and clean design will complement your professional attire. It also offers these convenient features:

- **Padded feet.** Two rubberized feet give the Cyclone stability and protection when you set it down.
- **Belt clip.** One of the easiest ways to carry the Cyclone is to attach it to your belt with the included clip. When you won't be carrying the pack on your belt, you can give it a cleaner profile by removing the clip. To do this, loosen the screws using a Phillips screwdriver, remove the clip, then tighten the screws to secure them.
- **Shoulder strap.** Thread the shoulder strap through the built-in lugs on the Cyclone and through the strap clips and buckles, as shown here. After threading it, pull it tight to take up any slack. Always make sure that your strap is attached securely since dropping the Cyclone can damage it.



## Troubleshooting

Problem	Solution
The Cyclone is charged and connected to a flash with a cable, but no indicator lights illuminate when you turn it on.	The cable is damaged or you are using the wrong cable.
The Cyclone is connected to the charger, and the Charge indicator light is flashing instead of showing a solid red light.	It will flash if the battery is not charged fully after 4 hours of continuous charging, which indicates an overused or faulty battery. In this case, please replace the battery immediately.
The Status indicator light is flashing.	The pack is overheated. Turn it off and wait for at least 10 minutes before using it again.
The Cyclone is charged and connected to a flash with a cable, but the flash does not fire.	Make sure you have AA or other internal batteries installed in the flash. These may be required for its computer functions to work.

## Customer Service

For customer service, please go to [www.boltflashes.com](http://www.boltflashes.com).

# Specifications

## **Cyclone Battery Pack PP-310:**

*Battery type:* Lithium-ion (Li-ion)

*Output:* 320V DC

*Input:* 11.1V

*Capacity:* 1900 mAh

*Recycle time with hot-shoe-mounted flash units:*  
approx. one second (at full flash power)

*Flashes per charge:*

Up to 500 (at full flash power)

*Operation environment working temperature range:*  
-4°F - 104°F (-20°C - 40°C)

*Operation environment working humidity:*  
85% or less

*Dimensions (including belt clip) (W × H × D):*  
4 × 5.9 × 1.7 inches (10.4 × 10 × 4.4 cm)

*Weight:* 14.1 ounces (400 grams)

## **AC battery charger BO-1010:**

*Compatible battery pack:* Cyclone PP-310

*Recharging time:* 2 hours for Cyclone PP-310

*Rated input:* 100-240 V AC

*Rated output:* 12.6 V DC

*Operation environment working temperature range:*  
-4°F - 104°F (-20°C - 40°C)

*Operation environment working humidity:*  
85% or less

*Dimensions (W × H × D):* 1.4 × 3.34 × 1.78 inches  
(35.5 × 85 × 45 mm)

*Weight:* 4.6 ounces (130 grams)

*Power cord length:* 58 inches (147 cm)

## **DC car charger BO-1004:**

*Compatible battery pack:* Cyclone PP-300 / PP-310

*Rated input:* 12-24 V DC

*Rated output:* 13.6 V DC 600mA

*Operation environment working temperature range:*  
-4°F-104°F (-20°C-40°C)

*Operation environment working humidity:* 85% or less  
*Dimensions (W × H × D):* 1.375 × 1.25 × 3.375 inches  
(35 × 32 × 86 mm)

*Weight:* 2.9 oz (82.2 grams)

*Cord length:* 57 inches (145 cm)



## ONE-YEAR LIMITED WARRANTY

Bolt provides a limited warranty to the original purchaser that this product is free from defects in materials and workmanship under normal consumer use for a period of one (1) year from the original purchase date or thirty (30) days after replacement, whichever occurs later. Bolt's responsibility with respect to this limited warranty shall be limited solely to repair or replacement, at Bolt's discretion, of any product that fails during normal consumer use. Inoperability of the product or part(s) shall be determined by Bolt. If the product has been discontinued, we reserve the right to replace it with a model of equivalent quality and function. To obtain warranty coverage, contact Bolt to obtain a return merchandise authorization ("RMA") number, and return the defective product to Bolt, along with the RMA number and proof of purchase. Shipment of the defective product is at the purchaser's own risk.

This warranty does not cover damage or defect caused by misuse, neglect, accident, alteration, abuse, improper installation or maintenance. EXCEPT AS PROVIDED HEREIN, BOLT MAKES NEITHER ANY EXPRESS WARRANTIES NOR ANY IMPLIED WARRANTIES, INCLUDING BUT NOT LIMITED TO ANY IMPLIED WARRANTY OF MERCHANTABILITY OR FITNESS FOR A PARTICULAR PURPOSE. This warranty provides you with specific legal rights, and you may also have additional rights that vary from state to state.



Copyright © 2013 Gradus Group

[www.boltflashes.com](http://www.boltflashes.com)

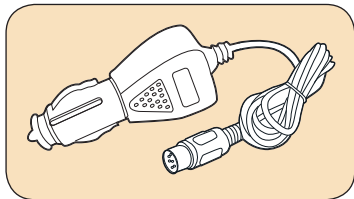
Made in China

## Compatible Devices and Accessories

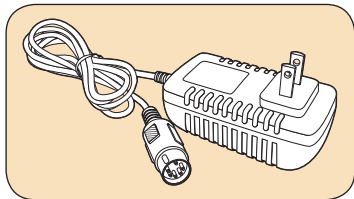
The Cyclone is compatible with a wide range of hot-shoe and handle-mount flash units. Make sure you select a connection cable that is compatible with your flash unit.

Many compatible accessories are also available from Bolt and other brands. Bolt connection cables are interchangeable with some other manufacturers' battery pack connection cables.

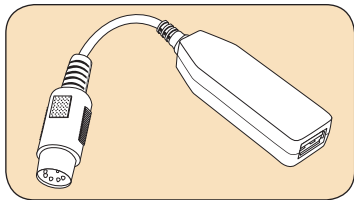
**These optional accessories are available from Bolt:**



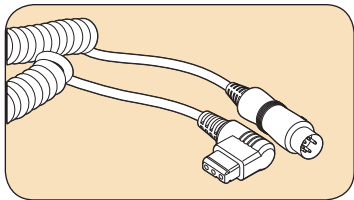
Bolt B0-1004 Replacement Car Charger



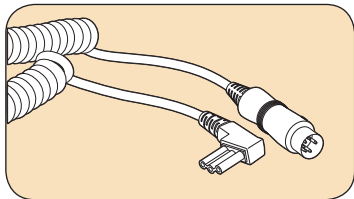
Bolt B0-1010 Replacement Charger



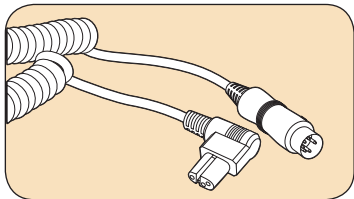
**Bolt USB-C Charger for Mobile Devices**



**Bolt BO-1001 CZ Canon flash cable**



**Bolt BO-1002 CKE Nikon flash cable**



**Bolt BO-1005 Sony Flash Cable**



**Bolt™**

[www.boltflashes.com](http://www.boltflashes.com)

Copyright © 2013 Gradus Group

## Free Manuals Download Website

<http://myh66.com>

<http://usermanuals.us>

<http://www.somanuals.com>

<http://www.4manuals.cc>

<http://www.manual-lib.com>

<http://www.404manual.com>

<http://www.luxmanual.com>

<http://aubethermostatmanual.com>

Golf course search by state

<http://golfingnear.com>

Email search by domain

<http://emailbydomain.com>

Auto manuals search

<http://auto.somanuals.com>

TV manuals search

<http://tv.somanuals.com>