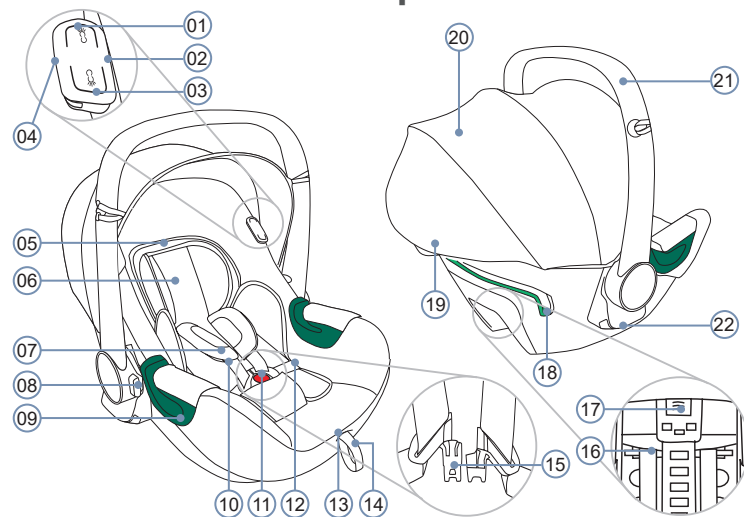


## 2. Product description



- |                                |                            |
|--------------------------------|----------------------------|
| 01 Top button                  | 12 Lap belt                |
| 02 USB-C charging connection   | 13 Adjustment button       |
| 03 Bottom button               | 14 Adjustment belt         |
| 04 Red LED                     | 15 Buckle tongues          |
| 05 Headrest                    | 16 Shoulder straps         |
| 06 Seat reducer                | 17 Release button          |
| 07 Shoulder pad                | 18 Light-green belt holder |
| 08 Swivel button               | 19 Grey release button     |
| 09 Dark-green belt guides      | 20 Sunshade                |
| 10 Shoulder strap              | 21 Handle                  |
| 11 Harness buckle (red button) | 22 Hold points             |

2000035156\_A6

**BRITAX RÖMER Child Safety EMEA**  
www.britax-roemer.com | contact@britax.com

## 1. About this document

**WARNING!** This operating manual is a component of the product and contributes to its safe use. Non-compliance may lead to serious or even fatal injuries. If in doubt, do not use product and immediately contact your retailer.

- ▶ Read operating instructions.
- ▶ Keep with the product for reference.
- ▶ If the product is given to third parties, include the operating instructions with the product.

### Contact information

If there are any questions, please get in touch.

**BRITAX RÖMER Child Safety EMEA**  
www.britax-roemer.com  
hello@britax-roemer.com

**BRITAX RÖMER Kindersicherheit GmbH**  
Theodor-Heuss-Strasse 9  
89340 Leipheim  
Germany

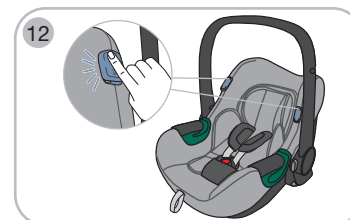
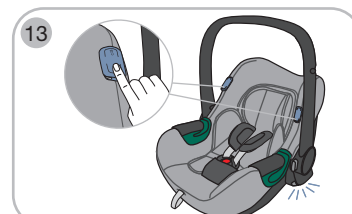
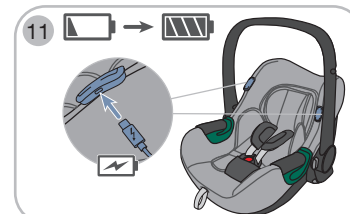
**BRITAX Excelsior Limited**  
1 Churchill Way West  
Andover  
Hampshire SP10 3UW  
United Kingdom

**BRITAX Nordiska Barn AB**  
Jörgen Kocksgatan 4  
SE-211 20 Malmö  
Sweden



+49 (0) 8221 3670 199

+44 (0) 1264 386034



### Handle

You can engage the handle in three positions: A, B and C:

- A - For carrying and for transport in your car.
- B - For placing your child inside
- C - For setting the infant carrier down safely outside the car.

### Adjust handle 1

- ▶ Hold down both swivel buttons.
- ▶ Move handle to desired position.
- ▶ Release swivel button.
- ▶ Ensure that the handle is locked in place.

### Seat reducer

Use the seat reducer when your child baby is still very small.

### Insert seat reducer 2

- ▶ Press red button to open the harness buckle.
- ▶ Place seat reducer in the infant carrier.
- ☞ The part filled with the foam blocks must be facing downwards.
- ▶ Thread the lower part of the seat reducer underneath the shoulder straps.
- ▶ Make sure that the seat reducer is in contact with the backrest of the infant carrier.

### Shoulder straps

A properly adjusted headrest ensures optimal protection for the child your infant carrier. The headrest is correctly positioned when the outlet slots of the shoulder straps are roughly two finger-widths (25 mm) below the child's shoulders.

### Loosening the shoulder straps 4

- ▶ Hold adjustment button down.
- ▶ Pull both shoulder straps forwards.
- ▶ Release adjustment button.

### Adjust shoulder straps 3

- ▶ Press red button to open the harness buckle.
- ▶ Press and slide the release button on the shoulder straps.
- ☞ The release button is on the back of the infant carrier.
- ☞ The outlet slots for the shoulder belt must be roughly two finger-widths (25 mm) below the child's shoulders.
- ▶ Ensure that adjustment button on the shoulder straps is locked in place.

### Tighten shoulder straps 5

- ▶ Pull adjustment belt out straight.
- ☞ Do not pull adjustment belt upwards or downwards.

### Buckle child in

- ▶ Loosen the shoulder straps. See chapter "Shoulder belt" page 1. 4
- ▶ Press red button to open the harness buckle. 6
- ▶ Move harness buckle forwards.
- ▶ Place child in final carrier.
- ☞ Avoid thick clothing under the belt.
- ▶ Pass shoulder straps over the child's shoulders.

**WARNING!** Ensure that the shoulder straps are not twisted or reversed.

- ▶ Bring both buckle tongues together. 7

- ▶ Lock buckle tongues in harness buckle.
- ☞ Buckle tongues audibly lock.

- ▶ Pull adjustment belt out straight. 5
- ☞ Do not pull adjustment belt upwards or downwards.
- ☞ Place shoulder straps tight to the child's body.

**WARNING!** Ensure that the hip straps are positioned as low as possible over your child's hips.

### Unbuckle child 8

- ▶ Press red button to open the belt lock.
- ▶ Remove child.

### Sunshade

The sunshade protects your child's head from sunlight. It can be folded open and closed with the handle.

### Remove sunshade 9

- ▶ Release push buttons on the side.
- ▶ Remove elastic seam edge.
- ▶ Hang reference loops on both sides of the handle.
- ▶ Attach sunshade hooks.

### Attach sunshade 10

- ▶ Attach reference loops left and right of the handle.
- ▶ Pull the elastic seam over the head end of the infant carrier.
- ▶ Secure the elastic seam at the side with the fasteners.

### Charge battery 11

☞ Only available for BABY-SAFE iSENSE.

**WARNING!** Risk of explosion and acid burn. Unintended use can lead to damage to the battery.

- ▶ Do not immerse battery in water.
- ▶ Keep battery away from fire.
- ▶ Protection battery against high temperatures. Note the recommended use and storage temperatures.
- ▶ Never remove, modify or replace battery. It can explode or release poisonous substances.
- ▶ If the battery is damaged or has deformations or cracks, do not dismantle it or modify its structure.
- ▶ If the battery loses electrolytes, avoid touching the extremely corrosive liquid. If there is contact with the eyes or skin, see a doctor.

**Fully charge the battery before the first use.** The first charging process enables the light functions. Use the charging cable provided when charging the battery. This guarantees the stated life of the battery. Only charge the battery in ambient temperatures of +10 to +40° C. Do not insert foreign objects into the charging socket. The battery has a life of at least 500 charge cycles.

- ▶ Connect charging cable to one of the two USB-C charging connections.
- ☞ Each control element has a USB-C charging connection.

**WARNING!** Risk of strangulation. Do not lead the charging cable across the child seat. Lead the charging cable away from the child seat.

- ▶ Connect charging cable to a 5V USB adapter.
- ☞ If the red LED is permanently on, the battery is charged.
- ☞ If the red LED is no longer on, the battery is fully charged.

- ▶ Remove charging cable and store out of reach of children (e.g. in the glove compartment).

- ▶ Recharge the battery as soon as the charge level is low.

- ☞ You can check the charge level. Press any button. If the red LED slowly flashes three times, the charge level capacity is low.
- ☞ The interior lighting, the installation light and the safety light can be used during charging.

### Interior lighting 12

- ☞ Only available for BABY-SAFE iSENSE.
- ☞ Operation of the BABY-SAFE iSENSE differs from the DUALFIX iSENSE. The interior lighting can be controlled manually both with the left and right

control element. In addition, delayed switching-off can be activated. The light switches off automatically after a few minutes.

### Switch light on and off

- ▶ Briefly press the top button.
- ☞ Light switches on.
- ▶ Briefly press the top button again within a few minutes.
- ☞ Brightness is increased.
- ☞ The brightness can be increased twice. Pressing the top button again switches off the light.
- ☞ If the light is on and you press the top button again after a few minutes, the light goes out.

### Activate delayed switching on

- ▶ Hold down the top button until the light flashes once.
- ☞ Delayed switch-off is enabled.
- ☞ The light switches off automatically after a few minutes.

### Installation and safety light 13

- ☞ Only available for BABY-SAFE iSENSE.
- ☞ Automatic mode can be activated after the first charging.

The installation light aids with the installation of the product. You are visible to other drivers with this safety light. Both lights are switched on and off automatically by sensors. The sensors react to movement, darkness and to the compatible station FLEX BASE iSENSE, as well as to compatible BRITAX RÖMER adapters for the SMILE III pushchair.

### Activate automatic mode

- ▶ Briefly press the bottom button.
- ☞ Automatic mode is active.

- ☞ If you install the infant carrier with a 3-point seat belt, we recommend disabling automatic mode.

### Switch on light manually

You can switch on both the installation light and the safety light manually with the left and right control element. To be able to switch on the light manually, automatic mode must be active. As soon as you remove the child seat from a station or a pushchair, manual mode is disabled.

- ▶ Briefly press the bottom button.
- ☞ Safety light turns on.
- ☞ Installation light turns on.
- ▶ Briefly press the bottom button again.
- ☞ Safety light remains on.
- ☞ Installation light turns off.
- ▶ Briefly press the bottom button again.
- ☞ Safety light turns off.
- ☞ Installation light turns on.
- ▶ Briefly press the bottom button again.
- ☞ Manual mode is disabled.
- ☞ Automatic mode is active.

### Disable automatic mode

- ▶ Hold down the bottom button for two seconds.
- ☞ Automatic mode is disabled.
- ☞ Installation and safety light are disabled.

### Switch off installation and safety light manually

- ☞ See "Disable automatic mode".

## 3. Intended use

This product has been designed, tested and approved according to the requirements of the European Standard for Child Safety Equipment R129/03. This product may only be used to secure a child in the vehicle, in an aircraft or on a pushchair.

	Rear-facing	Never use the product forward-facing.
Body height	40 - 83 cm	
Body weight	Maximum 13 kg	



## Free Manuals Download Website

<http://myh66.com>

<http://usermanuals.us>

<http://www.somanuals.com>

<http://www.4manuals.cc>

<http://www.manual-lib.com>

<http://www.404manual.com>

<http://www.luxmanual.com>

<http://aubethermostatmanual.com>

Golf course search by state

<http://golfingnear.com>

Email search by domain

<http://emailbydomain.com>

Auto manuals search

<http://auto.somanuals.com>

TV manuals search

<http://tv.somanuals.com>