



Laser Printer P2500

Quick Setup Guide

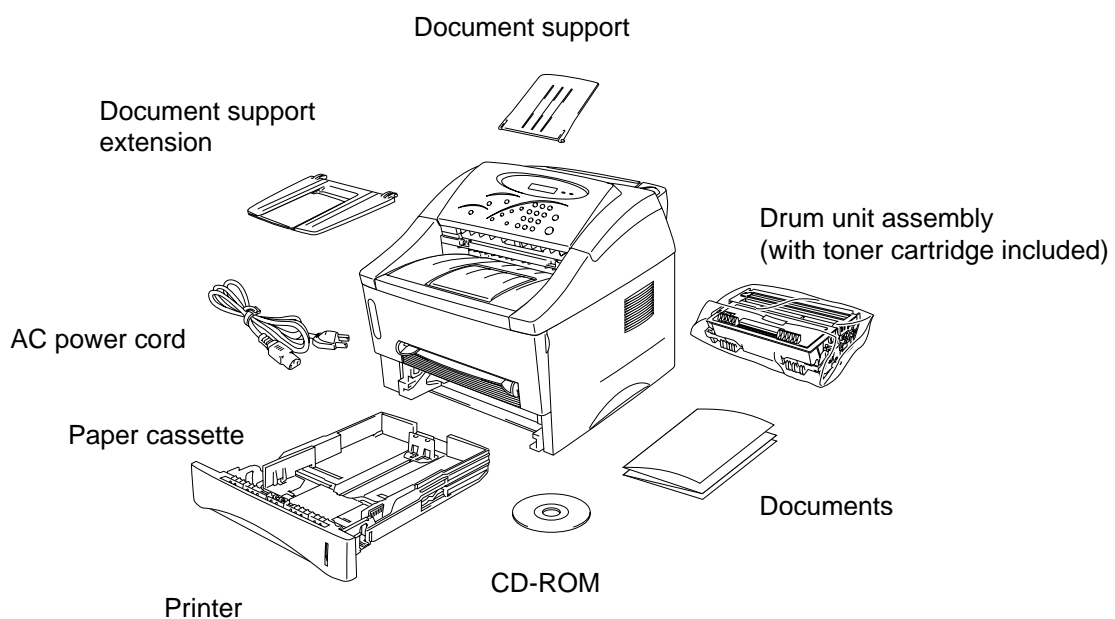
Read this Setup Guide before you set up the printer.

Before you can use the printer, you must set up the hardware and install the printer and scanner drivers.

- Identify the Operating System on your computer (Window[®] 3.1x, 95/98, NT[®] 4.0 or Macintosh)
- Follow the instructions in this guide for your operating system and cable interface.

Components

Components may differ from one country to another. Save all packing materials and the printer carton. They should be used when shipping the printer.



CD-ROM includes :

- Initial Setup instructions
- Printer and Scanner drivers
- Fonts
- User's Guide
- Instructional Video
- Other Software

For Windows[®] users only (Windows[®] 3.1x, 95/98 or NT[®] 4.0)

You can set up the printer easily by following the Initial Setup instructions on the CD-ROM.

Step 1 Insert the CD-ROM

1. Turn on the power to your PC. Insert the CD-ROM into the CD-ROM drive.

The opening screen will appear automatically in Windows[®] 95/98/NT[®]4.0.

If the screen does not appear, click Start and choose Run, enter the CD drive letter and type START.EXE.

If you are using Windows[®] 3.1x, click **Run** from the File Menu in the Program Manager, enter your CD drive letter and type START.EXE. For example:
D:\START.EXE

3. Select the language you want, then follow the instructions on the screen.

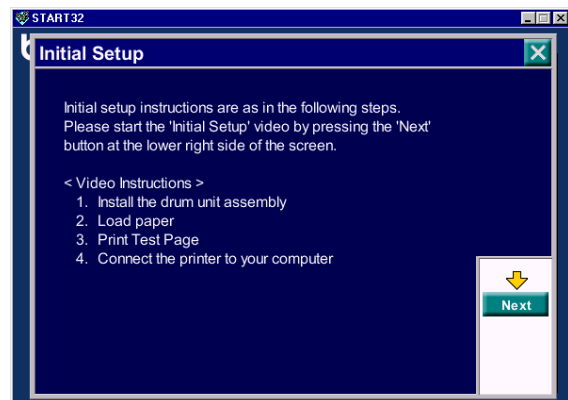


Step 2 Initial Setup

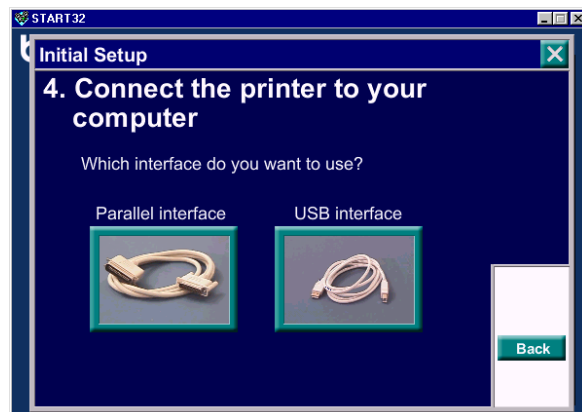
1. Click the **Initial Setup** button.



2. You can view the Initial Setup operations in the Instructional video

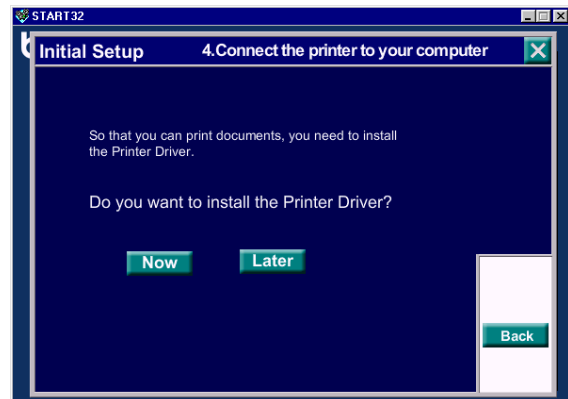


3. Click the interface cable you are going to use (Parallel or USB).

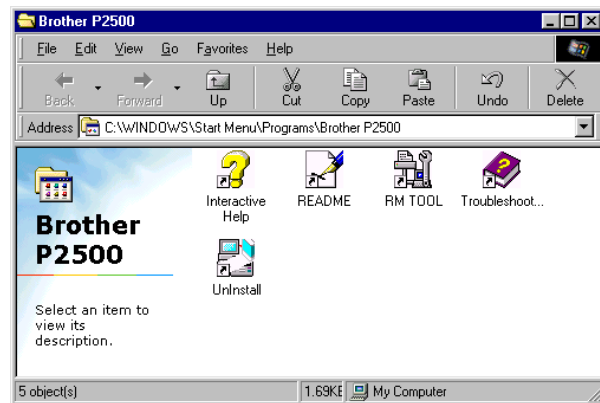


Step 3 Install the printer driver

1. If you click the **Now** button, you can install the printer and scanner drivers and Fonts immediately.



2. After the printer and scanner drivers have been installed, the P2500 window will appear. Follow the prompts on the screen to complete the installation.



If your printer is connected using a parallel interface cable, the setup is now completed. If you want to connect your printer using a USB interface cable, refer to '*For Windows 98 users with USB only*'.

For Windows[®] 98 users with USB only

The steps in this section are essential for USB interface cable users.

Steps 1 and 2 Follow the CD-ROM instructions on the beginning of these instructions.

Step 3 Install the Printer and Scanner drivers with the USB driver

1. Make sure that the printer power switch is on.
2. Connect the USB interface cable to your PC then connect it to the printer.
3. The "*Add New Hardware Wizard*" window will appear. Click the **Next** button.
4. Check "*Search for the best driver for your device*" and click the **Next** button.
5. Check "*Specify a location*" and remove the other check marks, then click the **Browse** button to locate the file.
6. Double click the CD-ROM icon and click on the **Win98usb** folder, then click **OK**.
7. Click the **Next** button.
8. Click the **Next** button.
The USB driver will be installed.

9. Click the **Finish** button.
Go to next stop for installing the scanner driver.

 10. Please repeat steps 3 to 9 to install the Scanner driver.

 11. Please repeat steps 3 to 8 to install the Printer driver.

 12. Select the **BRUSB USB Printer Port**

 13. Check **Yes** and click the **Finish** button.

 14. Select a language and click **OK** then click the **Finish** button.
- The setup is now completed.

For Macintosh users only

(iMac and Power Macintosh G3 with USB/The scanner driver worked on OS8.6)

You can setup the printer following the Initial Setup instructions on the supplied CD-ROM.

Step 1 Insert the CD-ROM

Turn on the power to your iMac or Macintosh G3. Insert the CD-ROM into the CD-ROM drive. This Window will appear automatically.

Step 2 Initial Setup

To view the Initial Setup operations in the Instructional video, click this icon.

Step 3 Install the printer driver and scanner drivers

To install the printer and scanner drivers, click the **Printer Driver Installer** icon, then click the **Scanner Driver Installer** icon . The setup is now completed.

Step 4 Select the printer

1. From the Apple menu, open the Chooser.
2. Click the HL-1200/MFL Pro you just installed to highlight it. On the right hand side of Chooser, click the printer to which you want to print. Close the Chooser.

Setup the Printer

Step 1 Install the drum unit assembly

1. Open the front cover.
2. Unpack the drum unit assembly. Rock it from side to side 5 or 6 times to distribute the toner evenly inside the cartridge.
3. Install the drum unit assembly into the printer.
4. Push it fully into the printer until it snaps into place.
5. Close the front cover.

Step 2 Load paper into the paper cassette

1. Pull the paper cassette completely out of the printer.
2. Slide the paper width and length adjusters to the paper size you want until they snap into a slot. Check they fit correctly into the slots.
3. Load paper into the paper cassette. Check that the paper is flat in the cassette.
4. Re-install the paper cassette into the printer.
5. Unfold the output tray extension flap and install the Document support and Document support extension.

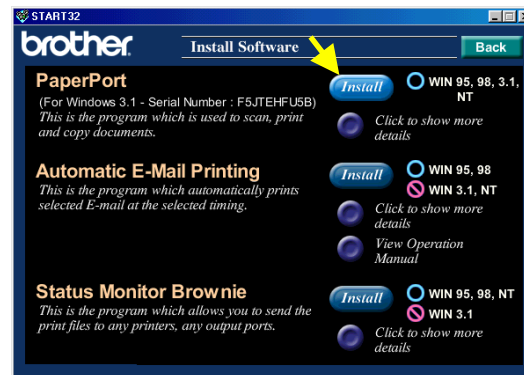
Installing the Scanner Utility (For Windows® users only)

Insert the CD-ROM, and select “Install Software” on the following screen.



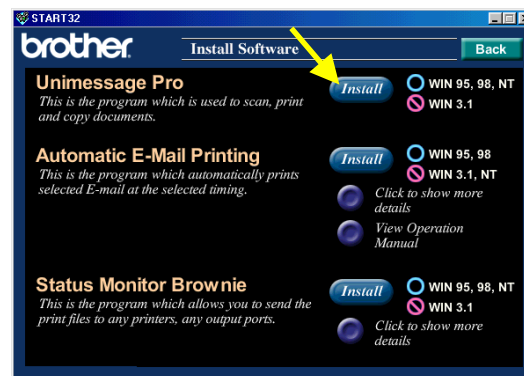
<For USA/CANADA>

Select the **PaperPort**® for Brother Software.



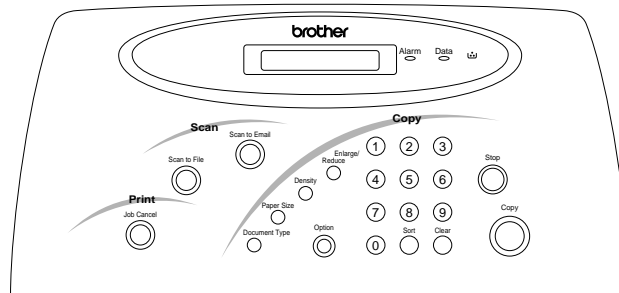
<For Europe >

Select the **Unimessage™ Pro Viewer** Software.



For more information, please see the User's Guide in the CD-ROM online Documentation.

Control panel operation



This section refers to the following LEDs on the printer control panel.

Alarm LED

The Alarm LED indicates a printer error status.

LED	Status
On ●	The printer has detected an error.

Refer to the 'Error Messages that Appear on the LCD panel' in Chapter 4.

Data LED

LED	Status
On ●	The printer is processing data in memory.
Blinking ★	The printer is receiving data from the computer.

LED

LED	Status
On ●	The toner cartridge is empty.
Blinking ★	The toner cartridge is nearly empty.

Replace the toner cartridge with a new one referring to Chapter 3 of the User's Guide.

How to copy

1. Insert the original document face down in the Document Feeder.
2. Select the copy settings you require by repeatedly pressing one of the following buttons until the option you want appears on the LCD. Repeat for each button for which you want to change the setting.

Enlarge/Reduce	Set the enlarge/reduce ratio for the copy.
Density	Set the copy contrast.
Document type	Sets the copy mode for the type of original document.
Paper size	When you change the size of paper in the cassette, press this button to select the size of printed paper you loaded.
Options	Pressing this button to change the layout of the copy on the printout.

3. Use the keypad to enter the number of copies.
4. For multiple copies, select the Sort button to select 'Sort' or 'Stack'.
5. Press the **Copy** button to start copying.

BUTTONS	Explanation
Clear	Returns all the copy settings, except the Paper size setting to the factory default settings.
Stop	Stops and cancels the copy operation in progress.
Job Cancel	Stops and cancels the printer operation in progress.
Scan to File	Scan the data of the original document into the viewer software on your PC.
Scan to Email	Scan a document as a data file in your E-mail application, setting it up automatically as a file attachment.

Quick Print Setup

(For Windows® users only)

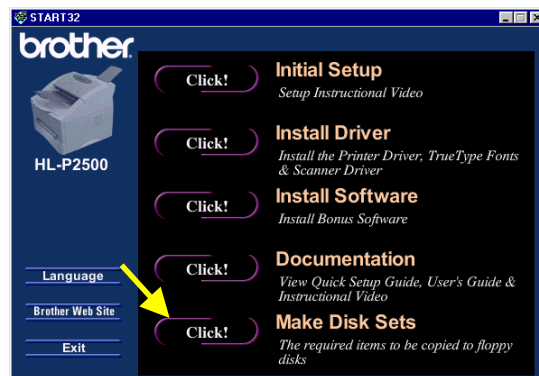


The Quick Print Setup utility allow you to make quick changes to frequently used driver settings without having to open the printer properties option. When the printer driver is selected, Quick Print Setup is launched automatically. You can change the settings by clicking the icon with the right mouse button. This utility is for Windows® 95/98/NT® 4.0 only. You cannot use it for Windows® 3.1x.

Make Disk Sets

If you don't have a CD-ROM drive, you can make Floppy Disks with other PC which has a CD-ROM drive.

Click the **Make Disk Sets** button, and follow the instructions on the screen.



Troubleshooting

Problem	Recommendation
Data is sent from the PC but the printer does not print and the Data LED is blinking.	<ul style="list-style-type: none"> • Check that the appropriate printer driver is selected.
The printer prints unexpectedly or it prints garbage data or PC scanning stops.	<ul style="list-style-type: none"> • Check that the printer cable is not too long. <ul style="list-style-type: none"> - We recommend you use a parallel cable of less than 2 metres (6.6 feet) in length. - Exchange it with another one. • Check that the printer cable is not damaged or broken. <ul style="list-style-type: none"> - Exchange it with another one. • Check if you are using a parallel interface switching device. <ul style="list-style-type: none"> - Remove it and connect your PC directly to your printer and try again. • Check that the printer is not connected to a parallel port that is also connected to a mass storage device or scanner. • Remove all other devices and connect the port to the printer only and try it again. <p><Print only problems></p> <ul style="list-style-type: none"> • In the device options tab in the printer driver, turn off printer status reporting. • Check that the appropriate printer driver is selected.
When you cannot scan	<ul style="list-style-type: none"> • Check that the printer cable (or USB cable) is connected securely. • Select P2500 from the application you are using. • When the P2500 does not appear in your application's printer selection, install the scanner driver again.

For Windows® users only

Problem	Recommendation
The printer cannot print. "There was an error writing to BRPRT: (or LPT1: or BRUSB: or BRLPT1: (NT only)) for the printer." error message displays on your PC.	<ul style="list-style-type: none">• Check that the printer is turned on.• Check that the front cover is completely closed.• Check that there is paper in the paper cassette or manual feed slot.• Check that the power plug is connected correctly.• Check that the printer cable is connected securely.• Check that the printer cable is not damaged or broken.<ul style="list-style-type: none">- Exchange it with another one.• Check if you selected another printer through an interface switching device.
The USB driver is installed, but it is unable to find the BRUSB:port	<ol style="list-style-type: none">1 Double-click the file "DeinsUSB.exe" in the Win98usb directory of the CD-ROM.2 Turn the printer off then turn it on again.3 The "Add New Hardware Wizard" will be launched again. Follow the instructions in the Wizard to re-install the driver.

For Macintosh users only

Problem	Recommendation
This printer does not appear in Chooser.	<ul style="list-style-type: none">• Check that the printer is turned on.• Check that the USB interface cable is connected correctly.• Check that the printer driver is installed correctly.

Free Manuals Download Website

<http://myh66.com>

<http://usermanuals.us>

<http://www.somanuals.com>

<http://www.4manuals.cc>

<http://www.manual-lib.com>

<http://www.404manual.com>

<http://www.luxmanual.com>

<http://aubethermostatmanual.com>

Golf course search by state

<http://golfingnear.com>

Email search by domain

<http://emailbydomain.com>

Auto manuals search

<http://auto.somanuals.com>

TV manuals search

<http://tv.somanuals.com>