

Quick Reference Manual 5604



Congratulations upon your selection of this CASIO watch.

Bluetooth® is a registered trademark or trademark of Bluetooth SIG, Inc. of the United States.

This product has a Mobile Link function that lets it communicate with a Bluetooth® capable phone to perform automatic time adjustment and other operations.

- This product complies with or has received approval under radio laws in various countries and geographic areas. Use of this product in an area where it does not conform to or where it has not been approved under applicable radio laws may be punishable under local laws. For details, visit <https://world.casio.com/ce/BLE/>.
- Use of this product inside of an aircraft is restricted by the aviation laws of each country. Be sure to obey instructions provided by flight personnel concerning use of devices such as this product.

Visit the website below for the operation manual (Operation Guide) of this watch.
<https://world.casio.com/manual/wat/>



Using the Watch

Charging

Remove the watch from your wrist and place it in a brightly lit area.

- The watch may become hot when exposed to light for charging. Take care to avoid burn injury.
- Avoid charging in locations where it is very hot.

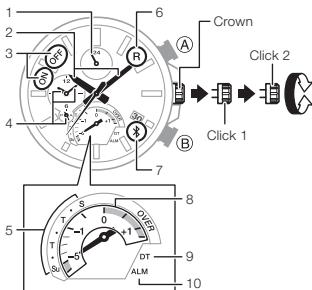
Power Saving

- Leaving the watch in a dark location for about one hour between the hours of 10 p.m. and 6 a.m. will cause the second hand to stop at 12 o'clock.
- Leaving the watch in a dark location for about one week will cause all hands to stop.

Battery Alerts

- Low Battery
Second hand jumps every two seconds (Low Battery Alert).
- Dead Battery
All hands stopped.

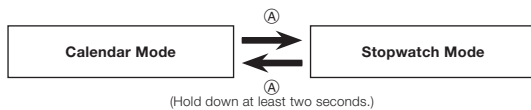
General Guide



1. 24-hour hand: Current time
2. Hour and minute hands: Current time
3. Alarm status: ON, OFF
4. Dual Time dial
5. Day of the week: Su, •, T, •, T, •, S
6. Mobile phone connection standby: R
7. Bluetooth connection:
8. Lap time achievement area (Stopwatch)
9. Dual Time: DT
10. Alarm: ALM

* Hold down (B) for at least two seconds to establish a Bluetooth connection with a phone.

Selecting a Mode



Setting the Time

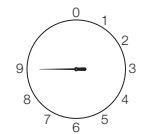
1. Pull the crown out to the second click.
 - This enables setting of the hour and minute.
2. Rotate the crown to change the current hour and minute setting.
3. Press (A).
 - This enables the year 10's digit setting.
4. Rotate the crown to change the year 10's digit setting.

Year 10's Digit Setting



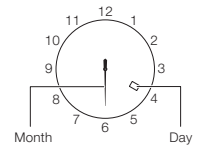
5. Press (A).
 - This enables the year 1's digit setting.
6. Rotate the crown to change the year 1's digit setting.

Year 1's Digit Setting



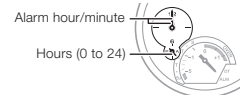
7. Press (A).
 - This enables the month setting.
8. Rotate the crown to change the month setting.
9. Press (A).
 - This enables the day setting.
10. Rotate the crown to change the day setting.
11. After the settings are the way you want, push the crown back in.

Month Setting



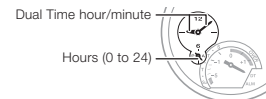
Changing the Alarm Time Setting

1. Pull the crown out to the first click.
2. Press (A).
3. Press (B) to toggle the alarm between on and off.
4. Rotate the crown to move the hands to the time you want to set.
5. After the setting is the way you want, push the crown back in.



Changing the Dual Time Setting

1. Pull the crown out to the first click.
2. Rotate the crown to move the hands to the time you want to set.
3. After the setting is the way you want, push the crown back in.



Specifications

Accuracy at Normal Temperature:	±15 seconds per month average when time adjustment by communication with a phone is not possible.
Timekeeping:	Hour, minute (hands move at 10-second intervals), second; date, day of the week Calendar system: Full-auto calendar from 2000 to 2099 Others: Dual time (hour, minute, 24-hour timekeeping)
Stopwatch:	Measuring unit: 1 second Measuring capacity: 23:59'59" (24 hours) Measurement functions: Elapsed time, Flyback timing, Direct start
Alarm:	Setting units: Hour, minute Beeper: 10 seconds
Mobile Link Functions:	Auto Time Correction Time setting adjusted automatically at preset time. One-touch Time Correction Manual connection and time adjustment Phone finder Watch operation sounds the alert sound of the mobile phone. World Time Current time for approximately 300 cities selected for the watch Home Time/World Time swapping Auto summer time switching Automatic switching between standard time and summer time Alarm Setting Hand position correction Data Communication Specifications Bluetooth® Frequency Band: 2400MHz-2480MHz Maximum Transmission: 0 dBm (1 mW) Communication range: 2 meters max. (depends on environment)
Other:	Power Saving, Low Battery Alert
Power Supply:	Solar panel and 1 rechargeable battery
Battery Operating Time:	Approximately 5 months Conditions Not exposed to light under the conditions below. <ul style="list-style-type: none"> • Auto time adjustment: 4 times/day • Alarm: Once (10 seconds)/day • Power Saving: 6 hours/day

Specifications are subject to change without notice.

Free Manuals Download Website

<http://myh66.com>

<http://usermanuals.us>

<http://www.somanuals.com>

<http://www.4manuals.cc>

<http://www.manual-lib.com>

<http://www.404manual.com>

<http://www.luxmanual.com>

<http://aubethermostatmanual.com>

Golf course search by state

<http://golfingnear.com>

Email search by domain

<http://emailbydomain.com>

Auto manuals search

<http://auto.somanuals.com>

TV manuals search

<http://tv.somanuals.com>