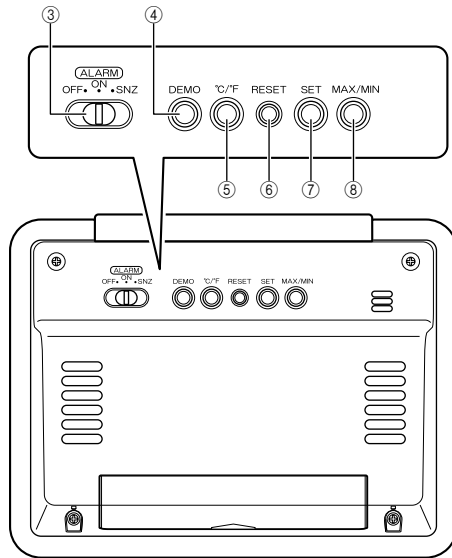
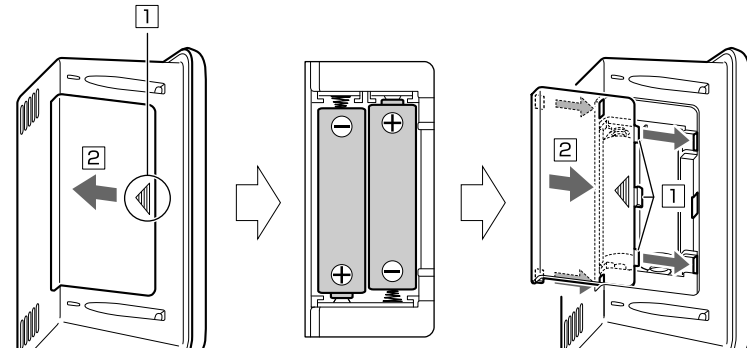
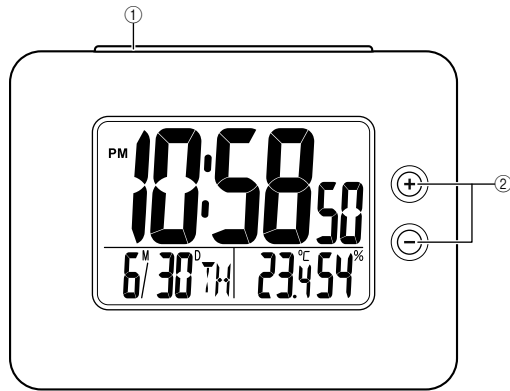


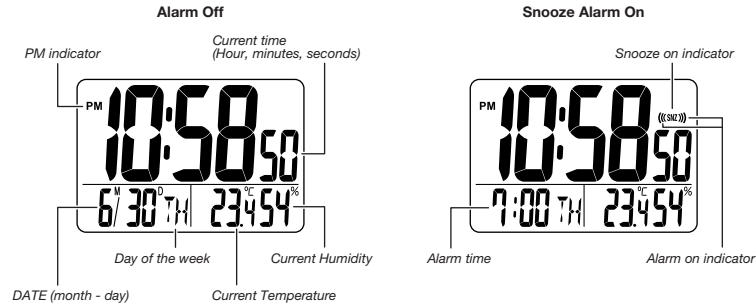
# Operation Guide DQ-982N



# Operation Guide DQ-982N

CASIO®

- A sticker is affixed to the glass of the clock when you purchase it. Be sure to remove the sticker before using the clock.
- Depending on the clock model, the configuration of your clock may differ somewhat from that shown in the illustration.



## GENERAL GUIDE

### ① SNOOZE/LIGHT button

- Press this button to illuminate the display for about five seconds.
- Pressing this button while the alarm is sounding stops the alarm.

### ② + (UP) / - (DOWN) buttons

Use these buttons to change the alarm time or the setting that is flashing on the display.

### ③ Alarm Mode selector

SNZ: Snooze alarm on  
ON: Alarm on  
OFF: Alarm off

### ④ DEMO button

Press this button to test the alarm sound.

### ⑤ °C/°F button

Press this button to toggle the temperature units between Celsius and Fahrenheit.

### ⑥ RESET button

Press this button to reset the clock after replacing its batteries.

### ⑦ SET button

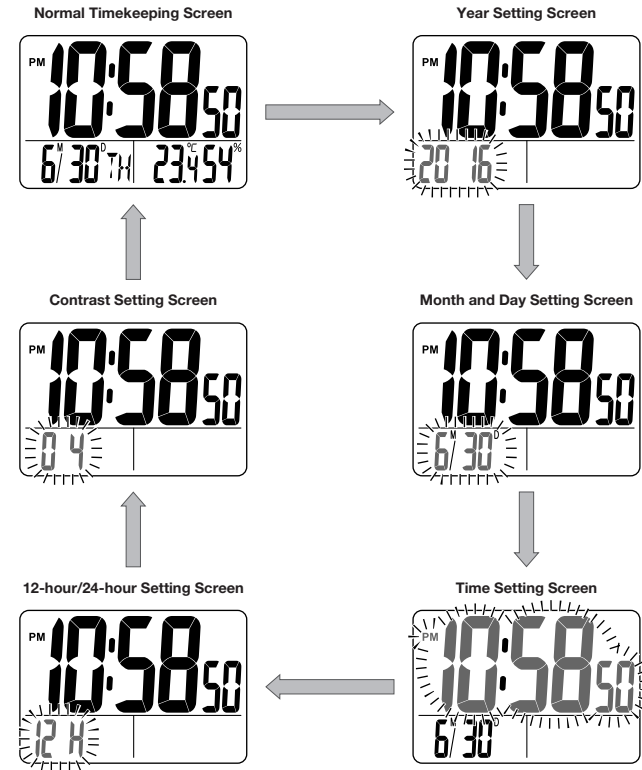
Use this button when setting the current time.

### ⑧ MAX/MIN button

Press this button to display the high and low temperature and humidity values.

## USING THE CLOCK

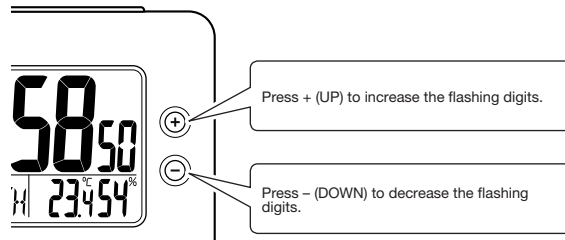
1. Press the **SET** button (⑦) to cycle through the setting screens as shown below.



# Operation Guide DQ-982N

CASIO®

2. While the screen you want is displayed, use the – (DOWN) and + (UP) buttons (2) to change the flashing digits.



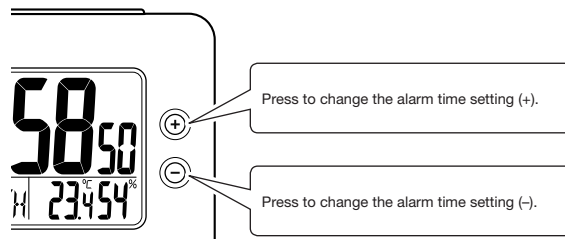
- Holding down + (UP) or – (DOWN) changes the flashing digits at high speed.
  - You can set the year in the range of 2000 to 2099. The day of the week is set automatically in accordance with the date setting.
  - Pressing + (UP) or – (DOWN) while the Time Setting Screen is on the display causes the seconds count to be reset to 00.
  - Each press of + (UP) or – (DOWN) while the 12-hour/24-hour Setting Screen is on the display toggles between 12-hour and 24-hour timekeeping.
  - You can set the contrast level in the range of 1 to 10.
3. After making the settings you want, use the **SET button** (7) to display the Normal Timekeeping Screen.
- The clock automatically returns to the Normal Timekeeping Screen if you leave a setting screen on the display for about three minutes without performing any operation.

## USING THE ALARM

The alarm sounds when the alarm time you set is reached. You can also use the **Alarm Mode selector** (3) to select the snooze alarm feature.

### Setting the Alarm Time

Use the – (DOWN) and + (UP) buttons (2) to set the alarm time. Pressing the – (DOWN) and + (UP) buttons (2) causes the alarm time to appear in place of the date on the display.



- Holding down + (UP) or – (DOWN) changes the digits at high speed.

## Turning the Alarm On and Off

Use the **Alarm Mode selector** (3) on the side of the clock to turn the alarm on and off, and to select the snooze feature.

Alarm Mode selector	Description
SNZ (Ⓜ)	The alarm sounds at the preset time for one minute, and seven more times every five minutes thereafter. Even if you stop the alarm by pressing the <b>SNOOZE/LIGHT button</b> (1), the alarm sounds again about five minutes later. <ul style="list-style-type: none"> <li>• The indicator (Ⓜ) flashes on the display to indicate that the snooze feature is activated.</li> </ul>
ON (Ⓜ)	The alarm sounds at the preset time for one minute.
OFF	The alarm does not sound.

- The alarm time appears in place of the date on the display whenever the **Alarm Mode selector** (3) is set to ON or SNZ.
- The volume of the alarm sound cycles through five levels as it sounds.

## Stopping the Alarm

- When alarm is sounding, press the **SNOOZE/LIGHT button** (1) to stop it. When the snooze feature is turned on, the alarm will sound again in about five minutes.
- To turn off the snooze feature, slide the **Alarm Mode selector** (3) to OFF.

## USING THE LIGHT

Pressing the **SNOOZE/LIGHT button** (1) turns on the light and illuminates the display for easy reading in the dark.

### Important!

- Overuse of the light can shorten battery life.

## ALL NIGHT LIGHT

ALL NIGHT LIGHT keeps the time easy to read, even in the dark. When the **Alarm Mode selector** (3) is in the ON or SNZ (snooze) position, the display is automatically illuminated with a dim light eight hours before the alarm time is reached.

## THERMOMETER AND HYGROMETER FUNCTIONS

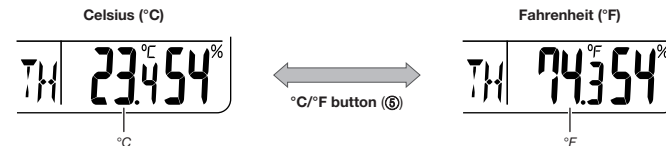
A built-in sensor measures temperature and humidity, and shows the measured value on the display. The readout from the temperature sensor can also be switched between Celsius (°C) and Fahrenheit (°F).

### Temperature Measurements

- The temperature display shows "LO" for temperatures below –19.9°C (–3.8°F) and "HI" for temperatures above 49.9°C (121.8°F).
- Though temperature readings are displayed up to 0°C (32°F) and greater than 41°C (105°F), note that such readings are actually outside the guaranteed temperature range of this clock.

### Switching between Celsius and Fahrenheit

- Push the **°C/°F button** (6) to select either Celsius (°C) or Fahrenheit (°F).
- Switching between Celsius and Fahrenheit causes current high temperature/humidity and low temperature/humidity memory contents to be cleared.



# Operation Guide DQ-982N

CASIO®

## Humidity Measurements

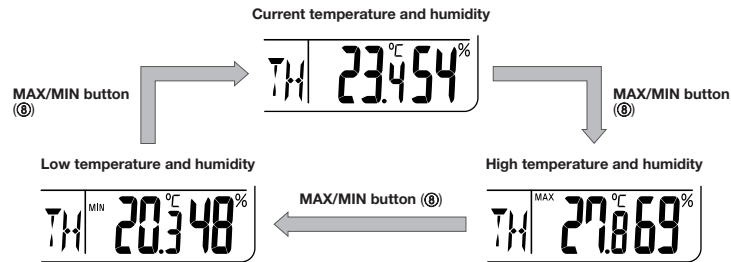
- The humidity display shows "LO" for humidity below 10% and "HI" for humidity above 90%.
- Whenever the current temperature is outside the range of 0°C to 49.9°C, the humidity display will show "--".

## Daily High Temperature/Humidity, Low Temperature/Humidity Memory

- The clock remembers the highest and lowest temperature and humidity readings for the current 24-hour day. Each press of the **MAX/MIN button** (Ⓞ) cycles between screens as illustrated below.
- Daily high and low temperature/humidity memory contents are cleared each day at midnight.

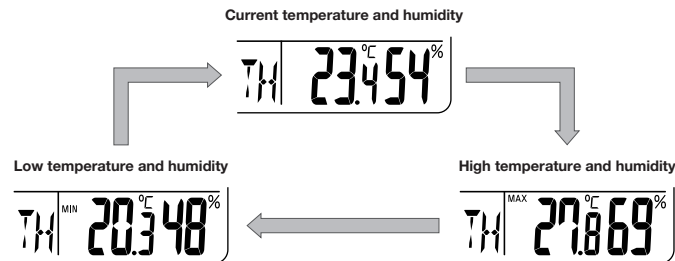
## Changing the Temperature/Humidity Display Screen

- Press of the **MAX/MIN button** (Ⓞ). Each press cycles between screens as shown below.



## Turning On Temperature/Humidity Screen Auto Cycling

- Hold down the **MAX/MIN button** (Ⓞ) for about one second. This will turn on temperature/humidity screen auto cycling, which causes the screen contents to cycle from one screen to the next at regular intervals.



- To turn off temperature/humidity screen auto cycling, press the **MAX/MIN button** (Ⓞ).

## BATTERY REPLACEMENT

Replace batteries whenever the display of the clock becomes dim and difficult to read.

1. Open the battery compartment cover as shown in the illustration.
2. Remove all of the old batteries.
3. Load a full set of new batteries. Make sure that their positive (+) and negative (-) ends face in the correct directions. If you load batteries incorrectly, they can burst and damage the clock.
4. Press the **RESET button** (Ⓞ).
5. Replace the battery compartment cover.

## Battery precautions

- Keep batteries out of the reach of small children. If a battery is accidentally swallowed, contact your physician immediately.
- Be sure to load the batteries with their positive (+) and negative (-) ends facing correctly.
- Never mix old and new batteries, or batteries of different brands.
- Never charge the batteries.
- Should batteries ever leak while in the clock, wipe out the fluid with a cloth, taking care not to let any get onto your skin.
- Replace the batteries at least once a year, even if the current batteries are working properly.
- The batteries that come with the clock lose some of their power during transport and storage.

## SPECIFICATIONS

**Accuracy at Normal Temperature:** ±60 seconds a month

**Calendar System:** Auto-calendar pre-programmed from the year 2000 to 2099

**Alarm:** Daily Alarm, Snooze Alarm (7 repeats)

**Thermometer Functions:** Measuring range: -19.9°C to 49.9°C (-3.8°F to 121.8°F)

Though temperature readings are displayed up to 0°C (32°F) and greater than 41°C (105°F), note that such readings are actually outside the guaranteed temperature range of this clock.

High/Low Temperature Memory, Celsius (°C)/Fahrenheit (°F) switching

**Temperature Sensor Precision:** ±2°C (±4°F) in range of 0°C to 40°C (32°F to 104°F)

**Hygrometer Function:** Measuring range: 10% to 90%, when temperature is 0°C to 40°C (32°F to 104°F)  
High/Low Humidity Memory

**Humidity Sensor Precision:** ±10%, when temperature is 5°C to 40°C (41°F to 104°F)

**Other:** LED light, ALL NIGHT LIGHT, 12/24-hour timekeeping

**Battery:** Two AA size batteries (Type: LR6)

**Battery Life:** Approximately 1 year

- 1 minute alarm operation per day
- 5 seconds light operation per day
- 8 hours ALL NIGHT LIGHT operation per day

**Operating Temperature:** 0°C to 40°C (32°F to 104°F)

Specifications are subject to change without notice.

## Free Manuals Download Website

<http://myh66.com>

<http://usermanuals.us>

<http://www.somanuals.com>

<http://www.4manuals.cc>

<http://www.manual-lib.com>

<http://www.404manual.com>

<http://www.luxmanual.com>

<http://aubethermostatmanual.com>

Golf course search by state

<http://golfingnear.com>

Email search by domain

<http://emailbydomain.com>

Auto manuals search

<http://auto.somanuals.com>

TV manuals search

<http://tv.somanuals.com>