



Product Features

- Retains factory features in select GM LAN 29 Bit vehicles while functioning with an aftermarket radio.
- Pre-programmed to retain factory Steering Wheel Controls.
- iPhone Voice Recognition (VR) feature from SWC on Kenwood, Pioneer, Alpine and JVC radios.
- Supports Pick Up/End Call, Pick Up and Toggle between 1st and 2nd Incoming call, AVRCP Track, Seek.
- Supports Bose, non-Bose and Y-91 audio systems.
- Provides Factory Rear Seat Entertainment Activation. Requires Cable #CRUX2333A (sold separately).
- Retains factory front and back park assist system.
- Retains chime functions.
- EIA color coded wiring for easy installation.

Vehicle Applications

BUICK

2008-2015 Enclave
2006-2011 Lucerne

CADILLAC

2006-2011 DTS
2007-2014 Escalade
2007-2009 SRX

CHEVROLET

2007-2013 Avalanche*
2007-2008 Equinox
2008-2013 Express Van**
2006-2013 Impala / Impala SS
2006-2007 Monte Carlo
2007-2013 Silverado 1500-3500 Pickup*
2007-2014 Suburban*
2007-2014 Tahoe*
2009-2015 Traverse

GMC

2007-2015 Acadia
2008-2013 Savana**
2007-2013 Sierra 1500-3500 Pickup*
2007-2014 Yukon*

HUMMER

2008-2009 H2

PONTIAC

2007-2009 Torrent

SATURN

2007-2010 Outlook
2008-2009 Vue

SUZUKI

2007-2008 XL7

Notes

1. ***NOT** compatible with 2012-Up SUVs/Trucks that are equipped with factory-installed Navigation radios.
2. ****NOT** compatible with Express and Savana vans that are powered by a diesel engine.
3. Supports Rear Entertainment System with special order harness #CJA2333A (sold separately).
4. **DOES NOT** support ONSTAR.

Parts Included



GM-49 Module



GM-49 Harness



SWC Cables



Antenna Adaptor



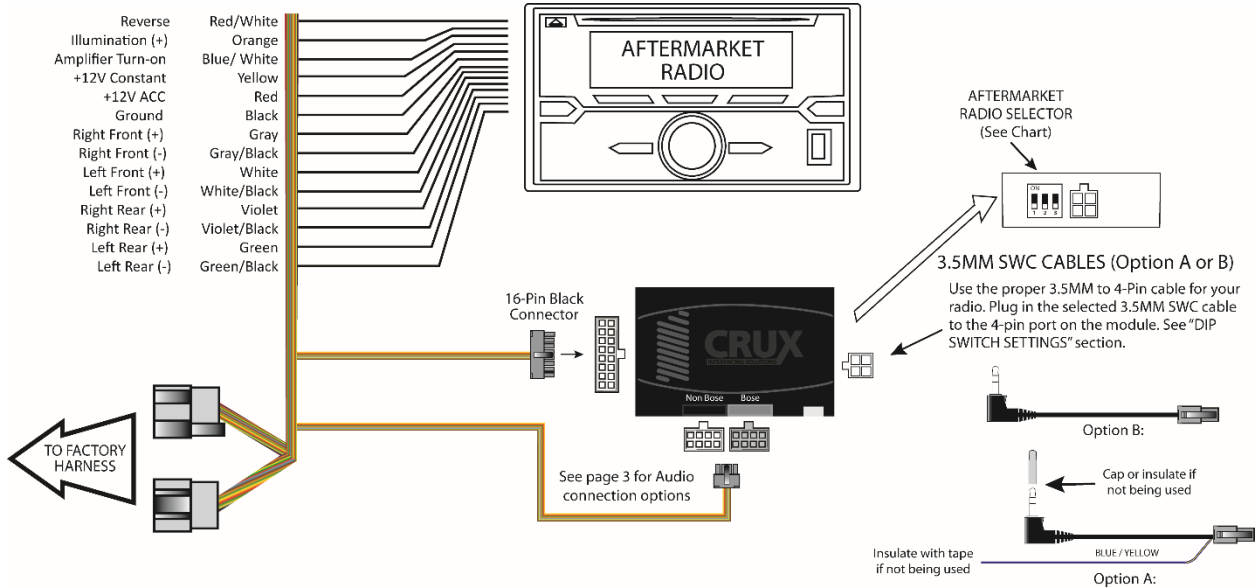
CRUX2543



Dash Kit



Installation Diagram

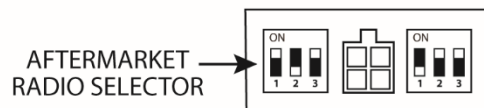


DIP Switch Settings

SETTING THE AFTERMARKET RADIO BRAND

With the key in the off position, set the DIP switches to the corresponding radio listed below.

RADIO BRAND:	DIP:	1	2	3
Fahrenheit, Jensen, Pioneer		OFF	ON	ON
Power Acoustik, Sound Stream		OFF	ON	ON
Alpine		OFF	OFF	OFF
Clarion		ON	ON	OFF
Kenwood		ON	ON	ON
JVC		ON	OFF	ON
Sony, Boss		ON	OFF	OFF



3.5MM SWC CABLE

The DKGM-49 Module allows for both types of connections:

- OPTION A** is used for ALPINE, CLARION, JVC, and KENWOOD units (Blue/Yellow wire is attached)
- OPTION B** is used for BOSS, DUAL, FAHRENHEIT, JENSEN, POWER ACOUSTIK, PIONEER, SONY and SOUND STREAM units.

NOTE: Cap or insulate the 3.5mm plug or Blue/Yellow wire if not being used.





Selecting the Audio System

If the vehicle is equipped with a Bose system, the DKGM-49 module has a built-in Bose adaptor that allows the proper audio input gain from the aftermarket radio to the Bose amplifier. To use this feature, plug in the male 8-pin connector on the harness to the GRAY female 8-pin connector on the DKGM-49 module. The module is also labeled "Bose" and "Non Bose" to avoid confusion. (see picture below)

If the vehicle is NOT equipped with a Bose system, plug in the male 8-pin connector to the BLACK female 8-pin on the GM-49 module.



CHIME VOLUME ADJUSTMENT

The DKGM-49 module has a potentiometer to adjust the chime volume. It is set at half way by default. To adjust the volume, simply use a suitable screw driver and turn the potentiometer clockwise to increase the volume and counter-clockwise to decrease the volume.

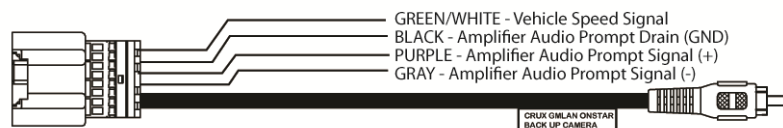


Backup Camera Connection

You can retain use of the factory backup camera by using the CRUX2543 harness provided in the kit. See below for connection instructions. (Note: Loose wires may not be needed in the installation.)

BACK-UP CAMERA CONNECTION

1. Connect the back-up camera 16-Pin connector to the vehicles 16-Pin factory connector.
2. Connect the yellow video RCA to the new aftermarket radio video input.
3. Test the video feed before installing the radio back into the dashboard.



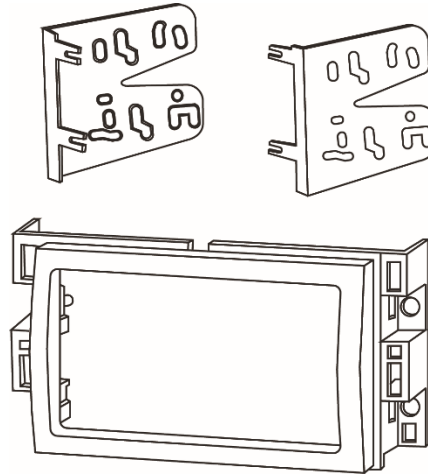
Part Number: CRUX2543



Dash Kit Installation

A double DIN radio replacement dash kit is included in the kit to make the installation quick and easy. You have the option of installing a Double DIN or two Single DIN radios. The DKGM-49 kit includes:

- (1) Main trim ring
- (1) Left ISO mounting bracket
- (1) Right ISO mounting bracket



Installation:

NOTE: Suzuki XL7 trim top corners of radio housing. See diagram A.



Diagram A

Before installation:

1. Locate the main trim ring.
2. Locate the left and right mounting brackets.
3. Slide the appropriate mounting bracket into the trim ring, aligning the holes in the trim ring to the clips on the bracket. (See Diagram B)
4. For two Single DIN radio installation, slide the stacked ISO DIN unit into the trim ring bracket assembly and secure the unit to the kit using the screws supplied with the radio. (See Diagram C)

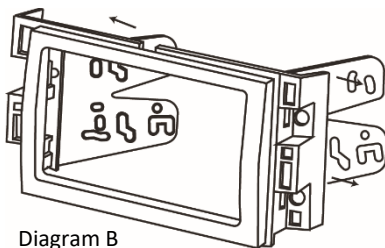


Diagram B

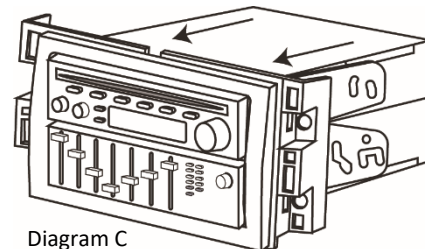


Diagram C





STEERING WHEEL CONTROL BUTTON FUNCTIONS

<u>SWC Button</u>	<u>SHORT PRESS</u>	<u>LONG PRESS</u>
PIONEER VOL + VOL - Arrow Up ▲ Arrow Down ▼ SRCE ►I Voice	Step Increment Step Decrement Preset Up Preset Down Source Tune Pick Up Call	Continuous VOL + Continuous VOL - Seek Up End Call Power On/Off Mute On/Off Activate VR/Deactivate VR

<u>SWC Button</u>	<u>SHORT PRESS</u>	<u>LONG PRESS</u>
ALPINE VOL + VOL - Arrow Up ▲ Arrow Down ▼ SRCE ►I Voice	Step Increment Step Decrement Seek Up Seek Down Source Preset Pick Up Call	Continuous VOL + Continuous VOL - None End Call None ATT On/Off Activate VR*/Deactivate VR*
	*NOTE: To Deactivate VR = Say "CANCEL"	BT Mode Active: Voice = Toggle between 1 st and 2 nd Call

<u>SWC Button</u>	<u>SHORT PRESS</u>	<u>LONG PRESS</u>
CLARION VOL + VOL - Arrow Up ▲ Arrow Down ▼ SRCE ►I Voice	Step Increment Step Decrement Preset Up Preset Source None Pick Up Call	Continuous VOL + Continuous VOL - Seek Up End Call Power On/Off Mute On/Off Mute On/Off

<u>SWC Button</u>	<u>SHORT PRESS</u>	<u>LONG PRESS</u>
JVC VOL + VOL - Arrow Up ▲ Arrow Down ▼ SRCE ►I Voice	Step Increment Step Decrement Seek Up Seek Down Source Preset Pick Up Call	Continuous VOL + Continuous VOL - M-Seek Up End Call None Mute On/Off Activate VR
	NOTE: To Deactivate VR = Say "CANCEL"	





<u>SWC Button</u>	<u>SHORT PRESS</u>	<u>LONG PRESS</u>
KENWOOD VOL + VOL - Arrow Up ▲ Arrow Down ▼ SRCE ► Voice <p style="text-align: right;">NOTE:</p>	Step Increment Step Decrement Seek Up Seek Down Source Preset Pick Up Call / Call History On/Off To Deactivate VR = Say "CANCEL"	Continuous VOL + Continuous VOL - None End Call / Deactivate VR None ATT On/Off Activate VR

BOSS Radio SWC Programming

SWC Radio Wiring connection

SWC Key1 (Brown-wire) connect to Female 3.5 mm Jack - Brown wire
 SWC Key2 (White-wire) connect to Female 3.5 mm Jack - Brown/White wire
 SWC GND (Black-Wire) connect to Radio Negative wire (Black)

Programming the Radio

Press: [SETTING] > [STEER] > [RESET] > [High Z]

Press the Steering Wheel Control (SWC) buttons set the values as listed below:

Vol - [4.07]

Vol + [3.66]

Seek - [3.37]

Seek + [2.98]

Mode [1.39]

OFF Hook [0.00]

The Value in the bracket [X.XX] will vary and will be used as parameter for each assigned function.

Press: [Assign] > [4.07] > [Vol-], then the [4.07] will be replaced with [Vol-]

With [Assign] highlighted:

Press: [3.66] > [Vol+], then the [3.66] will be replaced with [Vol+]

Press: [3.37] > [Seek-], then the [3.37] will be replaced with [Seek-]

Press: [2.98] > [Seek+], then the [2.98] will be replaced with [Seek+]

Press: [1.39] > [Mode], then the [1.39] will be replaced with [Mode]

Press: [0.00] > [Call], then the [0.00] will be replaced with [Call]

Press: [Enter] for Save the setting and Exit



Free Manuals Download Website

<http://myh66.com>

<http://usermanuals.us>

<http://www.somanuals.com>

<http://www.4manuals.cc>

<http://www.manual-lib.com>

<http://www.404manual.com>

<http://www.luxmanual.com>

<http://aubethermostatmanual.com>

Golf course search by state

<http://golfingnear.com>

Email search by domain

<http://emailbydomain.com>

Auto manuals search

<http://auto.somanuals.com>

TV manuals search

<http://tv.somanuals.com>