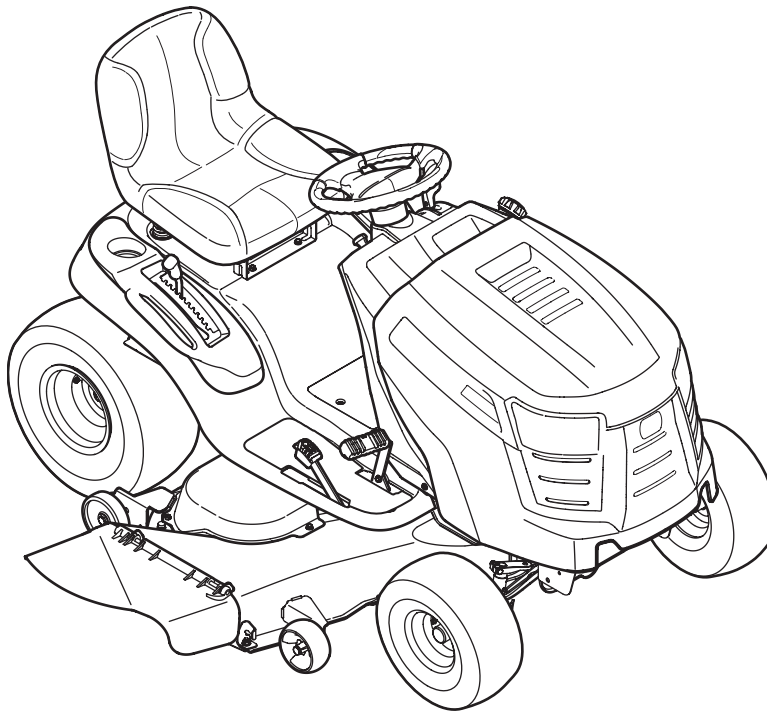


---

# *Cub Cadet*<sup>®</sup>

## ILLUSTRATED PARTS MANUAL



**Hydrostatic Lawn Tractor — LTX1050/KW**

---

CUB CADET LLC, P.O. BOX 361131 CLEVELAND, OHIO 44136-0019

---

# To The Owner

## Thank You

Thank you for purchasing a Cub Cadet Lawn Tractor. It was carefully engineered to provide excellent performance when properly operated and maintained.

All information in this manual is relative to the most recent product information available at the time of printing. Please be aware that this Illustrated Part's Manual may cover a range of product specifications for various models.

Components listed and/or illustrated in this manual may not be applicable to all models. We reserve the right to change product specifications, designs and equipment without notice and without incurring obligation.

Throughout this manual, all references to *right* (RH) and *left* (LH) are observed from the operating position.

---

## Table of Contents

<a href="#"><u>Front and Rear Wheels .....</u></a>	<a href="#"><u>3</u></a>	<a href="#"><u>Hydrostatic Transmission (Tuff-Torq 918-05010) .....</u></a>	<a href="#"><u>16</u></a>
<a href="#"><u>Steering .....</u></a>	<a href="#"><u>4</u></a>	<a href="#"><u>Engine Accessories .....</u></a>	<a href="#"><u>19</u></a>
<a href="#"><u>Frame, Electrical and PTO .....</u></a>	<a href="#"><u>6</u></a>	<a href="#"><u>LTX 1050KW Labels .....</u></a>	<a href="#"><u>20</u></a>
<a href="#"><u>Seat, Fender and Lift.....</u></a>	<a href="#"><u>8</u></a>	<a href="#"><u>LTX 1050 Labels .....</u></a>	<a href="#"><u>21</u></a>
<a href="#"><u>Fuel Tank, Hood and Dash .....</u></a>	<a href="#"><u>10</u></a>	<a href="#"><u>LTX 1050/KW Electrical Schematic.....</u></a>	<a href="#"><u>22</u></a>
<a href="#"><u>Drive System (Tuff Torq).....</u></a>	<a href="#"><u>12</u></a>	<a href="#"><u>Kawasaki FR691V-AS17 .....</u></a>	<a href="#"><u>24</u></a>
<a href="#"><u>50-inch Deck.....</u></a>	<a href="#"><u>14</u></a>		

---

## Record Product Information

To ease in ordering replacement parts, please locate the model plate on the equipment and record the information in the provided area to the right. You can locate the model plate by looking beneath the seat.

### MODEL NUMBER

--	--	--	--	--	--	--	--	--	--	--

### SERIAL NUMBER

--	--	--	--	--	--	--	--	--	--	--

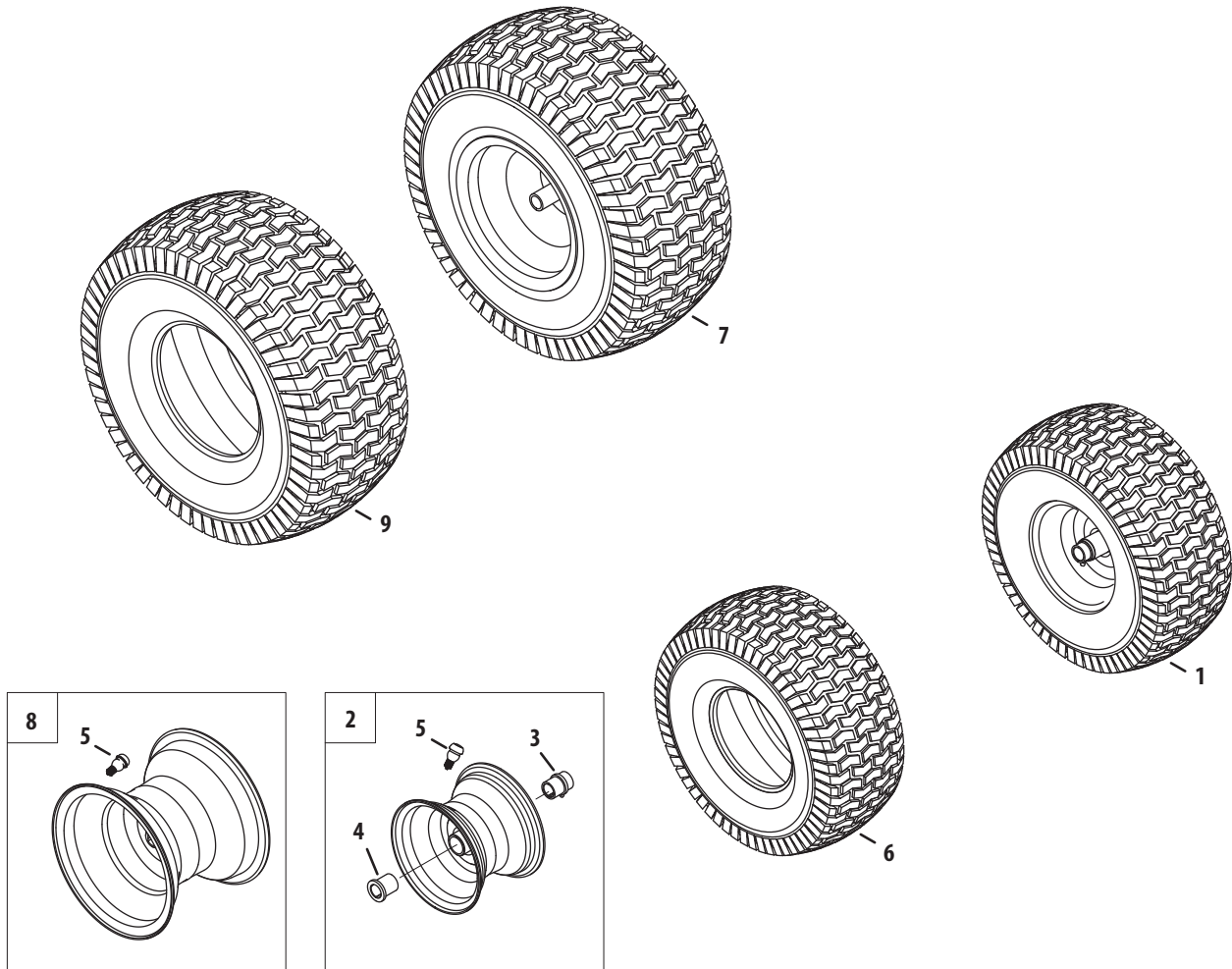
---

## Painted Parts

When ordering painted service parts, a four digit color suffix must be added to the part number (e.g. 783-XXXX-0637). Please refer to the table below for current color codes:

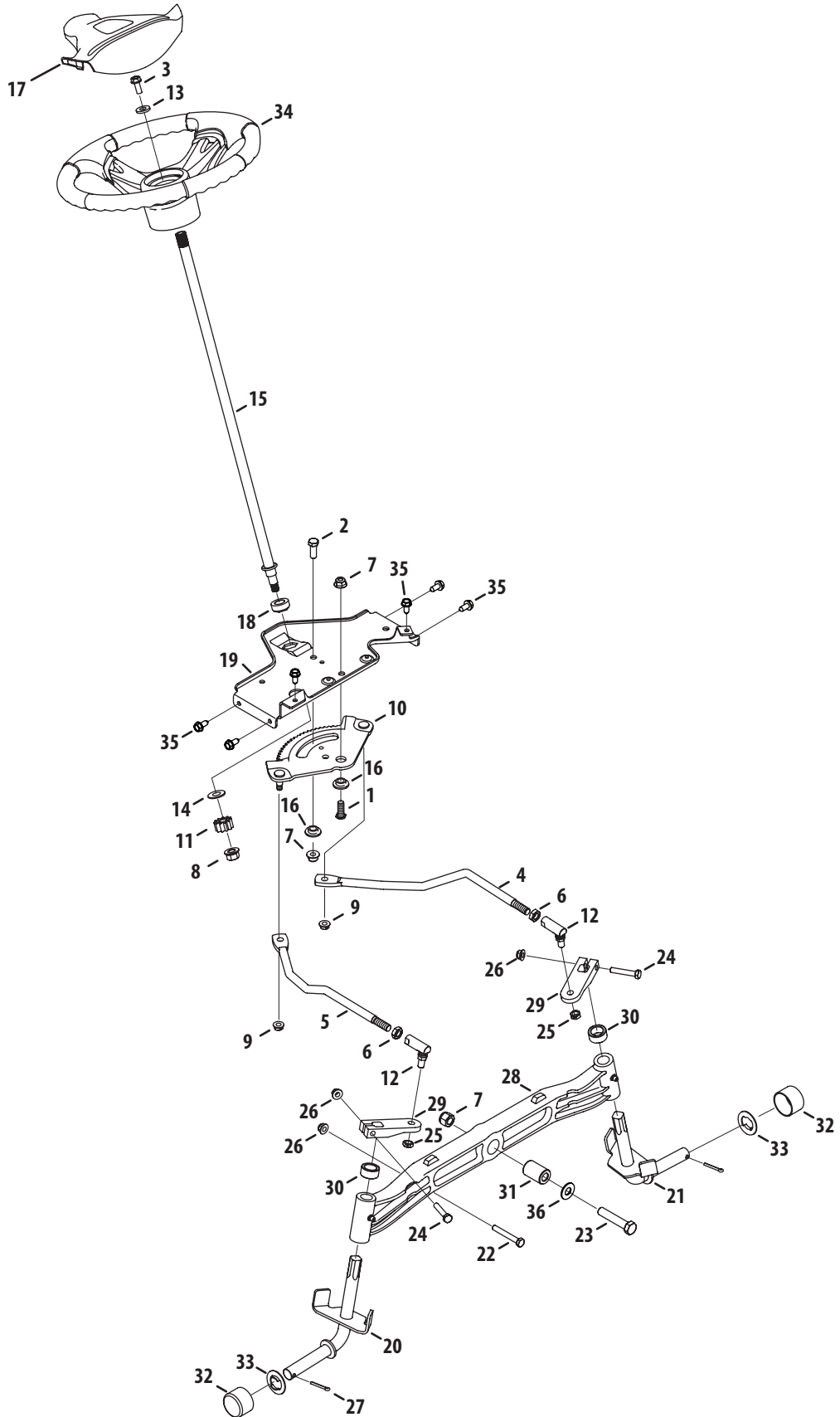
0637	Black
4021	Yellow (Cub Cadet)
0499	Beige (Cub Cadet)

0685	Blue (Cub Cadet)
0691	Black Jack (Cub Cadet Commercial)



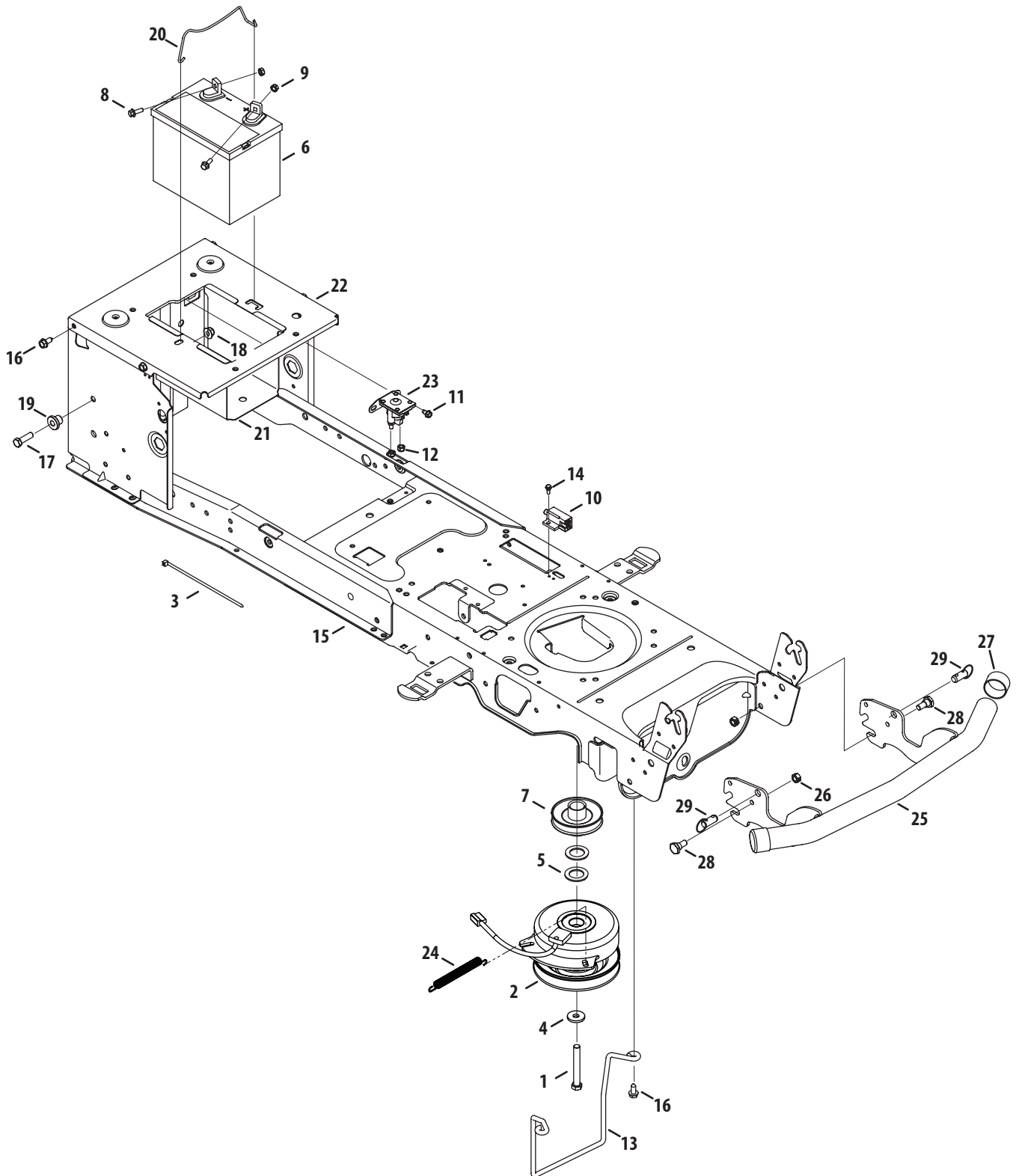
Ref.	Part Number	Description
1.	634-04406-0931	Wheel Ass'y, Complete, 15 x 6 x 6
2.	634-04405-0499	Rim Ass'y, 6.0 x 4.5, Plastic Bearings
3.	741-0990B	Bearing, Flange, .760 ID w/ Fitting
4.	741-0516B	Bearing, Flange, .760 x 1.00 x 1.20
5.	934-0255	Valve, Tubeless Air
6.	734-1731-0901	Tire, 15 x 6 x 6 Sq Shoulder
7.	634-0104-0931	Wheel, Complete, 20 x 8 x 8
—	634-0177-0931	Wheel Assy, Complete, 20 x 10 x 8
8.	634-04369-0499	Rim Ass'y, 8.0 x 7.0 x .750 ID
9.	734-1730-0901	Tire, 20 x 8 x 8 Sq Shoulder
—	734-1873-0901	Tire, 20 x 10 x 8 Sq Shoulder

# Steering



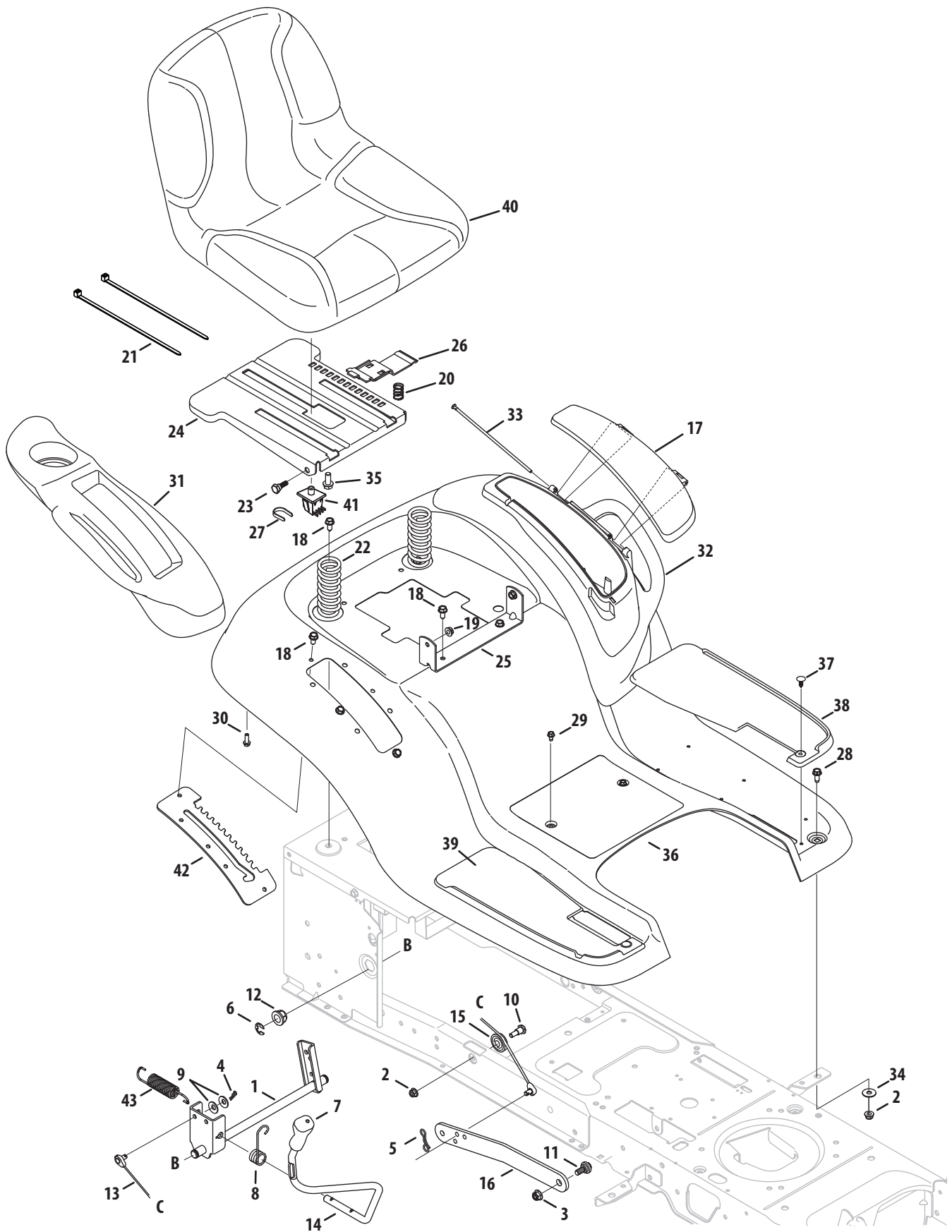
Ref.	Part Number	Description
1.	710-04095	Hex Screw, 3/8-16, 1.00, Gr5, Spec
2.	710-0514	Hex Screw, 3/8-16, 1.00, Gr5, Std
3.	710-0650	Hex Screw, 5/16-18, .875, Gr5, Lock
4.	711-04998	Link, Drag LH
5.	711-04999	Link, Drag RH
6.	912-0240	Nut, Jam, 7/16-20, Gr2
7.	712-04065	Nut, Flange Lock, 3/8-16, Grf,
8.	712-0459	Nut, Flange Lock, 7/16-20, Grb, Lock
9.	712-3004A	Nut, Flange Lock, 5/16-18, Gr5, Sd Lk
10.	717-1550F	Gear, Steering, 11/90 Ratio
11.	717-1554	Gear, Pinion, Steering
12.	923-0448A	Ball Joint, 7/16-20, Lock
13.	936-3004	Washer, Flat, .406 x .875 x .105
14.	736-3084	Washer, Flat, .51 x 1.12 x .06
15.	738-04262	Shaft, Steering, .625 OD x 25, Cub
16.	738-04363	Spacer, Shoulder, .385x 1.25 x .3025
17.	731-04532B	Cover, Steering Wheel, Cub Cadet
18.	741-04237B	Bearing, Flange, Hex 5/8 Pm
19.	783-06043	Bracket, Support, Steering
20.	638-04022	Axle Ass'y, RH .750 Dia.
21.	638-04028	Axle Ass'y, LH .750 Dia.
22.	710-0395	Hex Screw, 5/16-18, 2.25, Gr5, Std
23.	710-0859	Hex Screw, 3/8-16, 2.50, Gr5, Std
24.	710-3180	Hex Screw, 5/16-18, 1.75, Gr5, Std
25.	912-0214	Nut, Hex Lock, 3/8-24, Grb
26.	712-04063	Nut, Flange Lock, 5/16-18, Grf
27.	714-0162	Pin, Cotter, 5/32, 1.25
28.	719-04413A	Axle, Pivot Bar, Cast
29.	748-04278	Steering, Block
30.	748-04068	Spacer, .71 ID x .125 OD x .56
31.	750-05280	Spacer, .385 x 1.00 x 1.5075
32.	731-08049	Cap, Bumper
33.	736-04228A	Washer, Flat, .350 x 1.559 x .062
34.	631-04008A	Wheel, Steering, 3 Spoke, Softgrip
35.	710-04484	Screw, Self-tapping, 5/16-18, .750,
36.	936-0300	Flat Washer, .406 x .875 x .059

# Frame, Electrical and PTO



Ref.	Part Number	Description
1.	710-04379A	Hex Screw, 7/16-20, 3.50, Gr5, Lock
2.	917-05122	Clutch, Electric PTO
	725-06019	Clutch Harness Wire 11.625"
3.	725-0157	Cable, Tie, 3/16 X .05 X 7.4
4.	736-0322	Washer, Flat, .450 x 1.25 x .164
5.	736-0277	Washer, Flat, 1.031 X1.620 X.095
6.	925-1707D	Battery
7.	756-0978B	Engine Pulley, Electric PTO
8.	710-04666	Hex Flange Screw, 1/4-20, .75, Gr5
9.	712-0271	Nut, Sems, 1/4-20
10.	725-04363	Switch, Interlock
11.	710-0653	Screw, Self-tapping, 1/4-20, 0.375
12.	712-04064	Nut, Flange Lock, 1/4-20, Nylon
13.	747-05195	Rod, Keeper
14.	738-04237A	Screw, Shoulder, #10-32, .50
15.	683-04469D	Frame Assembly, Lower
16.	710-04484	Screw, Self-tapping, 5/16-18, .750
17.	710-3005	Hex Screw, 3/8-16, 1.25, Gr5
18.	712-04065	Nut, Flange Lock, 3/8-16, Nylon
19.	738-04058	Spacer, Shoulder, .38 X 1.0 X .70
20.	747-04121A	Rod, Battery
21.	783-0349	Tray, Battery
22.	783-06089	Bracket, Frame, Seat
23.	725-06153	Solenoid, 12V, 100 Amp, 4 term
24.	732-0814	Spr, Extn, .56 Dia X 5.52
25.	683-04219B	Bumper Assembly, Universal
26.	712-0130	Hex Lock Nut, 3/8-16
27.	731-08049	Cap, Bumper
28.	738-0143	Bolt, Shoulder, .496 x .336, 3/8-16
29.	714-04061	Pin, Quick Release, 1/2 Dia x .50
—	925-04093	Harness Assembly, Main

# Seat, Fender and Lift

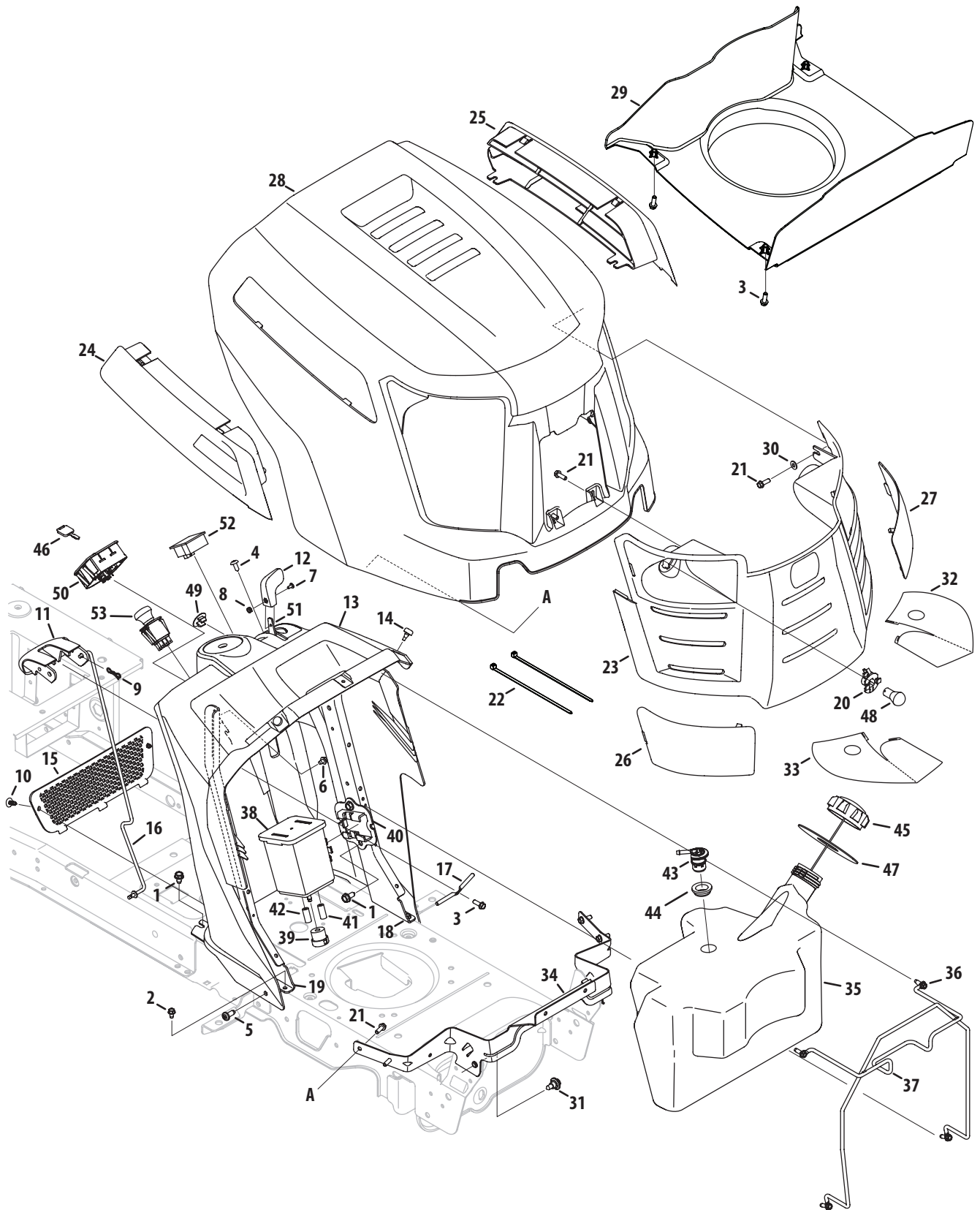




## Seat, Fender and Lift

Ref.	Part Number	Description	Ref.	Part Number	Description
1.	683-04223	Shaft Ass'y, Lift	23.	938-0296	Screw, Shoulder, .437 x .268, 5/16-18
2.	712-04063	Nut, Flange Lock, 5/16-18, Grf	24.	783-06049	Bracket, Mounting, Seat
3.	712-04065	Nut, Flange Lock, 3/8-16, Grf	25.	783-06088A	Bracket, Pivot, Seat
4.	914-0104	Pin, Cotter, .072 Dia. x 1.13	26.	783-06050	Lever, Seat Adjustment
5.	714-04040	Pin, Cotter, Bow-Tie 72	27.	783-06448	Clip, Retaining, Switch
6.	716-0106A	Ring, E Type, .625 Dia. Shaft	28.	710-1260A	Hex Screw, 5/16-18, .75, Gr5, Std
7.	720-04139B	Grip, Handle, Cub, .50 ID	29.	710-0599	Screw, Self-tapping, 1/4-20, 0.500,
8.	732-0874	Spring, Torsion	30.	710-0895	Screw, HL, 1/4-15, 0.750,
9.	736-0105	Washer, Spring, .401 x .870 x .063	31.	731-06700	Cover, Fender, RH
10.	738-0138A	Screw, Shoulder, .437 x .470, 5/16-18	32.	731-06676	Cover, Fender, LH
11.	938-0380	Bolt, Shoulder, .50, 3/8-16	33.	747-05039	Pin, Door
12.	941-0225	Bearing, Hex Flange	34.	736-3078	Washer, Flat .344 x 1.00 x .063
13.	746-0968	Cable, Lift, 16.16	35.	710-04482	Hex Flange Screw, 3/8/16, .875, Gr5
14.	747-04962A	Handle, Lift,	36.	783-06118	Fender, Cub Hydro
15.	756-04331	Pulley, Roller, Cable	37.	726-3046	Clip, Ratchet, .250 Dia
16.	783-05546A	Link, Lift	38.	735-04137	Pad, Foot, LH
17.	731-06584	Door, Cover, Fender	39.	735-04139	Pad, Foot, RH
18.	710-04484	Screw, Self-tapping, 5/16-18, .750,	40.	757-04131	Seat, High Back Cloth, Cub
19.	712-3004A	Nut, Flange Lock, 5/16-18, Gr5, Sd Lk	41.	925-05013	Switch, Seat
20.	732-04563	Spring, Compr', .68 x 1.065 x .055	42.	783-06181	Bracket, Lift
21.	725-0157	Cable, Tie, 3/16 x .05 x 7.4	43.	732-0934	Spring, Extension, 1.15 OD x 5.99
22.	732-04849	Spring, Comprs, 1.50 x 3.90 x .200			

# Fuel Tank, Hood and Dash



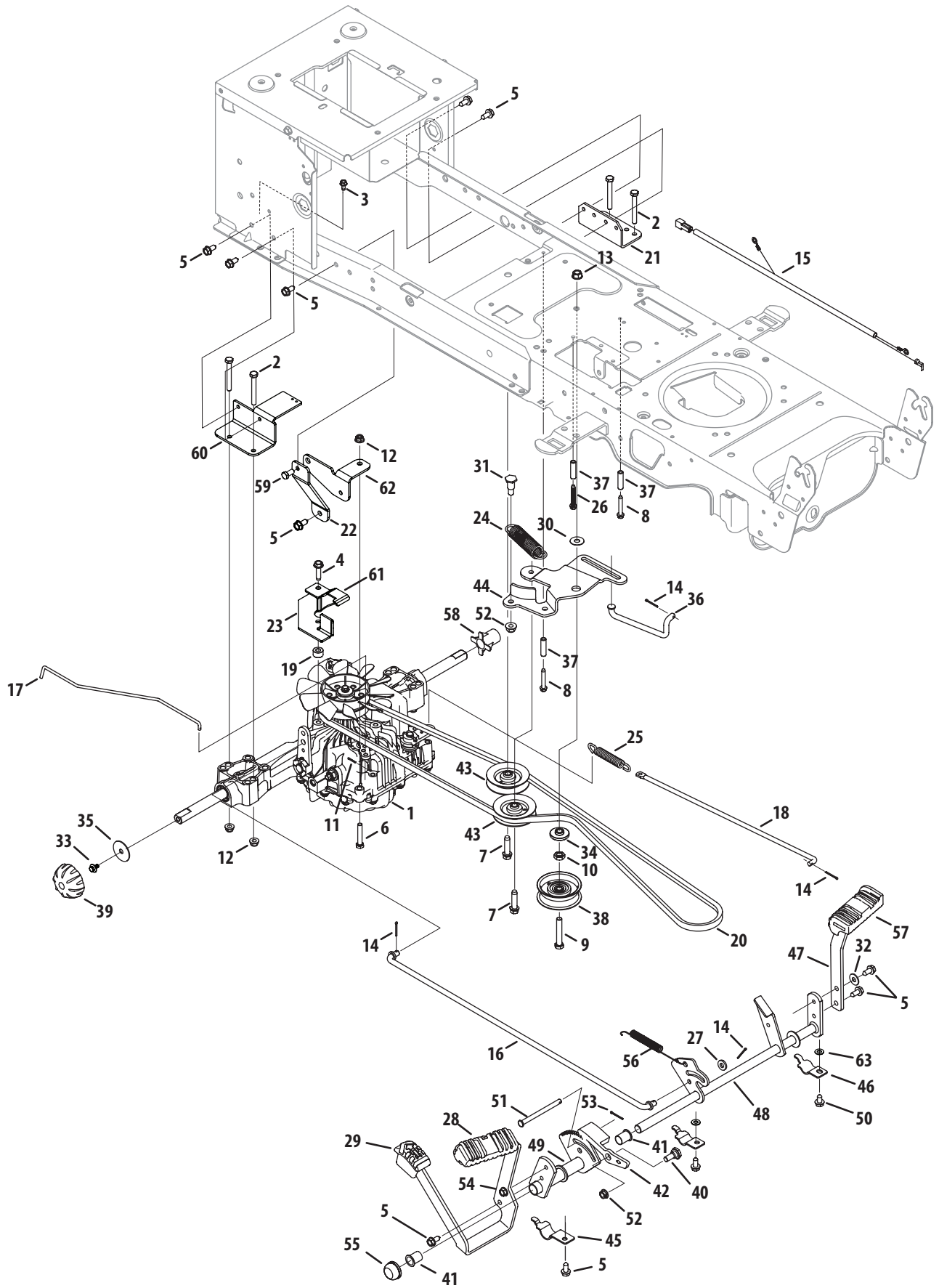
## Fuel Tank, Hood and Dash

Ref.	Part Number	Description
1.	710-04484	Screw, Self-tapping, 5/16-18, .750
2.	710-0599	Screw, Self-tapping, 1/4-20, 0.500
3.	710-0895	Screw, HL, 1/4-15, 0.750
4.	710-1017	Screw, Ab, 1/4-14, 0.625,
5.	710-1611B	Screw, Self-tapping, 5/16-18, 0.750,
6.	710-1652	Screw, Self-tapping, 1/4-20 x .625
7.	710-3217	Screw, Mach, #8-32, 0.375
8.	712-0142	Nut, Hex, #8-32
9.	714-04040	Pin, Cotter, Bow-Tie 72
10.	726-3046	Clip, Ratchet, .250 Dia
11.	731-05447A	Lever, Dash, Cruise/Brake
12.	731-06593	Knob, Throttle
13.	931-06554	Dash Panel, A-Style, Elect PTO
14.	735-0271A	Bumper, .62 Dia X .3
15.	735-04076	Net
16.	747-05009B	Rod, Control, Latch Cub
17.	747-1196	Rod, Lever, Bent
18.	783-06098	Support, Dash, Plate LH
19.	783-06099	Support, Dash, Plate RH
20.	925-1649	Socket, Lamp
21.	710-05108	Screw, 1/4 Dia, .750
22.	926-0154	Tie, Cable, Push Mount 7.5 Lg
23.	931-04322	Grille Ass'y (Incl. 26, 27, 32 & 33)
24.	931-06542B	Scoop, Hood, RH A-Style
25.	931-06543B	Scoop, Hood, LH A-Style
26.	931-06558	Lens, Hood, RH A-Style
27.	931-06559	Lens, Hood, LH A-Style
28.	931-06634	Hood, A-Style

Ref.	Part Number	Description
29.	731-06936†	Plenum, A-Style
30.	936-3020	Washer, Flat, .271, .630, .065
31.	738-04091A	Screw, Shoulder, .43x.29, 5/16-18
32.	777X44055	Reflector, Cub A Style, LH
33.	777X44056	Reflector, Cub A Style, RH
34.	783-06114	Bracket, Pivot, Hood A-Style
35.	951-04311	Tank, Fuel, 3.30 Gal..
36.	710-1652	Screw, Self-tapping, 1/4-20, .625
37.	747-05040A	Rod, Support, Fuel Tank
38.	951-10589	Canister, Carbon, 5 Gallon (CA)
39.	951-10590	Filter, Vent, Canister (CA)
40.	951-10610	Bracket, Adapter, Canister (CA)
41.	751-10749-14	Hose, Fuel, Low Perm, 3/16 Wht (CA)
42.	751-10750-28	Hose, Fuel, Low Perm, 7/32 Yel (CA)
43.	751-12118	Valve, Rollover Grommet
44.	735-04081	Grommet, Rubber, 23.0 ID
45.	951-12179B	Cap, Fuel
	951-12426A	Cap, Fuel Carb
46.	625-05000	Key, Assembly
47.	735-04170	Gasket, Fuel Tank
48.	925-0963	Lamp, 12v
49.	731-1999	Plug, Choke
	746-04120†	Control, Choke, 40.5 x 2, Yellow
50.	725-06102A	Module Switch, Ignition
51.	946-04556	Cable, Throttle/Choke, 38"
	946-1086†	Cable, Throttle, 39"
52.	925-06154	Meter, Indicator
53.	725-04258	Switch, Electric PTO, Yellow

† If Equipped

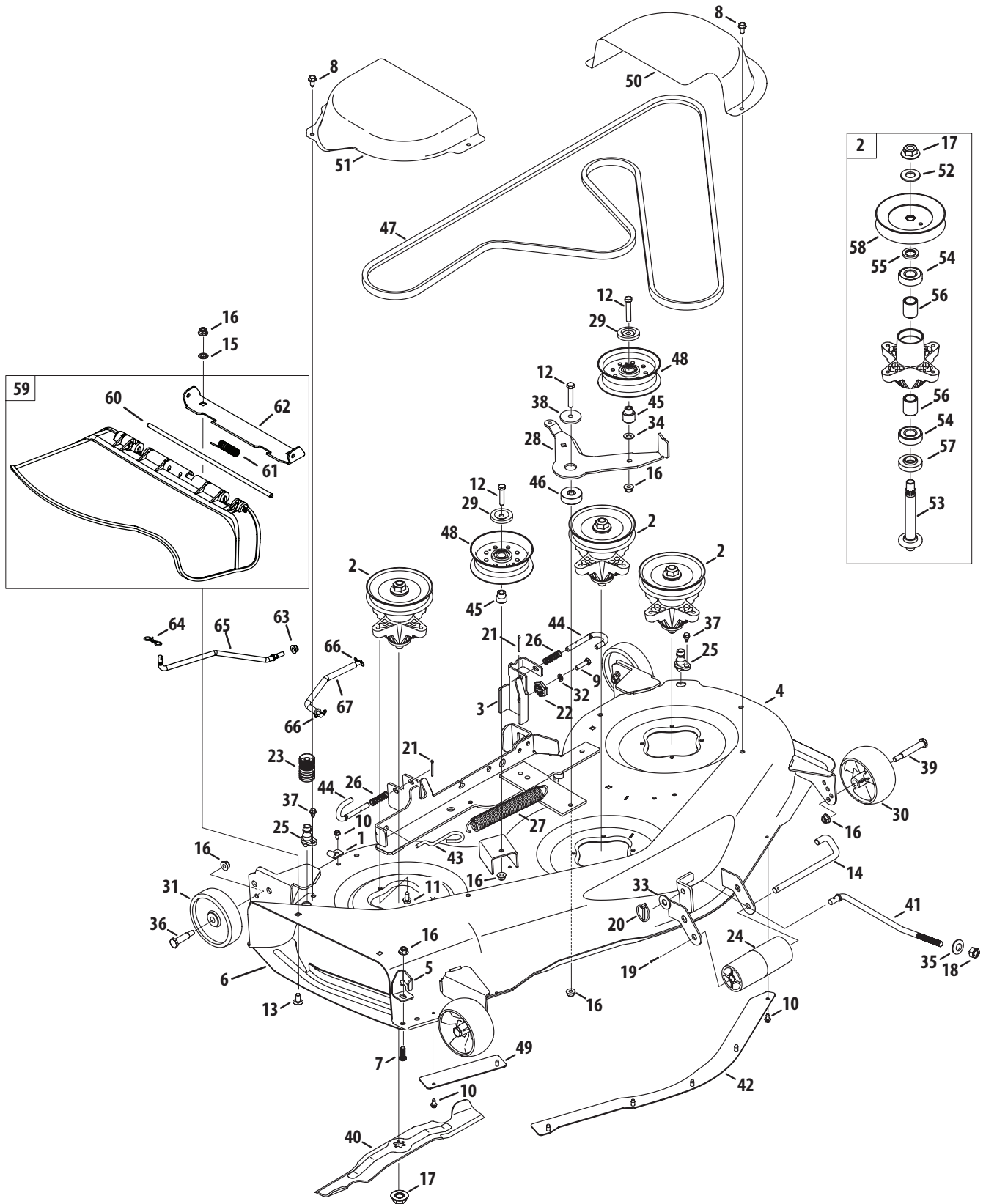
# Drive System (Tuff Torq)



## Drive System (Tuff Torq)

Ref.	Part Number	Description	Ref.	Part Number	Description
1.	918-05010	Transmission, Tuff Torq K46	33.	710-05339	Screw, 5/16-24 x .750
2.	710-0378	Hex Screw, 5/16-18, 2.50, Gr5, Std	34.	738-04420	Spacer, Shoulder, 1.375 x .380 x .183
3.	710-0599	Screw, Self-tapping, 1/4-20, 0.500	35.	736-0430	Washer, Flat, .350 x 1.59 x .062
4.	710-0817	Screw, Self-tapping, 5/16-18, 1.250	36.	747-04957A	Rod, Transmission, Bypass
5.	710-04484	Screw, Self-tapping, 5/16-18, .750	37.	750-04456	Spacer, .260 x .372 x 1.420
6.	710-3180	Hex Screw, 5/16-18, 1.75, Gr5	38.	756-04224	Pulley, Idler, Flat 2.75 OD
7.	710-1007	Screw, Self-tapping, 3/8-16, 1.500	39.	731-2290A	Cap, Hub
8.	710-1325	Screw, Self-tapping, 1/4-20, 1.625	40.	938-0380	Bolt, Shoulder, .500 x .270, 3/8-16
9.	710-3011	Hex Screw, 3/8-16, 2.25, Gr5	41.	741-0495	Bearing, Flange, .630 x .695 x .60
10.	912-0240	Nut, Jam, 7/16-20, Gr2	42.	748-04203	Latch, Cruise
11.	914-0111	Pin, Cotter, 3/32, 1.0	43.	756-04325	Pulley, Idler, V-Type x 3.06
12.	712-04063	Nut, Flange Lock, 5/16-18, Nylon	44.	783-06027B	Bracket, Idler, Center Double
13.	912-0431	Nut, Flange Lock, 3/8-16	45.	783-05914	Bracket, Support, Pedal Strap
14.	914-0111	Pin, Cotter, 3/32, 1.0	46.	783-05940	Bracket, Support, Pedal Strap 5/8
15.	725-05335	Jumper Harness, Ground & Reverse	47.	783-06103A	Bracket, Pedal, Brake
16.	747-05447	Rod, Control, Tuff-Torq	48.	647-04152D	Control Assembly, Brake
17.	747-05448	Rod, Hydro Bypass	49.	683-04488	Bracket Assembly, Pedal, Hydro
18.	747-05452	Rod, Brake, NX9 Tuff-Torq	50.	710-0604A	Screw, Self-tapping, 5/16-18, 0.625,
19.	750-05512	Spacer, .330 x .715 x .430	51.	711-05068A	Pin, Clevis, 5/16 x 3.985
20.	954-04297	Belt, V-Type	52.	712-04065	Nut, Flange Lock, 3/8-16, Nylon
21.	783-06849	Bracket, Mount, Tuff-Torq	53.	714-04040	Pin, Cotter, Bow-Tie 72
22.	783-07349	Bracket, NX9 Tuff Torq	54.	783-06059	Bracket, Pedal, Hydro
23.	783-07260	Bracket, Belt Keeper	55.	726-0214	Cap, Push 5/8
24.	732-04792	Spring, Extension, 1.00 Dia x 4.75	56.	732-04587	Spring, Extension, .63 Dia x 4.95
25.	732-0716D	Spring, Extension, .59 Od x 4.00	57.	735-04136	Pad, Pedal, Brake
26.	710-1026	Screw, Self-tapping, 1/4-20 x 1.75	58.	731-05299A	Sleeve, .765 Id x 1.500
27.	936-0185	Washer, Flat, .375 x .738 x .063	59.	710-0216	Hex Cap Screw, 3/8-16 x .75
28.	735-04118A	Pad, Pedal, Forward	60.	783-07295	Bracket, Mount
29.	735-04135	Pad, Pedal, Reverse	61.	783-07347	Bracket, Belt
30.	936-0344	Wash, Flat, .385 x 1.00 x .030	62.	783-07350	Bracket, Support
31.	738-0430	Scr, Shldr, .50 x .685 3/8-16	63.	936-0275	Flat Washer, .344 x .688 x .065
32.	736-0242	Washer, Bell, .340 x .872 x .060			

# 50-inch Deck

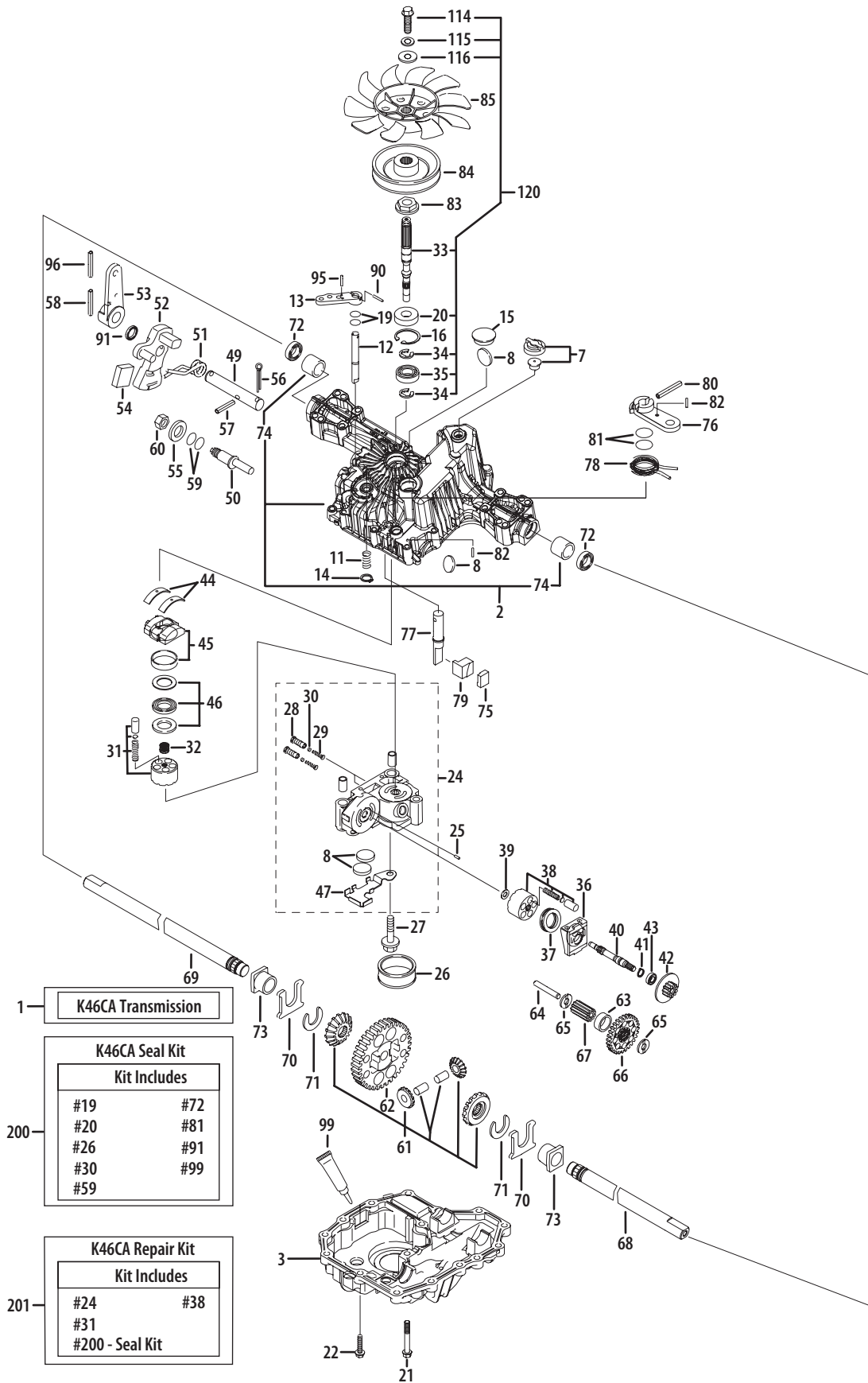


## 50-inch Deck

Ref.	Part Number	Description
1.	96606	Bracket, Hook, Retainer
2.	918-04125B	Spindle Assembly, Pulley, 5.39 Dia.
3.	683-0254B	Bracket Assembly, Deck, Hanger LH
4.	683-05148	Deck Assembly, 50"
5.	703-3279	Stop, Chute, Deflector
6.	703-3511B	Finger Guard
7.	710-04095	Hex Screw, 3/8-16, 1.00, Gr5, Spec
8.	710-04484	Screw, Self-tapping, 5/16-18, .750,
9.	710-0528	Hex Screw, 5/16-18, 1.25, Gr5, Std
10.	710-0599	Screw, Self-tapping, 1/4-20, 0.500
11.	710-1260A	Screw, Self-tapping, 5/16-18, 0.750,
12.	710-3144	Hex Screw, 3/8-16, 2.00, Gr5, Std
13.	710-3178	Bolt, Carriage, 3/8-16, 0.75, Gr1
14.	911-3314	Roller Pin-1/2 Dia. x 7.31
15.	712-0229	Nut, Push, 3/8
16.	712-04065	Nut, Flange Lock, 3/8-16, Nylon
17.	712-0417A	Nut, Flange, 5/8-18
18.	712-04243	Nut, 1/2-13
19.	914-0111	Pin, Cotter, 3/32, 1.0
20.	753-04070	Pin, Lynch, .1875
21.	914-0470	Pin, Cotter, 1/8 x 1.25
22.	917-04074	Gear, Deck, Adjustment
23.	921-04041	Coupler, Water
24.	731-05679	Roller, Front
25.	731-07487	Deck Wash Nozzle
26.	732-04652	Spring, Compr', .535 OD x 1.751
27.	732-04927	Spring, Extension, 1.25 OD x 8.5
28.	783-08309	Pivot Idler bracket
29.	783-08389	Pulley Cap
30.	734-04155	Wheel, Deck, 5.0 Dia. Ball
31.	734-0973	Wheel, Deck 5.0 x 1.38
32.	936-0119	Washer, Lock, 5/16, Regular Duty
33.	936-0179	Washer, Flat, .531 x 1.25 x .100
34.	936-0300	Flat Washer, .406 x .875 x .059

Ref.	Part Number	Description
35.	736-0317	Washer, Bell, .63 x 1.25 x .18
36.	938-0373	Bolt, Shoulder, .496 x 1.525, 3/8-16
37.	738-04278	Shoulder Screw, 1/4-20 x 0.50
38.	738-05082	Shoulder Spacer, .970 x .190
39.	938-3056	Bolt, Shoulder, .496 x 2.50, 3/8-16
40.	942-04053C	Blade, 17.90 Star 2 In 1
41.	747-05067A	Rod, Lift, Deck, Front, 11.7
42.	783-04414A	Skirt, Center, 50"
43.	747-05608	Rod, Deck Spring Hook
44.	747-1116	Rod, Deck Release
45.	748-05037	Shoulder Spacer
46.	750-06184	Spacer, .385 ID x 1.75 OD x .585
47.	954-04077	Belt, V-Type
48.	756-05034	Pulley, Idler, 4.50" Dia.
49.	783-04415	Skirt, RH, 50"
50.	783-04399	Cover, Belt, LH 50"
51.	783-04400	Cover, Belt, Rh 50"
52.	736-0315	Flat Washer, .760 x 1.50 x .120
53.	738-1010A	Shaft, Spindle, 5.75
54.	941-0919A	Bearing, Ball, .787id x 1.85 Od x .551
55.	748-0160A	Spacer, .79 ID x 1.25 OD x .175
56.	750-1000	Spacer, .80 x 1.10 x 1.322
57.	750-1349A	Spacer, .79 x 1.82 x .55
58.	756-04216	Pulley, Deck, 5.39 Dia.
59.	631-04070C	Chute Assembly
60.	711-04565	Pin, Hinge, .3175 Dia. x 14.06 ,1
61.	732-04372	Spring, Torsion, .44 I.D. x 2.0,
62.	783-05030	Bracket, Chute 50/54"
63.	712-04063	Nut, Flange Lock, 5/16-18, Nylon
64.	714-04043	Pin, Cotter, Bow-Tie
65.	747-05701	Rod, Support, Deck (Tuff Torq)
66.	714-04040	Pin, Cotter, Bow-Tie
67.	747-05279	Rod, Support, Deck (CA)

# Hydrostatic Transmission (Tuff-Torq 918-05010)





## Hydrostatic Transmission (Tuff-Torq 918-05010)

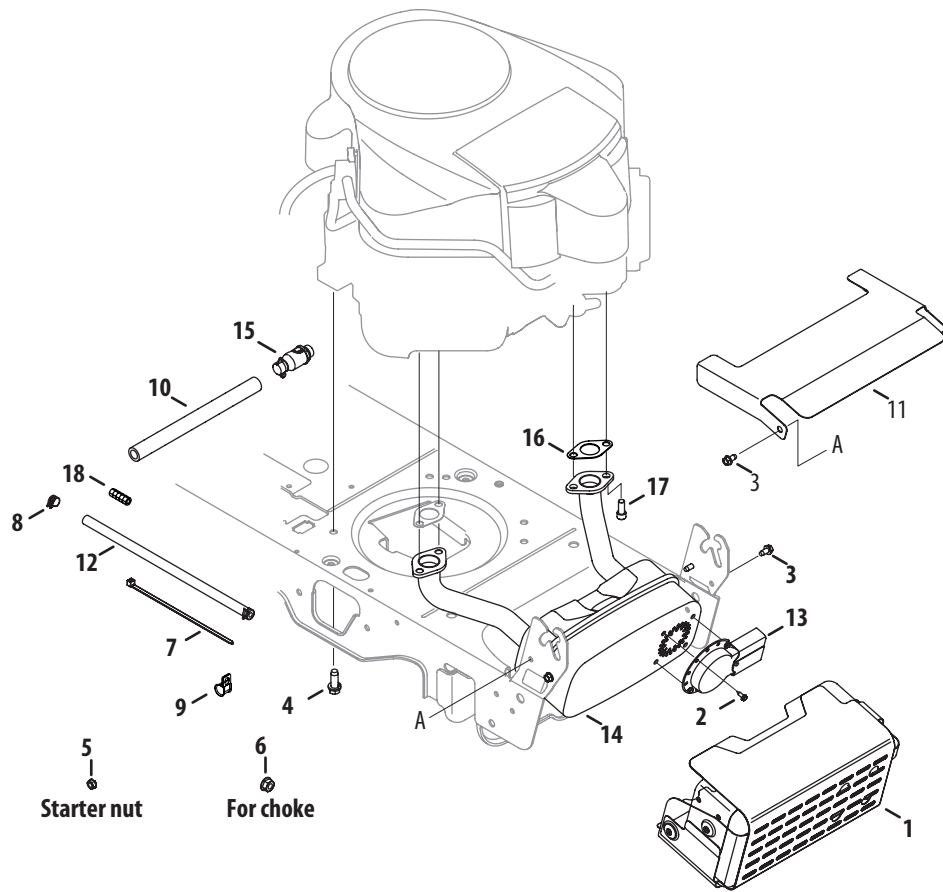
Ref.	Part Number	Description
1	918-05010	K46CA Transaxle
2	TT-1A646084431	Kit, Upper Case
3	TT-1A646084181	Lower Case
7	TT-168T2024250	Vent Valve 15
8	TT-19216324360	Magnet
11	TT-19215427281	Spring 25
12	TT-1A646029510	Bypass Shaft A
13	TT-1A632029520	Bypass Lever
14	TT-19216829570	Snap Ring 10
15	TT-168T2036300	Sealing Cap 30
16	TT-22252000350	Snap Ring C 35
19	TT-24311240100	O-Ring 1A P10A
20	TT-24421153507	Seal TC 153507
21	TT-26476080552	Tapping Screw 8 x 55
22	TT-26476080302	Tapping Screw 8 x 30
24	TT-1A646099070	Kit, Center Case C
25	TT-19216824760	Pin 3 x 9.8
26	TT-168T2025220	Filter 105
27	TT-168T2099990	Bolt 10 x 75
28	TT-1A646024800	IDS Valve 1.2
29	TT-1A646024761	IDS Spring
30	TT-1A646024790	IDS Filter 300
31	TT-168T2025090	Kit, Cylinder Block (Pump)
32	TT-1A646025200	Spring
33	TT-1A646025230	Pump Shaft
34	TT-22272-000120	E-Ring 15
35	TT-24101062020	Bearing 6202C3
36	TT-19216824210	Motor Housing
37	TT-1A646034750	Thrust Bearing 51106
38	TT-168T2025080	Kit, Cylinder Block
39	TT-19216825230	Washer 12 x 24 x 1
40	TT-1A646025271	Motor Shaft
41	TT-19215425310	Snap Ring C15
42	TT-1A646025400	Brake Disc/Motor Gear (11T)
43	TT-168T2025280	Bearing 6202 RSR C3
44	TT-187T0027060	Thrust, Plastic
45	TT-168T2084530	Swash Plate Assembly
46	TT-19216399000	Kit, Thrust Bearing (Pump)
47	TT-1A646029010	Magnet Holder

Ref.	Part Number	Description
49	TT-1A646029911	Control Shaft
50	TT-168T2029920	Fulcrum
51	TT-168T2029800	Torsion Spring, Standard
52	TT-1A646029740	Control Arm A
53	TT-1A646029400	Control Lever F
54	TT-168T2029360	Jerky Plate
55	TT-22137120000	Washer 12
56	TT-1A646029940	Cotter Pin 1/8" x 3/4"
57	TT-22351060036	Spring Pin 6 x 36
58	TT-22351060040	Roll Pin 6 x 40
59	TT-24311000140	O-Ring P14
60	TT-26776120002	Nut 12
61	TT-1A646031570	Diff Gear Kit
62	TT-1A646033520	Final Gear (54T)
63	TT-1A646033250	Final Pinion Collar
64	TT-1A646033410	Reduction Shaft
65	TT-19216833420	Washer 12 x 32 x 3.2
66	TT-1A646033450	Reduction Gear (37T)
67	TT-168T2033540	Final Pinion Gear (10T)
68	TT-1A646034370	Axle Shaft, Left
69	TT-1A646034380	Axle Shaft, Right
70	TT-19216334261	Thrust Washer
71	TT-19216834270	Ring 17
72	TT-19216334280	Seal 19 x 32 x 8
73	TT-19216834350	Bushing 19 x 25
74	TT-19216334240	Bushing 19.05
75	TT-1A646036121	Brake Shoe
76	TT-1A646036160	Brake Lever
77	TT-1A646036171	Brake Shaft
78	TT-168T2036180	Brake Return Spring
79	TT-1A646036200	Brake Actuator
80	TT-22351050032	Spring Pin 5 x 32
81	TT-24311000120	O-Ring 1A P12
82	TT-22351040016	Spring Pin 4 x 16
83	TT-1A646025300	Spline Collar
84	TT-1A646025760	Pulley B
85	TT-1A646083070	Fan, Black
90	TT-22351030020	Spring Pin 3.0A x 20
91	TT-1A646024440	Oil Seal 16 x 22 x 03

Continued on next page

## Hydrostatic Transmission (Tuff-Torq 918-05010)

<b>Ref.</b>	<b>Part Number</b>	<b>Description</b>
95	TT-22351030016	Spring Pin 3.0A x 16
96	TT-22351035040	Roll Pin 3.5 x 40
99	N/A	Sealant
114	TT-1A646083090	Bolt
115	TT-1A646083100	Lock Washer
116	TT-1A646083110	Washer
120	TT-1A646099980	Pump Shaft/Bearing Kit
200	TT-1A646099140	Kit, Seal Incl. 19, 20, 26, 30, 59, 72, 81, 91 & 99
201	TT-1A646099600	Repair Kit, Incl. 24, 31, 38 & 200



Ref.	Part Number	Description	Ref.	Part Number	Description
1.	683-04549	Shield Ass'y, Muffler	10.	751-3141-14	Hose, Extension, Oil Drain
2.	710-0227	Screw, Ab, #8-18, 0.500,	11.	783-06378A	Heat Shield Koh.
3.	710-0599	Screw, Self-tapping, 1/4-20, 0.500,	12.	751-10349	Hose, Fuel, Low Permeation, 1/4
4.	710-04683A	Screw, Self-tapping, 3/8-16, 1.0 Koh.	13.	751-11053A	Deflector, Muffler, Long
	710-1315	Screw, Self-tapping, 3/8-16, 1.25 Kaw.	14.	751-10528A	Muffler, Kohler
5.	712-0271	Nut, Sems, 1/4-20		751-11471A	Muffler, Kawasaki Twin
6.	912-3005	Nut, Flange Lock, 3/8-16 Kaw.	15.	951-10517A	Drain, Oil Koh.
7.	725-0157	Cable, Tie, 3/16 x .05 x 7.4	16.	KH-24-041-49-S	Gasket, Exhaust, Koh.
8.	726-0205	Clamp, Hose, .490 Dia.	17.	710-1314A	Screw, Sockt Head, 5/16-18, .750 Koh.
9.	726-0475	Clamp, 1.0 Dia. Kaw.	18.	751-12089-28	Hose, Vent

# LTX 1050KW Labels

777D15338



777S33185

**⚠ DANGER**  
**ROTATING BLADES CAUSE SERIOUS INJURY OR DEATH**

- DO NOT MOW WHEN CHILDREN OR OTHERS ARE AROUND
- NEVER CARRY CHILDREN EVEN WITH BLADE(S) OFF.
- LOOK DOWN AND BEHIND BEFORE AND WHILE BACKING.
- MOWING IN REVERSE IS NOT RECOMMENDED.

**⚠ WARNING**  
**TO AVOID SERIOUS INJURY OR DEATH**

- GO UP AND DOWN SLOPES, NOT ACROSS.
- AVOID SUDDEN TURNS.
- DO NOT OPERATE THE UNIT WHERE IT COULD SLIP OR TIP.
- IF MACHINE STOPS GOING UPHILL, STOP BLADE(S) AND BACK DOWNHILL SLOWLY.
- KEEP SAFETY DEVICES (GUARDS, SHIELDS, AND SWITCHES, ETC.) IN PLACE AND WORKING.
- REMOVE OBJECTS THAT COULD BE THROWN BY THE BLADE(S).
- KNOW LOCATION AND FUNCTION OF ALL CONTROLS.
- BE SURE BLADE(S) AND ENGINE ARE STOPPED BEFORE PLACING HANDS OR FEET NEAR BLADE(S).
- BEFORE LEAVING OPERATOR'S POSITION, DISENGAGE BLADE(S), ENGAGE PARKING BRAKE, SHUT OFF AND REMOVE KEY.

**READ OPERATOR'S MANUAL**

**⚠ WARNING**  
 Operation of This Equipment May Create Sparks That Can Start Fires Around Dry Vegetation. A Spark Arrestor May Be Required. The Operator Should Contact Local Fire Agencies For Laws or Regulations To Fire Prevention Requirements.

**TO START**

- DISENGAGE BLADES/PTO, (POWER TAKE OFF)
- ENGAGE THE TRACTOR'S PARKING BRAKE.
- ACTIVATE THE CHOKE CONTROL.
- TURN KEY TO START ENGINE. AFTER START RELEASE KEY & DEACTIVATE CHOKE BY PLACING THROTTLE TO FAST "RABBIT" POSITION.

**OPERATING MODES**

**NORMAL MOWING**  
 YOU MUST DISENGAGE BLADES/PTO, (POWER TAKE OFF) BEFORE TRAVELING IN REVERSE.

**REVERSE CAUTION MODE**

- TURN KEY TO REVERSE CAUTION MODE POSITION.
- DEPRESS REVERSE PUSH BUTTON, (RED INDICATOR LIGHT "ON") WHEN RED LIGHT IS "ON" MACHINE CAN BE OPERATED IN REVERSE WITH MOWER BLADES ENGAGED.
- AFTER RESUMING FORWARD OPERATION, RETURN KEY TO "NORMAL MOWING" POSITION.

**NOTE:** IN BOTH MODES, WHEN OPERATOR LEAVES SEAT, ENGINE WILL STOP UNLESS PARKING BRAKE IS SET AND BLADES ARE DISENGAGED.

**LOWER DASH**

**PARKING BRAKE**  
 DEPRESS BRAKE PEDAL, PUSH PARKING BRAKE LEVER DOWN AND RELEASE PEDAL TO LOCK

**CRUISE CONTROL**  
 DEPRESS SPEED CONTROL PEDAL TO DESIRED SPEED, PUSH CRUISE CONTROL LEVER DOWN AND RELEASE PEDAL, PRESS BRAKE OR SPEED CONTROL TO RELEASE

**FOR A LIST OF Optional Attachments, Please Refer To Your Operators Manual.**

777D16533



777D16298



777I23293



777D15269



777D15268



777I23765



777D15400



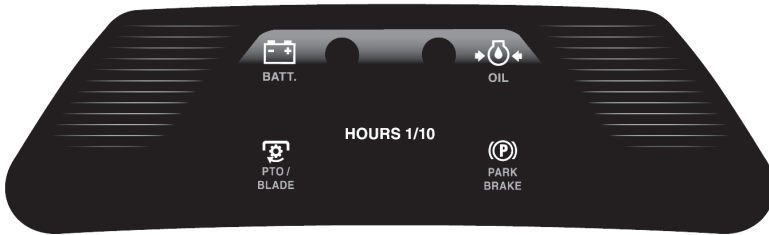
777X45529



777X46245



777I23490



777I23295



777D16883



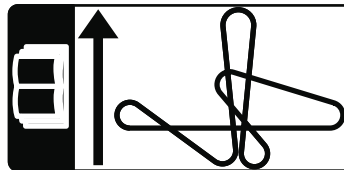
777D16882



777S35012



777I23150



777I23133



777S30503



777X46551

**MODEL LTX 1050KW REPLACEMENT PARTS**

Use only Cub Cadet genuine factory parts

Blades	942-04053C (3)	Oil Filter	KM-49065-7007
Lower Drive Belt	954-04297	Air Filter	KM-11013-7049
Engine To Deck Belt	954-04240	Spark Plug	KM-BPR4ES
Deck Spindles	918-05016	Fuel Filter	KM-49019-0707
Ignition Key	925-2054A	Oil Capacity	70.4 oz
Solenoid	725-04439		

[www.cubcadet.com](http://www.cubcadet.com) X46551

777D15338



777S33233

**⚠ DANGER**  
**ROTATING BLADES CAUSE  
 SERIOUS INJURY OR DEATH**

- DO NOT MOW WHEN CHILDREN OR OTHERS ARE AROUND.
- NEVER CARRY CHILDREN EVEN WITH BLADE(S) OFF.
- LOOK DOWN AND BEHIND BEFORE AND WHILE BACKING.
- MOWING IN REVERSE IS NOT RECOMMENDED.

**TO START**

- DISENGAGE BLADES/PTO, (POWER TAKE OFF)
- ENGAGE THE TRACTOR'S PARKING BRAKE.
- ACTIVATE THE CHOKE CONTROL.
- TURN KEY TO START ENGINE. AFTER START RELEASE KEY & DEACTIVATE CHOKE BY PLACING THROTTLE TO FAST "RABBIT" POSITION.

**OPERATING MODES**

**NORMAL MOWING**  
 YOU MUST DISENGAGE BLADES/PTO, (POWER TAKE OFF) BEFORE TRAVELING IN REVERSE.

**REVERSE CAUTION MODE**  
 1. TURN KEY TO REVERSE CAUTION MODE POSITION.  
 2. DEPRESS REVERSE PUSH BUTTON, (RED INDICATOR LIGHT "ON") WHEN RED LIGHT IS "ON" MACHINE CAN BE OPERATED IN REVERSE WITH MOWER BLADES ENGAGED.  
 IMPORTANT: MOWING IN REVERSE IS NOT RECOMMENDED.  
 3. AFTER RESUMING FORWARD OPERATION, RETURN KEY TO "NORMAL MOWING" POSITION.

**NOTE:** IN BOTH MODES, WHEN OPERATOR LEAVES SEAT, ENGINE WILL STOP UNLESS PARKING BRAKE IS SET AND BLADES ARE DISENGAGED.

**⚠ WARNING**  
**TO AVOID SERIOUS INJURY OR DEATH**

- GO UP AND DOWN SLOPES, NOT ACROSS.
- AVOID SUDDEN TURNS.
- DO NOT OPERATE THE UNIT WHERE IT COULD SLIP OR TIP.
- IF MACHINE STOPS GOING UPHILL, STOP BLADE(S) AND BACK DOWNHILL SLOWLY.
- KEEP SAFETY DEVICES (GUARDS, SHIELDS, AND SWITCHES, ETC.) IN PLACE AND WORKING.
- REMOVE OBJECTS THAT COULD BE THROWN BY THE BLADE(S).
- KNOW LOCATION AND FUNCTION OF ALL CONTROLS.
- BE SURE BLADE(S) AND ENGINE ARE STOPPED BEFORE PLACING HANDS OR FEET NEAR BLADE(S).
- BEFORE LEAVING OPERATOR'S POSITION, DISENGAGE BLADE(S), ENGAGE PARKING BRAKE, SHUT OFF AND REMOVE KEY.

**READ OPERATOR'S MANUAL**

**LOWER DASH**

**PARKING BRAKE**  
 DEPRESS BRAKE PEDAL, PUSH PARKING BRAKE LEVER DOWN AND RELEASE PEDAL TO LOCK

**CRUISE CONTROL**  
 DEPRESS SPEED CONTROL PEDAL TO DESIRED SPEED, PUSH CRUISE CONTROL LEVER DOWN AND RELEASE PEDAL, PRESS BRAKE OR SPEED CONTROL TO RELEASE

**FOR A LIST OF OPTIONAL ATTACHMENTS, PLEASE REFER TO YOUR OPERATORS MANUAL.**

**⚠ WARNING**  
 Operation Of This Equipment May Create Sparks That Can Start Fires Around Dry Vegetation. A Spark Arrestor May Be Required. The Operator Should Contact Local Fire Agencies For Laws Or Regulations To Fire Prevention Requirements.

777D16533



777D16298



777I23293



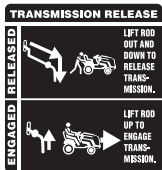
777D15269



777D15268



777I23132



777D15400



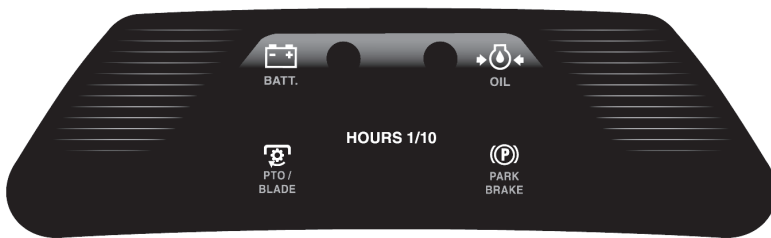
777X45529



777X46245



777I23490



777I23294



777D15417



777D15418



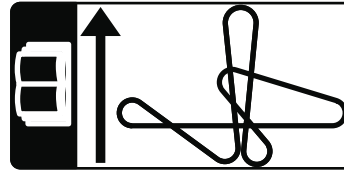
777S35012

**⚠ DANGER**  
**AVOID SERIOUS INJURY OR DEATH**

- KEEP HANDS AND FEET AWAY FROM ROTATING PARTS.
- REMOVE OBJECTS THAT CAN BE THROWN BY THE BLADE IN ANY DIRECTION. WEAR SAFETY GLASSES.
- DO NOT MOW WHEN CHILDREN OR OTHERS ARE AROUND. NEVER CARRY CHILDREN EVEN WITH BLADES OFF.
- USE EXTRA CAUTION ON SLOPES. DO NOT MOW SLOPES GREATER THAN 15°. MOW UP AND DOWN NOT ACROSS. AVOID SUDDEN TURNS, USE LOW SPEED.

READ OPERATOR'S MANUAL. KEEP SAFETY DEVICES IN PLACE AND WORKING.

777I23150



777I23133



777S30503

**⚠ DANGER**  
**KEEP HANDS AND FEET AWAY. DO NOT OPERATE MOWER UNLESS CHUTE DEFLECTOR OR ENTIRE GRASS CATCHER IS IN ITS PROPER PLACE.**

ASSEMBLE CHUTE DEFLECTOR TO THIS UNIT BEFORE OPERATING.

777X44920

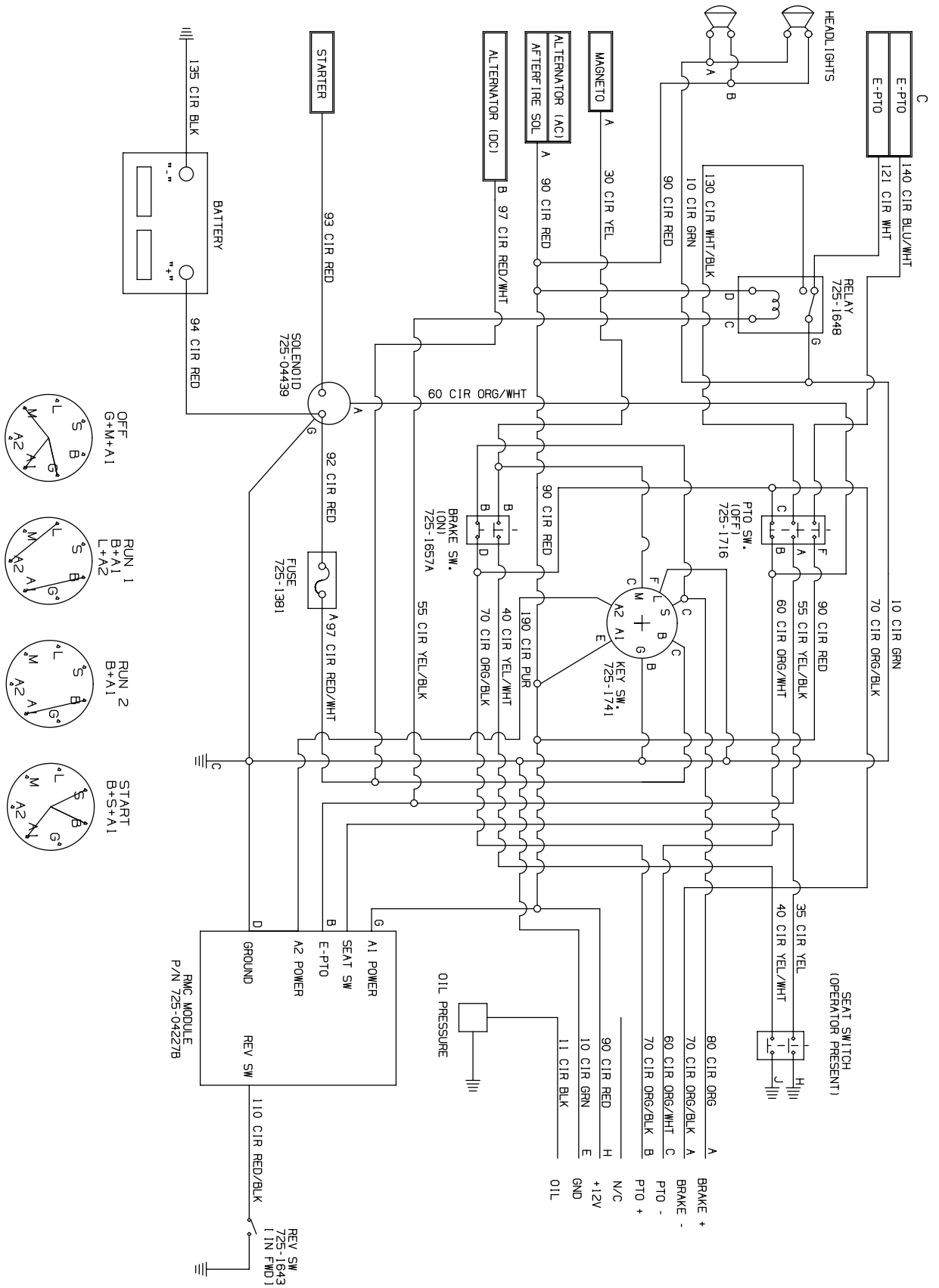
MODEL LTX 1050 REPLACEMENT PARTS

Use only Cub Cadet genuine factory parts

Blades	942-04053C(3)	Oil Filter	KH-12-050-01-S
Lower Drive Belt	954-04207	Air Filter	KH-32-883-03-S1
Engine To Deck Belt	954-04240	Spark Plug	759-3336
Deck Spindles	918-05016	Fuel Filter	KH-25-050-22-S1
Ignition Key	925-2054A	Oil Capacity	57.6 oz
Solenoid	725-04439		

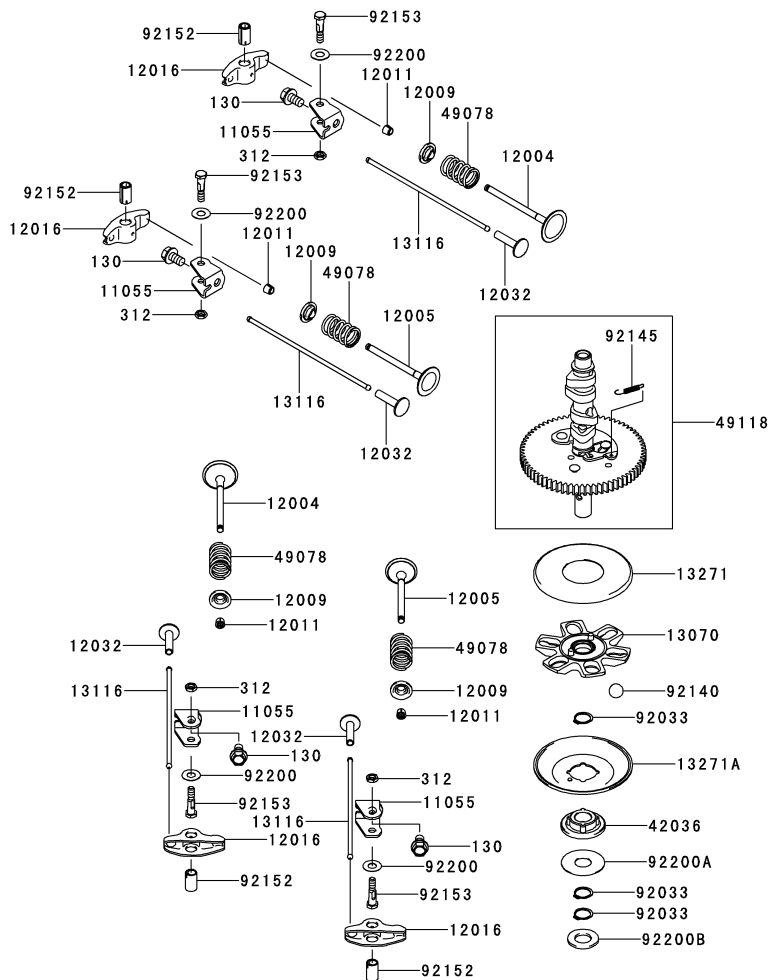
www.cubcadet.com

# LTX 1050/KW Electrical Schematic





# Kawasaki FR691V-AS17 Valve/Camshaft

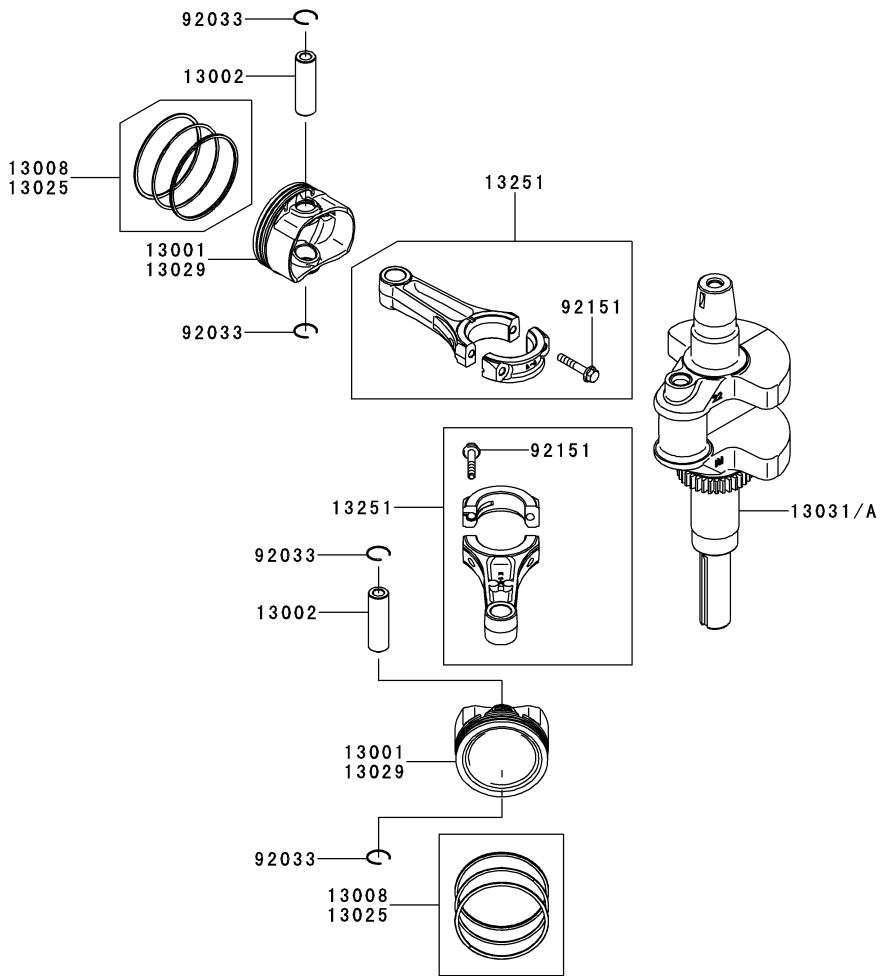


Ref.	Part Number	Description
11055	KM-11055-7009	Bracket
12004	KM-12004-0705	Intake Valve
12005	KM-12005-0720	Exhaust Valve
12009	KM-12009-7001	Valvespring Retainer
12011	KM-12011-2056	Collet
12016	KM-12016-2066	Rocker Arm
12032	KM-12032-7001	Tappet
13070	KM-13070-7017	Governor Guide
13116	KM-13116-7007	Push Rod
13271	KM-13271-7007	Plate
13271A	KM-13271-7021	Governor Plate
42036	KM-42036-7021	Sleeve

Ref.	Part Number	Description
49078	KM-49078-7002	Engine Valve Spring, IN
49118	KM-49118-7022	Complete Camshaft
92033	KM-92033-7001	Snap Ring
92140	KM-92140-7005	Ball
92145	KM-92145-7001	Spring
92152	KM-92152-1689	Collar
92153	KM-92153-7100	Bolt, 6 X 29.5
92200	KM-92200-2151	Washer, 8.1 X 18 X 0.5
92200A	KM-92200-7009	Washer, 16 X 42 X 0.91
92200B	KM-92200-7048	Washer, 16.3 X 30 X 2.28
130	KM-130AA0814	Flanged Bolt, 8 X 14
312	KM-312AA0600	Hex Nut, 6mm

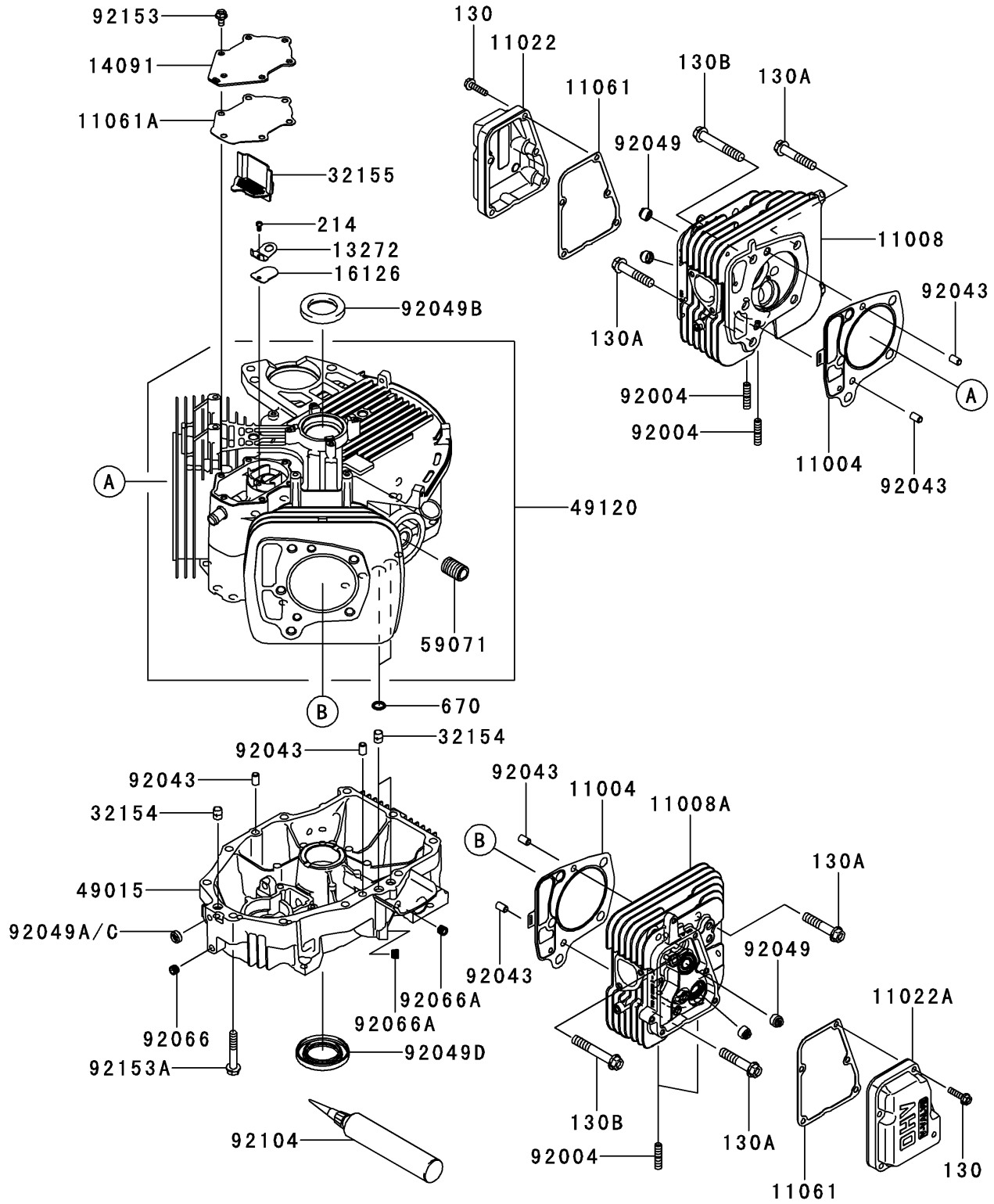


# Kawasaki FR691V-AS17 Piston/Crankshaft



Ref.	Part Number	Description
13001	KM-13001-7027	Engine Piston
13002	KM-13002-0704	Piston Pin
13008	KM-13008-7005	Piston Ring Set
13025	KM-13025-7009	Piston Ring Set, L ,0.5
13029	KM-13029-7010	Engine Piston, L, 0.5
13031	KM-13031-0747	Complete Crankshaft
13031A	KM-13031-0747	Complete Crankshaft
13251	KM-13251-7025	Connecting Rod Assembly
92033	KM-92033-7018	Snap Ring
92151	KM-92151-7017	Bolt, 6 X 35

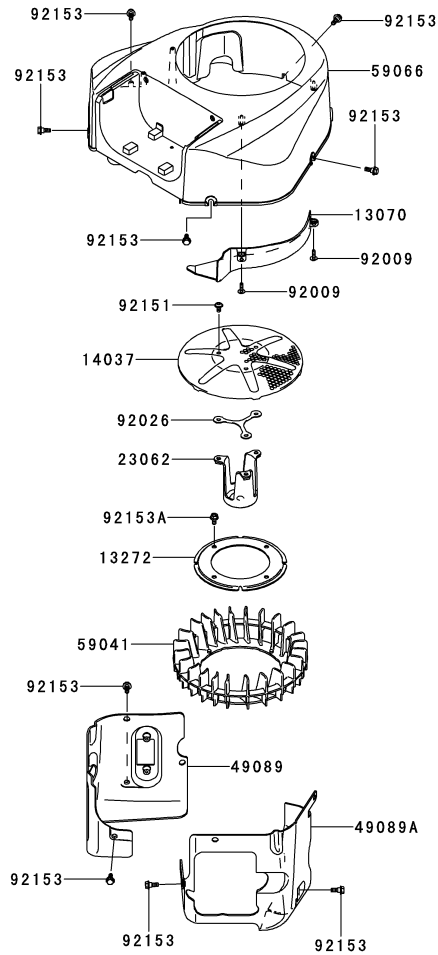
# Kawasaki FR691V-AS17 Cylinder/Crankcase



## Kawasaki FR691V-AS17 Cylinder/Crankcase

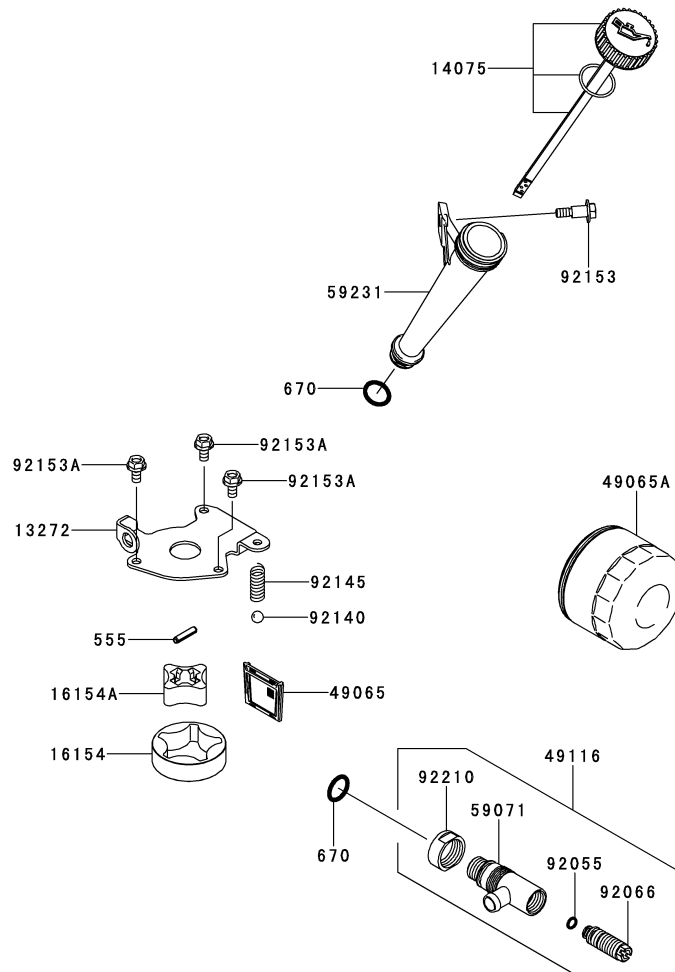
Ref.	Part Number	Description
11004	KM-11004-7026	Head Gasket
11008	KM-11008-7039	Complete Cylinder Head, #1
11008A	KM-11008-7040	Complete Cylinder Head, #2
11022	KM-11022-0710	Rocker Case, #1
11022A	KM-11022-7020	Rocker Case, #2
11061	KM-11061-7083	Rocker Case Gasket
11061A	KM-11061-7094	Breather Gasket
13272	KM-13272-1374	Breather Plate
14091	KM-14091-7064	Breather Cover
16126	KM-16126-7020	Breather Valve
32154	KM-32154-7019	Pipe
32155	KM-32155-7003	Breather Pipe
49015	KM-49015-7106	Crankcase Cover
49120	KM-49120-0733	Complete Crankcase
59071	KM-59071-7025	Joint
92004	KM-92004-7024	Stud, 8x30
92043	KM-92043-1263	Pin
92049	KM-92049-7001	Oil Seal, RVC 26 x 11 x 10.2
92049A	KM-92049-7019	Oil Seal, SO 8 x 14 x 5 HS
92049B	KM-92049-7010	Oil Seal, SD 35 x 48 x 8 RHS
92049C	KM-92049-7019	Oil Seal, 8 x 14 x 5 HS
92049D	KM-92049-7028	Oil Seal, 38 x 62 x 8 MTCLV
92066	KM-92066-7023	Plug
92066A	KM-92066-7026	Plug
92104	KM-92104-7001	Gasket, TB1217H
92153	KM-92153-7043	Bolt, 6 x 12
92153A	KM-92153-7054	Bolt, 8 x 50
130	KM-130AA0625	Flanged Bolt, 6 x 25
130A	KM-130CA1050	Flanged Bolt, 10 x 50
130B	KM-130CA1065	Flanged Bolt, 10 x 65
214	KM-214AA0408	Pan Screw +-, 4 x 8
670	KM-670B2011	O-Ring, 11mm

# Kawasaki FR691V-AS17 Cooling Equipment



Ref.	Part Number	Description
13070	KM-13070-7019	Cooling Air Guide
13272	KM-13272-7006	Fan Plate
14037	KM-14037-70089H	Screen
23062	KM-23062-7022	Complete Bracket
49089	KM-49089-7079	Engine Shroud
49089A	KM-49089-7080	Engine Shroud
59041	KM-59041-7014	Fan
59066	KM-59066-7052	Fan Housing
92009	KM-92009-2303	Screw
92026	KM-92026-7007	Spacer
92151	KM-92151-7012	Bolt, 6 X 12
92153	KM-92153-7007	Bolt
92153A	KM-92153-7043	Bolt, 6 X 12

# Kawasaki FR691V-AS17 Lubrication Equipment

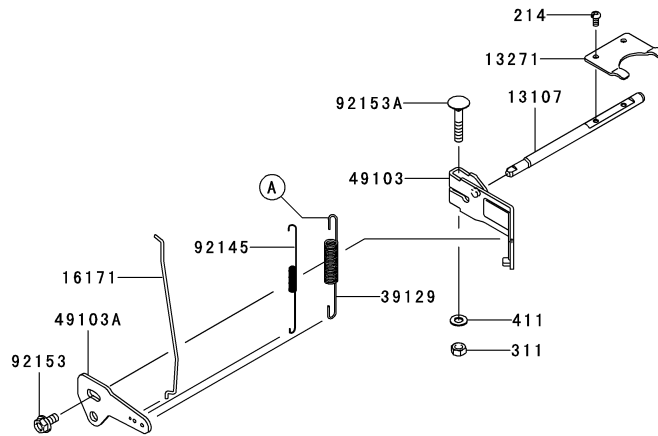
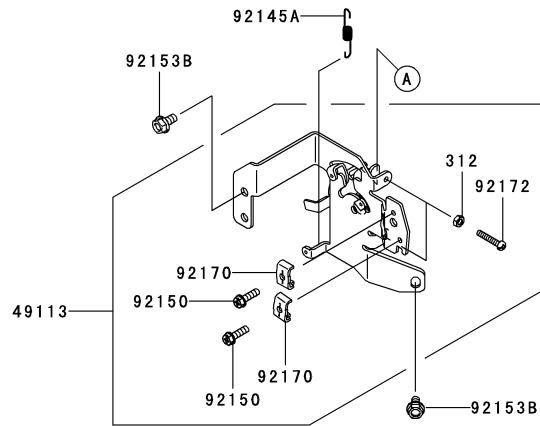


Ref.	Part Number	Description
13272	KM-13272-7011	Rotor Plate
14075	KM-14075-7013	Oil Gauge Cap Assembly
16154	KM-16154-7010	Outer Pump Rotor
16154A	KM-16154-7011	Inner Pump Rotor
49065	KM-49065-7006	Oil Filter
49065A	KM-49065-7007	Oil Filter
49116	KM-49116-7001	Valve Assembly
59071	KM-59071-7008	Joint
59231	KM-59231-0712	Filler

Ref.	Part Number	Description
92055	KM-92055-7002	O-Ring, 6MM
92066	KM-92066-7007	Plug
92140	KM-92140-7003	Ball
92145	KM-92145-7002	Spring
92153	KM-92153-7008	Bolt
92153A	KM-92153-7043	Bolt, 6 X 12
92210	KM-92210-7012	Nut, M22
555	KM-555A0420	Spring Pin, 4 X 20
670	KM-670D2016	O-Ring, 16mm

# Kawasaki FR691V-AS17 Control Equipment

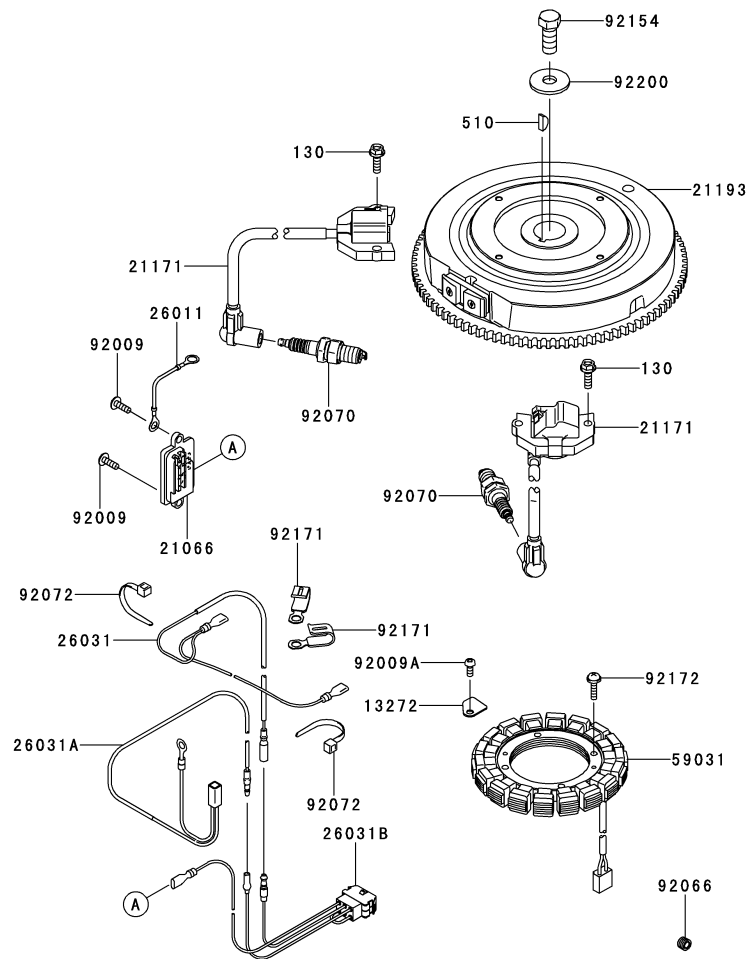
E0170-A652A



Ref.	Part Number	Description
13107	KM-13107-7047	Shaft
13271	KM-13271-7038	Plate
16171	KM-16171-7022	Link
39129	KM-39129-7035	Governor Spring
49103	KM-49103-7014	Governor Arm
49103A	KM-49103-7015	Governor Arm
49113	KM-49113-0727	Complete Control Panel
92145	KM-92145-7057	Spring
92145A	KM-92145-7058	Spring
92150	KM-92150-2182	Bolt, 5 X 18

Ref.	Part Number	Description
92153	KM-92153-0009	Bolt, 6 X 12
92153A	KM-92153-7033	Bolt, 6 X 35
92153B	KM-92153-7043	Bolt, 6 X 12
92170	KM-92170-7001	Clamp
92172	KM-92172-0792	Screw, 5 X 35
214	KM-214AA0408	Pan Screw +-, 4 X 8
311	KM-311AA0600	Hex Nut, 6mm
312	KM-312AA0500	Hex Nut, 5mm
411	KM-411AA0600	Plain Washer, 6mm

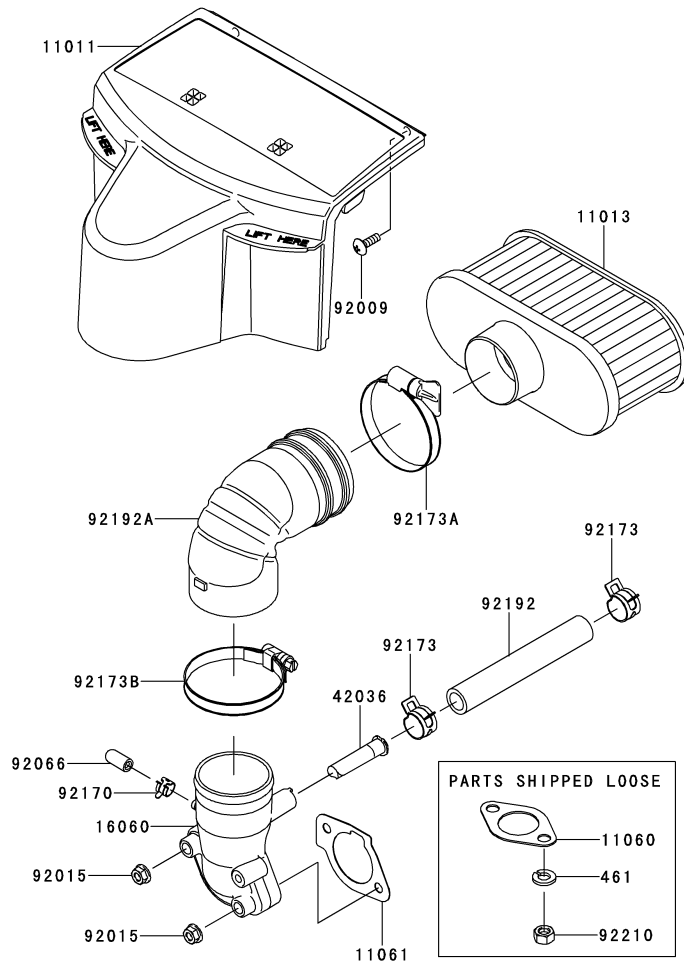
# Kawasaki FR691V-AS17 Electric Equipment



Ref.	Part Number	Description
13272	KM-13272-7012	Plate
21066	KM-21066-7017	Voltage Regulator
21171	KM-21171-0711	Ignition Coil Assembly
21193	KM-21193-7038	Flywheel Assembly
26011	KM-26011-7025	Lead Wire, L = 95
26031	KM-26031-7040	Harness
26031A	KM-26031-7041	Harness
26031B	KM-26031-1625	Harness
59031	KM-59031-7017	Charging Coil
92009	KM-92009-2303	Screw

Ref.	Part Number	Description
92009A	KM-92009-2308	Screw
92066	KM-92066-7026	Plug
92070	KM-BPR4ES	Spark Plug
92072	KM-92072-7003	Band
92154	KM-92154-7003	Bolt, 12 X 30
92171	KM-92171-7008	Clamp
92172	KM-92172-7018	Screw, 5 X 20
92200	KM-92200-7002	Washer
130	KM-130AA0620	Flanged Bolt, 6 X 20
510	KM-510A5100	Woodruff Key

# Kawasaki FR691V-AS17 Air Filter/Muffler

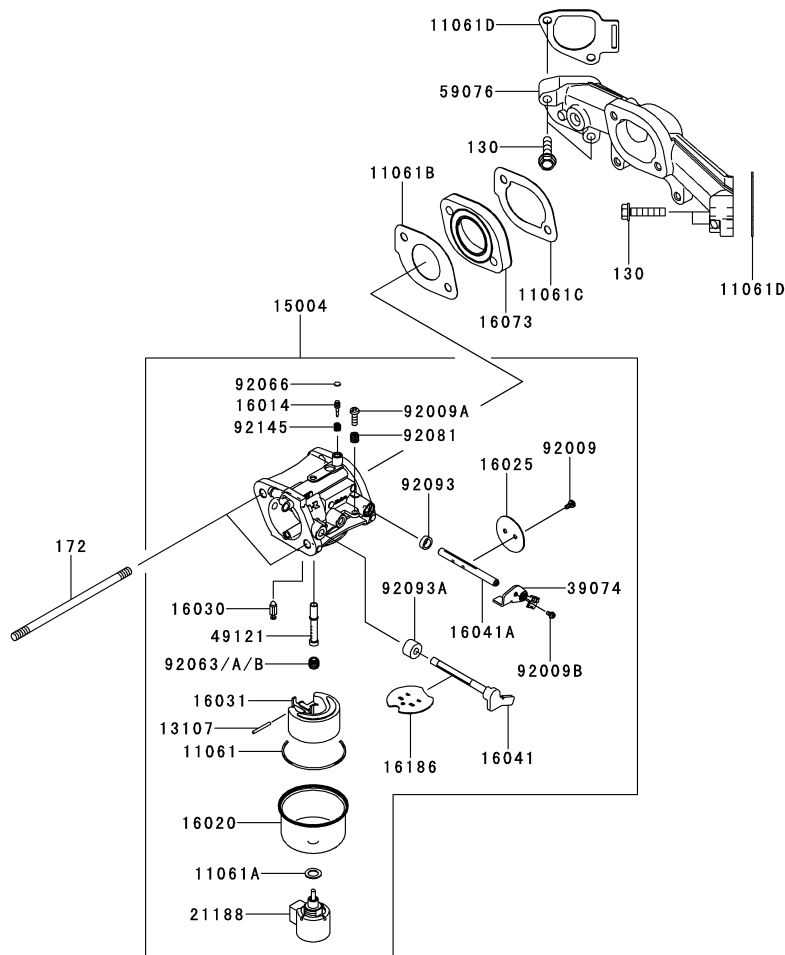


Ref.	Part Number	Description
11011	KM-11011-7065	Air Filter Case
11013	KM-99999-0384	Air Filter Element
11060	KM-11060-7016	Muffler Gasket
11061	KM-11061-7086	Carburetor/Pipe Intake Gasket
16060	KM-16060-7038	Intake Pipe
42036	KM-42036-7022	Breather Sleeve
92009	KM-92009-2303	Screw
92015	KM-92015-1367	Nut
92066	KM-92066-0095	Plug

Ref.	Part Number	Description
92170	KM-92170-2042	Clamp
92173	KM-92173-7003	Clamp
92173A	KM-92173-1001	Clamp
92173B	KM-92173-1001	Clamp
92192	KM-92192-7146	Tube, 12.6 X 18.6 X 118
92192A	KM-92192-7165	Air Filter Tube
92210	KM-92210-7027	Nut, M8
461	KM-461DA0800	Spring Washer, 8mm



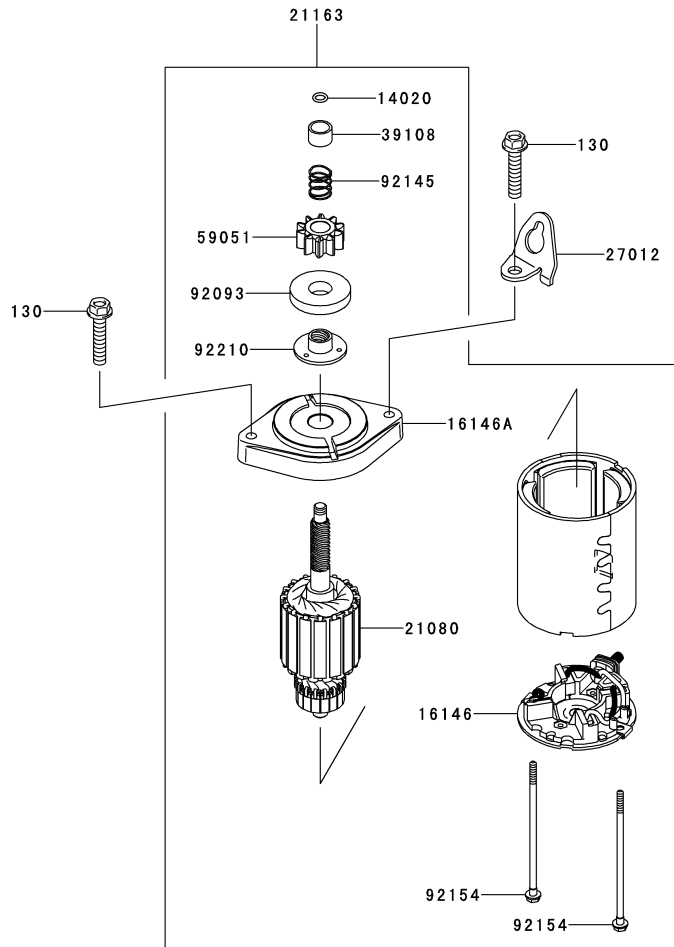
# Kawasaki FR691V-AS17 Carburetor



Ref.	Part Number	Description
11061	KM-11061-7009	Chamber Gasket
11061A	KM-11061-7010	Screw Gasket
11061B	KM-11061-7087	Insulator Gasket
11061C	KM-11061-7088	Insulator/Manifold Gasket
11061D	KM-11061-7093	Manifold Gasket
13107	KM-13107-7018	Shaft
15004	KM-15004-0829	Carburetor Assembly
16014	KM-16014-7010	Pilot Air Screw
16020	KM-16020-7003	Float Chamber
16025	KM-16025-7017	Throttle Valve
16030	KM-16030-7003	Float Valve
16031	KM-16031-7002	Float
16041	KM-16041-0007	Choke Carburetor Shaft
16041A	KM-16041-7051	Throttle Carburetor Shaft
16073	KM-16073-7013	Insulator
16186	KM-16186-7006	Choke Valve Assembly
21188	KM-21188-7002	Solenoid

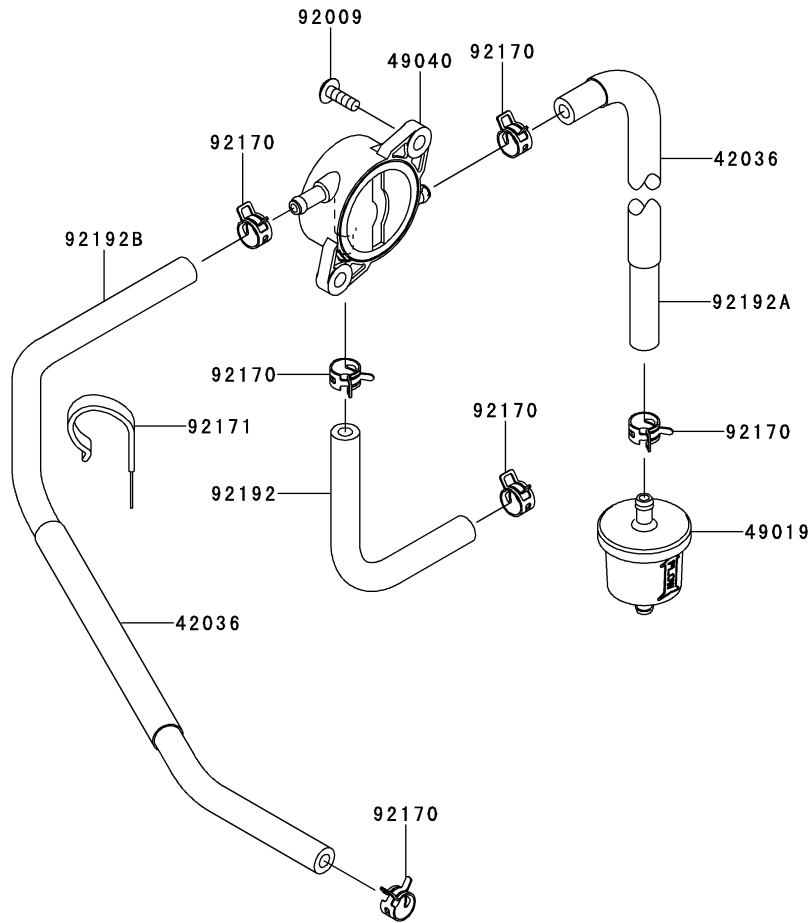
Ref.	Part Number	Description
39074	KM-39074-7001	Throttle Lever Assembly
49121	KM-49121-7018	Main Nozzle
59076	KM-59076-7019	Intake Manifold
92009	KM-92009-2083	Screw
92009A	KM-92009-2349	Screw
92009B	KM-92009-2402	Screw
92063	KM-92063-7141	Main Jet, #122
92063A	KM-92063-7142	Main Jet, #124
92063B	KM-92063-7149	Main Jet, #120
92066	KM-92066-7032	Plug
92081	KM-92081-2234	Spring
92093	KM-92093-2100	Seal
92093A	KM-92093-7003	Seal
92145	KM-92145-2122	Spring
130	KM-130AA0630	Flanged Bolt, 6 X 30
172	KM-172BA06115	Stud Bolt, 6 X 115

# Kawasaki FR691V-AS17 Starter



Ref.	Part Number	Description
14020	KM-14020-7002	Retainer
16146	KM-16146-7027	Cover Assembly
16146A	KM-16146-7030	Cover Assembly
21080	KM-21080-0003	Armature
21163	KM-21163-0727	Electric Starter
27012	KM-27012-7008	Hook
39108	KM-39108-0552	Spring Retainer
59051	KM-59051-7034	Spur Gear
92093	KM-92093-7007	Seal
92145	KM-92145-7060	Spring
92154	KM-92154-7001	Bolt
92210	KM-92210-7017	Nut
130	KM-130AA0840	Flanged Bolt, 8 X 40

# Kawasaki FR691V-AS17 Fuel Tank/Fuel Valve



Ref.	Part Number	Description
42036	KM-42036-7015	Sleeve
49019	KM-49019-0014	Fuel Filter
49040	KM-49040-7008	Fuel Pump
92009	KM-92009-2303	Screw
92170	KM-92170-2009	Clamp
92171	KM-92171-7005	Clamp
92192	KM-92192-7148	Tube, 6.4 X 12.7 X 150
92192A	KM-92192-7172	Tube, 6.35 X 12.7 X 185
92192B	KM-92192-7188	Tube, 6.35 X 12.7 X 390

# Kawasaki FR691V-AS17 Engine Labels

56033



56071



56080



Ref.	Part Number	Description
56033	KM-56033-7001	Manual Label
56071	KM-56071-0216	Warning Label
56080	KM-56080-0815	Brand Label

# Notes

---

---

---

---

---

---

---

---

---

---

---

---

---

---

---

---

---

---

---

---

---

---

---

---

---

---







To order replacement parts, call a Customer Support Representative at (800) 965-4CUB.  
Locate your nearest Cub Cadet dealer at (877) 282-8684  
or visit [www.cubcadet.com](http://www.cubcadet.com) to find the nearest Cub Cadet dealer in your area.

---

**CUB CADET LLC, P.O. BOX 361131 CLEVELAND, OHIO 44136-0019**

---



## Free Manuals Download Website

<http://myh66.com>

<http://usermanuals.us>

<http://www.somanuals.com>

<http://www.4manuals.cc>

<http://www.manual-lib.com>

<http://www.404manual.com>

<http://www.luxmanual.com>

<http://aubethermostatmanual.com>

Golf course search by state

<http://golfingnear.com>

Email search by domain

<http://emailbydomain.com>

Auto manuals search

<http://auto.somanuals.com>

TV manuals search

<http://tv.somanuals.com>