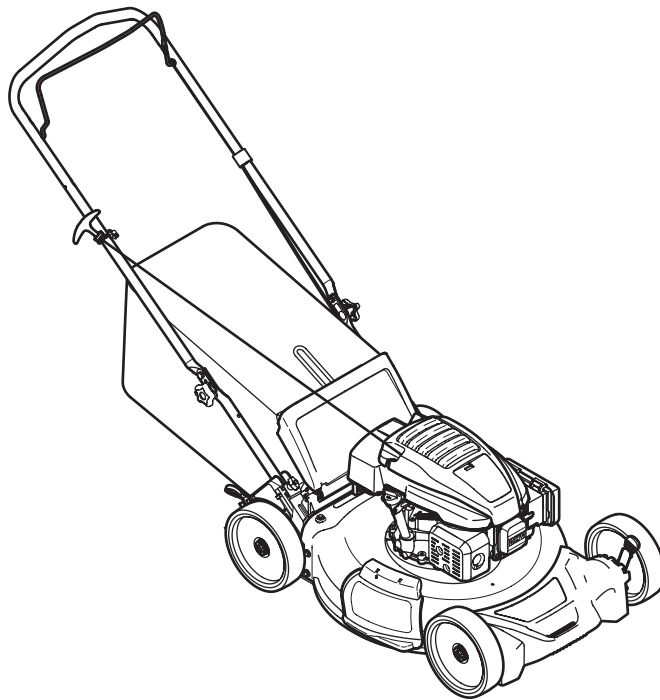

Cub Cadet[®]

ILLUSTRATED PARTS MANUAL



Push and Self-Propelled Mowers

CUB CADET LLC, P.O. BOX 361131 CLEVELAND, OHIO 44136-0019

To The Owner

Thank You

Thank you for purchasing a Cub Cadet Lawn Mower. It was carefully engineered to provide excellent performance when properly operated and maintained.

All information in this manual is relative to the most recent product information available at the time of printing. Please be aware that this Illustrated Part's Manual may cover a range of product specifications for various models.

Components listed and/or illustrated in this manual may not be applicable to all models. We reserve the right to change product specifications, designs and equipment without notice and without incurring obligation.

Throughout this manual, all references to *right* (RH) and *left* (LH) are observed from the operating position.

Table of Contents

| | |
|---|--------------------|
| Model SC 100 (11A-A92) | 4 |
| Model SC 500 HW (12ABD22) | 6 |
| Model SC 500 EZ (12ACC6S) | 8 |
| Model SC 500 EZ (12ACC6S) | 10 |
| Model SC 500 Z (12ABC62) | 12 |
| Labels | 14 |
| Engine Model 5X65RU..... | 16 |

Record Product Information

To ease in ordering replacement parts, please locate the model plate on the equipment and record the information in the provided area to the right. You can locate the model plate by looking beneath the seat.

MODEL NUMBER

| | | | | | | | | | | | |
|--|--|--|--|--|--|--|--|--|--|--|--|
| | | | | | | | | | | | |
|--|--|--|--|--|--|--|--|--|--|--|--|

SERIAL NUMBER

| | | | | | | | | | | | |
|--|--|--|--|--|--|--|--|--|--|--|--|
| | | | | | | | | | | | |
|--|--|--|--|--|--|--|--|--|--|--|--|

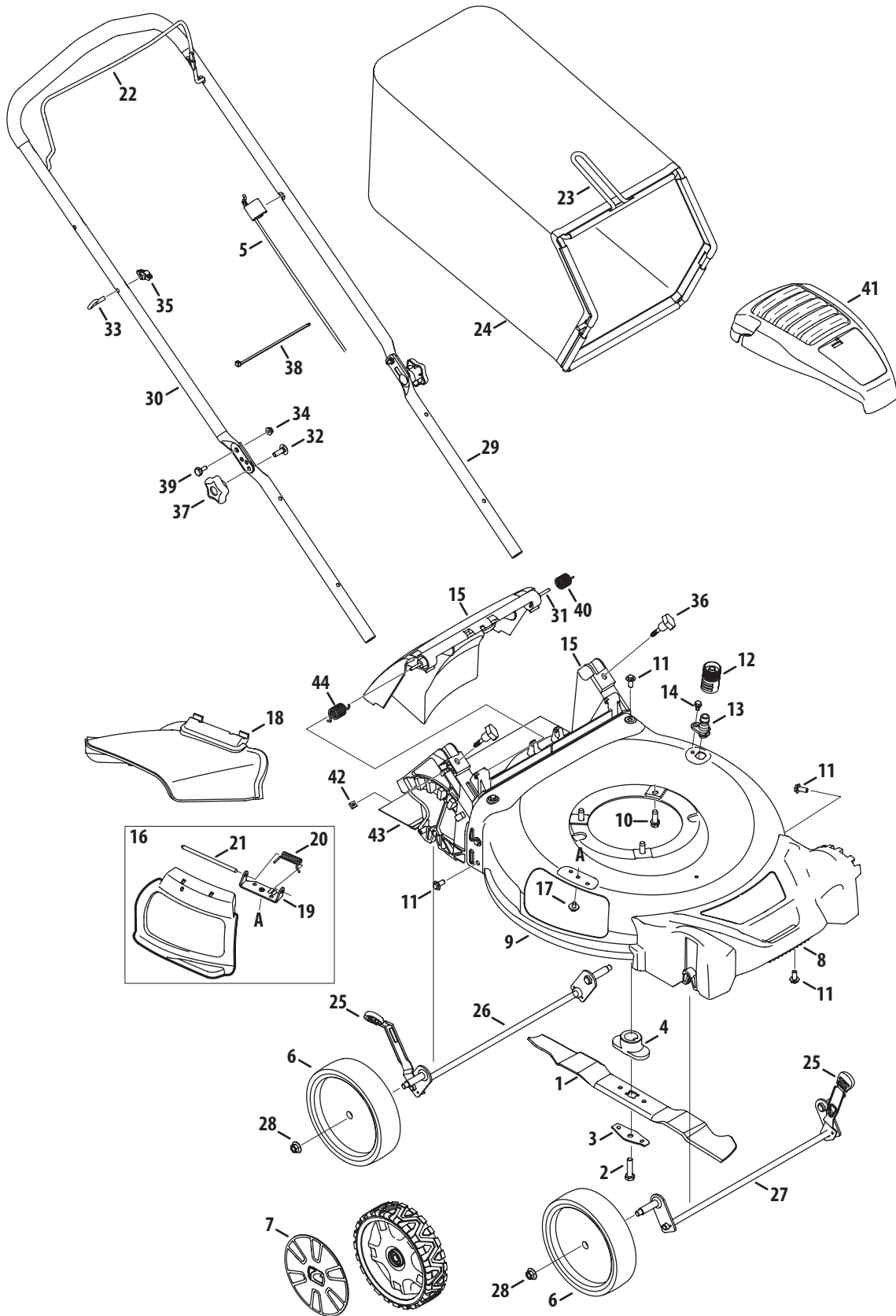
Painted Parts

When ordering painted service parts, a four digit color suffix must be added to the part number (e.g. 783-XXXX-0637). Please refer to the table below for current color codes:

| | | | |
|------|--------------------|------|-----------------------------------|
| 0637 | Black | 0685 | Blue (Cub Cadet) |
| 4021 | Yellow (Cub Cadet) | 0691 | Black Jack (Cub Cadet Commercial) |
| 0499 | Beige (Cub Cadet) | | |

This page left intentionally blank.

Model SC 100 (11A-A92)

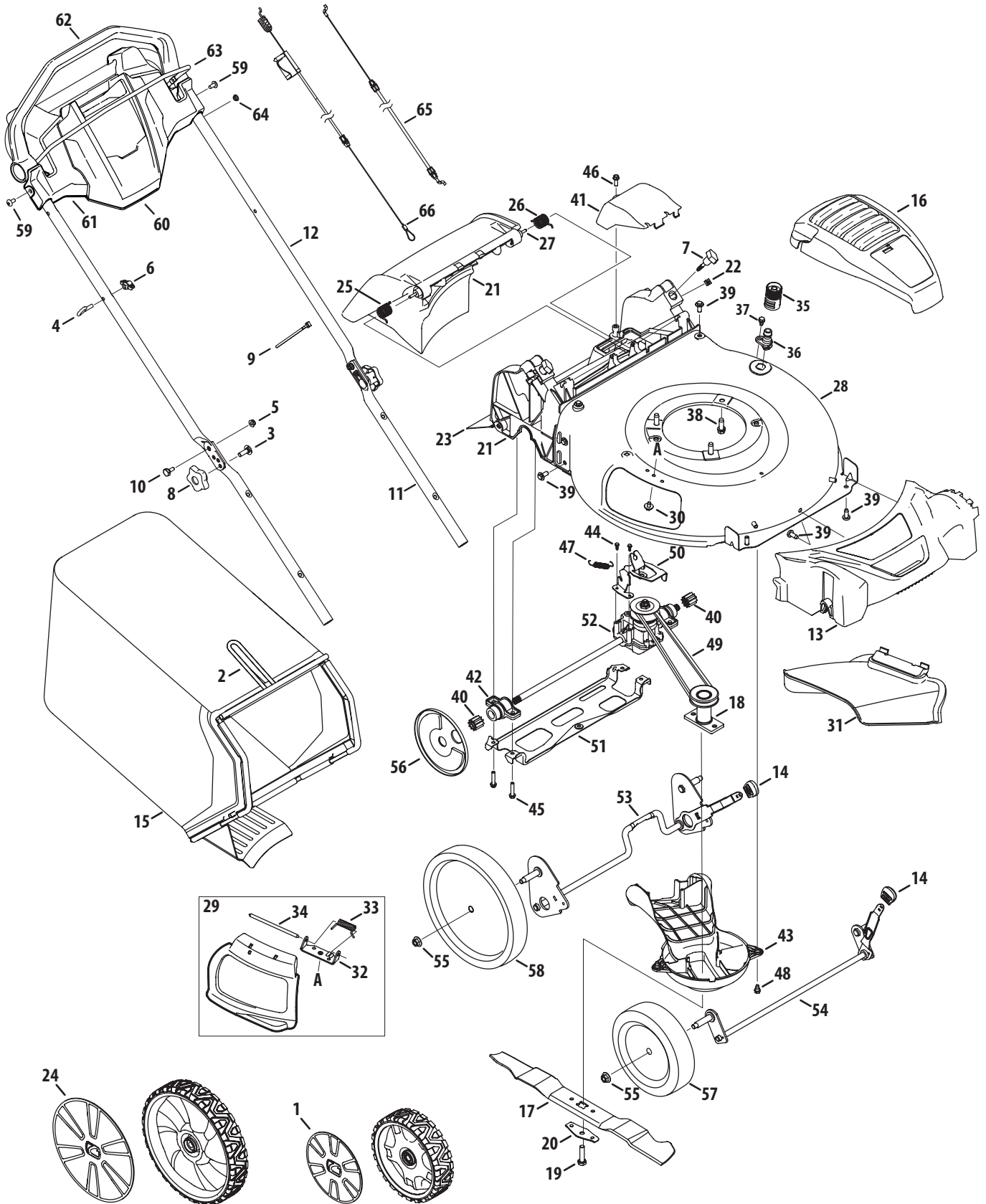


Model SC 100 (11A-A92)

| Ref No. | Part Number | Description |
|---------|-------------|------------------------------|
| 1 | 942-0741A | Mulching Blade |
| 2 | 710-1044 | Screw, 3/8-24 x 1.50 |
| 3 | 736-0524B | Blade Bell Support |
| 4 | 748-04096 | Blade Adapter |
| 5 | 946-04703A | Control Cable |
| 6 | 634-04659 | Wheel, 8 x2 |
| 7 | 731-08570 | Hubcap |
| 8 | 731-09258 | Front Cover |
| 9 | 787-01874B | 21" Deck |
| 10 | 710-04683A | Screw, tt, 3/8-16 x 1.00 |
| 11 | 710-04995A | Screw, 5/16-14 x .750 |
| 12 | 921-04041 | Water Nozzle Adapter |
| 13 | 731-07487 | Water Nozzle |
| 14 | 738-04278 | Scr., Shldr., 1/4-20 x .50 |
| 15 | 631-04369A | Rear Discharge Door Assembly |
| 16 | 987-02516A | Mulch Plug (Incl. 19-21) |
| 17 | 710-05073 | Screw |
| 18 | 731-07131 | Side Discharge Chute |
| 19 | 787-01779 | Chute Deflector Bracket |
| 20 | 732-1014C | Torsion Spring |
| 21 | 747-0710A | Hinge Pin |
| 22 | 931-05119 | Blade Control |

| Ref No. | Part Number | Description |
|---------|-------------|-----------------------------------|
| 23 | 647-04271 | Grass Catcher Frame |
| 24 | 764-04082A | Grass Bag |
| 25 | 720-05014 | Adjustment Knob |
| 26 | 911-04142A | Rear Axle Assembly |
| 27 | 911-05022 | Front Axle Assembly |
| 28 | 712-04217 | Flange Lock Nut, 3/8-16 |
| 29 | 749-04608A | Lower Handle |
| 30 | 749-04682A | Upper Handle |
| 31 | 747-05183 | Pivot Rod |
| 32 | 710-04998 | Carriage Screw ,5/16-18 |
| 33 | 710-1205 | Rope Guide |
| 34 | 712-04064 | Nut, Flange Lock, 1/4-20 |
| 35 | 720-0279 | Knob |
| 36 | 720-05066 | Wing Nut |
| 37 | 720-05009 | Star Knob |
| 38 | 725-0157 | Cable Tie |
| 39 | 738-04419A | Shdr. Screw, .375 x .126 x 1/4-20 |
| 40 | 732-05062A | Torsion Spring - LH |
| 41 | 731-09094A | Engine Shroud |
| 42 | 712-04222 | Nut, Sq., 1/4-20 |
| 43 | 731-07203 | Trail Shield |
| 44 | 732-05061A | Torsion Spring - RH |

Model SC 500 HW (12ABD22)

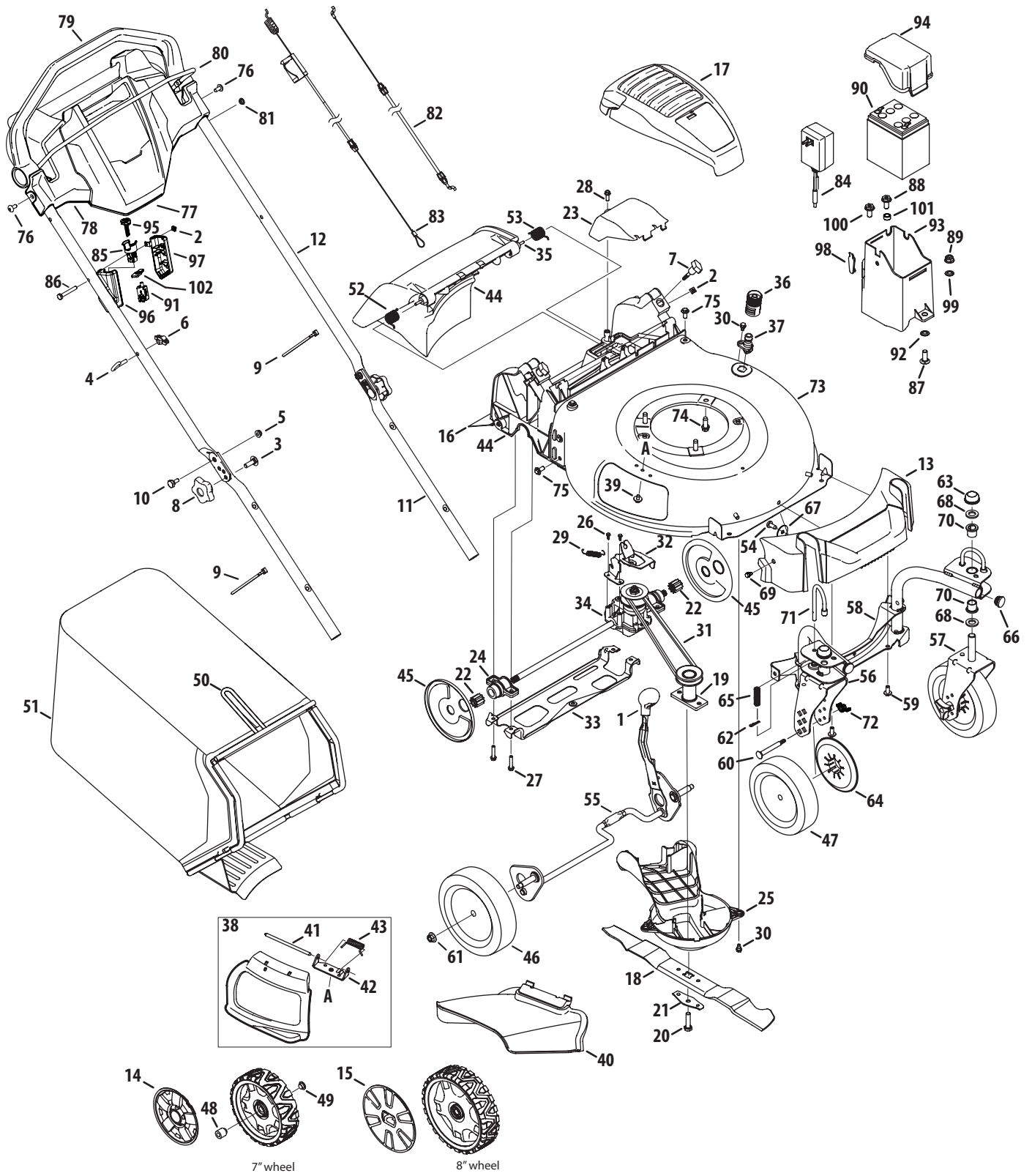


Model SC 500 HW (12ABD22)

| Ref No. | Part Number | Description |
|---------|-------------|-----------------------------------|
| 1 | 731-08570 | Hubcap, 8" |
| 2 | 747-05362A | Grass Catcher Frame |
| 3 | 710-04998 | Carriage Screw ,5/16-18 |
| 4 | 710-1205 | Rope Guide |
| 5 | 712-04064 | Nut, Flange Lock, 1/4-20 |
| 6 | 720-0279 | Knob |
| 7 | 720-05066 | Wing Nut |
| 8 | 720-05009 | Star Knob |
| 9 | 725-0157 | Cable Tie |
| 10 | 738-04419A | Shdr. Screw, .375 x .126 x 1/4-20 |
| 11 | 749-04608A | Lower Handle |
| 12 | 749-05084 | Upper Handle |
| 13 | 731-09258 | Front Cover |
| 14 | 720-05014 | Adjustment Knob |
| 15 | 964-05005 | Grass Bag |
| 16 | 731-09094A | Engine Shroud |
| 17 | 942-0741A | Mulching Blade |
| 18 | 687-02220 | Blade Adapter |
| 19 | 710-1044 | Screw, 3/8-24 x 1.50 |
| 20 | 736-0524B | Blade Bell Support |
| 21 | 631-04553A | Rear Discharge Door Assembly |
| 22 | 712-04222 | Nut, Sq., 1/4-20 |
| 23 | 731-07203 | Trail Shield |
| 24 | 731-08571 | Hubcap, 11" |
| 25 | 732-05061A | Torsion Spring - RH |
| 26 | 732-05062A | Torsion Spring - LH |
| 27 | 747-05183 | Pivot Rod |
| 28 | 787-02002A | 21" Deck |
| 29 | 987-02516A | Mulch Plug (Incl. 32-34) |
| 30 | 710-05073 | Screw |
| 31 | 731-07131 | Side Discharge Chute |
| 32 | 787-01779 | Chute Deflector Bracket |
| 33 | 732-1014C | Torsion Spring |

| Ref No. | Part Number | Description |
|---------|-------------|-----------------------------------|
| 34 | 747-0710A | Hinge Pin |
| 35 | 921-04041 | Water Nozzle Adapter |
| 36 | 731-07487 | Water Nozzle |
| 37 | 738-04278 | Scr., Shldr., 1/4-20 x .50 |
| 38 | 710-04683A | Screw, tt, 3/8-16 x 1.00 |
| 39 | 710-05425A | Screw, 5/16-14 x .750 |
| 40 | 917-04849 | Spur Gear, 9T |
| 41 | 731-08175 | Transmission Cover |
| 42 | 631-04501A | Bearing Assembly |
| 43 | 631-04512C | Engine Baffle |
| 44 | 710-04374 | Screw, Hex Washer, .159 x .43 |
| 45 | 710-04774 | Screw, 1/4-15 x 1.25 |
| 46 | 710-0895 | Screw, 1/4-15 x .750 |
| 47 | 732-05150 | Exten. Spring, 2.405 |
| 48 | 738-04278 | Scr., Shldr., 1/4-20 x .50 |
| 49 | 954-04282 | V-Belt |
| 50 | 787-01868A | Transmission Bracket |
| 51 | 787-01915A | Rear Support Bracket |
| 52 | 918-07000 | Transmission Assembly |
| 53 | 911-05029 | Rear Axle Assembly |
| 54 | 911-05022 | Front Axle Assembly |
| 55 | 712-04217 | Flange Lock Nut, 3/8-16 |
| 56 | 731-07731C | Wheel Dust Cover |
| 57 | 634-04665 | Front Wheel, 8 x2 |
| 58 | 934-04699 | Rear Wheel, 11 x 2 |
| 59 | 710-1017 | Screw, 1/4-14 x .625 |
| 60 | 931-09863 | Trim Console |
| 61 | 931-09891 | handle Console |
| 62 | 731-09730 | Drive Handle |
| 63 | 747-06338 | Blade Control |
| 64 | 748-05047 | Shoulder Spacer, .18 x .315 x .09 |
| 65 | 946-05105 | Control Cable |
| 66 | 946-05121 | Drive Cable |

Model SC 500 EZ (12ACC6S)



Model SC 500 EZ (12ACC6S)

| Ref No. | Part Number | Description |
|---------|-------------|-----------------------------------|
| 1 | 720-05025 | Adjustment Knob |
| 2 | 712-04222 | Nut, Sq., 1/4-20 |
| 3 | 710-04998 | Carriage Screw ,5/16-18 |
| 4 | 710-1205 | Rope Guide |
| 5 | 712-04064 | Nut, Flange Lock, 1/4-20 |
| 6 | 720-0279 | Knob |
| 7 | 720-05066 | Wing Nut |
| 8 | 720-05009 | Star Knob |
| 9 | 725-0157 | Cable Tie |
| 10 | 738-04419A | Shdr. Screw, .375 x .126 x 1/4-20 |
| 11 | 749-04608A | Lower Handle |
| 12 | 749-05084 | Upper Handle |
| 13 | 731-09621 | Front Cover |
| 14 | 731-09360 | Hubcap, 7" |
| 15 | 731-08570 | Hubcap, 8" |
| 16 | 731-07203 | Trail Shield |
| 17 | 731-09094A | Engine Shroud |
| 18 | 942-0741A | Mulching Blade |
| 19 | 687-02220 | Blade Adapter |
| 20 | 710-1044 | Screw, 3/8-24 x 1.50 |
| 21 | 736-0524B | Blade Bell Support |
| 22 | 917-04852 | Spur Gear, 10T |
| 23 | 731-08175 | Transmission Cover |
| 24 | 631-04501A | Bearing Assembly |
| 25 | 631-04512C | Engine Baffle |
| 26 | 710-04374 | Screw, Hex Washer, .159 x .43 |
| 27 | 710-04774 | Screw, 1/4-15 x 1.25 |
| 28 | 710-0895 | Screw, 1/4-15 x .750 |
| 29 | 732-05150 | Exten. Spring, 2.405 |
| 30 | 738-04278 | Scr., Shldr., 1/4-20 x .50 |
| 31 | 954-04282 | V-Belt |
| 32 | 787-01868A | Transmission Bracket |
| 33 | 787-01915A | Rear Support Bracket |
| 34 | 918-07000 | Transmission Assembly |
| 35 | 747-05183 | Pivot Rod |
| 36 | 921-04041 | Water Nozzle Adapter |
| 37 | 731-07487 | Water Nozzle |
| 38 | 987-02516A | Mulch Plug (Incl. 41-43) |
| 39 | 710-05073 | Screw |
| 40 | 731-07131 | Side Discharge Chute |

| Ref No. | Part Number | Description |
|---------|-------------|------------------------------------|
| 41 | 747-0710A | Hinge Pin |
| 42 | 787-01779 | Chute Deflector Bracket |
| 43 | 732-1014C | Torsion Spring |
| 44 | 631-04553A | Rear Discharge Door Assembly |
| 45 | 731-07795 | Wheel Dust Cover |
| 46 | 934-04714 | Rear Wheel, 8 x 2 |
| 47 | 634-04733 | Front Wheel, 7 x 2 |
| 48 | 750-06036 | Caster Hub, Long |
| 49 | 750-06065 | Caster Hub, Short |
| 50 | 747-05362A | Grass Catcher Frame |
| 51 | 964-05005 | Grass Bag |
| 52 | 732-05061A | Torsion Spring - RH |
| 53 | 732-05062A | Torsion Spring - LH |
| 54 | 710-04484 | Self Tapping Screw, 5/16-18 x .750 |
| 55 | 911-04189 | Rear Axle Assembly |
| 56 | 682-9024 | Caster Bracket Assembly, RH |
| 57 | 682-9026 | Caster Bracket Assembly, LH |
| 58 | 687-05033 | Caster Bracket Assembly |
| 59 | 710-05425A | Screw, 5/16-14 x .750 |
| 60 | 911-1146 | Caster Axle, .374 Dia. x 2.59 |
| 61 | 712-04217 | Flange Lock Nut, 3/8-16 |
| 62 | 914-0104 | Cotter Pin, .072 Dia. x 1.13 Lg. |
| 63 | 726-0214 | Push Cap, 5/8 |
| 64 | 731-09480 | Dust Cover, 7" |
| 65 | 932-0306A | Compr. Sprng., .531 OD x 1.75 Lg |
| 66 | 735-0246A | Plug |
| 67 | 736-0362 | Washer, Flat, .330 x 1.25 x .06 |
| 68 | 736-0366 | Flat Washer, .640 x 1.12 x .125 |
| 69 | 738-04502 | Shdr. Screw, .50 x 1/4-20 |
| 70 | 741-0685 | Flange Bearing, .631 ID |
| 71 | 747-0924 | Lock Pin: Front Wheel |
| 72 | 712-0397A | Wing Nut, 1/4-20 w/Bell Washer |
| 73 | 687-05086 | 21" Deck |
| 74 | 710-04683A | Screw, tt, 3/8-16 x 1.00 |
| 75 | 710-05425A | Screw, 5/16-14 x .750 |
| 76 | 710-1017 | Screw, 1/4-14 x .625 |
| 77 | 931-09863 | Trim Console |
| 78 | 931-09891 | Handle Console |
| 79 | 731-09730 | Drive Handle |
| 80 | 747-06338 | Blade Control |

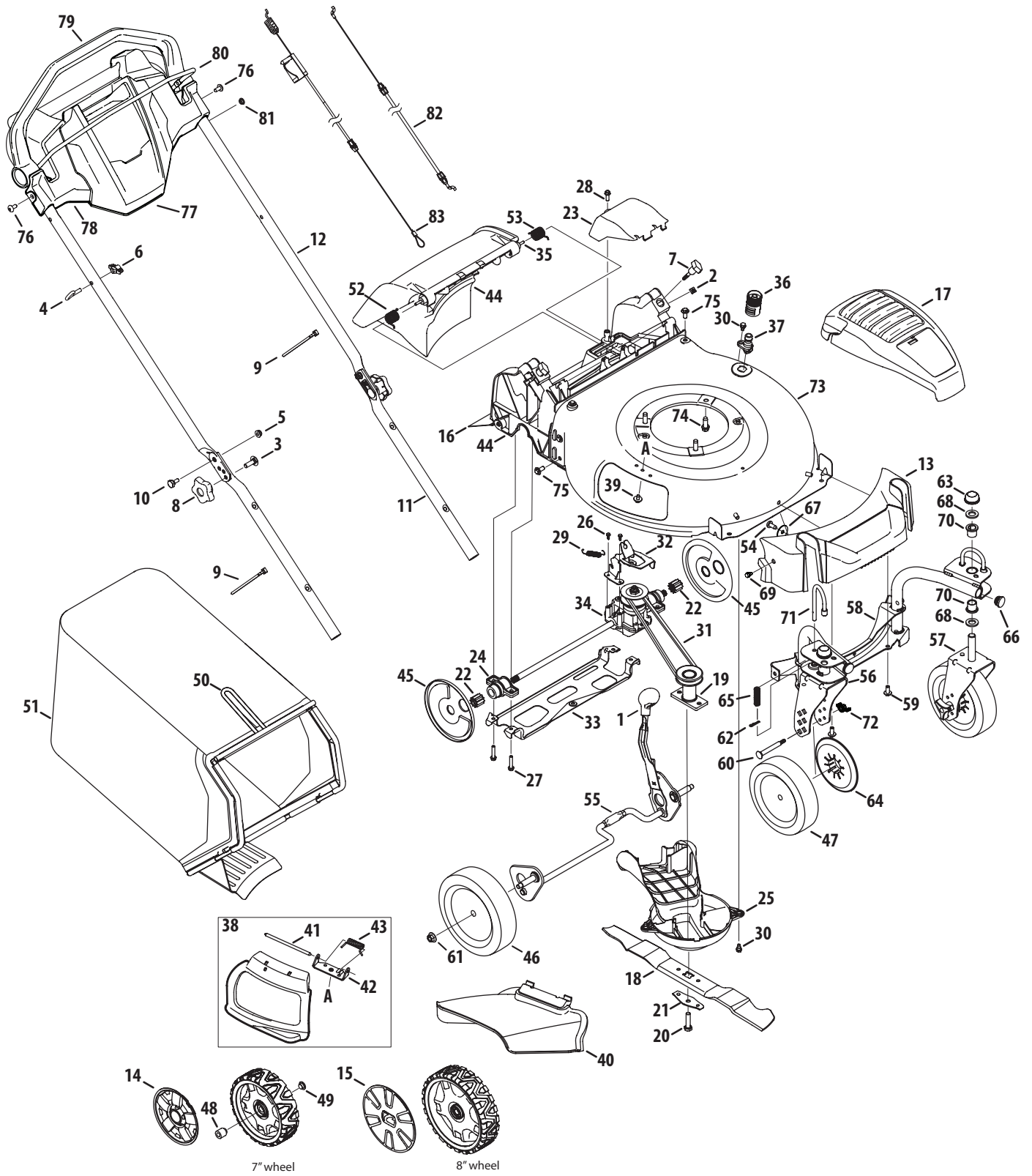
Continued on next page

Model SC 500 EZ (12ACC6S)

| Ref No. | Part Number | Description |
|---------|-------------|-----------------------------------|
| 81 | 748-05047 | Shoulder Spacer, .18 x .315 x .09 |
| 82 | 946-05106 | Control Cable |
| 83 | 946-05121 | Drive Cable |
| 84 | 725-06121 | Battery Charger |
| 85 | 931-05131 | Key Switch |
| 86 | 710-0136 | Screw, 1/4-20 x 1.75 |
| 87 | 710-0276 | Bolt, Carr., 5/16-18 x 1.00 |
| 88 | 710-04995A | Screw, 5/16-14 x .750 |
| 89 | 912-0429 | Nut, FlgIk., 5/16-18 |
| 90 | 725-04903 | Battery |
| 91 | 725-06114 | Plunger Switch |
| 92 | 726-0201 | Speed Nut |
| 93 | 731-07135 | Battery Housing |
| 94 | 731-07154A | Battery Housing Top |
| 95 | 731-09728 | Key |
| 96 | 731-09753 | Electric Start Housing, RH |
| 97 | 731-09755 | Electric Start Housing, LH |
| 98 | 735-04213A | Lid Seal |
| 99 | 736-0242 | Washer, Bell, .340 x .872 x .080 |
| 100 | 738-04431A | Scr., Sldr., 5/16-14 x .972 |
| 101 | 750-05377 | Spacer, .340 x .460 x .246 |
| 102 | 787-03162 | Retainer Bracket |
| — | 925-06140 | Wire Harness (Not Shown) |
| — | 725-05106 | Fuse (Not Shown) |

This page left intentionally blank.

Model SC 500 Z (12ABC62)






Model SC 500 Z (12ABC62)

| Ref No. | Part Number | Description |
|---------|-------------|-----------------------------------|
| 1 | 720-05025 | Adjustment Knob |
| 2 | 712-04222 | Nut, Sq., 1/4-20 |
| 3 | 710-04998 | Carriage Screw ,5/16-18 |
| 4 | 710-1205 | Rope Guide |
| 5 | 712-04064 | Nut, Flange Lock, 1/4-20 |
| 6 | 720-0279 | Knob |
| 7 | 720-05066 | Wing Nut |
| 8 | 720-05009 | Star Knob |
| 9 | 725-0157 | Cable Tie |
| 10 | 738-04419A | Shdr. Screw, .375 x .126 x 1/4-20 |
| 11 | 749-04608A | Lower Handle |
| 12 | 749-05084 | Upper Handle |
| 13 | 731-09621 | Front Cover |
| 14 | 731-09360 | Hubcap, 7" |
| 15 | 731-08570 | Hubcap, 8" |
| 16 | 731-07203 | Trail Shield |
| 17 | 731-09094A | Engine Shroud |
| 18 | 942-0741A | Mulching Blade |
| 19 | 687-02220 | Blade Adapter |
| 20 | 710-1044 | Screw, 3/8-24 x 1.50 |
| 21 | 736-0524B | Blade Bell Support |
| 22 | 917-04852 | Spur Gear, 10T |
| 23 | 731-08175 | Transmission Cover |
| 24 | 631-04501A | Bearing Assembly |
| 25 | 631-04512C | Engine Baffle |
| 26 | 710-04374 | Screw, Hex Washer, .159 x .43 |
| 27 | 710-04774 | Screw, 1/4-15 x 1.25 |
| 28 | 710-0895 | Screw, 1/4-15 x .750 |
| 29 | 732-05150 | Exten. Spring, 2.405 |
| 30 | 738-04278 | Scr., Shldr., 1/4-20 x .50 |
| 31 | 954-04282 | V-Belt |
| 32 | 787-01868A | Transmission Bracket |
| 33 | 787-01915A | Rear Support Bracket |
| 34 | 918-07000 | Transmission Assembly |
| 35 | 747-05183 | Pivot Rod |
| 36 | 921-04041 | Water Nozzle Adapter |
| 37 | 731-07487 | Water Nozzle |
| 38 | 987-02516A | Mulch Plug (Incl. 41-43) |
| 39 | 710-05073 | Screw |
| 40 | 731-07131 | Side Discharge Chute |
| 41 | 747-0710A | Hinge Pin |
| 42 | 787-01779 | Chute Deflector Bracket |

| Ref No. | Part Number | Description |
|---------|-------------|------------------------------------|
| 43 | 732-1014C | Torsion Spring |
| 44 | 631-04553A | Rear Discharge Door Assembly |
| 45 | 731-07795 | Wheel Dust Cover |
| 46 | 934-04714 | Rear Wheel, 8 x 2 |
| 47 | 634-04733 | Front Wheel, 7 x 2 |
| 48 | 750-06036 | Caster Hub, Long |
| 49 | 750-06065 | Caster Hub, Short |
| 50 | 747-05362A | Grass Catcher Frame |
| 51 | 964-05005 | Grass Bag |
| 52 | 732-05061A | Torsion Spring - RH |
| 53 | 732-05062A | Torsion Spring - LH |
| 54 | 710-04484 | Self Tapping Screw, 5/16-18 x .750 |
| 55 | 911-04189 | Rear Axle Assembly |
| 56 | 682-9024 | Caster Bracket Assembly, RH |
| 57 | 682-9026 | Caster Bracket Assembly, LH |
| 58 | 687-05033 | Caster Bracket Assembly |
| 59 | 710-05425A | Screw, 5/16-14 x .750 |
| 60 | 911-1146 | Caster Axle, .374 Dia. x 2.59 |
| 61 | 712-04217 | Flange Lock Nut, 3/8-16 |
| 62 | 914-0104 | Cotter Pin, .072 Dia. x 1.13 Lg. |
| 63 | 726-0214 | Push Cap, 5/8 |
| 64 | 731-09480 | Dust Cover, 7" |
| 65 | 932-0306A | Compr. Sprng., .531 OD x 1.75 Lg |
| 66 | 735-0246A | Plug |
| 67 | 736-0362 | Washer, Flat, .330 x 1.25 x .06 |
| 68 | 736-0366 | Flat Washer, .640 x 1.12 x .125 |
| 69 | 738-04502 | Shdr. Screw, .50 x 1/4-20 |
| 70 | 741-0685 | Flange Bearing, .631 ID |
| 71 | 747-0924 | Lock Pin: Front Wheel |
| 72 | 712-0397A | Wing Nut, 1/4-20 w/Bell Washer |
| 73 | 687-05069A | 21" Deck |
| 74 | 710-04683A | Screw, tt, 3/8-16 x 1.00 |
| 75 | 710-05425A | Screw, 5/16-14 x .750 |
| 76 | 710-1017 | Screw, 1/4-14 x .625 |
| 77 | 931-09863 | Trim Console |
| 78 | 931-09891 | handle Console |
| 79 | 731-09730 | Drive Handle |
| 80 | 747-06338 | Blade Control |
| 81 | 748-05047 | Shoulder Spacer, .18 x .315 x .09 |
| 82 | 946-05105 | Control Cable |
| 83 | 946-05121 | Drive Cable |

Labels

777S32652

| | |
|---|--|
| ⚠ WARNING | |
|  | Read and follow Operating Instructions before running engine. |
|  | Gasoline is flammable. Allow engine to cool at least 2 minutes before refueling. |
|  | Engines emit carbon monoxide. DO NOT run in enclosed area. |

777D18543



21" DECK with **SMART JET DECK WASH SYSTEM**
see operator's manual for instructions

777I23349



10W30

777D18546



ELECTRIC START

777I25151



ELECTRIC START

STARTING INSTRUCTIONS

- 1 SQUEEZE BLADE CONTROL HANDLE TO UPPER HANDLE
- 2 ENGAGE STARTING MECHANISM TO START ENGINE AND ENGAGE BLADE
- 3 RELEASE BLADE CONTROL HANDLE TO STOP ENGINE AND BLADE

CHARGE 8 TO 10 HOURS AT BEGINNING AND END OF SEASON, AND AS NEEDED.
DO NOT CHARGE BATTERY FOR MORE THAN 12 HOURS.

CHARGER

777I20292

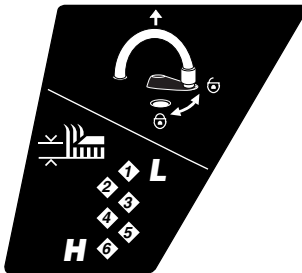


Diagram showing blade control handle movement and gear positions: L, 1, 2, 3, 4, 5, 6, H.

777I20745

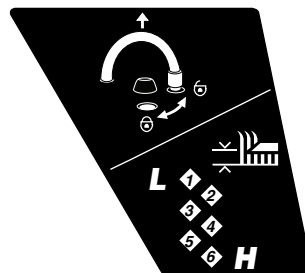


Diagram showing blade control handle movement and gear positions: L, 1, 2, 3, 4, 5, 6, H.

777D18407



Cub Cadet
signature cut[®] series

SC 100
WALK BEHIND

159cc
PERFORMANCE TUNED ENGINE

3 YEAR LIMITED WARRANTY
WITH SURESTART[®] GUARANTEE[®]

777D18409



Cub Cadet
signature cut[®] series

SC 500 hw
REAR DRIVE • HIGH WHEELS

159cc
PERFORMANCE TUNED ENGINE

3 YEAR LIMITED WARRANTY
WITH SURESTART[®] GUARANTEE[®]

777D18410



Cub Cadet
signature cut[®] series

SC 500 z
REAR DRIVE • CASTER WHEELS

159cc
PERFORMANCE TUNED ENGINE

3 YEAR LIMITED WARRANTY
WITH SURESTART[®] GUARANTEE[®]

777D19380



Cub Cadet
signature cut[®] series

SC 500 ez
ELECTRIC START • CASTER WHEELS

159cc
PERFORMANCE TUNED ENGINE

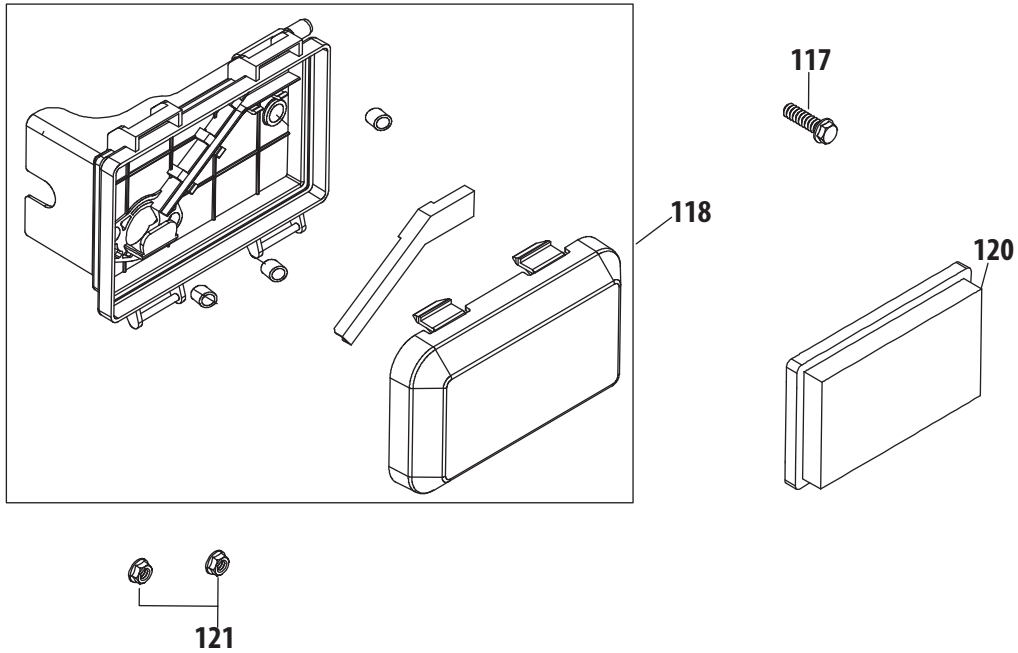
3 YEAR LIMITED WARRANTY
WITH SURESTART[®] GUARANTEE[®]

777D19364

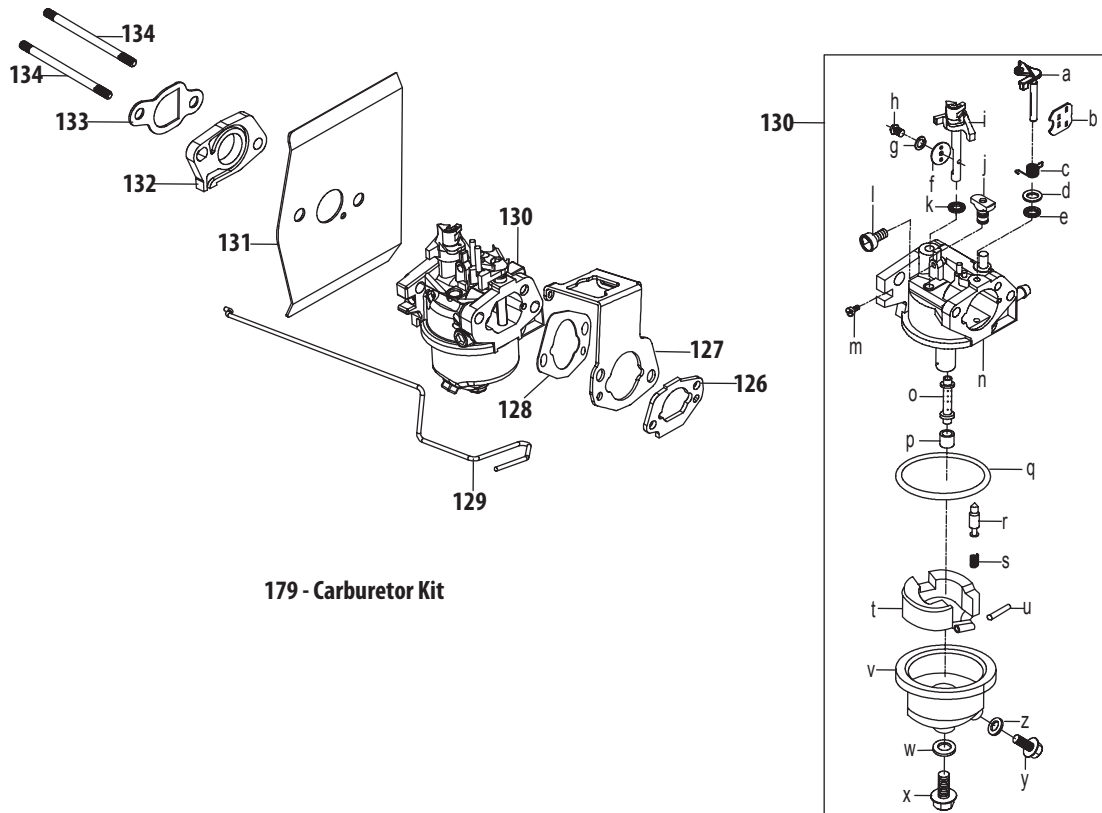


EFFORTLESS DRIVE CONTROL
MYSPEED

Engine Model 5X65RU Air Cleaner



| Ref. | Part Number | Description |
|------|-------------|-----------------------------------|
| 117 | 710-04969 | Bolt M6X30 Af Base/Coil/E-Starter |
| 118 | 951-14439 | Air Cleaner Housing Assembly |
| 120 | 951-10298 | Air Cleaner Kit |
| 121 | 712-05015 | Nut M6X10Mm Starter/Carb/Muff |



179 - Carburetor Kit

| Ref. | Part Number | Description |
|------|-------------|--|
| 126 | 951-14419 | Air Filter Base Gasket |
| 127 | 951-14420 | Choke Temp Control Bracket |
| 128 | 951-14422 | Choke Temp Control Bracket Gasket |
| 129 | 951-14421 | Choke Temp Control Linkage |
| 130 | 951-14423 | Carburetor Assembly |
| 131 | 951-14424 | Carburetor Gasket |
| 132 | 951-11738 | Carburetor Insulator |
| 133 | 951-11528 | Carburetor Insulator Gasket |
| 134 | 951-14425 | Carb Stud M6x87 |
| 179 | 951-14446 | Carburetor Kit (Incl.e,j,k,l,o,p,q,r,s,t,u,w,z) |
| a | n/a | Choke Shaft |
| b | n/a | Choke Plate |
| c | n/a | Choke Return Spring |
| d | n/a | Choke Shaft Washer |
| e | n/a | Choke Shaft Fiber O-Ring |
| f | n/a | Throttle Plate |
| g | n/a | Throttle Plate Lock Washer |
| h | n/a | Screw M3X6 Throttle Plate |

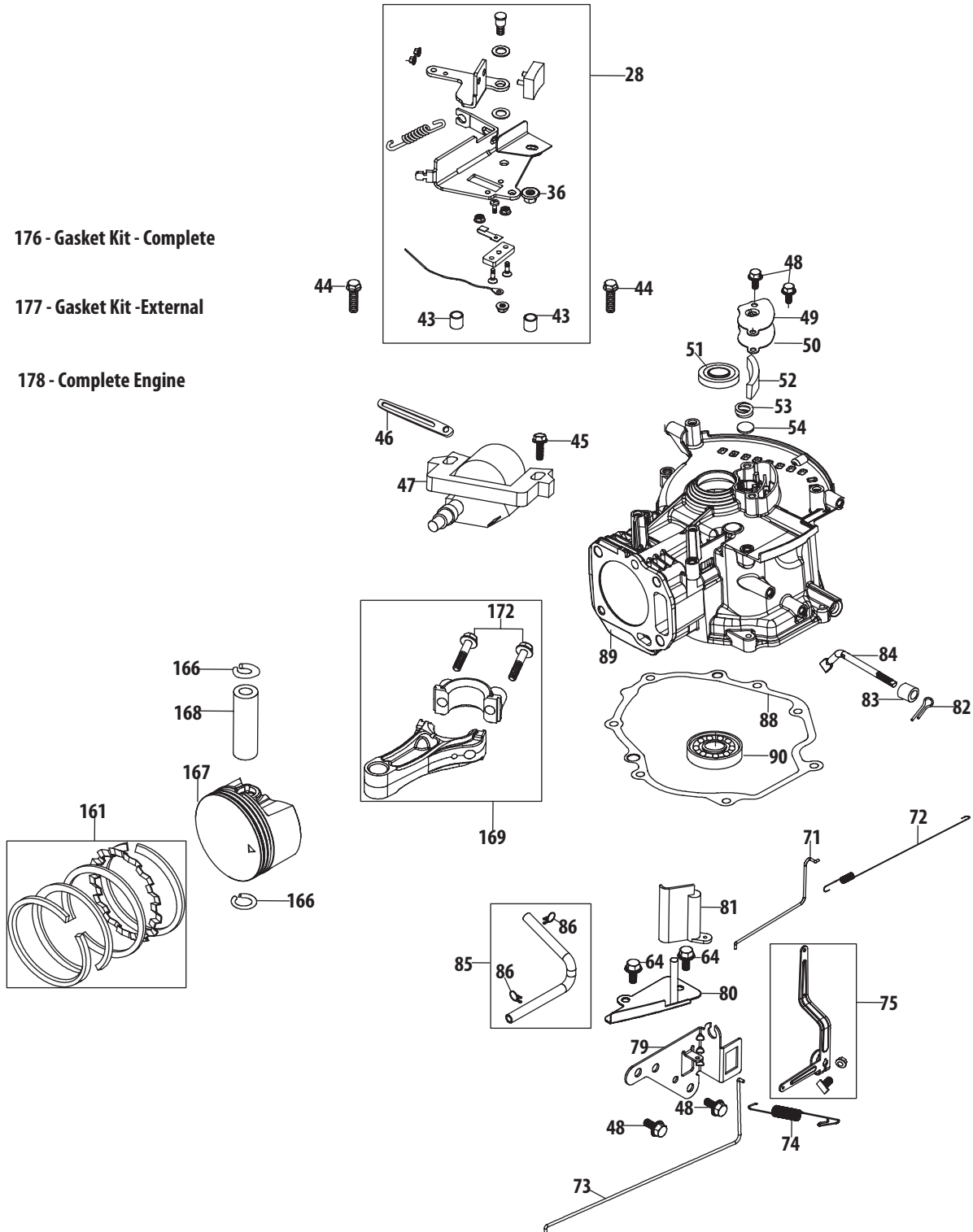
| Ref. | Part Number | Description |
|------|-------------|-----------------------------|
| i | n/a | Throttle Shaft |
| j | n/a | Idle Jet Assembly |
| k | n/a | Throttle Shaft Fiber O-Ring |
| l | n/a | Idle Speed Adjusting Screw |
| m | n/a | Idle Mixture Screw |
| n | n/a | Carburetor Body |
| o | n/a | Emulsion Tube |
| p | n/a | Main Jet |
| q | n/a | Fuel Bowl O-Ring |
| r | n/a | Needle Valve |
| s | n/a | Needle Valve Spring |
| t | n/a | Float |
| u | n/a | Float Pin |
| v | n/a | Fuel Bowl |
| w | n/a | Fuel Bowl Gasket |
| x | n/a | Fuel Bowl Mounting Bolt |
| y | n/a | Fuel Drain Plug |
| aa | n/a | Fuel Drain Plug Gasket |

5X65RU Crankcase

176 - Gasket Kit - Complete

177 - Gasket Kit - External

178 - Complete Engine

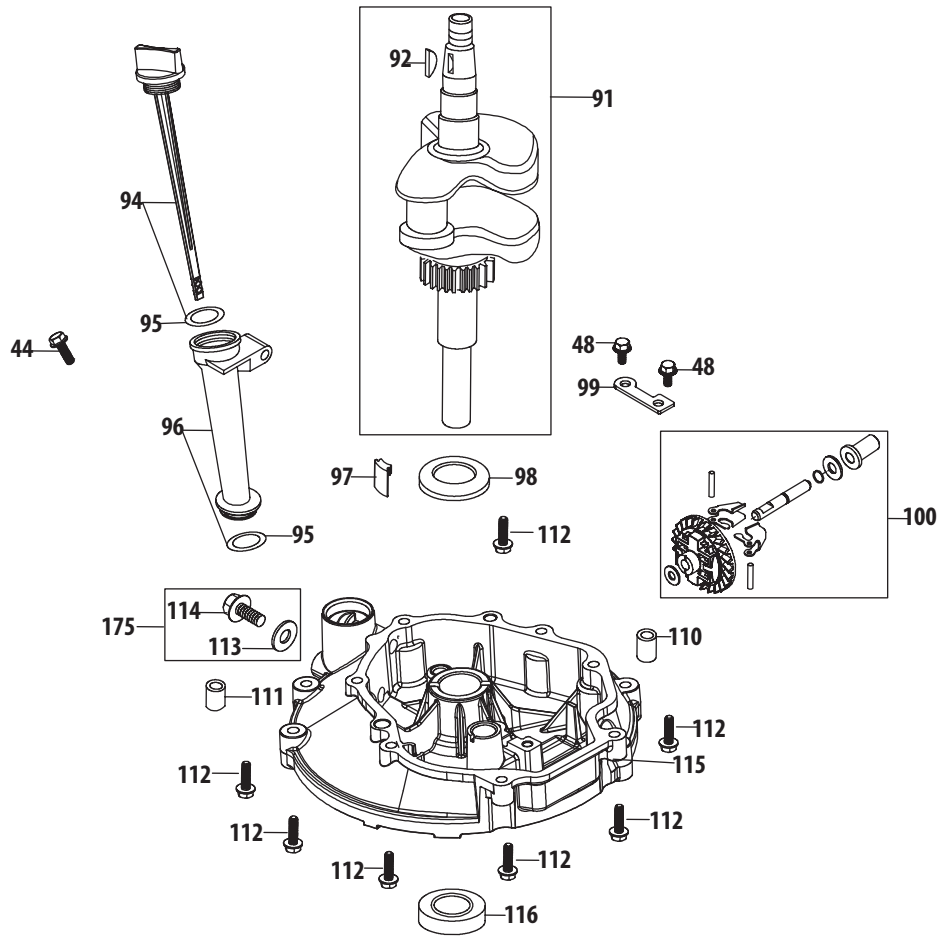


5X65RU Crankcase

| Ref. | Part Number | Description |
|------|-------------|-----------------------------------|
| 28 | 951-14402 | Brake Assembly |
| 36 | 712-04219 | Brake Arm Nut |
| 38 | 712-04209 | Ground Switch Nuts M4 |
| 43 | 750-05384 | Brake Spacer |
| 44 | 710-04980 | Bolt M6X35 Af Base/Brake/Dipstick |
| 45 | 710-04918 | Bolt M6x20 Ignition Coil |
| 46 | 951-11622 | Flexible Clamp, Ignition Coil |
| 47 | 951-14403 | Ignition Coil Assembly |
| 48 | 710-04916 | Bolt M6X14 Multi-Purpose |
| 49 | 951-14404 | Breather Cover Plate |
| 50 | 951-14405 | Breather Gasket |
| 51 | 951-11596 | Upper Crankshaft Seal |
| 52 | 951-11730 | Breather Screen |
| 53 | 732-04718 | Breather Valve Spring |
| 54 | 951-11614 | Breather Valve |
| 64 | 710-04915 | Bolt M6X12 Multi-Purpose |
| 71 | 951-14408 | Choke Linkage |
| 72 | 951-14409 | Throttle Linkage Spring |
| 73 | 951-14410 | Throttle Linkage |
| 74 | 951-14411 | Governor Spring |
| 75 | 951-14412 | Governor Arm Assembly |
| 79 | 951-14413 | Component Bracket |
| 80 | 951-14414 | Air Vane Bracket |
| 81 | 951-11529 | Air Vane |

| Ref. | Part Number | Description |
|------|-------------|---|
| 82 | 714-04074 | Governor Arm Shaft Cotter Pin |
| 83 | 951-11574 | Governor Seal |
| 84 | 951-14416 | Governor Arm Shaft |
| 85 | 951-11520 | Breather Hose Assembly |
| 86 | 726-04101 | Breather Hose Clamp |
| 88 | 951-14415 | Crankcase Cover Gasket |
| 89 | 951-14447 | Short Block (Incl.48-54,82-84,88-92,95,97-100, 110-116,126,132,133,149,152,156, 157,159-161,166-169,172) |
| 90 | 951-11369 | Main Bearing |
| 161 | 951-14433 | Piston Ring Set |
| 166 | 951-11603 | Piston Pin Snap Ring |
| 167 | 951-14434 | Piston |
| 168 | 951-14435 | Piston Pin |
| 169 | 951-14436 | Connecting Rod Assembly |
| 172 | 710-05115 | Connecting Rod Bolt |
| 176 | 951-14443 | Gasket Kit - Complete (Incl.50,51,83,88,95,113,116,126, 128,131-133,149,152,156) |
| 177 | 951-14444 | Gasket Kit -External (Incl.50,95,113,126,128, 131-133,149,152) |
| 178 | 952Z5X65RU | Complete Engine |

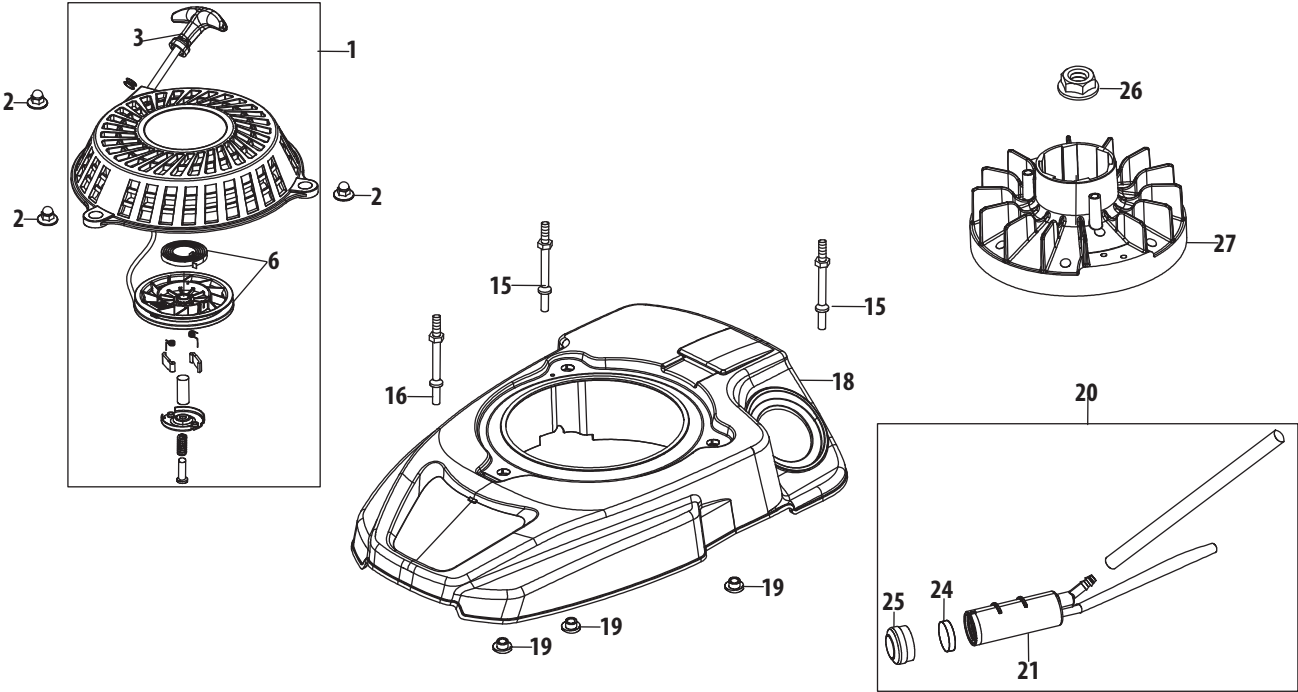
5X65RU Crankshaft & Crankcase Cover



| Ref. | Part Number | Description |
|------|-------------|-----------------------------------|
| 44 | 710-04980 | Bolt M6X35 Af Base/Brake/Dipstick |
| 48 | 710-04916 | Bolt M6X14 Multi-Purpose |
| 91 | 951-14417 | Crankshaft Assembly |
| 92 | 951-10307 | Flywheel Key |
| 94 | 951-14440 | Oil Dipstick Assembly |
| 95 | 951-11546 | Dipstick / Oil Fill Tube O-Ring |
| 96 | 951-14441 | Oil Fill Tube Assembly |
| 97 | 951-11733 | Oil Return Seal |
| 98 | 736-04491 | Crankshaft Thrust Washer |
| 99 | 951-11609 | Governor Gear Mounting Plate |

| Ref. | Part Number | Description |
|------|-------------|----------------------------------|
| 100 | 951-11549 | Governor Gear/Shaft Assembly |
| 110 | 715-04092 | Crankcase Cover Dowel Pin 7×14 |
| 111 | 715-04089 | Crankcase Cover Dowel Pin 9×14 |
| 112 | 710-04931 | Bolt M6X28 X65/P65 Crankcase |
| 113 | 736-04440 | Oil Drain Plug Washer |
| 114 | 710-04906 | Oil Drain Plug |
| 115 | 951-14418 | Crankcase Cover |
| 116 | 951-11545 | Lower Crankshaft Seal |
| 175 | 951-10370 | Oil Drain Plug & Washer Assembly |

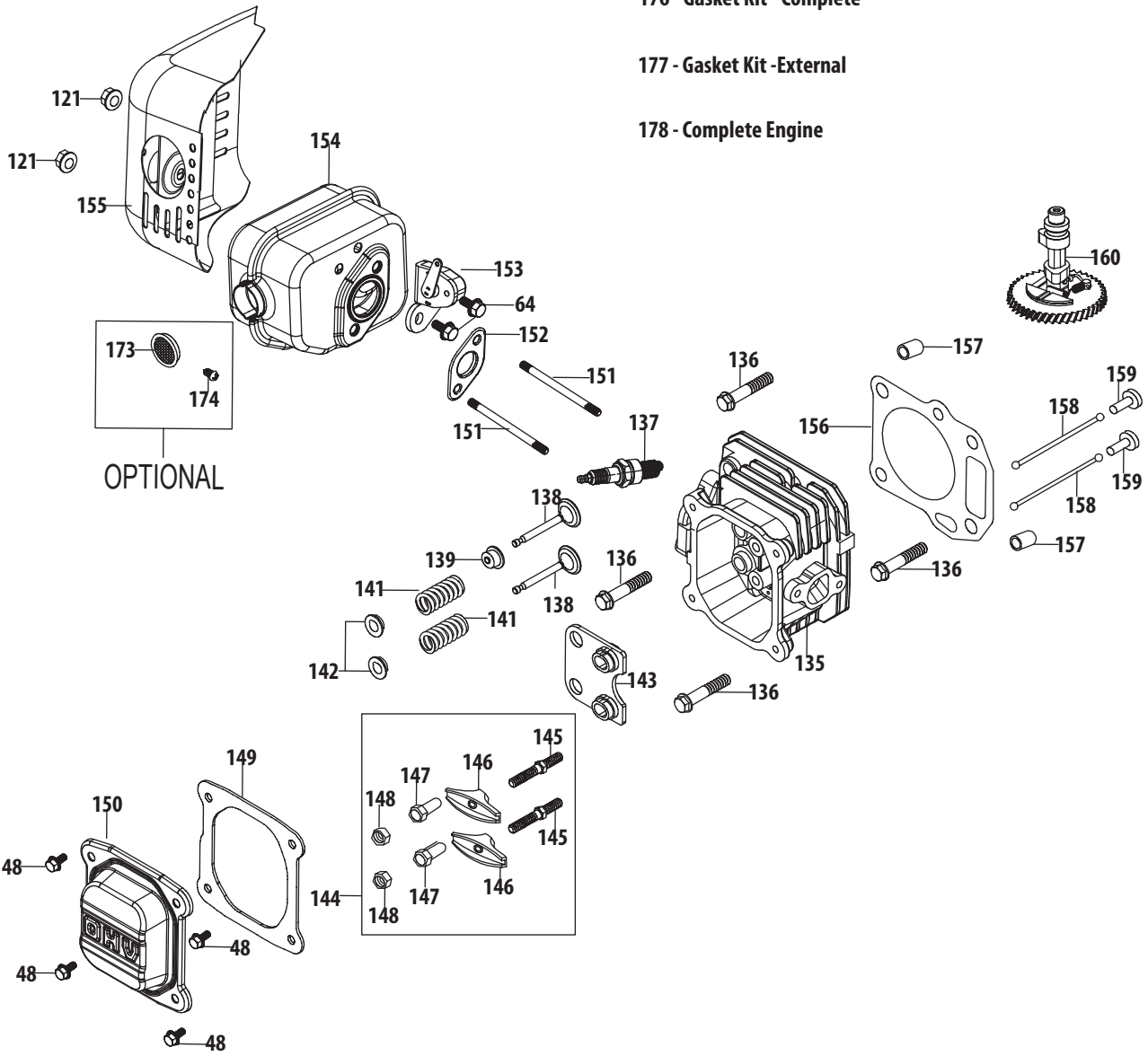
5X65RU Flywheel & Shroud



| Ref. | Part Number | Description |
|------|-------------|----------------------------------|
| 1 | 951-14396 | Starter Recoil Assembly |
| 2 | 712-04290 | Starter Acorn Nut |
| 3 | 731-07925 | Starter Handle |
| 6 | 951-11721 | Recoil Pulley & Spring Assembly |
| 15 | 951-14397 | Starter/Shroud Rear Stud M6x78.5 |
| 16 | 951-14398 | Starter/Shroud Front Stud M6x74 |
| 18 | 951-14399 | Engine Shroud Assembly |

| Ref. | Part Number | Description |
|------|-------------|----------------------------|
| 19 | 750-05320 | Engine Shroud Spacer |
| 20 | 951-14442 | Carbon Canister Assembly |
| 21 | 951-14126 | Carbon Canister |
| 24 | 951-14400 | Carbon Canister Filter |
| 25 | 951-14127 | Carbon Canister Filter Cap |
| 26 | 712-04287 | Flywheel Nut M14 |
| 27 | 951-14401 | Flywheel |

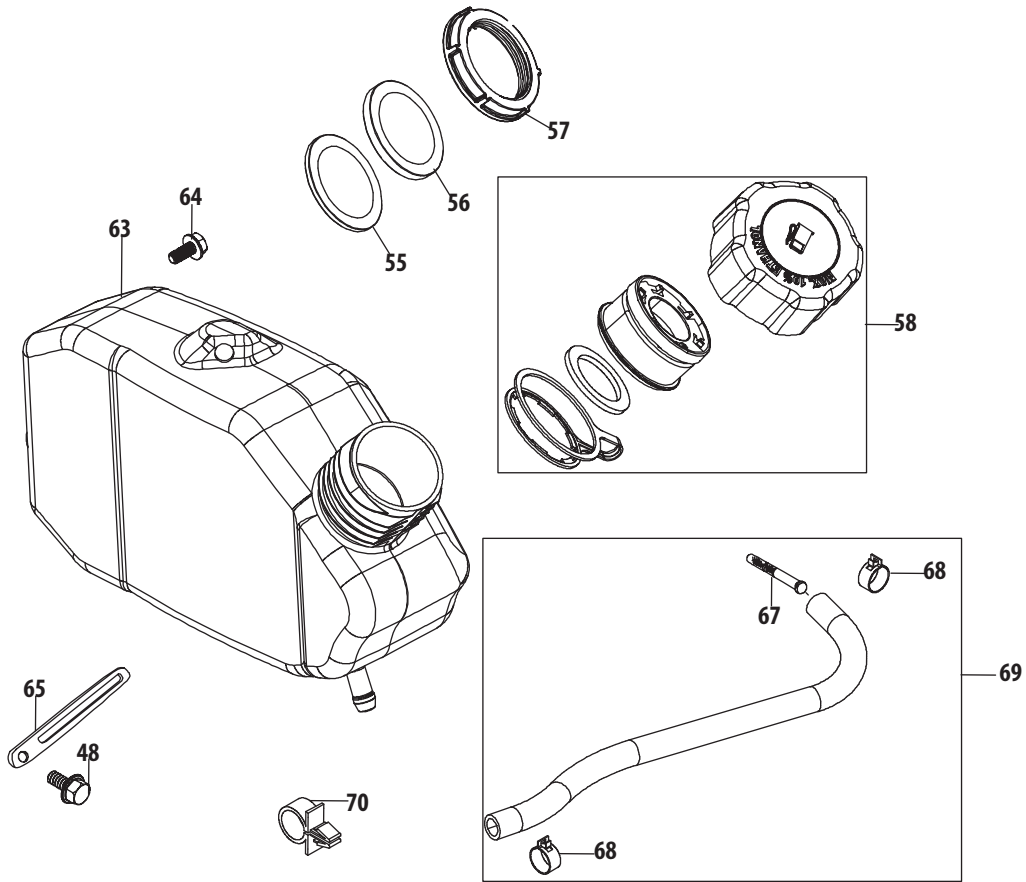
5X65RU Cylinder Head



5X65RU Cylinder Head

| Ref. | Part Number | Description | Ref. | Part Number | Description |
|------|-------------|---|------|-------------|--|
| 48 | 710-04916 | Bolt M6X14 Multi-Purpose | 151 | 710-05094 | Muffler Stud M6X95 |
| 135 | 951-14448 | Cylinder Head Asm (Incl.132,133,135,138-143, 145-149,152,156) | 151 | 951-10342 | Muffler Stud Assembly |
| | 951-14445 | Cylinder Head Service Kit (Incl.136,139,149,156) | 152 | 951-14427 | Muffler Gasket |
| 136 | 710-04982 | Bolt M8X54 Cylinder Head | 153 | 951-14428 | Choke Temp Control Thermostat |
| 137 | 951-14437 | Spark Plug, F5Rtc | 154 | 951-14429 | Muffler Assembly |
| 138 | 951-10313 | Valve Kit | 155 | 951-14430 | Muffler Shield |
| 139 | 951-11818 | Intake Valve Seal | 156 | 951-14431 | Cylinder Head Gasket |
| 140 | 951-10313 | Valve Kit | 157 | 715-04108 | Cylinder Head Dowel Pin 10x16 |
| 141 | 951-12004 | Valve Spring | 158 | 951-10314 | Push Rod Kit |
| 142 | 951-11977 | Valve Spring Retainer | 159 | 951-14432 | Tappet |
| 143 | 951-11687 | Push Rod Guide | 160 | 951-11741 | Camshaft Assembly |
| 144 | 951-11606 | Rocker Arm Assembly | 173 | 951-10351 | Spark Arrestor |
| 145 | 710-04902 | Rocker Arm Stud | 174 | 710-04983 | Spark Arrestor Screw |
| 146 | 951-12001 | Rocker Arm | 176 | 951-14443 | Gasket Kit - Complete (Incl.50,51,83,88,95,113,116,126, 128,131-133,149,152,156) |
| 147 | 751-11123 | Fulcrum Nut | 177 | 951-14444 | Gasket Kit -External (Incl.50,95,113,126,128, 131-133,149,152) |
| 148 | 751-11124 | Jam Nut | 178 | 952Z5X65RU | Complete Engine |
| 149 | 951-11551 | Valve Cover Gasket | | | |
| 150 | 951-14426 | Valve Cover | | | |

5X65RU Fuel Tank



| Ref. | Part Number | Description |
|------|-------------|---------------------------|
| 48 | 710-04916 | Bolt M6X14 Multi-Purpose |
| 55 | 731-08133 | Fuel Tank Lower Grommet |
| 56 | 951-14406 | Fuel Tank Upper Grommet |
| 57 | 731-08104 | Fuel Tank Nut |
| 58 | 951-14407 | Fuel Cap Assembly |
| 63 | 931-04629 | Fuel Tank |
| 64 | 710-04915 | Bolt M6X12 Multi-Purpose |
| 65 | 951-11680 | Flexible Clamp, Vent Hose |
| 67 | 951-10358A | Fuel Filter |
| 68 | 951-11700 | Fuel Hose Clamp |
| 69 | 951-14438 | Fuel Line Kit |
| 70 | 723-04071 | Plastic Support Clamp |



To order replacement parts, call a Customer Support Representative at (800) 965-4CUB.
Locate your nearest Cub Cadet dealer at (877) 282-8684
or visit www.cubcadet.com to find the nearest Cub Cadet dealer in your area.

CUB CADET LLC, P.O. BOX 361131 CLEVELAND, OHIO 44136-0019

Free Manuals Download Website

<http://myh66.com>

<http://usermanuals.us>

<http://www.somanuals.com>

<http://www.4manuals.cc>

<http://www.manual-lib.com>

<http://www.404manual.com>

<http://www.luxmanual.com>

<http://aubethermostatmanual.com>

Golf course search by state

<http://golfingnear.com>

Email search by domain

<http://emailbydomain.com>

Auto manuals search

<http://auto.somanuals.com>

TV manuals search

<http://tv.somanuals.com>