



D-Link DFE-550FX
100Mbps
Fiber-optics Adapter
with SC Connector
User's Guide

First Edition (April, 2000)

6DFE550FX.01

Printed in Taiwan



RECYCLABLE

Copyright Statement

No part of this publication may be reproduced in any form or by any means or used to make any derivative such as translation, transformation, or adaptation without permission from D-Link Corporation / D-Link Systems Inc., as stipulated by the United States Copyright Act of 1976.

FCC Certifications

This equipment has been tested and found to comply with the limits for a Class B digital device, pursuant to Part 15 of the FCC Rules. These limits are designed to provide reasonable protection against harmful interference in a residential installation. This equipment generates, uses and can radiate radio frequency energy and, if not installed and used in accordance with the instructions, may cause harmful interference to radio communications. However, there is no guarantee that interference will not occur in a particular installation. If this equipment does cause harmful interference to radio or television reception, which can be determined by turning the equipment off and on, the user is encouraged to try to correct the interference by one or more of the following measures:

- Reorient or relocate the receiving antenna.
- Increase the separation between the equipment and receiver.
- Connect the equipment into an outlet on a circuit different from that to which the receiver is connected.
- Consult the dealer or an experienced radio/TV technician for help.

Shielded interface cables must be used in order to comply with emission limits.

You are cautioned that changes or modifications not expressly approved by the party responsible for compliance could void your authority to operate the equipment.

This device complies with Part 15 of the FCC rules. Operation is subject to the following two conditions: (1) This device may not cause harmful interference, and (2) This device must accept any interference received, including interference that may cause undesired operation.

Limited Warranty

Hardware:

D-Link warrants each of its hardware products to be free from defects in workmanship and materials under normal use and service for a period commencing on the date of purchase from D-Link or its Authorized Reseller and extending for the length of time stipulated by the Authorized Reseller or D-Link Branch Office nearest to the place of purchase.

This Warranty applies on the condition that the product Registration Card is filled out and returned to a D-Link office within ninety (90) days of purchase. A list of D-Link offices is provided at the back of this manual, together with a copy of the Registration Card.

If the product proves defective within the applicable warranty period, D-Link will provide repair or replacement of the product. D-Link shall have the sole discretion whether to repair or replace, and replacement product may be new or reconditioned. Replacement product shall be of equivalent or better specifications, relative to the defective product, but need not be identical. Any product or part repaired by D-Link pursuant to this warranty shall have a warranty period of not less than 90 days, from date of such repair, irrespective of any earlier expiration of original warranty period. When D-Link provides replacement, then the defective product becomes the property of D-Link.

Warranty service may be obtained by contacting a D-Link office within the applicable warranty period, and requesting a Return Material Authorization (RMA) number. If a Registration Card for the product in question has not been returned to D-Link, then a proof of purchase (such as a copy of the dated purchase invoice) must be provided. If Purchaser's circumstances require special handling of warranty correction, then at the time of requesting RMA number, Purchaser may also propose special procedure as may be suitable to the case.

After an RMA number is issued, the defective product must be packaged securely in the original or other suitable shipping package to ensure that it will not be damaged in transit, and the RMA number must be prominently marked on the outside of the package. The package must be mailed or otherwise shipped to D-Link with all costs of mailing/shipping/insurance prepaid. D-Link shall never be responsible for any software, firmware, information, or memory data of Purchaser contained in, stored on, or integrated with any product returned to D-Link pursuant to this warranty.

Any package returned to D-Link without an RMA number will be rejected and shipped back to Purchaser at Purchaser's expense, and D-Link reserves the right in

such a case to levy a reasonable handling charge in addition mailing or shipping costs.

Software:

Warranty service for software products may be obtained by contacting a D-Link office within the applicable warranty period. A list of D-Link offices is provided at the back of this manual, together with a copy of the Registration Card. If a Registration Card for the product in question has not been returned to a D-Link office, then a proof of purchase (such as a copy of the dated purchase invoice) must be provided when requesting warranty service. The term "purchase" in this software warranty refers to the purchase transaction and resulting license to use such software.

D-Link warrants that its software products will perform in substantial conformance with the applicable product documentation provided by D-Link with such software product, for a period of ninety (90) days from the date of purchase from D-Link or its Authorized Reseller. D-Link warrants the magnetic media, on which D-Link provides its software product, against failure during the same warranty period. This warranty applies to purchased software, and to replacement software provided by D-Link pursuant to this warranty, but shall not apply to any update or replacement which may be provided for download via the Internet, or to any update which may otherwise be provided free of charge.

D-Link's sole obligation under this software warranty shall be to replace any defective software product with a product which substantially conforms to D-Link's applicable product documentation. Purchaser assumes responsibility for the selection of appropriate application and system/platform software and associated reference materials. D-Link makes no warranty that its software products will work in combination with any hardware, or any application or system/platform software product provided by any third party, excepting only such products as are expressly represented, in D-Link's applicable product documentation as being compatible. D-Link's obligation under this warranty shall be a reasonable effort to provide compatibility, but D-Link shall have no obligation to provide compatibility when there is fault in the third-party hardware or software. D-Link makes no warranty that operation of its software products will be uninterrupted or absolutely error-free, and no warranty that all defects in the software product, within or without the scope of D-Link's applicable product documentation, will be corrected.

D-Link Offices for Registration and Warranty Service

The product's Registration Card, provided at the back of this manual, must be sent to a D-Link office. To obtain an RMA number for warranty service as to a hardware product, or to obtain warranty service as to a software product, contact the D-Link

office nearest you. An address/telephone/fax/e-mail/Web site list of D-Link offices is provided in the back of this manual.

LIMITATION OF WARRANTIES

IF THE D-LINK PRODUCT DOES NOT OPERATE AS WARRANTED ABOVE, THE CUSTOMER'S SOLE REMEDY SHALL BE, AT D-LINK'S OPTION, REPAIR OR REPLACEMENT. THE FOREGOING WARRANTIES AND REMEDIES ARE EXCLUSIVE AND ARE IN LIEU OF ALL OTHER WARRANTIES, EXPRESSED OR IMPLIED, EITHER IN FACT OR BY OPERATION OF LAW, STATUTORY OR OTHERWISE, INCLUDING WARRANTIES OF MERCHANTABILITY AND FITNESS FOR A PARTICULAR PURPOSE. D-LINK NEITHER ASSUMES NOR AUTHORIZES ANY OTHER PERSON TO ASSUME FOR IT ANY OTHER LIABILITY IN CONNECTION WITH THE SALE, INSTALLATION MAINTENANCE OR USE OF D-LINK'S PRODUCTS

D-LINK SHALL NOT BE LIABLE UNDER THIS WARRANTY IF ITS TESTING AND EXAMINATION DISCLOSE THAT THE ALLEGED DEFECT IN THE PRODUCT DOES NOT EXIST OR WAS CAUSED BY THE CUSTOMER'S OR ANY THIRD PERSON'S MISUSE, NEGLIGENCE, IMPROPER INSTALLATION OR TESTING, UNAUTHORIZED ATTEMPTS TO REPAIR, OR ANY OTHER CAUSE BEYOND THE RANGE OF THE INTENDED USE, OR BY ACCIDENT, FIRE, LIGHTNING OR OTHER HAZARD

LIMITATION OF LIABILITY

IN NO EVENT WILL D-LINK BE LIABLE FOR ANY DAMAGES, INCLUDING LOSS OF DATA, LOSS OF PROFITS, COST OF COVER OR OTHER INCIDENTAL, CONSEQUENTIAL OR INDIRECT DAMAGES ARISING OUT THE INSTALLATION, MAINTENANCE, USE, PERFORMANCE, FAILURE OR INTERRUPTION OF A D- LINK PRODUCT, HOWEVER CAUSED AND ON ANY THEORY OF LIABILITY. THIS LIMITATION WILL APPLY EVEN IF D-LINK HAS BEEN ADVISED OF THE POSSIBILITY OF SUCH DAMAGE.

IF YOU PURCHASED A D-LINK PRODUCT IN THE UNITED STATES, SOME STATES DO NOT ALLOW THE LIMITATION OR EXCLUSION OF LIABILITY FOR INCIDENTAL OR CONSEQUENTIAL DAMAGES, SO THE ABOVE LIMITATION MAY NOT APPLY TO YOU.

Table of Contents

INTRODUCTION	1
ACPI POWER MANAGEMENT	1
FLOW CONTROL	1
IEEE802.1P PRIORITY TAGGING	2
IEEE802.1Q VLANS	2
PRODUCT FEATURES.....	3
INSTALLATION.....	4
UNPACKING.....	4
INSTALLING THE ADAPTER.....	4
CONNECTING THE NETWORK CABLE	5
SOFTWARE INSTALLATION	6
TROUBLESHOOTING	9
SPECIFICATIONS	10

Introduction

Thank you for choosing the D-Link DFE-550FX Fiber-optics 100 Mbps Adapter. This introduction provides a general description of the newer networking technologies found on the DFE-550FX.

ACPI Power Management

The DFE-550FX adapter complies with the Advanced Configuration and Power Interface 1.0 (ACPI) specifications. ACPI is a new open industry specification providing power management support systems through hardware and operating system cooperation. ACPI specifies how a computer's BIOS, operating system, and peripherals coordinate power usage. With ACPI, the operating system reduces motherboard and peripheral device power needs by activating devices only when they are needed.

802.3x Flow Control

The DFE-550FX implements IEEE 802.3x compliant flow control for full duplex, which provides traffic management functions for full duplex operation. Flow control allows for enhanced full duplex operation with switches. If the switch's data buffer is about to overflow when operating at full duplex, a Pause frame will be transmitted to the DFE-550FX. The ensuing idle time keeps the buffer from overflowing and prevents data from being lost. This enhancement can improve network throughput and prevent lost data, helping the network achieve optimal performance.

In order for 802.3x Flow Control to operate, your switch or hub must support this feature. In addition, some adjustments to the switch or hub settings may be needed.

IEEE802.1p Priority Tagging

With the growing number of network applications, local area networks (LANs) must deliver data for a wide variety applications. Email, file transfers, database queries, voice over IP (VoIP), video-conferencing and multimedia must all be delivered to the end-user's. Some of the traffic, such as video-conferencing, is time-critical. A slight delay in packet delivery can result in noticeable degeneration of video and audio quality, while other traffic, such as Email will not be noticeably affected by tiny delays. The large number of programs run over today's networks can impede the ability to deliver time-critical data. Even if available bandwidth is not usually a problem on your network, during peak hours bursts in network traffic can result in the delay of time-critical traffic.

IEEE802.1p defines eight levels of prioritization for Ethernet packets. High priority packets will be sent through a network using 801.2p-compliant switches first. Lower priority packets will be transferred when bandwidth is available. When properly setup, this ensures that time-critical data arrives on time and is not affected by other traffic.

IEEE802.1Q VLANs

The IEEE802.1Q VLAN can help improve network performance and security by segmenting the network into different VLANs. IEEE802.1Q VLANs can limit broadcast traffic to a single VLAN which prevents the effects of broadcast storms and provides additional security for your network.

To set up GVRP VLANs, which supports dynamic registration, the adapter should be connected to a switch with GVRP VLAN capability.

For VLANs to function, the computer in which this NIC is installed must be using Windows 95 or later.

Product Features

Designed for high performance and versatility, the DFE-550FX Adapter provides the following features:

- Plug and Play installation.
- Complies with the IEEE802.3u/100Base-FX Ethernet standards.
- PCI Bus Master direct memory access for high throughput and low CPU utilization.
- ACPI 1.0 power management compliant.
- IEEE 802.3x Flow Control enabled with full duplex operation, allowing enhanced operation when directly connected to a switch.
- IEEE 802.1Q/VLAN Tagging compliant
- VLAN dynamic registration using IEEE802.1Q GVRP standard
- IEEE 802.1p compliant
- D-Link in-house 32-bit intelligent Ethernet controller.
- Built-in FIFO buffers.
- Three LED indicators: Link, Activity, Full-duplex
- Driver support for all leading Network Operating Systems.
- Auto-assignment of IRQ, I/O addresses.
- PCI 2.1 specification compliant
- Transmission distance of 412m at half-duplex mode and 2000m at full-duplex.
- 100Mbps Fast Ethernet data transfer rate.
- Built-in SC connector.

Installation

Installation of the DFE-550FX 100 Mbps Adapter requires installing the hardware first. Once the interface card has been installed into the host computer, the software can be installed.

Unpacking

CAUTION: *Under ordinary circumstances, a DFE-550FX interface card will not be affected by static electricity. However, it is good practice to eliminate static charges by touching a sizable metal object before handling the adapter card.*

Open the shipping carton and carefully remove all items. In addition to this User's Guide, ascertain that you have:

- One DFE-550FX Adapter.
- DFE-550FX Software Diskette.

Installing the Adapter

1. Shut down the computer, unplug its power cord, and remove the cover.
2. If your order does not include the Boot ROM option, go ahead to Step 3. If your order includes the Boot ROM option, then install the Boot ROM Chip by plugging the chip into the Boot ROM Socket on the DFE-550FX card. The notched end of the Boot ROM Chip must be aligned with the notched end of the Boot ROM Socket. Opposite alignment will destroy the Boot ROM Chip!
3. Firmly insert the contact edge of the DFE-550FX card into any

available PCI Bus expansion slot.

4. Install the bracket screw to secure the card to the computer chassis.
5. Replace the computer cover.
6. Reconnect the computer power cord, and switch the computer power on. If the BIOS section of your computer boot program is Plug and Play compliant, then at power-up the BIOS will automatically configure itself for the newly installed DFE-550FX adapter.

NOTE: *Due to a fault in some Plug-n-Play BIOS programs, it happens occasionally that a newly installed adapter is assigned an IRQ Number which is already assigned to another device. In such a case, the conflicting IRQ Numbers (IRQ numbers must be unique) will cause faults in the behavior of both devices. If this happens, it is necessary to run the CMOS Setup utility, and manually assign a non-conflicting Interrupt Number to the DFE-550FX.*

Connecting the Network Cable

Multimode (62.5/125 μ m or 50/125 μ m) fiber cabling with an IEEE recommended SC connector is required for the adapter. Observe the correct relationship between the receive (Rx) and transmit (Tx) ports on the adapter and repeater. If there is a need to monitor the adapter's faceplate LEDs, make the rear of the PC or workstation accessible and leave sufficient clearance for cabling and service. The maximum length of fiber cable between any station and its supporting hub is 2,000 meters at full-duplex and 412 meters at half-duplex.

Software Installation

On account of the great variety of network environments in which the DFE-550FX may be used, the instructions for software installation are given as README files on the DFE-550FX Software Diskette. Review the root directory and locate the subdirectory containing the appropriate software for use with your network operating system. Access the README file for overview information. For full installation details, see the README file and the referenced instruction files in the sub-directory.

Verification/Diagnostic Program

This test program verifies configuration of the DFE-550FX as set by the installation procedure, and assists with isolation of any faults in operation. Verification and testing procedures are optional, and will only be useful in the unusual event that there is a fault, such as an interrupt number conflict among your computer expansion cards. If your installation provides normal operation, you might choose to skip these procedures.

The Verification/Diagnostic Program provides two levels of testing: adapter function testing and network operation testing. Adapter testing includes a variety of diagnostic procedures.

Adapter testing does not require substitution of a loopback cable. All procedures of the Adapter test may be carried out with the network cable connection in place.

For the network operation test, the cable connecting your station with its supporting hub must be in place. Network testing involves the broadcast transmission of test packets from the primary station. The test cannot be fully implemented unless a second station on the LAN is available to the network operation test, in order to return the test packets to the primary station.

To run the Verification/Diagnostic Program, proceed with these steps:

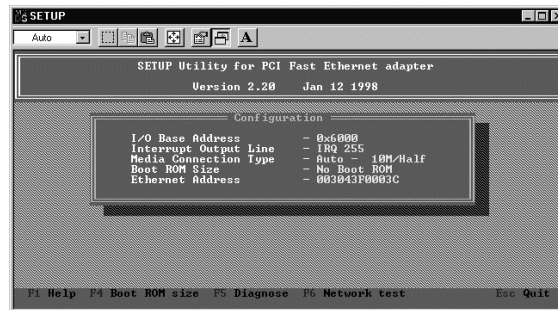
Adapter Function Test

1. Insert the DFE-550FX Software Diskette in an available drive (here shown as drive A). At the DOS prompt (here shown as >), key in:

```
> A:\DIAG.EXE
```

and <RETURN>. The opening screen of the Verification/Diagnostic program will appear.

NOTE: Read the README.TXT, on the diskette, to choose the appropriate diagnostic program for your operating system.



2. Review the reported configuration data before proceeding to Step 3.
3. The Configuration Data screen also features a Diagnostic Menu. Follow the cues at the foot of the screen to select and run the Adapter Basic Diagnostic program. The adapter function test results will appear onscreen. In the Loopback test, test signals are intercepted and reflected at the MAC level without reaching the network cable. If the results are normal, then go ahead to the Network Operation test, starting with Step 4.

Network Operation Test

4. If you have access to a second station on the LAN, then skip ahead to Step 5. If you do not have access to a second station on the LAN, then the network test will be limited to blind transmission of test packets (none of which will be returned to the primary station). Follow the cues at the foot of the screen to select and run the Network Diagnostic program. Observe the *Packets Sent* line to see a steadily and rapidly increasing packet count. This will indicate normal transmission onto the LAN, and will be the end of your Verification/Diagnostic run. Skip the remaining steps shown below.
5. Remove the DFE-550FX Software Diskette from your station's (the primary station's) diskette drive, and insert it into an available drive of a second station on your LAN. At the DOS prompt (here shown as >), key in:

```
> A:\DIAG.EXE
```

and <RETURN>. The opening screen of the Diagnostic program will appear onscreen at the second station. Follow the cues at the foot of the screen to select and run the Network Test program at the second station. The second station then begins broadcasting test packets, and at the same time is also ready to receive and return test signals transmitted from the primary station newly installed DFE-550FX.

6. Return to the primary station and follow the cues at the foot of the screen to select and run the Network Diagnostic program. Observe the *Packets Sent* and *Packets Received* lines to see that they track together (always showing equal count numbers), which verifies normal network operation.

The most likely causes of failure for any of the diagnostic tests are incorrect options settings, option settings that conflict with the settings of other boards or improper installation. In the event of any failure in diagnostic tests, refer to the *Troubleshooting* section of this guide.

Troubleshooting

If you experience any problems with the adapter, first verify that the appropriate driver is loaded, that the proper grade of cable is employed for the network connection, and that the supporting hub is functioning properly.

1. Ascertain that the adapter card is fully and firmly seated in the slot connector.
2. Check the length and rating of connecting cables.
3. Ascertain that the adapter PCI slot is not deactivated at the BIOS level. The CMOS Setup utility in PCI computers ordinarily provides the option to activate or deactivate PCI slots.
4. Replace the adapter in question with a verified adapter and run NIC (software) diagnostic tests.
5. Install the questioned adapter in another PCI computer and run the tests again.

Remove all other PCI adapters from the computer and run the tests again. If the verification/diagnostic run is then normal, then there is probably an interrupt number conflict which will have to be resolved manually by a CMOS Setup utility run after you have reinstalled all of the expansion cards.

The DFE-550FX Adapter features three LED indicators to assist in network diagnostics:

- LINK
Steady green indicates good linkage between the DFE-500FX and the supporting network device.
- ACTIVE
Flashing green indicates activity (transmitting or receiving) within the adapter.
- FULL (duplex) Indicator
This LED is ON for full duplex connections and OFF when connected at half duplex.

Specifications

Network Type:

- IEEE 802.3u standard 100Mbps Ethernet 100Base-FX

Media interface: SC

LAN Chip Set:

- Interface controller: D-Link DL10050A

EMI Compatibility:

- FCC Class B
- VCCI Class B
- CE Class B
- C-Tick
- BSMI

Host interface: PCI 2.1 Bus (Bus Master)

Physceiver: AMD Am79C874

Optical Transceiver: Siemens V23809-C8-C10

Physical Dimensions: 120mm x 73mm

Environment:

- *Storage:* -25° ~ 55°C (-13° ~ 131°F)
- *Operating:* 0° ~ 50°C (32° ~ 122°F)
- *Humidity:* 10% to 90% non-condensing

Power Consumption: 3 Watts max

ESD: 8 KV min

PCB: 4 layers

Device Drivers (Check <http://www.dlink.com> for newest release of drivers.)

Software drivers for:

- Microsoft Windows 95 /98
- Microsoft Windows 2000
- Microsoft NT 4.0
- NDIS 3 driver
- NDIS 4 driver
- NDIS 5 driver
- Novell Netware Server 3.12
- Novell Netware Server 4.1X
- Novell Netware Server 5.X
- Linux : kernel v2.0.x, kernel v2.2.x
- Diagnostic

D-Link Offices

AUSTRALIA	D-LINK AUSTRALASIA Unit 16, 390 Eastern Valley Way, Roseville, NSW 2069, Australia TEL: 61-2-9417-7100 FAX: 61-2-9417-1077 TOLL FREE: 1800-177-100 (Australia), 0800-900900 (New Zealand) URL: www.dlink.com.au E-MAIL: support@dlink.com.au, info@dlink.com.au
CANADA	D-LINK CANADA 2180 Winston Park Drive, Oakville, Ontario L6H 5W1 Canada TEL: 1-905-829-5033 FAX: 1-905-829-5223 BBS: 1-965-279-8732 FREE CALL: 1-800-354-6522 URL: www.dlink.ca FTP: ftp.dlinknet.com E-MAIL: techsup@dlink.ca
CHILE	D-LINK SOUTH AMERICA Isidora Goyenechea #2934 of 702, Las Condes, Santiago, Chile TEL: 56-2-232-3185 FAX: 56-2-2320923 URL: www.dlink.cl E-MAIL: ccasassu@dlink.cl, tsilva@dlink.cl
DENMARK	D-LINK DENMARK Naverland 2, DK-2600 Glostrup, Copenhagen, Denmark TEL:45-43-969040 FAX:45-43-424347 URL: www.dlink.dk E-MAIL: info@dlink.dk
EGYPT	D-LINK MIDDLE EAST 7 Assem Ebn Sabet Street, Heliopolis Cairo, Egypt TEL: 202-2456176 FAX: 202-2456192 URL: www.dlink-me.com E-MAIL: support@dlink-me.com, fateen@dlink-me.com
FRANCE	D-LINK FRANCE Le Florilege #2, Allee de la Fresnerie 78330 Fontenay Le Fleury France TEL: 33-1-30238688 FAX: 33-1-3023-8689 URL: www.dlink-france.fr E-MAIL: info@dlink-france.fr
GERMANY	D-LINK GERMANY Bachstrae 22, D-65830 Kriftel Germany TEL: 49-(0)6192-97110 FAX: 49-(0)6192-9711-11 URL: www.dlink.de BBS: 49-(0)6192-971199 (Analog) 49-(0)6192-971198 (ISDN) INFO LINE: 00800-7250-0000 (toll free) HELP LINE: 00800-7250-4000 (toll free) REPAIR LINE: 00800-7250-8000 E-MAIL: mbischoff@dlink.de, mboerner@dlink.de
INDIA	D-LINK INDIA Plot No.5, Kurla-Bandra Complex Road, Off Cst Road, Santacruz (E), Bombay - 400 098 India TEL: 91-22-652-6696 FAX: 91-22-652-8914 URL: www.dlink-india.com E-MAIL: service@dlink.india.com
ITALY	D-LINK ITALY Via Nino Bonnet No. 6/b, 20154 Milano, Italy TEL: 39-02-2900-0676 FAX: 39-02-2900-1723 E-MAIL: info@dlink.it URL: www.dlink.it

JAPAN **D-LINK JAPAN**
10F, 8-8-15 Nishi-Gotanda, Shinagawa-ku, Tokyo 141 Japan
TEL: 81-3-5434-9678 FAX: 81-3-5434-9868 URL: www.d-link.co.jp
E-MAIL: kida@d-link.co.jp

RUSSIA **D-LINK RUSSIA**
Michurinski Prospekt 49, 117607 Moscow, Russia
TEL: 7-095-737-3389, 7-095-737-3492 FAX: 7-095-737-3390 E-MAIL:
vl@dlink.ru

SINGAPORE **D-LINK INTERNATIONAL**
1 International Business Park, #03-12 The Synergy, Singapore 609917
TEL: 65-774-6233 FAX: 65-774-6322
URL: www.dlink-intl.com E-MAIL: info@dlink.com.sg

S. AFRICA **D-LINK SOUTH AFRICA**
Unit 2, Parkside 86 Oak Avenue
Highveld Technopark Centurion, Gauteng, Republic of South Africa
TEL: 27(0)126652165 FAX: 27(0)126652186 CELL NO: 0826010806 (Bertus
Moller) CELL NO: 0826060013 (Attie Pienaar) E-MAIL: bertus@d-link.co.za,
attie@d-link.co.za

SWEDEN **D-LINK SWEDEN**
P.O. Box 15036, S-167 15 Bromma Sweden
TEL: 46-(0)8564-61900 FAX: 46-(0)8564-61901 E-MAIL: info@dlink.se
URL: www.dlink.se

TAIWAN **D-LINK TAIWAN**
2F, No. 119 Pao-Chung Road, Hsin-Tien, Taipei, Taiwan, R.O.C.
TEL: 886-2-2910-2626 FAX: 886-2-2910-1515 URL: www.dlinktw.com.tw
E-MAIL: dssqa@tsc.dlinktw.com.tw

U.K. **D-LINK EUROPE**
D-Link House, 6 Garland Road, Stanmore, London HA7 1DP U.K.
TEL: 44-20-8235-5555 FAX: 44-20-8235-5500 BBS: 44-20-8235-5511
URL: www.dlink.co.uk E-MAIL: info@dlink.co.uk

U.S.A **D-LINK U.S.A.**
53 Discovery Drive, Irvine, CA 92618 USA
TEL: 1-949-788-0805 FAX: 1-949-753-7033 INFO LINE: 1-800-326-1688
BBS: 1-949-455-1779, 1-949-455-9616
URL: www.dlink.com E-MAIL: tech@dlink.com, support@dlink.com

Registration Card

Print, type or use block letters.

Your name: Mr./Ms _____

Organization: _____ Dept. _____

Your title at organization: _____

Telephone: _____ Fax _____

Organization's full address: _____

Country: _____

Date of purchase (Month/Day/Year): _____

Product Model	Product Serial No.	* Product installed in type of computer (e.g., Compaq 486)	* Product installed in computer serial No.

(* Applies to adapters only)

Product was purchased from:

Reseller's name: _____

Telephone: _____ Fax: _____

Reseller's full address: _____

Answers to the following questions help us to support your product:

1. Where and how will the product primarily be used?

Home Office Travel Company Business Home Business Personal Use

2. How many employees work at installation site?

1 employee 2-9 10-49 50-99 100-499 500-999 1000 or more

3. What network protocol(s) does your organization use ?

XNS/IPX TCP/IP DECnet Other _____

4. What network operating system(s) does your organization use ?

D-Link LANsmart Novell NetWare NetWare Lite SCO Unix/Xenix PC NFS
Com 3+Open Banyan Vines DECnet Pathwork Windows NT Windows NTAS
Windows '95 Other _____

5. What network management program does your organization use ?

D-View HP OpenView/Windows HP OpenView/Unix SunNet Manager Novell NMS
NetView 6000 Other _____

6. What network medium/media does your organization use ?

Fiber-optics Thick coax Ethernet Thin coax Ethernet 10BASE-T UTP/STP
100BASE-TX 100BASE-T4 100VGAnyLAN Other _____

7. What applications are used on your network?

Desktop publishing Spreadsheet Word processing CAD/CAM
Database management Accounting Other _____

8. What category best describes your company?

Aerospace Engineering Education Finance Hospital Legal Insurance/Real Estate
Manufacturing Retail/Chainstore/Wholesale VAR System house/company
Government Transportation/Utilities/Communication Other _____

9. Would you recommend your D-Link product to a friend?

Yes No Don't know yet

PLEASE
PLACE STAMP
HERE

TO:

D-Link®

Free Manuals Download Website

<http://myh66.com>

<http://usermanuals.us>

<http://www.somanuals.com>

<http://www.4manuals.cc>

<http://www.manual-lib.com>

<http://www.404manual.com>

<http://www.luxmanual.com>

<http://aubethermostatmanual.com>

Golf course search by state

<http://golfingnear.com>

Email search by domain

<http://emailbydomain.com>

Auto manuals search

<http://auto.somanuals.com>

TV manuals search

<http://tv.somanuals.com>