

# D-Link Quick Installation Guide

This product can be set up using any current Web browser, i.e., Internet Explorer 6 or Netscape Navigator 6.2.3.



**DWL-G800AP**  
*AirPlus Xtreme G™*  
Wireless Range Extender

## Before You Begin

It is best to use a computer (with an Ethernet adapter) that is connected to a switch for configuring the DWL-G800AP. The default IP address for the DWL-G800AP is **192.168.0.30** with a Subnet Mask of **255.255.255.0**. You will need to assign your computer a static IP address within the same range as the DWL-G800AP's IP address for the purpose of configuring the DWL-G800AP. **See the Manual on the CD-ROM if you need assistance in assigning a static IP address for your network adapter.**

## Check Your Package Contents



**DWL-G800AP Wireless Range Extender**



**CD-ROM (containing Manual and Warranty)**



**Ethernet (CAT5 UTP) Cable**



**5V DC, 2.5A Power Adapter**



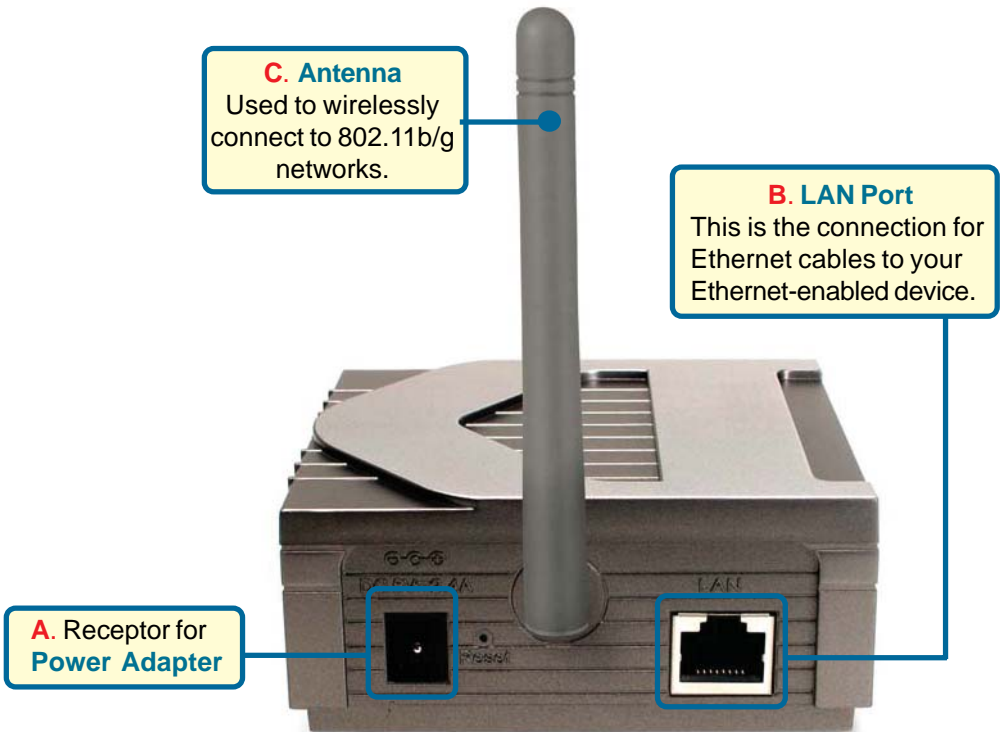
Using a power supply with a different voltage rating will damage and void the warranty of this product.

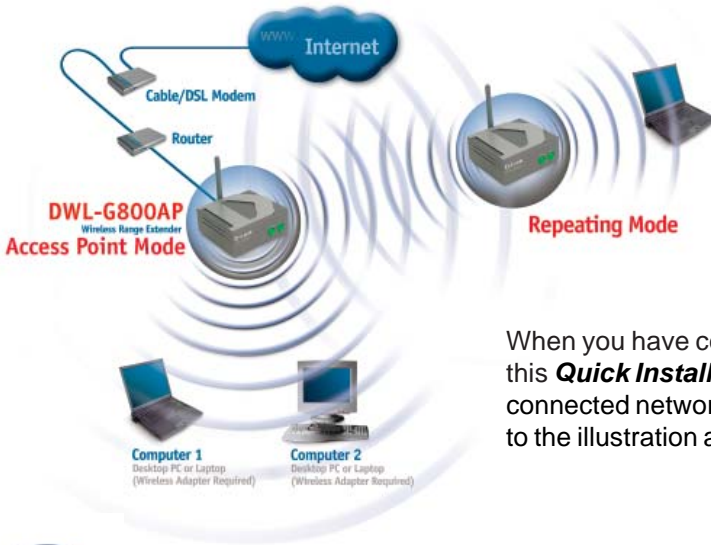
If any of the above items are missing, please contact your reseller.

# 1

## Connecting The DWL-G800AP Wireless Range Extender To Your Network

- A.** First, connect the power adapter to the **receptor** at the back panel of the DWL-G800AP and then plug the other end of the power adapter to a wall outlet or power strip. The **Power LED** will turn **ON** to indicate proper operation.
- B.** Using a Ethernet cable, insert one end of the cable to the **LAN port** on the back panel of the DWL-G800AP and the other end of the cable to a switch/router. **Note:** You also have the option of connecting the DWL-G800AP directly to the computer that will be used for configuration. The Link LED light will illuminate to indicate a proper Ethernet connection. (Note: The LAN Port on the DWL-G800AP is Auto MDI/MDI-X meaning you can use a straight-through or crossover cable to the LAN Port.)
- C.** Computers with 802.11g wireless adapters such as the DWL-G650 *AirPlus Xtreme G™* Wireless Cardbus Adapter and the DWL-G520 *AirPlus Xtreme G™* Wireless PCI Adapter can connect to the DWL-G800AP. By default, the DWL-G800AP is set in repeater mode and will extend the wireless signal from a wireless gateway or access point.





When you have completed the steps in this **Quick Installation Guide**, your connected network should look similar to the illustration above.

## 2 Using The Setup Wizard

Open your **Web browser** and type **"http://192.168.0.30"** into the URL address box. Then press the **Enter** or **Return** key.



The logon pop-up screen will appear.

Type **"admin"** for the username and leave the password field blank.

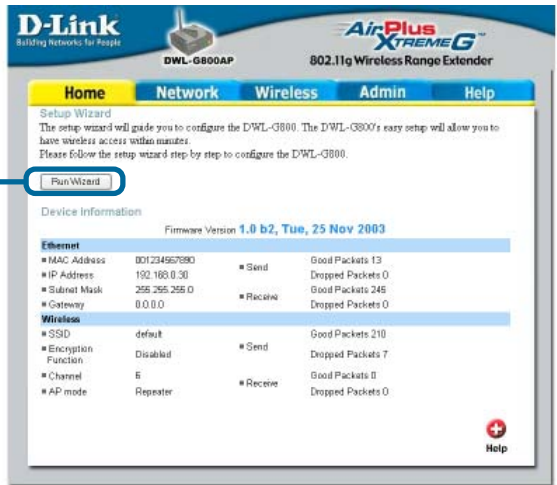


Click **OK**

## 2 Using The Setup Wizard (continued)

Once you have logged in, the **Home** screen will appear.

Click **Run Wizard**



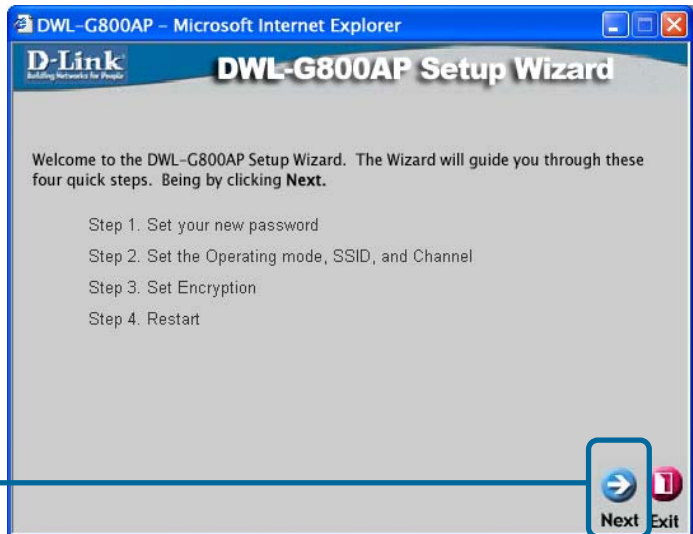
The screenshot shows the D-Link DWL-G800AP Home screen. At the top, there is a navigation bar with tabs for Home, Network, Wireless, Admin, and Help. Below the navigation bar, the "Setup Wizard" section is visible, with a "Run Wizard" button highlighted by a blue box. The page also displays "Device Information" and "Firmware Version 1.0 b2, Tue, 25 Nov 2003".

Ethernet			
MAC Address	001234567890	Send	Good Packets 13
IP Address	192.168.0.30		Dropped Packets 0
Subnet Mask	255.255.255.0	Receive	Good Packets 246
Gateway	0.0.0.0		Dropped Packets 0

Wireless			
SSID	default	Send	Good Packets 210
Encryption Function	Disabled		Dropped Packets 7
Channel	6		Good Packets 0
AP mode	Repeater	Receive	Dropped Packets 0

You will see the following screens.

Click **Next**



The screenshot shows the D-Link DWL-G800AP Setup Wizard screen. The title bar reads "DWL-G800AP - Microsoft Internet Explorer". The main heading is "DWL-G800AP Setup Wizard". Below the heading, it says "Welcome to the DWL-G800AP Setup Wizard. The Wizard will guide you through these four quick steps. Being by clicking **Next**." The steps are listed as follows:

- Step 1. Set your new password
- Step 2. Set the Operating mode, SSID, and Channel
- Step 3. Set Encryption
- Step 4. Restart

At the bottom right, there is a "Next" button with a right arrow and an "Exit" button with a red 'X' icon. The "Next" button is highlighted by a blue box.

**Step 1 - Set up your new password.** You have the option to establish a password.

Click **Next**

D-Link Building Networks for People

## DWL-G800AP Setup Wizard

### Set Password

You may change the **admin** account password by entering in a new password. Click **Next** to continue.

New Password:

Confirm Password:

Back Next Exit

**Step 2 - Wireless Setup**  
By default the DWL-G800AP is set to Repeater mode.

To repeat the wireless signal, click on **Site Survey** to bring up a list of available access points to select from.

Click **Next**

D-Link Building Networks for People

## DWL-G800AP Setup Wizard

### Set Wireless LAN Connection

Choose the Operating mode and enter in the SSID name and Channel number to be used for the Wireless Access Point. Click **Next** to continue.

Operating Mode:  AP Mode  Repeater

SSID:

Channel:

Back Next Exit

**Step 3 - Encryption**  
The DWL-G800AP is capable of three levels of wireless encryption: 64-bit, 128-bit, and 256-bit. **By default the encryption is disabled.** You can change the encryption settings for more secure wireless communication.

Click **Next**

D-Link Building Networks for People

## DWL-G800AP Setup Wizard

### Setup Encryption

If you wish to use encryption, enable it here and enter the encryption Key values. Click **Next** to continue.

Wep:  Enabled  Disabled

Encryption:

WEP Mode:

Key1:

Key2:

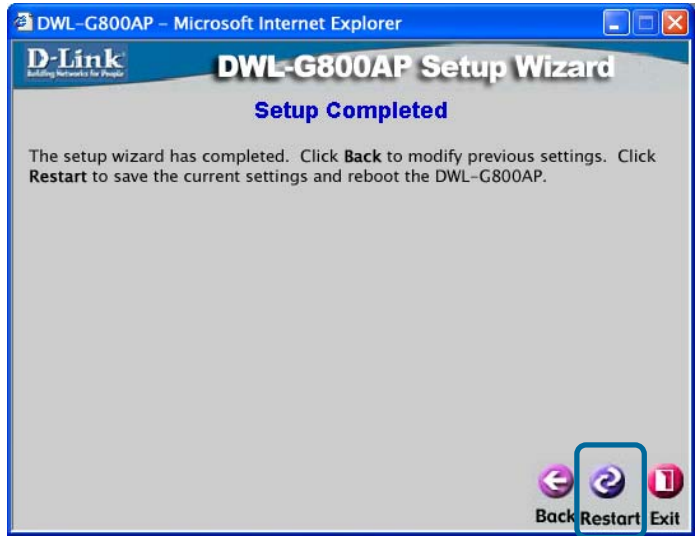
Key3:

Key4:

Back Next Exit

# 3

## Your Setup is Complete!




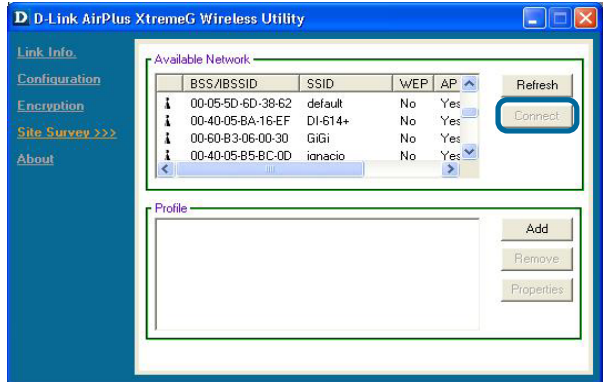
Click **Restart**

# 4

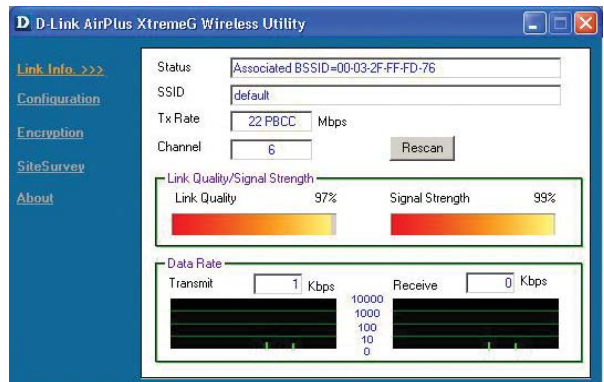
## Connecting to the DWL-G800AP

Using the *AirPlus Xtreme G™* Wireless Utility included with the *AirPlus Xtreme G™* Adapters, you can browse and connect to the DWL-G800AP.

 The MAC address of the DWL-G800AP is listed on the product sticker on the bottom of the unit.



The Link Info page of the *AirPlus Xtreme G™* utility will show the connection status between the DWL-G800AP and *AirPlus Xtreme G™* wireless adapter.



# Technical Support

You can find software updates and user documentation on the D-Link website.

D-Link provides free technical support for customers within the United States and within Canada for the duration of the warranty period on this product.

U.S. and Canadian customers can contact D-Link technical support through our website, or by phone.

## Tech Support for customers within the United States:

### ***D-Link Technical Support over the Telephone:***

(877) 453-5465

24 hours a day, seven days a week.

### ***D-Link Technical Support over the Internet:***

<http://support.dlink.com>

email:[support@dlink.com](mailto:support@dlink.com)

## Tech Support for customers within Canada:

### ***D-Link Technical Support over the Telephone:***

(800) 361-5265

Monday to Friday 7:30am to 12:00am EST

### ***D-Link Technical Support over the Internet:***

<http://support.dlink.ca>

email:[support@dlink.ca](mailto:support@dlink.ca)





## Free Manuals Download Website

<http://myh66.com>

<http://usermanuals.us>

<http://www.somanuals.com>

<http://www.4manuals.cc>

<http://www.manual-lib.com>

<http://www.404manual.com>

<http://www.luxmanual.com>

<http://aubethermostatmanual.com>

Golf course search by state

<http://golfingnear.com>

Email search by domain

<http://emailbydomain.com>

Auto manuals search

<http://auto.somanuals.com>

TV manuals search

<http://tv.somanuals.com>