

Emerson™ Digital Camera



User Guide

EDC240

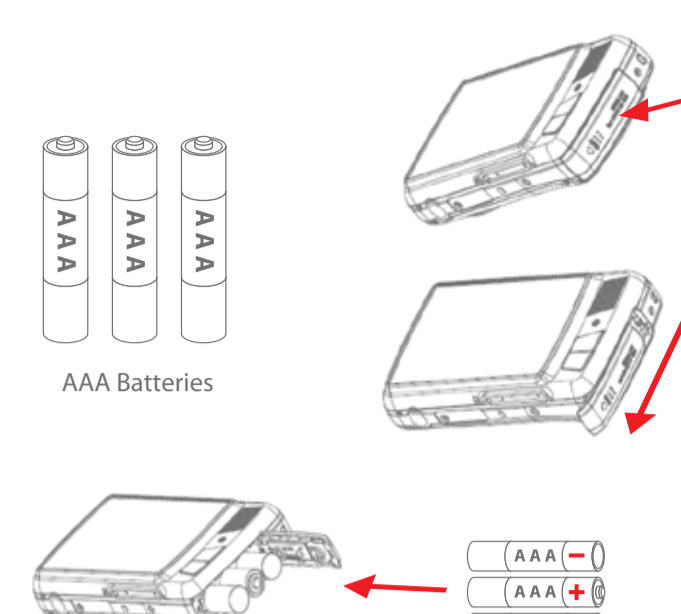
In the box

- Digital Camera
- USB Cable (connects to your computer)
- AAA Batteries
- CD (ArcSoft® Media Impression software)
- User Guide

Requires 3 AAA batteries (not included)

Battery Installation

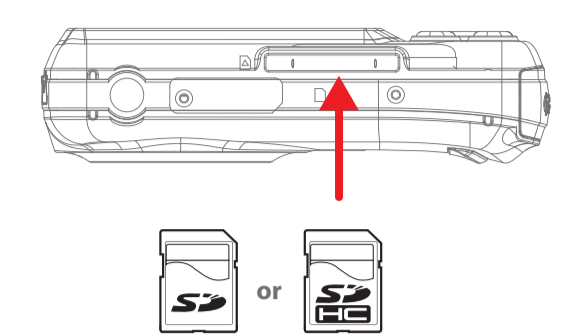
- Open the battery cover by pressing and sliding the battery lock.
- Insert 3 alkaline "AAA" size batteries (not included) into the compartment.
- Close the battery cover.



SD card installation

This camera has no internal memory and requires an SD card (not included) to take and save pictures or record videos. The camera can support SD cards up to **16GB**. To install the SD card into the camera, follow the steps below:

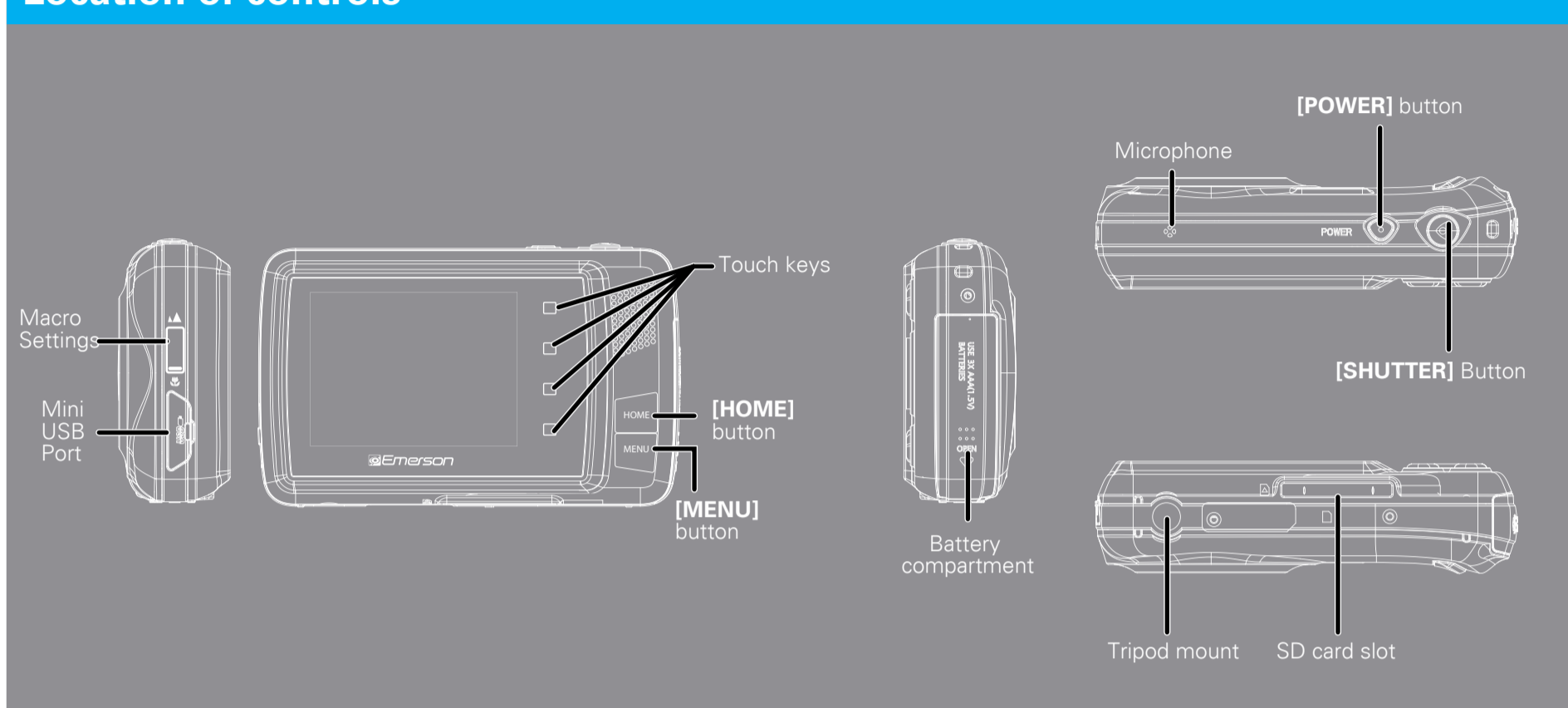
- Turn off the camera.
- Insert the SD card into the card slot (as shown below) until it clicks and locks into place. Make sure the metal contacts are facing the front of the camera.
- To remove the card, gently push it in until it pops out.



i Make sure the Lock switch on the SD card is in the UNLOCKED position.
 • A card can only be inserted one way; do not use force when inserting the card.
 • Inserting or removing a card while the camera is on may damage the card, files stored on the card, or the camera.

Other trademarks and trade names are those of their respective owners.
 ArcSoft and Media Impression are trademarks of ArcSoft, Inc.
 YouTube™ is a registered trademark of YouTube, LLC.
 This product is not affiliated with, or endorsed by YouTube™.
 Parisipany, New Jersey USA
 Emerson and the G-Clef logo are registered trademarks of Emerson Radio Corp.
 Manufactured by: All Inc. Brooklyn, NY 11232
 © 2011 All rights reserved.
 www.southerntelecom.com
 cs@southerntelecom.com
 1-877-768-8483 (Toll Free)
Customer Support:

Location of controls

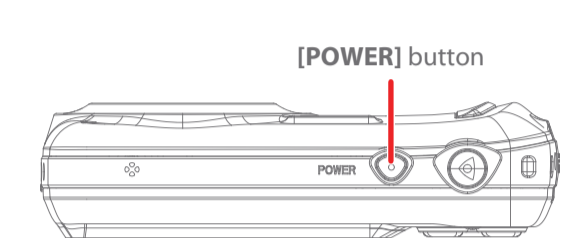


- Touch keys
- [HOME] button
- [MENU] button
- Macro Settings
- Mini USB Port
- Battery compartment
- Tripod mount
- SD card slot
- [POWER] button
- Microphone
- [SHUTTER] Button

Using your camera

Turning the camera on/off

- To turn the camera on, press and HOLD the [POWER] button until the display turns on.
- To turn the camera off, press and HOLD the [POWER] button until the display turns off.



Touch keys

This camera has four touch keys which perform different actions depending on what you are doing with the camera. For example:

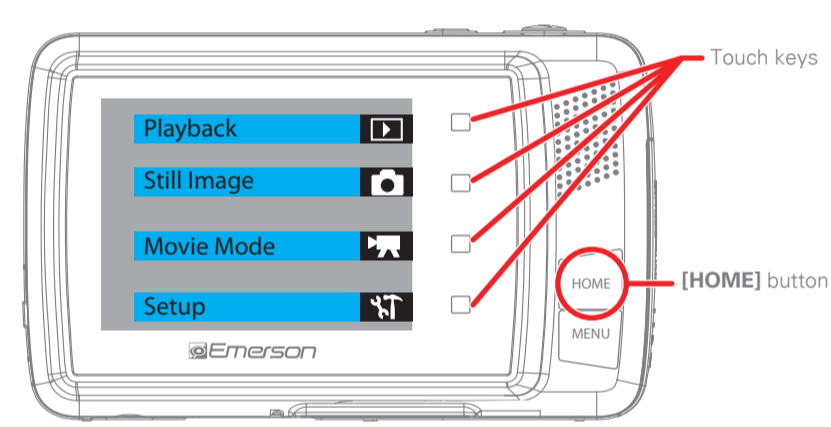
A) In picture mode the four touch keys will be: [Zoom in] [Zoom out] [DIS] [Home]

B) In playback mode the four touch keys will be: [Next] [Grid] [Previous] [Home]

i This camera has an auto-shutoff feature which can be set for specific times (refer to System Settings > Power Save).

Camera modes

When you turn on the camera, the default mode is Photo Mode. To switch modes, press the [HOME] button, then use the touch keys to select from one of four modes.

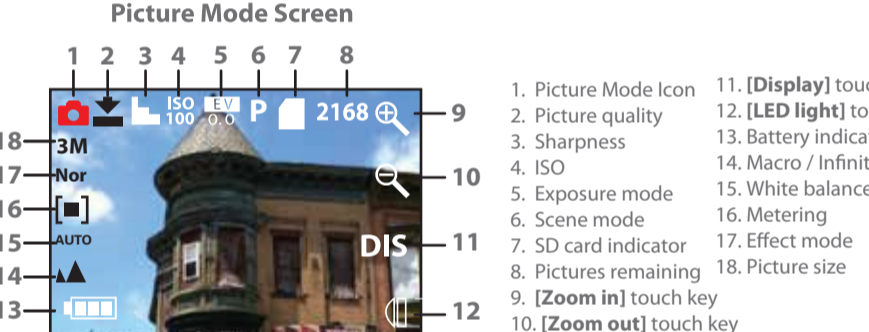


Use the touch keys to select from one of the following options:

- Playback Mode - Playback videos or view pictures
- Picture Mode - Take Pictures
- Video Mode - Record videos
- Setup - make changes to the camera's settings

Picture Mode

- Make sure that an SD card is inserted into the camera.
- Turn on the camera, the **Standby Picture Mode Screen** is displayed and the camera is in **Picture Mode**.
- Press the [SHUTTER] button to take a picture.



- Picture Mode Icon
- Picture quality
- Sharpness
- ISO
- Exposure mode
- Scene mode
- SD card indicator
- Pictures remaining
- [Zoom in] touch key
- [Zoom out] touch key
- [Display] touch key
- [LED light] touch key
- Battery indicator
- Macro / Infinity mode
- White balance
- Metering
- Effect mode
- Picture size

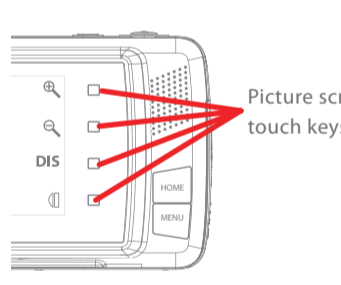
Self timer and continuous shooting

- While in picture mode, press the [MENU] button, then press the [NEXT] touch key, then press the [DRIVER MODE] touch key.
- Use the touch keys to select from 2 second self-timer, 10 second self-timer or Burst.
- When you select 2 or 10 seconds self timer, the timer starts counting down from 2 or 10 seconds, and the camera takes a picture; when you select burst, the camera takes 3 pictures continuously.
- Press the [SHUTTER] button to start self timer or burst snapshot.
- To turn off the self timer or Burst feature repeat step 1 then select "Off".

LED light indicator

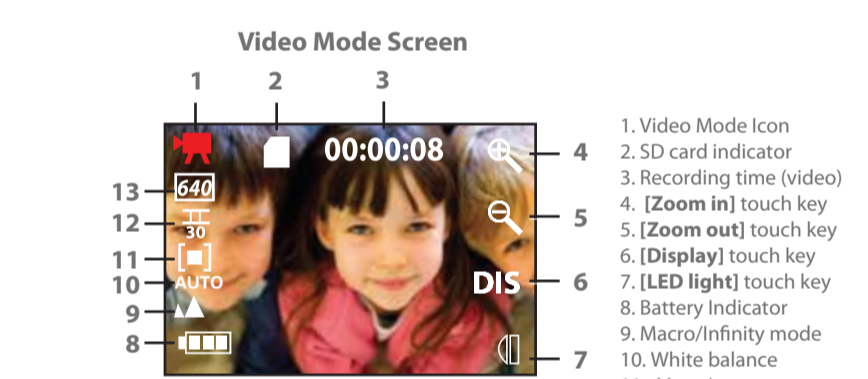
While in Picture Mode press the [LED] touch key repeatedly to select from:

AUTO | AUTO | ON | OFF



Video Mode

- Make sure that an SD card is inserted into the camera.
- Turn on the camera, and press the [HOME] button, then press the [Movie Mode] touch key. The **Video Mode Screen** is displayed.
- Press the [SHUTTER] button, the camera starts recording video.
- To stop recording and save, press the [SHUTTER] button again.



- Video Mode Icon
- SD card indicator
- Recording time (video)
- [Zoom in] touch key
- [Zoom out] touch key
- [Display] touch key
- [LED light] touch key
- Battery Indicator
- Macro/Infinity mode
- White balance
- Metering
- Frame rate
- Video quality

Zoom

Use the [Zoom in] and [Zoom out] touch keys to zoom in and out when recording video, taking photos or viewing still images.


LED light

In Video Mode press the [LED] touch key to turn the LED light On. This is useful for low light situations.

- Press the [LED] touch key to turn the LED on.
- Press the [LED] touch key again to turn the LED off.

Display mode

Use the [DIS] touch key to switch the display modes between: **icons showing / icons off / display off** when recording video or taking photos.

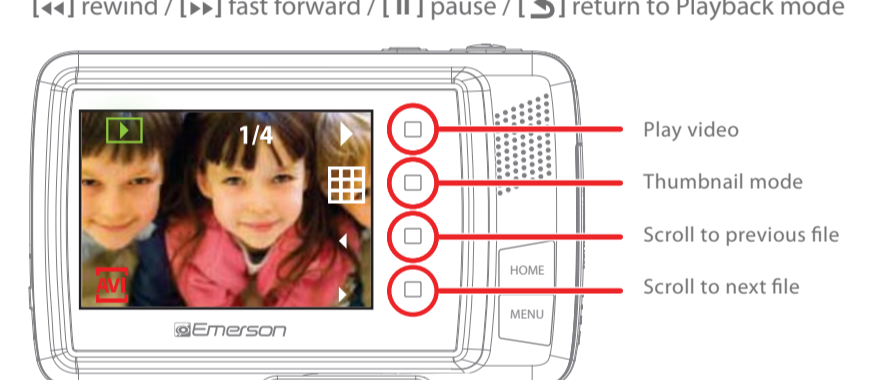


Playback Mode

- Turn on the camera, and press the [HOME] button, then press the [Playback] touch key to enter **Playback mode**.
- Use the [Left] and [Right] touch keys to scroll through the video and picture files.

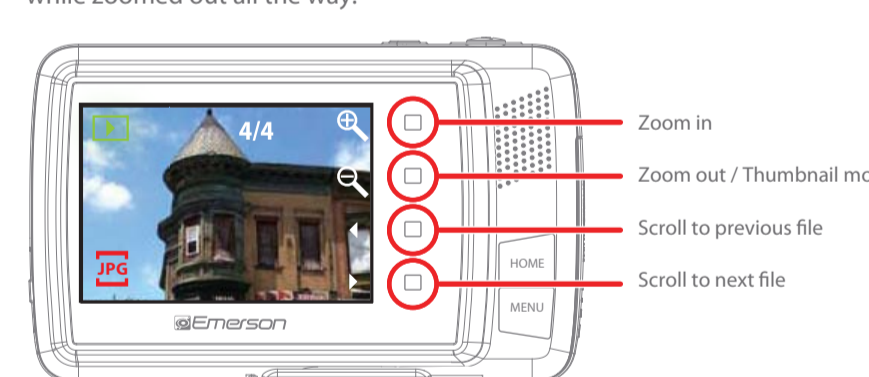
Video Playback AVI

- If you select a video, press the [Play] touch key (play video) to start the video playback. The video starts playing and the touch key icons change.
- Use the video playback touch keys to:
 - [Left] rewind / [Right] fast forward / [Pause] pause / [Home] return to Playback mode



Picture Playback JPG

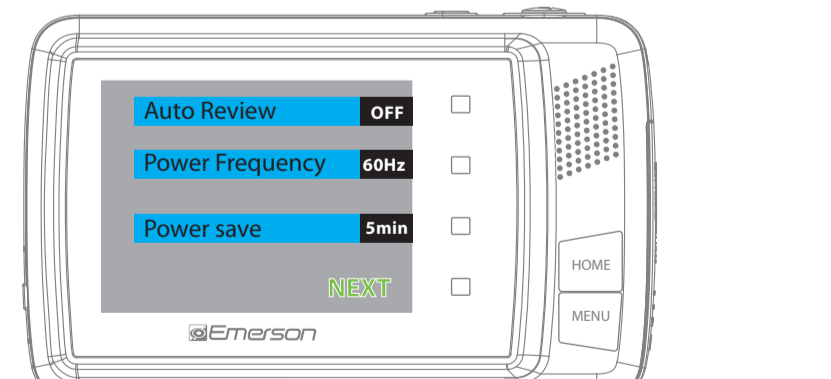
- If you select a picture, use the touch key's as shown below to control picture playback.
- To view pictures in thumbnail mode, press the [Zoom out] touch key (zoom out) while zoomed out all the way.



System Settings

To make changes to the camera's settings, follow the instructions below:

- Press the [HOME] button, then press the [Setup] touch key. The system settings screen will open.
- Use the [NEXT] touch key to scroll to more options.
- Use the touch keys to make changes to the following system settings where you can change the options below.



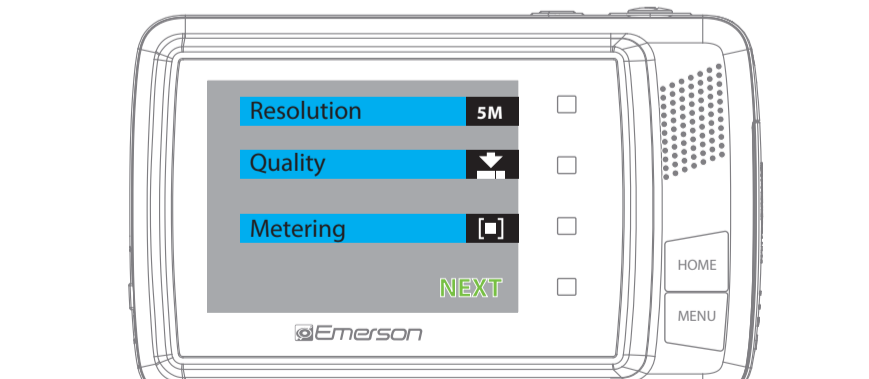
System Settings Options

AUTO REVIEW	set time of review after picture is taken (off, 1 sec, 3 sec).
POWER FREQUENCY	50Hz / 60Hz (The Camera's default setting is 60Hz for the USA and North America)
POWER SAVE	Select 1, 3, or 5 minutes. To conserve battery power, the camera will shut off if no buttons are pressed within the selected time.
DATE & TIME	Set the camera's date and time.
LANGUAGE	Set the camera's language
USB	MSDC or PCCAM (Only select PCCAM when you would like to use the camera as a webcam then be sure to change back to MSDC when using as camera).
FORMAT	Erase all data on the SD card
DEFAULT SETTING	Reset the camera's settings to factory default.

Picture Mode Settings

To make changes to the picture mode settings, follow the instructions below:

- Make sure you are in picture mode (press the [HOME] button, then press the [Still Image] touch icon).
- Press the [MENU] button. The **Picture Mode Settings Screen** will open.
- Use the [NEXT] touch key to scroll to more options.
- Use the touch keys to make changes to the following **Picture Mode Settings** where you can change the options below.



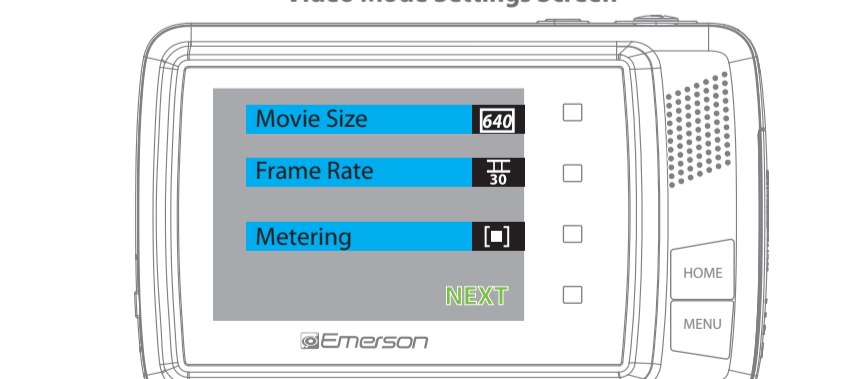
Picture Mode Settings Options

RESOLUTION	1M (1280x1024) / 3M (2048x1536) / 5M (2592x1944) / 8M (3264x2448) / 12M (4000x3000) (Higher picture resolution takes up more space on the card).
QUALITY	Super fine / Fine / Normal
METERING	Center / Multi / Spot
WHITE BALANCE	Auto / Daylight / Cloudy / Fluorescent / Tungsten
EXPOSURE	Adjust the exposure
DRIVER MODE	"Off" (disables the self timer), "2" or "10" second options (self timer), "Burst" (3 frame shot)
EFFECT	Norma / B&W / Sephia / Negative / Red / Green / Blue
SCENE	Auto / Landscape / Portrait / Night Portrait / Beach / Sport / Dinner / High sensitivity
ISO	AUTO / 100 / 200 / 400 / 800
SHARPNESS	Soft / Normal / Sharp

Video Mode Settings

To make changes to the video mode settings, follow the instructions below:

- Make sure you are in video mode (press the [HOME] button, then press the [Movie Mode] touch icon).
- Press the [MENU] button. The **Video Mode Settings Screen** will open.
- Use the [NEXT] touch key to scroll to more options.
- Use the touch keys to make changes to the following **Video Mode Settings** where you can change the options below.



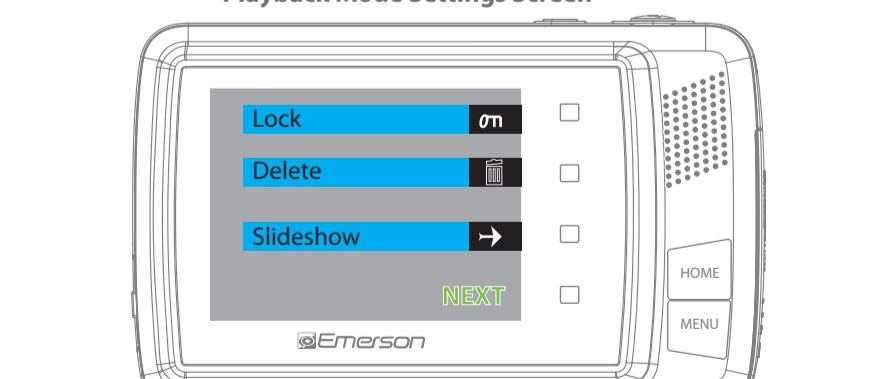
Video Mode Settings Options

MOVIE SIZE	640x480 (Higher quality video / shorter recording time) 320x240 (lower quality video / longer recording time)
FRAME RATE	30 Frames Per Second (Higher quality video / shorter recording time) 15 Frames Per Second (Lower quality video / longer recording time)
METERING	Center / Multi / Spot
WHITE BALANCE	Auto / Daylight / Cloudy / Fluorescent / Tungsten

Playback Mode Settings

To make changes to the playback mode settings, follow the instructions below:

- Make sure you are in playback mode (press the [HOME] button, then press the [Playback] touch icon).
- Press the [MENU] button. The **Playback Mode Settings** will open.
- Use the [NEXT] touch key to scroll to more options.
- Use the touch keys to make changes to the following **Playback Mode Settings** where you can change the options below.



Playback Mode Settings Options

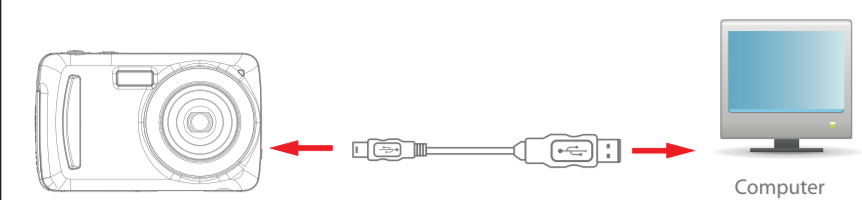
LOCK	Lock one or all of your picture and video files. When locked the files will not be to be deleted.
DELETE	"One" (Delete the currently displayed video or picture) or "All"
SLIDE SHOW	Start a slide show, and adjust the slide show settings.
EFFECT	Select from various special effects.
ROTATE	Rotate the picture.
RESIZE	Resize the picture.

i Slideshow, Effect, Rotate, and Resize will only be options when a picture (jpg) is being viewed.

Connecting the camera

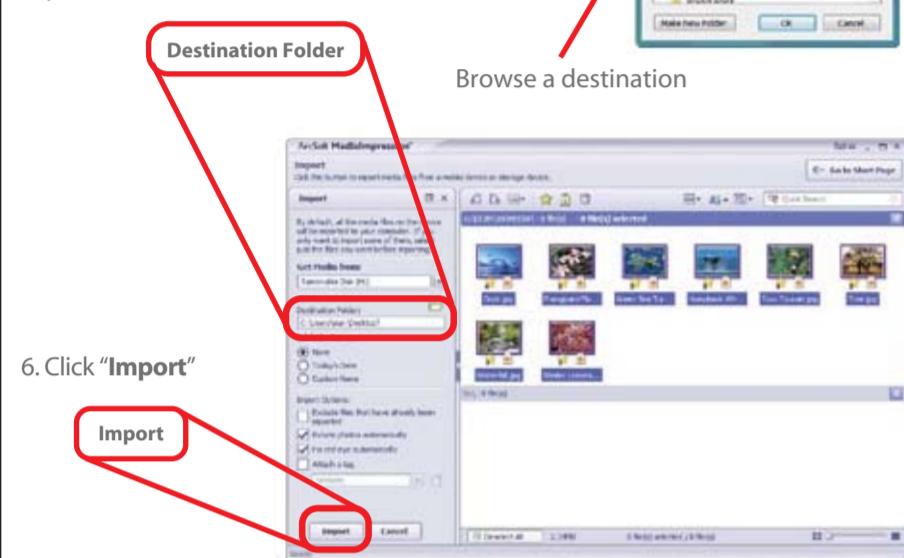
Connect your camera to a computer

To edit or upload and share your videos and pictures, you must first transfer them to your computer. Follow the steps below to connect the camera to your computer, and use the provided ArcSoft® software to manage, view, edit and share your videos and pictures.



1. Make sure the camera is turned off, and that an SD or SDHC card is inserted in the camera before connecting it to your computer.
2. Insert the smaller end of the USB cable into the camera's USB port.
3. Connect the larger end of the USB cable into your computer's USB port.

5. Select a destination on your computer where you would like to transfer the videos or pictures by clicking on the "Destination Folder" drop down window. We recommend transferring the files to either your computer's Desktop, or the "My Videos" or "My Pictures" folders, where you can easily access and find your videos and pictures.



6. Click "Import"

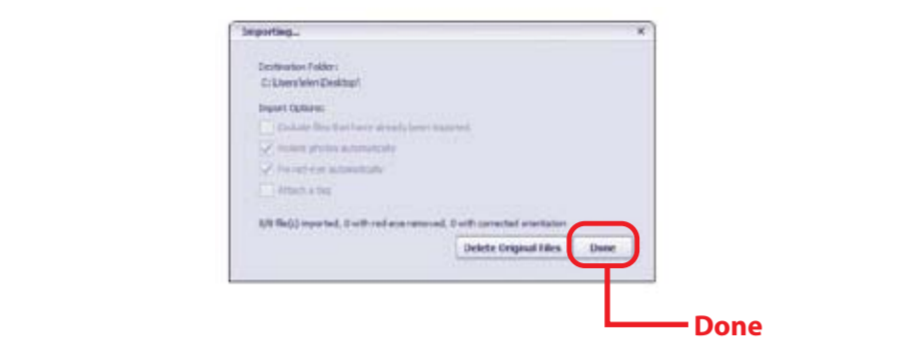
4. Turn ON the camera.
5. Look for your camera by clicking on "My Computer", it should usually appear as "Removable Disk". Select a file, and simply move it into your computer (we recommend copying the files into the "My Videos" or "My Pictures" folder of your computer) in the usual way (drag-and-drop, copy-paste), OR open the ArcSoft® software to easily locate your camera and transfer, view, edit, and upload your video and picture files (see "ArcSoft® MediaImpression").
6. Before disconnecting the camera, click on the "Safely Remove Hardware" icon usually located on the lower right corner of your desktop.

OR

Click on "My Computer", RIGHT click on "Removable Drive" then click on "Eject" from the drop down menu.

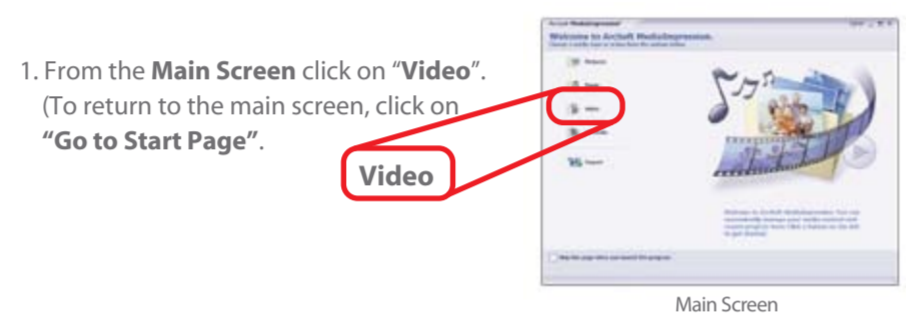
i Please do not disconnect the USB cable during loading, as it may cause damage to the camera and the files on the SD card.

7. If you wish to delete the original files from the camera select "Delete Original Files", otherwise just click "Done".



Viewing videos on your computer

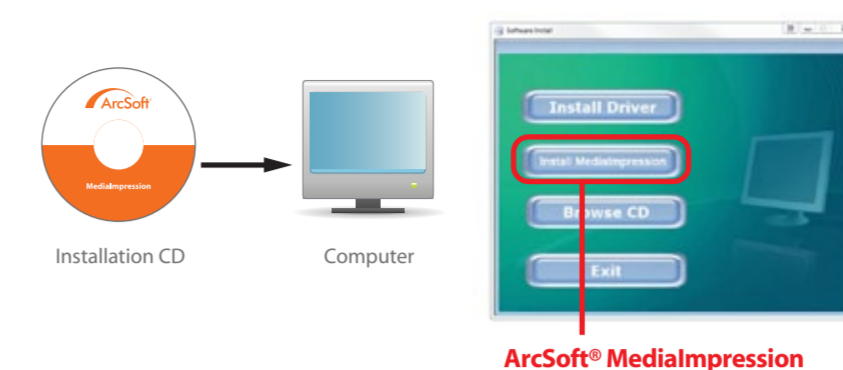
1. From the Main Screen click on "Video". (To return to the main screen, click on "Go to Start Page".)



ArcSoft® MediaImpression

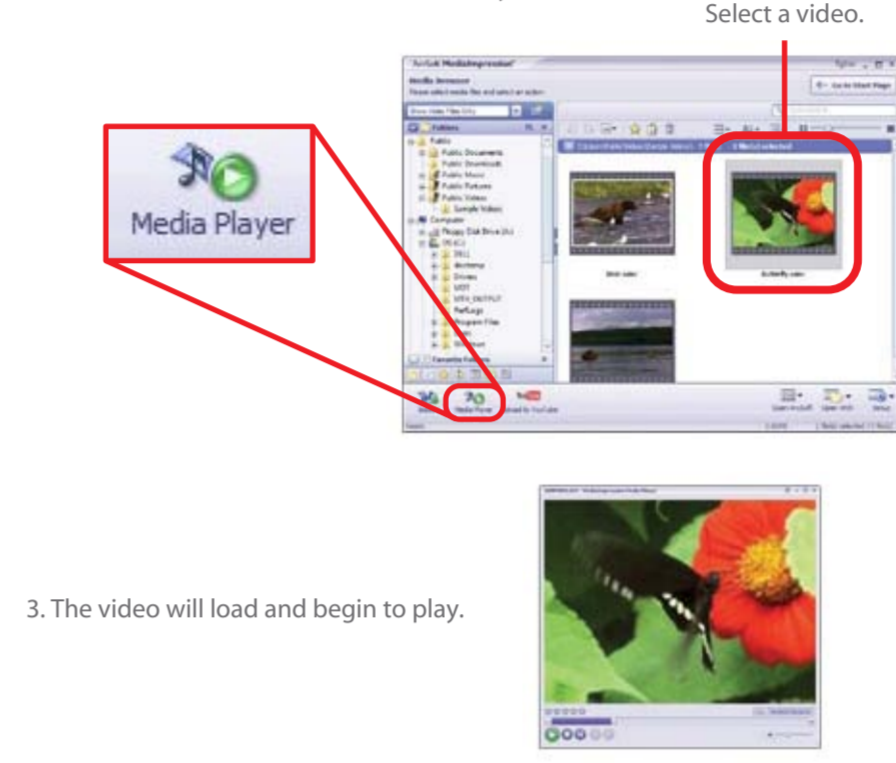
Installing

Install the included ArcSoft® MediaImpression software before connecting the camera to your computer. With this software you will be able to manage, view, edit, transfer, and easily upload / share your videos and pictures. Follow the instructions below to install the MediaImpression software onto your computer.



1. Insert the provided CD into the CD-ROM drive of your computer, and click on "Install MediaImpression".
2. Click "Next" when prompted and "Finish".
3. To open MediaImpression, click on the MediaImpression icon on your Desktop.

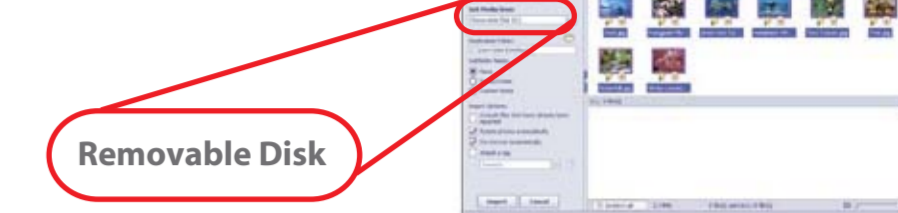
2. Select a video and click on the Media Player icon.



3. The video will load and begin to play.

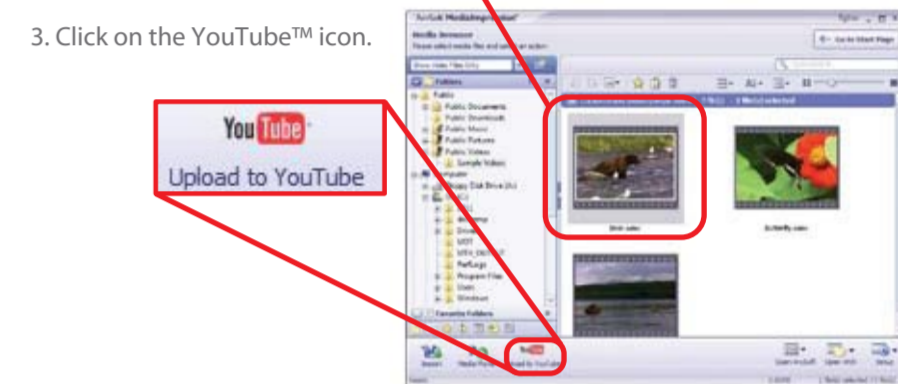
Transferring videos and pictures from the camera to your computer

1. Connect and turn on the camera.
2. Open Media Impression.
3. Click "Import".
4. In the "Get Media from" drop down window, find your camera. (Usually displayed as "Removable Disk")



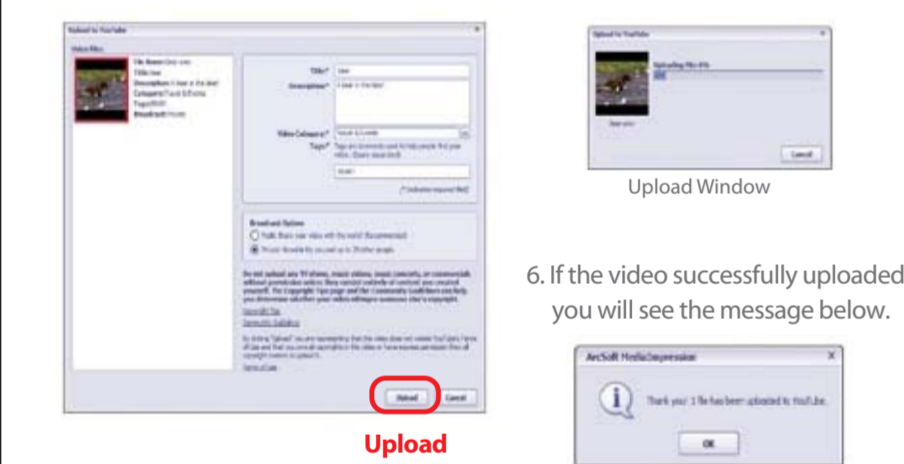
Uploading videos to YouTube™

1. From the Main Screen click on "Video".
2. Select a video.
3. Click on the YouTube™ icon.



4. Enter your YouTube™ username and password (mark the check boxes to save the username and password for future uploads), and click "Login".

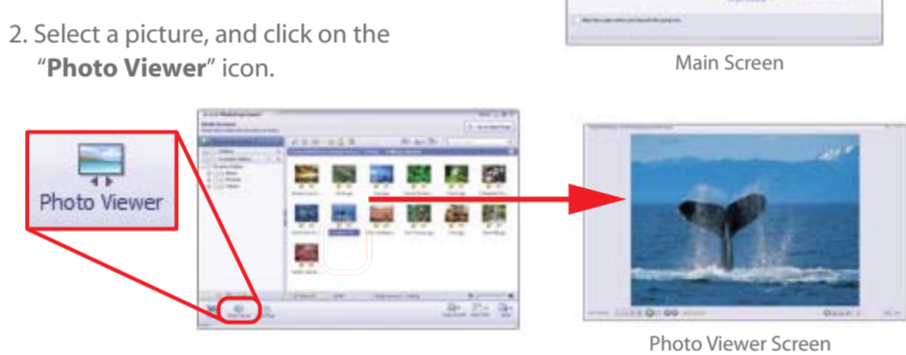
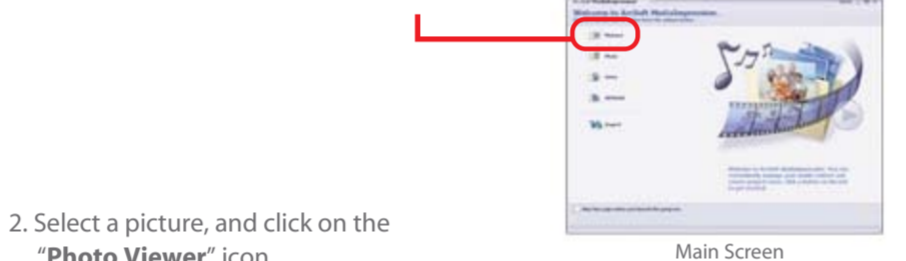
5. Enter the required information and click "Upload".



6. If the video successfully uploaded, you will see the message below.

Viewing pictures on your computer

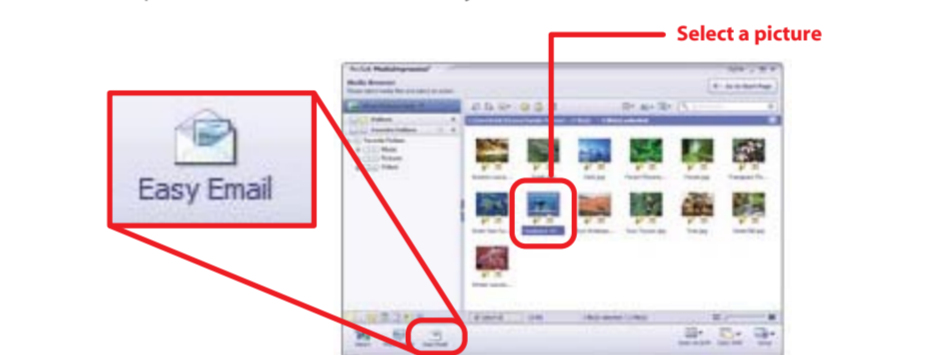
1. From the Main Screen select "Pictures"



3. Within the Photo Viewer Screen you can:
 - Zoom in or out of a picture
 - Start or pause a slide show
 - Move to the previous or next picture
 - Adjust the slide show settings
 - Rotate a picture
 - Eliminate Red Eye
 - Delete

Emailing Pictures

1. Select a picture, and click on the "Easy Email" icon.



2. Adjust the settings according to your preference, and click "Attach to Email"



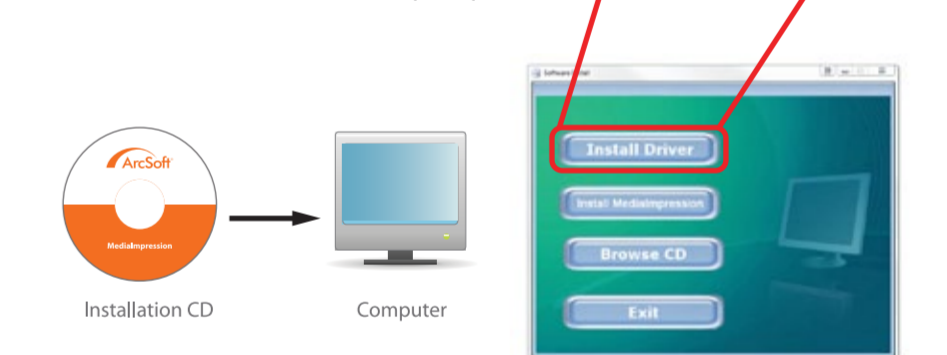
Webcam feature

Installing the Webcam Driver.

Your Digital Video Camera may also be used as a webcam. This feature is quite useful if you would like to utilize the video function on Skype™ and other similar applications. To use the camera as a webcam you must first install the WebCam Driver. Follow the instructions below to install the driver and use the webcam feature.

Note: Do not have the camera connected to the computer when installing the driver.

1. Insert the provided CD into the CD-ROM drive of your computer, and click on "Install Driver".
2. Click "Next".
3. Click "Install" and "Finish" when prompted.

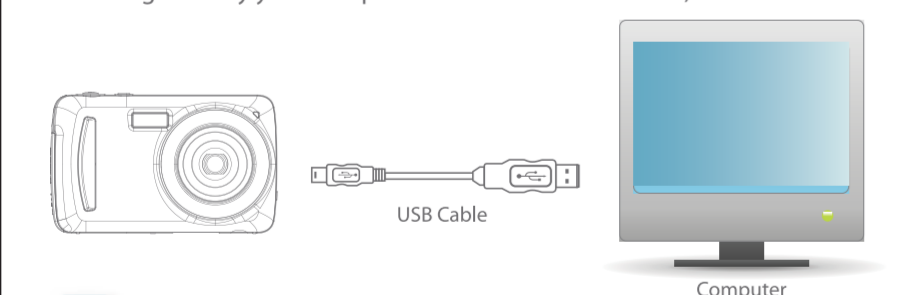


Troubleshooting

Using your camera as a WebCam

Note: You must first install the webcam driver to be able to use the camera as a pc camera (see "Webcam feature").

1. Connect the camera to your computer using the provided USB cable.
2. Turn on the camera.
3. Press the [HOME] button to switch to "PC CAM", the camera will now be recognized by your computer as a webcam.
4. When you are finished using the camera as a WebCam, press the [HOME] button again to switch back to "MSDC" (the camera will now be recognized by your computer as "Removable Drive").



i We recommend using a tripod (not included) when using your camera as a webcam. When you set the camera to PCCAM, you will not be able to access the files on the card when connecting the camera to your computer. Make sure to set it back to its default setting by selecting "USB" and then "MSDC" in the system settings.

Camera will not turn on

- Check that the batteries are properly inserted.
- Try replacing the batteries.

The display does not light up, or the message "No Card!" is displayed

- Check that the SD card is properly inserted into the card slot.

My videos / pictures are fuzzy or poor quality

- Try adjusting the "Movie Size" and "Frame Rate" from the Video Mode Settings Screen or the "Resolution" and "Quality" from the Picture Mode Settings Screen. Remember that choosing higher quality settings will take up more space on the memory card.
- Make sure to keep the camera steady when filming, and be aware of the lighting environment (the more light the better your pictures and videos will turn out).
- Avoid using the zoom too much, as it will affect the quality of your video and pictures.
- Clean the lens of your camera, and make sure it is free of fingerprints (Clean only with a non abrasive dry cloth and make sure the player is turned off before cleaning).

My videos are jumpy or shaky

- Use a mini tripod.
- Adjust the video / picture quality to a higher setting.

Videos do not play on my TV

- Check that you have properly connected the A / V cable to the camera and TV inputs.
- Make sure that the camera is turned on (The display will be off when you connect the A / V cable to the A / VOUT jack of the camera).
- Most televisions have several inputs, check on the TV or your TV's remote for the button that controls the inputs on your TV. Scroll through the different inputs until you see the live feed from the video camera.

My computer does not recognize the camera when I connect it to the USB port

- Check the connection of the USB cable, make sure it is properly connected.
- If you recently used the webcam feature, you must go to the System Settings Screen and select "USB" and choose the "MSDC" option.

Pictures are blurry

- Make sure the macro switch is set to infinity (▲).

FCC information

FCC Part 15: This device complies with Part 15 of the FCC Rules. Operation is subject to the following two conditions:

- (1) this device may not cause harmful interference, and
- (2) this device must accept any interference received, including interference that may cause undesired operation.

Warning: Changes or modifications to this equipment not expressly approved by the party responsible for compliance could void the user's authority to operate the equipment.

NOTE: This equipment has been tested and found to comply with the requirements for a Class B digital device under Part 15 of the Federal Communications Commission (FCC) rules. These requirements are intended to provide reasonable protection against harmful interference in a residential installation. This equipment generates, uses and can radiate radio frequency energy and, if not installed and used in accordance with the instructions, may cause harmful interference to radio communications.

However, there is no guarantee that interference will not occur in a particular installation. If this equipment does cause harmful interference to radio or television reception, which can be determined by turning the equipment off and on, the user is encouraged to try to correct the interference by one or more of the following measures:

- Reorient or relocate the receiving antenna.
- Increase the separation between the equipment and receiver.
- Connect the equipment into an outlet on a circuit different from that to which the receiver is connected.
- Consult the dealer or an experienced radio/TV technician for help.

Warranty service not provided

This warranty does not cover damage resulting from accident, misuse, abuse, improper installation or operation, lack of reasonable care, and unauthorized modification. This warranty is voided in the event any unauthorized person opens, alters or repairs this product. All products being returned to the authorized service center for repair must be suitably packaged.

Limitation of Warranty:

THE WARRANTY STATED ABOVE IS THE ONLY WARRANTY APPLICABLE TO THIS PRODUCT. ALL OTHER WARRANTIES, EXPRESS OR IMPLIED (INCLUDING ALL IMPLIED WARRANTIES OF MERCHANTABILITY OR FITNESS FOR A PARTICULAR PURPOSE) ARE HEREBY DISCLAIMED. NO VERBAL OR WRITTEN INFORMATION GIVEN BY AIT, INC. IT'S AGENTS, OR EMPLOYEES SHALL CREATE A GUARANTY OR IN ANY WAY INCREASE THE SCOPE OF THIS WARRANTY.

REPAIR OR REPLACEMENT AS PROVIDED UNDER THIS WARRANTY IS THE EXCLUSIVE REMEDY OF THE CONSUMER. AIT, INC. SHALL NOT BE LIABLE FOR INCIDENTAL OR CONSEQUENTIAL DAMAGES RESULTING FROM THE USE OF THIS PRODUCT OR ARISING OUT OF ANY BREACH OF ANY EXPRESS OR IMPLIED WARRANTY ON THIS PRODUCT. THIS DISCLAIMER OF WARRANTIES AND LIMITED WARRANTY ARE GOVERNED BY THE LAWS OF THE STATE OF NEW YORK. EXCEPT TO THE EXTENT PROHIBITED BY APPLICABLE LAW, ANY IMPLIED WARRANTY OF MERCHANTABILITY OR FITNESS FOR A PARTICULAR PURPOSE ON THIS PRODUCT IS LIMITED TO THE APPLICABLE WARRANTY PERIOD SET FORTH ABOVE.

Some states do not allow the exclusion nor limitation of incidental or consequential damages, or limitations on how long an implied warranty lasts so the above limitations or exclusions may not apply to you. This warranty gives you specific legal rights, and you also may have other rights that vary from state to state.

Safety Precautions

Always follow these basic safety precautions when using your camera. This will reduce the risk of product damage and personal injury.

- Do not disassemble, repair or modify the camera by yourself. Refer servicing to qualified personnel.
- If the LCD display breaks, do not touch the glass or liquid, and contact customer support.
- The use of a NON-RECOMMENDED accessory may cause fire, electric shock, or injury. For approved accessories, please contact customer support.
- Keep the camera away from direct sunlight and any direct heat source.
- Do not expose the camera to rain or moisture.
- Avoid using the camera in dry environments to avoid static.
- Never apply heavy impact on the player, or place it on a magnet.
- When connecting the camera to a computer or TV, route the cable so that people and pets are not likely to trip over it.
- Clean only with a dry cloth. Make sure the player is turned off before cleaning. Do not use a liquid cleanser.

Important Battery Precautions

- Use only the type of battery specified in this user manual.
- Batteries may present a risk of fire, explosion, or chemical burn if abused. Do not try to charge a battery that is not intended to be recharged.
- Do not dispose of the battery (ies) in a fire. They may explode. Check with local codes for disposal instructions.
- Non-rechargeable batteries, such as alkaline batteries, may leak if left in your product for a long period of time. Remove the batteries from the product if you are not going to use it for a month or longer.
- If your product uses more than one battery, do not mix different types of batteries. Make sure you replace the old, with all new batteries. Mixing different types of batteries or inserting them incorrectly, may cause them to leak.
- In the event that the battery is leaking, do not handle the device with your bare hands. Contact the service center for help since the liquid may remain in the player. If your body or clothes had contact with the battery liquid, wash it off thoroughly with water. Also, if some liquid gets into your eyes, do not rub your eyes but immediately wash them with clean water and consult a doctor.
- Please help to protect the environment by recycling or disposing of batteries according to federal, state, and local regulations.

Limited Warranty

In the unlikely event that this product is defective, or does not perform properly, you may within ninety (90) days from your original date of purchase return it to the authorized service center for repair or exchange.

TO OBTAIN WARRANTY SERVICE:

- Provide proof of the date of purchase within the package (Dated bill of sale).
- Prepay all shipping costs to the authorized service center, and remember to insure your return.
- Include a return shipping address (no P.O. Boxes), a telephone contact number, and the defective unit within the package.
- Describe the defect or reason you are returning the product.

Your product will be repaired or replaced, at our option, for the same or similar model of equal value if examination by the service center determines this product is defective. Products received damaged as a result of shipping will require you to file a claim with the carrier.

The shipping address of the authorized service center is:

Southern Telecom, Inc.
Attention: Customer Service (2nd Floor)
14-C 53rd Street
Brooklyn, NY 11232

Should you have any questions or problems concerning this product, please contact our customer service department at:

Customer Support:
☎ 1-877-768-8483 (Toll Free)
✉ cs@southern telecom.com

Monday - Thursday: 9AM - 5PM (EST)
Friday: 9AM - 3PM (EST)

www.southern telecom.com

Free Manuals Download Website

<http://myh66.com>

<http://usermanuals.us>

<http://www.somanuals.com>

<http://www.4manuals.cc>

<http://www.manual-lib.com>

<http://www.404manual.com>

<http://www.luxmanual.com>

<http://aubethermostatmanual.com>

Golf course search by state

<http://golfingnear.com>

Email search by domain

<http://emailbydomain.com>

Auto manuals search

<http://auto.somanuals.com>

TV manuals search

<http://tv.somanuals.com>