

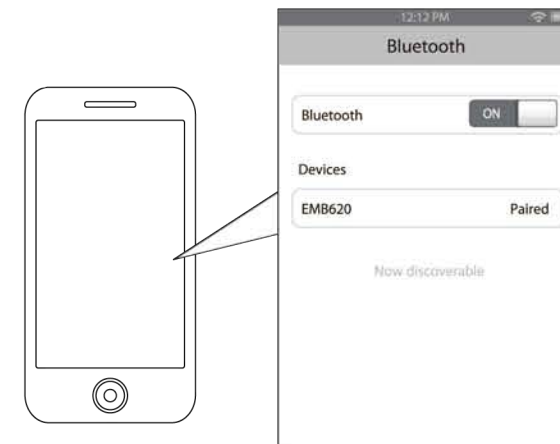
Pairing the Speaker

1. Turn EMB620 on by pressing the [⏻] button.
2. The LED indicator will flash BLUE. The EMB620 is now ready to be paired to your device.
3. Keep the speaker and your Bluetooth-enabled device within 3 feet of each other during the pairing process.
4. Set your mobile phone or other Bluetooth-enabled device to search for Bluetooth devices.

i If there are no paired devices in range when the speaker is turned on, it will go into pairing mode automatically. If a paired device is in range, the speaker will connect to it automatically.

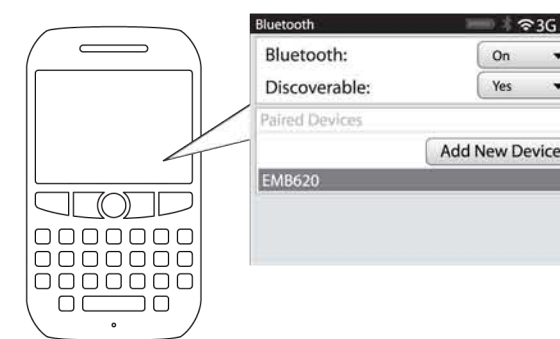
On an iPhone

- Go to SETTINGS > BLUETOOTH (Make sure Bluetooth is turned ON)



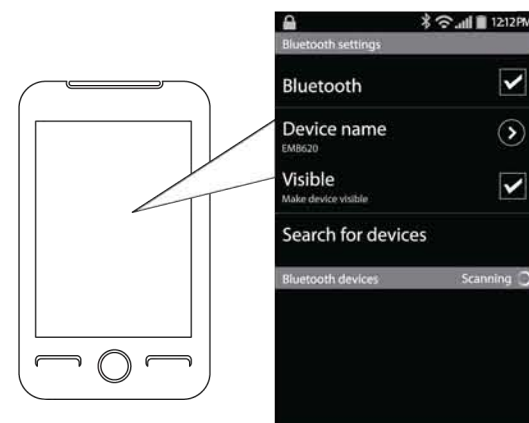
On a Blackberry

- Go to SETTINGS/OPTIONS > BLUETOOTH
- Enable BLUETOOTH



On an Android Phone

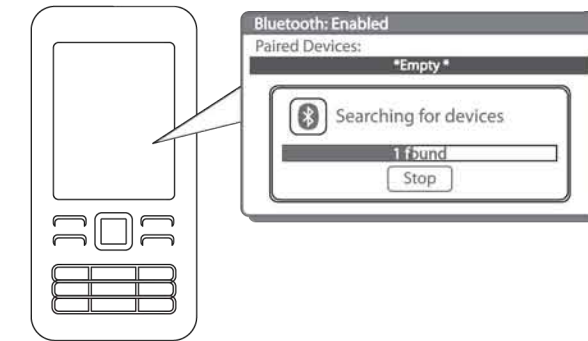
- Go to SETTINGS > BLUETOOTH > MENU Search for devices (Make sure Bluetooth is turned ON)



Pairing the Speaker, (cont'd)

On other Cell Phones/Devices

- Review the instruction manual that came with your phone/device.



i The screenshots above are typical of many Bluetooth-enabled devices in the market today, and are used to assist in the explanation of the pairing process. Your Bluetooth-enabled device's interface and interaction with the speaker may slightly differ from the illustrations above.

5. When your mobile phone (or other Bluetooth-enabled device) finds the speaker, select EMB620 from the list of found devices.
6. If required, enter the password 0000. Select OK or YES to pair the two units.
7. After a successful pairing, a series of tones will be heard confirming the connection and the LED indicator will slowly flash BLUE.

Water Resistance

This speaker is water resistant. It maybe used in a shower and can get wet, but cannot be submerged in water.

1. Make sure the water resistant protector is sealed and properly covering the USB port before coming into contact with any water.
2. You can stick the Bluetooth Speaker to the shower wall with the suction cup by pressing on the front of the speaker.

Charging the Speaker

NOTE: DO NOT CHARGE NEAR WATER. MAKE SURE THE USB PORT IS THOROUGHLY DRY BEFORE CHARGING.

1. Remove the rubber cover over the USB port. Attach the small end of the micro USB cable to the Master speaker's USB port.
2. Connect the large end of the micro USB cable to your computer or other USB charging device.
3. The speaker's LED will stay SOLID RED while charging and turn off when fully charged if not powered on.

NOTE: When you are done charging, make sure the rubber cover is properly covering the USB port.

i Thoroughly dry the speaker before opening the rubber cover for the micro USB. Damage or injury may occur if this is not followed.

i When device is near water always make sure the cover on the micro USB port is properly and thoroughly sealed before using the speaker near the water.

i Make sure you charge the speaker for at least 4 to 5 hours before using it for the first time.

Using the Speaker

Powering ON/OFF

- Long press the [⏻] button to turn ON.
- To turn OFF, long press the [⏻] button.

Phone Calls

- To answer an incoming phone call quick press the [⏻] button.
- To end a call quick press the [⏻] button again.
- Double quick press the [⏻] button to redial the last number called.
- Long press [⏪] and [⏩] to adjust in-call volume.

Playing Music

To enjoy wireless music on your Bluetooth speaker, make sure that the speaker is properly paired to your Bluetooth-enabled device. If you are pairing the device for the first time, please consult the "Pairing the Speaker" section of this user guide.

Playing/Pausing music

- Quick press the [⏸] button to pause music.
- Quick press the [⏸] button to resume playback.

Skipping Songs

- Quick press the [⏮] button to skip to the previous song.
- Quick press the [⏮] button to skip to the next song.

Adjusting Volume

- Long press the [⏮] button to reduce the volume of playback.
- Long press the [⏩] button to increase the volume of playback.

Troubleshooting Tips

i I can pair the speaker with my Bluetooth device, but I cannot hear any music.

1. Make sure your Bluetooth device supports A2DP profile.
2. Turn up the volume on your Bluetooth device.
3. You may have to unpair the speaker, then re-pair to your device.

i My Bluetooth device is not able to pair with the speaker.

1. Make sure the speaker is turned ON before beginning the pairing process.
2. Keep the speaker and Bluetooth-enabled device within 3 feet of each other during the pairing process.
3. Check that YOUR device's Bluetooth feature is turned ON.
4. Try repeating the pairing process (refer to the "Pairing the Speaker" section of this guide).

i I cannot get the speaker into pairing mode.

1. Make sure the speaker is turned ON before beginning the pairing process.
2. Make sure that your device's Bluetooth feature is powered ON and ready to search for Bluetooth devices.
3. Check that the speaker is charged.

Additional Warnings & Precautions

READ CAREFULLY AND KEEP THIS MANUAL

Caution: Any changes or modifications not expressly approved could void the user's authority to operate the equipment.

This device complies with Part 15 of the FCC Rules. Operation is subject to the following two conditions: (1) This device may not cause harmful interference, and (2) this device must accept any interference received, including interference that may cause undesired operation.

Note: This equipment has been tested and found to comply with the limits for a Class B digital device, pursuant to part 15 of the FCC Rules. These limits are designed to provide reasonable protection against harmful interference in a residential installation. This equipment generates, uses and can radiate radio frequency energy and, if not installed and used in accordance with the instructions, may cause harmful interference to radio communications. However, there is no guarantee that interference will not occur in a particular installation.

If this equipment does cause harmful interference to radio or television reception, which can be determined by turning the equipment off and on, the user is encouraged to try to correct the interference by one or more of the following measures:

- Reorient or relocate the receiving antenna.
- Increase the separation between the equipment and receiver.
- Connect the equipment into an outlet on a circuit different from that to which the receiver is connected.
- Consult the dealer or an experienced radio/TV technician for help.

Limited Warranty

90 Days Limited Warranty

In the unlikely event that this product is defective, or does not perform properly, you may within ninety (90) days from your original date of purchase return it to the authorized service center for repair or exchange.

TO OBTAIN WARRANTY SERVICE:

- Call the Customer Support number located below, or go to our website portal to receive an SRO number.
- Provide proof of the date of purchase within the package (dated bill of sale).
- Prepay all shipping costs to the authorized service center, and remember to insure your return.
- Include a return shipping address (no P.O. Boxes), a telephone contact number, and the defective unit within the package.
- Describe the defect or reason you are returning the product.

Your product will be repaired or replaced, at our option, for the same or similar model of equal value if examination by the service center determines this product is defective. Products received damaged as a result of shipping will require you to file a claim with the carrier.

The shipping address of the authorized service center is:

Southern Telecom, Inc.
Attention: Customer Service (2nd Floor)
14-C 53rd Street
Brooklyn, NY 11232

Should you have any questions or problems concerning this product, please contact our customer service department at:

Customer Support:
 Phone: 1-877-768-8481
 Monday-Friday 8AM-10PM(EST)

www.southern telecom.com
 Click on "Product Support"

Warranty service not provided

This warranty does not cover damage resulting from accident, misuse, abuse, improper installation or operation, lack of reasonable care, and unauthorized modification. This warranty is voided in the event any unauthorized person opens, alters or repairs this product. All products being returned to the authorized service center for repair must be suitably packaged.

Limitation of Warranty:

• THE WARRANTY STATED ABOVE IS THE ONLY WARRANTY APPLICABLE TO THIS PRODUCT. ALL OTHER WARRANTIES, EXPRESS OR IMPLIED (INCLUDING ALL IMPLIED WARRANTIES OF MERCHANTABILITY OR FITNESS FOR A PARTICULAR PURPOSE) ARE HEREBY DISCLAIMED. NO VERBAL OR WRITTEN INFORMATION GIVEN BY AIT, INC. ITS AGENTS, OR EMPLOYEES SHALL CREATE A GUARANTY OR IN ANY WAY INCREASE THE SCOPE OF THIS WARRANTY.

• REPAIR OR REPLACEMENT AS PROVIDED UNDER THIS WARRANTY IS THE EXCLUSIVE REMEDY OF THE CONSUMER. AIT, INC. SHALL NOT BE LIABLE FOR INCIDENTAL OR CONSEQUENTIAL DAMAGES RESULTING FROM THE USE OF THIS PRODUCT OR ARISING OUT OF ANY BREACH OF ANY EXPRESS OR IMPLIED WARRANTY ON THIS PRODUCT. THIS DISCLAIMER OF WARRANTIES AND LIMITED WARRANTY ARE GOVERNED BY THE LAWS OF THE STATE OF NEW YORK. EXCEPT TO THE EXTENT PROHIBITED BY APPLICABLE LAW, ANY IMPLIED WARRANTY OF MERCHANTABILITY OR FITNESS FOR A PARTICULAR PURPOSE ON THIS PRODUCT IS LIMITED TO THE APPLICABLE WARRANTY PERIOD SET FORTH ABOVE.

Some states do not allow the exclusion nor limitation of incidental or consequential damages, or limitations on how long an implied warranty lasts so the above limitations on exclusions may not apply to you. This warranty gives you specific legal rights, and you also may have other rights that vary from state to state.



Shower Speaker



User Guide EMB620

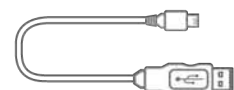
In the Box



Shower Speaker



User Manual

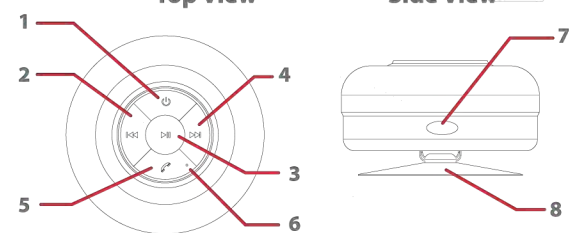


Micro USB Charging Cable

Location of Controls

Top View

Side View



1. [⏻] button - Power ON/OFF/LED indicator
2. [⏮] button - Quick press: Skip to previous song
Long press: Decrease volume
3. [⏸] button - Quick press: Play/pause
4. [⏩] button - Quick press: Skip to next song
Long press: Increase volume
5. [⏻] button - Answer/End incoming phone call
6. Microphone
7. Micro USB charging port
8. Suction cup

Free Manuals Download Website

<http://myh66.com>

<http://usermanuals.us>

<http://www.somanuals.com>

<http://www.4manuals.cc>

<http://www.manual-lib.com>

<http://www.404manual.com>

<http://www.luxmanual.com>

<http://aubethermostatmanual.com>

Golf course search by state

<http://golfingnear.com>

Email search by domain

<http://emailbydomain.com>

Auto manuals search

<http://auto.somanuals.com>

TV manuals search

<http://tv.somanuals.com>