



EMP286-4



User Guide



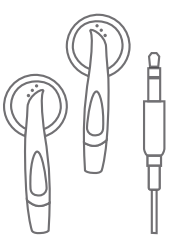
MP3 Player



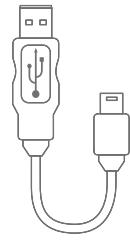
CD (Video Converter)



User Guide



Headphones



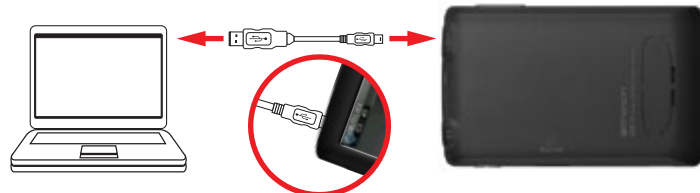
USB Cable



- 1. Mini USB slot
- 2. Reset hole
- 3. Headphone jack
- 4. [+] Volume up button
- 5. [-] Volume down button
- 6. Touch-screen display
- 7. [<] Previous button
- 8. [@] Select button
- 9. [>] Next button
- 10. [<] Power button
- 11. MicroSD card slot
- 12. [<] Previous screen button
- 13. Speaker

Charging

Micro SD card



1. Connect the player to your computer using the included USB cable.
2. Charge the battery between 3-5 hours. Do not charge for more than 8 hours.



This player includes 4GB internal memory, you may use Micro SD cards (up to 32GB) to increase the memory of the player.

To insert the Micro SD card:

1. Turn the player off before inserting or removing the card.
2. Insert the Micro SD card into the card slot with the metal contacts facing towards the back of the player and gently push it in until it clicks. Do not apply excessive force as this may damage the player and/or Micro SD card.
3. To view certain types of files on the Micro SD card, select a function icon from the home screen, then open the browser and select "CardDir".
or
to view all files on the Micro SD card, select "browser" from the home screen then select "CardDir".
4. To remove the Micro SD card, gently push it in until it pops out.
5. When the player is connected to a computer with a card inserted, the card will be listed as a second drive titled "Removable Drive".

- i** Do not use force while inserting or removing a card.
- Do not remove the card during file transfers.
- Turn the player off before inserting or removing a card.

***Insert card with the metal contacts facing the back of the player**



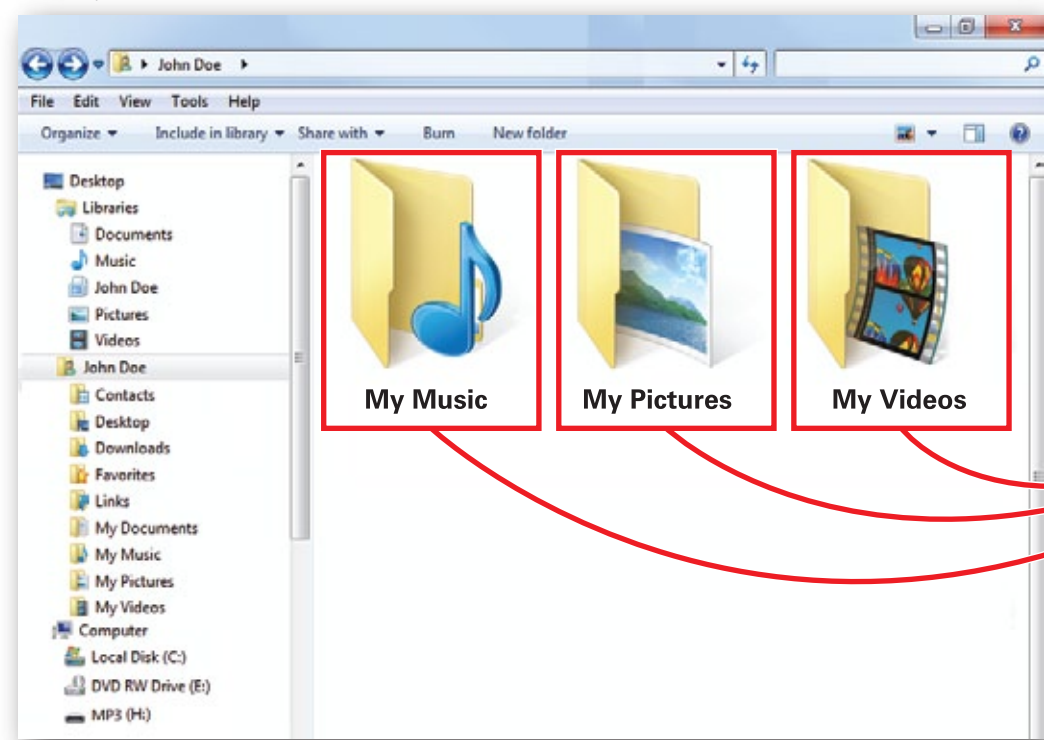
Micro SD



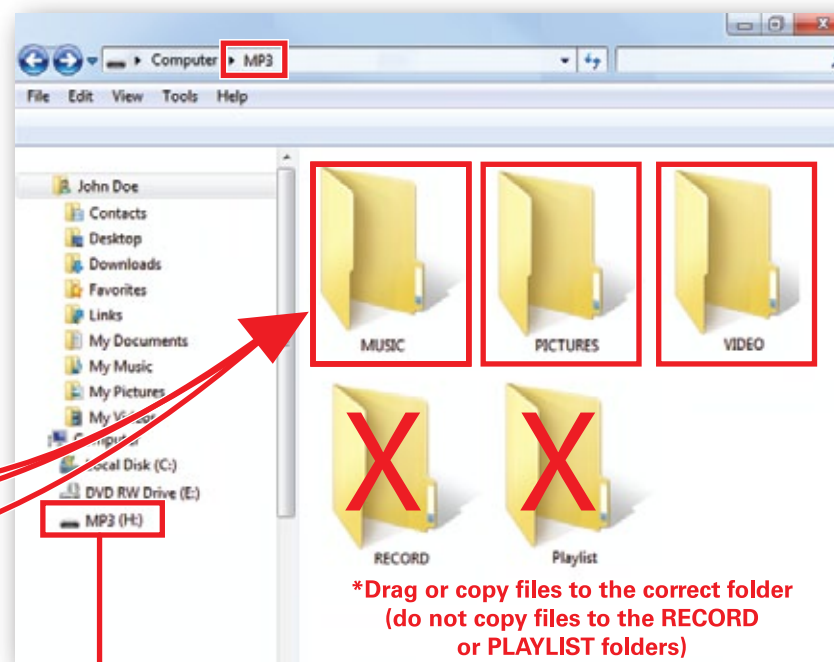
Transferring media files to the player

Converting videos

1. Find music, picture, or video files on your computer.
2. Connect the MP3 Player to your computer, and locate "MP3".
3. Drag the files into the Music, Pictures or Video folder.



My Music My Pictures My Videos



***Drag or copy files to the correct folder (do not copy files to the RECORD or PLAYLIST folders)**

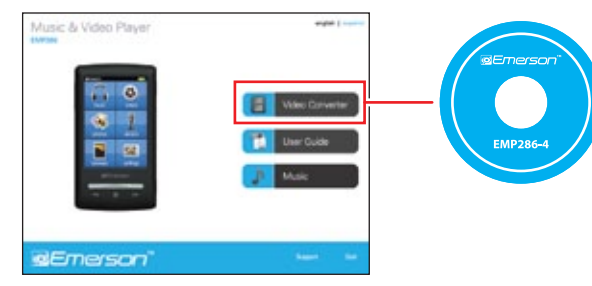
- i** It is also possible to delete files on the player while connected to the computer. Select the file and press the "delete" key of the computer's keyboard.

*Screenshots above may be slightly different than your computer's operating system.

Locate "MP3"

Before transferring video files to the player, you must convert them to the correct format. Use the Video Converter provided on the included CD to convert most video files to the correct format suitable for the player.

1. Insert the CD into your computer's CD drive.
2. The CD should open automatically. On the installer screen that appears, select "Video Converter".
3. Select "User Guide" from the installer screen to view instructions on converting videos.



Installer screen

- i** If the CD installer screen does not open automatically, go to **My Computer > CD Drive > Setup.exe** to manually launch the installer screen.

Basic operation

Using the player

Turning on/off:
Make sure the player is fully charged before turning it on.

- To turn the player on/off, press and hold the [<] button until the display turns on or off.

[POWER] on / off - press and HOLD



Previous screen button

Previous screen:
To return to a previous screen at anytime, press the [<] button on the side of the player.

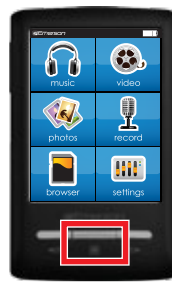
Resetting the player:
If the player malfunctions or freezes, you can use the reset function to restart it.

- To reset the player, take a metal pin (such as the end of a paperclip), and gently push it into the Reset hole on top of the player to restart it.

Reset hole

Home screen
After turning on the player, the home screen appears.

- Touch a function icon on the home screen to select and open it.
- To return to the home screen, press and HOLD the [@] button for two full seconds and release or press the "Home" icon on the touch-screen when available or keep pressing the [<] button until the homescreen appears.



home screen



music screen

- Home screen options:**
- music: play songs
 - video: play videos
 - photos: view pictures
 - record: record voice memos
 - browser: browse all files on the player
 - settings: change system settings

Control buttons
This player can be used by touching the icons on the touch-screen or by pressing the control buttons of the player.



control buttons

- [@] • Make selection
- [<] • Return to home screen (press and HOLD)
- [<] • Play / Pause (media playback mode)
- [<] • Start / Stop recording (record mode)
- [<] • Previous track or file (media mode)
- [<] • Move selection up (menu and list modes)
- [<] • Rewind (press and hold)
- [>] • Next track or file (media mode)
- [>] • Move selection down (menu and list modes)
- [>] • Fast Forward (press and hold)
- [+] • Volume up (media playback mode)
- [-] • Volume down (media playback mode)
- [<] • Power on / off (press and HOLD)
- [<] • Return to previous screen

Music

To listen to audio files, select **"music"** from the home screen. The music control screen will open and music starts playing.

Music control screen

Use the touch screen icons as shown below to navigate the music control screen:



i You can also use the control buttons to navigate the music control screen. Refer to "Using the Player > Control buttons".

Volume control

To control the music volume, press the **[+]** or **[-]** buttons on the player, or touch and drag the volume control bar on the touch-screen.



Music browser screen

Use the **[◀]** or **[▶]** button to select a music file, and press the **[⊞]** button to start playing the selected track.

or

use the touch-screen to make a selection (tap once to select a file, tap twice to open a file).



Searching music files



To search for music files on the player select **"Browser"** from the music playback screen then select **"Main Dir"**

or

to search the Micro SD card select **"Browser"** from the music playback screen then **"Card Dir"** (if a card is inserted).

Deleting music files



To delete music files on the player open the music browser, then use the **[◀]** or **[▶]** button to select a file then press the **"delete"** icon on the touch-screen.

i It is also possible to delete files on the player while connected to the computer. Select the file and press the **"delete"** key of the computer's keyboard.

Adding songs to your favorites



1. While music is playing press the **"Settings"** icon.
2. Select **"Favorites"**.
3. Select from 1 of the 5 **"Favorites"** lists by double tapping the list. The song will be saved to the chosen list.

Listening to your favorites



1. From the music playback screen select the **"Browser"** icon.
2. Select **"Favorites"**.
3. Select from 1 of the 5 **"Favorites"** lists.
4. Select the track you would like to play.

Videos

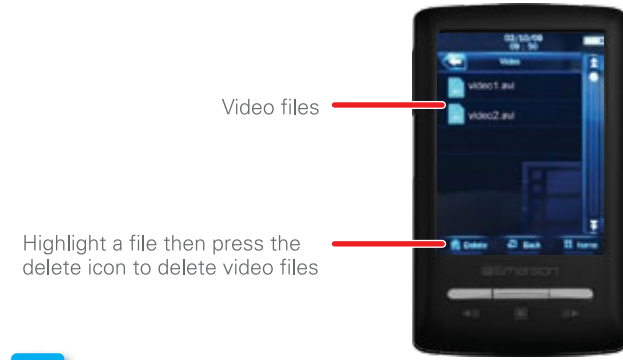
To watch videos, select **"video"** from the home screen. The video browser screen appears. Please refer to **"Converting Videos"** before transferring videos files to the player.

Video browser screen

Use the **[◀]** or **[▶]** button to select a video file, and press the **[⊞]** button to start playing the selected video.

or

use the touch-screen to make a selection (tap once to select a file, tap twice to open a file).



i To view videos stored on the Micro SD card (if inserted), open the video control screen, select the **"Browser"** icon then select **"Card Dir"**.

While a video is playing, tap the screen to open the video control menu.

Video control screen

Use the touch screen icons as shown below to navigate the video control screen:



i You can also use the control buttons to navigate the video control screen. Refer to "Using the Player > Control buttons".

Photos

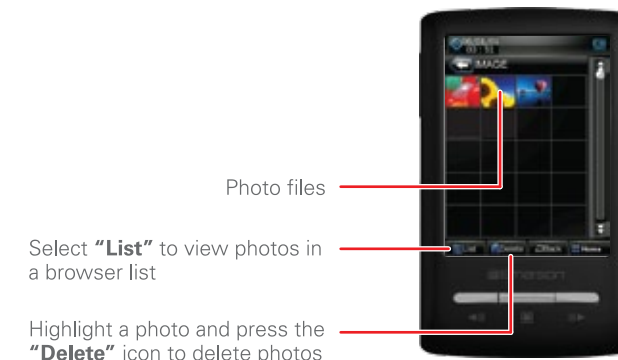
To view photos, select **"photos"** from the home screen. The photo browser screen appears.

Photo browser screen

Use the **[◀]** or **[▶]** button to scroll through the **"IMAGE"** folder and select a photo you would like to view, then press the **[⊞]** button to open the photo

or

use the touch-screen to make a selection (tap once to select a photo, tap twice to open a photo).

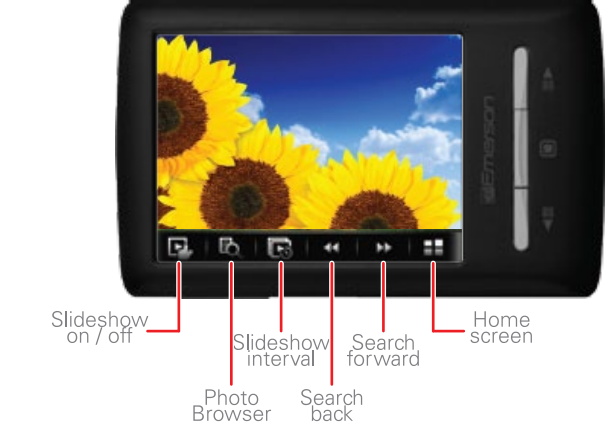


i To view photos stored on the Micro SD card (if inserted), open the photo control screen, select the **"Browser"** icon, then select **"Card Dir"**.

With an image open, tap the screen to open the photo control screen.

Photo control screen

Use the touch screen icons as shown below to navigate the photo control screen:



i To view all pictures in slideshow mode, select the **"Slideshow"** icon. Use this button to switch between automatic and manual slideshow viewing

Record

To record voice memos, select **"record"** from the home screen.

1. To start recording a voice memo, press the **[⊞]** button or the **[⊞]** icon on the touch-screen.
2. To pause recording, press the **[⏸]** icon on the touch-screen.
3. To continue recording within the same memo (un-pause) press the **[⏸]** icon on the touch-screen.
4. To stop recording and save press the **[⊞]** button or the **[⊞]** icon on the touch-screen.

*Note: The **[⊞]** button will stop, save, and return to the homescreen. The **[⊞]** icon will stop, save, and remain on the record control screen.*

5. To listen to recorded voice memos, press the **[⊞]** icon on the touch-screen.

Record control screen

Use the touch-screen icons as shown below to navigate the record control screen.



i Use the settings icon to change recorded voice memo options.

Browser

Browser

To view or delete files on the player or Micro SD card, select **"browser"** from the home screen, then select **"Flash Dir"** or **"Card Dir"**.

Use the **[◀]** or **[▶]** button to select a folder or file, and press the **[⊞]** button to open the folder or view the file

or

use the touch-screen to make a selection (tap once to select, tap twice to open).



browser directory

Settings

To customize the player, select **"settings"** from the home screen. You can adjust various settings such as power usage, language, display, and more.



i Adjust the **"Backlight Time"** (located under **"Display"**) and **"Power Off Time"** options to extend and optimize battery performance.

Legal Information

FCC Part 15:
This equipment has been tested and found to comply with the requirements for a Class B digital device under Part 15 of the Federal Communications Commission (FCC) rules. These requirements are intended to provide reasonable protection against harmful interference in a residential installation. This equipment generates, uses and can radiate radio frequency energy and, if not installed and used in accordance with the instructions, may cause harmful interference to radio communications. However, there is no guarantee that interference will not occur in a particular installation. If this equipment does cause harmful interference to radio or television reception, which can be determined by turning the equipment off and on, the user is encouraged to try to correct the interference by one or more of the following measures:
• Re-orient or relocate the receiving antenna.
• Increase the separation between the equipment and receiver.
• Connect the equipment into an outlet on a circuit different from that to which the receiver is connected.
• Consult the dealer or an experienced radio/TV technician for help.

Do not attempt to repair or modify this equipment.

Warning: Changes or modifications to this equipment not expressly approved by the party responsible for compliance could void the user's authority to operate the equipment.

This device complies with Part 15 of the FCC Rules. Operation is subject to the following two conditions:
(1) this device may not cause harmful interference, and
(2) this device must accept any interference received, including interference that may cause undesired operation.

Copyright Information:
Trademarks and trade names used in this instruction manual are owned by their respective companies or organizations.

Unauthorized duplication of any recordings whether downloaded from the Internet or made from audio CDs is a violation of copyright laws and international treaties. The making of unauthorized copies of copy-protected material, may be an infringement of copyrights and constitute a criminal offense. This equipment should not be used for such purposes.

Troubleshooting

- Can not power on**
 - The battery may be exhausted, please recharge the battery.
- Files can not be transferred to the player**
 - Check if the driver is installed correctly in the computer by disconnecting and then reconnecting the player to the computer
 - Check the connection between the player and PC, and confirm the USB cable is properly connected.
- No sound from the headphones**
 - Please ensure the volume is turned up, and the headphones are properly connected.
 - Check if the format of music file is supported by the player.
- Can not record**
 - Check if there is enough memory and battery capacity.
- Display is in the wrong language**
 - Please ensure you selected the correct language from the "Settings" menu.
- I cannot display my .jpg files**
 - Many digital cameras and image editing softwares add hidden data to the .jpg files. This data can prevent the player from loading the images. Try to eliminate them by saving the file with another name.
- Resetting the player**
 - If the player malfunctions, you can use the reset function to restart it.
 - To reset the player, take a metal pin (such as the end of a paperclip), and push it into the RESET hole to restart the player.

Limited Warranty

In the unlikely event that this product is defective, or does not perform properly, you may within ninety (90) days from your original date of purchase return it to the authorized service center for repair or exchange.

- TO OBTAIN WARRANTY SERVICE:**
- Provide proof of the date of purchase within the package (Dated bill of sale).
 - Prepay all shipping costs to the authorized service center, and remember to insure your return.
 - Include a return shipping address (no P.O. Boxes), a telephone contact number, and the defective unit within the package.
 - Describe the defect or reason you are returning the product.

Your product will be repaired or replaced, at our option, for the same or similar model of equal value if examination by the service center determines this product is defective. Products received damaged as a result of shipping will require you to file a claim with the carrier.

The shipping address of the authorized service center is:

Southern Telecom, Inc.
Attention: Customer Service (2nd Floor)
14-C 53rd Street
Brooklyn, NY 11232

Should you have any questions or problems concerning this product, please contact our customer service department at:

Customer Support:
☎ 1-877-768-8483 (Toll Free)
✉ cs@southerntelecom.com

Monday - Thursday: 9AM - 5PM (EST)
Friday: 9AM - 3PM (EST)

www.southerntelecom.com

Warranty service not provided
This warranty does not cover damage resulting from accident, misuse, abuse, improper installation or operation, lack of reasonable care, and unauthorized modification. This warranty is voided in the event any unauthorized person opens, alters or repairs this product. All products being returned to the authorized service center for repair must be suitably packaged.

Limitation of Warranty:

• THE WARRANTY STATED ABOVE IS THE ONLY WARRANTY APPLICABLE TO THIS PRODUCT. ALL OTHER WARRANTIES, EXPRESS OR IMPLIED (INCLUDING ALL IMPLIED WARRANTIES OF MERCHANTABILITY OR FITNESS FOR A PARTICULAR PURPOSE) ARE HEREBY DISCLAIMED. NO VERBAL OR WRITTEN INFORMATION GIVEN BY AIT, INC. IT'S AGENTS, OR EMPLOYEES SHALL CREATE A GUARANTEE OR IN ANY WAY INCREASE THE SCOPE OF THIS WARRANTY.

• REPAIR OR REPLACEMENT AS PROVIDED UNDER THIS WARRANTY IS THE EXCLUSIVE REMEDY OF THE CONSUMER. AIT, INC. SHALL NOT BE LIABLE FOR INCIDENTAL OR CONSEQUENTIAL DAMAGES RESULTING FROM THE USE OF THIS PRODUCT OR ARISING OUT OF ANY BREACH OF ANY EXPRESS OR IMPLIED WARRANTY ON THIS PRODUCT. THIS DISCLAIMER OF WARRANTIES AND LIMITED WARRANTY ARE GOVERNED BY THE LAWS OF THE STATE OF NEW YORK, EXCEPT TO THE EXTENT PROHIBITED BY APPLICABLE LAW, ANY IMPLIED WARRANTY OF MERCHANTABILITY OR FITNESS FOR A PARTICULAR PURPOSE ON THIS PRODUCT IS LIMITED TO THE APPLICABLE WARRANTY PERIOD SET FORTH ABOVE.

Some states do not allow the exclusion nor limitation of incidental or consequential damages, or limitations on how long an implied warranty lasts so the above limitations or exclusions may not apply to you. This warranty gives you specific legal rights, and you also may have other rights that vary from state to state.



Free Manuals Download Website

<http://myh66.com>

<http://usermanuals.us>

<http://www.somanuals.com>

<http://www.4manuals.cc>

<http://www.manual-lib.com>

<http://www.404manual.com>

<http://www.luxmanual.com>

<http://aubethermostatmanual.com>

Golf course search by state

<http://golfingnear.com>

Email search by domain

<http://emailbydomain.com>

Auto manuals search

<http://auto.somanuals.com>

TV manuals search

<http://tv.somanuals.com>