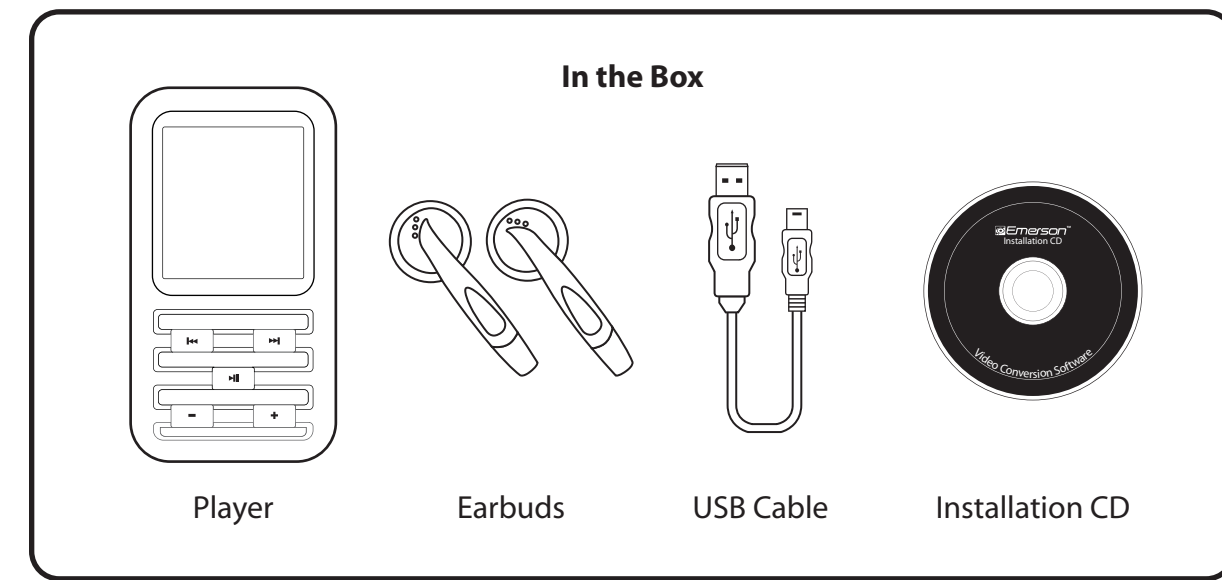


**Emerson™**  
**EMP415-2 Quick Start Guide**  
 \*FULL USER GUIDE PROVIDED ON THE CD



Main Buttons	Function	Action
1	Earphone jack	Connect with the supplied earbuds.
2	USB port	Connect to the computer with the supplied USB cable.
3	Screen	Screen display area
4	HOLD switch	Slide to lock or unlock the buttons.
5	[◀] button	Previous track/option. Fast backward search.
6	MIC	Built-in microphone for voice recording.
7	[V] button	Decrease the volume.
8	[▶] button	Open the main menu. Confirm the selection: Starts/Pause playback.
9	[+] button	Increases the volume.
10	RESET hole	Press the RESET hole with a metal pin if a malfunction occurs.
11	[▶] button	Next track/option. Fast forward search.
12	[⏻] button	Power on/off: Stop playback or recording. Open music/movie/Voice menu. Return to previous menu.
13	[A-B/REC] button	Activate the A-B repeat playback function in music or voice mode. Start recording.

1

**Getting Started**

1. Make sure your battery is charged enough, and connect the earphones correctly.
2. Press and hold the [⏻] button to turn on the player. The DISPLAY lights up. The MP3 player enters the Main menu with the Music option selected by default.
3. Press the [▶] button to enter the Music mode.
4. Press the [▶] button to start playing the music.

For more details on the player's function, please refer to the chapter "Basic Operation" below or the full user manual, located on the provided CD.

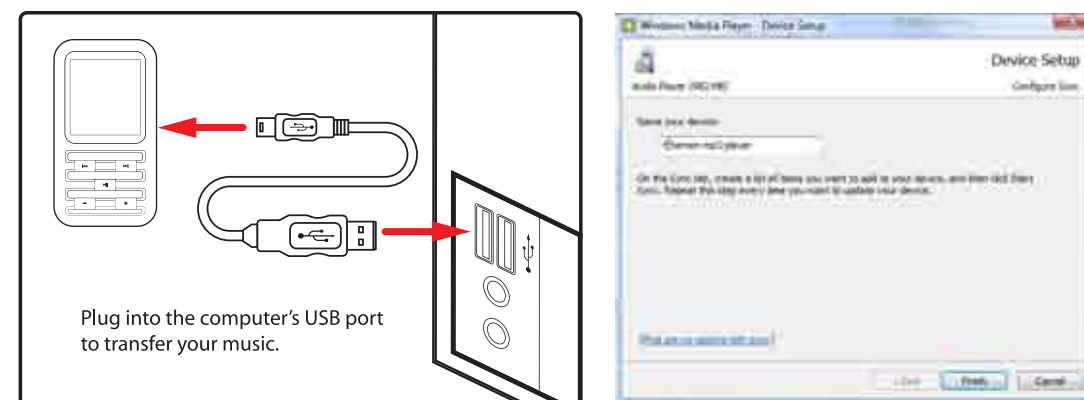
**Basic Operation**

Function	Action
Power on/off	<ul style="list-style-type: none"> <li>To turn on the player, press and hold the [⏻] button for two seconds.</li> <li>To turn off the player, press and hold the [⏻] button for two seconds.</li> </ul>
Adjusting the volume	<ul style="list-style-type: none"> <li>Press the [+] button to increase the volume.</li> <li>Press the [-] button to decrease the volume.</li> </ul>
Main menu	<ol style="list-style-type: none"> <li>1. Press and hold the [▶] button to enter the main menu.</li> <li>2. Use the [◀] or [▶] button to navigate among different modes: Music, Photo, Movie, Voice, MIC Record, E-Book, Setup, Delete and About.</li> <li>3. Press the [▶] button to confirm your selection.</li> </ol>
Listening to music	<ul style="list-style-type: none"> <li>Select Music in the main menu, and press the [▶] button to enter the music playback mode.</li> <li>To pause the playback, press the [⏻] button. To resume the playback, press the [▶] button again.</li> <li>To skip to the previous or next track, press the [◀] or [▶] button.</li> <li>To search backward or forward within a track, press and hold the [◀] or [▶] button.</li> <li>To set the A-B repeat play, press the [A-B/REC] button to set the beginning point A, press it again to set the ending point B, press for the 3rd time to cancel the A-B repeat function.</li> <li>To enter the music setting menu, press the [⏻] button while listening to the music.</li> </ul>
Viewing pictures	<ul style="list-style-type: none"> <li>Select Photo in the main menu, and press the [▶] button to enter the photo mode. The photo menu appears.</li> <li>To view pictures manually, select Manual using the [◀] or [▶] button and press the [▶] button. Press the [◀] or [▶] button to browse the previous or next photo.</li> <li>To play a slide show, select Slide Show and press the [▶] button. A slide show of all the pictures on your player will begin.</li> <li>To view pictures in thumbnails, select Thumbnail and press the [▶] button.</li> </ul>
Watching videos	<ul style="list-style-type: none"> <li>Select Movie in the main menu, and press the [▶] button to enter the movie mode. The first video will appear on the screen.</li> <li>To play the video, select a video file using the [◀] or [▶] button and press the [▶] button.</li> <li>To search backward or forward while watching a movie, press and hold the [◀] or [▶] button.</li> <li>To enter the video setting menu, press the [⏻] button in video STOP mode.</li> </ul> <p><b>Note:</b> This player only supports converted videos in the MTV format with 128x128 or less frame size. Use the Video Converter provided on the CD to convert your videos to this format.</p>

4

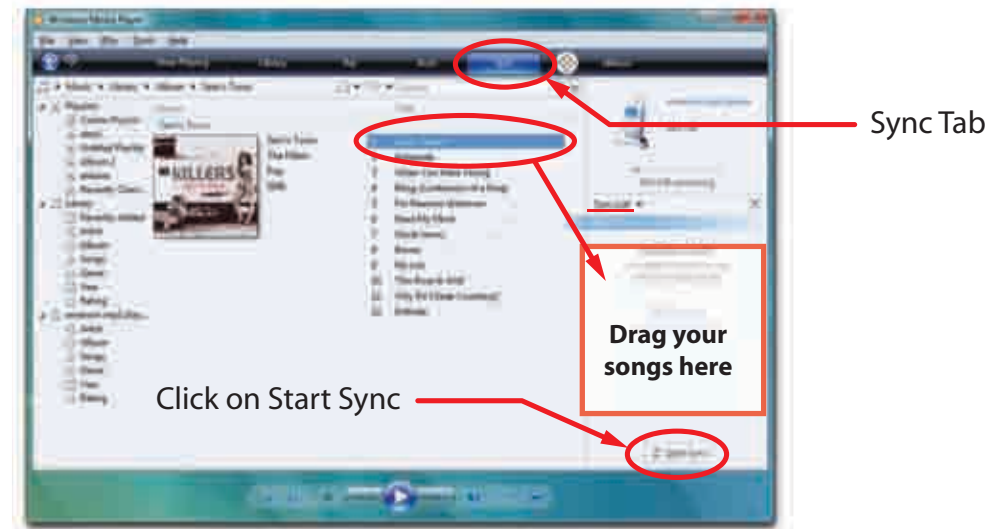
**Getting music on your mp3 player**

- 1) Open Windows Media Player.
- 2) Connect your mp3 player to the USB port of the computer.



Device Setup Window

- 3) Click on the "Sync" tab.
- 4) To easily identify your player within Windows Media Player, name it in the "Device Setup" screen.



Click on Start Sync

Sync Tab

Drag your songs here

- 5) Drag the songs you would like to sync to your mp3 player, and click on the "Start Sync" button.
- 6) The selected songs will sync to your mp3 player.

7

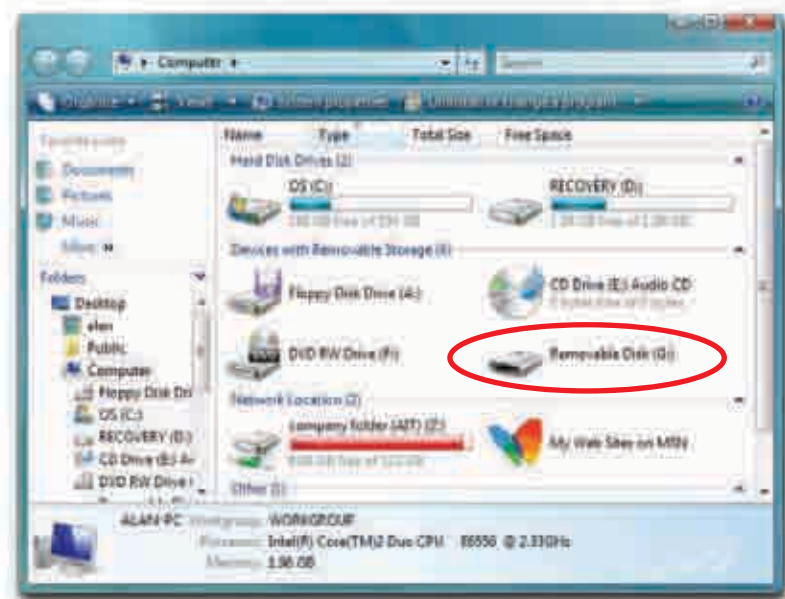
**Connecting to a Computer**

Connect the player to a computer for downloading files such as Music, Pictures, or Text or charging the player.

1. Plug the larger USB connector of the supplied USB cable into the USB port on the computer.
2. Plug the other end (the smaller end) of the USB cable to the player.
3. The computer system detects "New hardware" and starts to install the driver automatically. Wait for the system to finish the installation.



When it has finished, a new "Removable Disk" will appear in "My Computer".



2

Voice Recording and playback	<ul style="list-style-type: none"> <li>Select Mic Record in the main menu, and press the [▶] button to start voice recording. Or press and hold the [A-B/REC] button in music or voice mode to start voice recording.</li> <li>To pause the recording, press the [⏻] button. To resume the recording, press the [▶] button again.</li> <li>To complete or exit the recording, press the [⏻] button. The player will return to main menu.</li> <li>To listen to the recordings, select Voice in the main menu, and press the [▶] button to play the recordings.</li> </ul>
Reading E-book	<ul style="list-style-type: none"> <li>Select E-Book in the main menu, and press the [▶] button to enter the E-book mode.</li> <li>To select a file or folder, press the [◀] or [▶] button. And press the [▶] button to enter.</li> <li>To move to the previous or next page while reading an E-book, press the [◀] or [▶] button.</li> <li>To skip to next page automatically, press the [▶] button. Press the [▶] button again to stop the automatic skipping.</li> </ul>
Settings	<ul style="list-style-type: none"> <li>Select Settings in the main menu, and press the [▶] button.</li> <li>To select a sub-menu or option, press the [◀] or [▶] button.</li> <li>To enter the sub-menu or confirm an option, press the [▶] button.</li> <li>To return to the previous directory, press the [⏻] button.</li> </ul>
Deleting Files	<ul style="list-style-type: none"> <li>Select Delete in the main menu, and press the [▶] button.</li> <li>To delete a file, select it and press the [▶] or [⏻] button.</li> <li>To delete a folder, select it and press the [⏻] button.</li> </ul>

**Windows Media Player**

To organize and play your music, rip CD tracks to your hard drive, and transfer music, pictures, and media files to your player, we recommend using **Windows Media Player**. If Windows Media Player is not installed in your computer, you may download the latest version (Windows Media Player 11) of the player from:

[www.microsoft.com/windows/windowsmedia/player/download/](http://www.microsoft.com/windows/windowsmedia/player/download/)

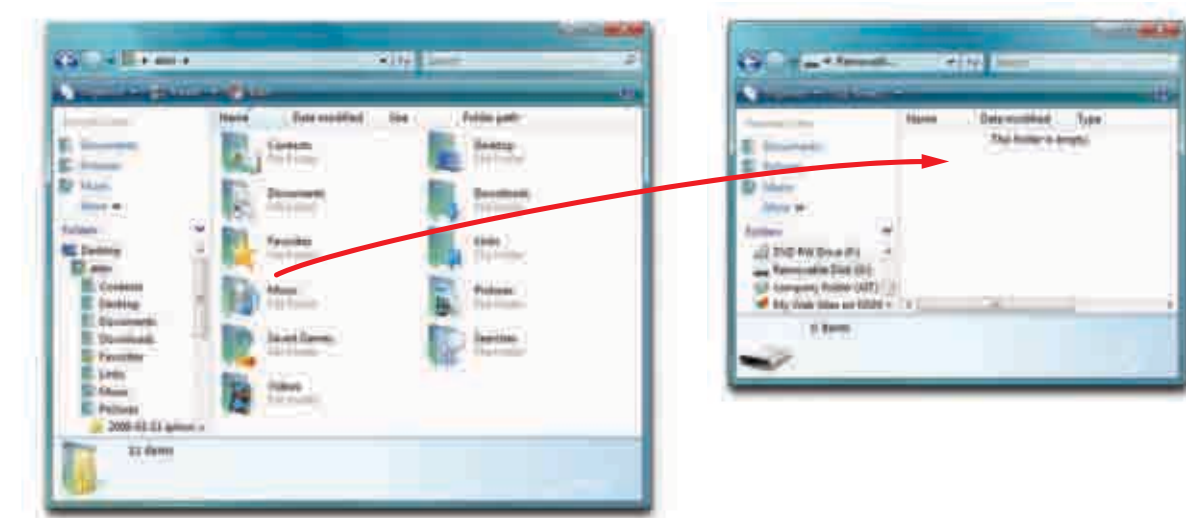
If you are unsure of which version of Windows Media Player is compatible with your operating system, you may use the link below for more information regarding previous versions of the Windows Media Player.

[www.microsoft.com/windows/windowsmedia/player/versions.aspx](http://www.microsoft.com/windows/windowsmedia/player/versions.aspx)

5

**Downloading Files to the Player**

1. Open the Windows Explorer or My Computer, and "Removable Disk" is displayed.
2. Select the files on your computer and simply move it into the "Removable Disk" in the usual way (drag and drop, or copy and paste). After copying is completed, the data will be available on the player.



**Note:** Please do not disconnect the USB cable during loading. It may cause a malfunction of the player and the files.

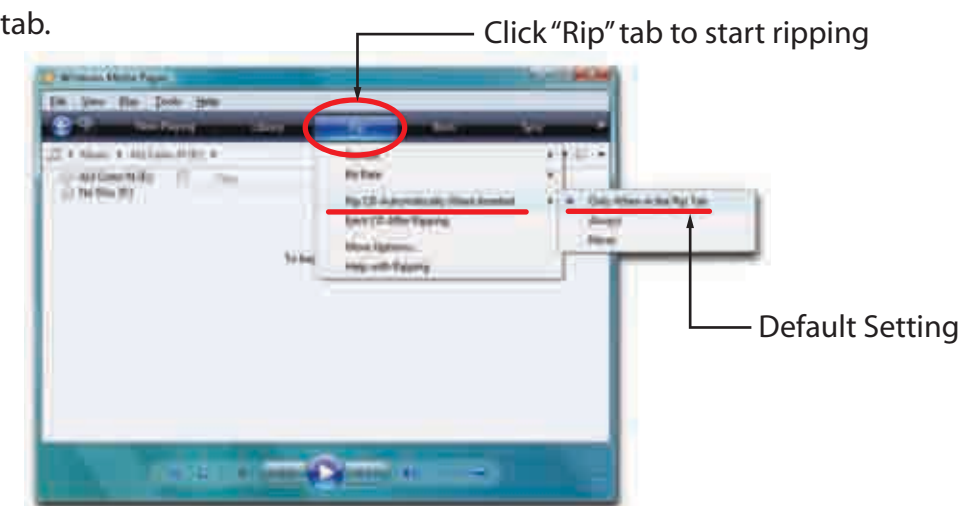


If this window appears when transferring files, check that the "HOLD" button is not on the Hold/Lock position.

3

**Getting Music on your computer**

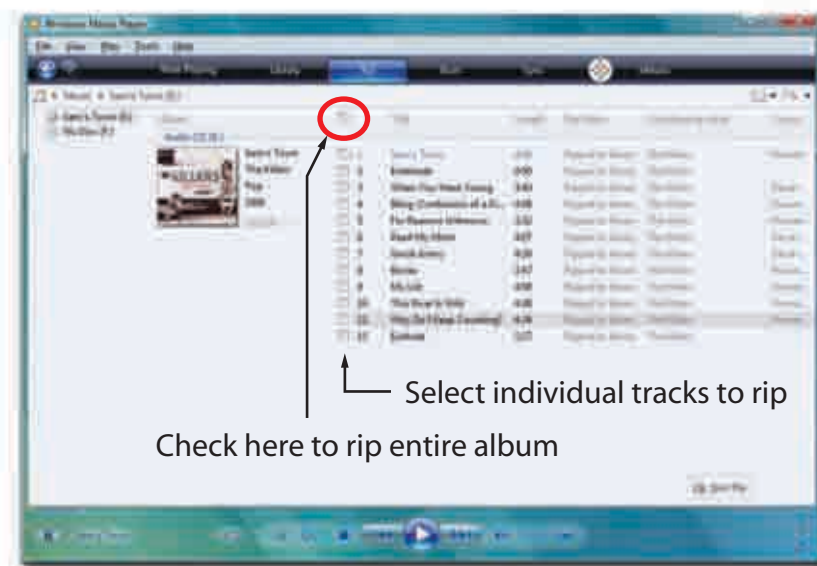
- 1) Open Windows Media Player.
- 2) Click on the "Rip" tab.



Click "Rip" tab to start ripping

Default Setting

- 3) Insert a music CD into the CD-ROM drive of your computer.
- 4) Click the checkboxes to select which tracks to rip. If you would like to rip the entire album, click the checkbox next to "Album".



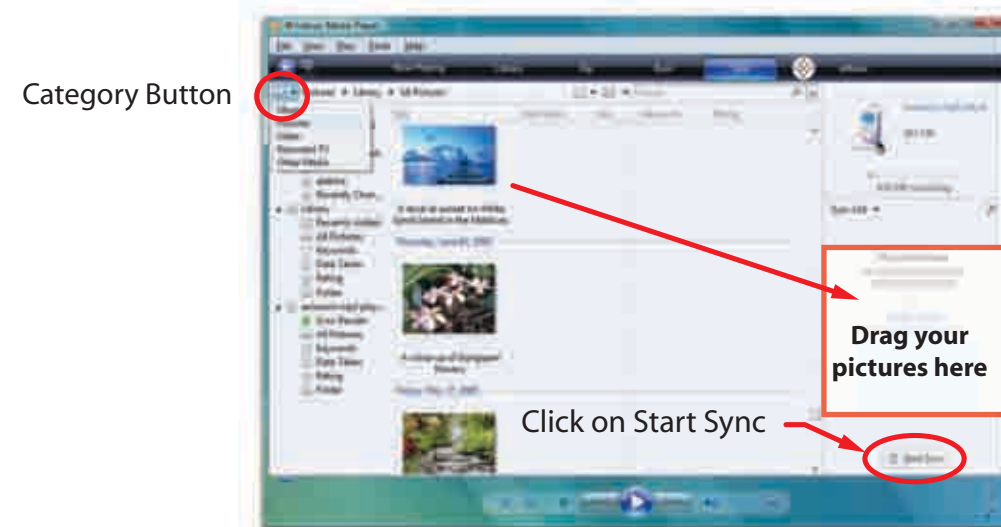
Select individual tracks to rip

Check here to rip entire album

6

**Getting pictures on your mp3 player**

- 1) Open Windows Media Player.
- 2) Click on the "Category" button circled below.



Category Button

Drag your pictures here

Click on Start Sync

8

- 3) Select "Pictures".
- 4) Windows Media Player will display the pictures you have on your computer.
- 5) Connect your mp3 player to the USB port of the computer.
- 6) Drag the pictures you would like to sync to your mp3 player, and click on the "Start Sync" button.
- 7) The selected pictures will sync to your mp3 player.

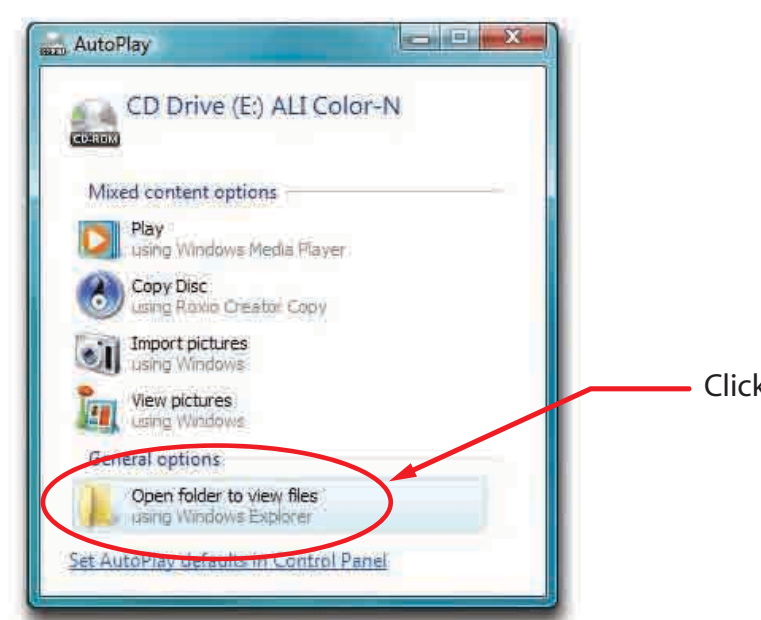
\* Refer to page 4 (Basic Operation) or the complete User Guide located on the provided CD for more information regarding viewing pictures on your mp3 player.

\*\* You may also transfer pictures and other media files by simply dragging them into "Removable Disk". See "Downloading Files to the player" on page 3.

**Converting Video to MTV Format**

This player supports the playback of videos in MTV format. Other format (e.g. \*.mpg, \*.rm, \*.rmvb, \*.wmv) must be converted to MTV format. The MTV Video Converter is supplied on the CD to enable you to convert the other formats to MTV format.

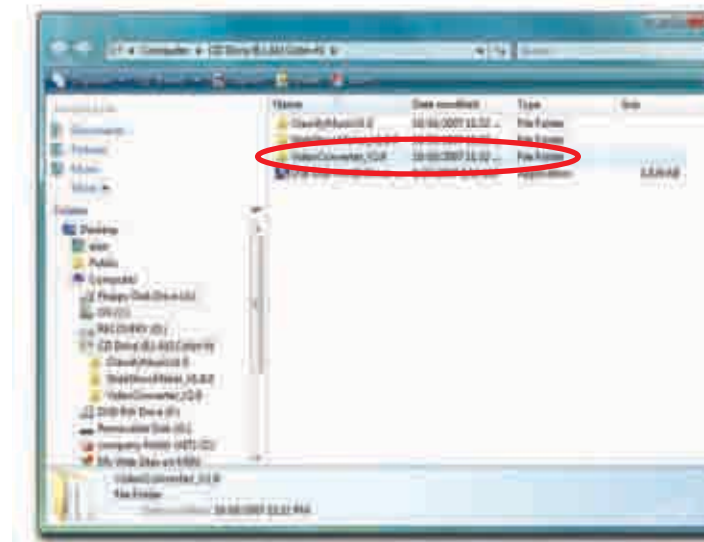
- 1) Insert the provided CD to the CD-ROM drive of your computer.



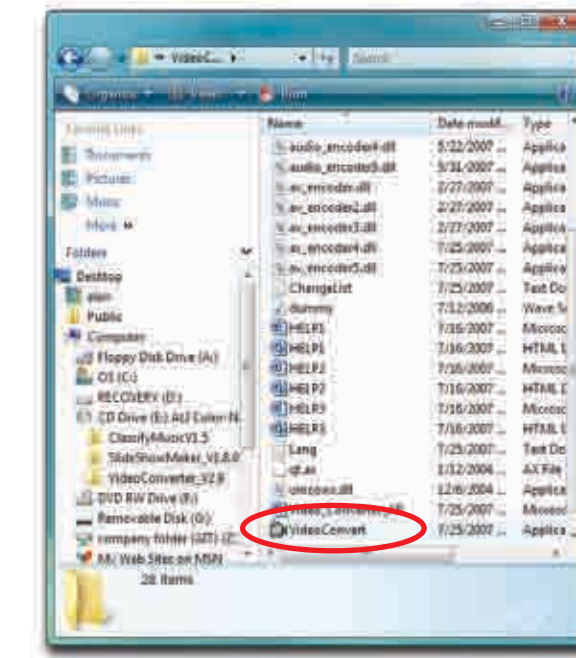
Click

9

- 2) Double click the folder "VideoConverter" in the CD to open it.

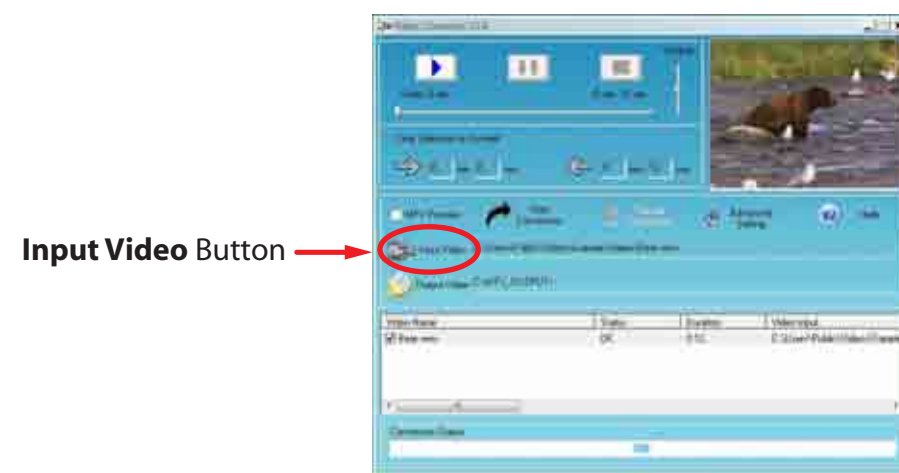


- 3) Double click on "VideoConvert.exe" to open the video converter.



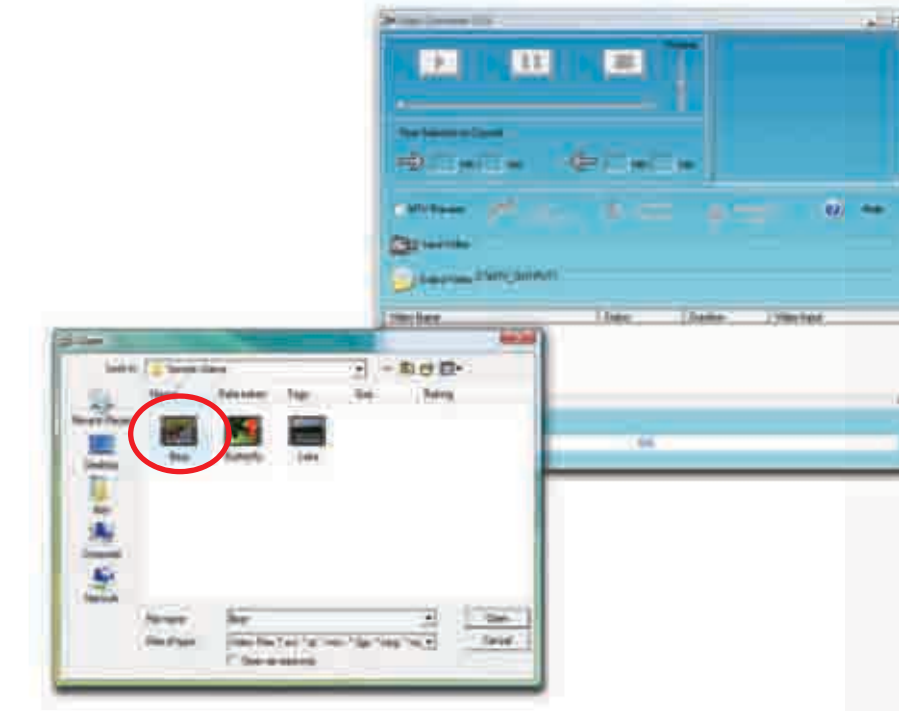
10

- 4) Click on **Input Video**, and search for videos on your computer.



Input Video Button

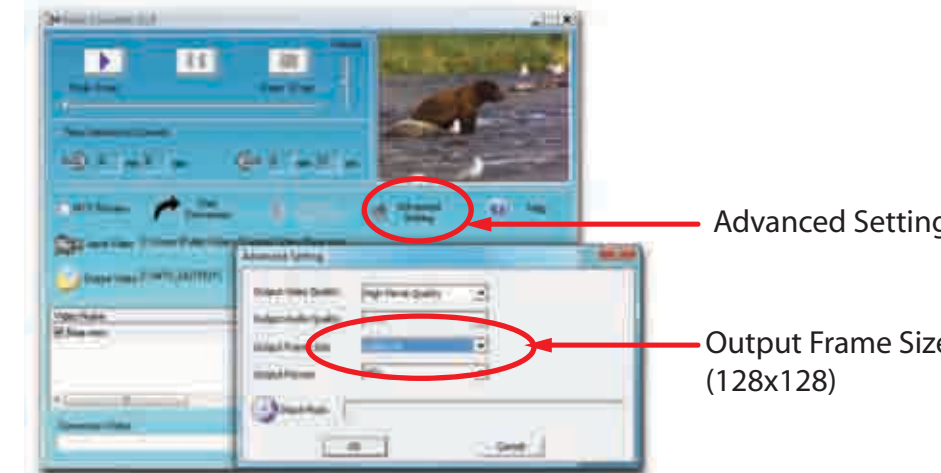
- 5) Double click on the video you would like to convert.



11

- 6) Click on **Advanced Settings**, and select 128x128 as the Output Frame Size.

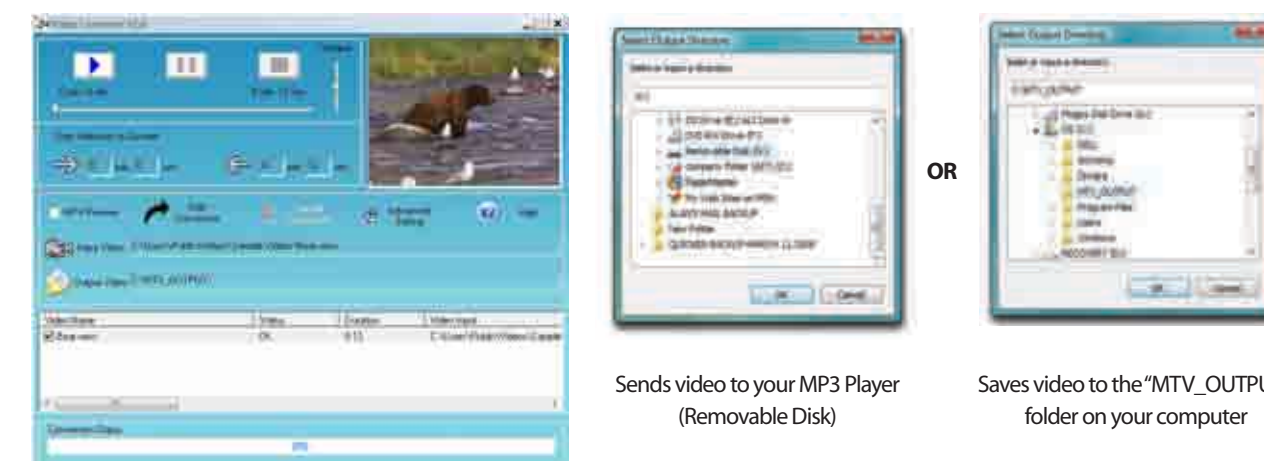
To get the best resolution and make your video playable on the player, you must select **128x128** or less in the **Output Frame Size** box (Advanced Setting), and select **MTV** in the **Output Format** box.



Advanced Setting

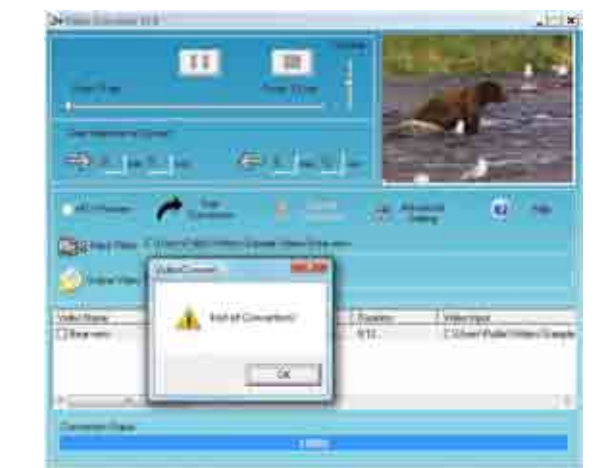
Output Frame Size (128x128)

- 7) Click on **Output Video** to select the destination for the converted video. You can send it directly to your player by selecting "Removable Disk", and clicking **OK**, or the default setting will save the video to the MTV output folder on your computer.



12

- 8) The video is converted, and can be viewed on your MP3 Player.



\* The complete user guide for your MP3 Player, which includes detailed descriptions of features, and important warranty information is located on the provided CD.



Manufactured by: AIT Inc. Brooklyn NY, 11232  
 Emerson and the G-Clef logo are registered trademarks of Emerson Radio Corp.  
 Parsippany, New Jersey USA.  
 © 2008 AIT Inc. All rights reserved.

Microsoft, the Windows logo, and Windows Media are either registered trademarks of Microsoft Corporation in the United States and / or other countries.

13

## Free Manuals Download Website

<http://myh66.com>

<http://usermanuals.us>

<http://www.somanuals.com>

<http://www.4manuals.cc>

<http://www.manual-lib.com>

<http://www.404manual.com>

<http://www.luxmanual.com>

<http://aubethermostatmanual.com>

Golf course search by state

<http://golfingnear.com>

Email search by domain

<http://emailbydomain.com>

Auto manuals search

<http://auto.somanuals.com>

TV manuals search

<http://tv.somanuals.com>