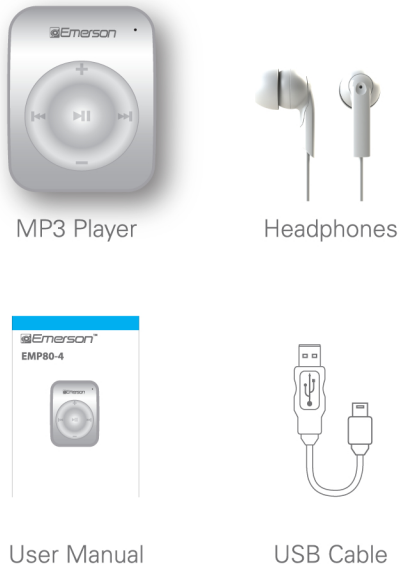




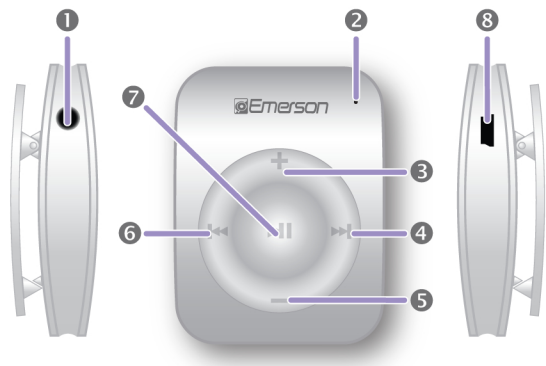
EMP80-4



In the box



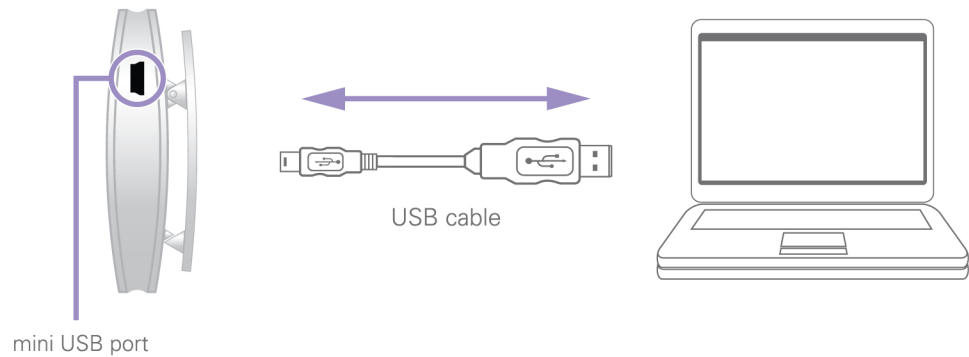
Location of controls



- 1 Headphone jack
- 2 LED light
- 3 Volume up
- 4 Next / Fast forward (HOLD)
- 5 Volume down
- 6 Previous / Rewind (HOLD)
- 7 Play / Pause / Power (HOLD)
- 8 Mini USB port

Charging the battery

1. Connect the small end of the supplied USB cable to the mini USB port on the side of the player.
2. Connect the large end of the supplied USB cable to an available port on your computer.
3. Charge the battery between 3-5 hours. Do not charge for more than 8 hours.



i Be sure to fully charge the player before using it for the first time.

Basic operation

Playing music

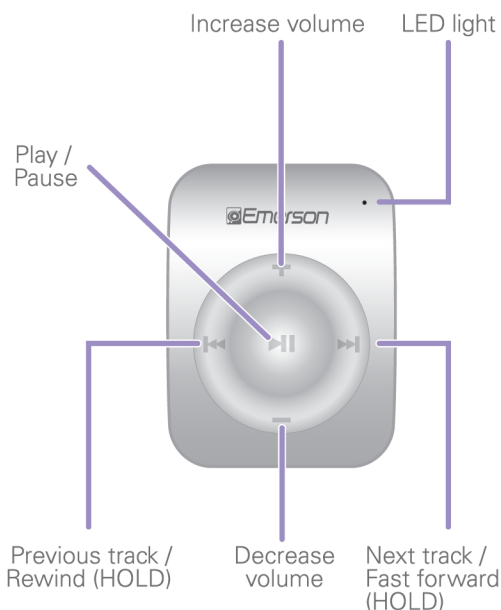
1. To play music press the [▶||] button, the LED will stay solid to show that the player is on and playing music.
2. To pause music, press the [▶||] button, the LED light will blink once every second to show that the player is on and paused.



- [▶||] - Play / Pause music
- [◀◀] - Previous track / Rewind (HOLD)
- [▶▶] - Next track / Fast forward (HOLD)
- [+] - Increase volume
- [-] - Decrease volume

Turning on / off

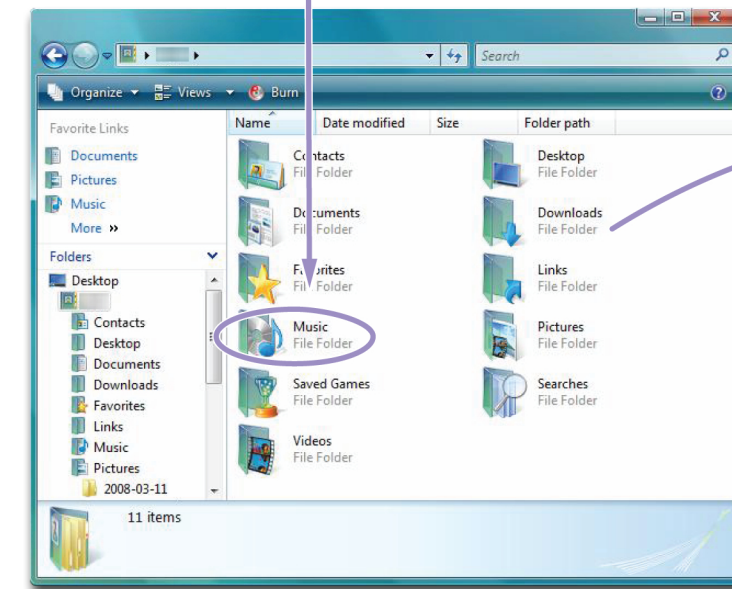
1. To turn on the player, press the [▶||] button, the LED light will turn on and music playback will begin.
2. To turn off the player, press and HOLD the [▶||] button until the LED light flashes several times and then turns off.



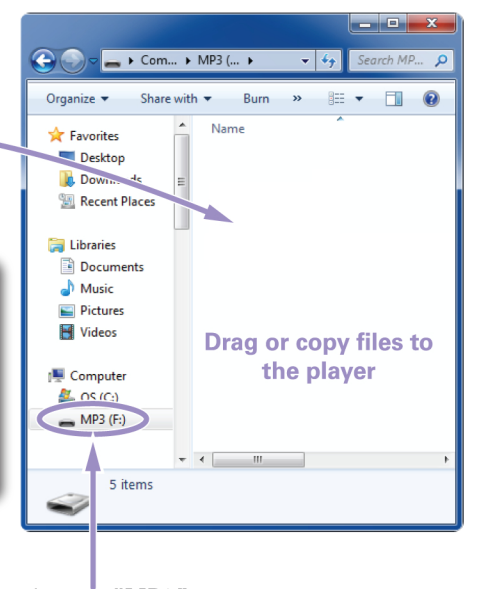
i • When music is playing, the LED will stay solid
• When music is paused the LED will flash

Transferring media files to the player

1. Find music files on your computer. (Supported file formats: MP3, WMA)
2. Connect the MP3 Player to your computer, and locate "MP3".
3. Drag and drop or copy and paste the files into the player as shown below:



i It is also possible to delete files on the player while connected to the computer. Select the file and press the delete key of the computer's keyboard.
Do not disconnect the player during file transfers as this may damage the player and/or your files.



*Screenshots above may be slightly different than your computer's operating system.

Shuffle play

To Shuffle or playback the music stored on the player randomly, follow the instructions below:

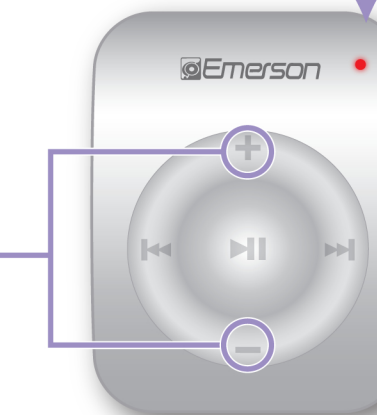
Activate Shuffle: Press the [VOL +] and [VOL -] buttons together for 2 full seconds, the LED will flash four times to show you are in shuffle mode (random playback of music).

Normal Playback: Press the [VOL +] and [VOL -] buttons together for 2 full seconds, the LED will flash twice to show you are in normal playback mode (playback of music in order).

Press and hold together for two full seconds to switch between normal and shuffle play modes



The following chart shows the LED function of various play and pause modes:



Play mode	LED function
Normal play (music playing)	2 flashes then solid
Normal play (music paused)	2 flashes then flashing
Shuffle play (music playing)	4 flashes then solid
Shuffle play (music paused)	4 flashes then flashing

Legal information

FCC Part 15: This device complies with Part 15 of the FCC Rules. Operation is subject to the following two conditions:
(1) this device may not cause harmful interference, and
(2) this device must accept any interference received, including interference that may cause undesired operation.

Warning: Changes or modifications to this equipment not expressly approved by the party responsible for compliance could void the user's authority to operate the equipment.

NOTE: This equipment has been tested and found to comply with the requirements for a Class B digital device under Part 15 of the Federal Communications Commission (FCC) rules. These requirements are intended to provide reasonable protection against harmful interference in a residential installation. This equipment generates, uses and can radiate radio frequency energy and, if not installed and used in accordance with the instructions, may cause harmful interference to radio communications.

However, there is no guarantee that interference will not occur in a particular installation. If this equipment does cause harmful interference to radio or television reception, which can be determined by turning the equipment off and on, the user is encouraged to try to correct the interference by one or more of the following measures:

- Reorient or relocate the receiving antenna.
- Increase the separation between the equipment and receiver.
- Connect the equipment into an outlet on a circuit different from that to which the receiver is connected.
- Consult the dealer or an experienced radio/TV technician for help.

Do not attempt to repair or modify this equipment.
Shielded USB cables must be used with this unit to ensure compliance with the Class B FCC limits.

PLR IP Holdings, LLC, its licensees and affiliates, fully support all electronic waste initiatives. As responsible stewards of the environment, and to avoid violating established laws, you should properly dispose of this product in compliance with all applicable regulations, directives or other governmental laws in the area where you reside. Please check with local authorities or the retailer where you purchased this product to determine a location where you can appropriately dispose of the product.

You may also go to [HYPERLINK "http://www.polaroid.com"](http://www.polaroid.com) www.polaroid.com and reference About / Electronic Recycling to learn more about the specific laws in your area and to locate a collection facility near your home.

If your electronic device has internal memory on which personal or other confidential data may be stored, you may want to perform a data sanitization process before you dispose of your device to ensure another party cannot access your personal data. Data sanitization varies by the type of product and its software, and you may want to research the best sanitization process for your device before disposal. You may also check with your local recycling facility to determine their data sanitization procedures during the recycling process.

Limited warranty

This product as supplied and distributed new by AIT, Inc. ("AIT") to the original consumer purchaser is warranted by AIT against defects in material and workmanship for a period of one year from your date of purchase ("Warranty"). In the unlikely event that this product is defective, or does not perform properly, you may within one year from your original date of purchase return it to the authorized service center for repair or exchange.

TO OBTAIN WARRANTY SERVICE:

- Provide proof of the date of purchase within the package (Dated bill of sale).
- Prepay all shipping costs to the authorized service center, and remember to insure your return.
- Include a return shipping address (no P.O. Boxes), a telephone contact number, and the defective unit within the package.
- Describe the defect or reason you are returning the product.

Your product will be repaired or replaced, at our option, for the same or similar model of equal value if examination by the service center determines this product is defective. Products received damaged as a result of shipping, will require you to file a claim with the carrier.

The shipping address of the authorized service center is:

Southern Telecom, Inc.
Attention: Customer Service (2nd Floor)
14-C 53rd Street
Brooklyn, NY 11232

Should you have any questions or problems concerning this product, please contact our customer service department at:

Customer Support:
1-877-768-8483 (Toll Free)
cs@southerntelecom.com

Monday - Thursday: 9AM - 5PM (EST)
Friday: 9AM - 3PM (EST)

www.southerntelecom.com



Free Manuals Download Website

<http://myh66.com>

<http://usermanuals.us>

<http://www.somanuals.com>

<http://www.4manuals.cc>

<http://www.manual-lib.com>

<http://www.404manual.com>

<http://www.luxmanual.com>

<http://aubethermostatmanual.com>

Golf course search by state

<http://golfingnear.com>

Email search by domain

<http://emailbydomain.com>

Auto manuals search

<http://auto.somanuals.com>

TV manuals search

<http://tv.somanuals.com>