



EMP855

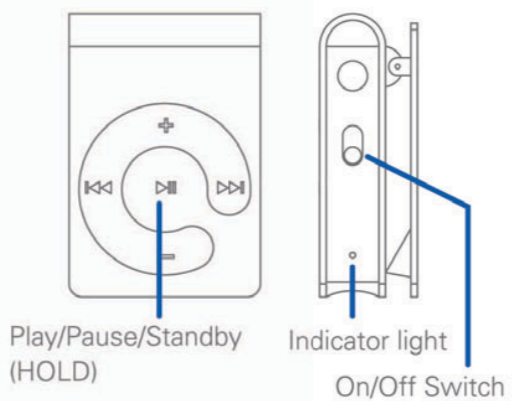


User Guide

In the box



Basic Operation

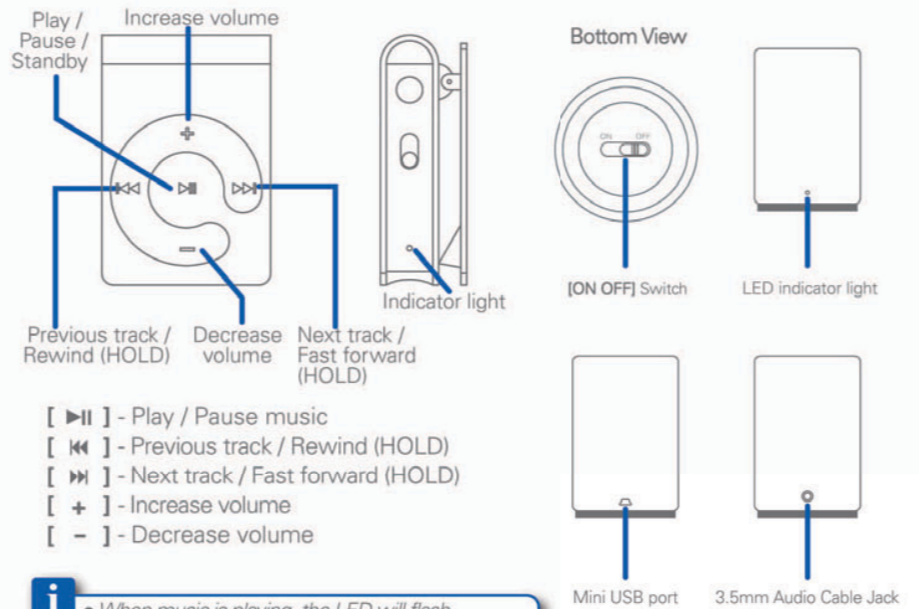


Turning on / off

- To turn on the player, slide the **ON/OFF** switch left to the On position. The indicator light will flash, and music playback will begin.
- To turn off the player, slide the **ON/OFF** switch right to the Off position. Music playback will stop, and the indicator light will shut off.

Standby

- When the player is On, press and hold the **[Play/Pause/Standby]** button. The indicator light will flash, and player will remain on Standby.
- To resume Playback, quickpress the **[Play/Pause/Standby]** button. The indicator light will begin to flash, and music playback will resume.



- [Play/Pause/Standby]** - Play / Pause music
- [Previous track / Rewind (HOLD)]** - Previous track / Rewind (HOLD)
- [Next track / Fast forward (HOLD)]** - Next track / Fast forward (HOLD)
- [+]** - Increase volume
- [-]** - Decrease volume

- i** When music is playing, the LED will flash
- When music is paused the LED will stay solid

Playing music

- To play music press the Play/Pause/Standby button **[Play/Pause/Standby]**. The Indicator light will flash to show that the player is on and playing music.
- To pause music, press the Play/Pause/Standby button **[Play/Pause/Standby]**. The Indicator light will stay solid to show that the player is on and paused.

Using the Speaker



- To turn the speaker on, move the **ON/OFF** switch to ON. The LED indicator light will turn BLUE.
- To connect the speaker to the MP3 player, insert one end of the 3.5mm audio cable into the 3.5mm audio cable jack. Insert the opposite end of the 3.5mm audio cable into the Head phone Jack.
- To charge the speaker, connect the small end of the Mini USB cable to the Mini USB port on the side of the speaker. Connect the large end of the Mini USB cable to an available port on your computer. The LED indicator light will turn RED when charging. Charging takes approximately 2 hours total.

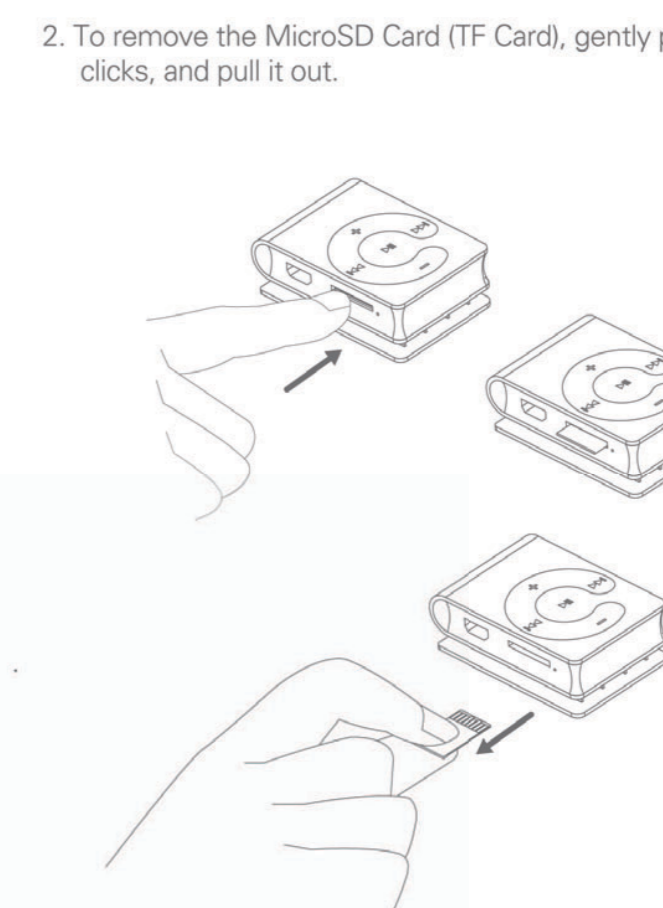
Inserting & Removing the Micro SD Card



- To insert the included MicroSD Card (TF Card), align the Micro SD card with the metal prongs facing up, and gently push it in until it clicks into place.
- To remove the MicroSD Card (TF Card), gently push in the card until it clicks, and pull it out.

i The MicroSD Card (TF Card) can only be inserted one way, do NOT use force when inserting or removing the SD card.

Indicator Light Functions



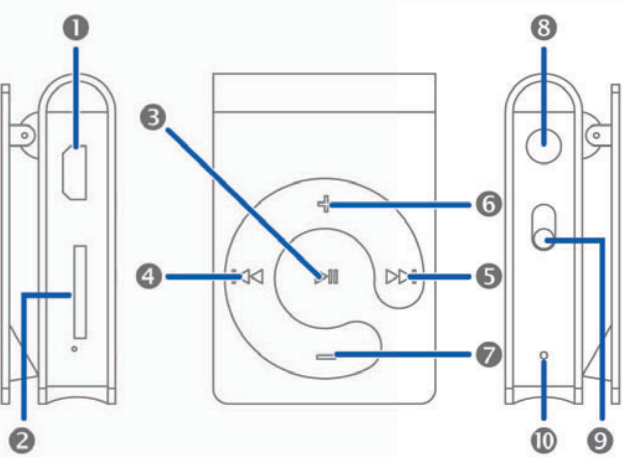
Play mode	Indicator light function
Normal play (music playing)	Indicator flashes
Normal play (music paused)	Indicator solid

i The battery takes 2-3 hours to be fully charged.

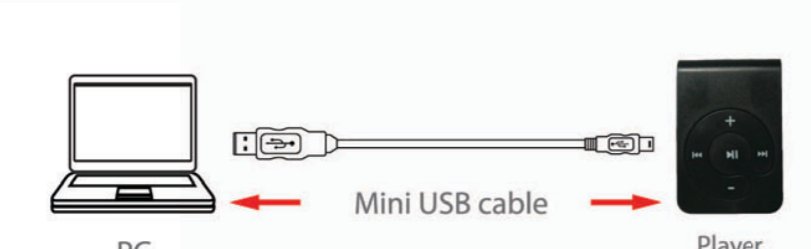
Location of Controls

Charging

Transferring media files to the player



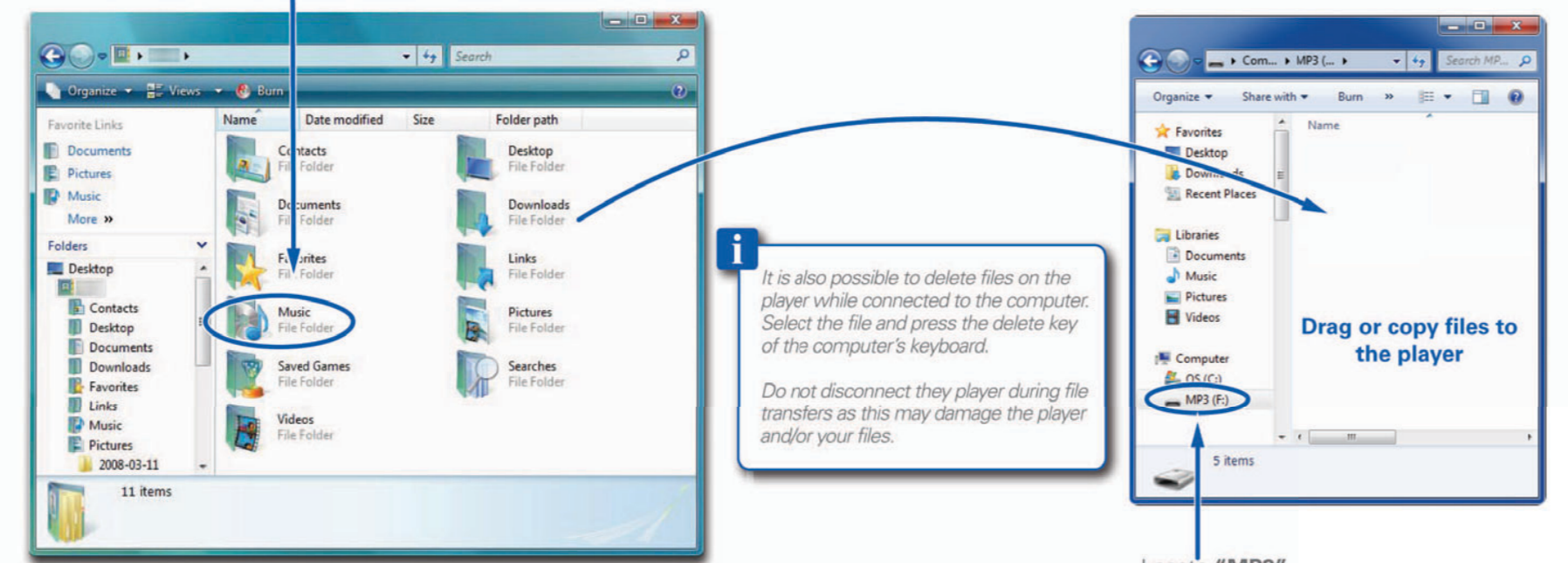
- 1 Mini USB Port
- 2 MicroSD Card (TF Card) Slot
- 3 **[Play/Pause/Standby (HOLD)]** Play/Pause/Standby (HOLD)
- 4 **[Previous / Rewind (HOLD)]** Previous / Rewind (HOLD)
- 5 **[Next / Fast forward]** Next / Fast forward
- 6 **[+]** Volume up
- 7 **[-]** Volume down
- 8 Headphone Jack
- 9 On/Off Switch
- 10 Indicator Light



1. Connect the small end of the supplied Mini USB cable to the mini USB port on the side of the player.
2. Connect the large end of the supplied Mini USB cable to an available port on your computer.
3. Charge the battery between 2-3 hours. Do not charge for more than 8 hours.
4. During charging, the indicator light flashes. When the player is fully charged, the indicator light will flash.

i Be sure to fully charge the player before using it for the first time.

1. Find music files on your computer. (Supported file formats: MP3)
2. Connect the MP3 Player to your computer, and locate **"MicroSD (TF)"**.
3. Drag and drop or copy and paste the files into the player as shown below:



*Screenshots above may be slightly different than your computer's operating system.

i It is also possible to delete files on the player while connected to the computer. Select the file and press the delete key of the computer's keyboard.

Do not disconnect the player during file transfers as this may damage the player and/or your files.

Troubleshooting

- Can not power on**
 - The battery may be exhausted, please recharge the battery.
 - Check that the **ON/OFF** switch is in the **ON** position.
- Files can not be transferred to the player**
 - Check if the driver is installed correctly on the computer by disconnecting and then reconnecting the player to the computer.
 - Check the connection between the player and PC, and confirm the Mini USB cable is properly connected.
- Player not recognized by computer**
 - Check the connection between the player and PC, and confirm the Mini USB cable is properly connected.
 - Check that the **ON/OFF** switch is in the **ON** position.
- No sound from the headphones**
 - Please ensure the volume is turned up and the headphones are properly connected.
 - Check if the format of music file is supported by the player.
- The buttons do not work**
 - Slide the **ON/OFF** switch to the **ON** position.

Legal Information

FCC Part 15:
This device complies with Part 15 of the FCC Rules. Operation is subject to the following two conditions:
(1) this device may not cause harmful interference, and
(2) this device must accept any interference received, including interference that may cause undesired operation.

Warning: Changes or modifications to this equipment not expressly approved by the party responsible for compliance could void the user's authority to operate the equipment.

NOTE: This equipment has been tested and found to comply with the requirements for a Class B digital device under Part 15 of the Federal Communications Commission (FCC) rules. These requirements are intended to provide reasonable protection against harmful interference in a residential installation. This equipment generates, uses and can radiate radio frequency energy and, if not installed and used in accordance with the instructions, may cause harmful interference to radio communications.

However, there is no guarantee that interference will not occur in a particular installation. If this equipment does cause harmful interference to radio or television reception, which can be determined by turning the equipment off and on, the user is encouraged to try to correct the interference by one or more of the following measures:

- Reorient or relocate the receiving antenna.
- Increase the separation between the equipment and receiver.
- Connect the equipment into an outlet on a circuit different from that to which the receiver is connected.
- Consult the dealer or an experienced radio/TV technician for help.

Do not attempt to repair or modify this equipment.

Shielded USB cables must be used with this unit to ensure compliance with the Class B FCC limits.

PLR IP Holdings, LLC, its licensees and affiliates, fully support all electronic waste initiatives. As responsible stewards of the environment, and to avoid violating established laws, you should properly dispose of this product in compliance with all applicable regulations, directives or other governments in the area where you reside. Please check with local authorities or the retailer where you purchased this product to determine a location where you can appropriately dispose of the product.

You may also go to HYPERLINK "http://www.polaroid.com" www.polaroid.com and reference About / Electronic Recycling to learn more about the specific laws in your area and to locate a collection facility near your home.

If your electronic device has internal memory on which personal or other confidential data may be stored, you may want to perform a data sanitization process before you dispose of your device to assure another party cannot access your personal data. Data sanitization varies by the type of product and its software, and you may want to research the best sanitization process for your device before disposal. You may also check with your local recycling facility to determine their data sanitization procedures during the recycling process.

Limited Warranty

In the unlikely event that this product is defective, or does not perform properly, you may within ninety (90) days from your original date of purchase return it to the authorized service center for repair or exchange.

TO OBTAIN WARRANTY SERVICE:

- Provide proof of the date of purchase within the package (Dated bill of sale).
- Prepay all shipping costs to the authorized service center, and remember to insure your return.
- Include a return shipping address (no P.O. Boxes), a telephone contact number, and the defective unit within the package.
- Describe the defect or reason you are returning the product.

Your product will be repaired or replaced, at our option, for the same or similar model of equal value if examination by the service center determines this product is defective. Products received damaged as a result of shipping will require you to file a claim with the carrier.

The shipping address of the authorized service center is:

Southern Telecom, Inc.
Attention: Customer Service (2nd Floor)
14-C 53rd Street
Brooklyn, NY 11232

Should you have any questions or problems concerning this product, please contact our customer service department at:

Customer Support:
1-877-768-8483 (Toll Free)
cs@southerntelecom.com
Monday-Friday: 8AM-10PM (EST)
www.southerntelecom.com

Warranty service not provided
This warranty does not cover damage resulting from accident, misuse, abuse, improper installation or operation, lack of reasonable care, and unauthorized modification. This warranty is voided in the event any unauthorized person opens, alters or repairs this product. All products being returned to the authorized service center for repair must be suitably packaged.

Limitation of Warranty:

- THE WARRANTY STATED ABOVE IS THE ONLY WARRANTY APPLICABLE TO THIS PRODUCT. ALL OTHER WARRANTIES, EXPRESS OR IMPLIED (INCLUDING ALL IMPLIED WARRANTIES OF MERCHANTABILITY OR FITNESS FOR A PARTICULAR PURPOSE) ARE HEREBY DISCLAIMED. NO VERBAL OR WRITTEN INFORMATION GIVEN BY AIT, INC.'S AGENTS, OR EMPLOYEES SHALL CREATE A GUARANTY OR IN ANY WAY INCREASE THE SCOPE OF THIS WARRANTY.
- REPAIR OR REPLACEMENT AS PROVIDED UNDER THIS WARRANTY IS THE EXCLUSIVE REMEDY OF THE CONSUMER. AIT, INC. SHALL NOT BE LIABLE FOR INCIDENTAL OR CONSEQUENTIAL DAMAGES RESULTING FROM THE USE OF THIS PRODUCT OR ARISING OUT OF ANY BREACH OF ANY EXPRESS OR IMPLIED WARRANTY ON THIS PRODUCT. THIS DISCLAIMER OF WARRANTIES AND LIMITED WARRANTY ARE GOVERNED BY THE LAWS OF THE STATE OF NEW YORK. EXCEPT TO THE EXTENT PROHIBITED BY APPLICABLE LAW, ANY IMPLIED WARRANTY OF MERCHANTABILITY OR FITNESS FOR A PARTICULAR PURPOSE ON THIS PRODUCT IS LIMITED TO THE APPLICABLE WARRANTY PERIOD SET FORTH ABOVE.

Some states do not allow the exclusion nor limitation of incidental or consequential damages, or limitations on how long an implied warranty lasts so the above limitations or exclusions may not apply to you. This warranty gives you specific legal rights, and you also may have other rights that vary from state to state.

Free Manuals Download Website

<http://myh66.com>

<http://usermanuals.us>

<http://www.somanuals.com>

<http://www.4manuals.cc>

<http://www.manual-lib.com>

<http://www.404manual.com>

<http://www.luxmanual.com>

<http://aubethermostatmanual.com>

Golf course search by state

<http://golfingnear.com>

Email search by domain

<http://emailbydomain.com>

Auto manuals search

<http://auto.somanuals.com>

TV manuals search

<http://tv.somanuals.com>