

KODAK Camera Battery Charger K7700

Battery Compatibility and Charge Time:

Model Number	Hours
KLIC-7000	1
KLIC-7001	1
KLIC-7003	1.4
KLIC-7004	1.25
KLIC-7005	1
KLIC-7006	1

KODAK Li-Ion Rechargeable Digital Camera Batteries are available from dealers of KODAK products, or go to www.kodak.com/go/batteries.

LED Indicator:

Flashing Red—Charger error; operating temperature exceeded.

Solid Red—Battery error; replace battery.

Flashing Green—Charging (flashes at a faster speed when close to fully charged).

Solid Green—Battery ready to use.

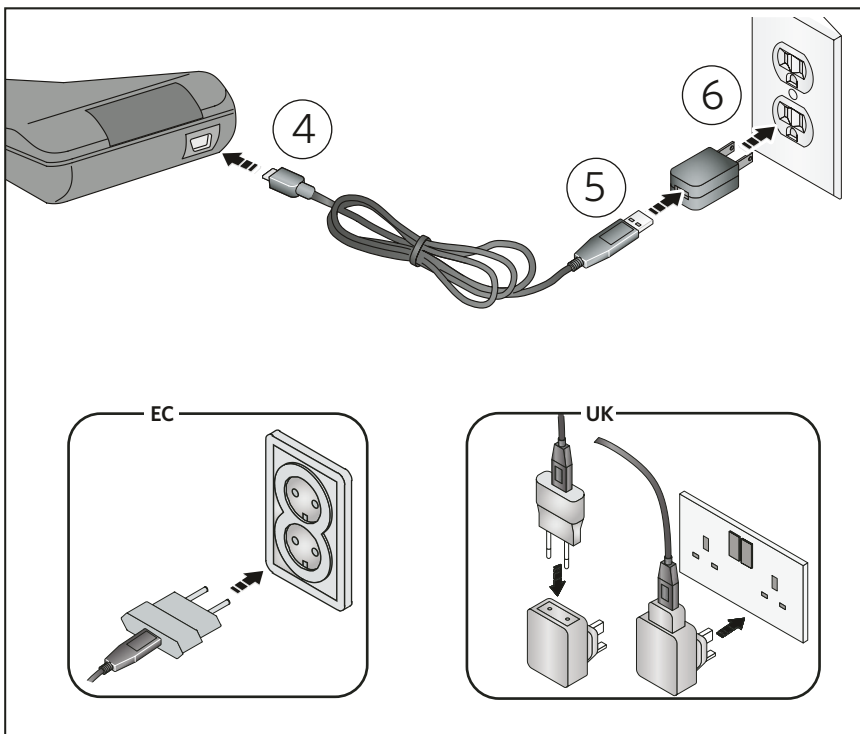
Specifications:

Voltage (input):

KODAK High Performance USB AC Adapter K20-AM: 100V - 240V AC
Charger: 5V DC

Operating Temperature:

32° F - 113° F (0° C - 45° C)



FCC compliance and advisory

This equipment has been tested and found to comply with the limits for a Class B digital device, pursuant to Part 15 of the FCC Rules. These limits are designed to provide reasonable protection against harmful interference in a residential installation.

This equipment generates, uses, and can radiate radio frequency energy and, if not installed or used in accordance with the instructions, may cause harmful interference to radio communications. However, there is no guarantee that interference will not occur in a particular installation.

If this equipment does cause harmful interference to radio or television reception, which can be determined by turning the equipment off and on, the user is encouraged to try to correct the interference by one or more of the following measures: 1) reorient or relocate the receiving antenna; 2) increase the separation between the equipment and the receiver; 3) connect the equipment to an outlet on a circuit different from that to which the receiver is connected; 4) consult the dealer or an experienced radio/TV technician for additional suggestions.

Any changes or modifications not expressly approved by the party responsible for compliance could void the user's authority to operate the equipment. Where shielded interface cables have been provided with the product or specified additional components or accessories elsewhere defined to be used with the installation of the product, they must be used in order to ensure compliance with FCC regulation.

The KODAK Adapter K20-AM complies with Part 15 of the FCC Rules. Operation is subject to the following two conditions: 1) This device may not cause harmful interference, and 2) this device must accept any interference received, including interference that may cause undesired operation.

Canadian DOC statement

DOC Class B compliance—This Class B digital apparatus complies with Canadian ICES-003.

Observation des normes-Class B—Cet appareil numérique de la classe B est conforme à la norme NMB-003 du Canada.



Waste Electrical and Electronic Equipment/Battery Disposal

In Europe: For human/environmental protection, it is your responsibility to dispose of this equipment and batteries at a collection facility established for this purpose (separate from municipal waste). For more information, contact your retailer, collection facility, or appropriate local authorities; or visit www.kodak.com/go/recycle. (Product weight: 81g.)

Go to www.kodak.com/go/REACH for information about the presence of substances included on the candidate list according to article 59(1) of Regulation (EC) No. 1907/2006 (REACH).

Kodak

Made in China for
Eastman Kodak Company
Rochester, NY 14650 U.S.A.

©Eastman Kodak Company, 2009.
MC/MR/TM: Kodak.

www.kodak.com/go/accessories

Free Manuals Download Website

<http://myh66.com>

<http://usermanuals.us>

<http://www.somanuals.com>

<http://www.4manuals.cc>

<http://www.manual-lib.com>

<http://www.404manual.com>

<http://www.luxmanual.com>

<http://aubethermostatmanual.com>

Golf course search by state

<http://golfingnear.com>

Email search by domain

<http://emailbydomain.com>

Auto manuals search

<http://auto.somanuals.com>

TV manuals search

<http://tv.somanuals.com>