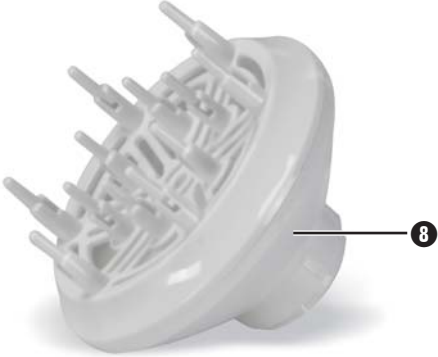


■ IONIC HAIRDRYER



GB
IE
CY

Ionic Hairdryer
Operating instructions



Content	Page
Safety information	2
Intended use	3
Items supplied	3
Appliance description	3
Operation	3
Heat and blower levels.....	3
Cool-Shot.....	3
Ionic Function.....	3
Drying and styling hair	4
Cleaning	4
Troubleshooting	4
Disposal	4
Technical data	5
Warranty and Service	5
Importer	5

Read these operating instructions carefully before using the appliance for the first time and preserve this manual for later reference. Pass this manual on to whoever might acquire the appliance at a future date.

Ionic Hairdryer

KH 2114

Safety information

Risk of electrocution!

- Connect the hair dryer only to a correctly installed wall power socket providing electrical energy at the level detailed on the rating plate.
- Under no circumstances may the Professional Hair Dryer be submerged in fluids, or fluids be permitted to enter the housing of the Professional Hair Dryer. Do not expose the appliance to humidity and do not use it outdoors. Should liquids enter the housing, unplug the appliance from the power socket immediately and arrange for it to be repaired by a qualified technician.



Never use the appliance near water, particularly not near sinks, baths or other vessels. The proximity of moisture presents a risk, even when the appliance is switched off. After use, always remove the plug from the power socket. As additional protection, the installation of a faulty-current protection unit with an activation power rating of not more than 30 mA is recommended for the power circuit in the bathroom. Ask your electrician for advice.

- Remove the plug of the Professional Hair Dryer from the power socket in the event of functional irregularity and before cleaning the appliance.
- To disconnect, pull only on the plug itself, not on the cable.
- Do not wrap the power cable around the Professional Hair Dryer and protect it from damage.
- To avoid the risk of personal injury, arrange for damaged power cables to be exchanged by specialists before continuing to use the appliance.

- Do not pinch or squeeze the power cable and lay it in such a way that no one can tread on or trip over it.
- Do not use extension cables.
- Never touch or handle the Professional Hair Dryer, the power cable or plug with wet hands.
- Immediately separate the Professional Hair Dryer from the power source after use. The appliance is completely free of electrical power only when you unplug it.
- You are not permitted to open the housing of the Professional Hair Dryer or carry out repairs to it. Should you do so, the safety of the appliance may be compromised and the warranty becomes void. Only permit the Professional Hair Dryer to be serviced and repaired by authorised specialists.

Risk of fire and burns

- This appliance is not intended for use by individuals (including children) with restricted physical, physiological or intellectual abilities or deficiencies in experience and/or knowledge unless they are supervised by a person responsible for their safety or receive from this person instruction in how the appliance is to be used. Children should be supervised to ensure that they do not play with the appliance.
- When it is switched on, never lay the Professional Hair Dryer down or leave it unsupervised.
- Never place the Professional Hair Dryer close to sources of heat and protect the power cable against potential damage.
- Should the Professional Hair Dryer be dropped or otherwise sustain damage, it may no longer be used. Arrange for the appliance to be checked and, if necessary, repaired by qualified technicians.
- Do not cover the ventilation grill when using the appliance. Clean it at regular intervals.
- The Professional Hair Dryer becomes hot during use. Hold it only by the grip when it is hot.

Intended use

The Professional Hair Dryer is intended only for the drying and shaping of human hair, under no circumstances is it to be used for wigs and hairpieces made of synthetic material. You may use it exclusively in domestic households. Pay heed to all of the information in this operating manual, especially the safety instructions. This appliance is not designed for use in commercial or industrial applications.

Items supplied

- Ionic Hairdryer
- Styling Jet
- Finger Diffusor
- Operating Instructions

Appliance description

- 1 Styling jet
- 2 Air suction grill
- 3 Suspension hook
- 4 Ion switch
- 5 Blower level switch (2 levels)
- 6 Heat level switch (3 levels)
- 7 Cool level switch ("Cool-Shot")
- 8 Finger Diffusor

Operation

Heat and blower levels

- ⇒ Insert the plug into a wall socket.
- ⇒ Switch the Professional Hair Dryer on with the blower level switch **5**.

The Professional Hair Dryer is fitted with two function switches. With these you can separately select the strength of the air flow (Blower switch **5**) and the level of heat (Heat level switch **6**):

Blower levels

- the Professional Hair Dryer is switched off
- I reduced air flow
- II maximum air flow

Heat levels

- I Cold air flow
- II Lower heat level
- III Upper heat level

- ⇒ After use, switch the appliance off by moving the blower switch **5** into the position "○". Then remove the plug from the wall socket.

Cool-Shot

With the cool level switch "Cool-Shot" **7** you can produce a cooler air flow with every combination of blower and heat levels.

Ionic Function

With the Ion switch **4** you can additionally switch in the ionic function with every combination of blower and heat level combinations.

Our hair is naturally positively charged. Through drying our hair with a hair dryer, this positive charge in our hair is additionally intensified: the hairs are electrostatically charged and "fly". The horn platelets on the surface of our hair are thereby forced to repel each other, which causes the hair itself to become rough and appear dull and lackluster. The ionic function generates negatively charged ions. These are brought to the hair by the air flow. Thereby, the positive charge in our hair is neutralised and the electrostatic charge voided. The horn platelets lay themselves back on the hair, the hair itself becoming soft, pliant, gleaming and easier to style.

Drying and styling hair

⇒ To quickly dry hair, we recommend first of all using a high blower and heater setting for a short period. Also place the Ion switch at the position 4 "ON". After drying the hair, switch to a lower blower and heat level to shape the hairstyle.

With the enclosed styling jet 1, which can be turned to all positions, you can studiously use the air flow for styling.

If you wish to dry your hair particularly gently, or for the so-called "air-dried permanent wave", use the finger diffuser 8.

- ⇒ For this, first of all remove the styling jet 1, then replace it with the finger diffuser 8.
- ⇒ Before you comb your hair out allow it to cool, so that the styling retains its form.
- ⇒ For cooling the hair you can use the switch "Cool-Shot" 7 or level I of the heat level switch 6.

Attention!

First pack and transport the Professional Hair Dryer when it has completely cooled down. Otherwise, it could damage other items.

Cleaning

Risk of electric shock

Before cleaning the Professional Hair Dryer, always remove the plug from the mains wall socket.

Cleaning the housing

⇒ To clean the housing, use a soft cloth moistened with a mild soapy solution.

Cleaning the air suction grill

Risk of Fire!

Clean the air suction grill 2 at regular intervals with a soft brush.

- ⇒ Turn the air suction grill 2 anti-clockwise so that it can be removed.
- ⇒ Clean the openings of the air suction grill 2 with a soft brush.
- ⇒ Replace the air suction grill 2 on the hair dryer so that the lugs grip into the recesses. Turn the air suction grill 2 clockwise until it engages and sits firmly.

Risk of an electrical shock!

Before using the Professional Hair Dryer again after cleaning, it must be completely dry.

Troubleshooting

Should your Professional Hair Dryer not function as expected, first remove the plug from the wall socket and allow the appliance to cool down for a few minutes. The appliance is fitted with an overheating protector! Should the appliance still not function, consult the service department detailed on the Warranty Card.

Disposal



Do not dispose of the appliance in your normal domestic waste. This product is subject to the provisions of European Directive 2002/96/EC.

Dispose of the appliance through an approved disposal centre or at your community waste facility. Observe the currently applicable regulations. In case of doubt, please contact your waste disposal centre.



Dispose of all packaging materials in an environmentally friendly manner.

Technical data

Mains voltage: 220-240 V~ 50 Hz

Nominal power: 2000 W

Protection class: II / 

Importer

KOMPERNASS GMBH

BURGSTRASSE 21

D-44867 BOCHUM

www.kompernass.com

Warranty and Service

The warranty for this appliance is for 3 years from the date of purchase. The appliance has been manufactured with care and meticulously examined before delivery. Please retain your receipt as proof of purchase. In the event of a warranty claim, please make contact by telephone with our Service Department. Only in this way can a post-free despatch for your goods be assured.

The warranty covers only claims for material and manufacturing defects, but not for transport damage, for wearing parts or for damage to fragile components, e.g. buttons or batteries. This product is for private use only and is not intended for commercial use. The warranty is void in the case of abusive and improper handling, use of force and internal tampering not carried out by our authorized service branch. Your statutory rights are not restricted in any way by this warranty.

The warranty period will not be extended by repairs made under warranty. This applies also to replaced and repaired parts. Any damage and defects extant on purchase must be reported immediately after unpacking the appliance, at the latest, two days after the purchase date. Repairs made after the expiration of the warranty period are subject to payment.

DES UK LTD

Tel.: 0871 5000 700 (£ 0,10 / minute)

e-mail: support.uk@kompernass.com

Kompernass Service Ireland

Tel: 1850 930 412 (0,082 EUR/Min.)

Standard call rates apply. Mobile operators may vary.

e-mail: support.ie@kompernass.com

Free Manuals Download Website

<http://myh66.com>

<http://usermanuals.us>

<http://www.somanuals.com>

<http://www.4manuals.cc>

<http://www.manual-lib.com>

<http://www.404manual.com>

<http://www.luxmanual.com>

<http://aubethermostatmanual.com>

Golf course search by state

<http://golfingnear.com>

Email search by domain

<http://emailbydomain.com>

Auto manuals search

<http://auto.somanuals.com>

TV manuals search

<http://tv.somanuals.com>