

Kramer Electronics, Ltd.



USER MANUAL

Model:

VP-4x8AK

4x8 VGA / UXGA / Audio Matrix Switcher

Contents

1	Introduction	1
2	Getting Started	1
2.1	Quick Start	1
3	Overview	3
3.1	Terminology Used in this User Manual	4
3.2	DDC Support	5
3.3	Defining EDID	5
4	Your VP-4x8AK 4x8 VGA / UXGA / Audio Matrix Switcher	5
4.1	Using the IR Transmitter	9
5	Installing the VP-4x8AK in a Rack	10
6	Using the VP-4x8AK	11
6.1	Connecting the VP-4x8AK Rear Panel	11
6.2	Connecting the Balanced/Unbalanced Stereo Audio Output	13
6.3	Connecting a PC or Controller to the RS-232 Port	13
6.4	Connecting a PC or Controller to the RS 485 Port	14
6.5	Configuring the Ethernet Port	14
6.5.1	Connecting via the Ethernet	14
6.5.2	Ethernet Port Configuration	16
6.6	Control via the Ethernet Port	18
6.7	Setting the Switching Delay Time	18
6.8	Setting the Machine Number	19
6.9	Cascading Machines	19
7	Operating the VP-4x8AK	20
7.1	Switching an Input to an Output	21
7.2	Understanding the 7-Segment Displays	21
7.2.1	The STATUS 7-Segment Display	21
7.2.2	The REL AUDIO LEVEL 7-Segment Display	22
7.3	Confirming Settings	22
7.3.1	Toggling between the At Once and Confirm Modes	23
7.3.2	Confirming a Switching Action	23
7.4	Storing/Recalling Input/Output Configurations	23
7.4.1	Storing an Input/Output Configuration	24
7.4.2	Recalling an Input/Output Configuration	24
7.5	Locking the Front Panel	24
7.6	Choosing the Audio-Follow-Video or Breakaway Option	25
7.6.1	Setting the Audio-Follow-Video Option	25
7.6.2	Setting the Breakaway Option	25
7.7	The Audio Input/Output Gain Control	25
8	Flash Memory Upgrade	26



9	Controlling via the Embedded Web Pages	27
9.1	Connecting to the VP-4x8AK via your Browser	27
9.2	The VP-4x8AK Switching Matrix Page	29
9.2.1	Switch an Input to an Output via the Embedded Web Pages	30
9.2.2	Operate in the Confirm Mode	30
9.2.3	Store and Recall Setups	31
9.3	Audio Gain Page	34
9.4	The Configurations Page	35
10	Technical Specifications	36
11	Communication Parameters	37
12	Table of ASCII Codes for Serial Communication (Protocol 3000)	37
13	Table of Hex Codes for Serial Communication (Protocol 2000)	38
14	Kramer Protocol	41
14.1	Switching Protocols	41
14.1.1	Switching Protocols via the Front Panel Buttons	41
14.1.2	Switching Protocols via Protocol Commands	41
14.2	Kramer Protocol 3000	41
14.2.1	Protocol 3000 Syntax	42
14.2.2	Command Parts Details	42
14.3	Kramer Protocol 2000	48

Figures

Figure 1: VP-4x8AK 4x8 VGA / UXGA / Audio Matrix Switcher – Front View	6
Figure 2: VP-4x8AK 4x8 VGA / UXGA / Audio Matrix Switcher – Rear View	8
Figure 3: Connecting the VP-4x8AK 4x8 VGA / UXGA / Audio Matrix Switcher	12
Figure 4: Connecting the Balanced Stereo Audio Output	13
Figure 5: Connecting an Unbalanced Output	13
Figure 6: Local Area Connection Properties Window	15
Figure 7: Internet Protocol (TCP/IP) Properties Window	16
Figure 8: Connect Screen	17
Figure 9: Device Properties Screen	18
Figure 10: Control Configuration via RS-232 and RS-485	20
Figure 11: 7-segment display During Normal Operation	21
Figure 12: 7-segment Display after Turning the Switcher ON	22
Figure 13: REL AUDIO LEVEL 7-segment Display	22
Figure 14: Storing and Recalling using the Input/Output Buttons	23
Figure 15: Java Test Page Success Message	27
Figure 16: Entering the IP Number in the Address Bar	27
Figure 17: Loading the Embedded Web Pages	28
Figure 18: First Time Security Warning	28
Figure 19: VP-4x8AK Embedded Web Page	29
Figure 20: Switching an Input to an Output	30
Figure 21: Switching an Input to an Output	31
Figure 22: Exiting Offline Warning	31

Figure 23: Selecting a Preset	32
Figure 24: Save Preset Message	32
Figure 25: Load Preset Message	32
Figure 26: Recalling a Preset in the Confirm Mode	33
Figure 27: Audio Gain Page	34
Figure 28: CONFIGURATIONS Embedded Web Page	35

Tables

Table 1: Terminology Used in this User Manual	4
Table 2: Front Panel VP-4x8AK 4x8 VGA / UXGA / Audio Matrix Switcher Features	7
Table 3: Rear Panel VP-4x8AK 4x8 VGA / UXGA / Audio Matrix Switcher Features	9
Table 4: Technical Specifications of the VP-4x8AK 4x8 Video Audio Matrix Switcher	36
Table 5: Communication Parameters	37
Table 6: VP-4x8AK Video Signal Codes for Protocol 3000	37
Table 7: VP-4x8AK Audio Signal Codes for Protocol 3000	38
Table 8: VP-4x8AK Audio Input Gain Codes	38
Table 9: VP-4x8AK Audio Output Gain Codes	38
Table 10: VP-4x8AK Hex Codes for Switching via RS-232/RS-485	39
Table 11: VP-4x8AK Hex Codes for Switching Audio Channels via RS-232/RS-485	39
Table 12: VP-4x8AK Hex Codes for Increasing/Decreasing the Audio Input Gain	39
Table 13: VP-4x8AK Hex Codes for Setting the Audio Input Gain	39
Table 14: VP-4x8AK Hex Codes for Increasing/Decreasing the Output Gain	39
Table 15: VP-4x8AK Hex Codes for Setting the Audio Output Gain	40
Table 16: Instruction Codes for Protocol 3000	43
Table 17: Protocol Definitions	48
Table 18: Instruction Codes for Protocol 2000	49

1 Introduction

Welcome to Kramer Electronics! Since 1981, Kramer Electronics has been providing a world of unique, creative, and affordable solutions to the vast range of problems that confront the video, audio, presentation, and broadcasting professional on a daily basis. In recent years, we have redesigned and upgraded most of our line, making the best even better! Our 1,000-plus different models now appear in 11 groups¹ that are clearly defined by function.

Congratulations on purchasing your **VP-4x8AK 4x8 VGA / UXGA / Audio Matrix Switcher**, which is ideal for the following typical applications:

- Professional display systems requiring a true 4x8 computer graphics and audio matrix operation
- Multimedia and presentation source, and acceptor selection

The package includes the following items:

- **VP-4x8AK 4x8 VGA / UXGA Matrix Switcher**
- Windows®-based Kramer control software²
- Kramer **RC-IR3** Infrared Remote Control Transmitter (including the required battery and a separate user manual⁴)
- Power cord³, rack “ears” and this user manual⁴

2 Getting Started

We recommend that you:

- Unpack the equipment carefully and save the original box and packaging materials for possible future shipment
- Review the contents of this user manual
- Use Kramer high performance high-resolution cables⁵

2.1 Quick Start

This quick start chart summarizes the basic setup and operation steps.

1 GROUP 1: Distribution Amplifiers; GROUP 2: Switchers and Matrix Switchers; GROUP 3: Control Systems; GROUP 4: Format/Standards Converters; GROUP 5: Range Extenders and Repeaters; GROUP 6: Specialty AV Products; GROUP 7: Scan Converters and Sealers; GROUP 8: Cables and Connectors; GROUP 9: Room Connectivity; GROUP 10: Accessories and Rack Adapters; GROUP 11: Sierra Products

2 Downloadable from our Web site at <http://www.kramerelectronics.com>

3 We recommend that you use only the power cord that is supplied with this machine

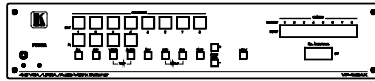
4 Download up-to-date Kramer user manuals from our Web site at <http://www.kramerelectronics.com>

5 The complete list of Kramer cables is on our Web site at <http://www.kramerelectronics.com>



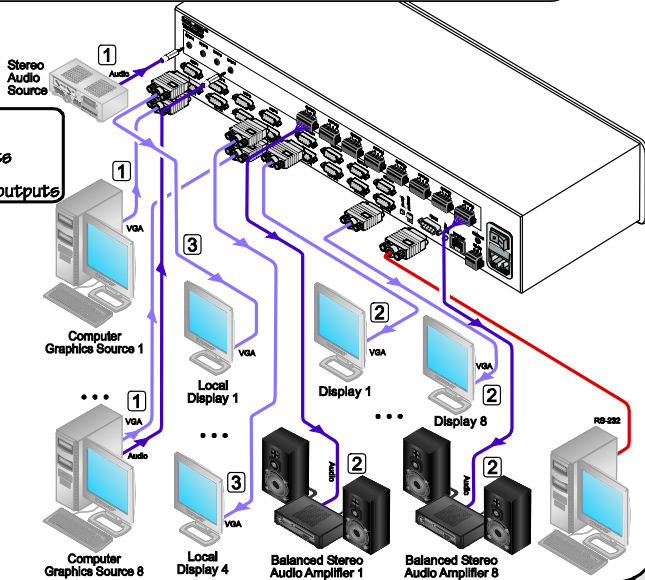
Step 1: Mount the machine - see section 5

Mount the machine in a rack or stick the 4 rubber feet to the underside



Step 2: Connect the inputs and outputs - see section 6

- 1 Connect the Inputs
- 2 Connect the outputs
- 3 Connect the LOOP outputs



Step 3: Turn the power ON

Step 4: Operate the machine - see section 7

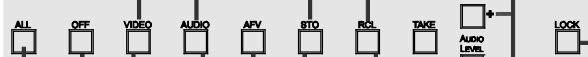
Use the SELECTOR buttons to switch the Inputs to the outputs

Press VIDEO and AUDIO to set the DELAY time

Press STO and RCL to set the MACH #

Increase or decrease the AUDIO LEVEL

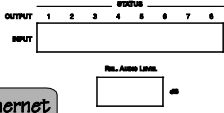
LOCK the front panel



Connect a selected input to ALL the outputs; disconnect an output (OFF) from an input

AFV - Audio follows video when switching
 VIDEO - Switching relates to the video signal
 AUDIO - Switching relates to the audio signal

Read the STATUS and the REL AUDIO LEVEL on the 7-segment displays



Operate via the front panel buttons, RS-232, RS-485 and the Ethernet

3 Overview

The **VP-4x8AK** is a high performance 4x8 computer graphics video matrix switcher for high-resolution video and stereo audio signals. The **VP-4x8AK** is HDTV compatible and lets you simultaneously route any or all of the four inputs to any or all of the eight outputs and to loop each input to an additional output.

In particular, the **VP-4x8AK** *4x8 VGA / UXGA / Audio Matrix Switcher* features:

- Kramer's innovative integrated sync processing; Kr-isp® technology that lets you achieve a sharp, stable image when the sync level is too low, by restoring the sync signal waveform
- A video bandwidth of over 360MHz that ensures transparent performance even in the most critical applications
- 12 preset memory locations for quick access to common video and audio configurations and audio gain status for each output
- Automatic detection of the connected input signals (the respective button illuminates)
- A delayed switching mode (ranging from 0 to 3.5sec¹) for clean transitions when switching between non-genlocked sources
- DC-coupled video inputs and outputs
- Audio-follow-video and breakaway options
- Four stereo unbalanced stereo audio input signals on 3.5mm mini plugs
- Eight balanced stereo audio output signals on 5-pin terminal block connectors
- Audio level control buttons for adjusting the signal level of each input and each output
- Measurement and indication of the audio level for each input and output, in relative dB
- A TAKE button, which allows you to place multiple switches in a queue and then activate them simultaneously with one touch of this button
- A LOCK button to prevent tampering with the front panel
- Supports DDC (Display Data Channel²) communication between input 1 and output 1 high-density 15-pin HD connectors on pins 12 and 15
- Control via embedded Web pages

¹ In increments of 0.5sec

² See [Section 3.2](#)

Control the **VP-4x8AK** using the front panel buttons, or remotely via:

- RS-485 or RS-232 serial commands (using Kramer 2000 and 3000 protocols) transmitted by a touch screen system, PC, or other serial controller
- The Kramer infrared remote control transmitter or infrared remote extension cable transmitter (optional)
- The ETHERNET

The **VP-4x8AK** is dependable, rugged, and fits into two vertical spaces (2U) of a standard 19" professional rack.

To achieve the best performance:

- Use only good quality connection cables¹ to avoid interference, deterioration in signal quality due to poor matching, and elevated noise levels (often associated with low quality cables).
- Avoid interference from neighboring electrical appliances that may adversely influence signal quality and position your Kramer **VP-4x8AK** away from moisture, excessive sunlight and dust

3.1 Terminology Used in this User Manual

[Table 1](#) defines some terms that are used in this user manual:

Table 1: Terminology Used in this User Manual

Term	Definition
802.3	The standard specification for ETHERNET that is maintained by the Institute of Electrical and Electronics Engineers (IEEE).
Dynamic Host Configuration Protocol (DHCP)	Allows the network administrator to distribute IP addresses from a central point and automatically send a new IP address when an Ethernet point is plugged into a different network location.
Gateway	A network position serving as an entry to another network. On the Internet, a node or stopping point can be either a gateway node or a host (end-point) node.
IP Address	A 32-binary digit number that identifies each sender or receiver (within a network via a particular server or workstation) of data (HTML pages or e-mails) that is sent in packets across the Internet. Every device connected to an IP network must have a unique IP address. This address is used to reference the specific unit.
Local Area Network (LAN)	Computers sharing a common communications line or wireless link, which often share a server within a defined geographic area.
Media Access Control (MAC) Address	A computer's unique hardware number (or address) in a LAN or other network. On an Ethernet LAN, the (MAC) address is identical to the Ethernet address.
Transmission Control Protocol/Internet Protocol (TCP/IP)	The basic communication language or protocol of the Internet that breaks the message into appropriately sized packets for the network, and can be used as a communications protocol in an intranet or an extranet.

¹ Available from Kramer Electronics on our Web site at <http://www.kramerelectronics.com>

3.2 DDC Support

When establishing a VGA connection between a PC or laptop and a display device, a set of parameters known as EDID is exchanged between them, which is carried over the DDC channel. In some PC graphic cards and laptops, this information exchange is essential for proper VGA OUT operation.

3.3 Defining EDID

The Extended Display Identification Data (EDID¹) is a data-structure, provided by a display, to describe its capabilities to a graphics card (that is connected to the display's source). The EDID enables the PC or laptop to "know" what kind of monitor is connected to the output. The EDID includes the manufacturer's name, the product type, the timing data supported by the display, the display size, luminance data and (for digital displays only) the pixel mapping data.

4 Your VP-4x8AK 4x8 VGA / UXGA / Audio Matrix Switcher

[Figure 1](#), [Figure 2](#), [Table 2](#), and [Table 3](#) define the **VP-4x8AK 4x8 VGA / UXGA / Audio Matrix Switcher**.

¹ Defined by a standard published by the Video Electronics Standards Association (VESA)

Your VP-4x8AK 4x8 VGA / UXGA / Audio Matrix Switcher

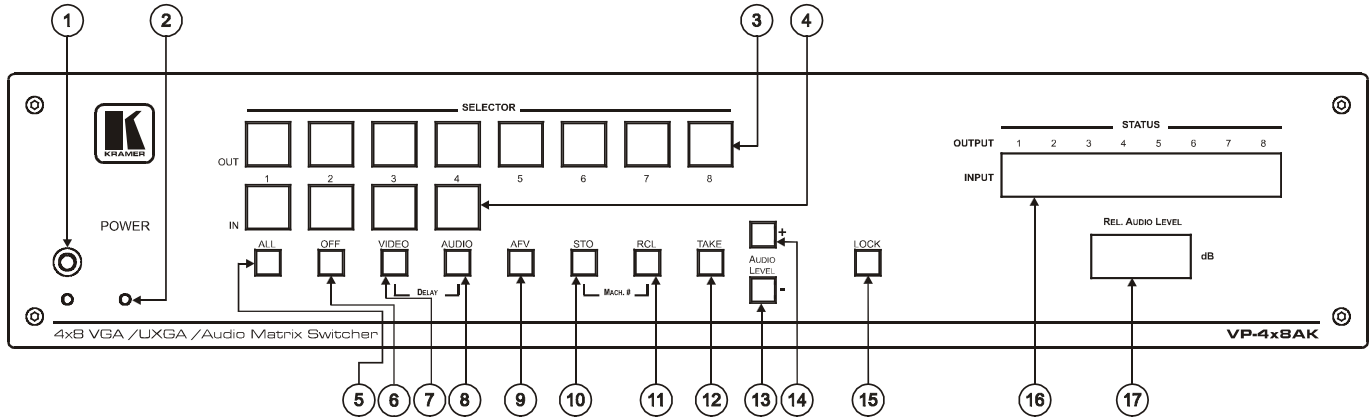


Figure 1: VP-4x8AK 4x8 VGA / UXGA / Audio Matrix Switcher – Front View

Table 2: Front Panel VP-4x8AK 4x8 VGA / UXGA / Audio Matrix Switcher Features

#	Feature	Function
1	IR Receiver	The yellow LED is illuminated when receiving signals from the infrared remote control transmitter
2	POWER LED	The green LED is illuminated when the unit is turned ON
3	SELECTOR OUT Buttons	Select the output ¹ to which the input is switched
4	SELECTOR IN Buttons	Select the input (from 1 to 4) to switch to the output (after selecting an output). When a signal is detected at an input connector, the corresponding input button is illuminated
5	ALL Button	Pressing ALL followed by an INPUT button, connects that input to all outputs ²
6	OFF Button	Press an OUT SELECTOR button and then an OFF button to disconnect that output from the inputs. Press the ALL button and then the OFF button to disconnect all the outputs
7	VIDEO Button	When pressed ³ actions relate to video. Press the VIDEO button together with the AUDIO button to set the Switching delay time (see Section 6.7)
8	AUDIO Button	When pressed ⁴ actions relate to audio. Press the VIDEO button together with the AUDIO button to set the Switching delay time (see Section 6.7)
9	AFV Button	When pressed, the audio channels follow the video channels. The button is illuminated when the AFV mode is selected
10	STO (Store) Button	Pressing STO followed by an input/output button stores the current setting ⁵ Press the RCL button together with the STO button to set the machine number (see Section 6.8)
11	RCL (Recall) Button	Pressing the RCL button and the corresponding IN/OUT button recalls a setup from the non-volatile memory. Press the RCL button again to implement the new status Press the RCL button together with the STO button to set the machine number (see Section 6.8)
12	TAKE Button	Pressing TAKE toggles the mode between the Confirm mode ⁶ and the At Once mode (user confirmation per action is unnecessary). When in Confirm mode, pressing the TAKE button will implement a pending configuration
13	AUDIO LEVEL - Button	Press to decrease the input or output audio signal level
14	AUDIO LEVEL + Button	Press to increase the input or output audio signal level
15	LOCK Button	Disengages the front panel switches
16	STATUS 7-segment display	Displays the selected INPUT switched to the OUTPUT (marked above each input) ⁷
17	REL. AUDIO LEVEL 7-segment display	Displays ⁸ the relative audio level ⁹

1 From 1 to 8

2 For example, press ALL and then Input button # 2 to connect input # 2 to all the outputs

3 The VIDEO button is illuminated when in breakaway mode and actions relate to video

4 The AUDIO button is illuminated when in breakaway mode and actions relate to audio

5 For example, press STO and then the output button # 3 to store in Setup # 3, or the input button 4 to store in Setup 12

6 When in the Confirm mode, the TAKE button illuminates

7 Also displays the number of INPUT and OUTPUT ports, the firmware version number, and the MACHINE #. Refer to [Section 7.2.1](#)

8 A dot following the number, represents a value of 0.5. For example, 3.5 displays as "3."

9 The input audio level ranges from -100dB to +20dB and the output audio level ranges from -100dB to +7.5dB

Your VP-4x8AK 4x8 VGA / UXGA / Audio Matrix Switcher

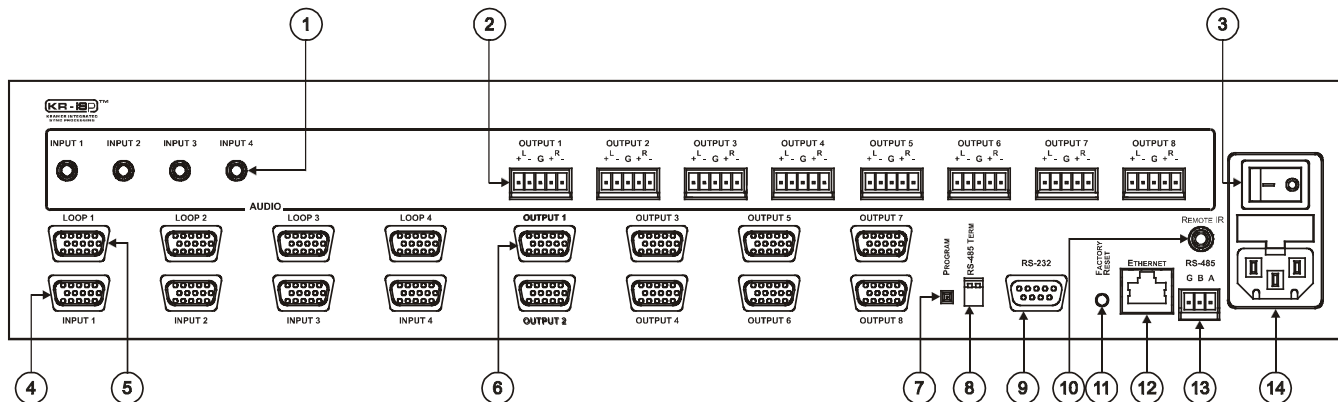


Figure 2: VP-4x8AK 4x8 VGA / UXGA / Audio Matrix Switcher – Rear View

Table 3: Rear Panel VP-4x8AK 4x8 VGA / UXGA / Audio Matrix Switcher Features

#	Feature	Function
1	AUDIO INPUT 3.5mm Mini Connectors	Connect to the unbalanced stereo audio acceptors (from 1 to 4)
2	AUDIO OUTPUT Terminal Block Connectors	Connect to balanced stereo audio sources (from 1 to 8)
3	Power Switch	Switch for turning the unit ON or OFF
4	INPUT XGA 15-pin HD Connectors	Connect to the video sources (from 1 to 4)
5	LOOP XGA 15-pin HD Connectors	Connect looped input to output acceptor (1 to 4)
6	OUTPUT XGA 15-pin HD Connectors	Connect to the output acceptors (from 1 to 8)
7	PROG Button	Push in for "Program" to upgrade to the latest Kramer firmware via RS-232 (see Section 8), or release for "Normal" (the factory default)
8	RS-485 TERM DIP-switch	Use for RS-485 Termination ¹ : ON for RS-485 Line Termination with 120Ω; OFF for no RS-485 Line Termination
9	RS-232 9-pin D-sub Port	Connects to the PC or the remote controller
10	REMOTE IR Opening ²	Connects to an external IR receiver unit for controlling the machine via an IR remote controller instead of using the front panel IR receiver ³
11	FACTORY RESET Button	Press to reset to factory default definitions ⁴ :
		IP Address: 192.168.1.39
		Mask: 255.255.255.0
		Gateway: 192.168.1.1
12	ETHERNET Connector	Connects to the PC or other serial controller through computer networking
13	RS-485 Terminal Block Port	Pins B (-) and A (+) are for RS-485; Pin G (Ground) may be connected to the shield of the cable if desired
14	Power Connector with Fuse	AC connector enabling power supply to the unit

4.1 Using the IR Transmitter

You can use the **RC-IR3** IR transmitter to control the machine via the built-in IR receiver on the front panel or, instead, via an optional external IR receiver⁵. The external IR receiver can be located up to 15 meters away from the machine. This distance can be extended to up to 60 meters when used with three extension cables⁶

Before using the external IR receiver, be sure to arrange for your Kramer dealer to insert the internal IR connection cable⁷ with the 3.5mm connector that fits into the REMOTE IR opening on the rear panel. Connect the external IR receiver to the REMOTE IR 3.5mm connector.

1 The first and the last units on the RS-485 line should be terminated (ON). Other units should be unterminated (OFF)

2 Covered by a cap. The 3.5mm connector at the end of the internal IR connection cable fits through this opening

3 Optional. Can be used instead of the front panel (built-in) IR receiver to remotely control the machine (only if the internal IR connection cable has been installed)

4 Turn the machine OFF using the power switch and then turn it ON while pressing the ETH Factory Reset button. The unit will power up and load its memory with the factory default definitions

5 Model: C-A35M/IRR-50

6 Model: C-A35M/A35F-50

7 P/N: 505-70434010-S



5 Installing the VP-4x8AK in a Rack

This section describes what to do before installing in a rack and how to rack mount.

Before Installing in a Rack

Before installing in a rack, be sure that the environment is within the recommended range:

OPERATING TEMPERATURE:	0° to +55°C (32° to 131°F)
STORAGE TEMPERATURE:	-45° to +72°C (-49° to 162°F)
HUMIDITY:	10% to 90%, RHL non-condensing



CAUTION!

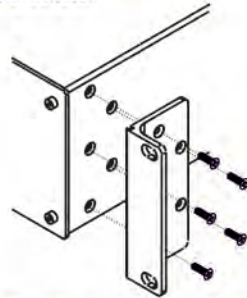
When installing on a 19" rack, avoid hazards by taking care that:

1. It is located within the recommended environmental conditions, as the operating ambient temperature of a closed or multi unit rack assembly may exceed the room ambient temperature.
2. Once rack mounted, enough air will still flow around the machine.
3. The machine is placed straight in the correct horizontal position.
4. You do not overload the circuit(s). When connecting the machine to the supply circuit, overloading the circuits might have a detrimental effect on overcurrent protection and supply wiring. Refer to the appropriate nameplate ratings for information. For example, for fuse replacement, see the value printed on the product label.
5. The machine is earthed (grounded) in a reliable way and is connected only to an electricity socket with grounding. Pay particular attention to situations where electricity is supplied indirectly (when the power cord is not plugged directly into the socket in the wall), for example, when using an extension cable or a power strip, and that you use only the power cord that is supplied with the machine.

How to Rack Mount

To rack-mount a machine:

1. Attach both ear brackets to the machine. To do so, remove the screws from each side of the machine (3 on each side), and replace those screws through the ear brackets.



2. Place the ears of the machine against the rack rails, and insert the proper screws (not provided) through each of the four holes in the rack ears.

Note:

- In some models, the front panel may feature built-in rack ears
- Detachable rack ears can be removed for desktop use
- Always mount the machine in the rack before you attach any cables or connect the machine to the power
- If you are using a Kramer rack adapter kit (for a machine that is not 19"), see the Rack Adapters user manual for installation instructions available from: <http://www.kramerelectronics.com>)

6 Using the VP-4x8AK

This section describes how to:

- Connect the **VP-4x8AK** rear panel (see [Section 6.1](#))
- Connect a balanced stereo audio output (see [Section 6.2](#))
- Connect the **VP-4x8AK** to a controlling device via RS-232 (see [Section 6.3](#)), RS-485 (see [Section 6.4](#)) and/or the ETHERNET (see [Section 6.5](#))
- Set the switching delay time (see [Section 6.7](#))
- Set the machine number (see [Section 6.8](#))
- Connect several **VP-4x8AK** machines (see [Section 6.9](#))

6.1 Connecting the VP-4x8AK Rear Panel

To connect¹ the **VP-4x8AK**, as illustrated in the example in [Figure 3](#), do the following²:

1. Connect up to four VGA/UXGA computer graphics sources to the INPUT 15-pin HD connectors.
2. Connect up to four unbalanced stereo audio sources (for example, the audio source of the computer, or a stereo audio source) to the four INPUT 3.5mm mini connectors.
3. Connect up to four VGA/UXGA output acceptors to the LOOP connectors (local displays or inputs to other cascaded units).
4. Connect the eight OUTPUT 15-pin HD connectors to up to eight VGA/UXGA video acceptors (for example, displays).
5. Connect the eight OUTPUT terminal block connectors to up to eight balanced stereo audio acceptors (for example, balanced stereo audio amplifiers with speakers).
6. If required, you can connect a PC and/or controller to the:
 - RS-232 port (see [Section 6.3](#))
 - RS-485 port (see [Section 6.4](#))
 - ETHERNET (see [Section 6.5](#))
7. Connect the power cord³ (not shown in [Figure 3](#)).

¹ You do not need to connect all inputs and outputs

² Switch OFF the power on each device before connecting it to your VP-4x8AK. After connecting your VP-4x8AK, switch on its power and then switch on the power on each device. DO NOT push in the rear panel Flash Program "PROG" button , it is only used for upgrading to the latest Kramer firmware (see [Section 8](#))

³ We recommend that you use only the power cord that is supplied with this machine

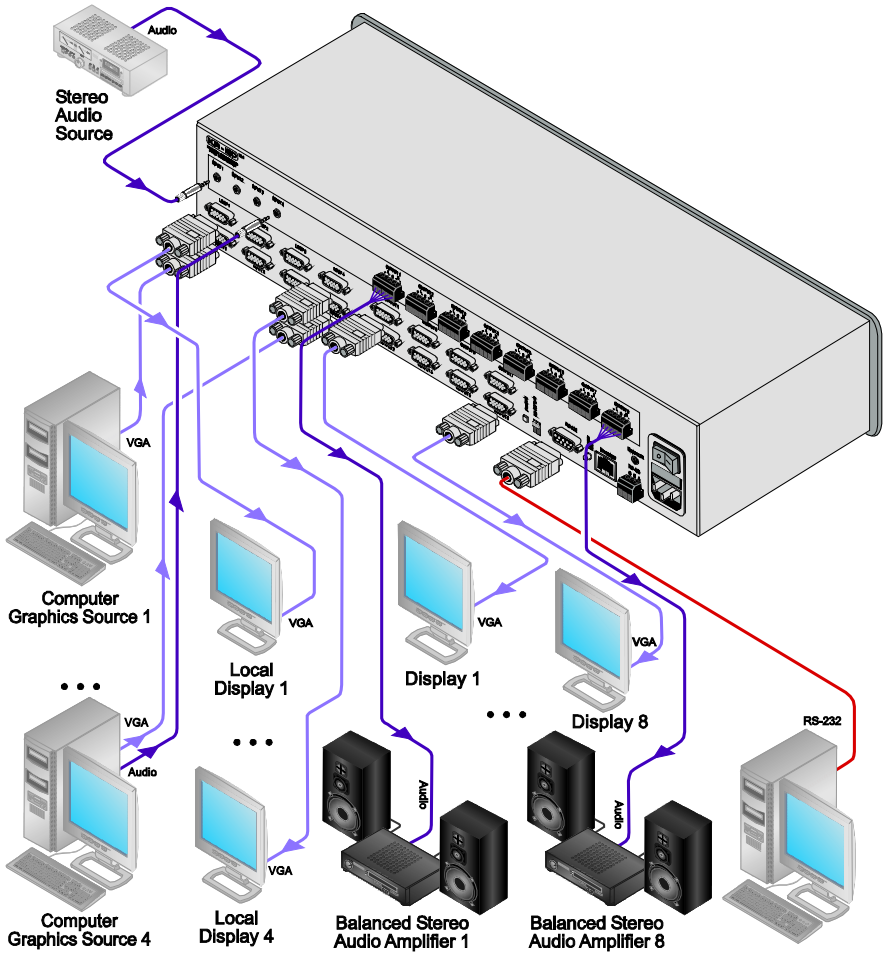


Figure 3: Connecting the VP-4x8AK 4x8 VGA / UXGA / Audio Matrix Switcher

6.2 Connecting the Balanced/Unbalanced Stereo Audio Output

This section illustrates how to wire:

- A balanced output connection, see [Figure 4](#)
- An unbalanced audio output, see [Figure 5](#)

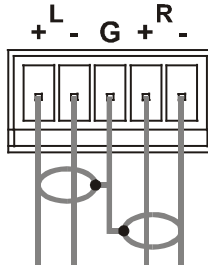


Figure 4: Connecting the Balanced Stereo Audio Output

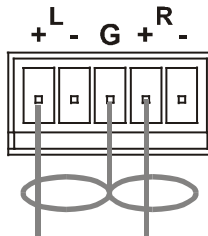


Figure 5: Connecting an Unbalanced Output

6.3 Connecting a PC or Controller to the RS-232 Port

You can connect to the **VP-4x8AK** via an RS-232 connection using, for example, a PC. Note that a null-modem adapter/connection is not required.

To connect to the **VP-4x8AK** via RS-232:

- Connect the RS-232 9-pin D-sub rear panel port on the product unit via a 9-wire straight cable (only pin 2 to pin 2, pin 3 to pin 3, and pin 5 to pin 5 need to be connected) to the RS-232 9-pin D-sub port on your PC

6.4 Connecting a PC or Controller to the RS 485 Port

You can operate the **VP-4x8AK** via the RS-485 port from a distance of up to 1200m (3900ft) using any device equipped with an RS-485 port (for example, a PC). For successful communication, you must set the RS-485 machine number and bus termination.

To connect a device with a RS-485 port to the **VP-4x8AK**:

- Connect the A (+) pin on the RS-485 port of the PC to the A (+) pin on the RS-485 port on the rear panel of the **VP-4x8AK**
- Connect the B (-) pin on the RS-485 port of the PC to the B (-) pin on the RS-485 port on the rear panel of the **VP-4x8AK**
- Connect the G pin on the RS-485 port of the PC to the G pin on the RS-485 port on the rear panel of the **VP-4x8AK**

6.5 Configuring the Ethernet Port

To configure the Ethernet port, you have to connect your PC to the **VP-4x8AK** either via the Ethernet (see [Section 6.5.1](#)) or via a serial port. Once the machine is connected, you can configure the Ethernet port.

6.5.1 Connecting via the Ethernet

You can connect the **VP-4x8AK** via the ETHERNET in the following ways:

- For direct connection to the PC, use a crossover cable (see [Section 6.5.1.1](#))
- For connection via a network hub or network router, use a straight-through cable (see [Section 6.5.1.2](#))

6.5.1.1 Connecting the ETHERNET Port Directly to a PC (Crossover Cable)

You can connect the Ethernet port of the machine to the Ethernet port on your PC, via a crossover cable with RJ-45 connectors.

This type of connection is recommended for identification of the factory default IP Address¹ of the **VP-4x8AK** during the initial configuration

After connecting the Ethernet port, configure your PC as follows:

1. Right-click the My Network Places icon on your desktop.
2. Select **Properties**.
3. Right-click Local Area Connection Properties.

¹ The default IP address is 192.168.1.39

4. Select **Properties**.
The Local Area Connection Properties window appears.
5. Select the Internet Protocol (TCP/IP) and click the **Properties** Button (see [Figure 6](#)).

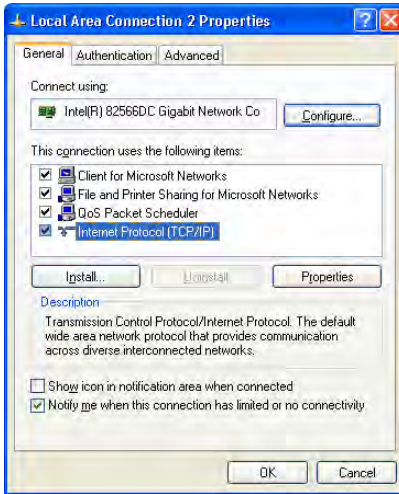


Figure 6: Local Area Connection Properties Window

6. Select Use the following IP Address, and fill in the details as shown in [Figure 7](#).
7. Click **OK**.



Figure 7: Internet Protocol (TCP/IP) Properties Window

6.5.1.2 Connecting the ETHERNET Port via a Network Hub (Straight-Through Cable)

You can connect the Ethernet port of the **VP-4x8AK** to the Ethernet port on a network hub or network router, via a straight-through cable with RJ-45 connectors.

6.5.2 Ethernet Port Configuration

To configure the Ethernet port, download the *Device Properties* Ethernet configuration software. Extract the file to a folder and create a shortcut on your desktop to the file.

Follow these steps to configure the port:

1. Double click the desktop icon.
The Connect screen appears as follows:



Figure 8: Connect Screen

2. Select the method to connect to the Ethernet port of the **VP-4x8AK**.
Select:
 - Ethernet, if you know the IP address number¹ or the machine name. The default name for the machine is KRAMER_XXXX²
 - Serial, if you are connected via a serial port

¹ The default IP address is 192.168.1.39

² The four digits are the last four digits of the machine's serial number.

3. Click OK.
The Device Properties window appears:

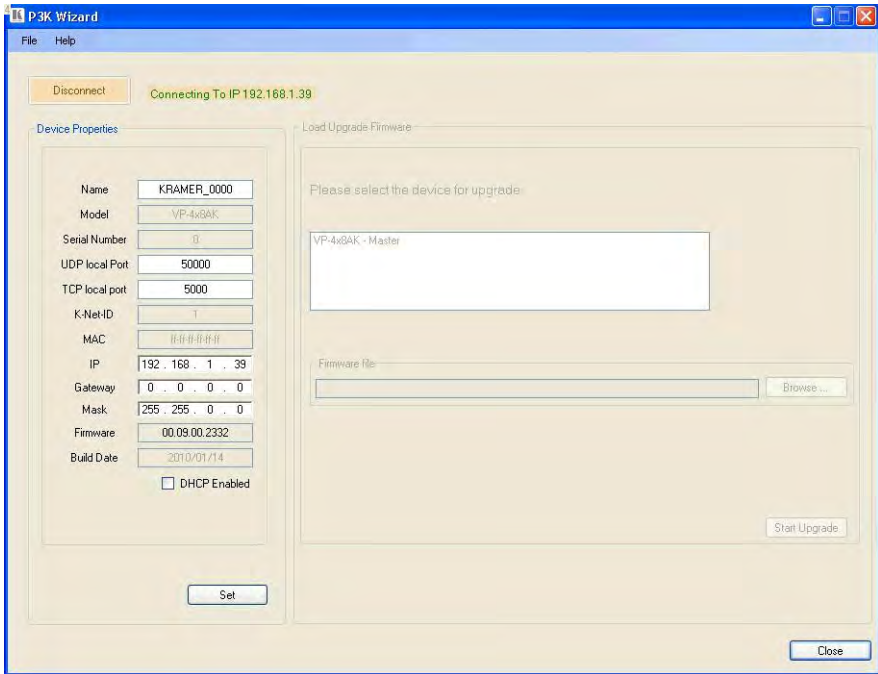


Figure 9: Device Properties Screen

4. If required, make changes and press Set. If not, click Close.

6.6 Control via the Ethernet Port

You can control the **VP-4x8AK** via RS-232/RS-485 or the Ethernet using the Kramer K-Router application.

If you are controlling a standalone unit via RS-232 or the Ethernet, configure the unit as master (Mach No. 1), see [Section 6.8](#).

6.7 Setting the Switching Delay Time

You can achieve clean transitions when switching between non-genlocked sources by setting the delay time—ranging from 0sec to 3.5sec¹. The factory default delay is to 0sec.

To set the delay time, do the following:

1. Press the VIDEO and AUDIO front panel buttons simultaneously.
The 7-segment display shows the current switching delay time.
2. Use the + and – front panel buttons to set the delay time as required.

To exit the Delay mode, press the TAKE front panel button.

6.8 Setting the Machine Number

The MACH. # (machine number) determines the position of a **VP-4x8AK** unit when cascading units.

To set the MACH. #, do the following:

1. Press the STO and RCL front panel buttons simultaneously.
The 7-segment display shows the current machine number.
2. Use the + and – front panel buttons to set the machine number as required.

To exit the MACH. # mode, press the TAKE front panel button.

6.9 Cascading Machines

You can cascade up to 16 **VP-4x8AK** units with control from a PC or serial controller.

To cascade up to 16 individual **VP-4x8AK** units via RS-485 (as illustrated in [Figure 10](#)), do the following:

1. Connect the sources and acceptors, as [Section 6.1](#) describes.
2. Connect the RS-232 port² of the first **VP-4x8AK** unit to a PC.
3. Connect the RS-485 terminal block port on the first unit to the RS-485 port on the second **VP-4x8AK** unit and so on, connecting all the RS-485 ports.
4. Set the machine numbers of the connected machines, as described in [Section 6.8](#), by set the first **VP-4x8AK** unit as Machine # 1 and the following 15 **VP-4x8AK** units as Machine # 2 to Machine # 16.

¹ In increments of 0.5sec

² Alternatively, the ETHERNET port could be used for PC control (instead of RS-232)

- Set the RS-485 TERM DIP-switch ON on the first and last **VP-4x8AK** units (terminating the RS-485 line at 120Ω). Set the RS-485 TERM DIP-switch OFF on the other **VP-4x8AK** units.

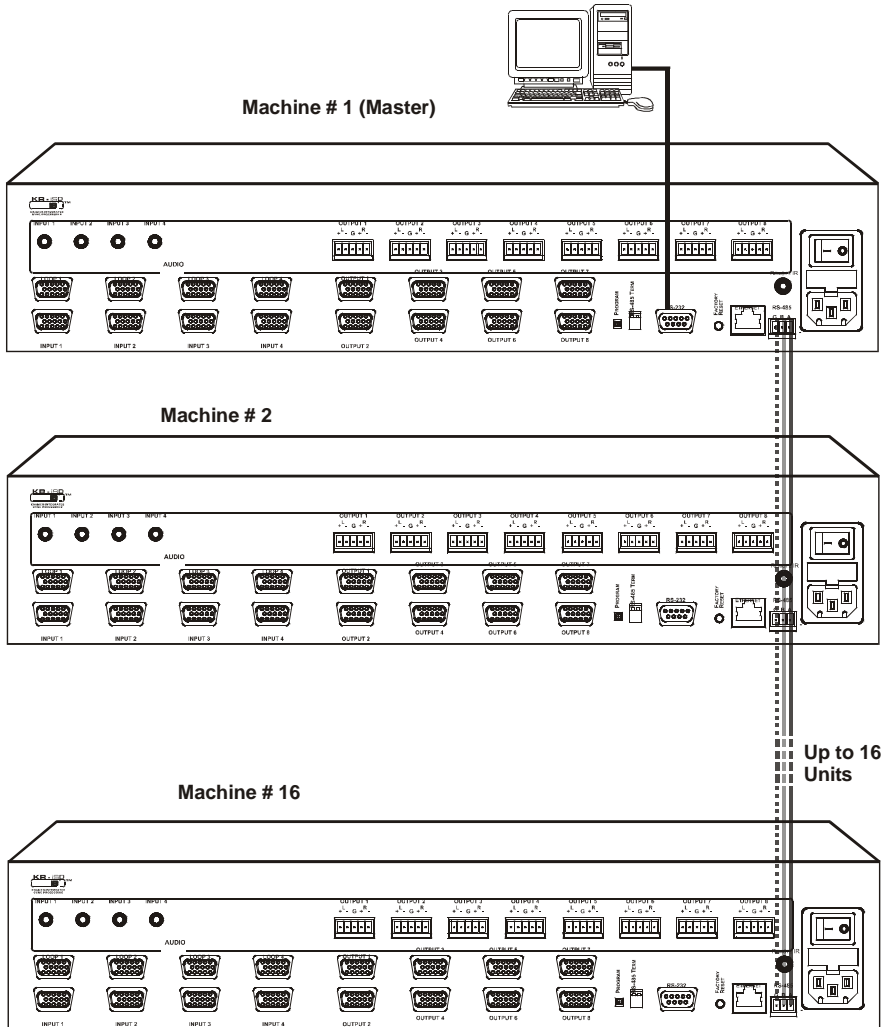


Figure 10: Control Configuration via RS-232 and RS-485

7 Operating the VP-4x8AK

This section describes how to:

- Use the IN and OUT buttons (see [Section 7.1](#))
- Read the 7-segment displays (see [Section 7.2](#))
- Confirm settings (see [Section 7.3](#))
- Store and recall input/output configurations (see [Section 7.4](#))
- Lock the front panel (see [Section 7.5](#))
- Choose the audio-follow-video or the breakaway feature (see [Section 7.6](#))
- Use the audio gain control (see [Section 7.7](#))

7.1 Switching an Input to an Output

To switch an input to an output:

1. Press the required OUT button.
The input under the selected output on the IN 7-segment display blinks.
2. Press an IN button to select the input to switch to the output.
The selected input number appears on the 7-segment display.

Incomplete operations on the **VP-4x8AK** timeout after 15 seconds

7.2 Understanding the 7-Segment Displays

The **VP-4x8AK** has two displays:

- The STATUS 7-segment display
- The REL. AUDIO LEVEL (dB) 7-segment display

7.2.1 The STATUS 7-Segment Display

During normal operation, the STATUS display shows which inputs are switched to which outputs, as illustrated in [Figure 11](#). In the VIDEO mode, the display shows the video signal setup and in the AUDIO mode, it shows the audio signal setup. In the AFV it shows both signals (see [Section 7.6](#)).

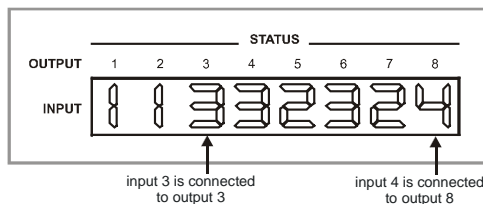


Figure 11: 7-segment display During Normal Operation

[Figure 12](#) shows an example of the display immediately after switching on the power. This display disappears after a few seconds, replaced by the normal display.

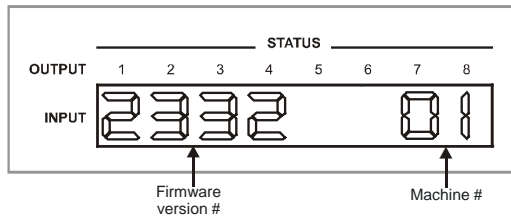


Figure 12: 7-segment Display after Turning the Switcher ON

7.2.2 The REL AUDIO LEVEL 7-Segment Display

The REL AUDIO LEVEL display, as illustrated in [Figure 13](#), is active only in the AUDIO and AFV modes (see [Section 7.7](#)).

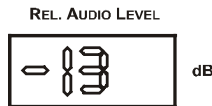


Figure 13: REL AUDIO LEVEL 7-segment Display

7.3 Confirming Settings

You can choose to work in the At Once or the Confirm mode.

In the At Once mode (TAKE button does not illuminate):

- Pressing an OUT-IN combination implements the switch immediately
- You save time as execution is immediate and actions require no user confirmation
- No protection is offered to allow the correction of an erroneous action before it is implemented

In the Confirm mode (TAKE button illuminates):

- You can key-in several actions and then confirm them by pressing the TAKE button, to simultaneously activate the multiple switches
- Every action requires user confirmation, protecting against erroneous switching
- Execution is delayed¹ until the user confirms the action

¹ Failure to press the TAKE button within 40 seconds (the Timeout) will abort the action

7.3.1 Toggling between the At Once and Confirm Modes

To toggle between the At Once and Confirm modes, do the following:

1. Press the TAKE button to toggle from the At Once mode (in which the TAKE button does not illuminate) to the Confirm mode (in which the TAKE button illuminates).
Actions now require user confirmation and the TAKE button illuminates.
2. Press the illuminated TAKE button to toggle from the Confirm mode back to the At Once mode.
Actions no longer require user confirmation and the TAKE button no longer illuminates.

7.3.2 Confirming a Switching Action

To confirm a switching action (in the Confirm mode), do the following:

1. Press an OUT-IN combination.
The corresponding 7-segment display blinks with the new value. The TAKE button also blinks.
2. Press the blinking TAKE button to confirm the action.
The corresponding 7-segment display no longer blinks. The TAKE button illuminates.

To confirm several actions (in the Confirm mode), do the following:

1. Press each OUT-IN combination in sequence.
The corresponding 7-segment display blinks. The TAKE button also blinks.
2. Press the blinking TAKE button to confirm all the actions.
The corresponding 7-segment display no longer blinks. The TAKE button illuminates.

7.4 Storing/Recalling Input/Output Configurations

You can store and recall up to 12 input/output configuration setups¹ using the eight OUT buttons and the four IN buttons, as [Figure 14](#) illustrates:

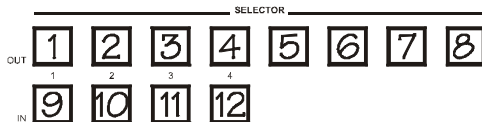


Figure 14: Storing and Recalling using the Input/Output Buttons

¹ You can store and recall audio and video configurations and audio gain data

7.4.1 Storing an Input/Output Configuration

To store the current status in memory, do the following:

1. Press the STO button.
The STO button blinks.
2. Press one of the 12 IN/OUT buttons (this will be the setup # in which the current status is stored). If in the Confirm mode, press the blinking TAKE button to confirm the action.
The memory stores the data at that reference.

7.4.2 Recalling an Input/Output Configuration

To recall an input/output configuration, do the following:

1. Press the RCL button.
The RCL button blinks.
2. Press the appropriate IN/OUT button (the button # corresponding to the setup #). If in the Confirm mode, that setup configuration will blink in the 7-segment display, together with the RCL button and the TAKE button, and will only be implemented after pressing the TAKE button.
The memory recalls the stored data from that reference.

Tip: If you cannot remember which of the 12-input/output configurations is the one that you want, set the **VP-4x8AK** to the Confirm mode and manually scan¹ all the input/output configurations until you locate it.

7.5 Locking the Front Panel

To prevent changing the settings accidentally or tampering with the unit via the front panel buttons, lock² your **VP-4x8AK**. Unlocking releases the protection mechanism.

To lock the **VP-4x8AK**:

- Press the LOCK button for more than two seconds, until the LOCK button is illuminated.
The front panel is locked. Pressing a button will have no effect other than causing the LOCK button to blink³

To unlock the **VP-4x8AK**:

- Press the illuminated LOCK button, for more than two seconds, until the LOCK button is no longer illuminated and the front panel unlocks

¹ By pressing the RCL button followed by the INPUT/OUTPUT buttons

² Even when the front panel is locked you can still operate via RS-232 or RS-485, as well as via the infrared remote control transmitter

³ Warning that you need to unlock to regain control via the front panel

7.6 Choosing the Audio-Follow-Video or Breakaway Option

You can switch stereo audio signals in one of two ways, either:

- Audio-follow-video (AFV), in which all operations relate to both the video and the audio channels; or
- Breakaway, in which video and audio channels switch independently

7.6.1 Setting the Audio-Follow-Video Option

To set the Audio-follow-video (AFV) option, press the AFV button:

- If the AUDIO and VIDEO configurations are the same, then the AFV button illuminates. The audio follows the video.
- If the AUDIO differs from the VIDEO, then the TAKE and the AUDIO buttons flash. Also, the audio outputs, which are changed, flash¹ in the INPUT STATUS 7-segment display. Press the TAKE button to confirm the modification. The audio follows the video.

7.6.2 Setting the Breakaway Option

To set the Breakaway option:

Press either the AUDIO (for audio control only) or the VIDEO (for video control only) button:

- If the AUDIO button illuminates, switching operations relate to Audio, and the 7-segment display shows the audio status
- If the VIDEO button illuminates, switching operations relate to Video, and the 7-segment display shows the video status

7.7 The Audio Input/Output Gain Control

The audio output² signal gain is activated when the machine is in the AUDIO or AFV mode.

To increase or decrease the audio gain:

1. Select the output whose audio gain you want to change.
For example, press OUT 4.
The OUT 4 button blinks and so does the respective input on the display.
2. Press the + or – button to increase or decrease, respectively, the audio gain of the selected output.
The audio gain display lights and the audio level value shows on the display.

¹ Warning that you are about to modify the audio configuration for AFV operation

² In this section, the output also refers to the input

The **VP4x8AK** output audio signal level¹ is shown on the REL. AUDIO LEVEL 7-segment display.

The factory default audio gain is set to 0dB. An audio gain value of 0dB indicates that the output signal value is identical to the input signal value. When increasing/decreasing the audio gain, the output signal level is higher/lower than the input signal level.

Gain level values are relative since the audio input signal can be also adjusted, while the range of the output gain remains constant¹, independent of the input level adjustment.

8 Flash Memory Upgrade

The **VP4x8AK** uses a microcontroller that runs firmware located in FLASH memory.

The latest version of firmware and installation instructions can be downloaded from the Kramer Web site at www.kramerelectronics.com.

¹ The input level ranges from -100 to +20 and the output level ranges from -100 to +7.5

9 Controlling via the Embedded Web Pages

You can remotely operate the **VP-4x8AK** using a Web browser via the Ethernet connection (see [Section 9.1](#)). To be able to do so, you must use a supported Web browser; Microsoft (V6.0 and higher), Chrome, or Firefox (V3.0 and higher).

To check that Java is installed correctly and running, browse to: <http://www.java.com/en/download/help/testvm.xml>

This page runs a test and displays a Java success (see [Figure 15](#)) or failure message.



Figure 15: Java Test Page Success Message

If you do not see the success message, follow the instructions on the page to:

- Load and enable Java
- Enable Javascript in your browser

9.1 Connecting to the VP-4x8AK via your Browser

Make sure that your PC is connected via a network to the **VP-4x8AK** and do the following:

1. Open your Internet browser.
2. Enter the unit's IP number¹ or name in the Address bar of your browser.
If you are using DHCP, you have to enter the name.



Figure 16: Entering the IP Number in the Address Bar

¹ The default IP number is 192.168.1.39, and may be changed by the system integrator

The following window appears:

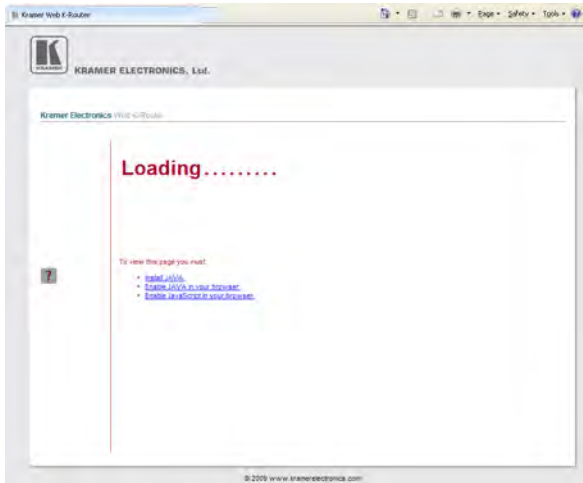


Figure 17: Loading the Embedded Web Pages

Check that Java and JavaScript is enabled in your browser. The following window appears:



Figure 18: First Time Security Warning

3. Click Run.

The **VP-4x8AK** switching control page is displayed (see [Figure 19](#)).

The Web embedded screens let you control the **VP-4x8AK** via the Ethernet. The menu appears on the left side of the screen. There are three remote operation Web pages:

- The switching matrix (see [Section 9.2](#))
- Audio gain control (See [Section 9.3](#))
- Configuration (See [Section 9.4](#))

A help box is available for each screen when clicking the question mark that appears on the left side of the screen.

9.2 The VP-4x8AK Switching Matrix Page

The **VP-4x8AK** switching matrix page lets you route any or all of the four inputs to any or all of the eight outputs, by clicking the audio and/or video signal indicators (purple and blue, respectively):

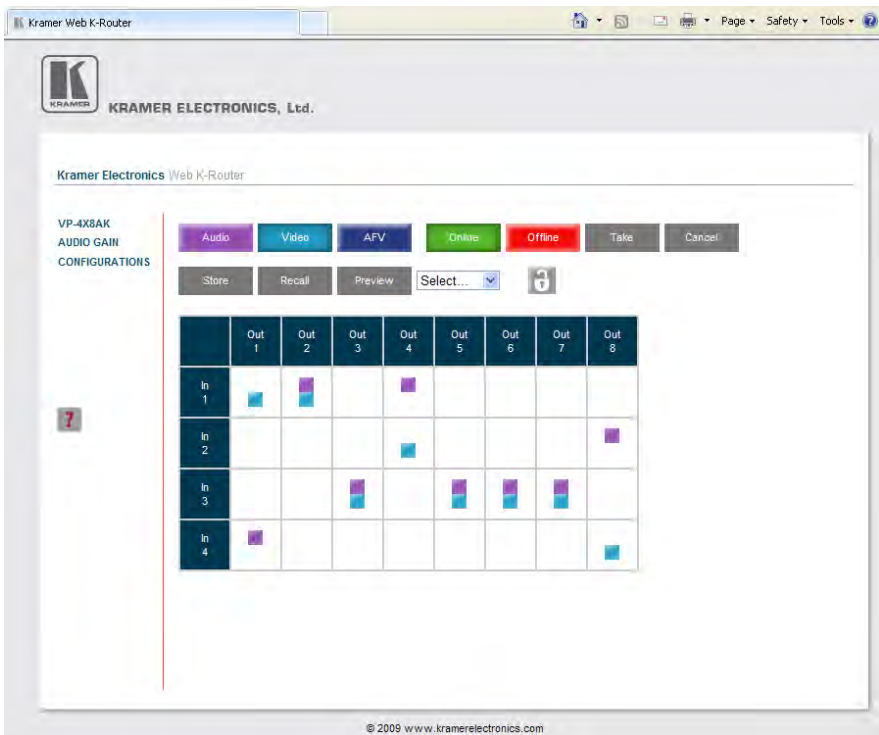


Figure 19: VP-4x8AK Embedded Web Page

You can perform the following operations via this Web page:

- Operate in the AFV mode or switch the audio and video separately, by clicking the Audio, Video or AFV buttons (see [Section 9.2.1](#))
- Deselect an audio and/or video signal¹ by clicking that signal indicator
- Operate in the At Once or Confirm mode (see [Section 9.2.2](#))
- Lock or unlock the front panel, by clicking the lock icon
- Store and recall switching configurations (see [Section 9.2.3](#))

9.2.1 Switch an Input to an Output via the Embedded Web Pages

To switch an input to an output (for example, input 1 to output 4):

1. Set the button to the desired operation mode (Audio, Video or AFV, as required).
2. Click the switching-point within the switching matrix (In 1 to Out 4).
The audio/video signal indicators move to the In 1 to Out 4 switching matrix box, indicating that In 1 is now switched to Out 4.

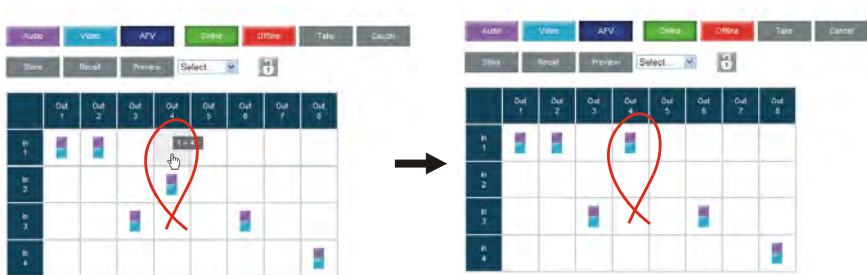


Figure 20: Switching an Input to an Output

9.2.2 Operate in the Confirm Mode

By default, the device is set to the At-Once mode. To operate in the Confirm mode:

1. Click the red Offline button.
2. Click the desired switching-point in the switching matrix.
Audio/video indicator outlines appear and the Take and Cancel buttons turn blue.

¹ Depending on the operation mode (Audio, Video or AFV)



Figure 21: Switching an Input to an Output

3. Click either Take (to accept change) or Cancel.

You can repeat steps 2 and 3 several times.
To confirm several actions, select several switching points and then press TAKE

4. Click the Online button to exit the Confirm mode.

If you click the Online button before you click the TAKE button, the following warning appears:

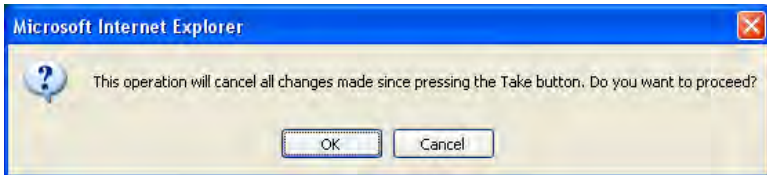


Figure 22: Exiting Offline Warning

9.2.3 Store and Recall Setups

To store a matrix configuration:

1. From the Preset drop-down list, select a preset (for example, Preset 07). Presets that contain a configuration are displayed with a blue background; presets with no configuration have a white background. When selecting a preset, the Store button changes from gray to dark blue.

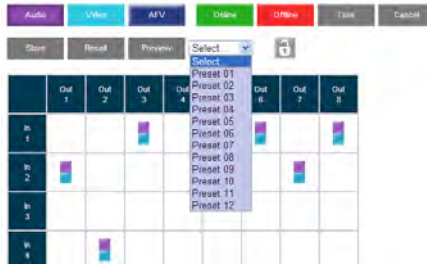


Figure 23: Selecting a Preset

2. Click the Preview button to view the current setup stored in Preset 7.
3. Make sure the matrix is set to the desired configuration. If not, set it as required.
4. Click Store.
The following window appears:

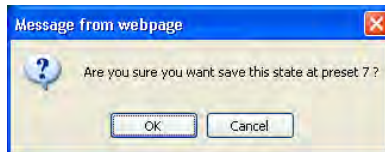


Figure 24: Save Preset Message

5. Click OK.
The new In/Out configuration is stored in Preset 07.

To recall a preset configuration:

1. Select the desired preset number from the Preset drop-down list¹ (for example, Preset 03):
2. Click and hold the Preview button to view the selected Preset and then release.
3. Click Recall.
The following window appears:

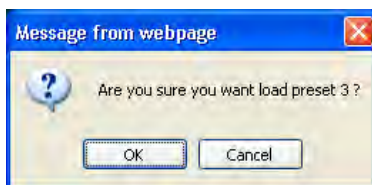


Figure 25: Load Preset Message

¹ When selecting a preset that contains a configuration, the Recall button changes from gray to dark blue

4. Click OK.

The new In/Out configuration takes effect.

You can recall a preset configuration in the Confirm mode by repeating the above procedure in the Offline state. The recalled configuration will become active when you press the Take button.

Kramer Electronics Web K-Router

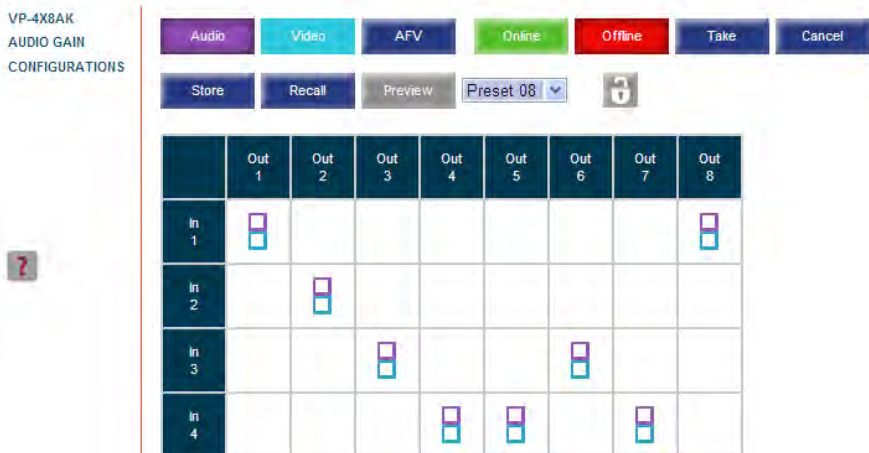


Figure 26: Recalling a Preset in the Confirm Mode

The Help Box

This is the main panel window. In this window you can control the channels.

9.3 Audio Gain Page

The AUDIO GAIN screen lets you set the gain for each of the input and output channels:

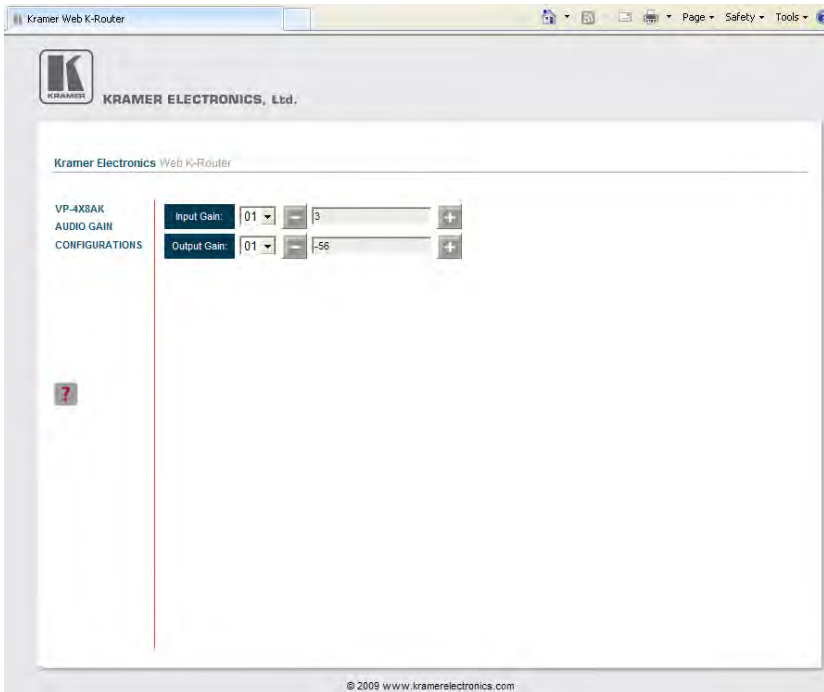
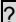


Figure 27: Audio Gain Page

To change an input or output gain, select the channel number, then click and hold the + or – buttons to increase or decrease the gain, respectively.

A single click will increase/decrease the audio gain by 0.5 units; double click to increase/decrease the gain by 1 unit.

The Help Box 

In this page you can control the audio gain of the channels.

9.4 The Configurations Page

The CONFIGURATIONS page lets you view some Ethernet settings¹ and change others (see [Figure 28](#)).

To change CONFIGURATION definitions:

1. Click CONFIGURATIONS. The CONFIGURATIONS Web page appears.
2. Change the definitions as required.
3. Click the Submit button to apply changes². A window appears asking if you are sure you want to change the network settings.
4. Click Yes.
A window appears announcing that the configuration has been successfully changed.
5. Click OK
6. If the IP number had been changed, close the browser and reload the Web page.

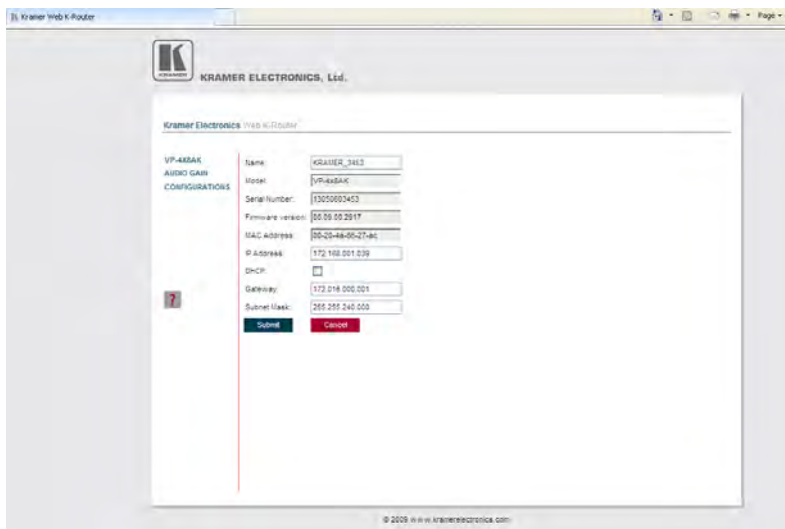


Figure 28: CONFIGURATIONS Embedded Web Page

HELP BOX

This page lets you view and set the device configuration.

¹ The model name, serial number, firmware version and MAC address

² Or Cancel to cancel changes

10 Technical Specifications

[Table 4](#) lists the technical specifications:

Table 4: Technical Specifications¹ of the VP-4x8AK 4x8 Video Audio Matrix Switcher

INPUTS:	4 XGA on 15-pin HD connectors (VGA through UXGA); 4 unbalanced stereo audio 3.5mm mini connectors	
OUTPUTS:	8 VGA on 15-pin HD connectors (VGA through UXGA); 4 LOOP XGA on 15-pin HD connectors (VGA through UXGA) 8 balanced stereo audio terminal block connectors	
MAX. OUTPUT LEVEL:	VIDEO: 2.3Vpp	AUDIO: 3.2dBu
BANDWIDTH (-3dB):	VIDEO: 360MHz	AUDIO: 22kHz
DIFF. GAIN:	0.05%	
DIFF. PHASE:	0.05%	
K-FACTOR:	<0.05%	
S/N RATIO:	VIDEO: 66dB @5MHz	AUDIO: 82dB
CROSSTALK (all hostile):	VIDEO: -52dB, 5MHz	AUDIO: Bal: <-70dB @20kHz
CONTROLS:	Input/output selector buttons, all, off, video, audio, AFV, store, recall, take audio level, and lock buttons. RS-232, RS-485, and Ethernet control. Input and output level control, infrared	
COUPLING:	VIDEO: DC	AUDIO: AC
AUDIO THD + NOISE:	0.24%	
AUDIO 2nd HARMONIC:	0.002%	
POWER SOURCE:	100-240V AC, 19VA	
DIMENSIONS:	19" x 7" x 2U W, D, H	
WEIGHT:	3.8kg (8.4lbs) approx	
ACCESSORIES:	Power cord, rack "ears", Windows®-based control software, external remote IR receiver cable ²	

¹ Specifications are subject to change without notice

² P/N: C-A35M/IRR-50



11 Communication Parameters

[Table 5](#) lists the communication parameters as used in Kramer Electronics products.

Table 5: Communication Parameters

EDID			
EDID data is passed between Output 1 and Input 1			
RS-232			
Protocol 2000		Protocol 3000 (Default)	
Baud Rate:	9600	Baud Rate:	115,200
Data Bits:	8	Data Bits:	8
Stop Bits:	1	Stop Bits:	1
Parity:	None	Parity:	None
Command Format:	HEX	Command Format:	ASCII
Example (Output 1 to Input 1):	0x01, 0x81, 0x81, 0x81	Example (Output 1 to Input 1):	#AV 1>1<CR>
Switching Protocol			
P2000 -> P3000		P3000 -> P2000	
Command:	0x38, 0x80, 0x83, 0x81	Command:	#P2000<CR>
Front Panel:	Press and hold Output 1 and Output 3 simultaneously	Front Panel:	Press and hold Output 1 and Output 2 simultaneously
Ethernet			
Default Settings		Reset Settings	
IP Address: 192.168.1.39	Power cycle the unit while holding in the Factory Reset button, located on the rear panel of the unit.		
TCP Port #: 5000			
UDP Port #: 50000			

12 Table of ASCII Codes for Serial Communication (Protocol 3000)

[Table 6](#) and [Table 7](#) list the ASCII values to switch an input to an output for a single **VP-4x8AK** machine. For more detailed information, see Protocol 3000 ([Section 14.2](#)).

Table 6: VP-4x8AK Video Signal Codes for Protocol 3000

	OUT 1	OUT 2	OUT 3	OUT 4	OUT 5	OUT 6	OUT 7	OUT 8
IN 1	#V 1>1	#V 1>2	#V 1>3	#V 1>4	#V 1>5	#V 1>6	#V 1>7	#V 1>8
IN 2	#V 2>1	#V 2>2	#V 2>3	#V 2>4	#V 2>5	#V 2>6	#V 2>7	#V 2>8
IN 3	#V 3>1	#V 3>2	#V 3>3	#V 3>4	#V 3>5	#V 3>6	#V 3>7	#V 3>8
IN 4	#V 4>1	#V 4>2	#V 4>3	#V 4>4	#V 4>5	#V 4>6	#V 4>7	#V 4>8

Table 7: VP-4x8AK Audio Signal Codes for Protocol 3000

	OUT 1	OUT 2	OUT 3	OUT 4	OUT 5	OUT 6	OUT 7	OUT 8
IN 1	#A 1>1 CR	#A 1>2 CR	#A 1>3 CR	#A 1>4 CR	#A 1>5 CR	#A 1>6 CR	#A 1>7 CR	#A 1>8 CR
IN 2	#A 2>1 CR	#A 2>2 CR	#A 2>3 CR	#A 2>4 CR	#A 2>5 CR	#A 2>6 CR	#A 2>7 CR	#A 2>8 CR
IN 3	#A 3>1 CR	#A 3>2 CR	#A 3>3 CR	#A 3>4 CR	#A 3>5 CR	#A 3>6 CR	#A 3>7 CR	#A 3>8 CR
IN 4	#A 4>1 CR	#A 4>2 CR	#A 4>3 CR	#A 4>4 CR	#A 4>5 CR	#A 4>6 CR	#A 4>7 CR	#A 4>8 CR

Table 8 lists the codes that set the audio input gain. For more detailed information, see Section 14.2.

Table 8: VP-4x8AK Audio Input Gain Codes

INPUT 1		INPUT 5		INPUT X*	Level [Rel]
#AUD-LVL 1,1, -100 CR	...	#AUD-LVL 1,5, -100 CR	...	#AUD-LVL 1,X, -100 CR	-100dB Mute
⋮		⋮		⋮	
#AUD-LVL 1,1, -50 CR	...	#AUD-LVL 1,5, -50 CR	...	#AUD-LVL 1,X, -50 CR	-50dB
⋮		⋮		⋮	
#AUD-LVL 1,1, 0 CR	...	#AUD-LVL 1,5, 0 CR	...	#AUD-LVL 1,X, 0 CR	0dB
⋮		⋮		⋮	
#AUD-LVL 1,1, 20 CR	...	#AUD-LVL 1,5, 20 CR	...	#AUD-LVL 1,X, 20 CR	+20dB (Max)

* Where X is the input number from 1 - 8. For example, for channel 7 and relative level -50dB, #AUD-LVL 1,7, -50 CR

Table 9 lists the codes that set the audio output gain. For more detailed information, see Section 14.2.

Table 9: VP-4x8AK Audio Output Gain Codes

OUTPUT 1		OUTPUT 5		OUTPUT X*	Level [Rel]
#AUD-LVL 2,1, -100 CR	...	#AUD-LVL 2,5, -100 CR	...	#AUD-LVL 2,X, -100 CR	-100dB Mute
⋮		⋮		⋮	
#AUD-LVL 2,1, -50 CR	...	#AUD-LVL 2,5, -50 CR	...	#AUD-LVL 2,X, -50 CR	-50dB
⋮		⋮		⋮	
#AUD-LVL 2,1, 0 CR	...	#AUD-LVL 2,5, 0 CR	...	#AUD-LVL 2,X, 0 CR	0dB
⋮		⋮		⋮	
#AUD-LVL 2,1, 13 CR	...	#AUD-LVL 2,5, 13 CR	...	#AUD-LVL 2,X, 7 CR	+7dB (Max)

* Where X is the output number from 1 - 8. For example, for channel 7 and relative level -50dB, #AUD-LVL 2,7, -50 CR

13 Table of Hex Codes for Serial Communication (Protocol 2000)

The Hex codes listed in this section are used to set video channels for a single machine (set as Machine 1) connected via either RS-232 or Ethernet. Similar hex codes are used when the VP-4x8AK is connected via RS-485 and the machine is set to number 2.

Table 10 lists the Hex codes that switch video channels:

Table 10: VP-4x8AK Hex Codes for Switching via RS-232/RS-485

Switching Video Channels								
	OUT 1	OUT 2	OUT 3	OUT 4	OUT 5	OUT 6	OUT 7	OUT 8
IN 1	01 81 81 81	01 81 82 81	01 81 83 81	01 81 84 81	01 81 85 81	01 81 86 81	01 81 87 81	01 81 88 81
IN 2	01 82 81 81	01 82 82 81	01 82 83 81	01 82 84 81	01 82 85 81	01 82 86 81	01 82 87 81	01 82 88 81
IN 3	01 83 81 81	01 83 82 81	01 83 83 81	01 83 84 81	01 83 85 81	01 83 86 81	01 83 87 81	01 83 88 81
IN 4	01 84 81 81	01 84 82 81	01 84 83 81	01 84 84 81	01 84 85 81	01 84 86 81	01 84 87 81	01 84 88 81

Table 11 lists the Hex codes that switch video channels:

Table 11: VP-4x8AK Hex Codes for Switching Audio Channels via RS-232/RS-485

Switching Audio Channels								
	OUT 1	OUT 2	OUT 3	OUT 4	OUT 5	OUT 6	OUT 7	OUT 8
IN 1	02 81 81 81	02 81 82 81	02 81 83 81	02 81 84 81	02 81 85 81	02 81 86 81	02 81 87 81	02 81 88 81
IN 2	02 82 81 81	02 82 82 81	02 82 83 81	02 82 84 81	02 82 85 81	02 82 86 81	02 82 87 81	02 82 88 81
IN 3	02 83 81 81	02 83 82 81	02 83 83 81	02 83 84 81	02 83 85 81	02 83 86 81	02 83 87 81	02 83 88 81
IN 4	02 84 81 81	02 84 82 81	02 84 83 81	02 84 84 81	02 84 85 81	02 84 86 81	02 84 87 81	02 84 88 81

Table 12 lists the Hex codes that increase or decrease the audio input gain:

Table 12: VP-4x8AK Hex Codes for Increasing/Decreasing the Audio Input Gain

	IN 1	IN 2	IN 3	IN 4
Increase	18 81 86 81	18 82 86 81	18 83 86 81	18 84 86 81
Decrease	18 81 87 81	18 82 87 81	18 83 87 81	18 84 87 81

Table 13 lists the Hex values that set the audio input gain:

Table 13: VP-4x8AK Hex Codes for Setting the Audio Input Gain

IN 1	IN 2	IN 3	IN 4	Level [Rel]
16 81 80 81	16 82 80 81	16 83 80 81	16 84 80 81	Mute
⋮	⋮	⋮	⋮	
16 81 87* 81	16 82 87* 81	16 83 87* 81	16 84 87* 81	-100dB Mute
⋮	⋮	⋮	⋮	
16 81 B9 81	16 82 B9 81	16 83 B9 81	16 84 B9 81	-50dB
⋮	⋮	⋮	⋮	
16 81 EB 81	16 82 EB 81	16 83 EB 81	16 84 EB 81	0dB
⋮	⋮	⋮	⋮	
16 81 FF 81	16 82 FF 81	16 83 FF 81	16 84 FF 81	+20dB (Max)

* BYTE 3 = 0x80 + Gain Value (0x00-0x7F)

Table 14 lists the Hex codes that increase or decrease the audio output gain:

Table 14: VP-4x8AK Hex Codes for Increasing/Decreasing the Output Gain

	OUT 1	OUT 2	OUT 3	OUT 4	OUT 5	OUT 6	OUT 7	OUT 8
Increase	18 81 80 81	18 82 80 81	18 83 80 81	18 84 80 81	18 85 80 81	18 86 80 81	18 87 80 81	18 88 80 81
Decrease	18 81 81 81	18 82 81 81	18 83 81 81	18 84 81 81	18 85 81 81	18 86 81 81	18 87 81 81	18 88 81 81

[Table 15](#) lists the Hex codes that set the audio output gain.

Before sending the any of the codes in [Table 15](#), the command 2A 87 80 81 must be sent.

Table 15: VP-4x8AK Hex Codes for Setting the Audio Output Gain

OUT 1	OUT 2	OUT 3	OUT 4	OUT 5	OUT 6	OUT 7	OUT 8	Level [Rel]
16 81 80 81	16 82 80 81	16 83 80 81	16 84 80 81	16 85 80 81	16 86 80 81	16 87 80 81	16 88 80 81	Mute
⋮	⋮	⋮	⋮	⋮	⋮	⋮	⋮	
16 81 94* 81	16 82 94* 81	16 83 8D* 81	16 84 94* 81	16 85 94* 81	16 86 94* 81	16 87 94* 81	16 88 94* 81	-100dB Mute
⋮	⋮	⋮	⋮	⋮	⋮	⋮	⋮	
16 81 C6 81	16 82 C6 81	16 83 C6 81	16 84 C6 81	16 85 C6 81	16 86 C6 81	16 87 C6 81	16 88 C6 81	-50dB
⋮	⋮	⋮	⋮	⋮	⋮	⋮	⋮	
16 81 F8 81	16 82 F8 81	16 83 F8 81	16 84 F8 81	16 85 F8 81	16 86 F8 81	16 87 F8 81	16 88 F8 81	0dB
⋮	⋮	⋮	⋮	⋮	⋮	⋮	⋮	
16 81 FF 81	16 82 FF 81	16 83 FF 81	16 84 FF 81	16 85 FF 81	16 86 FF 81	16 87 FF 81	16 88 FF 81	+7dB (Max)

*BYTE 3 = 0x80 + Gain Value (0x00-0x7F)

14 Kramer Protocol

By default, the **VP-4x8AK** is set to protocol 3000 (see [Section 14.2](#)) but is also compatible with Kramer's Protocol 2000¹ (see [Section 14.3](#)). [Section 14.1](#) describes how to switch between protocol 3000 and protocol 2000.

14.1 Switching Protocols

You can switch protocols either via the front panel buttons (see [Section 14.1.1](#)) or the protocol commands (see [Section 14.1.2](#)).

14.1.1 Switching Protocols via the Front Panel Buttons

To switch from protocol 3000 to protocol 2000, press and hold² the OUT 1 and OUT 2 buttons for a few seconds.

The display shows 2000.

To switch from protocol 2000 to protocol 3000, press and hold the OUT 1 and OUT 3 buttons for a few seconds.

The display shows 3000.

14.1.2 Switching Protocols via Protocol Commands

To switch from protocol 3000 to protocol 2000, send the following command:

```
#P2000<CR>
```

To switch from protocol 2000 to protocol 3000, send the following command:

```
0x38, 0x80, 0x83, 0x81
```

The Windows®-based Kramer control software³ operates with protocol 2000. If the **VP-4x8AK** is set to protocol 3000, it is automatically switched to protocol 2000.

14.2 Kramer Protocol 3000

This RS-232/RS-485 communication protocol lets you control the machine from any standard terminal software (for example, Windows® HyperTerminal Application) and uses a data rate of 115200 baud, with no parity, 8 data bits, and 1 stop bit.

¹ You can download our user-friendly "Software for Calculating Hex Codes for Protocol 2000" from the technical support section on our Web site at: <http://www.kramerelectronics.com>

² Not as part of a switching operation

³ Download the latest software from our Web site at <http://www.kramerelectronics.com>

14.2.1 Protocol 3000 Syntax

Host message format:

Start	Address (optional)	Body	Delimiter
#	Destination_id@	message	CR

Simple command (commands string with only one command without addressing):

start	body	delimiter
#	Command SP Parameter_1,Parameter_2,...	CR

Commands string (formal syntax with commands concatenation and addressing):

Address@ **Command_1** Parameter1_1,Parameter1_2,... |Command_2
 Parameter2_1,Parameter2_2,... |Command_3
 Parameter3_1,Parameter3_2,... |...**CR**

Device message format:

Start	Address (optional)	Body	Delimiter
~	Sender_id@	message	CR LF

Device long response (**Echoing command**):

Start	Address (optional)	Body	Delimiter
~	Sender_id@	command SP [param1 ,param2 ...] result	CR LF

CR = Carriage return (ASCII 13 = 0x0D)

LF = Line feed (ASCII 10 = 0x0A)

SP = Space (ASCII 32 = 0x20)

14.2.2 Command Parts Details

Command:

Sequence of ASCII letters ('A'-'Z', 'a'-'z' and '_').

Command will separate from parameters with at least single space.

Parameters:

Sequence of Alfa-Numeric ASCII chars ('0'-'9','A'-'Z','a'-'z' and some special chars for specific commands), parameters will be separated by commas.

Message string:

Every command must to be entered as part of message string that begin with **message starting char** and end with **message closing char**, note that string can contain more then one command separated by pipe ("|") char.

Message starting char:

'#' for host command/query.

'~' for machine response.

Device address (Optional, for Knet):

Knet Device ID follow by '@' char.

Query sign = '?', will follow after some commands to define query request.



Kramer Protocol

Message closing char =

Host messages - Carriage Return (ASCII 13), will be referred to by **CR** in this document.

Machine messages - Carriage Return (ASCII 13) + Line-Feed (ASCII 10), will be referred to by **CRLF**.

Spaces between parameters or command parts will be ignored.

Commands chain separator char:

When **message string** contains more than one command, commands will be separated by pipe ("|").

Commands entering:

If terminal software used to connect over serial \ ethernet \ USB port, that possible to directly enter all commands characters (**CR**) will be entered by Enter key, that key send also **LF**, but this char will be ignored by commands parser).

Sending commands from some controllers (like Crestron) require coding some characters in special form (like \X##).

Anyway, there is a way to enter all ASCII characters, so it is possible to send all commands also from controller.

(Similar way can use for URL \ Telnet support that maybe will be added in future).

Commands forms:

Some commands have short name syntax beside the full name to allow faster typing, response is always in long syntax.

Commands chaining:

It is possible to enter multiple commands in same string by '|' char (pipe).

In this case the **message starting char** and the **message closing char** will be entered just one time, in the string beginning and at the end.

All the commands in string will not execute until the closing char will be entered.

Separate response will be sent for every command in the chain.

Input string max length:

64 characters.

Backward support:

Design note: transparent supporting for protocol 2000 will be implemented by switch protocol command from protocol 3000 to protocol 2000, in protocol 2000 there is already such a command to switch protocol to ASCII protocol (#56 : H38 H80 H83 H81).

Table 16: Instruction Codes for Protocol 3000

Help commands		
Command	Syntax	Response
Protocol Handshaking	# CR	~Ok CRLF
Device initiated messages		
Command	Syntax	
Start message	Kramer Electronics LTD. , Device Model Version Software Version	
Switcher actions		
Audio-video channel has switched (AFV mode)	AV IN>OUT	
Video channel has switched (Breakaway mode)	VID IN>OUT	
Audio channel has switched (Breakaway mode)	AUD IN>OUT	
Result codes (errors)		
	Syntax	
No error. Command running succeeded	COMMAND PARAMETERS OK	
Protocol Errors		
Syntax Error	ERR001	
Command not available for this device	ERR002	
Parameter is out of range	ERR003	
Unauthorized access (running command without the match login).	ERR004	

Basic routing commands		
Command	Syntax	Response
Switch audio & video	AV <u>IN</u> > <u>OUT</u> , <u>IN</u> > <u>OUT</u> , ...	AV <u>IN</u> > <u>OUT</u> , <u>IN</u> > <u>OUT</u> ... <u>RESULT</u>
Switch video only	VID <u>IN</u> > <u>OUT</u> , <u>IN</u> > <u>OUT</u> , ... Short form: V <u>IN</u> > <u>OUT</u> , <u>IN</u> > <u>OUT</u> , ...	VID <u>IN</u> > <u>OUT</u> , <u>IN</u> > <u>OUT</u> , ... <u>RESULT</u>
Note: When AFV mode is active, this command will switch also audio. If audio is breakaway – device display mode will change to show audio connections status.		
Switch audio only	AUD <u>IN</u> > <u>OUT</u> , <u>IN</u> > <u>OUT</u> , ... Short form: A <u>IN</u> > <u>OUT</u> , <u>IN</u> > <u>OUT</u> , ...	AUD <u>IN</u> > <u>OUT</u> , <u>IN</u> > <u>OUT</u> , ... <u>RESULT</u>
Note: When AFV mode is active, this command will switch also video.		
Read video connection	VID? <u>OUT</u> Short form: V? <u>OUT</u> VID? *	VID <u>IN</u> > <u>OUT</u> VID <u>IN</u> >1, <u>IN</u> >2, ...
Read audio connection	AUD? <u>OUT</u> Short form: A? <u>OUT</u> AUD? *	AUD <u>IN</u> > <u>OUT</u> AUD <u>IN</u> >1, <u>IN</u> >2, ...
Parameters Description: <u>IN</u> = Input number or '0' to disconnect output. '>' = Connection character between in and out parameters. <u>OUT</u> = Output number or '*' for all outputs.		
Examples:		
Switch Video and Audio input 3 to output 7	#AV 3>7 <u>CR</u>	~AV 3>7 OK <u>CRLF</u>
Switch Video input 2 to output 4	#V 2>4 <u>CR</u>	~VID 2>4 OK <u>CRLF</u>
Switch Video input 4 to output 2 in machine number 6	#6@VID 4>2 <u>CR</u>	~6@VID 4>2 OK <u>CRLF</u>
Disconnect Video and Audio Output 4	#AV 0>4 <u>CR</u>	~AV 0>4 OK <u>CRLF</u>
Switch Video Input 3 to All Outputs	#V 3>* <u>CR</u>	~VID 3>* OK <u>CRLF</u>
Chaining Multiple commands*	#AV 1>* V 3>4, 2>2, 82>1, 0>2 V 82>3 A 0>1 V? * <u>CR</u> First switch all Audio and video outputs from input 1, Then switch video input 3 to output 4, video input 2 to output 2, video input and disconnect video output 2. Then switch audio input 3 to output 2, Then disconnect audio output 1. Then get status of all links (assume this is 4x4 matrix). Commands processing start after entering <u>CR</u> , response will sent for each command after processing it.	~AV 1>* OK <u>CRLF</u> ~VID 1>2, 3>4 OK <u>CRLF</u> ~VID 82>3 <u>ERR###</u> <u>CRLF</u> ~AUD 0>1 OK <u>CRLF</u> ~V 1>1, 0>2, 1>3, 3>4 <u>CRLF</u>

Signal Status commands		
Command	Syntax	Response
Change signal status	-----	SIGNAL <u>INPUT</u> , <u>STATUS</u>
Get signal status	SIGNAL? <u>INPUT</u>	SIGNAL <u>INPUT</u> , <u>STATUS</u>



Parameters Description:

INPUT = Input number, "*" for all.

STATUS = Signal state:

"0" or "off" for not existent signal.

"1" or "on" for existent signal.

Preset commands

Command	Syntax	Response
Store current connections to preset	PRST-STO PRESET Short form: PSTO PRESET	PRST-STO PRESET RESULT
Recall saved preset	PRST-RCL PRESET Short form: PRCL PRESET	PRST-RCL PRESET RESULT
Delete saved preset	PRST-DEL PRESET Short form: PDEL PRESET	PRST-DEL PRESET RESULT
Read video connections from saved preset	PRST-VID? PRESET OUT Short form: PVID? PRESET OUT PRST-VID? PRESET , *	PRST-VID PRESET IN OUT PRST-VID PRESET IN >1, IN >2,...
Read audio connections from saved preset	PRST-AUD? PRESET OUT Short form: PAUD? PRESET OUT PRST-AUD? PRESET , *	PRST-AUD PRESET IN OUT PRST-AUD PRESET IN >1, IN >2,...
Read saved presets list	PRST-LST? Short form: PLST?	PRST-LST PRESET , PRESET , ...

Parameters Description:

PRESET = Preset number.

OUT = Output in preset to show for, "*" for all.

Examples:

Store current Audio & Video connections to preset 5	#PRST-STR 5 CR	~PRST-STR 5 OK CRLF
Recall Audio & Video connections from preset 3	#PRCL 3 CR	~PRST-RCL 3 OK CRLF
Show source of video output 2 from preset 3	#PRST-VID? 3,2 CR	~PRST-VID 3: 4>2 CRLF

Operation commands

Command	Syntax	Response
Lock front panel	LOCK-FP LOCK-MODE Short form: LCK LOCK-MODE	LOCK-FP LOCK-MODE RESULT
Get front panel locking state	LOCK-FP?	LOCK-FP LOCK-MODE

Parameters Description:

LOCK-MODE = Front panel locking state:

"0" or "off" to unlock front panel buttons.

"1" or "on" to lock front panel buttons.

Kramer Protocol

Restart device	RESET	RESET OK
Switch to protocol 2000*	P2000	P2000 OK

* Protocol 2000 has command to switch back to ASCII protocol (like protocol 3000)

Audio parameters commands		
Command	Syntax	Response
Set audio level in specific amplifier stage.	AUD-LVL <u>STAGE</u> <u>CHANNEL</u> <u>VOLUME</u> Short form: ADL <u>STAGE</u> <u>CHANNEL</u> <u>VOLUME</u>	AUD-LVL <u>STAGE</u> <u>CHANNEL</u> <u>VOLUME</u> <u>RESULT</u>
Read audio volume level	AUD-LVL? <u>STAGE</u> <u>CHANNEL</u> Short form: ADL? <u>STAGE</u>	AUD-LVL <u>STAGE</u> <u>CHANNEL</u> <u>VOLUME</u>

<p>Parameters Description:</p> <p>STAGE = "In","Out" or Numeric value (present audio processing stage). For example: "0" for Input level, "1" for Pre-Amplifier, "2" for Amplifier (Out) etc.</p> <p>CHANNEL = Input or Output #</p> <p>VOLUME = Audio parameter in Kramer units, precede minus sign for negative values.</p> <p style="margin-left: 20px;">++ increase current value, -- decrease current value.</p>

Machine info commands		
Command	Syntax	Response
* Time settings commands require admin authorization		
Read in/out count	INFO-IO?	INFO-IO: IN <u>INPUTS_COUNT</u> , OUT <u>OUTPUTS_COUNT</u>
Read max presets count	INFO-PRST?	INFO-PRST: VID <u>PRESET_VIDEO_COUNT</u> , AUD <u>PRESET_AUDIO_COUNT</u>
Reset configuration to factory default	FACTORY	FACTORY <u>RESULT</u>

Identification commands		
Command	Syntax	Response
Protocol Handshaking	# <u>CR</u>	~OK <u>CRLF</u>
Read device model	MODEL?	MODEL <u>MACHINE_MODEL</u>
Read device serial number	SN?	SN <u>SERIAL_NUMBER</u>
Read device firmware version	VERSION?	VERSION <u>MAJOR</u> <u>MINOR</u> <u>BUILD</u> <u>REVISION</u>
Set machine name	NAME <u>MACHINE_NAME</u>	NAME <u>MACHINE_NAME</u> <u>RESULT</u>



Identification commands		
Command	Syntax	Response
Read machine name	NAME?	NAME <u>MACHINE_NAME</u>
Reset machine name to factory default*	NAME-RST	NAME-RST <u>MACHINE_FACTORY_NAME</u> <u>RESULT</u>
<p>*Note: machine name not equal to model name. This name relevance for site viewer identification of specific machine or for network using (with DNS feature on). <u>MACHINE_NAME</u> = Up to 14 Alfa-Numeric chars. * Machine factory name = Model name + last 4 digits from serial number.</p>		
Set machine id number	MACH-NUM <u>MACHINE_NUMBER</u>	MACH-NUM <u>OLD_MACHINE_NUMBER</u> <u>NEW_MACHINE_NUMBER</u> <u>RESULT</u>
<p>* Response will send after machine number has been changed. So the replay with header will be: <u>NEW_MACHINE_NUMBER</u> @MACH-NUM <u>OLD_MACHINE_NUMBER</u> <u>NEW_MACHINE_NUMBER</u> OK</p>		

Network settings commands		
Set IP Address	NET-IP <u>IP_ADDRESS</u> NTIP	NET-IP <u>IP_ADDRESS</u> <u>RESULT</u>
Read IP Address	NET-IP? NTIP?	NET-IP <u>IP_ADDRESS</u>
Read MAC Address	NET-MAC? NTMC	NET-MAC <u>MAC_ADDRESS</u>
Set subnet mask	NET-MASK <u>SUBNET_MASK</u> NTMSK	NET-MASK <u>SUBNET_MASK</u> <u>RESULT</u>
Read subnet mask	NET-MASK? NTMSK?	NET-MASK <u>SUBNET_MASK</u>
Set gateway address	NET-GATE <u>GATEWAY_ADDRESS</u> NTGT	NET-GATE <u>GATEWAY_ADDRESS</u> <u>RESULT</u>
Read subnet mask	NET-GATE? NTGT?	NET-GATE <u>GATEWAY_ADDRESS</u>
Set DHCP mode	NET-DHCP <u>DHCP_MODE</u> NTDH	NET-DHCP <u>DHCP_MODE</u> <u>RESULT</u>
Read subnet mask	NET-DHCP? NTDH?	NET-DHCP <u>DHCP_MODE</u>
<p><u>DHCP_MODE</u> = 0 – Don't use DHCP (Use IP set by factory or IP set command). 1 – Try to use DHCP, if unavailable use IP as above.</p>		
Change protocol ethernet port	ETH-PORT <u>PROTOCOL</u> <u>PORT</u> ETHP	ETH-PORT <u>PROTOCOL</u> <u>PORT</u> <u>RESULT</u>
Read protocol ethernet port	ETH-PORT? <u>PROTOCOL</u> ETHP?	ETH-PORT <u>PROTOCOL</u> <u>PORT</u>
<p><u>PROTOCOL</u> = TCP / UDP (transport layer protocol) <u>PORT</u> = ethernet port to enter protocol 3000 commands. 1-65535 = User defined port 0 - reset port to factory default (50000 for UDP, 5000 for TCP)</p>		

Advanced switching commands		
Command	Syntax	Response
Set audio follow video mode	AFV <u>AFV-MODE</u>	AFV <u>AFV-MODE</u> <u>RESULT</u>
Note: This command effect device front-panel mode and AUD\VID command.		
Read audio follow video mode	AFV?	AFV <u>AFV-MODE</u>

AFV-MODE = Front panel AFV mode
 "0" or "afv" to set front panel switching buttons in audio-follow-video state.
 "1" or "brk" to set front panel switching buttons in their previous state when audio.

14.3 Kramer Protocol 2000

This RS-232/RS-485 communication protocol uses four bytes of information as defined below. The default data rate is 9600 baud, with no parity, 8 data bits and 1 stop bit.

Table 17: Protocol Definitions

MSB								LSB		
		DESTINATION	INSTRUCTION							
0	D	N5	N4	N3	N2	N1	N0			
7	6	5	4	3	2	1	0			
1st byte										
		INPUT								
1	I6	I5	I4	I3	I2	I1	I0			
7	6	5	4	3	2	1	0			
2nd byte										
		OUTPUT								
1	O6	O5	O4	O3	O2	O1	O0			
7	6	5	4	3	2	1	0			
3rd byte										
		MACHINE NUMBER								
1	OVR	X	M4	M3	M2	M1	M0			
7	6	5	4	3	2	1	0			
4th byte										

1st BYTE: Bit 7 – Defined as 0.

D – “DESTINATION”: 0 - for sending information to the switchers (from the PC);

1 - for sending to the PC (from the switcher).

N5...N0 – “INSTRUCTION”

The function that is to be performed by the switcher(s) is defined by the INSTRUCTION (6 bits). Similarly, if a function is performed via the machine’s keyboard, then these bits are set with the INSTRUCTION NO., which was performed. The instruction codes are defined according to the table below (INSTRUCTION NO. is the value to be set for N5...N0).

2nd BYTE: Bit 7 – Defined as 1.
 I6...I0 – “INPUT”.

When switching (ie. instruction codes 1 and 2), the INPUT (7 bits) is set as the input number which is to be switched. Similarly, if switching is done via the machine’s front-panel, then these bits are set with the INPUT NUMBER which was switched. For other operations, these bits are defined according to the table.

3rd BYTE: Bit 7 – Defined as 1.
 O6...O0 – “OUTPUT”.



Kramer Protocol

When switching (ie. instruction codes 1 and 2), the OUTPUT (7 bits) is set as the output number which is to be switched. Similarly, if switching is done via the machine's front-panel, then these bits are set with the OUTPUT NUMBER which was switched. For other operations, these bits are defined according to the table.

4th BYTE: Bit 7 – Defined as 1.

Bit 5 – Don't care.

OVR – Machine number override.

M4...M0 – MACHINE NUMBER.

Used to address machines in a system via their machine numbers. When several machines are controlled from a single serial port, they are usually configured together with each machine having an individual machine number. If the OVR bit is set, then all machine numbers will accept (implement) the command, and the addressed machine will reply.

For a single machine controlled via the serial port, always set M4...M0 = 1, and make sure that the machine itself is configured as MACHINE NUMBER = 1.

Table 18: Instruction Codes for Protocol 2000

Note: All values in the table are decimal, unless otherwise stated.

INSTRUCTION		DEFINITION FOR SPECIFIC INSTRUCTION		NOTE
#	DESCRIPTION	INPUT	OUTPUT	
0	RESET VIDEO	0	0	1
1	SWITCH VIDEO	Set equal to video input which is to be switched (0 = disconnect)	Set equal to video output which is to be switched (0 = to all the outputs)	2
2	SWITCH AUDIO	Set equal to audio input which is to be switched (0 = disconnect)	Set equal to audio output which is to be switched (0 = to all the outputs)	2
3	STORE VIDEO STATUS	Set as SETUP #	0 - to store 1 - to delete	2, 3
4	RECALL VIDEO STATUS	Set as SETUP #	0	2, 3
5	REQUEST STATUS OF A VIDEO OUTPUT	Set as SETUP #	Equal to output number whose status is reqd	4, 3
6	REQUEST STATUS OF AN AUDIO OUTPUT	Set as SETUP #	Equal to output number whose status is reqd	4, 3
8	BREAKAWAY SETTING	0	0 - audio-follow-video 1 - audio breakaway	2
11	REQUEST BREAKAWAY SETTING	Set as SETUP #	0 - Request audio breakaway setting	3, 4, 6
15	REQUEST WHETHER SETUP IS DEFINED / VALID INPUT IS DETECTED	SETUP # or Input #	0 - for checking if setup is defined 1 - for checking if input is valid	8
16	ERROR / BUSY	For invalid / valid input (i.e. OUTPUT byte = 4 or OUTPUT byte = 5), this byte is set as the input #	0 - error 1 - invalid instruction 2 - out of range 3 - machine busy 4 - invalid input 5 - valid input 6 - RX buffer overflow	9, 25
22	SET AUDIO PARAMETER	Equal to input / output number whose parameter is to be set (0 = all)	Set as parameter value	2, 24
24	INCREASE / DECREASE AUDIO PARAMETER	Equal to input / output number whose parameter is to be increased / decreased (0 = all)	0 - increase output 1 - decrease output 2 - increase left output 3 - decrease left output 4 - increase right output 5 - decrease right output 6 - increase input 7 - decrease input 8 - increase left input 9 - decrease left input 10 - increase right input 11 - decrease right input	2
25	REQUEST AUDIO PARAMETER	Equal to input / output number whose parameter is requested	0	6, 24
30	LOCK FRONT PANEL	0 - Panel unlocked 1 - Panel locked	0	2

Kramer Protocol

INSTRUCTION		DEFINITION FOR SPECIFIC INSTRUCTION		NOTE
#	DESCRIPTION	INPUT	OUTPUT	
31	REQUEST WHETHER PANEL IS LOCKED	0	0	16
42	AUDIO PARAMETER SETTINGS FOR INSTRUCTIONS 22, 25	INPUT Bit: 10 - 0=input; 1=output		24
56	CHANGE TO ASCII	0	Kramer protocol 3000	19
61	IDENTIFY MACHINE	1 - video machine name 2 - audio machine name 3 - video software version 4 - audio software version	0 - Request first 4 digits 1 - Request first suffix 2 - Request second suffix 3 - Request third suffix 10 - Request first prefix 11 - Request second prefix 12 - Request third prefix	13
62	DEFINE MACHINE	1 - number of inputs 2 - number of outputs 3 - number of setups	1 - for video 2 - for audio	14

NOTES on the above table:

NOTE 1 - When the master switcher is reset, (e.g. when it is turned on), the reset code is sent to the PC. If this code is sent to the switchers, it will reset according to the present power-down settings.

NOTE 2 - These are bi-directional definitions. That is, if the switcher receives the code, it will perform the instruction; and if the instruction is performed (due to a keystroke operation on the front panel), then these codes are sent. For example, if the HEX code

01 85 88 83

was sent from the PC, then the switcher (machine 3) will switch input 5 to output 8. If the user switched input 1 to output 7 via the front panel keypad, then the switcher will send HEX codes:

41 81 87 83

to the PC.

When the PC sends one of the commands in this group to the switcher, then, if the instruction is valid, the switcher replies by sending to the PC the same four bytes that it was sent (except for the first byte, where the DESTINATION bit is set high).

NOTE 3 - SETUP # 0 is the present setting. SETUP # 1 and higher are the settings saved in the switcher's memory, (i.e. those used for Store and Recall).

NOTE 4 - The reply to a "REQUEST" instruction is as follows: the same instruction and INPUT codes as were sent are returned, and the OUTPUT is assigned the value of the requested parameter. The replies to instructions 10 and 11 are as per the definitions in instructions 7 and 8 respectively. For example, if the present status of machine number 5 is breakaway setting, then the reply to the HEX code

0B 80 80 85

would be HEX codes

4B 80 81 85

NOTE 6 - If INPUT is set to 127 for these instructions, then, if the function is defined on this machine, it replies with OUTPUT=1. If the function is not defined, then the machine replies with OUTPUT=0, or with an error (invalid instruction code).

If the INPUT is set to 126 for these instructions, then, if possible, the machine will return the current setting of this function, even for the case that the function is not defined. For example, for a video switcher which always switches during the VIS of input #1, (and its VIS setting cannot be programmed otherwise), the reply to the HEX code

0A FE 80 81 (ie. request VIS setting, with INPUT set as 126dec)

would be HEX codes

4A FE 81 81 (ie. VIS setting = 1, which is defined as VIS from input #1).

NOTE 8 - The reply is as in TYPE 3 above, except that here the OUTPUT is assigned with the value 0 if the setup is not defined / no valid input is detected; or 1 if it is defined / valid input is detected.

NOTE 9 - An error code is returned to the PC if an invalid instruction code was sent to the switcher, or if a parameter associated with the instruction is out of range (e.g. trying to save to a setup greater than the highest one, or trying to switch an input or output greater than the highest one defined). This code is also returned to the PC if an RS-232 instruction is sent while the machine is being programmed via the front panel. Reception of this code by the switcher is not valid.

NOTE 10 - This code is reserved for internal use.



Kramer Protocol

NOTE 13 - This is a request to identify the switcher/s in the system. If the OUTPUT is set as 0, and the INPUT is set as 1, 2, 5 or 7, the machine will send its name. The reply is the decimal value of the INPUT and OUTPUT. For example, for a 2216, the reply to the request to send the audio machine name would be (HEX codes):

7D 96 90 81 (i.e. 128dec+ 22dec for 2nd byte, and 128dec+ 16dec for 3rd byte).

If the request for identification is sent with the INPUT set as 3 or 4, the appropriate machine will send its software version number. Again, the reply would be the decimal value of the INPUT and OUTPUT - the INPUT representing the number in front of the decimal point, and the OUTPUT representing the number after it. For example, for version 3.5, the reply to the request to send the version number would be (HEX codes):

7D 83 85 81 (i.e. 128dec+ 3dec for 2nd byte, 128dec+ 5dec for 3rd byte).

If the OUTPUT is set as 1, then the ASCII coding of the lettering following the machine's name is sent. For example, for the VS-7588YC, the reply to the request to send the first suffix would be (HEX codes):

7D D9 C3 81 (i.e. 128dec+ ASCII for "Y"; 128dec+ ASCII for "C").

NOTE 14 - The number of inputs and outputs refers to the specific machine which is being addressed, not to the system. For example, if six 16X16 matrices are configured to make a 48X32 system (48 inputs, 32 outputs), the reply to the HEX code

3E 82 81 82 (ie. request the number of outputs)

would be HEX codes

7E 82 90 82

ie. 16 outputs

NOTE 16 - The reply to the "REQUEST WHETHER PANEL IS LOCKED" is as in NOTE 4 above, except that here the OUTPUT is assigned with the value 0 if the panel is unlocked, or 1 if it is locked.

NOTE 19 - After this instruction is sent, the unit will respond to the ASCII command set defined by the OUTPUT byte. The ASCII command to operate with the HEX command set must be sent in order to return to working with HEX codes.

NOTE 24 - Further information needed in instructions 22 and 25, is sent using instruction 42 - which is sent prior to the instruction. For example, to request the audio gain value of output # 9, send hex codes

2A 81 80 81

and then send HEX codes

19 89 81 81.

To set input gain change mode, send hex codes

2A 80 80 81

and then send HEX codes

16

NOTE 25 - For units which detect the validity of the video inputs, Instruction 16 will be sent whenever the unit detects a change in the state of an input (in real-time).

For example, if input 3 is detected as invalid, the unit will send the HEX codes

10 83 84 81

If input 7 is detected as valid, then the unit will send HEX codes

10 87 85 81.

LIMITED WARRANTY

Kramer Electronics (hereafter *Kramer*) warrants this product free from defects in material and workmanship under the following terms.

HOW LONG IS THE WARRANTY

Labor and parts are warranted for seven years from the date of the first customer purchase.

WHO IS PROTECTED?

Only the first purchase customer may enforce this warranty.

WHAT IS COVERED AND WHAT IS NOT COVERED

Except as below, this warranty covers all defects in material or workmanship in this product. The following are not covered by the warranty:

1. Any product which is not distributed by Kramer, or which is not purchased from an authorized Kramer dealer. If you are uncertain as to whether a dealer is authorized, please contact Kramer at one of the agents listed in the Web site www.kramerelectronics.com.
2. Any product, on which the serial number has been defaced, modified or removed, or on which the WARRANTY VOID IF TAMPERED sticker has been torn, reattached, removed or otherwise interfered with.
3. Damage, deterioration or malfunction resulting from:
 - i) Accident, misuse, abuse, neglect, fire, water, lightning or other acts of nature
 - ii) Product modification, or failure to follow instructions supplied with the product
 - iii) Repair or attempted repair by anyone not authorized by Kramer
 - iv) Any shipment of the product (claims must be presented to the carrier)
 - v) Removal or installation of the product
 - vi) Any other cause, which does not relate to a product defect
 - vii) Cartons, equipment enclosures, cables or accessories used in conjunction with the product

WHAT WE WILL PAY FOR AND WHAT WE WILL NOT PAY FOR

We will pay labor and material expenses for covered items. We will not pay for the following:

1. Removal or installations charges.
2. Costs of initial technical adjustments (set-up), including adjustment of user controls or programming. These costs are the responsibility of the Kramer dealer from whom the product was purchased.
3. Shipping charges.

HOW YOU CAN GET WARRANTY SERVICE

1. To obtain service on you product, you must take or ship it prepaid to any authorized Kramer service center.
2. Whenever warranty service is required, the original dated invoice (or a copy) must be presented as proof of warranty coverage, and should be included in any shipment of the product. Please also include in any mailing a contact name, company, address, and a description of the problem(s).
3. For the name of the nearest Kramer authorized service center, consult your authorized dealer.

LIMITATION OF IMPLIED WARRANTIES

All implied warranties, including warranties of merchantability and fitness for a particular purpose, are limited in duration to the length of this warranty.

EXCLUSION OF DAMAGES

The liability of Kramer for any effective products is limited to the repair or replacement of the product at our option. Kramer shall not be liable for:

1. Damage to other property caused by defects in this product, damages based upon inconvenience, loss of use of the product, loss of time, commercial loss; or:
2. Any other damages, whether incidental, consequential or otherwise. Some countries may not allow limitations on how long an implied warranty lasts and/or do not allow the exclusion or limitation of incidental or consequential damages, so the above limitations and exclusions may not apply to you.

This warranty gives you specific legal rights, and you may also have other rights, which vary from place to place.

NOTE: All products returned to Kramer for service must have prior approval. This may be obtained from your dealer.

This equipment has been tested to determine compliance with the requirements of:

- EN-50081: "Electromagnetic compatibility (EMC);
generic emission standard.
Part 1: Residential, commercial and light industry"
EN-50082: "Electromagnetic compatibility (EMC) generic immunity standard.
Part 1: Residential, commercial and light industry environment".
CFR-47: FCC* Rules and Regulations:
Part 15: "Radio frequency devices
Subpart B Unintentional radiators"

CAUTION!

- Servicing the machines can only be done by an authorized Kramer technician. Any user who makes changes or modifications to the unit without the expressed approval of the manufacturer will void user authority to operate the equipment.
- Use the supplied DC power supply to feed power to the machine.
- Please use recommended interconnection cables to connect the machine to other components.
* FCC and CE approved using STP cable (for twisted pair products)





For the latest information on our products and a list of Kramer distributors, visit our Web site: www.kramerelectronics.com, where updates to this user manual may be found. We welcome your questions, comments and feedback.



Caution

Safety Warning:

Disconnect the unit from the power supply before opening/servicing.



PN: 2900-000540



Rev: 3

Kramer Electronics, Ltd.

Web site: www.kramerelectronics.com

E-mail: info@kramereel.com

P/N: 2900-000540 REV 3

Free Manuals Download Website

<http://myh66.com>

<http://usermanuals.us>

<http://www.somanuals.com>

<http://www.4manuals.cc>

<http://www.manual-lib.com>

<http://www.404manual.com>

<http://www.luxmanual.com>

<http://aubethermostatmanual.com>

Golf course search by state

<http://golfingnear.com>

Email search by domain

<http://emailbydomain.com>

Auto manuals search

<http://auto.somanuals.com>

TV manuals search

<http://tv.somanuals.com>