

GIGABIT ETHERNET DESKTOP SWITCH USER MANUAL

MODELS 530347
& 530378



Shown: Model 530347, 8-Port



INT-530347-UM-0308-02

Thank you for purchasing the INTELLINET NETWORK SOLUTIONS™ Gigabit Ethernet Desktop Switch, Model 530347 (8-port) or 530378 (5-port).

Perfect for the home or small office, this device's Gigabit Ethernet ports provide the high performance your network needs for handling the quick transfer speeds that support disk mirroring, data backup, graphics image file transfers and other bandwidth-intensive applications.

Auto features make it easy to use, too. No configuration is required, making installation Plug and Play and hassle free. Auto-MDI/MDI-X on all ports eliminates the need for crossover cables, and each port senses the link speed of any connected network device automatically, adjusting to 10, 100 or 1000 Mbps for compatibility and maximum performance.

Simple setup means you'll also soon be enjoying the benefits of these additional features:

- Full flow control support provides optimum performance
- Auto-learning of network configuration
- High performance, half and full duplex, with zero packet loss
- Rugged metal housing for maximum durability
- Supports jumbo frames up to 9.6 kBytes
- Supports up to 8,192 MAC address entries
- 144 kBytes buffer memory
- Lifetime Warranty

FCC Warning

This device has been tested and found to comply with limits for a Class B digital device, pursuant to Parts 2 and 15 of FCC Rules. These limits are designed to provide reasonable protection against harmful interference when the equipment is operated in a commercial environment. This equipment generates and radiates radio frequency energy and, if not installed and used in accordance with the user's manual, may cause interference, in which case the user will be required to correct such interference at his own expense.

CE Warning

This is a Class B product. In a domestic environment, this product may cause radio interference, in which case the user may be required to take adequate measures.

FRONT PANEL

LEDs



LED	Status	Operation
Power	On	Unit is receiving power.
	Off	Unit is not receiving power.
LINK/ACT	On	Corresponding port is connected.
	Off	Corresponding port is not connected.
	Flashing	Corresponding port is transmitting/receiving data.
100/1000 Mbps	On	Port is transmitting/receiving data at high speed.
	Off	Port is transmitting/receiving data at low speed.

REAR & SIDE PANELS

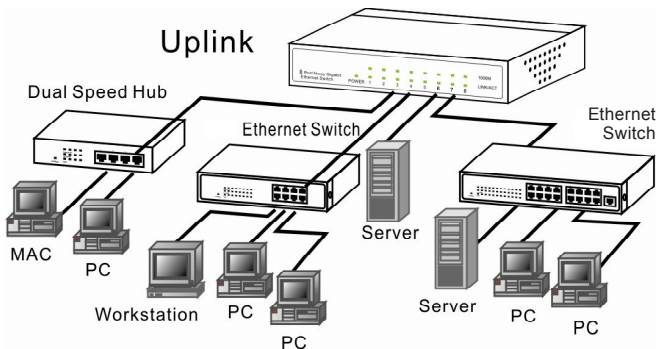
Power

Power to the Gigabit Ethernet Desktop Switch is supplied by connecting the included external DC power adapter to the DC input jack on the rear panel.



Switch/Hub/PC and Other Network Connections

The Gigabit Ethernet Desktop Switch provides automatic crossover detection for all ports, so it's ready for connection to other switches, hubs, PCs, servers and such without the need for crossover cable.



SPECIFICATIONS

Standards

- IEEE 802.3 (10Base-T Ethernet)
- IEEE 802.3u (100Base-TX Fast Ethernet)
- IEEE 802.3ab (Gigabit Ethernet)
- IEEE 802.3x (Flow Control & Backpressure)

General

- ANSI/IEEE 802.3 NWay auto-negotiation
- Non-blocking, store and forward switching architecture
- Backpressure flow control for half duplex mode on 10/100 Mbps ports
- Connectors: 10/100/1000 Mbps RJ-45 ports (Model 530347: 8; Model 530378: 5)
- Switch architecture: store and forward switch technology
- Network cables:
 - 10Base-T: Cat3, 4, 5 UTP/STP
 - 100Base-TX: Cat5 UTP/STP
 - 1000Base-T: Cat5e UTP/STP
- Certifications: FCC Class B, CE Mark, RoHS

Performance

- Filter/forward rate
 - 10BaseT: 14,880 pps (packets per sec.)
 - 100Base-TX: 148,800 pps (packets/sec.)
 - 1000Base-T: 1,480,000 pps (packets/sec.)
- MAC address table: 8,192 entries
- Buffer size:
 - Model 530347: 144 kBytes
 - Model 530378: 112 kBytes
- Jumbo frame support: 9.6 kB

LEDs

- Power
- LINK/ACT for each 10/100/1000 Mbps port
- 1000 Mbps Link

Power

- DC input: 7.5 V, 0.8 A
- Power consumption:
 - Model 530347: 12 Watts (maximum)
 - Model 530378: 10 Watts (maximum)

Environmental

- Metal housing, desktop size
- Dimensions:
 - Model 530347: 130 x 97 x 25 (WxLxH) mm (5.1 x 3.0 x 1.0 in.)
 - Model 530378: 30 x 77 x 25 (WxLxH) mm (5.1 x 3.8 x 1.0 in.)
- Weight:
 - Model 530347: 0.35 kg (0.8 lbs.)
 - Model 530378: 0.28 kg (0.6 lbs.)
- Operating temp.: 0 – 55°C (32 – 131°F)
- Operating humidity: 10 – 90% RH, non-condensing
- Storage temp.: -20 – 90°C (-4 – 194°F)

Package Contents

- Gigabit Ethernet Desktop Switch
- External power adapter
- User manual



INTELLINET™

N E T W O R K S O L U T I O N S

INTELLINET NETWORK SOLUTIONS™ offers a complete line of active and passive networking products.

Ask your local computer dealer for more information or visit

www.intellinet-network.com

Copyright © INTELLINET NETWORK SOLUTIONS

All products mentioned are trademarks or registered trademarks of their respective owners.

Free Manuals Download Website

<http://myh66.com>

<http://usermanuals.us>

<http://www.somanuals.com>

<http://www.4manuals.cc>

<http://www.manual-lib.com>

<http://www.404manual.com>

<http://www.luxmanual.com>

<http://aubethermostatmanual.com>

Golf course search by state

<http://golfingnear.com>

Email search by domain

<http://emailbydomain.com>

Auto manuals search

<http://auto.somanuals.com>

TV manuals search

<http://tv.somanuals.com>