

Portable & Transportable Concentrators

XPO2™ and SOLO2™



Yes, you can.

Parts Catalog Usage Guide

The information contained in this document is subject to change without notice. This catalog contains service parts for Form No. 09-084. If you have any questions regarding this catalog, please contact one of our Customer Service Representatives.

For Customer Service Support Call:

1-800-333-6900

For Faxed In Orders Call:

1-800-678-4682 or

1-440-366-0709

For Technical Service Call:

1-800-832-4707

Literature Can Be Found at:

www.invacare.com or

1-800-828-6272

SYMBOL DEFINITION

Throughout this catalog you will notice letters to draw your attention to specific footnotes which are located at the bottom of the page or below specified charts.

Examples:

A,B,C etc. = Special Comments

NOTE: = General information pertaining to that specific page

NLA = No Longer Available

HARDWARE MEASUREMENTS

The measurements for the hardware will be listed as follows:

Screws, Bolts Diameter X Thread Count/Pitch X Length

Washers Inside Diameter X Outside Diameter X Thickness

Spacers Inside Diameter X Outside Diameter X Length

For your convenience, we have supplied an area for you to list your Invacare Representatives.

Name	Phone Numbers

© 2013 Invacare Corporation, Elyria, Ohio. Invacare, the Medallion Design, Yes, you can. are registered trademarks of the Invacare Corporation. XPO2 and SOLO2 are trademarks of Invacare Corporation. Palnut is a registered trademark of Transtechnology Corporation. Tygon is a registered trademark of Norton Company. Information is subject to change without notification.

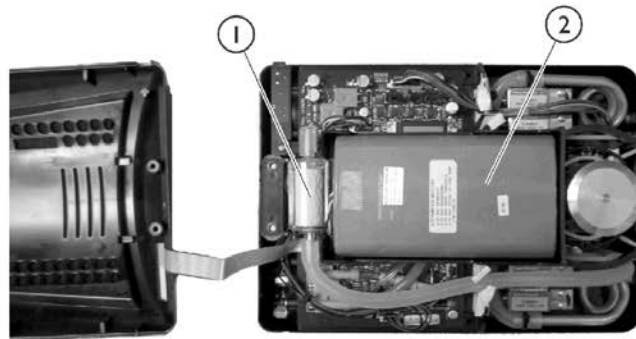
TABLE of CONTENTS

Description	Page Number
Packaging & Literature	3
SOLO2 Transportable Concentrator	6
XPO2 Portable Concentrator	4

Packaging and Literature

Item Number	Note	Part Number	Description	Quantity Per	
				Package	Assembly
	A	1148112	Owner's Manual, XPO2	1	1
	A	1156872	Owner's Manual, SOLO2	1	1
	B,A	1165490	Carton w/ Inserts	1	1
	D,A	1163886	Carton Assembly	1	1
	A	1163220	Guide, Quick Reference, SOLO2	1	1
	C,A	1156874	Instruction Sheet, Cart	1	1
	E,A	1168369	Label, Over Laminate, Clear Mylar	1	1
<p>NOTE: A - Not Shown. B - Used for XPO2 model. Carton Assembly includes the Inner Carton, Carton Cardboard with Foam and Tray with Foam Insert C - Used for SOLO2 model. D - Used for XPO2 and SOLO2. Includes Carton w/ Handles, Foam Inserts and Carton Tray. E - Used for XPO2 model.</p> <p>NOTE: When adjusting or replacing parts, refer to your Owner's Manual for assistance.</p>					

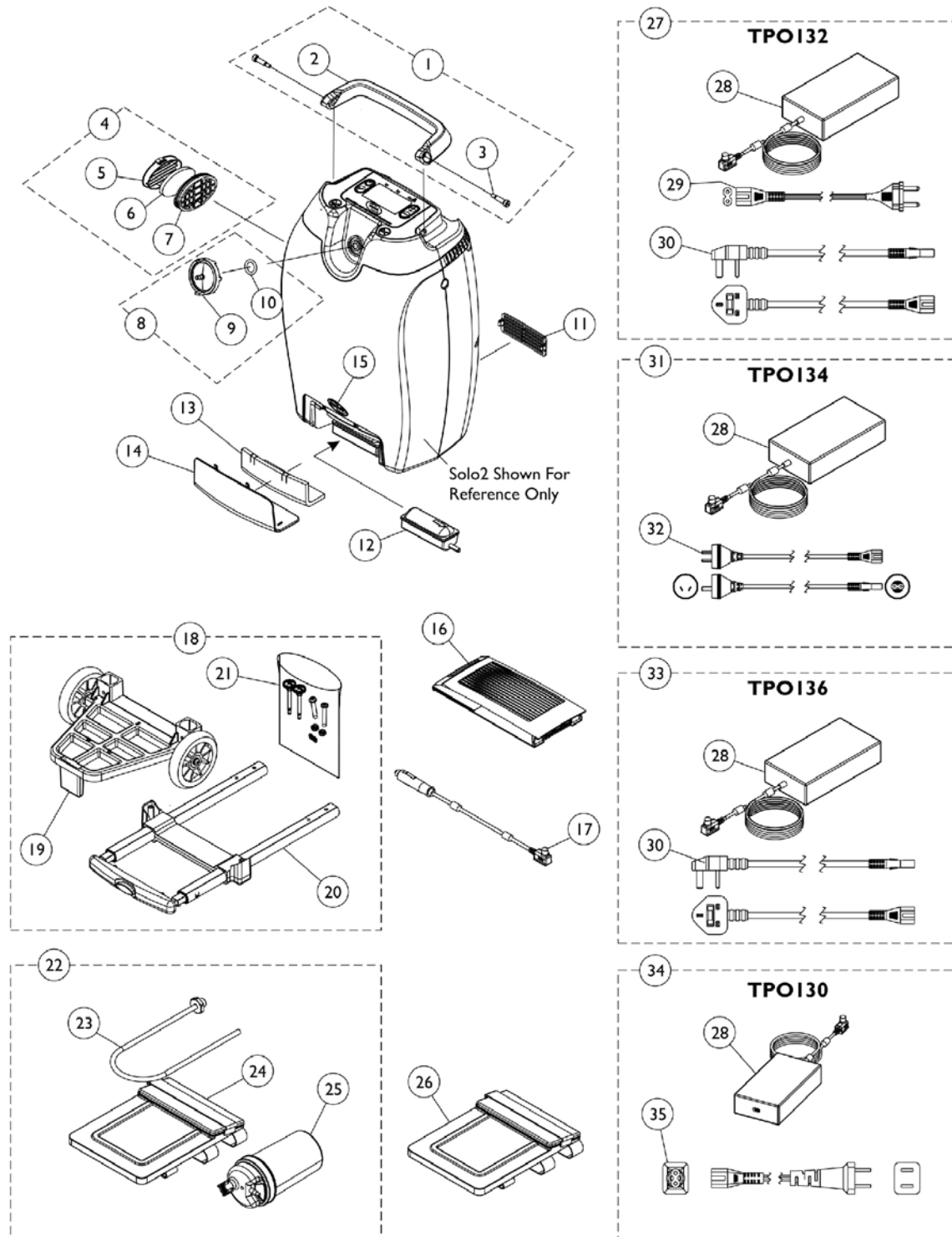
XPO2 Portable Concentrator



XPO2 Portable Concentrator

Item Number	Note	Part Number	Description	Quantity Per	
				Package	Assembly
1	A	1157693	Kit, Inlet Filter	1	1
			Filter, Inlet	1	1
			Seal, Notice	1	1
2	B	1157695	Kit, Battery	1	1
			Internal Battery Pack Assembly	1	1
			Instruction Sheet, Battery	1	1
3		1152790	Cover, Filter	1	1
4		1157692	Package, Gross Particle Filters	10	1
5		XPO130	Adapter, AC/DC Plug	1	1
6		XPO150	Carry Bag Assembly	1	1
7		1154103	Strap, Shoulder Bag	1	1
8	C	1163456	Package, Label, FAA	100	1
9	D	XPO140	Adaptor, DC/DC, Car	1	1
		1157694	Kit, Pad w/ Seal	1	1
			Seal, Notice	1	1
10		1151852	Pad, Thermally Conductive (1/8")	1	1
			Pouch, External Battery	1	1
<p>NOTE: A - Kit includes the Inlet Filter and Notice Seal B - Kit includes the Internal Battery Pack Assembly and Instruction Sheet C - As of 5/1/2009 all XPO2 concentrators have an FAA Approved label attached to the unit when it is shipped D - Pad is not shown, it is located under the Internal Battery. When replacing pad you will need to replace the Notice Seal on the unit as well.</p>					

SOLO2 Transportable Concentrator



SOLO2 Transportable Concentrator

Item Number	Note	Part Number	Description	Quantity Per	
				Package	Assembly
1	A	1164371	Kit, Handle with Hardware	1	1
2			Handle	1	1
3			Screw, Socket Head (1/4 x 3/4")	1	2
4	B	1156861	Inlet Vent Assembly	1	1
5			Cover, Inlet Vent	1	1
6			Filter, Inlet	1	1
7			Vent, Inlet	1	1
6		1165095	Package, Inlet Filter	10	1
8	C	1182068	Kit, Patient Outlet Filter	1	1
9			Outlet, Firestop Fitting	1	1
10			O-Ring (19/32 x 7/8 x 1/8")	1	1
11		1156867	Vent, Exhaust	1	1
12		1157083	Filter, Inlet, Compressor	1	1
13		1156844	Foam Insert, Inlet Filter Compressor Door	1	1
14		1156856	Door, Inlet Filter Compressor	1	1
15		1090146	NLA - Decal, Invacare 3-D Logo (1-19/32" L)	1	1
16	D	TPO110	Kit, Battery	1	1
17		TPO140	Adapter, DC/DC, Car	1	1
18	E	TPO120	Kit, Cart Replacement	1	1
19			Base, Cart	1	1
20			Handle, Cart	1	1
21			Hardware, Cart Assembly	1	1
			Instruction Sheet, Cart	1	1
	H,M	1163196	Instruction Sheet, Cart, International	1	1
21	G	1157046	Hardware, Cart Assembly	1	1
22	F	TPO170	Kit, Humidifier Bottle, Adapter and Accessory Bag	1	1
23			Adapter, Humidifier Bottle	1	1
24			Bag, Accessory	1	1
25			Bottle, Humidifier	1	1
23		1165381	Adapter, Humidifier Bottle	1	1
26		TPO160	Bag, Accessory	1	1
27	I	TPO132	Kit, Adapter, AC/DC Power Plug, EU	1	1
28			Adapter, AC/DC Power Plug	1	1
29			Power Cord, Line, 2P, Europe	1	1
30			Power Cord, Line, 2P, United Kingdom	1	1
31	J	TPO134	Kit, Adapter, AC/DC Power Plug, Australia	1	1
28			Adapter, AC/DC Power Plug	1	1
32			Power Cord, Line, 2P, Australia	1	1
33	K	TPO136	Kit, Adapter, AC/DC Power Plug, United Kingdom	1	1
28			Adapter, AC/DC Power Plug	1	1
30			Power Cord, Line, 2P, United Kingdom	1	1
34	N	TPO130	Kit, Adapter, AC/DC Power Plug	1	1
28			Adapter, AC/DC Power Plug	1	1
35			Power Cord, Line, 2P, United States	1	1

SOLO2 Transportable Concentrator

Item Number	Note	Part Number	Description	Quantity Per	
				Package	Assembly
29		1152805	Power Cord, Line, 2P, Europe	1	1
30		1160791	Power Cord, Line, 2P, United Kingdom	1	1
32		1160792	Power Cord, Line, 2P, Australia	1	1
35		1151816	Power Cord, Line, 2P, United States	1	1
	L,M	1165085	Kit, Labels, Product Overlay	1	1
	L,M	1165086	Kit, Labels, Battery Overlay	1	1
	L,M	1164926	Kit, Labels, Top Overlay	1	1
	L,M	1167619	Kit, Labels, Warning Do Not Ship	1	1
	L	1159909	Label, FAA Transport	1	1
	M	1179328	Kit, Label, Solo2 Control Panel (USA)	1	1
			Instruction Sheet, Label, Solo2 Control Panel (USA)	1	1
			Label, Control Panel, Solo2 (USA)	1	1
<p>NOTE: A - Kit includes items 2 and 3 B - Kit includes items 5-7 C - Kit includes items 9 and 10 D - Kit includes the Battery Box with (3) Battery Packs inside. Individual Battery Packs are non-serviceable. E - Kit includes items 19-21 and Instruction Sheet. The International Instruction Sheet is not included F - Kit includes items 23-25 G - Hardware includes (2) ea. #8-32 Retainer Washers, (2) ea. Cart Thumb Screws, (2) ea. Phillips Button Head Screws and (2) ea. 1/4-20 Locknuts H - Languages contained in the Cart Instruction Sheet are English, Italian, Dutch, French, German, Spanish, Norwegian, Swedish, Danish, Portuguese, Greek I - Includes items 28-30 J - Includes items 28 and 32 K - Includes items 28 and 30 L - Languages contained in kit are Italian, Dutch, French, German, Spanish, Norwegian, Swedish, Danish, Portuguese, Greek M - Not Shown N - Includes items 28 and 35.</p>					

Invacare Corporation

www.invacare.com



One Invacare Way
Elyria, Oh USA
44036-2125
800-333-6900

Technical Support
800-832-4707
Customer Service
800-333-6900

Literature Orders
800-333-6900

© 2013 Invacare Corporation. All rights reserved. Republication, duplication or modification in whole or in part is prohibited without prior written permission from Invacare. Trademarks are identified by ™ and ®. All trademarks are owned by or licensed to Invacare Corporation or its subsidiaries unless otherwise noted. (Revised 06/13/13)

Form No. 09-084

Free Manuals Download Website

<http://myh66.com>

<http://usermanuals.us>

<http://www.somanuals.com>

<http://www.4manuals.cc>

<http://www.manual-lib.com>

<http://www.404manual.com>

<http://www.luxmanual.com>

<http://aubethermostatmanual.com>

Golf course search by state

<http://golfingnear.com>

Email search by domain

<http://emailbydomain.com>

Auto manuals search

<http://auto.somanuals.com>

TV manuals search

<http://tv.somanuals.com>