

Wireless-G PC Card

GWP512 Quick Start Guide

Read this guide thoroughly and follow the installation and operation procedures carefully to prevent any damage to the unit and/or any of the devices it connects to.

GWP512 package contains:
1 802.11g Wireless-G PC Card
1 Installation & Manual CD
1 Quick Start Guide
1 Warranty/Registration Card

Copyright © 2004 IOGEAR®
All brand names and trademarks are the registered property of their respective owners

PKG-M0109/QS



1. Welcome

Thank you for choosing IOGEAR® to serve your wireless needs. In no time you will be sharing files or surfing the Internet wirelessly. We hope you will have as much fun using your IOGEAR® Wireless-G PC Card, as we had designing it.

Rest assured, your IOGEAR® Wireless-G PC Card is built rock-solid to ensure maximum up-time for you to stay up-and-running. If for any reason you have a problem, we stand behind our products with an industry-leading 3 year factory warranty, so you can have peace-of-mind with your current and future IOGEAR® purchases.

We want you to be happy with your purchase, so we have made every effort to ensure product quality, reliability, and ease-of-use.

Note:
Your order has been carefully packaged and inspected, and we hope you are pleased with the IOGEAR® product you purchased. Please inspect the contents of the package to ensure that you have received all items and that nothing has been damaged. If you discover a problem, please contact your dealer immediately for assistance.

Contact Information:

949-453-8782
23 Hubble
Irvine, CA 92618
USA
www.iogear.com
support@iogear.com

2. System Requirements & Features

System Requirements:

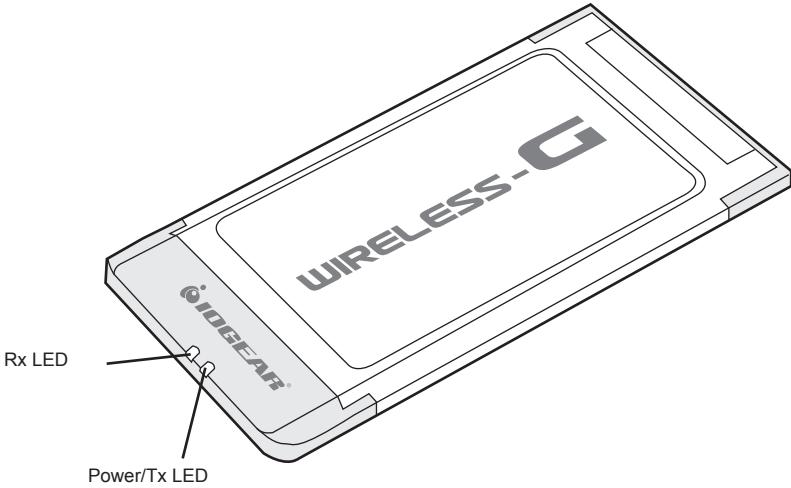
- Pentium® class notebook computers with at least one available Cardbus slot
- Microsoft® Windows® 98SE, ME, 2000, XP
- CD-ROM drive

Features:

- 54 Mbps wireless connection speed - up to five times faster than previous 802.11b technology
- Sleek, compact antenna is designed for maximum agility
- Includes Funk software Odyssey client to support strong WLAN security protocols, such as EAP-TTLS, EAP-PEAP, EAP-TLS, and LEAP.
- Ultra-easy installation in just a few simple steps

3. Hardware Diagram

When the adapter card is not associated with any wireless network devices, the Power/Tx LED will stay solid green; Rx LED will be off. When both LEDs are blinking green, the adapter card is scanning/connecting to a wireless network. When the adapter card is associated, Power/Tx LED indicates transmitting activity; Rx LED indicates receiving activity.



4. Installation

Driver Installation

If you have connected the notebook adapter to your computer, please remove it first.

Step. 1

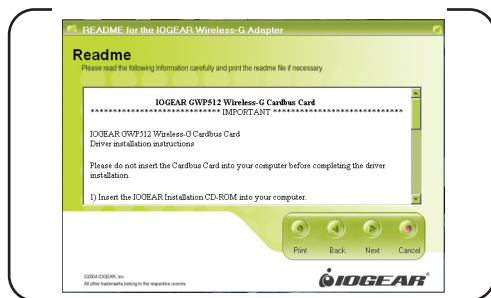
Insert the Driver and Utility CD into CD Drive.

Step. 2

A series of introduction screens will show up. It runs on Macromedia Flash. (If your computer doesn't have the Flash player installed, please visit www.macromedia.com to download the plug-in.)

Step. 3

Next, a Read Me screen will be brought up. Please read it through carefully, then click **Next**.



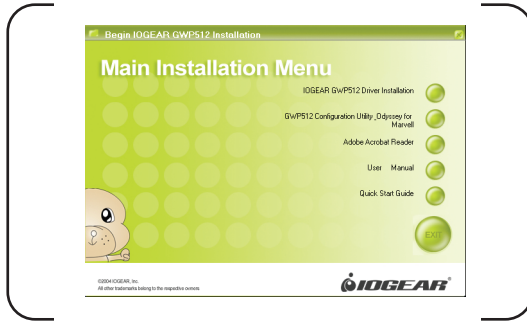
Step. 4

Click the button of "I accept the terms in the license agreement". Click **Next**.



Step. 5

A Main Installation Menu will show.



Step. 6

Click the button of **IOGEAR GWP512 Driver Installation**. When it is completed, an information window will pop up. Please click **OK**, then it will return to main menu.



You can install the Utility Software by following instructions in section 6

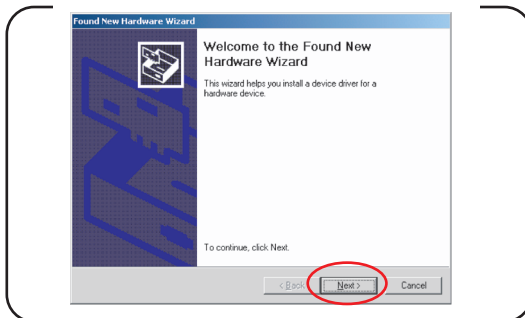
Installing the Network Adapter Driver

Note: The following procedures are operated in Windows 2000. The steps and screen shots are similar for the other supported OS (such as Win 98SE, ME and XP).

Step. 1

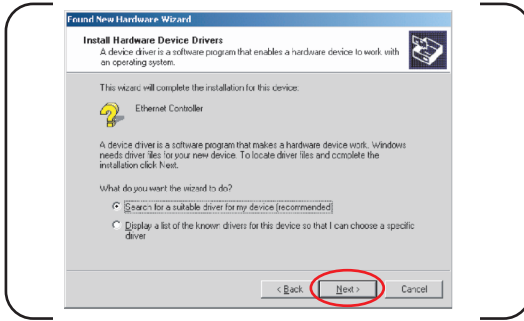
Now, please insert your card into your laptop.

When Windows 2000 recognizes the adapter, the **Found New Hardware Wizard** dialog box appears. Click **Next**.



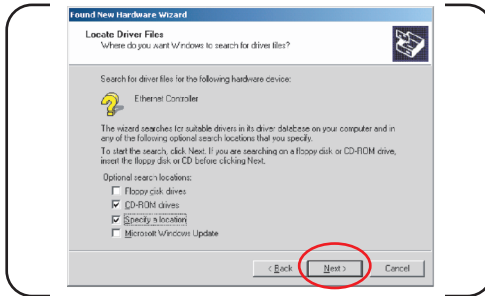
Step. 2

Select the **Search for a suitable driver for my device** and click **Next**.



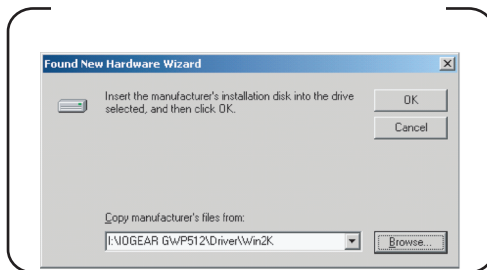
Step. 3

Select the **Specify a location** checkbox. Click **Next**.



Step. 4

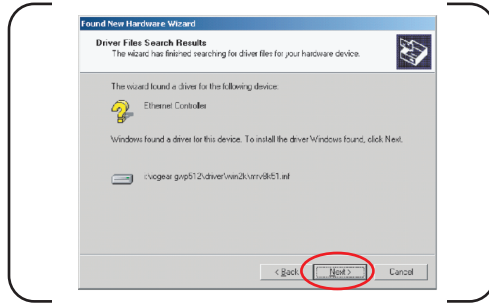
Click **Browse** button, browse to the IOGEAR GWP512\Driver\Win2k directory and click **OK**.



Note: Windows 98SE users, please specify to IOGEAR GWP512\Driver\Win98 directory, Windows ME users, please specify to IOGEAR GWP512\Driver\WinME directory, Windows XP users, please specify to IOGEAR GWP512\Driver\WinXP directory.

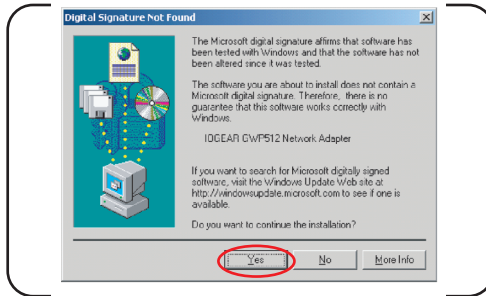
Step. 5

The wizard will display the location of driver. Click on the **Next** button.



Step. 6

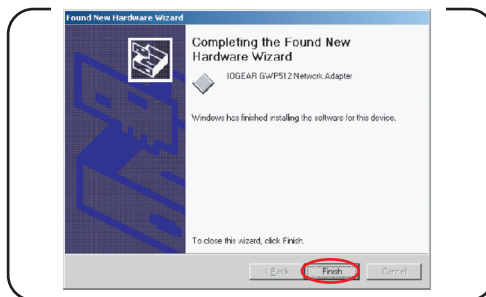
The **Microsoft Digital Signature Not Found** dialog box could appear at this point in the installation. A Microsoft digital signature is not required for the driver installation. Click **Yes** to continue. In Windows XP, please click **Continue Anyway**.




Note: Windows98SE users, you will be asked to provide the Windows98 source files CD, please insert the CD and follow on-screen description to continue the driver installation.

Step. 7

After a while, the wizard will report that the hardware installation is complete. Click **Finish**.



Step. 8

After all the necessary drivers are installed, you can find that a PCMCIA adapter icon  on the system tray and the Power LED on the adapter showing steady green.

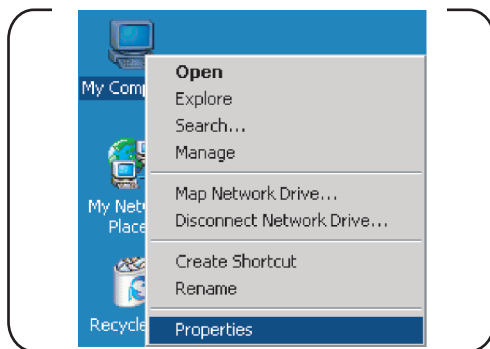
Note: Windows 98SE & ME users, you will be asked to restart your computer. Please click **Yes** to reboot your computer.

5. Verify the Driver Installation

Note: The following procedures are operated in Windows 2000. The steps and screens are similar for the other supported O.S. If you want to check whether the driver's installation is successful, please follow the following steps.

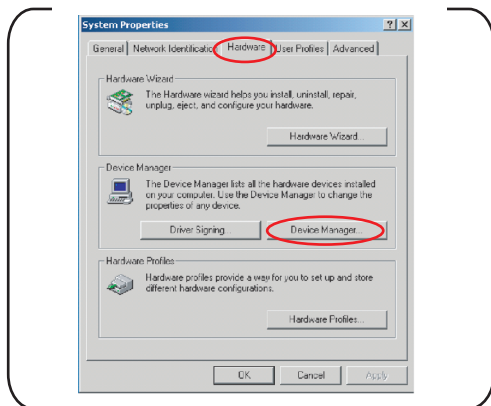
Step. 1

Right-click mouse button on the **My Computer** icon on your Windows desktop, and highlight **Properties** from the pop-up menu.



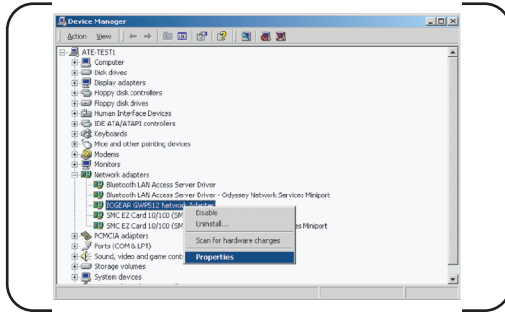
Step. 2

The **System Properties** screen will be pop-up. Under **Hardware** tab, click **Device Manager**....



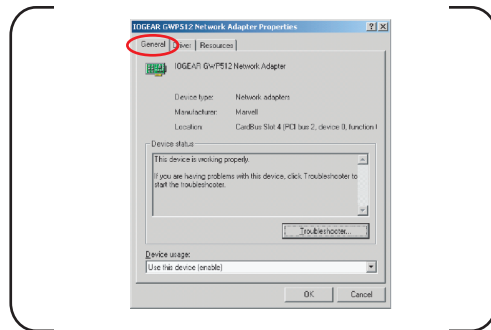
Step. 3

After clicking **Device Manager...**, the following screen will be shown. Click on the + symbol in front of **Network adapters** and see if an item labeled **IOGEAR GWP512 Network Adapter** is visible. If you don't see the item below the network adapter icon but a "?" or "!" symbol is displayed, it means that the driver installation was unsuccessful. Highlight **IOGEAR GWP512 Network Adapter**, right-click mouse button and select **Properties**.



Step.4

Click the **General** tab, if the Device Status field reports that **This device is working properly**, it means that the driver has been installed successfully.

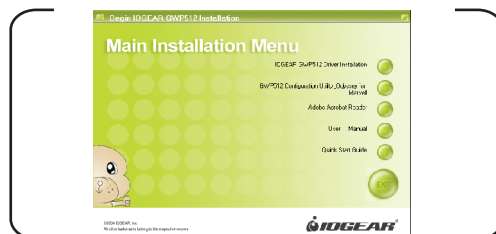


6. Installations of Configuration Utility and Odyssey for Marvell Utility

This Network Adapter Configuration Utility and Odyssey for Marvell Utility are contained in the utility CD we provide. The Odyssey for Marvell Utility will be installed after the completion of Configuration Utility. The installation procedure is the same for all support O.S except the screenshots. The following procedure is operated in Windows 2000.

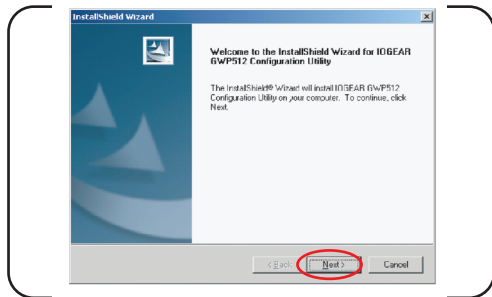
Step. 1

From the Main Installation Menu, select the button of **GWP512 Configuration Utility -- Odyssey from Marvell**.



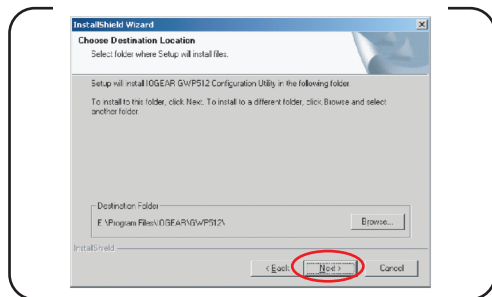
Step. 2

The InstallShield Wizard is preparing to install the configuration utility. Click **Next**.



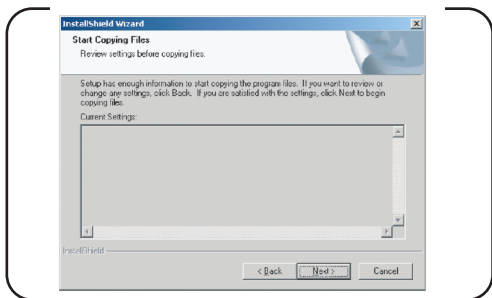
Step. 3

In the **Destination Folder** screen you are asked to confirm the **Destination Folder** for the application software. If you would like, you may change the destination folder to another location as the directory. Click **Next**.



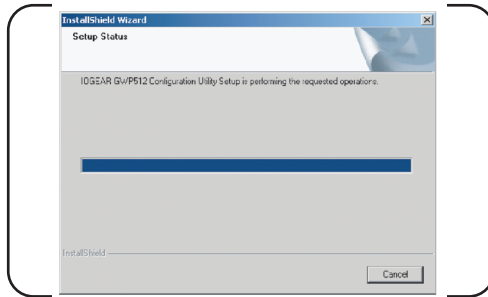
Step. 4

Select a program folder and click **Next**.



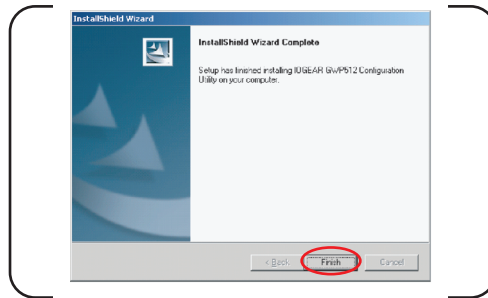
Step. 5

The InstallShield Wizard is installing utility.



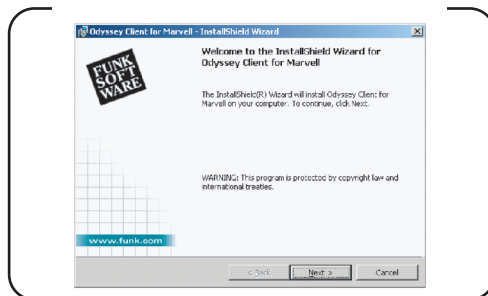
Step. 6

Click **Finish** to complete the Utility installation.



Step. 7

The InstallShield Wizard continues to install the Odyssey Client for Marvell helps the user to configure WPA function. The Odyssey Client Installation Wizard window appears. Click **Next**. If the user doesn't want to install the Odyssey for Marvell Utility, he can click **Cancel** to terminate the installation.



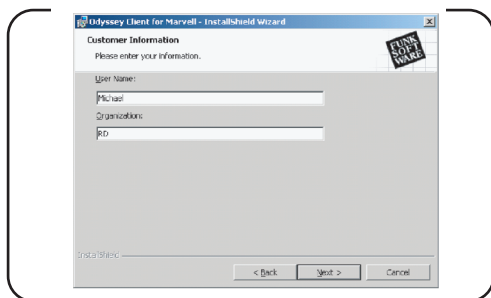
Step. 8

Click the button of I accept the terms in the license agreement. Click **Next**.



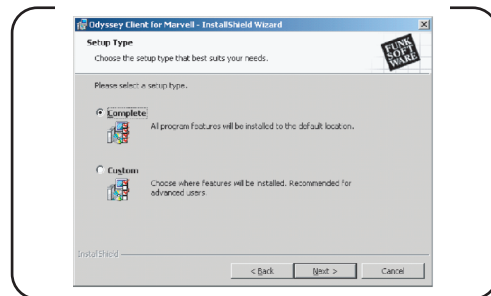
Step. 9

Enter User Name and Organization in the Customer Information window. Click **Next**.



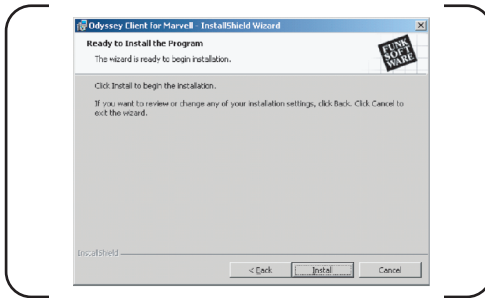
Step.10

Click the button of Complete. Click **Next**.



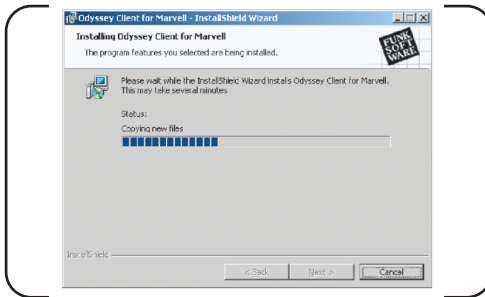
Step. 11

Click **Install** to install the program.



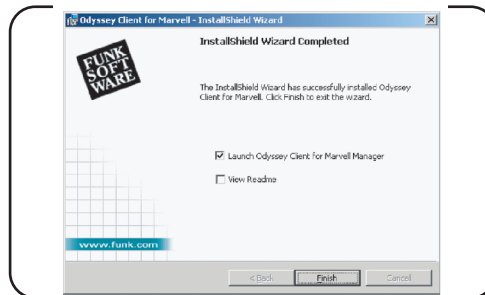
Step. 12

The InstallShield Wizard starts copy files to PC.



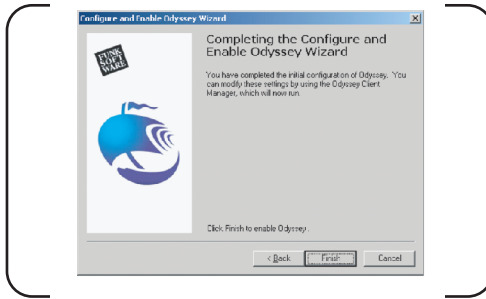
Step. 13

When installation is complete, the Wizard Completed window appears. Click **Finish**.



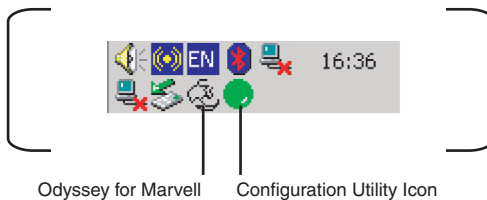
Step. 14

The Configuration Wizard window appears. Click **Next**. Then Click **Finish** to complete the configuration Wizard.



Step. 15

The Odyssey Client for Marvell icon resides on the system tray automatically. If the network adapter is plugged into a slot and connects with a wireless network, the Configuration Utility launches automatically and has an icon shows green in the system tray. If it doesn't launch, and you cannot get wireless connection, please see below to launch the Configuration Utility.



7. Configuration Utility (Please refer to User Manual for further details)

7.1 Using the configuration utility IOGEAR provides in Windows 98/ME/2000/XP

Step. 1

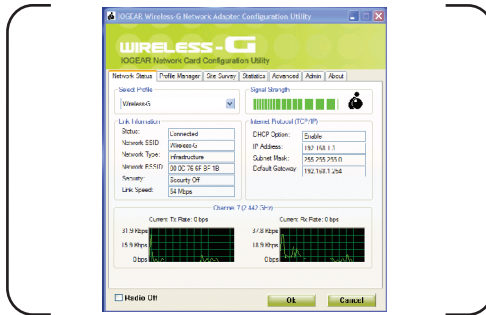
The user can open the Configuration Utility from Windows **Start -> Programs -> IOGEAR GWP512 -> IOGEAR GWP512 Configuration Utility**.

After you launch the utility, the utility icon will reside on the Windows system tray and provides at-a-glance feedback about the device's status by changing appearance. Right-click mouse button on the icon and select **Restore** from the shortcut menu. The configuration main window will be shown on screen.



Step. 2

The user can now use any of the management functions available in the Configuration Utility.



7.2 Using the zero configuration utility Windows XP provides (Please refer to User's Manual for more details on the configuration utility)

Once you have the network adapter properly installed, you will see the network connection icon shown below.

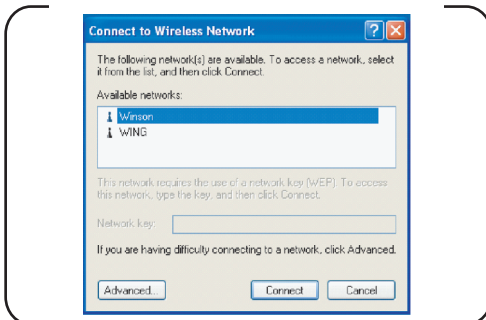
Step. 1

Right-click mouse button on the network connection icon resides on the system tray, and click **View available Wireless Networks**.



Step. 2

The following **Connect to Wireless Network** dialog box will be displayed. You can click **Connect** to start the wireless connection or click **Advanced** button to do further configurations.



8. Radio and TV Interference

This equipment has been tested and found to comply with the limits for a Class B digital device, pursuant to Part 15 of the FCC Rules. These limits are designed to provide reasonable protection against harmful interference in a residential installation. This equipment generates, uses and can radiate radio frequency energy and if not installed and used in accordance with the instructions, may cause harmful interference to radio communications. However, there is no guarantee that interference will not occur in a particular installation

IN NO EVENT SHALL THE DIRECT VENDOR'S LIABILITY EXCEED THE PRICE PAID FOR THE PRODUCT FROM DIRECT, INDIRECT, SPECIAL, INCIDENTAL, OR CONSEQUENTIAL DAMAGES RESULTING FROM THE USE OF THE PRODUCT, DISK OR ITS DOCUMENTATION.

The direct vendor makes no warranty or representation, expressed, implied, or statutory with respect to the contents or use of this documentation, and especially disclaims its quality, performance, merchantability, or fitness for any particular purpose.

The direct vendor also reserves the right to revise or update the device or documentation without obligation to notify any individual or entity of such revisions, or update. For further inquiries, please contact your direct vendor.

9. Limited Warranty

IN NO EVENT SHALL THE DIRECT VENDOR'S LIABILITY FOR DIRECT, INDIRECT, SPECIAL, INCIDENTAL OR CONSEQUENTIAL DAMAGES RESULTING FROM THE USE OF THIS PRODUCT, DISK, OR ITS DOCUMENTATION EXCEED THE PRICE PAID FOR THE PRODUCT.

The direct vendor makes no warranty or representation, expressed, implied, or statutory with respect to the contents or use of this documentation, and especially disclaims its quality, performance, merchantability, or fitness for any particular purpose.

The direct vendor also reserves the right to revise or update the device or documentation without obligation to notify any individual or entity of such revisions, or updates. For further inquiries please contact your direct vendor.

Free Manuals Download Website

<http://myh66.com>

<http://usermanuals.us>

<http://www.somanuals.com>

<http://www.4manuals.cc>

<http://www.manual-lib.com>

<http://www.404manual.com>

<http://www.luxmanual.com>

<http://aubethermostatmanual.com>

Golf course search by state

<http://golfingnear.com>

Email search by domain

<http://emailbydomain.com>

Auto manuals search

<http://auto.somanuals.com>

TV manuals search

<http://tv.somanuals.com>