

1-port USB 2.0 Print Server

Manual (GPSU21)



©2006 IOGEAR. All Rights Reserved. Part No. M0374

IOGEAR, the IOGEAR logo, is trademarks or registered trademarks of IOGEAR, Inc. Microsoft and Windows are registered trademarks of Microsoft Corporation. IBM is a registered trademark of International Business Machines, Inc. Macintosh, G3/G4 and iMac are registered trademarks of Apple Computer, Inc. IOGEAR makes no warranty of any kind with regards to the information presented in this document. All information furnished here is for informational purposes only and is subject to change without notice. IOGEAR, Inc. assumes no responsibility for any inaccuracies or errors that may appear in this document.

Thank you for purchasing this 1-port USB 2.0 Print Server that allows any networked computer to share a USB printer. It complies with USB 2.0 specifications (and is backward compatible with USB 1.1), and provides an auto-sensing Ethernet port that works with either 10Base-T or 100Base-T networks. This unit also supports multiple protocols and multiple operating systems, and it integrates Internet Printing Protocol (IPP) to allow users to print from anywhere using the internet. The built-in web management feature provides more convenience by allowing the user to configure, monitor and even reset the print server via a web browser. This eliminates the need to place the printer right next to the computer. Print jobs can be sent to a printer in another country just as easily as to a printer in the same office. Why bother sending a degraded fax image while you can print an original at the destination?

We hope that you will enjoy using your Print Server and find it to be a useful solution.

Table of Contents

Package Contents	5
Features	6
System Requirements	7
Hardware Installation.....	8
Software Installation - Windows.....	9
Software Installation - Mac	16
Software Installation – IPP	18
Technical Support.....	21
Warranty	22

Package Contents

This package should contain:

- USB 2.0 Print Server
- CAT5 Patch Cable
- Power Adapter
- Installation CD
- User Manual
- Warranty/Registration Card

If any items are damaged or missing, please contact your dealer.

Features

- Easily connects your USB printer to a network
- Allows multiple computers to share one USB printer on the network
- Print from any computer on your network or from across the Internet
- Supports DHCP Client and multiple network protocols
- 10Base-T/100Base-T auto-sensing
- Supports Telnet and Web Management software

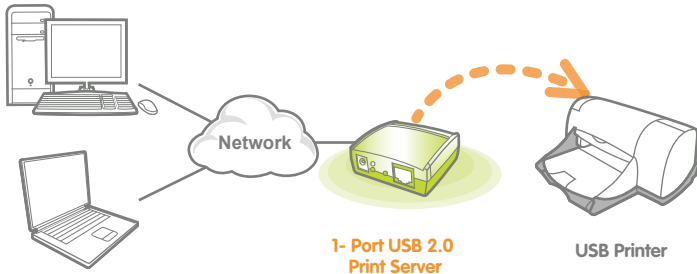
System Requirements

This USB 2.0 print server supports:

- Windows 98SE/ME/2000/XP/2003
- Mac OS 9.22 or later
- Unix/Linux
- Printer with a USB connection

Hardware Installation

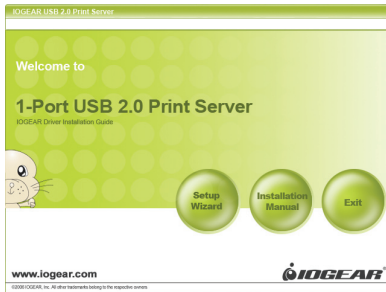
1. Connect a USB cable from the printer to the USB port on the print server.
2. Connect one end of the ethernet patch cable to the ethernet port on the print server.
3. Connect the other end of the ethernet cable to the network. It can be plugged into a router, ethernet switch/hub, or bridge.
4. Connect the Power adapter to the print server.



Software Installation - Windows

Software Installation - Windows

1. Insert the Setup CD into your computer.
The setup utility should launch automatically. If it does not, browse to your CD drive and launch the autorun.exe file from the CD. Click the **Setup Wizard** option from the main menu.

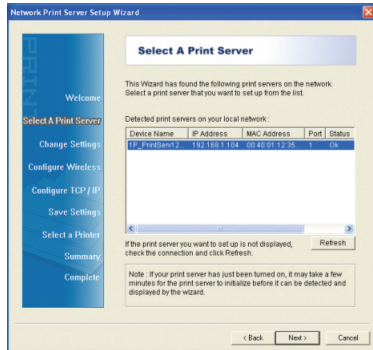


2. A wizard will step you through the entire process on Windows computers. Click **Next** to continue.



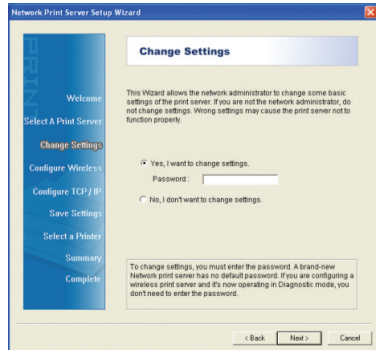
Software Installation - Windows

- The wizard will scan your network for the print server and display the results in a list. If no server is found, disable all firewall software and any extra network cards (such as a wireless adapter) on your computer except the one the print server is on and click **Refresh** to search again. Click **Next** when you have found and selected your print server in the list.



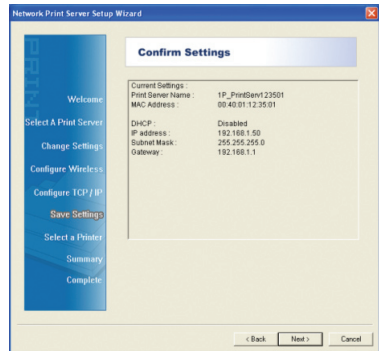
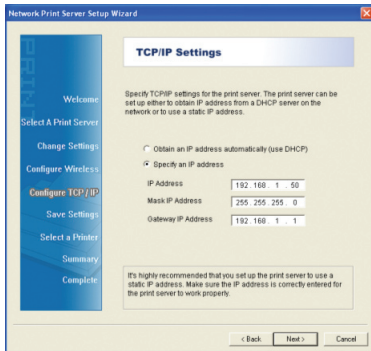
Software Installation - Windows

4. Changing the network settings of the print server to a fixed IP address is not necessary but will provide more stability in the event of a power outage, and can be useful if you are setting up IPP to print over the internet. Click **Next** and skip to step 7 if you do not need to specify an IP address, otherwise select the option to change settings (no password is needed by default) and then click **Next**.



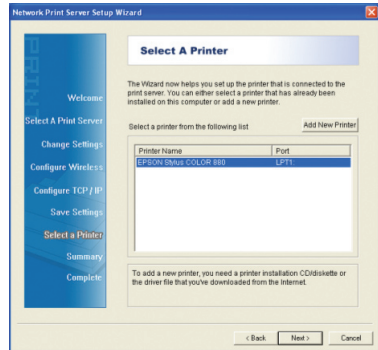
Software Installation - Windows

- Here you can specify the network settings the print server will use. If you will be printing from the internet, it is important that the Gateway IP Address is set to the IP of your router. Click **Next** to continue.
- Review the settings you have entered carefully and click **Next** to confirm that they are correct and save them to the print server.



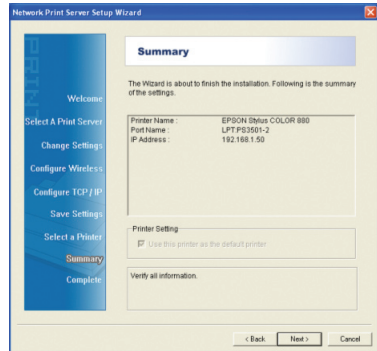
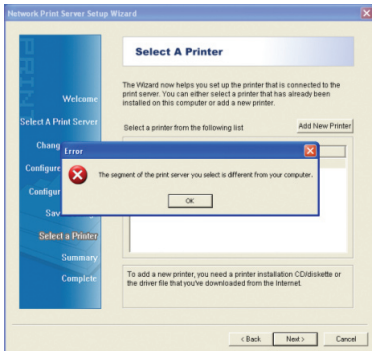
Software Installation - Windows

- All existing printers installed on your computer will show up in this list. Select the model that is now attached to the print server and click **Next** to continue. If the printer you are setting up does not show up in the list, click **Add New Printer** and install your printer's drivers as needed. If asked which port to use, choose LPT1 but do NOT print a test page yet. The printer will be changed to the correct port in the next step.



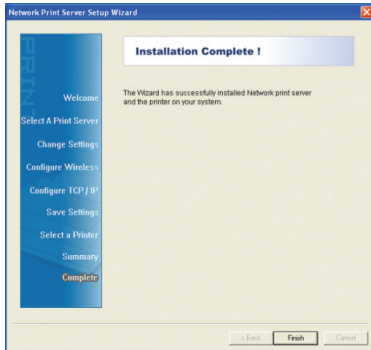
Software Installation - Windows

- If you get the following message, the print server's IP settings are not set up correctly for your network. Click **Back** until you see the screen in step 4, then change the print server's network settings. You may use DHCP to set them automatically if the print server is connected to a router.
- A summary screen will show the name of the printer to be modified and the IP of the print server which will be used. If this information is correct click **Next**.



Software Installation - Windows

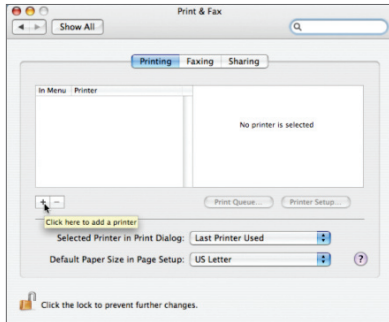
10. Setup of your print server is now complete.
Click **Finish** to close the wizard.



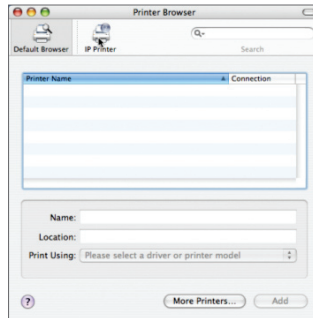
Software Installation - Mac

Software Installation - Mac

1. No software from the Setup CD is needed on Macintosh systems. Simply open the **Print and Fax settings** from your System Preferences window. Click the plus (+) button to setup a new printer.

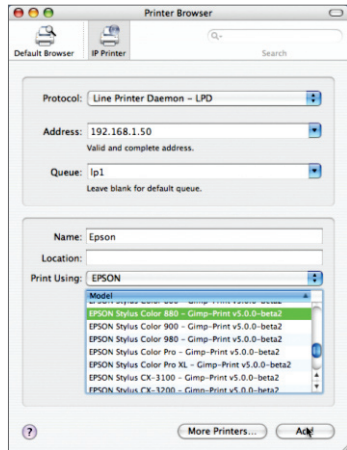


2. At the top of the Printer Browser, click the icon for IP printer.



Software Installation - Mac

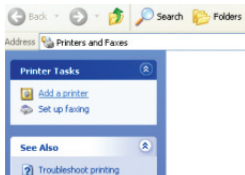
3. Select the LPD protocol, then type in the IP address of the print server. Type “**lp1**” with lowercase letters for the name of the Queue. Name the new printer and select the model below. Click **Add** when you are finished, and you are ready to print.



Software Installation – IPP

Software Installation – IPP

1. To print from a remote location, you will first need to make sure port 631 is forwarded through your router's firewall to the print server. Then simply set up IPP using the address `http://(print-server-ip):631/lp1` as shown here on an example Windows XP system. Click **Add** a printer from your printers and faxes window to begin.

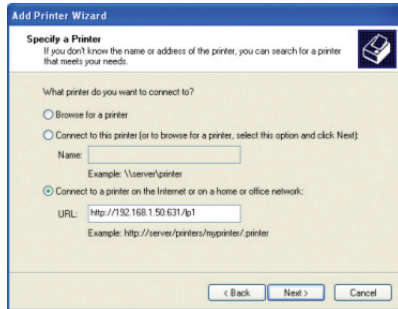
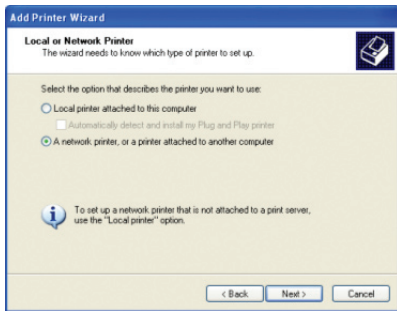


2. Click **Next** when the Add Printer Wizard appears.



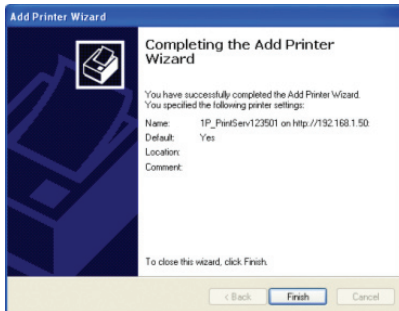
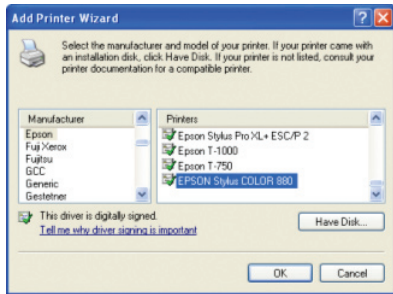
Software Installation – IPP

3. Select the option for a network printer, then click **Next**.
4. Select the option to connect to a printer on the internet, and type in the full IPP address as shown. You must use the external, or WAN, IP address of your router if the print server is behind one. You must also specify port 631 and queue name "lp1" in lowercase. Click **Next** to continue.



Software Installation – IPP

- The wizard will ask you to choose the model of your printer. Click **OK** when you have chosen the appropriate driver.
- Click **Finish** to complete the wizard and begin printing to your home or office printer from anywhere in the world.



If you need technical support, please check out our IOGEAR Tech Info Library (TIL) at <http://www.iogear.com/support> for the latest tips, tricks, and troubleshooting. The TIL is designed to provide you with the latest technical information about our products. Most of the answers to your questions can be found here, so please try it out before contacting technical support. Technical support is available Monday through Friday from 8:00 am to 5:00 pm PST by calling our toll-free number 866-9-IOGEAR (866-946-4327). International callers may need to use the number 949-453-8782. Help is also available by e-mailing us at support@iogear.com.

Warranty

IN NO EVENT SHALL THE DIRECT VENDOR'S LIABILITY FOR DIRECT, INDIRECT, SPECIAL, INCIDENTAL OR CONSEQUENTIAL DAMAGES RESULTING FROM THE USE OF THE PRODUCT, DISK, OR ITS DOCUMENTATION EXCEED THE PRICE PAID FOR THE PRODUCT.

The direct vendor makes no warranty or representation, expressed, implied, or statutory with respect to the contents or use of this documentation, and especially disclaims its quality, performance, merchantability, or fitness for any particular purpose.

The direct vendor also reserves the right to revise or update the device or documentation without obligation to notify any individual or entity of such revisions, or updates. For further inquiries please contact your direct vendor.



Contact us

23 Hubble • Irvine, CA 92618 • (P) 949.453.8782 • (F) 949.453.8785 • www.iogear.com

Free Manuals Download Website

<http://myh66.com>

<http://usermanuals.us>

<http://www.somanuals.com>

<http://www.4manuals.cc>

<http://www.manual-lib.com>

<http://www.404manual.com>

<http://www.luxmanual.com>

<http://aubethermostatmanual.com>

Golf course search by state

<http://golfingnear.com>

Email search by domain

<http://emailbydomain.com>

Auto manuals search

<http://auto.somanuals.com>

TV manuals search

<http://tv.somanuals.com>