

MiniView™

2/4-Port Multi-Function USB 2.0 KVM Switch

User Manual (GCS1772 / GCS1774)

Welcome

Thank you for purchasing one of the most feature-rich KVM with USB peripheral sharing, audio, and built-in Ethernet switch. You can save money and space by eliminating the need for multiple monitors, keyboards, mice, and USB peripheral devices such as printers, scanners, and more. Up to 127 USB devices can be daisy chained from this KVMP switch. Sharing speakers and a microphone also offers extra value and convenience for the users. To top it off, the built-in Ethernet switch allows you to easily network and share Internet with your computers.

USB and KVM technology together makes cross-platform management easy. A single USB console can control a PC and a MAC workstation, and share peripherals and audio between the computers.

We hope you enjoy using your new IOGEAR USB KVMP switch, yet another first-rate connectivity solution from IOGEAR!

©2005 IOGEAR. All Rights Reserved. M0314

IOGEAR, the IOGEAR logo, are trademarks or registered trademarks of IOGEAR, Inc. Microsoft and Windows are registered trademarks of Microsoft Corporation. IBM is a registered trademark of International Business Machines, Inc. Macintosh, G3/G4 and iMac are registered trademarks of Apple Computer, Inc. All other brand and product names are trademarks or registered trademarks of their respective holders. IOGEAR makes no warranty of any kind with regards to the information presented in this document. All information furnished here is for informational purposes only and is subject to change without notice. IOGEAR, Inc. assumes no responsibility for any inaccuracies or errors that may appear in this document.

Table of Contents

Package Contents	02
Overview	03
Features	04
System Requirements	05
Introduction	06
Installation	10
Basic Operation	13
Hotkey Operation	15
Keyboard Emulation	25
Ethernet Switch	27
Firmware Upgrade	29
Appendix – Troubleshooting	37
Specification	38
Technical Support	40
Radio & TV Interference Statement	41
Limited Warranty	42

This package contains:

- 1 x GCS1772 or GCS1774 KVM Switch
- 2 x Custom 6' KVM cables (for GCS1772)
- 4 x Custom 6' KVM cables (for GCS1774)
- 1 x Firmware upgrade cable
- 1 x Power adapter
- 1 x User manual
- 1 x Quick start guide

Check to make sure that all the components are present and that nothing was damaged in shipping. If you encounter a problem, contact your dealer.

Read this manual thoroughly and follow the installation and operation procedures carefully to prevent any damage to the unit, and/or any of the devices that connect to it.

Overview

IOGEAR's Symphony multi-function KVM Switch represents the new wave in KVM technology. The GCS1774 allows you to control four computers using a single VGA monitor, USB keyboard and mouse. In addition, it has a built-in USB 2.0 hub, Ethernet 10/100 switch, and Audio sharing capabilities.

With its built-in USB 2.0 High Speed hub, slow transfer rates are a thing of the past. Fully compatible with USB 2.0 standards, this KVM allows you to share your USB peripherals and transfer data at up to 480 Mbps. In addition, the audio ports allow you to connect one set of speakers and microphone, and share them among your computers.

To complement your KVM setup, IOGEAR's Symphony KVM sports a full-featured Ethernet 10/100 switch. This built-in Ethernet switch allows you to easily add the computers in your KVM setup to your Ethernet network. Among its many features, it supports auto-sensing, 10/100 Mbps speed, and is fully compliant with 802.3 networking standard.

- Multi-function USB KVM switch integrates a USB 2.0 hub, Ethernet switch, and Audio
- Controls multiple computers with a single VGA monitor, USB keyboard and mouse
- Built-in USB 2.0 peripheral sharing to share printers, scanners, hard drives, etc., with data transfer rates of up to 480 Mbps.
- Built-in Ethernet switch to expand your existing broadband network
- Share one set of speakers with all your computers
- Independent switching of KVM, USB peripherals, and audio focus
- Port selection via Hotkeys and front push-buttons
- Auto scan mode for monitoring all computers
- Power on detection – automatically switches to the first powered on port
- Superior video quality - up to 2048 x 1536
- Firmware upgradeable
- Easy installation – no software required
- Keyboard and mouse emulation for error-free boot up
- Hot pluggable – add or remove computers without powering down the switch
- Compatible with multiple operating platforms (PC, Mac, and Sun)
- All cables included

System Requirements

Console

- VGA or SVGA monitor
- USB mouse
- USB keyboard

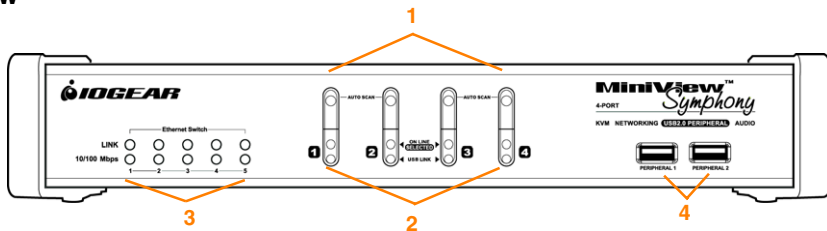
Computer

- VGA or SVGA port
- USB port for keyboard/mouse cable
- USB 2.0 port for USB hub cable
- Supports Windows 98SE/ME/2000/XP; Mac OS 8.6 or higher; Solaris; Linux

Audio

- Requires powered speaker system

Front View



1. Port selection buttons

- **Switch console only** - Press selection button for *less than two (2) seconds* to bring only the KVM focus to the computer attached to its corresponding port
- **Switch everything** - Press selection button for *longer than four (4) seconds* to bring KVM, Audio, and USB Hub focus to the computer attached to its corresponding port.
- **Press and hold** port selection switches 1 and 2 for more than two seconds to start Auto Scan Mode.

2. Ports LEDs

The Ports LEDs are built into the port selection switches. The upper ones are the KVM port LEDs; the lower ones are the USB LEDs.

KVM LEDs

- Lights DIM ORANGE to indicate that the computer attached to the corresponding port is up and running (On Line)

Introduction

- Lights **BRIGHT ORANGE** to indicate that the computer attached to its corresponding port is the one that has the KVM focus (Selected)
- Flashes to indicate that the computer attached to its corresponding port is being accessed under Auto Scan mode.

USB LED

- Lights **DIM GREEN** to indicate that there is a USB cable connection to the computer attached to its corresponding port. Does not light if there is no USB connection to the computer
- Changes to **BRIGHT GREEN** to indicate that the computer attached to its corresponding port is the one that has access to the USB peripherals.

3. Ethernet LEDs

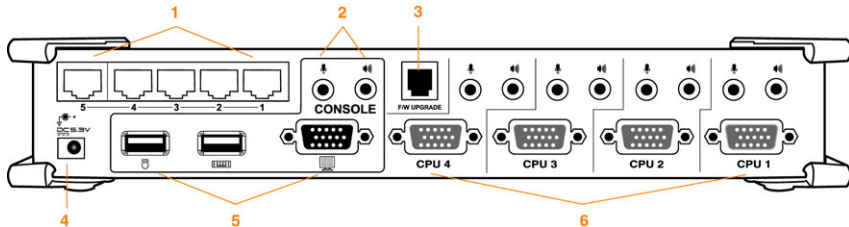
The Ethernet LEDs light to indicate data transmission status of their corresponding ports on the built-in Ethernet switch:

LED	STATUS	INDICATIONS
LAN Link	Off	No data connection to the computer attached to its corresponding port
	On	Data connection to the computer attached to its corresponding port is in effect
	Flashing	Data is being transmitted through the port
10/100 Mbps	Off	Data transmission speed is 10 Mbps
	On	Data transmission speed is 100 Mbps

4. USB Hub

USB peripherals (printers, scanners, hard drives, etc.) can plug into these ports

Back View



1. Ethernet port

Connect CAT 5 LAN cables to these ports.

2. Console Audio jack

The cables from your microphone and speakers plug in here. Each jack is color coded and marked with an appropriate icon.

3. Firmware upgrade port

The included Firmware Upgrade cable that transfers the firmware upgrade data from the administrator's computer to the KVM plugs into this connector. See Firmware Upgrade section for more details. to these ports.

4. Power Jack

The power adapters plug into this jack.

Introduction

5. Console port

Your USB keyboard, USB mouse, and VGA monitor plug here.

6. CPU

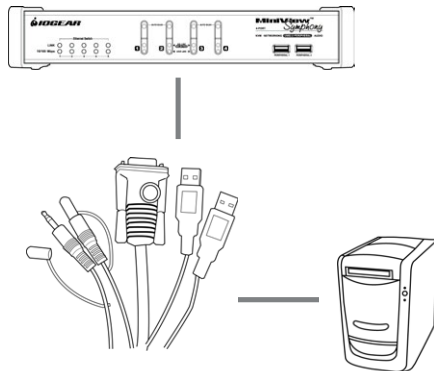
The cables included with the KVM switch plug into here and the other end to your computers.

Note: The 15-pin connectors on the KVM have been specifically modified to work with the included cables.

DO NOT attempt to connect any other ordinary 15-pin cables into this unit.

Cable

The USB KVM Cables are included in the package.



USB KVM Cable

Before you Begin

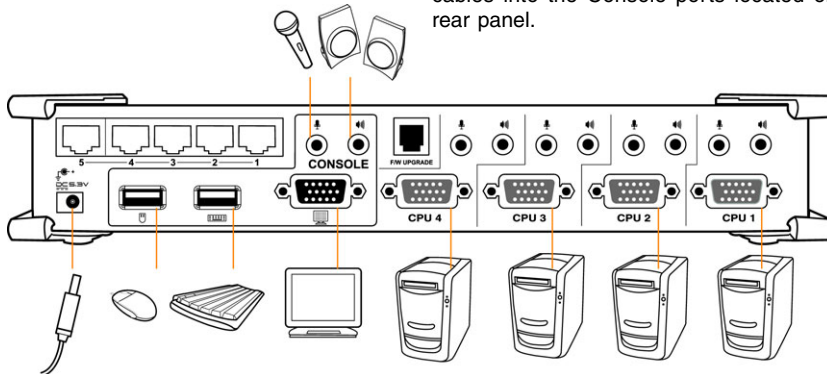
1. Make sure that power to all the devices you will be connecting up has been turned off. You must unplug the power cords of any computers that have the Keyboard Power On function. Otherwise, the switch will receive power from the computer.
2. To prevent damage to your installation, make sure that all devices on the installation are properly grounded.

Step 1

Plug your USB keyboard and USB mouse into their corresponding USB ports located on the KVM's rear panel.

Step 2

Plug your VGA monitor, microphone, and speaker cables into the Console ports located on the unit's rear panel.



Installation

Step 3

Plug one of the included KVM cables to the CPU port

Step 4

Plug the other end of the KVM cable to the respective ports on the computer that is part of your installation.

Step 5

Repeat steps 3 and 4 for any other computers you

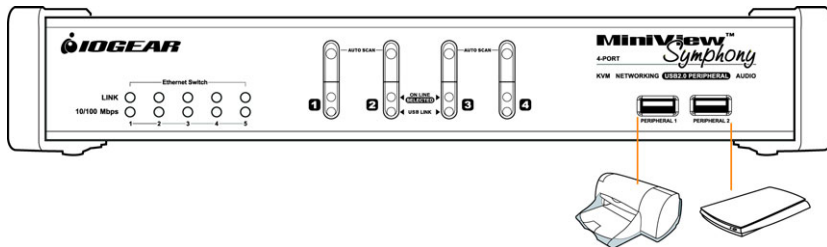
are connecting

Step 6

Plug the USB peripherals that you want to be part of your KVM setup into the front USB hub ports

Step 7

Plug network cable coming from your router to any



of the Ethernet ports on the switch, and plug network cables to each of your computer's Ethernet ports

Step 8

Plug the power adapter cable into the switch's power jack, then plug the power adapter into an AC power source

Step 9

Turn on the power to the computers

INTRODUCTION

Hot Plugging

The GCS1772/GCS1774 supports USB hot plugging – components can be removed and added back into the installation by unplugging their cables from the USB hub ports without the need to shut the unit down.

Powering Off and Restarting

If it becomes necessary to Power Off the KVM unit, before starting it back up you must do the following:

1. Shut down all the computers that are attached to the switch.
2. Unplug power adapter cable from the switch
3. Wait 10 seconds, then plug the switch's power adapter cable back in.
4. After the switch is up, Power On the computers.

Port ID Numbering

Each CPU port on the GCS1772/GCS1774 switch is assigned a port number (1 or 2 for GCS1772; 1 to 4 for GCS1774). The port numbers are marked on the rear panel of the switch.

The Port ID of a computer is derived from the CPU port number it is connected to. For example, a computer connected to CPU port 2 has a Port ID of 2.

The Port ID is used to specify which computer gets the KVM USB peripheral and audio focus with the Hotkey port selection method.

Port Switching

There are two ways to access the computers in your KVM setup:

- Manual switching – pressing the push-buttons on the unit's front panel
- Hotkey switching – entering commands from the keyboard

Manual Switching

1. **Switch console only** - Press selection button for *less than two (2) seconds* to bring only the KVM focus to the computer attached to its corresponding port
2. **Switch everything** - Press selection button for *longer than four (4) seconds* to bring KVM, Audio, and USB Hub focus to the computer attached to its corresponding port.
3. **Press and hold port** selection switches 1 and 2 for more than two seconds to start Auto Scan Mode.

Tip: To stop Auto Scan mode, simply press any of the port selection switches on the KVM.

Hotkey Operation

Hotkey Operation

The GCS1772/GCS1774 provides an extensive, easy-to-use, hotkey function that makes it convenient to control and configure your KVM installation from the keyboard.

NOTE: The table below assumes the use of a PC-compatible keyboard with the *Scroll Lock* key. If you are using a MAC keyboard (or a keyboard that does not have Scroll Lock key), refer to the section in the manual “*Change Port Switching Keys*” for information on re-configuring the KVM’s hotkeys

PC keyboard



Port Switching

HOTKEY	ACTION
[Scroll Lock] [Scroll Lock] [Enter]	Brings the KVM, USB hub, and Audio focus from the current port to the next port on the KVM.
[Scroll Lock] [Scroll Lock] [K] [Enter]	Brings only the KVM focus from the current port to the next port on the installation. The USB hub and Audio focus remain where they are.
[Scroll Lock] [Scroll Lock] [U] [Enter]	Brings only the USB hub focus from the current port to the next port. The KVM and audio focus remain where they are.
[Scroll Lock] [Scroll Lock] [S] [Enter]	Brings only the audio focus from the current port to the next port. The KVM and USB hub focus remain where they are.
[Scroll Lock] [Scroll Lock] [n] [Enter]	Brings the KVM, USB hub, and audio focus to the computer attached to the port corresponding to the specified Port ID.
[Scroll Lock] [Scroll Lock] [n] [K] [Enter]	Brings only the KVM focus to the computer attached to the specified port. The USB hub and audio focus remain where they are.
[Scroll Lock] [Scroll Lock] [n] [U] [Enter]	Brings only the USB hub focus to the computer attached to the specified port. The KVM and audio focus remain where they are.
[Scroll Lock] [Scroll Lock] [n] [S] [Enter]	Brings only the audio focus to the computer attached to the specified port. The KVM and USB hub focus remain where they are.
[Scroll Lock] [Scroll Lock] [n] [K] [U] [Enter]	Brings the KVM and USB hub focus to the computer attached to the specified port. The audio focus remains where it is.
[Scroll Lock] [Scroll Lock] [n] [K] [S] [Enter]	Brings the KVM and audio focus to the computer attached to the specified port. The USB hub focus remains where it is.
[Scroll Lock] [Scroll Lock] [n] [U] [S] [Enter]	Brings the USB hub and audio focus to the computer attached to the specified port. The KVM focus remains where it is.

Note: The **n** stands for the computer's Port ID number (1, 2, 3, or 4). Replace the **n** with the appropriate Port ID when entering hotkey combinations.

Hotkey Operation

Auto Scanning

Hotkey	Action
[Scroll Lock] [Scroll Lock] [A] [Enter]	Starts Auto Scan. The KVM focus cycles from port to port at 5 second intervals.
[Scroll Lock] [Scroll Lock] [A] [n] [Enter]	Starts Auto Scan. The KVM focus cycles from port to port at n second intervals. The value for n can be 1 to 99.

Note:

- While Auto Scan is active, ordinary keyboard and mouse functions are suspended – only Auto Scan mode compliant keystrokes and mouse clicks can be entered. You must exit Auto Scan mode to regain normal console control.
- Although the video focus switches from port to port, the keyboard, mouse, and USB focus doesn't switch.

Invoking Hotkey Mode

For all Hotkey operations, you must use the *number keypad* on the right side of your keyboard.

To Invoke Hotkey Mode: (PC-Compatible keyboard)

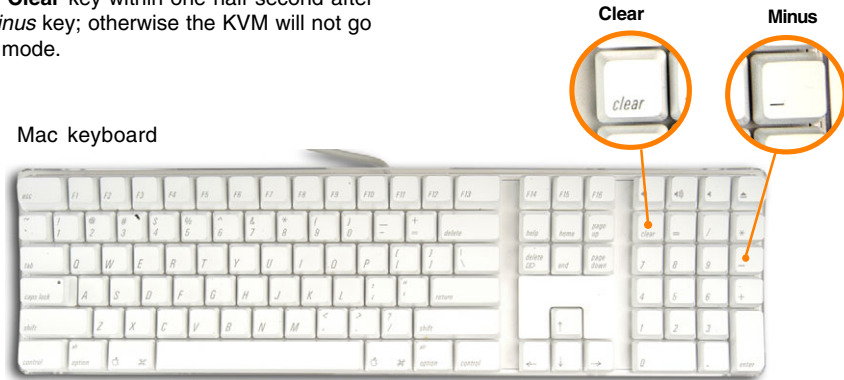
1. Press and hold the **Num Lock** key
2. Press and release the **Minus** key
3. Release the **Num Lock** key within one half second after releasing *Minus* key; otherwise the KVM will not go into Hotkey mode.



Hotkey Operation

To invoke Hotkey Mode (MAC keyboards):

1. Press and hold the **Clear** key
2. Press and release the **Minus** key
3. Release the **Clear** key within one half second after releasing *Minus* key; otherwise the KVM will not go into Hotkey mode.



Note:

- If using the [*Num Lock*], [-] combination is not optimal, you may reprogram the KVM to use an alternate key combination (see next section)
- When Hotkey mode is active, the Caps Lock and Scroll Lock LEDs flash in succession to indicate that Hotkey mode is in effect. They stop flashing and revert to normal status when you exit this mode.

Ordinary keyboard and mouse functions are suspended – only Hotkey compliant keystrokes and mouse clicks can be input.

At the conclusion of some hotkey operations, you automatically exit Hotkey mode. With some operations, you must exit manually by pressing the **Esc** or **Spacebar** on your keyboard.

Hotkey Operation

Change Hotkey Mode Invocation Keys

In case the default Hotkey Mode invocation keys (*Num Lock* and *Minus [-]*) are not optimal in your setup, you may change them to *Ctrl* and *F12*, respectively.

To switch to an alternate Hotkey Mode invocation, do the following:

1. Invoke Hotkey Mode
2. Press and release **H**
3. This will change the Hotkey Mode invocation key to *Ctrl* and *F12* (instead of *Num Lock* and *Minus*).

Note: This procedure is a toggle between the two methods. To revert back to the original HSM invocation keys, repeat the above procedure again.

Change Port Switching Keys

The port switching activation keys can be changed from tapping *Scroll Lock* key twice ([*Scroll Lock*] [*Scroll Lock*]) to tapping *Ctrl* twice [*Ctrl*] [*Ctrl*].

To change the port switching activation keys, do the following:

1. Invoke Hotkey Mode
2. Press and release **T**
3. The new port switching key will be [*Ctrl*], [*Ctrl*]

Note: This procedure is a toggle between the two methods. To revert back to the original port switching keys, repeat the above procedure.

Set Keyboard Operating Platform

The GCS1772/GCS1774 default port configuration is for a PC Compatible keyboard operating platform. If you have a MAC attached to a port, you can change a port's keyboard operating platform configuration as follows:

1. Bring the KVM focus to the desired port
2. Invoke Hotkey Mode
3. Press and release the appropriate Function key (see table below).

Function Key	Operation
[F2]	Sets the MAC keyboard operating platform
[F3]	Sets the Sun keyboard operating platform*
[F10]	Auto detects the keyboard operating platform (for PC Compatible systems)

*The first time that the Sun system runs from a port, you must configure its port for the Sun keyboard operating platform before you turn the system on, or else the Sun system will not start.

List Hotkey Settings

To see a list of the current hotkey settings, do the following:

1. Open a text editor (such as Notepad or Word)
2. Invoke Hotkey Mode
3. Press **F4** on your keyboard to 'paste' this information

Hotkey Operation

USB Reset

If the USB loses focus and needs to be reset, do the following:

1. Invoke Hotkey Mode
2. Press and release **F5** function key

Hotkey Beeper Control

The beep sound the KVM makes when switching can be Toggled ON and OFF by doing the following:

1. Invoke Hotkey Mode
2. Press and release **B**

Disable Port Switching Keys

To disable the port switching keys (Scroll Lock or Ctrl), please do the following:

1. Invoke Hotkey Mode
2. Press **[X] [Enter]**

Note: This procedure is a toggle. To re-enable the keys, repeat the procedure above.

Firmware Upgrade Mode

To set the GCS1772/GCS1774 in firmware upgrade mode:

1. Invoke Hotkey Mode
2. Key in: *upgrade*
3. Press **[Enter]**

Note: The front panel LEDs will flash to indicate that the KVM is in firmware upgrade mode. To exit firmware upgrade mode, you must power off the switch.

Restore Default Settings

To reset the GCS1772/GCS1774 to its factory default settings, do the following:

1. Invoke Hotkey Mode
2. Press [R] [Enter]

Hotkey Default Settings

SETTING	DEFAULT
Port Switching	[Scroll] [Scroll Lock]
Invoking HSM	[Num Lock] [-]
Beeper	ON
Keyboard Operating Platform	PC Compatible
Port Switching Keys	Enabled


Hotkey Operation

MAC Keyboard Emulation

The PC compatible (101/104 key) keyboard can emulate the functions of the Mac keyboard. The emulation mappings are listed in the table below.

Please note the following:

- In order for these keys to work, you must first set that port to the Mac keyboard operating platform (see Page 22)
- When using the key combinations, press and release the first key, then press and release the second key

PC KEYBOARD	MAC KEYBOARD
[Shift]	Shift
[Ctrl]	Ctrl
[Win]	
[Ctrl], [4]	
[Alt]	L Alt/Option
[Ptr_Sc]	F13
[Scroll Lock]*	F14
[Desktop Menu]	=
[Enter]	Return
[Backspace]	Delete
[Ins]	Help
[Ctrl], [Win]	F15
[Ctrl], [1]	Mute/Un-mute
[Ctrl], [2]	Vol, Down
[Ctrl], [3]	Vol, Up

Sun Keyboard Emulation

The PC compatible (101/104 key) keyboard can emulate the functions of the Sun keyboard. The emulation mappings are listed in the table below.

Please note the following:

- In order for these keys to work, you must first set that port to the Sun keyboard operating platform (see Page 22)
- When using the key combinations, press and release the first key, then press and release the second key

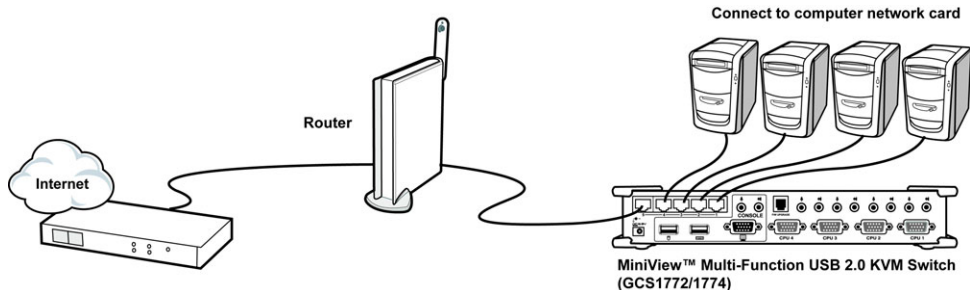
PC Keyboard	Sun Keyboard
[Ctrl] [T]	Stop
[Ctrl] [F2]	Again
[Ctrl] [F3]	Props
[Ctrl] [F4]	Undo
[Ctrl] [F5]	Front
[Ctrl] [F6]	Copy
[Ctrl] [F7]	Open
[Ctrl] [F8]	Paste
[Ctrl] [F9]	Find
[Ctrl] [F10]	Cut
[Ctrl] [4]	(moon icon)
[Ctrl] [H]	Help
[Ctrl] [1]	Mute
[Ctrl] [2]	Volume down
[Ctrl] [3]	Volume Up
[Win]	Compose

Ethernet Switch

Ethernet switch

This section of the manual explains the capabilities of the built-in switch and *where* it fits in your Network. Essentially, the built-in switch allows you to connect the computers in your KVM setup to your existing Ethernet network. If you want to network and share Internet with the computers in the KVM setup, you will need a connection between your Cable/DSL router and the KVM switch.

A typical network setup will look similar to the scenario shown below.



As you can see from the picture, your Cable/DSL line connects to your router's WAN port; network cable from *any* of the router's LAN ports connect to *any* of the KVM's Ethernet ports; and network cable from KVM's Ethernet port connects to the Ethernet card on your computer.

Connect Computers:

1. Connect CAT 5 cable coming from your Cable/DSL router to *any* of the Ethernet ports on the KVM
Tip: By doing this, the computers in your KVM setup will "join" your existing Ethernet network
2. Connect network cable to Ethernet port on KVM switch and the other end to the computer's Ethernet card
3. That's all!

The Firmware Upgrade Utility

The Windows-based Firmware Upgrade Utility (FWUpgrade.exe) provides a smooth, automated process for upgrading the KVM switch's firmware. To run the firmware, you will need to use a windows based PC with an available serial port.

The Utility comes as part of a Firmware Upgrade Package that is specific for each device. New firmware upgrade packages are posted on our web site as new firmware revisions become available. Check the web site regularly to find the latest packages and information relating to them:

<http://www.iogear.com>

Before You Begin

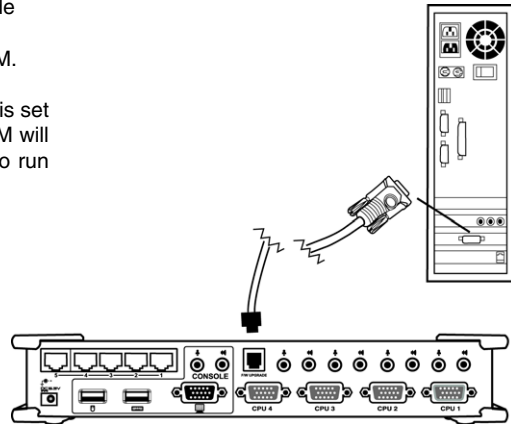
To prepare for the firmware upgrade, do the following:

1. From a computer that is not part of your KVM installation, go to the IOGEAR support site and select the product part number (GCS1772 or GCS1774) to get a list of available Firmware Upgrade Packages.
2. Choose the Firmware Upgrade Package you want to install (usually the most recent), and download it to your computer.
3. Use the *Firmware Upgrade Cable* provided with this unit, to connect to a serial port on your computer to the *Firmware Upgrade Port* of your switch.

The Firmware Upgrade Utility

4. Shut down the computers on your MiniView™ installation and make sure you have set the KVM in firmware upgrade mode as instructed under section Hotkey operation → Firmware upgrade mode
5. Make sure the power is plugged into the KVM.

Once the power is plugged in and the switch is set to upgrade, all of the amber lights on the KVM will flash once per second. Now you are ready to run the firmware upgrade utility.



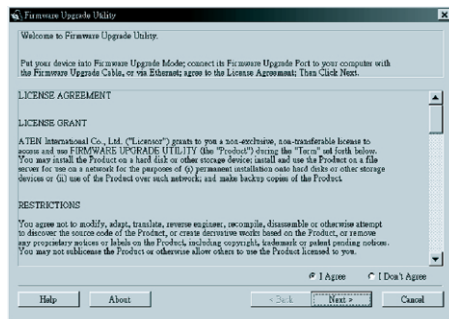
The Firmware Upgrade Utility

Starting the Upgrade

To upgrade your firmware:

1. Run the downloaded Firmware Upgrade Package file - either by double-clicking the file icon, or by opening a command line and entering the full path to it.
2. The Firmware Upgrade Utility *Welcome* screen appears:

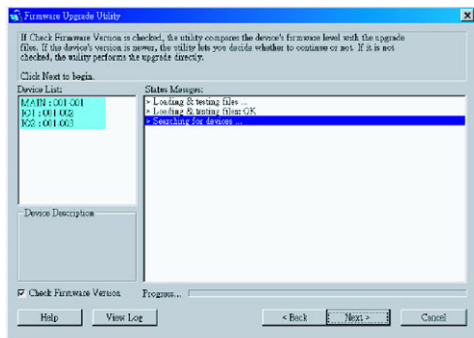
Read and *Agree* to the License Agreement (enable the I Agree radio button).



The Firmware Upgrade Utility

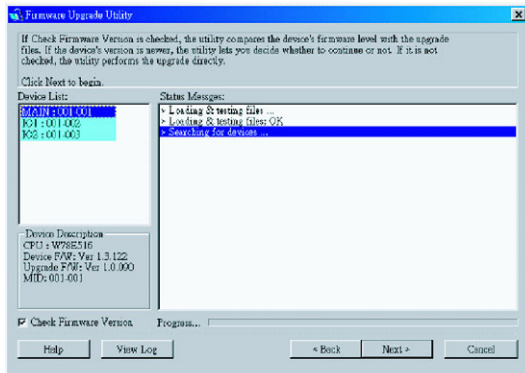
3. Click Next to continue. The Firmware Upgrade Utility main screen appears:

The Utility inspects your installation. All the devices capable of being upgraded by the package are listed in the *Device List* panel.



The Firmware Upgrade Utility

4. As you select a device in the list, its description appears in the *Device Description* panel.

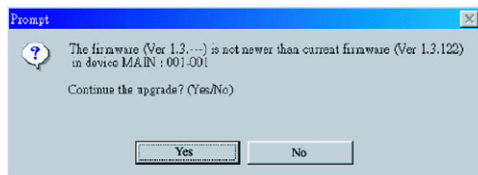


The Firmware Upgrade Utility

5. After you have made your device selection(s), Click **Next** to perform the upgrade.

If you enabled *Check Firmware Version*, the Utility compares the device's firmware level with that of the upgrade files. If it finds that the device's version is higher than the upgrade version, it brings up a dialog box informing you of the situation and gives you the option to continue or cancel.

If you didn't enable *Check Firmware Version*, the Utility installs the upgrade files without checking whether they are a higher level, or not.

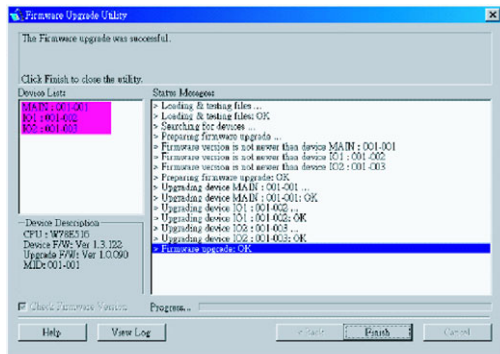


The Firmware Upgrade Utility

As the Upgrade proceeds status messages appear in the Status Messages panel, and the progress toward completion is shown on the *Progress* bar.

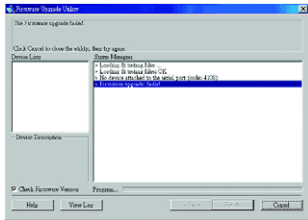
After the upgrade has completed, a screen appears to inform you that the procedure was successful:

Click **Finish** to close the Firmware Upgrade Utility.



The Firmware Upgrade Utility

If the upgrade failed to complete successfully a dialog box appears asking if you want to retry. Click **Yes** to retry. If you click **No**, the *Upgrade Failed* screen appears:



Click **Cancel** to close the Firmware Upgrade Utility. See the next section, *Firmware Upgrade Recovery*, for how to proceed.

Firmware Upgrade Recovery

There are basically three conditions that call for firmware upgrade recovery:

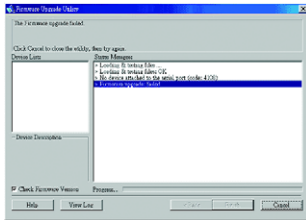
- When you begin a firmware upgrade, but decide not to proceed with it.
- When the Mainboard firmware upgrade fails.
- When the I/O firmware upgrade fails.

To perform a firmware upgrade recovery, do the following:

1. Slide the *Firmware Upgrade Recovery Switch* (see p. 8 drawing) to the **Recover** position.
2. Power off and restart the switch.
3. Slide the *Firmware Upgrade Recovery Switch* back to the **Normal** position.
4. Repeat Step 2.

The Firmware Upgrade Utility

If the upgrade failed to complete successfully a dialog box appears asking if you want to retry. Click **Yes** to retry. If you click **No**, the *Upgrade Failed* screen appears:



Click **Cancel** to close the Firmware Upgrade Utility. See the next section, *Firmware Upgrade Recovery*, for how to proceed.

Firmware Upgrade Recovery

There are basically three conditions that call for firmware upgrade recovery:

- When you begin a firmware upgrade, but decide not to proceed with it.
- When the Mainboard firmware upgrade fails.
- When the I/O firmware upgrade fails.

To perform a firmware upgrade recovery, do the following:

1. Slide the *Firmware Upgrade Recovery Switch* (see p. 8 drawing) to the **Recover** position.
2. Power off and restart the switch.
3. Slide the *Firmware Upgrade Recovery Switch* back to the **Normal** position.
4. Repeat Step 2.

Specification

FUNCTION		GCS1772	GCCS1774
Computer Connections		2	4
CPU Port selection		Front Panel switches; Hotkeys	Same as left
LEDs	KVM	2 (orange)	4 (orange)
	USB	2 (green)	4(green)
	Link	3 (green)	5 (green)
	10/100 Mbps	3 (green)	5 (green)
Console Connectors	Keyboard	1 x USB Type A female	Same as left
	Mouse	1 x USB Type A female	Same as left
	Video	1 x HDB-15 female	Same as left
	Audio	1 x Speaker jack, 1 x Microphone jack	Same as left
CPU connectors	KVM data	2 x SPHD – 15 female	Same as left
	Audio	2 x speaker jacks, 2 x microphone jacks	4 x SPHD – 15 female
USB hub		2 x USB Type A female	4 x speaker jacks, 4 x microphone jacks
Ethernet Hub		3 x RJ-45 sockets	5 x RJ-45 sockets
Firmware Upgrade port		1 x RJ-11 socket	Same as left

Specification

Specification

FUNCTION	GCS1772	GCCS1774
Power adapter	1 x DC 5.3V; 2.4A	Same as left
Power Consumption	DC 5.3V; 4.5W; 900mA	DC 5.3V; 5W; 1000mA
Scan Interval	1-99 secs (5 sec default)	Same as left
Resolution	Up to 2048 x 1536	Same as left
Housing	Metal	Same as left
Environment	Operating Temperature: 0-50 C Storage Temperature: -20-60 C Humidity: 0-80% RH	Same as left
Weight	1.56 lbs	2.03 lbs
Dimensions (L x W x H)	8.27 x 3.5 x 2.19 in	10.63 x 3.5 x 2.19 in

If you need technical support, please check out our IOGEAR Tech Info Library (T.I.L.) at www.iogear.com/support for the latest tips, tricks, and troubleshooting. The IOGEAR T.I.L. was designed to provide you with the latest technical information about our products. Most of the answers to your questions can be found here, so please try it out before contacting technical support.

Technical support is available Monday through Friday from 8:00 am to 5:00 pm PST and can be reached at (949) 453-8782 or 866-946-4327

Radio & TV Interference Statement

WARNING!!! This equipment generates, uses and can radiate radio frequency energy and, if not installed and used in accordance with the instruction manual, may cause interference to radio communications. This equipment has been tested and found to comply with the limits for a Class B computing device pursuant to Subpart J of Part 15 of FCC Rules, which are designed to provide reasonable protection against such interference when operated in a commercial environment. Operation of this equipment in a residential area is likely to cause interference, in which case the user at his own expense will be required to take whatever measures may be required to correct the interference.

Limited Warranty

IN NO EVENT SHALL THE DIRECT VENDOR'S LIABILITY FOR DIRECT, INDIRECT, SPECIAL, INCIDENTAL OR CONSEQUENTIAL DAMAGES RESULTING FROM THE USE OF THE PRODUCT, DISK, OR ITS DOCUMENTATION EXCEED THE PRICE PAID FOR THE PRODUCT.

The direct vendor makes no warranty or representation, expressed, implied, or statutory with respect to the contents or use of this documentation, and especially disclaims its quality, performance, merchantability, or fitness for any particular purpose.

The direct vendor also reserves the right to revise or update the device or documentation without obligation to notify any individual or entity of such revisions, or updates. For further inquiries please contact your direct vendor.



Contact info.

23 Hubble • Irvine, CA 92618 • (P) 949.453.8782 • (F) 949.453.8785 • www.iogear.com

Download from www.Somanuals.com. All Manuals Search And Download.

Free Manuals Download Website

<http://myh66.com>

<http://usermanuals.us>

<http://www.somanuals.com>

<http://www.4manuals.cc>

<http://www.manual-lib.com>

<http://www.404manual.com>

<http://www.luxmanual.com>

<http://aubethermostatmanual.com>

Golf course search by state

<http://golfingnear.com>

Email search by domain

<http://emailbydomain.com>

Auto manuals search

<http://auto.somanuals.com>

TV manuals search

<http://tv.somanuals.com>