



Installation Guide

Wireless USB Hub and Adapter Kit

GUWH204KIT
PART NO. M1064



Table of Contents

System Requirements	4	Advanced Settings	25
Package Contents	5	Frequently Asked Questions	28
Device Overview	6	Technical Specifications	32
Installation	8	Technical Support	34
Hardware Preparation	9	Limited Warranty	36
Software Installation	10	Federal Communications Commission (FCC) Statement	37
Driver Installation	15	Contact	38
Connecting USB Devices	23		

System Requirements

- PC System requires Windows XP 32-bit (with SP2 and .NET Framework 2.0)
or Windows Vista 32-bit or 64-bit
- Available AC outlets in the room
- Available USB ports
- Software requires Windows and CD-ROM drive

Package Contents

- 1 x Wireless USB Hub
- 1 x Wireless USB Host Adapter
- 1 x Power Adapter
- 1 x USB 2.0 Type A to mini-B Cable (3 ft.)
- 1 x USB 2.0 Extension Cable (5 ft.)
- 1 x Software CD (with Electronic Manual)
- 1 x Quick Start Guide
- 1 x Registration / Warranty Card

Device Overview

1. Host PC LED

Solid LED indicates that the Wireless USB Hub has established a wireless connection with the Wireless USB Host Adapter

2. Hub LED

Flashing indicates that data is being transmitted

3. Security LED

Normally Off. Flashes during cable association process. Solid LED indicates a successful cable association process. During wireless operation, solid LED indicates that a secure wireless connection has been established with the Wireless USB Host Adapter

4. Host Selection button*

Allows you to manually connect/disconnect the Wireless USB Hub with up to 8 Wireless USB Hosts that have been previously associated

5. Mini USB Connector

6. USB Device Connector

7. Power Adapter Connector

Wireless USB 4-Port Hub



8. Wireless USB Activity Indicator

* The Host Selection button can be used if the Wireless USB Hub has already been successfully associated with more than one Wireless USB Host Adapter-PC combination. The Wireless USB Hub can support up to 8 such associations. Use the Host Selection button to manually cycle through the up to 8 choices for which Wireless USB Host Adapter-PC combination to connect to. Using this button, you can force the Wireless USB Hub to connect to one of 8 pre-associated PCs of your choosing.

Wireless USB Adapter



Installation

Before we get started, please NOTE:

Do not place Wireless USB devices under direct sunlight or near high heat emitting devices;

Do not place Wireless USB devices near water or wet surfaces to avoid electric hazards;

Do not place Wireless USB devices on any moving or unstable surfaces;

Hardware Preparation

1. Do not connect the Wireless USB Host Adapter to your computer until you are instructed to do so later in the section titled "Driver Installation".
2. Remove the Wireless USB Host Adapter, Wireless USB Hub, USB 2.0 A to Mini B Cable, power adapter, extension adapter, and the installation CD from the package.
3. Allocate a space for the Wireless USB Host Adapter's placement. Make sure you avoid the places mentioned above. You will need to make available a USB 2.0 port on your PC. **Do not connect the Wireless USB Host Adapter** to your computer at this time. If using a Desktop PC, plug the Wireless USB Host Adapter into the provided extension cable. Place the extension cable on a flat surface, preferably the top of the desk/work area in order to ensure a good line-of-sight signal with the Wireless USB Hub.
4. Allocate a space for the Wireless USB Hub. During a one-time-only installation, the Wireless USB Hub needs to be close to your PC. After installation the Wireless USB Hub can be moved to a more permanent location. Make sure you avoid the places mentioned above. Do not plug in to an AC outlet at this time.
5. Attach the power adapter connector to the Wireless USB Hub. Do not plug in to an AC outlet at this time.

Software Installation

Please always check www.iogear.com for the latest drivers.

IMPORTANT NOTE:

If your PC already has a previous version of this software installed, please be sure to un-install it before proceeding.

To un-install go to Control Panel -> Add or Remove Programs. Scroll to "IOGEAR Wireless USB (HWA)" Click "IOGEAR Wireless USB (HWA)", then click Remove.

Restart your PC once you have completed removing any pre-existing UWB software.

Note:

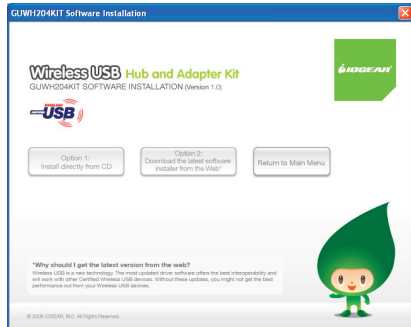
If installing on Windows XP, Service Pack 2 (SP2) is required. Please Verify that SP2 has been installed on your PC before proceeding with the UWB installation software.

1. To install the UWB software, insert the included CD into your computer. The following menu should appear automatically. If not, select "Run CD_Start.exe" OR navigate to the CD Rom drive containing the installation CD and double click on CD_Start.exe to bring up the user menu. Click on Installation to begin the installation process.



2. The next screen will let you choose if you want to install the latest software from the Internet or if you want to install the software included on the CD.

If you choose '**Option 2: Download latest software installer from the Web**', a browser window will appear redirecting you directly to the IOGEAR website where you'll find the most up-to-date driver software. Once you download the software, double-click on the .exe file to begin the installation process.



If you choose to install the software from the installation CD, select '**Option 1: Install directly from CD**'

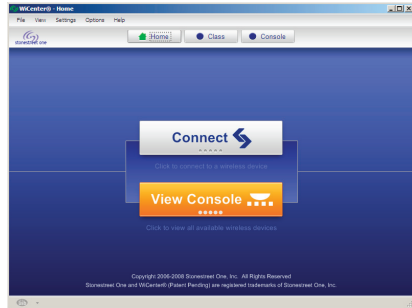
Click on the appropriate Windows operating system your PC is running. This will start the software installation. Please follow the installation wizard.

Note:

Microsoft .NET Framework 2.0 is required by the driver software. Once you begin the software installation, if .NET Framework 2.0 is not installed on your PC, the software will automatically prompt you to install it before proceeding to the software installation.



Once the software has completed installing, the WiCenter application will automatically open. If not, please double-click on the WiCenter shortcut created on the Desktop during the installation process.



Driver Installation

Step 1: Connecting Host Adapter

Plug the Wireless USB Host Adapter into an available USB 2.0 port.



If using a Desktop PC, plug the Wireless USB Host Adapter into an available USB 2.0 port utilizing the provided extension cable.



Place the extension cable on a flat surface, preferably the top of the desk/work area in order to ensure a good line-of-sight signal with the Wireless USB Hub. Windows should detect the device and complete the driver installation process automatically.

Step 2: Connecting Wireless USB Hub

Verify that the antenna is securely attached to the Wireless USB Hub and is pointed in a vertical position.

Power on the Wireless USB Hub by plugging the power adapter provided in the package.



Step 3: Wireless USB Hub association

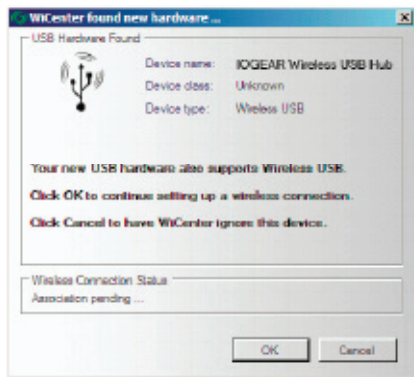
In order for the Wireless USB Adapter to communicate with the Wireless USB Hub, you will need to start the association process. The association process will set up a wireless link between the Wireless USB Host Adapter and the Wireless USB Hub. This is a one-time process per host PC.

To start, use the included USB 2.0 A to mini-B cable to connect the Wireless USB Hub to your PC.

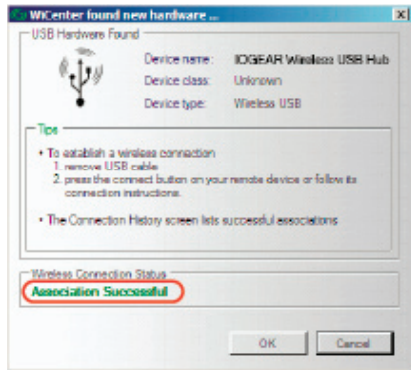


Windows will detect that a new device has been connected. This will automatically install the necessary drivers and start the Wireless USB Association process.

You will see the window on the screen as shown below. Click **OK** to begin the association process.



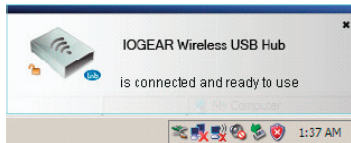
Once the association process has been successfully completed, you will see the wireless connection status showing **Association Successful**. Click OK to close the window.



After completing the association process, unplug the USB A to mini B cable from the Wireless USB Hub.

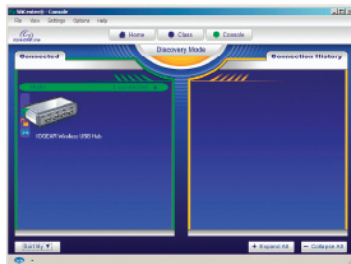


The Wireless USB Hub will attempt to establish the wireless link with the USB Host Adapter. Once the link has been successfully established, you will see the following window in your System Tray.



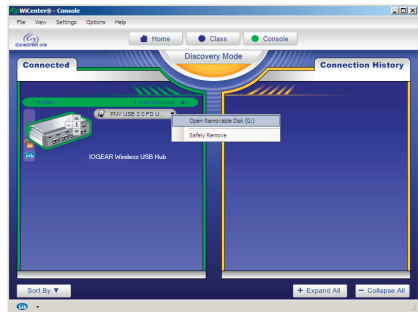
Place the Wireless USB Hub preferably on top your desk/work area to ensure a good line-of-sight signal with the Wireless USB Host Adapter.


The **View Console** screen will also show the IOGEAR Wireless USB Hub under the **Connected** column, indicating that the wireless link connection has been established.



Connecting USB Devices

Once the Wireless USB Hub is connected and communicating with the Wireless USB Host Adapter, you may connect your USB devices to the Wireless USB Hub. Once connected, you will be able view the USB devices connected by clicking the [+]. This will bring a dropdown of all peripherals currently connected and available. You can also access hard drives, flash drives, and other storage devices directly from this box by clicking on the Removable Disk that appears.





To disconnect a USB device from your PC, you may select **Safely Remove** from the list on the WiCenter program or from your computer's system tray.

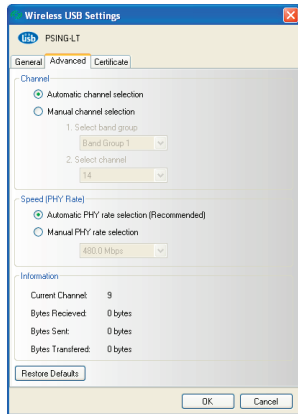
Note: If your USB device requires software or drivers installation, such as a printer, please connect your USB device to your PC first and install the software or driver before connecting to the Wireless USB Hub.

Advanced Settings

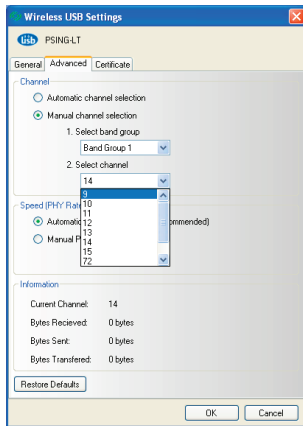
The advanced settings of WiCenter allow you to make changes related to the Channel that data is being transmitted on, as well as the rate at which data is sent. The following shows the Advanced Settings tab which can be accessed by clicking on Settings Wireless USB Settings, and then selecting the Advanced tab on the window that appears. The following shows the default and recommended settings.

NOTE: Do not change the PHY Rate setting. Leave this on the recommended and default setting. The Speed (PHY Rate) will be automatically set by WiCenter in order to achieve the best range and throughput performance.

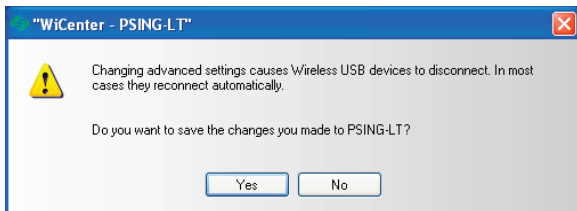
The default settings are appropriate for most all situations. Only change channel settings if you have significantly reduced throughput due to congested air space.



If required to change the Channel manually, select **Manual channel selection**. The following figure shows the available channels for selection.



Once a channel has been changed manually, the following window will appear indicating that the connection on the Wireless USB Hub will disconnect. Click **Yes** to change the channel. Once the channel is changed, the Wireless USB Hub will automatically re-connect.



Frequently Asked Questions

1. **Problem:** WiCenter UWB Software reports errors when trying to use the Wireless USB Host Adapter and Wireless USB Hub on Windows XP operating system.

Solution: Verify that Service Pack 2 (SP2) has been installed on your PC.
2. **Problem:** No LEDs lighting up on the Wireless USB Hub.

Solution: Check the power supply's connection to the Wireless USB Hub.
3. **Problem:** No LED on the Wireless USB Host Adapter.

Solution: Re-insert the Wireless USB Host Adapter into USB port.
4. **Problem:** LED does not light up after inserting a USB device into a peripheral port on the Wireless USB Hub.

Solution: Remove the Wireless USB Host Adapter from the PC and disconnect the power supply from the Wireless USB Hub. Re-insert the Wireless USB Host Adapter and reconnect power to the Wireless USB Hub.

- 
5. **Problem:** Poor/Diminished range with the Wireless USB Host Adapter and Wireless USB Hub.

Solution: If using a Desktop PC, do not plug the Wireless USB Host Adapter in the back of the PC. Plug the Wireless USB Host Adapter in the front of the system to ensure a good line-of-site signal with the Wireless USB Hub. Also, verify that you are utilizing the USB 2.0 extension cable. If using a laptop, verify that the antenna on the Wireless USB Host Adapter and the Wireless USB Hub is positioned vertically.

6. **Problem:** Certain USB devices will not work with the Wireless USB Hub.

Solution: Verify that the USB device has the ability to operate when connected to a hub of any kind by checking with the product documentation. If the USB device does not have the functionality to operate with a wired hub, then it will not work with the Wireless USB Hub. Also, verify that the latest drivers for the product are being used by going to the manufacturer's website and downloading the most up-to-date drivers.

- 
7. **Problem:** Wireless USB Hub will not associate with the Wireless USB Host Adapter.

Solution: Verify that the WiCenter software is running by double-clicking on the WiCenter icon created on the desktop during the installation process. If the WiCenter icon is in the System Tray, this can be double-clicked in order to bring up the WiCenter user interface.

8. **Problem:** USB printer has loaded drivers correctly when connected to the Wireless USB Hub, however, nothing will print

Solution: Verify that the latest software has already been installed on the PC from the product website. If the printer was installed previously when connected directly to the PC, the printer was installed as “Model Name”. When the printer driver is installed when connecting to the Wireless USB Hub, the printer is installed as a “Model Name (Copy 1)”.

If the printer was never directly connected to the PC and drivers were never installed, when it is connected to the Wireless USB Hub, the printer will install as “Model Name” when installing the printer drivers.

When printing to the printer when it is connected to the Wireless USB Hub, verify that the correct printer is being selected in the printer options window by selecting the correct model name to print to.



9. **Problem:** The throughput of USB Hard Drive or USB Flash drive is less when plugged in the Wireless USB Hub than when plugged directly to the PC.

Solution: Due to the protocol overhead of Wireless USB, you will experience a slower throughput wirelessly than over a wired connection.

Technical Specifications

Function	GUWH204KIT
Operating System Support	Microsoft Windows XP 32-bit (Service Pack 2); Microsoft Vista 32/64 bit
Operating Range	Up to 30 feet (10 meters)
Frequency Band	(WiMedia Band Group 1, 3, 6) Frequency Range 3.168GHz to 8.976GHz
Data Rate	Up to 480 Mbps
USB Specification	Wireless USB 1.0; USB 2.0/1.1
Connectors	
USB	4 downstream ports, 1 mini-B for Association
Host Selection	Supports up to 8 Active Hosts
Security	Highly Secured Wireless Connection (AES 128 bits)
Association Mode	Cabled association via Windows GUI

Antenna Type	Omni-Directional, external whip antenna for both Hub and Host Adapter
Reset Switch	Yes
LEDs	
ACT (Activity)	LED on Host adapter to show Data/Activity
Host Status	On the Hub to show Hub / Host PC connect
Association	LED to show Association / Security
Power Adapter	5V, 2.5A (110 - 240VAC)

Technical Support

To help IOGEAR® customers obtain the highest level of performance from their Wireless USB devices, the IOGEAR® Service Support team is available to answer your technical questions. Do not hesitate to call if you are having trouble getting your device to work correctly. IOGEAR® Service Support can be reached


by phone from 24 hours a day, 7 days a week or through the following address during normal business hours.

Toll Free: 866-946-4327 (USA)

Phone: 949-453-8782

23 Hubble

Irvine, CA 92681



You may also reach us online at www.iogear.com/support 24 hours a day. Please be ready to give a brief description of the problem, and what you were doing when the problem occurred, before calling Service Support. The Service Support representative will be able to serve you much quicker if you are prepared to answer the seven questions listed below.

1. What is the purchase date and serial number of the product?
2. Were any messages displayed on the screen when the error occurred? If so, what was the exact wording of the message?
3. What type of Computer are you using?
4. When does the problem occur?
5. Can the problem be reproduced? If so, what are the steps necessary to reproduce the problem?
6. What version of the OS are you using?
7. What have you already tried to get the problem resolved?

Limited Warranty

IN NO EVENT SHALL THE DIRECT VENDOR'S LIABILITY FOR DIRECT, INDIRECT, SPECIAL, INCIDENTAL OR CONSEQUENTIAL DAMAGES RESULTING FROM THE USE OF THE PRODUCT, DISK, OR ITS DOCUMENTATION EXCEED THE PRICE PAID FOR THE PRODUCT.

The direct vendor makes no warranty or representation, expressed, implied, or statutory with respect to the contents or use of this documentation, and especially disclaims its quality, performance, merchantability, or fitness for any particular purpose.

The direct vendor also reserves the right to revise or update the device or documentation without obligation to notify any individual or entity of such revisions, or updates. For further inquiries please contact IOGEAR.

Federal Communications Commission (FCC) Statement

This device complies with part 15 of the FCC Rules. Operation is subject to the following two conditions: (1) this device may not cause harmful interference, and (2) this device must accept any interference received, including interference that may cause undesired operation. This device is authorized under 47 CFR 15.519 (the FCC Rules and Regulations). The operation of this device is subject to the following restriction: This UWB device shall transmit only when it is sending information to an associated receiver. This UWB device shall cease transmission within 10 seconds unless it receives an acknowledgement from the associated receiver that its transmission is being received. An acknowledgement of reception must continue to be received by the transmitting device at least every 10 seconds of operation or the UWB device must cease transmitting.

Contact

IOGEAR

23 Hubble

Irvine, CA 92618

P 949.453.8782

F 949.453.8785

Visit us at: www.iogear.com

© 2008 IOGEAR® Part No. M1064

IOGEAR, the IOGEAR logo, are trademarks or registered trademarks of IOGEAR, Inc. Microsoft and Windows are registered trademarks of Microsoft Corporation. All other brand and product names are trademarks or registered trademarks of their respective holders. IOGEAR makes no warranty of any kind with regards to the information presented in this document. All information furnished here is for informational purposes only and is subject to change without notice. IOGEAR, Inc. assumes no responsibility for any inaccuracies or errors that may appear in this document.



About Us



FUN

IOGEAR offers connectivity solutions that are innovative, fun, and stylish, helping people enjoy daily life using our high technology products.



GREEN

IOGEAR is an environmentally conscious company that emphasizes the importance of conserving natural resources. The use of our technology solutions helps reduce electronic waste.



HEALTH

IOGEAR supports healthy and fit lifestyles. By integrating products with the latest scientific developments, IOGEAR's solutions enhance the life of end-users.

Free Manuals Download Website

<http://myh66.com>

<http://usermanuals.us>

<http://www.somanuals.com>

<http://www.4manuals.cc>

<http://www.manual-lib.com>

<http://www.404manual.com>

<http://www.luxmanual.com>

<http://aubethermostatmanual.com>

Golf course search by state

<http://golfingnear.com>

Email search by domain

<http://emailbydomain.com>

Auto manuals search

<http://auto.somanuals.com>

TV manuals search

<http://tv.somanuals.com>