

Installation Guide

Universal 5-Port Wi-Fi N Ethernet Hub

GWU647

PART NO. M1200

Table of Contents

Package Contents	4
System Requirements	5
Product Overview	6
Installation	8
Installation without WPS - Windows XP	10
Installation without WPS - Windows Vista	16
Installation without WPS - Windows 7	24
Installation without WPS - Mac	32
Manual Set Up	37
Firmware Upgrade	41
Federal Communications Commission (FCC) Statement	46
CE Compliance	47
SJ/T 11364-2006	48
Limited Warranty	49
Contact	50

Package Contents

- 1 X Universal 5-Port Wi-Fi N Ethernet Hub
- 1 X AC to USB Power Cable
- 1 X AC to USB Power Adapter
- 1 X Ethernet Cable
- 1 X Quick Start Guide
- 1 x Warranty Card

System Requirements

- Operating System
 - Windows XP, Windows Vista, Windows 7
 - Mac OS X v10.4 and above
- Wireless network with WPS setup
- Wireless network without WPS setup and computer

Product Overview

1. WPS Button

Push and hold the WPS button for 5~10 seconds to enable the WPS feature.

2. Ethernet Port

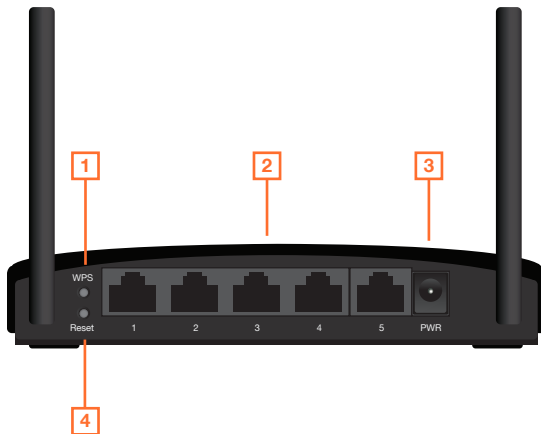
The Ethernet port allows a LAN connection through Cat 5 cables. Supports auto-sensing at 10/100M speed, half/ full duplex.

3. AC Power

AC Power Adapter

4. Reset Button

Push and hold the reset button for 5~10 seconds to reset the Wi-Fi Hub to factory default setting



LED Indicator State Description

1. LAN LED

Flashing - Data is transmitting or receiving on the LAN interface.
On - Port linked.
Off - No link.

On - Port linked.
Off - No link.

2. WPS LED

Flashing - The WPS feature is enabled and in use.
Off - The WPS feature is not in use.

Off - The WPS feature is not in use.

3. WLAN LED

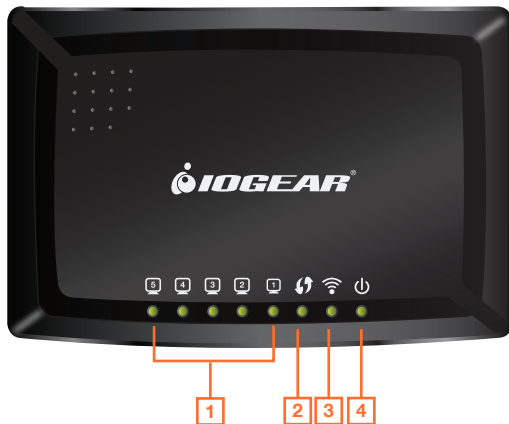
Flashing - WLAN is transmitting or receiving data.
Off - WLAN is off

Off - WLAN is off

4. Power LED

On - Power on.
Off - Power off.

Off - Power off.



Installation

Wireless Setup with WPS

Step 1: Power on your Universal WiFi Hub using **either** of these methods:

- Connect the AC Adapter cable to a device. Make sure that the device where you connect the AC Adapter cable is powered on.
- Connect the WiFi Hub to an electrical outlet with the included power adapter.

Note: It will take about 50 seconds to complete the boot-up sequence. When complete, PWR (power) LED will be active, and the WLAN Activity LED will be blinking to show the WLAN interface is enabled.

Step 2: Use the included RJ-45 Ethernet cable to connect the WiFi Hub with your device such as Blu-ray player, HDTV, or game console.

Step 3: Refer to your wireless router's user manual to enable the WPS function, then press "WPS" button on the back of WiFi Hub.

Your installation is complete. If asked for the type of connection, make sure "WIRED" is selected on your device.



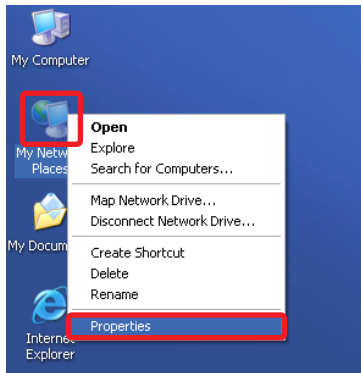
Installation without WPS - Windows XP

Step 1: Turn off your computer's wireless connection (if applicable) and disconnect the Ethernet cable currently connect to your computer (if applicable).

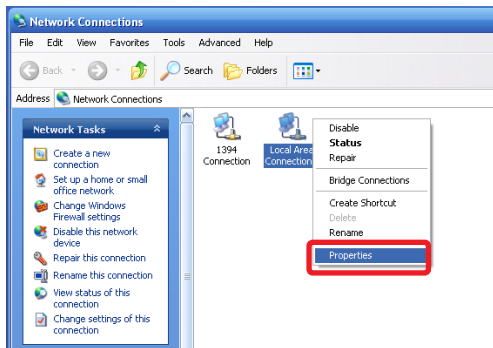
Step 2: Use the included RJ-45 Ethernet cable to connect the WiFi Hub with your computer.

Step 3: Set your computer with a static IP address.

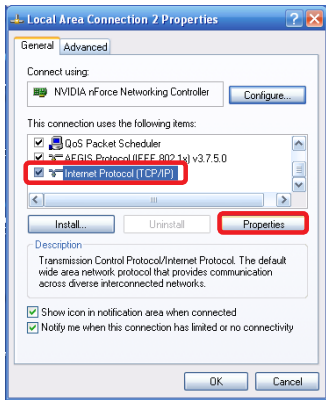
a. Right click on **“My Network Places”** and select **“Properties”**.



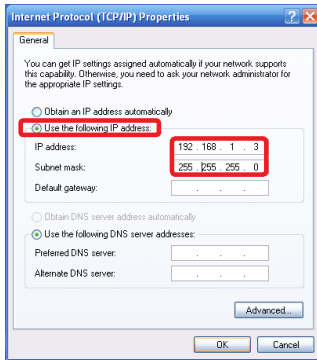
- b. Next, right click on **“Local Area Connection”** and select **“Properties”**.



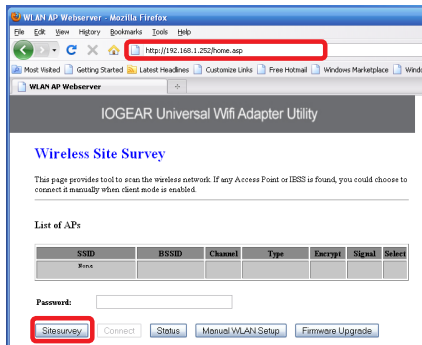
- c. Select **“Internet Protocol (TCP/IP)”** then select **“Properties”**.



- D. Select **“Use the following IP address”** and enter 192.168.1.3 in the IP address section. Next enter 255.255.255.0 in the Subnet Mask. Click OK.



Step 4: Open your web browser and enter **192.168.1.252**. This will bring up the configuration utility. Click **“Site Survey”** to scan for your wireless network.



Step 5: Select the AP you want to connect to and enter the password if the network is secured. Click the **“Connect”** button to establish the connection.

If your network security settings are set to not broadcast your SSID, then you will need to manually set up the SSID and the wireless security (WEP or WPA). (Please see Page. 37)

IOGEAR Universal Wifi Adapter Utility

Wireless Site Survey

This page provides tool to scan the wireless network. If any Access Point or IBSS is found, you could choose to connect it manually when client mode is enabled.

List of APs

SSID	BSSID	Channel	Type	Encrypt	Signal	Select
office	00:0E:30:1A:49	9 (B)	AP	WEP	52	

Password:

IOGEAR Universal Wifi Adapter Utility

Connection Successful!

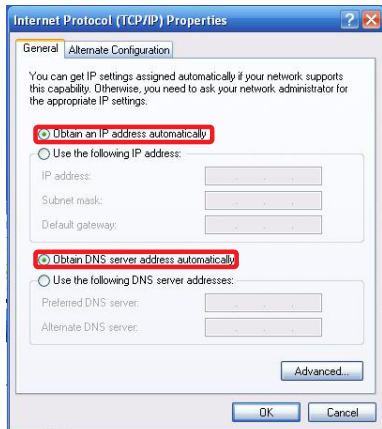
Step 6: Close your browser and change the network settings on your computer back to DHCP (Obtain an IP address Automatically & Obtain DNS server address automatically). Refer to steps 3a through 3d. Also do not forget to enable your wireless connection if you disabled it.

Step 7: Disconnect the Ethernet cable from your computer.

Step 8: Use the included RJ-45 Ethernet cable to connect the WiFi Hub with your device such as a Blu-Ray player, HDTV, or game console.

Step 9: Power on your Hub using the AC adapter.

The installation is complete. Your device is now wireless. If the device asks for the type of internet connection, make sure "WIRED" is selected.



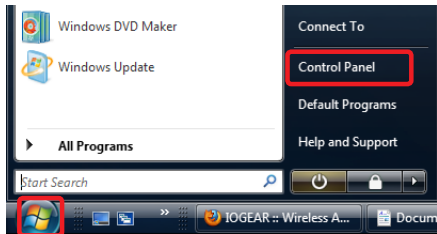
Installation without WPS - Windows Vista

Step 1: Turn off your computer's wireless connection (if applicable) and disconnect the Ethernet cable currently connect to your computer (if applicable).

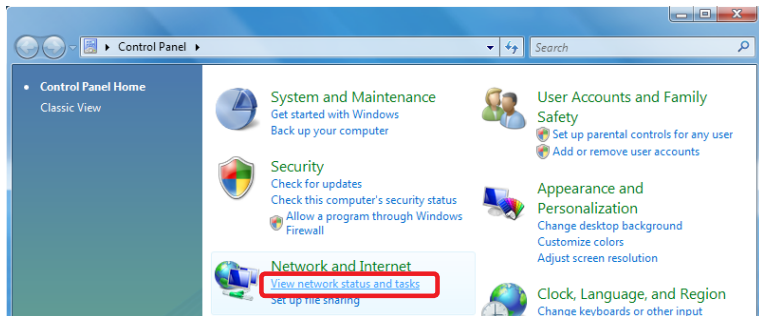
Step 2: Use the included RJ-45 Ethernet cable to connect the WiFi Hub with your computer.

Step 3: Set your computer with a static IP address.

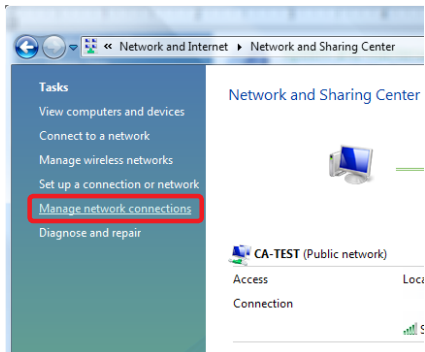
a. Click the start button, the click on Control Panel.



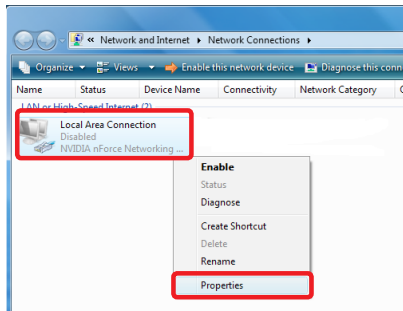
b. Under Network and Internet, click **“View network status and tasks”**.



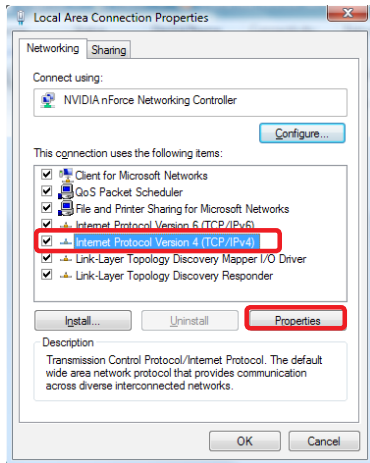
c. Under Tasks in the left pane, click **“Manage network connections”**.



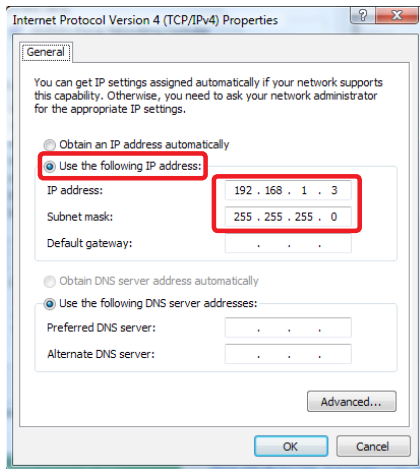
d. Next, right click on **“Local Area Connection”** and click **“Properties”**.



- e. Next, select **“Internet Protocol Version 4 (TCP/IPv4)”** and click **“Properties”**



- f. Select **“Use the following IP address”** and enter **192.168.1.3** in the IP address section. Next enter **255.255.255.0** in the Subnet Mask. Click OK.



Step 4: Open your web browser and enter **192.168.1.252**. This will bring up the configuration utility. Click **“Site Survey”** to scan for your wireless network.

WLAN AP Webserver - Mozilla Firefox

File Edit View History Bookmarks Tools Help

http://192.168.1.252/home.asp

WLAN AP Webserver

IOGEAR Universal Wifi Adapter Utility

Wireless Site Survey

This page provides tool to scan the wireless network. If any Access Point or IESS is found, you could choose to connect it manually when client mode is enabled.

List of APs

SSID	BSSID	Channel	Type	Encrypt	Signal	Select
None						

Password:

[Site survey](#) [Connect](#) [Status](#) [Manual WLAN Setup](#) [Firmware Upgrade](#)

Step 5: Select the AP you want to connect to and enter the password if the network is secured. Click the **“Connect”** button to establish the connection.

If your network security settings are set to not broadcast your SSID, then you will need to manually set up the SSID and the wireless security (WEP or WPA). (Please see Page. 37)

IOGEAR Universal Wifi Adapter Utility

Wireless Site Survey

This page provides tool to scan the wireless network. If any Access Point or IBSS is found, you could choose to connect it manually when client mode is enabled.

List of APs

SSID	BSSID	Channel	Type	Encrypt	Signal	Select
Office	00:0f:38:b4:9	9 (B)	AP	WEP	52	

Password:

[Site survey](#) [Connect](#) [Status](#) [Manual WLAN Setup](#) [Firmware Upgrade](#)

IOGEAR Universal Wifi Adapter Utility

Connection Successful

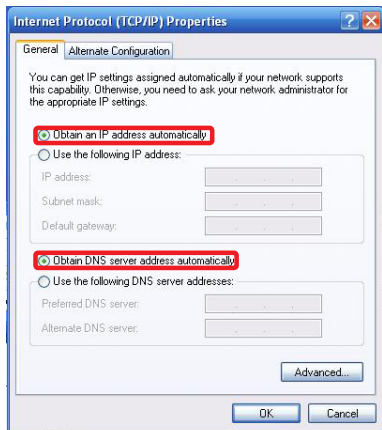
Step 6: Close your browser and change the network settings on your computer back to DHCP (Obtain an IP address Automatically & Obtain DNS server address automatically). Refer to steps 3a through 3d. Also do not forget to enable your wireless connection if you disabled it.

Step 7: Disconnect the Ethernet cable from your computer.

Step 8: Use the included RJ-45 Ethernet cable to connect the WiFi Hub with your device such as a Blu-Ray player, HDTV, or game console.

Step 9: Power on your Hub using the AC adapter.

The installation is complete. Your device is now wireless. If the device asks for the type of internet connection, make sure "WIRED" is selected.



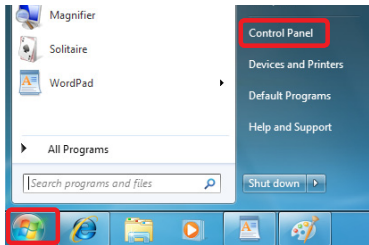
Installation without WPS - Windows 7

Step 1: Turn off your computer's wireless connection (if applicable) and disconnect the Ethernet cable currently connect to your computer (if applicable).

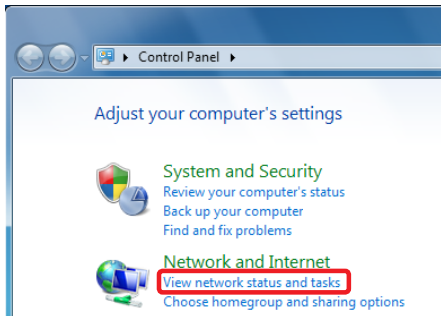
Step 2: Use the included RJ-45 Ethernet cable to connect the WiFi Hub with your computer.

Step 3: Set your computer with a static IP address.

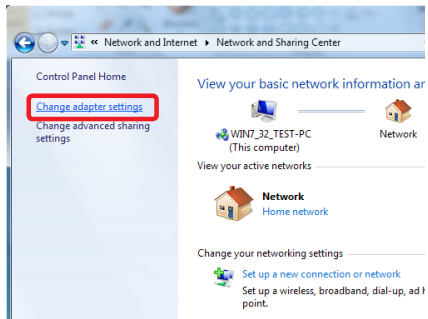
a. Click the start button, the click on **Control Panel**.



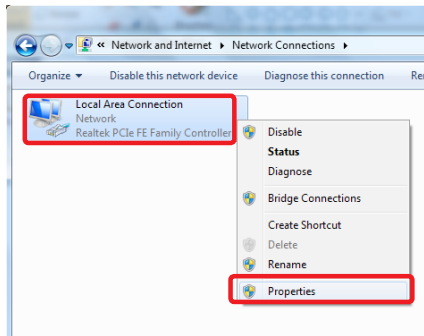
b. Under Network and Internet, click **“View network status and tasks”**.



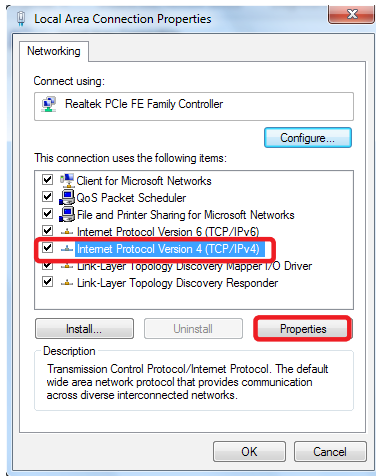
c. Under Tasks in the left pane, click **“Change Adapter Settings”**.



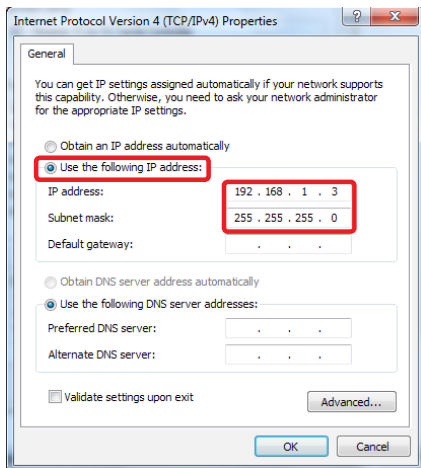
d. Next, right click on **“Local Area Connection”** and click **“Properties”**.



e. Next, select **“Internet Protocol Version 4 (TCP/IPv4)”** and click **“Properties”**



- f. Select **“Use the following IP address”** and enter **192.168.1.3** in the IP address section. Next enter **255.255.255.0** in the Subnet Mask. Click OK.



Step 4: Open your web browser and enter **192.168.1.252**. This will bring up the configuration utility. Click **“Site Survey”** to scan for your wireless network.

The screenshot shows a Mozilla Firefox browser window titled "WLAN AP Webserver - Mozilla Firefox". The address bar contains "http://192.168.1.252/home.asp", which is highlighted with a red rectangle. Below the browser window, the webpage content is visible. The title is "IOGEAR Universal Wifi Adapter Utility". The main heading is "Wireless Site Survey". Below this, there is a paragraph: "This page provides tool to scan the wireless network. If any Access Point or IBSS is found, you could choose to connect it manually when client mode is enabled." Underneath is a section titled "List of APs" with a table. The table has columns: SSID, BSSID, Channel, Type, Encrypt, Signal, and Select. The SSID column contains the text "None". Below the table is a "Password:" label followed by an empty input field. At the bottom, there are five buttons: "Site Survey" (highlighted with a red rectangle), "Connect", "Status", "Manual WLAN Setup", and "Firmware Upgrade".

SSID	BSSID	Channel	Type	Encrypt	Signal	Select
None						

Step 5: Select the AP you want to connect and enter the password if the network is secured. Click **“Connect”** button to establish the connection.


If your network security settings are set to not broadcast your SSID, then you will need to manually set up the SSID and the wireless security (WEP or WPA). (Please see Page. 37)

IOGEAR Universal Wifi Adapter Utility

Wireless Site Survey

This page provides tool to scan the wireless network. If any Access Point or IBSS is found, you could choose to connect it manually when client mode is enabled.

List of APs

SSID	BSSID	Channel	Type	Encrypt	Signal	Select
Office	00:0E:3B:3E:49	9 (B)	AP	WEP	52	

Password:

IOGEAR Universal Wifi Adapter Utility

Connection Successful!

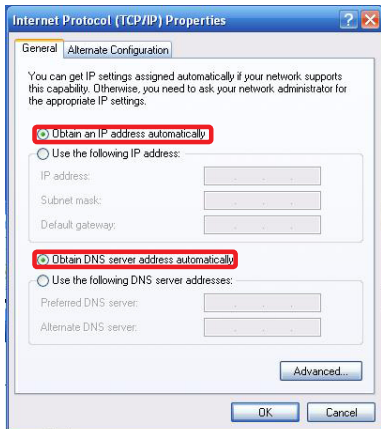
Step 6: Close your browser and change the network settings on your computer back to DHCP (Obtain an IP address Automatically & Obtain DNS server address automatically). Refer to steps 3a through 3d. Also do not forget to enable your wireless connection if you disabled it.

Step 7: Disconnect the Ethernet cable from your computer.

Step 8: Use the included RJ-45 Ethernet cable to connect the WiFi Hub with your device such as a Blu-Ray player, HDTV, or game console.

Step 9: Power on your Hub using the AC adapter.

The installation is complete. Your device is now wireless. If the device asks for the type of internet connection, make sure "WIRED" is selected.



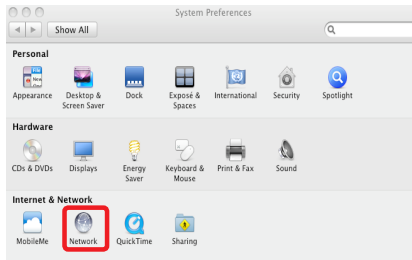
Installation without WPS - Mac

Step 1: Turn off your computer's wireless connection (if applicable) and disconnect the Ethernet cable currently connect to your computer (if applicable).

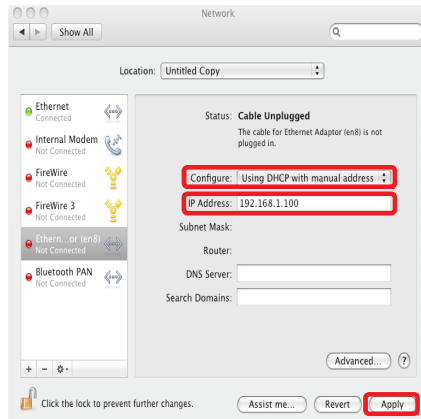
Step 2: Use the included RJ-45 Ethernet cable to connect the WiFi Hub with your computer.

Step 3: Set your computer with a static IP address.

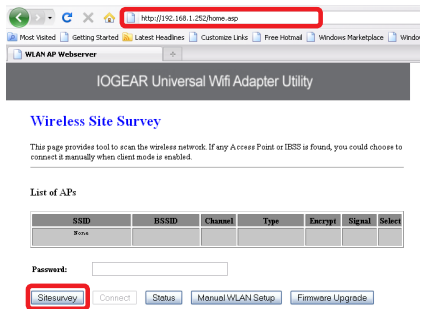
a. Open system preferences and select "Network".



- b. Select your Ethernet connection in the left pane. Next change configure to Manual and enter IP address 192.168.1.100 and Subnet Mask 255.255.255.0. Remove any entries in the Router and DNS boxes then click Apply.



Step 4: Open your web browser and enter **192.168.1.252**. This will bring up the configuration utility. Click **“Site Survey”** to scan for your wireless network.



The screenshot shows a web browser window with the address bar containing `http://192.168.1.252/home.asp`. The page title is "IOGEAR Universal Wifi Adapter Utility". Below the title is a section titled "Wireless Site Survey" with a sub-header "List of APs". A table with columns "SSID", "BSSID", "Channel", "Type", "Encrypt", "Signal", and "Select" is present. Below the table is a "Password:" field. At the bottom, there are several buttons: "Site Survey" (highlighted with a red box), "Connect", "Status", "Manual WLAN Setup", and "Firmware Upgrade".

SSID	BSSID	Channel	Type	Encrypt	Signal	Select
None						

Step 5: Select the AP you want to connect to and enter the password if the network is secured. Click the **“Connect”** button to establish the connection.


If your network security settings are set to not broadcast your SSID, then you will need to manually set up the SSID and the wireless security (WEP or WPA). (Please see Page. 37)

IOGEAR Universal Wifi Adapter Utility

Wireless Site Survey

This page provides tool to scan the wireless network. If any Access Point or IBSS is found, you could choose to connect it manually when client mode is enabled.

List of APs

SSID	BSSID	Channel	Type	Encrypt	Signal	Select
office	00:0f:88:30:b4:9	9 (B)	AP	WEP	52	


Password:

Site survey Connect Status Manual WLAN Setup Firmware Upgrade

IOGEAR Universal Wifi Adapter Utility

Connection Successful!

OK



Step 6: Close your browser and change the network settings on your computer back to DHCP. Refer to steps 3a through 3b.

Step 7: Disconnect the Ethernet cable from your computer.

Step 8: Use the included RJ-45 Ethernet cable to connect the WiFi Hub with your device such as a Blu-Ray player, HDTV, or game console.

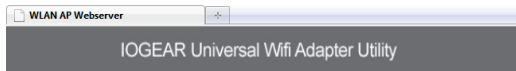
Step 9: Power on your Hub using the AC adapter.

The installation is complete. Your device is now wireless. If the device asks for the type of internet connection, make sure “WIRED” is selected.

Manual Set Up

If your network security settings are set to not broadcast your SSID, then you will need to manually set up the SSID and the wireless security (WEP or WPA).

Step 1: Click “Manual WLAN Setup” to start the Setup Wizard



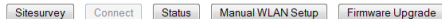
Wireless Site Survey

This page provides tool to scan the wireless network. If any Access Point or IBSS is found, you could choose to connect it manually when client mode is enabled.

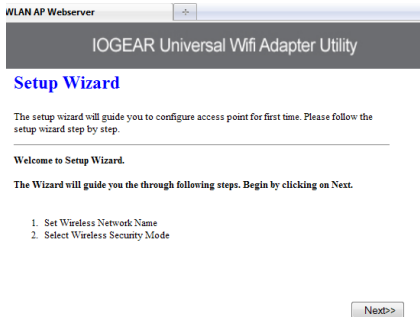
List of APs

SSID	BSSID	Channel	Type	Encrypt	Signal	Select
None						

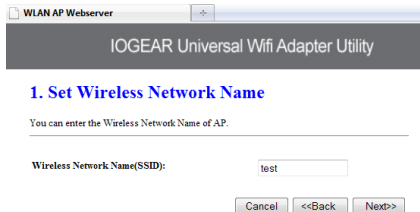
Password:



Step 2: Click "Next"



Step 3: Enter your networks SSID and click "Next"



Step 4: Enter your encryption information and click "Finished"



2. Select Wireless Security Mode

This page allows you setup the wireless security. Turn on WEP or WPA by using Encryption Keys could prevent any unauthorized access to your wireless network.

Encryption: WPA2 ▾

Pre-Shared Key Format:

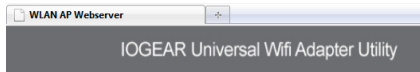
Passphrase ▾

Pre-Shared Key:

1234567890

Cancel <<Back Finished


Step 5: The Universal Wi-Fi Hub will now reboot.



Settings Changed Successfully!

Do not turn off or reboot the Device during this time.

Please wait 13 seconds ...



Step 6: Close your browser and change the network settings on your computer back to DHCP (Obtain an IP address Automatically & Obtain DNS server address automatically). Also do not forget to enable your wireless connection if you disabled it.

Step 7: Disconnect the Ethernet cable from your computer.

Step 8: Use the included RJ-45 Ethernet cable to connect the WiFi Hub with your device such as a Blu-Ray player, HDTV, or game console.

Step 9: Power on your Hub using the AC adapter.

The installation is complete. Your device is now wireless. If the device asks for the type of internet connection, make sure “WIRED” is selected.

Firmware Upgrade

Note: If a firmware update is available, it will be posted on [iogear.com](http://www.iogear.com). Please check <http://www.iogear.com/support/dm/>

Step 1: Turn off your computer's wireless connection (if applicable) and disconnect the Ethernet cable currently connect to your computer (if applicable).

Step 2: Use the included RJ-45 Ethernet cable to connect the WiFi Hub with your computer.

Step 3: Set your computer with a static IP address.

Step 4: Open your web browser and enter **192.168.1.252**. This will bring up the configuration utility. Click the **"Firmware Upgrade"** button.

WLAN AP Webserver

IOGEAR Universal Wifi Adapter Utility

Wireless Site Survey

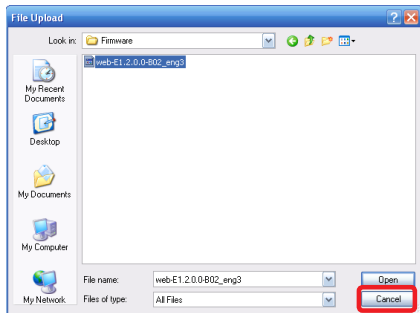
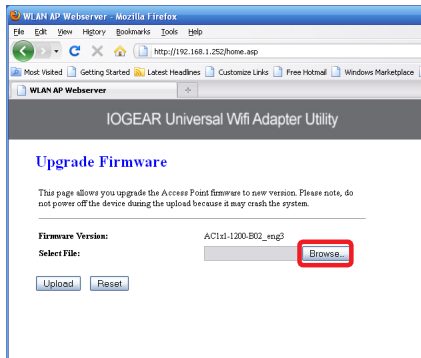
This page provides tool to scan the wireless network. If any Access Point or IBSS is found, you could cho connect it manually when client mode is enabled.

List of APs

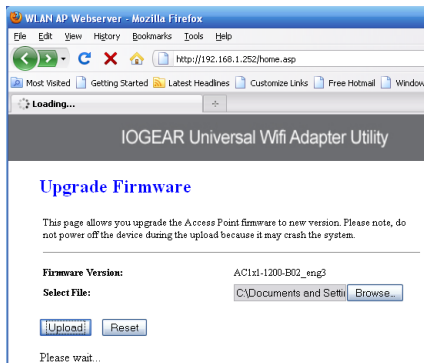
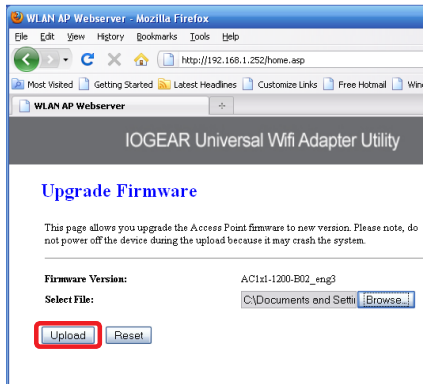
SSID	BSSID	Channel	Type	Encrypt	Signal	S
None						

Password:

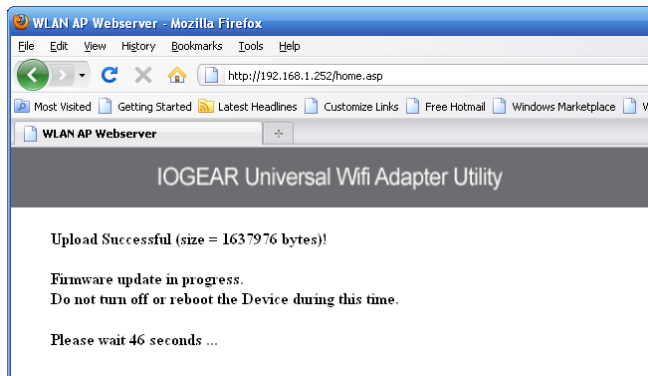
Step 5: Click **“Browse”** and located your firmware file, select it, and click **“Open”**.



Step 6: Click **“Upload”** to start the firmware upgrade process.



Firmware update complete. Wait for the device to reboot before disconnecting.



Once the device is finished rebooting, you will see a status screen. Check your settings. After a firmware upgrade, the Universal Wifi Hub may reset back to factory settings and need to be set up for your network again.

Access Point Status

This page shows the current status and some basic settings of the device.

System	
Uptime	0day:0h:2m:46s
Firmware Version	AC1x1-1200-B02_eng1
Build Time	Fri Nov 19 15:48:58 CST 2010
Wireless Configuration	
Mode	Infrastructure Client
Band	2.4 GHz (B+G+N)
SSID	TV
Channel Number	6
Encryption	Disabled
BSSID	00:00:00:00:00:00
Status	Scanning
TCP/IP Configuration	
Attain IP Protocol	Fixed IP
IP Address	192.168.1.252
Subnet Mask	255.255.255.0
Default Gateway	0.0.0.0
DHCP Server	Disabled
MAC Address	00:02:72:97:89:7f

SiteSurvey

Federal Communications Commission (FCC) Statement

This equipment has been tested and found to comply with the limits for a Class B digital device, pursuant to Part 15 of the FCC Rules. These limits are designed to provide reasonable protection against harmful interference in a residential setting. This product generates, uses, and can radiate radio frequency energy and, if not installed and used as directed, it may cause harmful interference to radio communications. Although this product complies with the limits for a Class B digital device, there is no guarantee that interference will not occur in a particular installation.

CE Compliance

This device has been tested and found to comply with the following European Union directives: Electromagnetic Capability (89/336/EMC), Low Voltage (73/23/EEC) and R&TTED (1999/5/EC).

SJ/T 11364-2006

The following contains information that relates to China.

部件名称	有毒有害物质或元素					
	铅 (Pb)	汞 (Hg)	镉 (Cd)	六价 (Cr(VI))	多溴联苯 (PBB)	多溴二苯醚 (PBDE)
电器部件	●	○	○	○	○	○
机构部件	○	○	○	○	○	○

○:表示该有毒有害物质在该部件所有均质材料中的含量均在SJ/T 11363-2006规定的限量要求之下。

●:表示符合欧盟的豁免条款，但该有毒有害物质至少在该部件的某一均质材料中的含量超出SJ/T 11363-2006的限量要求。

x:表示该有毒有害物质至少在该部件的某一均质材料中的含量超出SJ/T 11363-2006的限量要求。



Limited Warranty

IN NO EVENT SHALL THE DIRECT VENDOR'S LIABILITY FOR DIRECT, INDIRECT, SPECIAL, INCIDENTAL OR CONSEQUENTIAL DAMAGES RESULTING FROM THE USE OF THE PRODUCT, DISK, OR ITS DOCUMENTATION EXCEED THE PRICE PAID FOR THE PRODUCT.

The direct vendor makes no warranty or representation, expressed, implied, or statutory with respect to the contents or use of this documentation, and especially disclaims its quality, performance, merchantability, or fitness for any particular purpose. The direct vendor also reserves the right to revise or update the device or documentation without obligation to notify any individual or entity of such revisions, or updates. For further inquiries please contact IOGEAR.

WE'RE HERE TO HELP YOU! NEED ASSISTANCE SETTING UP THIS PRODUCT?

Make sure you:

1. Use the live chat at www.iogear.com to try and solve any issues you may be having with the product
2. Visit the Tech Info Library/FAQ on www.iogear.com (under the Support tab)
3. Call the tech support line at 1(866) 946-4327 (U.S. only) or (949) 453-8782.

Contact

IOGEAR

19641 Da Vinci

Foothill Ranch, CA 92610

P 949.453.8782

F 949.453.8785

Visit us at: www.iogear.com

© 2011 IOGEAR® Part No. M1200

IOGEAR, the IOGEAR logo, are trademarks or registered trademarks of IOGEAR. Microsoft and Windows are registered trademarks of Microsoft Corporation. All other brand and product names are trademarks or registered trademarks of their respective holders. IOGEAR makes no warranty of any kind with regards to the information presented in this document. All information furnished here is for informational purposes only and is subject to change without notice. IOGEAR assumes no responsibility for any inaccuracies or errors that may appear in this document.





About Us

FUN

IOGEAR offers connectivity solutions that are innovative, fun, and stylish, helping people enjoy daily life using our high technology products.

GREEN

IOGEAR is an environmentally conscious company that emphasizes the importance of conserving natural resources. The use of our technology solutions helps reduce electronic waste.

Free Manuals Download Website

<http://myh66.com>

<http://usermanuals.us>

<http://www.somanuals.com>

<http://www.4manuals.cc>

<http://www.manual-lib.com>

<http://www.404manual.com>

<http://www.luxmanual.com>

<http://aubethermostatmanual.com>

Golf course search by state

<http://golfingnear.com>

Email search by domain

<http://emailbydomain.com>

Auto manuals search

<http://auto.somanuals.com>

TV manuals search

<http://tv.somanuals.com>