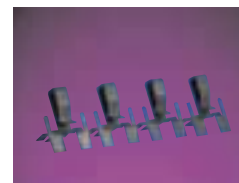


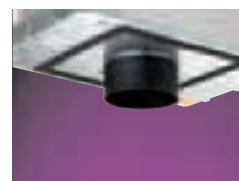
**MBCLP:** Mounting bar clips to accommodate grid and T-bar ceiling systems. Clips push onto mounting bars and allow platforms to be installed in 24" O.C. grids. One package contains 40 clips (enough to mount 10 platforms).



**MRSKT:** Field-replaceable MR16 socket with lamp shield and keyed quick-connect.



**PLE5:** Plaster lip extensions allow IRIS Platforms to be installed in ceilings up to 2" thick. They are field installed onto the platform. For ceilings less than 2" thick, PLE's are easily field cut for optimal installation and are suitable for all elements. One-piece spun steel (22 gauge) assures round aperture. Black polyester powder coated surfaces. Ideal for plaster or skim coat ceilings. PLE5 fits P5 and PN5.



**FMC5:** A field installed Flush Mount Collar\* which allows the element flange to sit flush with the finished ceiling. Collar installs onto plaster lip when platform is mounted. After ceiling is installed finish contractor adjusts collar to proper height and applies skim coat up to edge of collar. Collar adjusts for any ceiling thickness between 5/8" to 1". Lensed Wall Wash and Shower elements should not be used with FMC as they will be difficult to relamp. Self Flanged elements may not be used with FMC accessory. FMC5 fits P5 and PN5.



#### 2" LENSES FOR MR16

**LLNR:** Linear spread lens  
**LSF:** Soft-focus lens  
**LSPD:** Spread lens  
**LUV:** Ultraviolet reducing lens  
**L27K:** 2700K dichroic filter warms an MR16 tungsten halogen 3000°K light source to a warmer incandescent color temperature without dimming.  
**LLPINK:** Light Pink  
**LLSTRAW:** Light Straw  
**LDAY:** Daylight Filter  
**LPLAV:** Pale Lavender  
**LSPINK:** Surprise Pink

#### 4 1/4" LENSES FOR PAR36/AR111

**L4LNR:** Linear spread lens  
**L4SF:** Soft-focus lens  
**L4SPD:** Spread lens  
**L4UV:** Ultraviolet reducing lens  
**L4LPINK:** Light Pink  
**L4LSTRAW:** Light Straw  
**L4DAY:** Daylight Filter  
**L4PLAV:** Pale Lavender  
**L4SPINK:** Surprise Pink



#### LOUVERS

**LHEX:** Matte black hex cell louver provides 45° cutoff to lamp.

## Free Manuals Download Website

<http://myh66.com>

<http://usermanuals.us>

<http://www.somanuals.com>

<http://www.4manuals.cc>

<http://www.manual-lib.com>

<http://www.404manual.com>

<http://www.luxmanual.com>

<http://aubethermostatmanual.com>

Golf course search by state

<http://golfingnear.com>

Email search by domain

<http://emailbydomain.com>

Auto manuals search

<http://auto.somanuals.com>

TV manuals search

<http://tv.somanuals.com>