



See the possibilities

User's Manual

EN Camera Series

TS(C)-4032EN

TS(C)-2030EN

TS(C)-2076EN

TS(C)-1327EN

Progressive Scan Cameras

*Document Version: D
Document P/N: 10490*

Disclaimer

Notice

The material contained in this manual consists of information that is proprietary to JAI Inc., and may only be used by the purchasers of the product. JAI Inc. makes no warranty for the use of its product and assumes no responsibility for any errors which may appear or for damages resulting from the use of the information contained herein. JAI Inc. reserves the right to make changes without notice.

Microsoft, Windows XP, Windows 2000, Windows 98, Windows NT, and Windows Explorer are either registered trademarks or trademarks of Microsoft Corporation in the United States and/or other countries.

Warranty

For information about the warranty, please contact your factory representative.

Certifications

CE Compliance

The EN Camera series of cameras have been certified to conform to the requirements of Council Directive 89/336/EC for electromagnetic compatibility and to comply with the following European Standards:

Emissions:EN 55022A: 1998 + A1: 2000 + A2: 2003

Immunity:EN55024: 1998 + A1: 2001 + A2: 2003

All JAI Inc. products bearing the CE mark have been declared to be in conformance with the applicable EEC Council Directives. However, certain factory-installed options or customer-requested modifications may compromise electromagnetic compatibility and affect CE compliance. Please note that the use of interconnect cables that are not properly grounded and shielded may affect CE compliance.

Contact JAI Inc. Applications Engineering Department for further information regarding CE compliance.

FCC

This equipment has been tested and found to comply with the limits for a Class A digital device, pursuant to Part 15 of the FCC Rules. These limits are designed to provide reasonable protection against harmful interference when the equipment is operated in a commercial environment. This equipment generates, uses and can radiate radio frequency energy and, if not installed and used in accordance with the instruction manual, may cause harmful interference to radio communications. Operation of this equipment in a residential area may cause harmful interference, in which case the user will be required to correct the interference at his own expense.

WARNING

Changes or modifications to this unit not expressly approved by the party responsible for FCC compliance could void the user's authority to operate the equipment.

EN Camera Series Operation Manual

JAI Inc.

625 River Oaks Parkway

San Jose, CA 95134

Tel: (408) 383-0300

Tel: (800) 445-5444

Fax: (408) 383-0301

E-mail: trafficsales.americas@jai.com

trafficsales.emea@jai.com

www.jai.com

December 19, 2008

Table of Contents

1	Introduction.....	11
1.1	Scope of this Manual	11
1.2	Related Documents	11
1.3	Key Functions of the EN Camera	11
1.4	Product Description	12
2	Getting Started.....	13
2.1	Required Equipment.....	13
2.2	Network Settings.....	13
2.2.1	Default Network Settings for the EN Camera.....	13
2.2.2	Changing the IP Address of the EN Camera	13
2.3	Installing the Required Software	14
3	Tutorial	15
3.1	Image Capturing.....	15
3.1.1	Start Up the EN Setup Software	15
3.1.2	Camera Properties.....	15
3.1.3	Live Image Capturing/Focusing.....	16
3.1.4	Image Properties	20
3.2	Image Transfer	21
3.2.1	FTP Image Transfer	21
3.3	ADR (Automatic Dynamic Range) Control	21
3.3.1	Light Sensor Connection	21
3.3.2	Flash Nighttime Light Control.....	23
3.4	Time Synchronization	24
3.5	Static IP Address Assignment.....	24
3.5.1	DHCP Client.....	25
3.6	Maintenance	26
3.6.1	Debug Counters	26
3.6.2	Firmware Upgrade	27
3.6.3	RS-232 PowerPC Debug Port	28
4	Uploading the Firmware	31
4.1	To Verify Version Numbers for all Firmware	31
4.1.1	RS-232 PPC Debug Serial Port/Telnet	31
4.1.2	EN Setup Software	31
4.2	Updating the EN Application Software	31
4.3	Updating the FPGA Bitfile	32
4.4	Updating the Lib/Drv File	32
4.5	Updating the OS Image.....	32
4.6	Updating the Camera's H8 Firmware	32
4.7	Updating the Firmware Manually without ENSetup software	33
5	Connectors and Cables.....	34
5.1	Connector Pin Configurations.....	34
5.1.1	12-Pin Connector.....	34
5.1.2	High-Density 26-Pin D-Sub Connector.....	34
5.1.3	10/100 BaseT Ethernet.....	35
5.2	RS-232 Communication Cable.....	36
5.3	Power Supplies and Power Cable Setup	36
5.3.1	Power Supplies	36
5.3.2	JAI Inc. Power Cables	36
5.3.3	Building Your Own Power Cable	37
5.3.4	Attaching the Power Cable to the Connector	37

EN Camera Series

5.4	Attaching the Camera Lens	37
6	Camera Features	38
6.1	Progressive Scanning	38
6.2	Asynchronous Reset	38
6.3	ADR (Automatic Dynamic Range) Control	42
6.3.1	Camera ADR Control Related Registers	42
6.3.2	Electronic Shutter	43
6.3.3	Video Amplifier Gain Control	45
6.3.4	HDR Mode (4032EN Only)	46
6.4	Flash/Nighttime Light Control	47
6.5	External Control	48
6.5.1	RS-485	48
6.5.2	Ethernet	48
6.6	Color Filter Array (Color Version)	48
6.7	Image Formats	49
6.7.1	TIF Format	49
6.7.2	JPEG Format	50
6.8	Image Transfer	50
6.8.1	UDP Image Transfer on Setup Channel	50
6.8.2	TCP Message-Based Image Transfer on the Control Channel	50
6.9	Image Buffering	51
6.10	FTP	51
6.11	NTP (Network Time Protocol)	52
7	Frequently Asked Questions and Troubleshooting	53
7.1	Problem 1: What Password Allows Login from a RS232 Debug Port or Telnet Session to the EN Camera?	53
7.2	Problem 2: What is a Password to Start the EN Setup Software?	53
7.3	Problem 3: Does the EN Color Camera Produce a 24-bit Color Image?	53
7.4	Problem 4: EN Setup Software Does Not Find Any Camera in the Network	53
7.5	Problem 5: EN Setup Software Found the Camera, But the Video Image is too Dark or Just Black	53
7.6	Problem 6: TTL Trigger/Ethernet Trigger/Serial RS-485 Trigger Does not Generate Trigger	54
7.7	Problem 7: JPEG Image is Either Corrupt or Not a Full-Size Image	54
7.8	Problem 8: EN Camera Does Not Send any FTP Image to the FTP Server	54
7.9	Problem 9: FTP servers switch between primary server and second server, even if the hard disk is not full.	54
7.10	Problem 10: The EN Camera Does not connect to light sensor.	55
7.11	Problem 11: Light Sensor Connection is Not reliable.	55
7.12	Problem 12: IO Board Communication Error	55
7.13	Problem 13: Night Time Image is Too Bright and License Plate is Whited Out or Saturated	56
7.14	Problem 14: The Day Time Image is too Bright and Whites Out or Saturates the License Plate	56
7.15	Problem 15: Flash_Errr Appears in the Error Register	56
7.16	Problem 16: Timestamp is Not Set to Current Local Time	56
7.17	Information and Support Resources	56
8	Appendix	57
8.1	Specifications	57
8.2	Physical Dimensions	60
8.3	Spectral Response	61
9	Configurable Order Options for EN Cameras	66
9.1	OP-IR	66
9.2	OP-RED	66

List of Figures

Figure 1.	Typical Equipment Setup	13
Figure 2.	User Administration	15
Figure 3.	Properties	15
Figure 4.	Camera Properties	16
Figure 5.	Live Image Capturing	17
Figure 6.	Focus Bar	17
Figure 7.	Measuring Box Position	18
Figure 8.	Half Size Image Position	18
Figure 9.	Quad Size Image Button	19
Figure 10.	Hardware Trigger Sniffing Mode	19
Figure 11.	12-Pin Connector	34
Figure 12.	26-Pin HD-Sub Connector	34
Figure 13.	Serial Communications Cable RS-232B-12 (JAI Inc. part number: 310 132 19)	36
Figure 14.	12P-02S Interface Cable (optional)	37
Figure 15.	Timing Chart 1 (TS(C)-2030EN)	39
Figure 16.	Timing Chart 2 (TS(C)-1327EN)	40
Figure 17.	Timing Chart 3 (TS(C)-4032EN)	41
Figure 18.	CFA Pattern	49
Figure 19.	Enable TCP Image	51
Figure 20.	Physical Dimensions TS(C)-2030EN/TS(C)-2076EN/TS(C)-1327EN	60
Figure 21.	Physical Dimensions TS(C)-4032EN	60
Figure 22.	Spectral Response (B/W CCD)	61
Figure 23.	Spectral Response (B/W CCD) TS-1327EN	61
Figure 24.	Spectral Response (B/W CMOS) TS-4032EN	62
Figure 25.	Spectral Response (Color CCD) TSC-2030EN/TSC-2076EN	62
Figure 26.	Spectral Response (Color CCD) TSC-1327EN	63
Figure 27.	Spectral Response (Color CMOS) TSC-4032EN	63
Figure 28.	IR Cut Filter Response for monochrome cameras	64
Figure 29.	Red Filter Optical Characteristics for monochrome cameras	64
Figure 30.	Color filter spectrum response of TSC-1327EN	65
Figure 31.	Color filter spectrum response of TSC-4032EN	65

List of Tables

Table 1	Firmware Names and Descriptions	27
Table 2	12-Pin Connector	34
Table 3	D-Sub Connector Pinout Configuration (10226-6212 VC)	34
Table 4	10/100 BaseT Ethernet Pinout Configuration	35
Table 5	Lens Mount Format	37
Table 6	EN Exposure Times.....	44
Table 7	Factory Default Settings of the ADR Shutter Min. and Max.	44
Table 8	Gain Table (BW EN Camera)	45
Table 9	Gain Table (Color EN Camera)	45
Table 10	Factory Default Storage Setup of Image Buffering	51
Table 11	EN Camera Series Product Specifications Tables	57

1. Operation Manual Introduction

1 Introduction

1.1 Scope of this Manual

This manual covers the operation of the following traffic control cameras: the TS-4032EN, TSC-4032EN, TS-2030EN, TSC-2030EN, TS-2076EN, TSC-2076EN, TS-1327EN, and TSC-1327EN. The remainder of this manual will use the term “EN camera” to refer to features that apply to all of these cameras. Specific model numbers will be used to describe features or specifications that apply only to certain models.

For information on how to operate the associated software, please see the software manual. Unless specifically noted, all information in this manual is relevant to both the monochrome and color versions of the EN cameras.

1.2 Related Documents

- Lane Controller to Ethernet Network Camera Interface Document, doc. number 69-1198
- Vehicle Imaging System 300/400/500 Installation Manual.

1.3 Key Functions of the EN Camera

- Sensitive high-speed progressive scan CCD camera
(1" format for the TS(C)-2030EN and the TS(C)-2076EN)
(2/3" format for the TS(C)-1327EN)
(43.3mm format for the TS(C)-4032EN)
- 10/100 Mbit BaseT Ethernet interface
- External event trigger function for full-frame single/multiple image capture
- Triggering capability using Ethernet, TTL or serial (RS-485)
- Built-in PowerPC processor running Linux O/S
- 64MB SDRAM for image buffering
- Static/DHCP support for TCP/IP configuration
- Image transfer over Ethernet using FTP over TCP/IP
- Frame date/time stamp facility with user-definable text strings
- High quality JPEG encoding
- Automatic dynamic range control and maximum contrast images using the optional Smart Light Sensor

1.4 Product Description

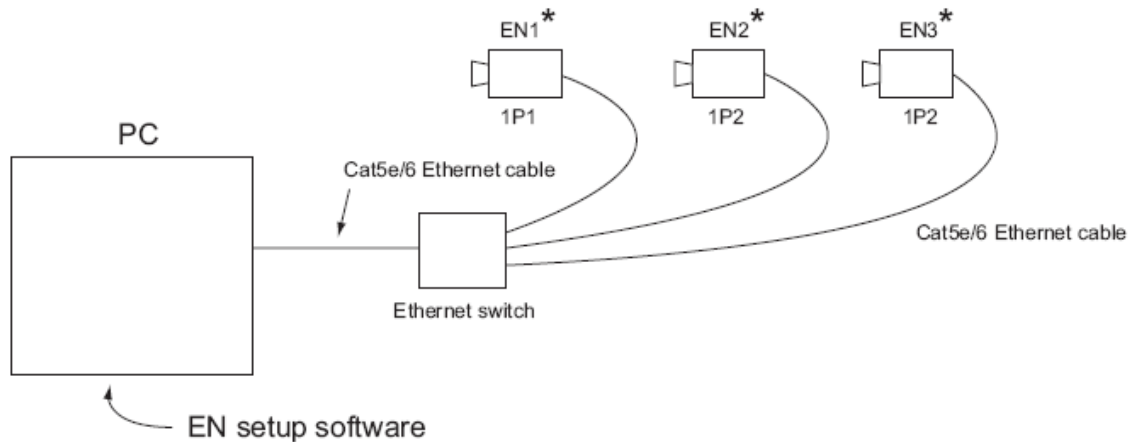
The EN camera is an all-in-one progressive scan and Ethernet CCD camera, with a built in image capture/storage function, and image-processing software using a built-in PowerPC processor. The EN Camera performs JPEG compression and automatic FTP transmission of captured images to a file server.

Typical applications include Automatic Number Plate Reader (ANPR/ LPR), vehicle fingerprints (vehicle matching technology), optical character recognition (OCR), and region-of-interest extraction (ROI), as used in the market for ITS (Intelligent Transportation Systems). The EN camera supports external event triggering, dynamic light sensor, and provides the best quality and sensitivity images for ITS applications. Applications include machine vision, medical imaging, intelligent transportation systems, high-definition graphics, on-line inspection, gauging, character reading, archiving, and high-security surveillance.

2 Getting Started

2.1 Required Equipment

Figure 1. Typical Equipment Setup



*Each camera requires a PD-12 12-V power supply.

For details, please see "Power Supplies and Cable Setup."

- PD-12 power supply
- Cat5e/6 Ethernet cable
- 10/100/1000 Ethernet switch
- Debug-232 serial/power cable (JAI Inc. part number 31013219)

2.2 Network Settings

2.2.1 Default Network Settings for the EN Camera

The factory default network setting for the EN camera is as follows::

IP address: 10.0.0.65

Subnet mask : 255.255.255.0

Default gateway : 255.255.255.255 (disabled)

You must set up your computer network properly in order to allow it to communicate with the camera. It is very important that your PC NOT be assigned the same IP address as the camera. If you need to change the IP address, follow the instructions in Section 2.2.2 on page 4.

2.2.2 Changing the IP Address of the EN Camera

If you need to change the IP address of your EN Camera, you can do so using either the EN setup software or the debug RS-232 serial/power cable. Choose the method that is most appropriate for your application, and follow the steps listed.

2.2.2 (a) Changing the IP Address of the EN Camera Using the EN Setup Software

You can use the EN setup software to change the IP address of the camera. Use the steps below.

1. First, set up your PC's network setting properly so that your PC has the 10.0.0.XX subnet. However, XX must not be 65, because the host PC's IP address cannot be the same as that of the camera. The subnet address must be 255.255.255.0.
2. Next, open the EN setup software. If you are starting this software for the first time, you will be asked to type your password. Your case-sensitive user name and password are as follows:
User name: Administrator
Password: Password
3. Click the "Properties" button. You will see the EN cameras that are in the network.
4. Click the icon of the camera you want to change. Once it is selected, find the "IP address" register and change the IP address of the camera.
5. Right-click on the camera icon and select "Reboot." This option will reboot the camera.
6. The camera will now start up with a new IP address.

2.2.2 (b) Changing the EN Camera IP Address Using the Debug RS-232 Serial/ Power Cable

You can use the debug RS-232 serial/power cable to access the BIOS menu and change the IP address of the camera. To do so, follow the steps below.

1. First set up your hyper terminal as 9600-8-N-I. Start up the camera. You should now see the BIOS start-up code.
2. Type "/" to stop the normal camera boot-up and to start the BIOS test mode.
3. Type "3" to select the "IP address change" setting.
4. Type "1" to select the first network interface, and then "1" again to change the local IP address.
5. Type the IP address you want to change.
6. Type "0" to return to the main menu, and then type "0" to start up the normal boot-up.

2.3 Installing the Required Software

The EN setup software is used to change the registers of the camera parameters, display live video images, and sniff hardware/trigger Ethernet from the lane controller. To install the software required for the EN camera, run "Setup.exe" from the CD-ROM. This will guide you through the proper installation. Once the software is loaded on your system, find the "EN Setup" software from the Start menu (Start -> EN Setup -> EN Setup). If you are logging in for the first time, you must enter the following case-sensitive user name and password:

User Name: Administrator

Password: Password

Once you log in as Administrator, you can create a new user and set a custom password.

To set the properties of each camera connected to the network, follow the steps below:

1. Click the "Properties" button. The software will automatically find all EN cameras currently on the network.
2. Select the EN camera you want to see in the left window. All accessible registers are displayed in the right window.
3. Click the "Video" button. You can select the cameras in the left window in order to display either a live image, or a triggered image. You can display up to four cameras in a single screen.
4. .Adjust the lens as needed.

3 Tutorial

This section demonstrates typical operations of the EN camera that most applications will require. This tutorial is intended for first-time users of the EN camera. Go through this section step-by-step to familiarize yourself with the EN camera's operations.

3.1 Image Capturing

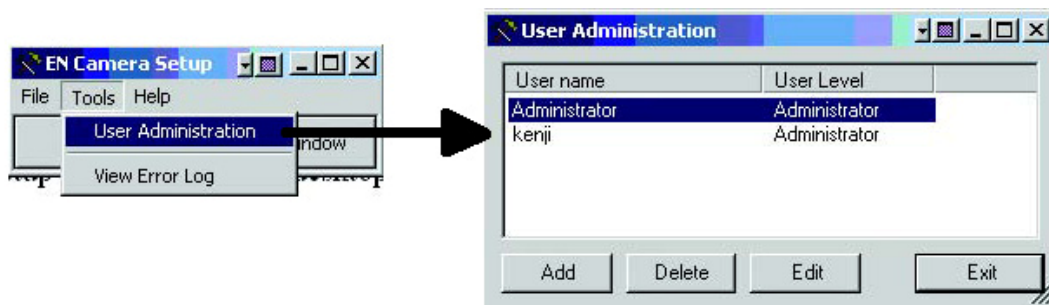
3.1.1 Start Up the EN Setup Software

Find the "EN Setup" shortcut on your desktop or go to "Start" -> "All Programs" -> "EN Setup" -> "EN Setup." Start the "EN Setup" software.

Type the case-sensitive user name "Administrator" and password "Password."

You can create a new user and password from User Administration option. From the "Tools" menu, select "User Administration," as shown in Figure 2 below.

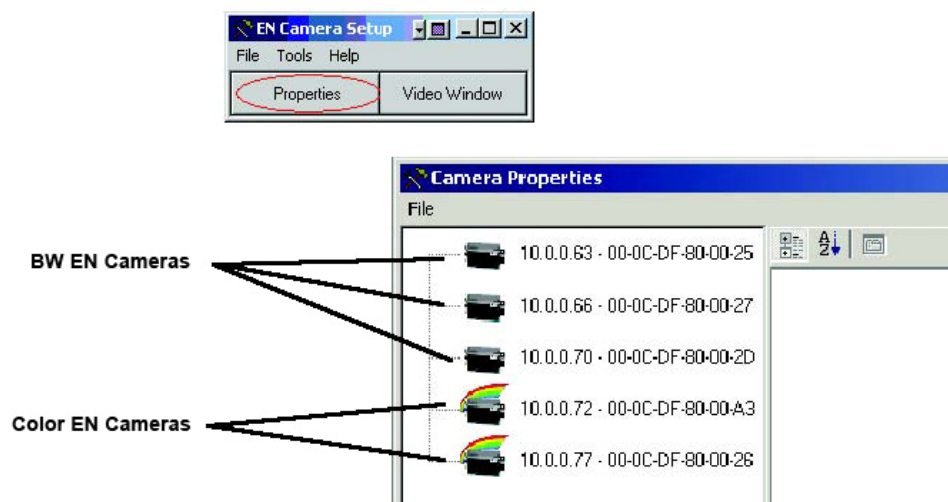
Figure 2. User Administration



Click the "Properties" button to see all the EN cameras the software has located on the network.

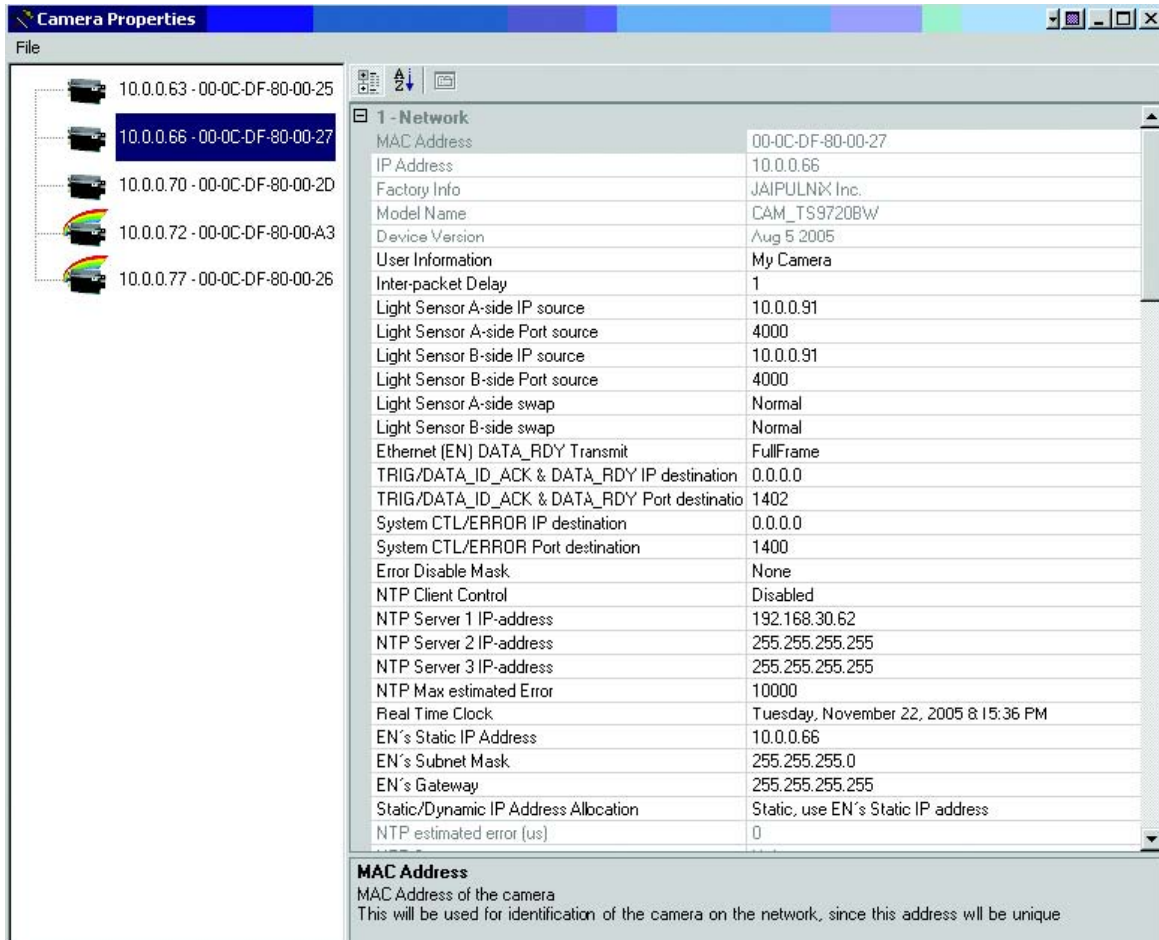
3.1.2 Camera Properties

Figure 3. Properties



Click the camera icon on the left side of the window to see all the accessible config/status registers.

Figure 4. Camera Properties



3.1.3 Live Image Capturing/Focusing

Click the "Video" button.

Highlight the icon of the camera you want to see. Click the "Full Size" and "Live" video buttons. You will now see a live video image. The live image is generated by an internal trigger mechanism inside the EN camera. This internal trigger is independent of either FTP or message-based TCP image. Also, during live image display, Flash is disabled at nighttime.



The "Snap" button captures only a single video image. The "Freeze" button disables the "Live" image option.

Use the "Live" or "Snap" buttons only while the camera is being set up, for those occasions you want to see the maximum frame rate of the video image to focus the lens.

Figure 5. Live Image Capturing

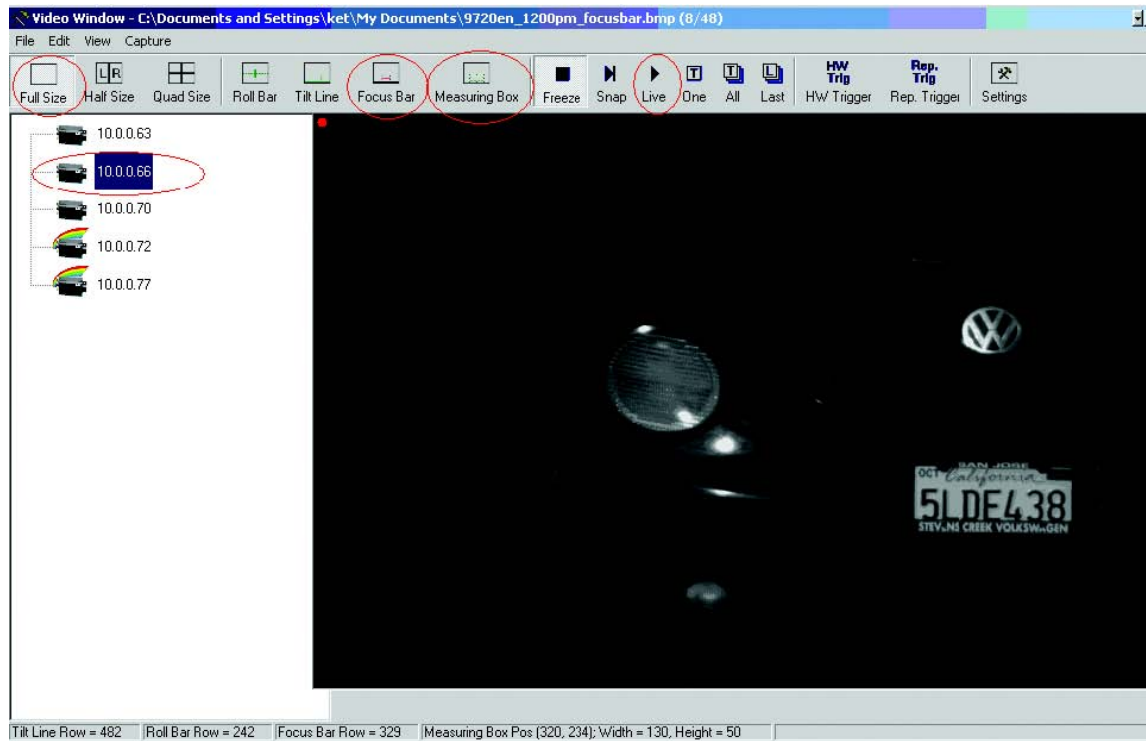
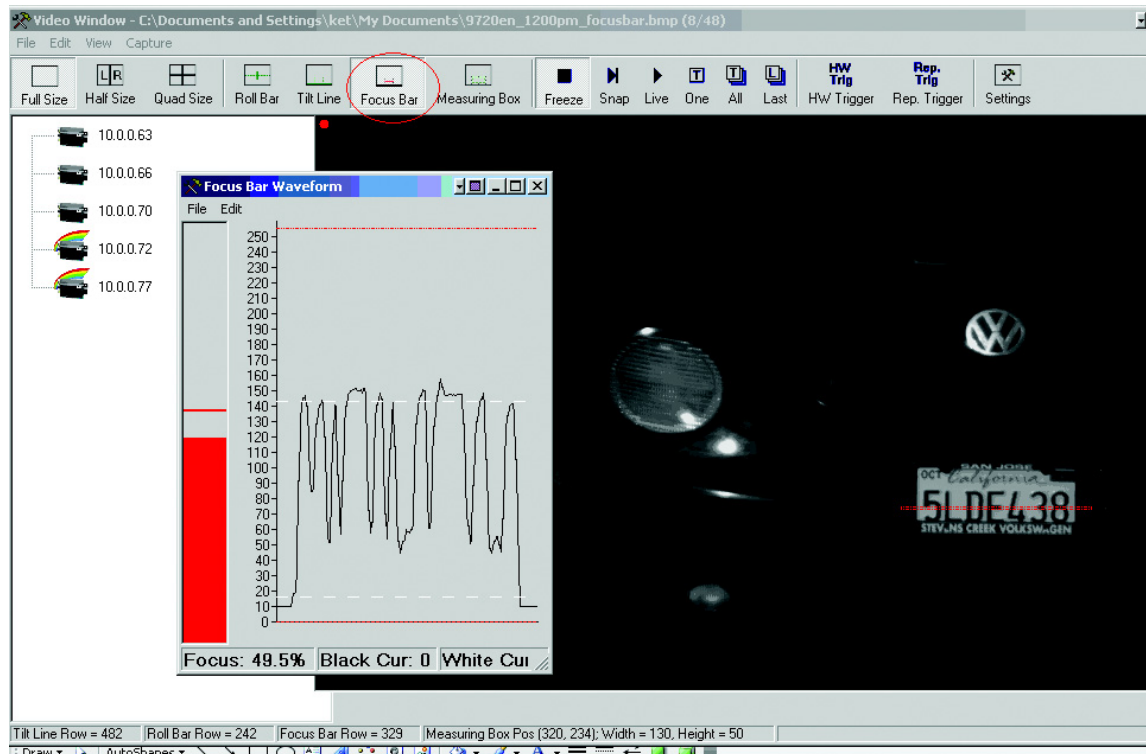
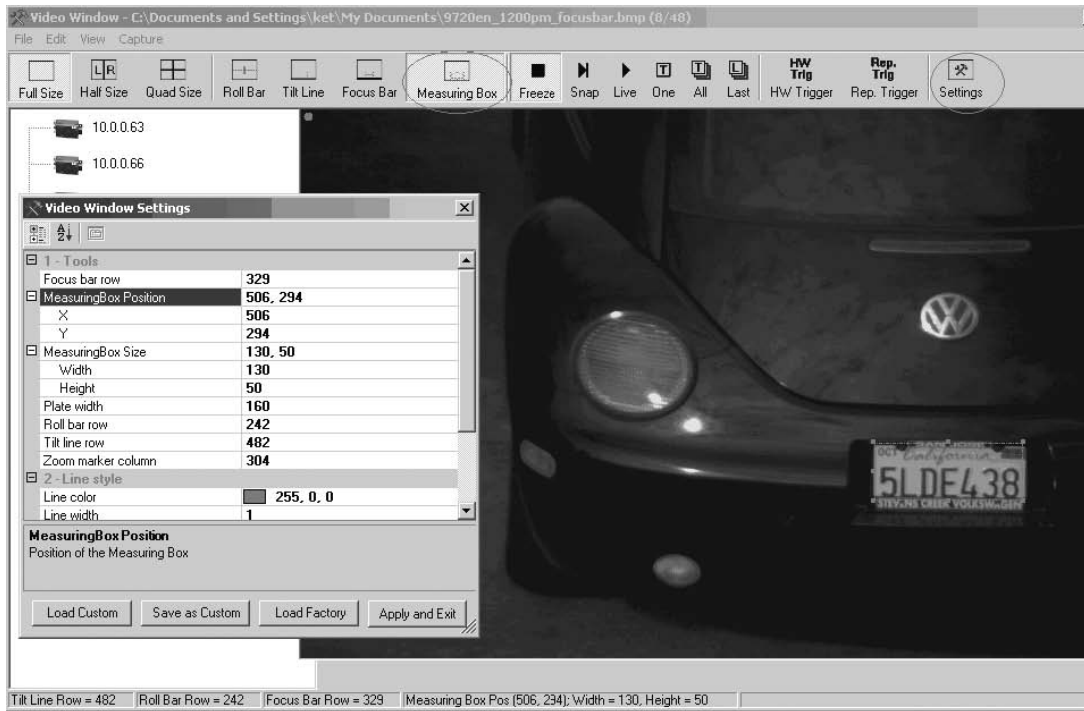


Figure 6. Focus Bar



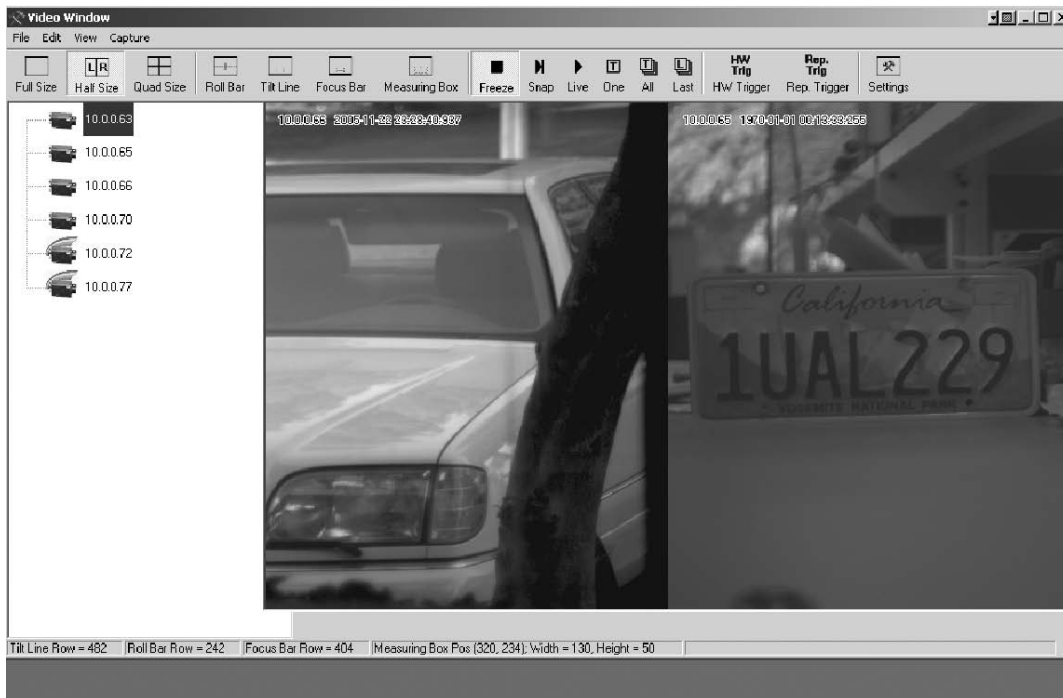
Use the "Focus Bar" button to make precise adjustments to the lens focus.

Figure 7. Measuring Box Position



Use the “Measuring Box” button to make sure the license plate or particular target is in the correct side of the video field of view.

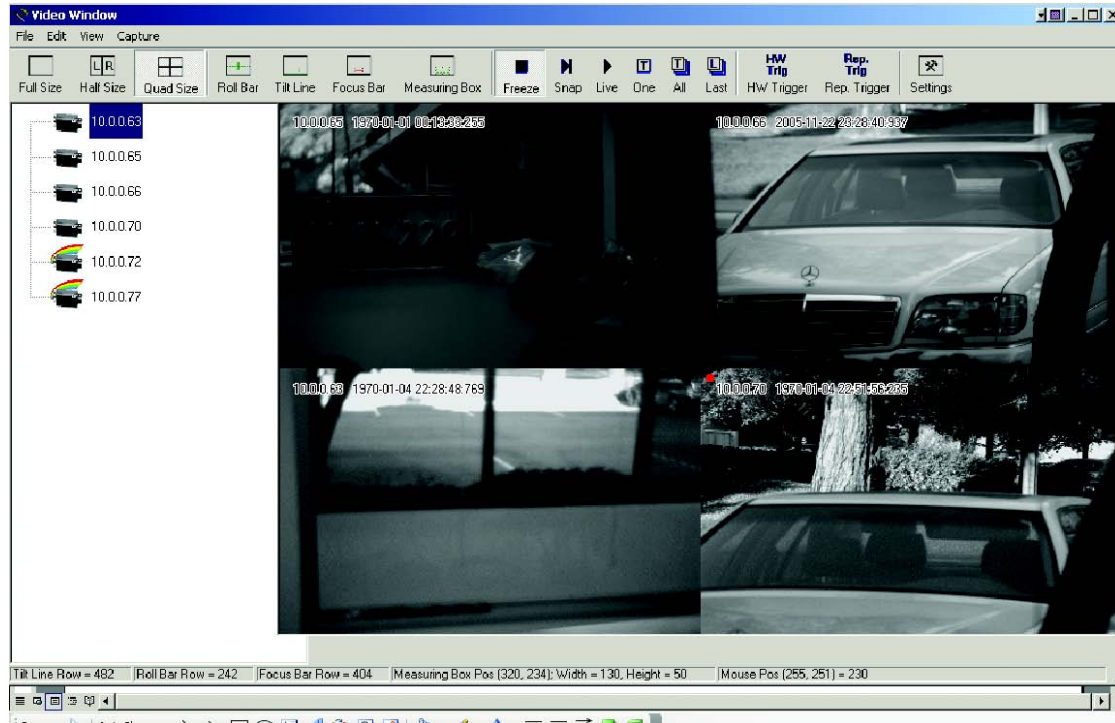
Figure 8. Half Size Image Position



The “Half Size” image button is useful for situations in which two EN cameras together cover a single lane. Using the “Half Size” image button to capture two images: one on the left side of camera1, the other on the right side of camera2. To activate “Half Size,” click on the camera icon

and drag it to either the left or right video frame. Click the “Live” button to see the live image. Use the focus tool to make precise adjustments to the lens focus.

Figure 9. Quad Size Image Button



Click the “Quad Size” image button to capture four images. Each image will then be reduced from the full resolution to one-quarter resolution. Click and drag the camera icon to the desired quad image frame. Click the “Live” button to see a live image.

Note: Because Bayer Color information is sub-sampled and lost, color cameras do not display proper color in “Quad Mode”.

Three trigger-sniffing modes are available: “One,” “All,” and “Last.” “One” trigger mode is for when you want the EN camera to take a single shot of video image, as soon as it receives a valid TTL trigger, Ethernet trigger, or RS-485 serial trigger. “All” trigger mode is continuous trigger-sniffing mode. Trigger sniffing is a mode of operation that allows the user to continuously and passively monitor images captured by the external trigger without disturbing the trigger process. For every trigger input, the EN camera will capture a new image. “Last” trigger mode is the same as “All” trigger mode, except that the EN camera will send the last captured image when you select the “All” button. Flash is activated when the trigger is received.

Figure 10. Hardware Trigger Sniffing Mode



The “HW Trigger” and “Rep. Trigger” buttons send the Ethernet trigger command to the EN camera. “HW Trigger” button sends a single Ethernet trigger command. “Rep. Trigger” sends a continuous Ethernet trigger command every second



3.1.4 Image Properties

You can monitor the image properties of captured images, whether it's "Live," "Snap," or "Trigger - Sniffing" mode. On the Video Window menu, select "Image Properties" under "View." You can also use the EN setup software to monitor the image properties of saved images and FTP images.

Image Properties

Date and Time	
DateTime	2005:11:22 23:53:21
DateTimeOriginal	2005:11:22 23:53:21
SubsecTime	006
SubsecTimeOriginal	006
EXIF Version Tags	
ExifVersion	48, 50; 50; 48
Image Data Structure	
ImageWidth	768
ImageLength	484
BitsPerSample	8
Compression	No Compression
PhotometricInterpretation	Grayscale (BlackIsZero)
StripOffsets	180
SamplesPerPixel	1
StripByteCounts	371712
XResolution	72
YResolution	72
PlanarConfiguration	Chunky
ResolutionUnit	Inch
Information	
ImageDescription	ENSetup Generated
Manufacturer	JAIPULNIX Inc.
Model	CAM_TS9720BW
Software	ENSetup version: 1.0.2113.18909; EN_API2
Copyright	Copyright 2005 JAIPULNIX Inc.
ImageUniqueID	MAC='00-0C-DF-80-00-27'; IP='10.0.0.66'; De

ImageWidth
Shows size of image.

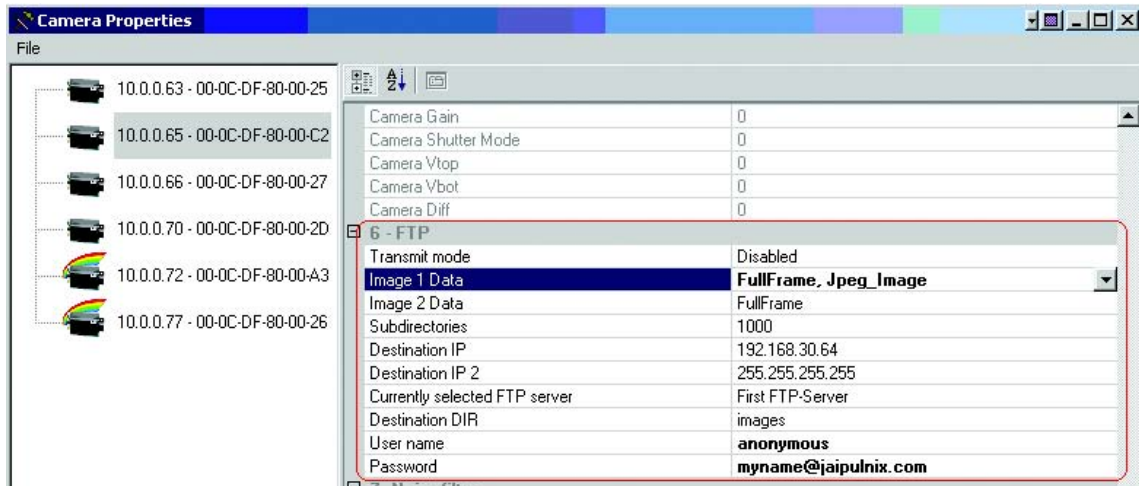
3.2 Image Transfer

3.2.1 FTP Image Transfer

To transfer images via FTP, first make sure to set up the FTP server properly. Please check the following items:

The username/password or anonymous login must be set for FTP server.

Set the permission of the read/write/create directory.



First, type the IP address of the FTP server (destination IP). If you have a second FTP server, enter that IP address as well. If the EN camera detects that the first FTP server is down, then it will automatically send images to the second FTP server.

Enter the User name and Password that the FTP server gives permission to.

Type image type (TIF or JPEG). "Image1 Data" is an image triggered by the first TTL trigger, Ethernet trigger, or RS-485 serial trigger. If the second FPGA trigger is set (Config Address=28), then the FPGA automatically generates the second hardware trigger predefined delay after the first hardware TTL trigger. "Image 2 Data" defines image type of the second triggered image. Normally, you should ignore the "Image 2 Data."

"Subdirectories" is normally set to 1000. The EN creates subdirectories under a single Destination DIR. When the number of files in the subdirectory reaches 1000, then the EN automatically creates another subdirectory. Naming conventions of the subdirectory can be found in the LC-to-EN interface document.

"Destination DIR" is a name of the directory where all "Subdirectories" are located.

Please refer to Troubleshooting "Problem 9: FTP servers switch between primary server and second server, even if the hard disk is not full." on page 42.

3.3 ADR (Automatic Dynamic Range) Control

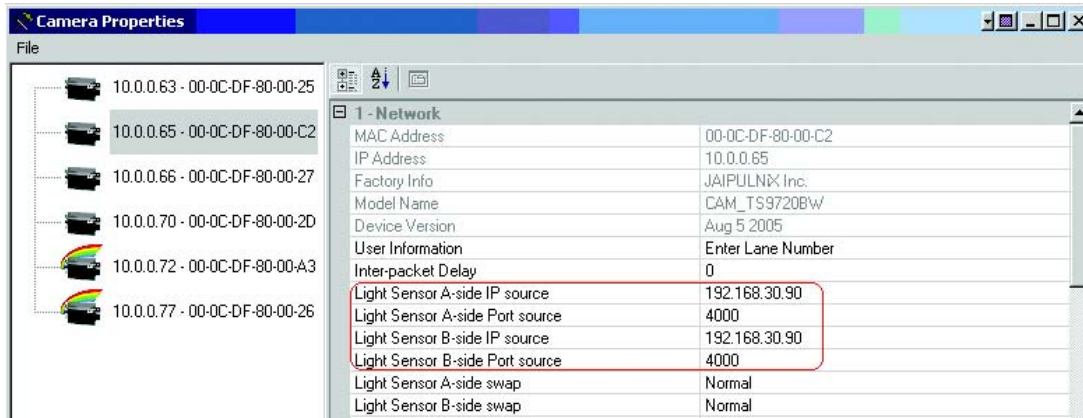
3.3.1 Light Sensor Connection

ADR control is a process that runs inside the EN camera. It controls the camera every 1/10 second to ensure that when the camera is triggered, it produces a high quality image of the license plate and the vehicle it is mounted on, in all ambient lighting conditions. The ADR also decides when to turn on/off auxiliary lighting as required to maintain proper plate illumination at night and during dawn/dusk transitions. ADR uses an external light sensor to provide the information required to

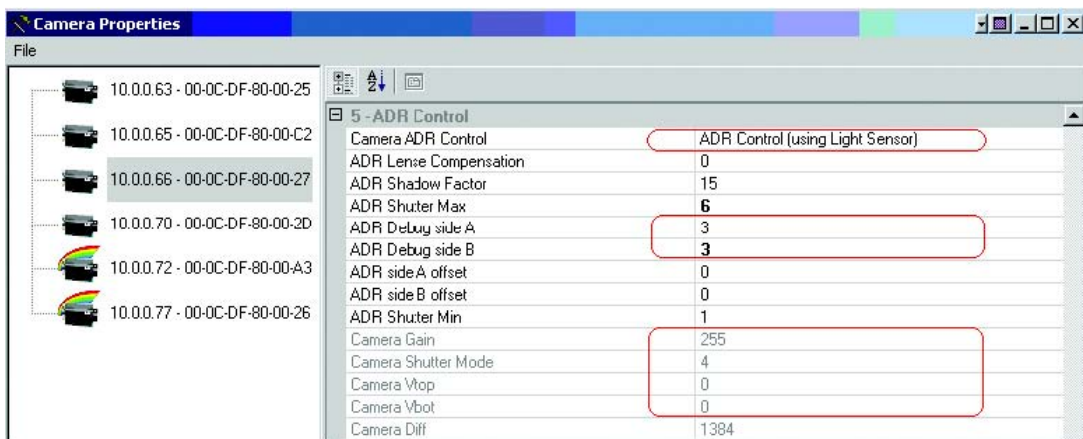
EN Camera Series

operate properly. ADR operation can be enabled/disabled by the user at any time. Make sure to set up Moxa (RS-485 to Ethernet converter) properly. See (VIS400 manual Appendix A).

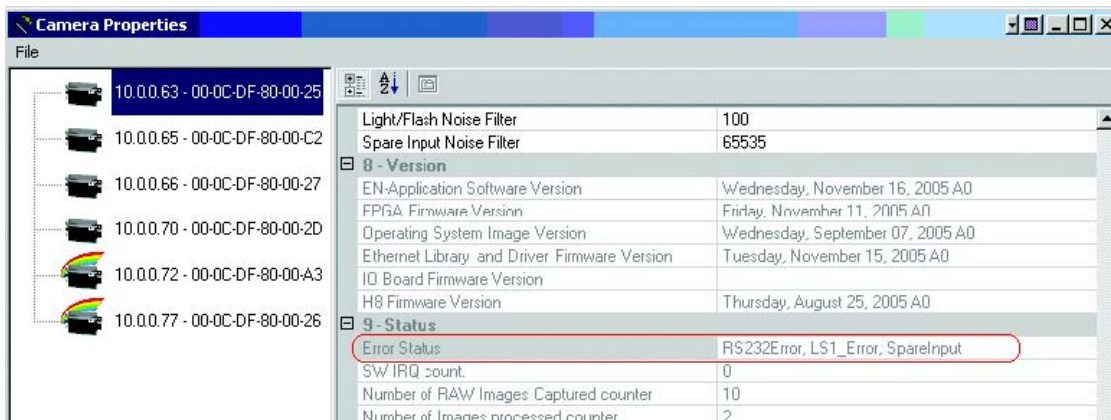
In the camera's "Properties" window, set up the light sensor's IP address and Port number. These numbers must be consistent with Moxa's setting.



You can connect up to two light sensors. If two IP addresses and port numbers are identical, then the EN camera tries to connect only a single light sensor.



Set the ADR Control register from "Manual" to "ADR Control (Using the Light Sensor)." This will activate the connection to the light sensor. If the connection is successful, you should see a live data change in the ADR Debug side A/B registers. Also, you should see what camera parameters ADR decides to set. In the above example, ADR sets to exposure time 4H (Dial 4 = 4H), Gain=255(max), Vtop=0, and Vbot=0. If there is a connection error, then these register values will all remain zero.



Also, check the "Error Status" register. If there is a connection error, LS1_ERR or LS2_ERR is set. If a light sensor is not required for your application, set the "Camera ADR Control" register to "Manual."

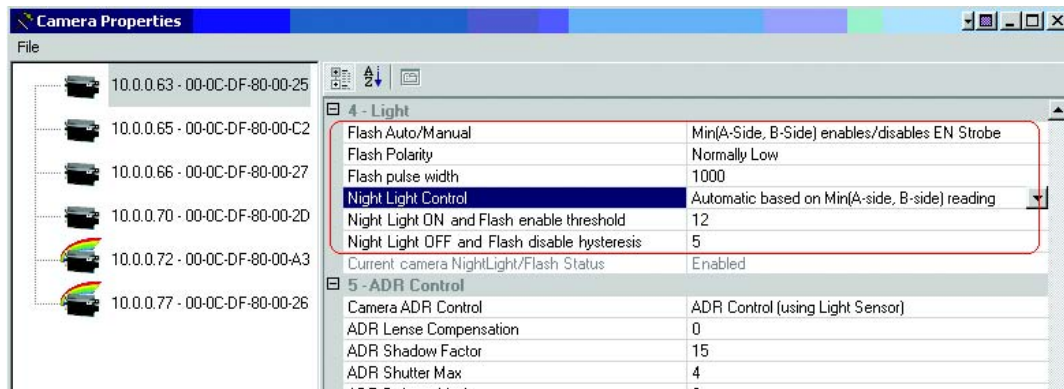
3.3.2 Flash Nighttime Light Control

The strobe and continuous nighttime light can be manually turned on and off. Set "Flash Auto/Manual" and "Night light Control" registers to Manual OFF or ON.

Generate an Ethernet trigger or input TTL trigger to see Flash. The "Live" or "Snap" button does not generate Flash, because they are independent from normal trigger operation.

Normally, Flash and Night Light are controlled by ADR and a light sensor. To take advantage of this feature, connect to the light sensor. Set the "Flash Auto/Manual" and "Night Light Control" registers as shown below.

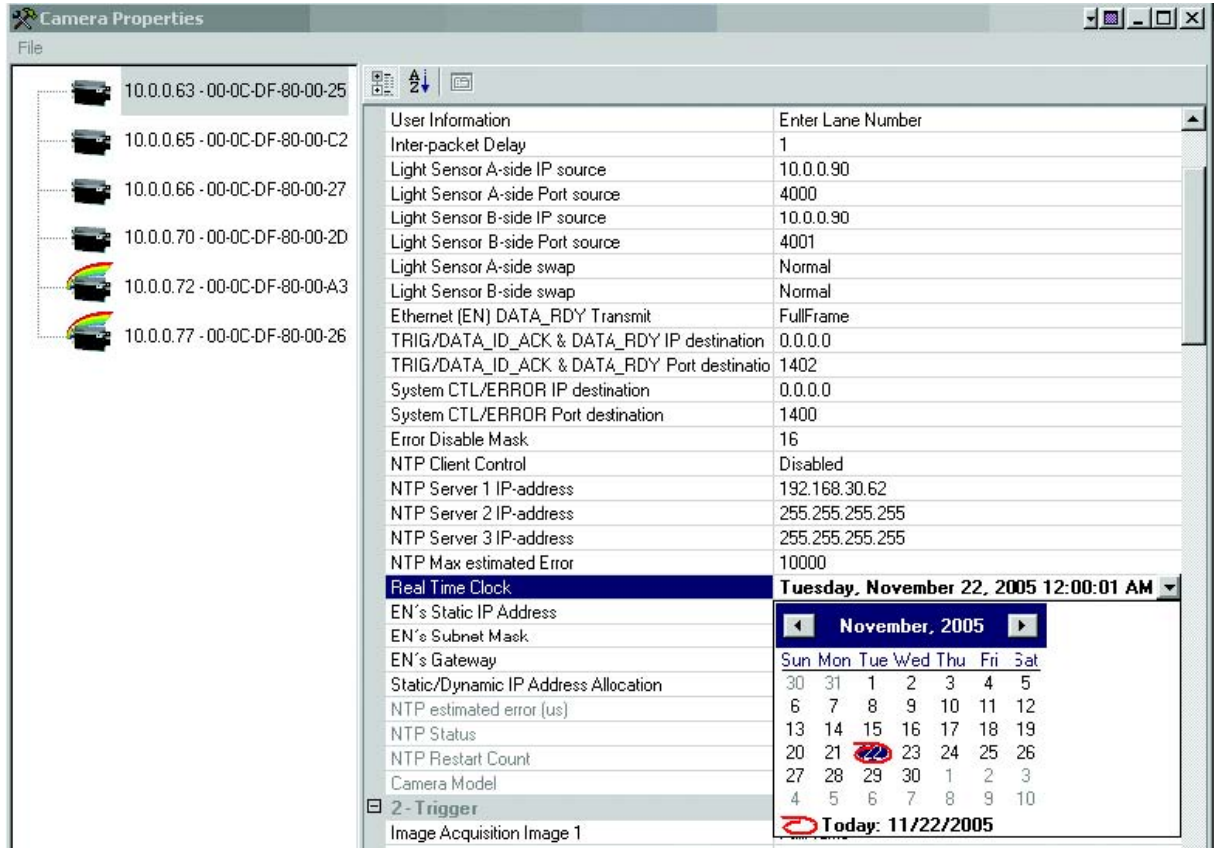
In this setting, in the evening when light sensor reading drops below 12, Flash and Night Light are turned on. And in the morning when the light sensor reading rises above 17, Flash and Night Light are turned off.



3.4 Time Synchronization

The EN camera supports NTP (network time protocol) synchronization. If you disable NTP by clearing the "NTP Client Control" register, then the internal clock will drift approximately 1.5 seconds per day.

To reset the clock, set the "Real Time Clock" register to your current local time.



If you decide to take advantage of the NTP feature, make sure to set up the NTP server, preferably with GPS input. This guarantees that the clock drift is within 10ms. Set the NTP server IP-address registers up to 3 NTP servers. Then, enable "NTP Client Control" register. Reboot the camera.

After rebooting the camera, check the "Real Time Clock" register to check if the current time is properly set. Note that this time is GMT.

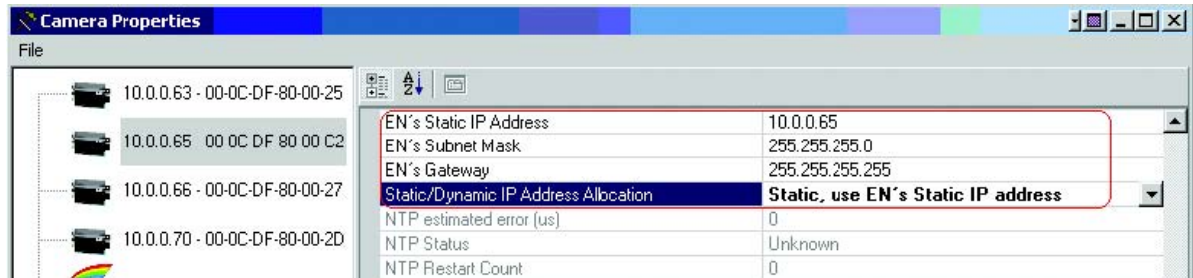
If the NTP drift file is empty, then the NTP will take about 1 hour to optimize the time. During the initialization, "NTP Status" must show USYNC, and "NTP estimated error" is max. After 3-4 hours, the time drift will become within 10ms. Check "NTP estimated error" and "NTP Status" registers again. "NTP Status" must be showing "PLL." This means that NTP is finally synchronized properly.

3.5 Static IP Address Assignment

The factory default IP assignment is static IP= 10.0.0.65. The user must change the IP address of the camera. There are four methods to change the static IP address: EN setup software, Telnet, serial terminal using the debug RS-232 serial/power cable, and BIOS/Monitor using the debug RS-232 serial/ power cable.

The first two options, EN setup software, and Telnet, require that the network settings of the EN camera such as IP address and Subnet Mask be known, while the last two options do not. If Ethernet is not available, then the last two options will be useful.

The EN setup software is the easiest way to change IP address. In the "Properties" window, change the network setting registers. After changing these registers, reboot the camera. The new setting appears at the next power-up.



- Telnet
If you know the current IP address of the camera, you can telnet directly to the EN camera. Login as User name = root, Password = JAI PULNiX. If you want to assign a new IP address temporarily, you can use the "ifconfig" utility. If you want to assign a new IP address permanently, you can use the "test_libcamera" utility (See Section 3.6.3, "RS-232 PowerPC Debug Port," on page 18).
- Serial terminal using the debug RS-232 serial/power cable. This is exactly the same as the previous "Telnet" solution, except that you do not need an Ethernet connection. If Ethernet is down, or if the IP of the camera is unknown, this method is useful. You can use "ifconfig" or "test_libcamera" utility to assign new IP address temporarily or permanently

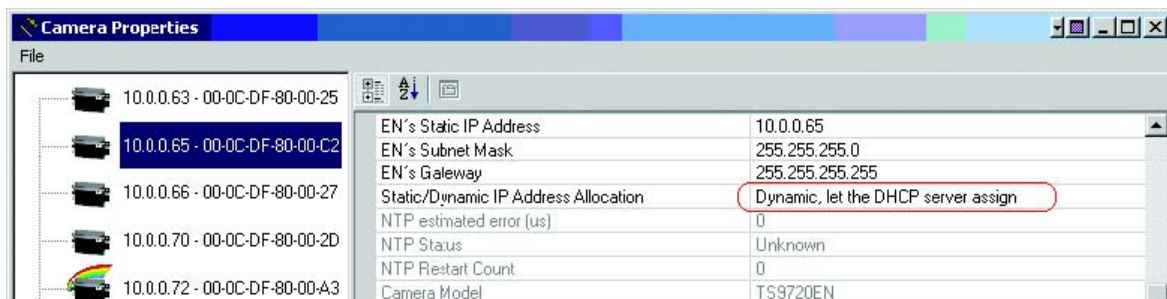
(See Section 3.6.3, "RS-232 PowerPC Debug Port," on page 18).
- BIOS/monitor using Debug RS-232 Serial/Power cable. The BIOS/monitor is an even lower level of software running underneath of OS and application code. By using the BIOS/monitor, you can assign a new IP address permanently. See Section 3.6.3, "RS-232 PowerPC Debug Port," on page 18 for detailed operation.

3.5.1 DHCP Client

Make sure that you have a DHCP server in your network.

Change the "Static/Dynamic IP Address Allocation" register from "Static" to "Dynamic."

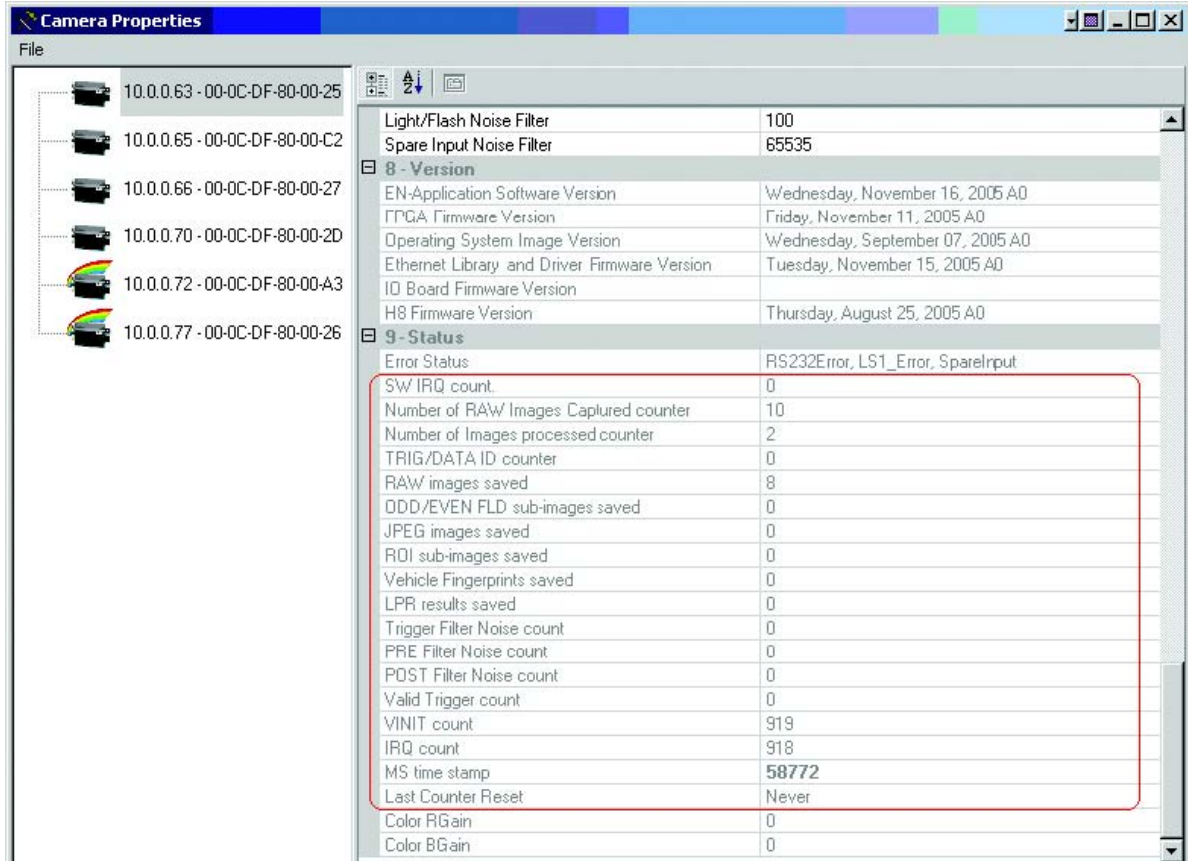
Reboot the camera. In the next power-up, the camera will get the IP address dynamically from the DHCP server.



3.6 Maintenance

3.6.1 Debug Counters

For debugging purposes, some status registers are available as debug counters.



Detailed information for each debugging counter is included in the LC-EN Interface document. This tutorial covers the following debug counters.

- Trigger Filter Noise count = number of hardware TTL triggers that failed trigger noise filter.
- PRE Filter Noise count = number of hardware TTL triggers that failed PRE filter.
- POST Filter Noise count = number of hardware TTL triggers that failed POST filter.
- Valid Trigger count = number of hardware TTL triggers that passed noise filter, PRE filter, and POST filter.
- VINIT count = number of reset signals sent to CCD
- IRQ count = number of interrupt generated by FPGA to PowerPC

By generating an Ethernet trigger ("All" and "HW Trigger" button on the EN setup video window), you can see only VINIT and IRQ counters are incrementing. This is because the first four counters are only for the hardware TTL trigger.

By feeding the hardware TTL trigger, you can see "Valid Trigger count," "VINIT count" and "IRQ count" register incrementing.

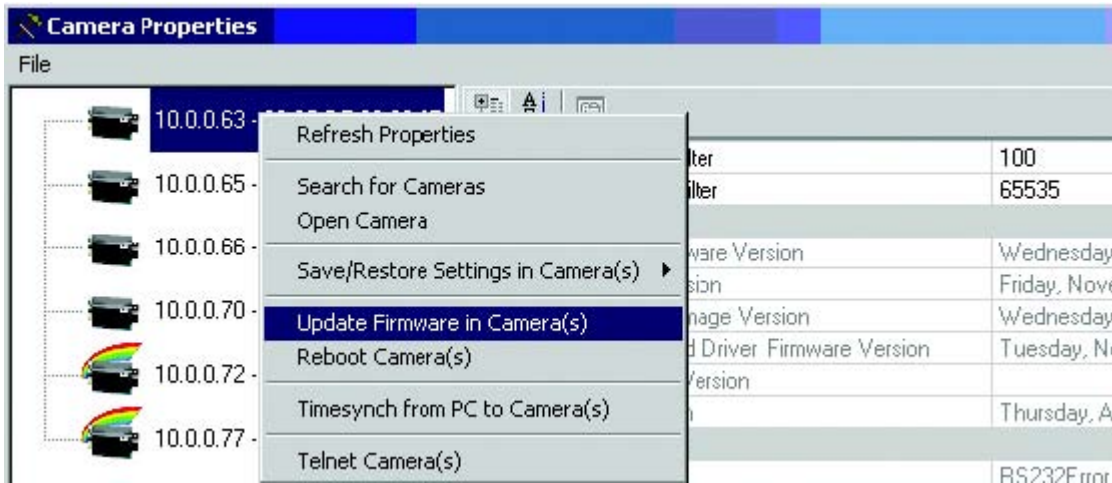
If you set 1ms to "Trigger Filter Noise" register and the hardware TTL trigger pulse is less than 1ms, then the trigger is ignored as an invalid signal. Only "Trigger Filter Noise count" must be incremented. However, all other counters remain the same.

If you set the PRE trigger filter to 10ms but the TTL trigger has only 9ms stable PRE condition, then only "PRE Filter Noise count" must be incremented. However, all other counters remain the same.

If you set the POST trigger filter to 10ms but the TTL trigger has only 9ms stable POST condition, then the "POST Filter Noise count" must be incremented. Unlike PRE trigger, "VINIT count" is also incremented, because trigger pulse is sent to CCD anyway before finishing validation of POST condition. Once FPGA invalidates the POST condition, FPGA does not generate IRQ to PowerPC. Besides "POST Filter Noise count" and "VINIT count," all other counters remain the same.

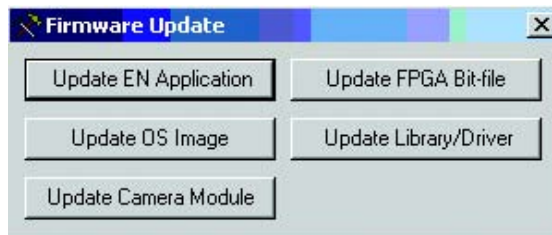
3.6.2 Firmware Upgrade

In the "Properties" window, right-click on the camera icon you want to upgrade. Select "Update Firmware in Camera(s)."



You can update the five pieces of firmware inside the EN camera. Each piece of firmware has a distinctive extension.

Table 1 Firmware Names and Descriptions



Firmware Name	Description	Filename conversion
EN Application	Top-level application	en_YYMMDDVR.app
FPGA Bit file	FPGA firmware	FPGA_YYMMDDVR.bit (all other EN cameras) FPGA_YYMMDDVR.4032bit (only for 4032EN)
OS Image Real-time	Linux OS image	vmlinux_YYMMDDVR.osi
Lib/Drv file	Library and driver package	libdrv_YYMMDDVR.driv
Camera Module	H8 firmware	2030h8cpu_YYMMDDVR.2030 1327h8cpu_YYMMDDVT.1327 4032h8cpu_YYMMDDVT.4032

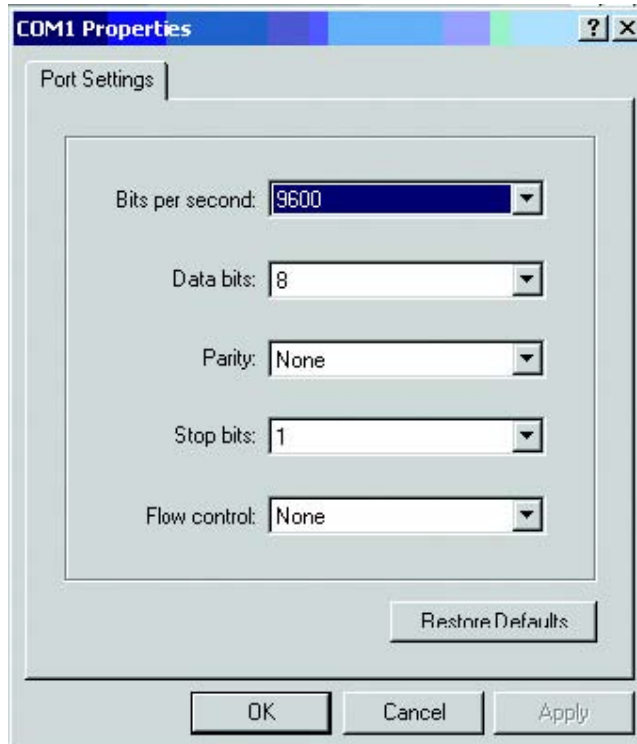
EN Camera Series

If you want to update multiple cameras at the same time, use the SHIFT key to highlight multiple cameras. Then, right-click to select "Update Firmware in Camera(s)."

3.6.3 RS-232 PowerPC Debug Port

If you have the debug RS-232 serial/power cable, you can debug EN cameras over the serial port. This is useful when Ethernet is not available. In this tutorial, we suppose we have accidentally assigned an invalid IP address to the EN camera, and now we cannot communicate with the EN camera over Ethernet. When this happens, there are two recovery methods.

The first method requires setting the Hyper terminal to the following setting (9600-8-N-1. No hardware handshake).



Power up the EN camera. You should see the monitor message in the serial terminal. Type the "/" key within three seconds.

```
JAIPULNiX 405GPr ROM Monitor
```

```
Version 1.2.4 July 11th, 2005  
Found Factory FPGA bitfile.  
Now booting up FPGA from FlashROM in Factory Bitfile mode.  
PROGRAM_N bit is asserted  
INIT_N bit is pulled low  
PROGRAM_N bit is deasserted  
INIT_N bit is pulled high  
DONE_N bit is pulled high  
FPGA boot-up successfully done  
Press / key to start monitor  
-
```

After typing the “/” key, you should see the following monitor menu.

```

-----
Debugger: Disabled
-----
 1 - Enable/disable tests
 2 - Enable/disable boot devices
 3 - Change IP addresses
 4 - Ping test
 5 - Toggle ROM monitor debugger
 6 - Toggle automatic menu
 7 - Display configuration
 8 - Save changes to configuration
 A - Enable/disable I cache (Enabled )
 B - Enable/disable D cache (Enabled )
 M - Memory Test
 U - OS Image BootUp Option
 Z - Set ethernet HW address
 0 - Exit menu and continue
->_

```

Enter “3” to select “Change IP addresses” mode.

```

->3
----- CHANGE IP ADDRESS -----
Device List:
 001 Enabled Ethernet [ENET]
                               local=10.0.0.65 remote=255.255.255.255 hwaddr=000cdf8000c2
-----
select device to change ->1_

```

Enter “1” to select Ethernet interface 1.

Enter “1” again to select “Change local address.”

Enter the new IP address.

```

select device to change ->1
 1 - Change local address
 2 - Change remote address
 0 - Return to main menu
->1
Current IP address = (10.0.0.65)
Enter new IP address ->Enter IP address in dot notation, (eg. 8.1.1.2)
.10.0.0.69

```

After setting the new IP address, type “0” to exit the monitor menu.

After the boot-up sequence, login to the serial terminal. (Username = root, Password = JAIPULNiX)

Type “en -v > version.txt.” View the content of “version.txt” to see the firmware version

```

# en -v > version.txt
camera driver is being opened
camera driver is being closed!
# cat version.txt
Welcome to JAI-PULNiX EN Camera
EN version   : 051115A2
OS version   : 050907A0
LIB version   : 051021A0
FPGA version : 050805C0
#

```

Enter the command "ps" to see what processes are running. If the "dhcpc" daemon is running, kill this process. To do so, enter, for example, "kill <process_id>."

Enter the command "ifconfig" to see if the network is up and running.

```
# ifconfig
eth0      Link encap:Ethernet  HWaddr 00:0C:DF:80:00:C2
          inet addr:10.0.0.65  Bcast:10.255.255.255  Mask:255.255.255.0
          UP BROADCAST RUNNING MULTICAST  MTU:1500  Metric:1
          RX packets:7826 errors:0 dropped:0 overruns:0 frame:0
          TX packets:582390 errors:0 dropped:0 overruns:0 carrier:0
          collisions:0 txqueuelen:100
          RX bytes:532835 (520.3 kb)  TX bytes:869733477 (829.4 Mb)
          Interrupt:15

lo        Link encap:Local Loopback
          inet addr:127.0.0.1  Mask:255.0.0.0
          UP LOOPBACK RUNNING  MTU:16436  Metric:1
          RX packets:0 errors:0 dropped:0 overruns:0 frame:0
          TX packets:0 errors:0 dropped:0 overruns:0 carrier:0
          collisions:0 txqueuelen:0
          RX bytes:0 (0.0 b)  TX bytes:0 (0.0 b)
```

Eth0 is the network interface of the EN camera. In the above example, the EN's network is set to the following: IP address = 10.0.0.65. Subnet mask = 255.255.255.0.

If eth0 is not running or if you want to change to a different IP address, you can set the temporary network setting just to enable a FTP, TELNET, or Ethernet connection

Enter the command "ifconfig eth0 <NEW IP ADDRESS> netmask <SUBNET MASK>." This is a temporary IP assignment because the EN camera will lose this setting once you restart it.

```
# ifconfig eth0 10.0.0.89 netmask 255.255.255.0
# ifconfig
eth0      Link encap:Ethernet  HWaddr 00:0C:DF:80:00:C2
          inet addr:10.0.0.89  Bcast:10.255.255.255  Mask:255.255.255.0
          UP BROADCAST RUNNING MULTICAST  MTU:1500  Metric:1
          RX packets:7912 errors:0 dropped:0 overruns:0 frame:0
          TX packets:582431 errors:0 dropped:0 overruns:0 carrier:0
          collisions:0 txqueuelen:100
          RX bytes:539339 (526.6 kb)  TX bytes:869736191 (829.4 Mb)
          Interrupt:15

lo        Link encap:Local Loopback
          inet addr:127.0.0.1  Mask:255.0.0.0
          UP LOOPBACK RUNNING  MTU:16436  Metric:1
          RX packets:0 errors:0 dropped:0 overruns:0 frame:0
          TX packets:0 errors:0 dropped:0 overruns:0 carrier:0
          collisions:0 txqueuelen:0
          RX bytes:0 (0.0 b)  TX bytes:0 (0.0 b)
```

Now you should be able to telnet to the EN cameras.

If you want to assign the new IP address permanently, you can use the "test_libcamera" utility. The "test_libcamera" utility allows access to EEPROM, where all network settings are saved. After starting "test_libcamera," you can use the following commands:

rc : read IP assignment (static or dhcp)	wc : write IP assignment
rp : read IP address	wp : write IP address
rs : read Subnet mask	ws : write Subnet mask
rg : read Gateway	wg : write Gateway

Change the IP assignment/IP address/SubnetMask/Gateway. Reboot the camera. The new IP address/ subnet mask are used at the next power-up.

4 Uploading the Firmware

There are five pieces of firmware inside the EN camera that you can upload over the Ethernet. They are:

EN_APP: top-level application software.

OS_Image: Linux OS image and basic tile system

Lib/drv: library and driver file package

FPGA Bitfile: FPGA firmware (Extension ".4032bit" for TS(C)-34032EN, ".bit" for all other EN cameras)

H8: H8 firmware. H8 is responsible for serial communication to the CCD camera module and Gamma LUT.

4.1 To Verify Version Numbers for all Firmware

You can verify the version numbers of all firmware by using the RS-232 PPC debug serial port/telnet or the EN setup software. Both methods are explained below.

4.1.1 RS-232 PPC Debug Serial Port/Telnet

To verify the version numbers of all firmware with the RS-232 PPC debug serial port/telnet, login to EN camera as ROOT with the following user name and password:

user name: root

password: JAIPULNiX

Type "en-v" to see the version numbers for all firmware currently running.

```
Ex:          #en-v > version.txt
             #more version.txt
Welcome to JAI-PULNiX EN Camera
           EN version : 050812A0
           OS version : 050810A0
           Lib/drv version : 050812A0
           FPGA version : 050805C0
```

4.1.2 EN Setup Software

To verify version numbers for all firmware using the EN setup software, follow the steps below:

1. Start the EN setup software.
2. Click the "Properties" button.
3. Search for cameras in the network.
4. Left-mouse click on the camera you want.
5. Find the version numbers.

4.2 Updating the EN Application Software

The EN setup software is used to update the EN application software. The method is described below.

Uploading the Firmware

EN Camera Series Progressive Scan Shutter Cameras

1. Start the EN setup software.
2. Click the "Properties" button.
3. Right-click on the camera, and select "Update Firmware."
4. Select "Update EN Application."
5. Reboot the EN camera for the updates to take effect.

Note: You cannot update the identical EN application version.

4.3 Updating the FPGA Bitfile

You can update the FPGA bitfile by using the EN setup software. To do so, follow the steps below.

1. Start the EN setup software.
2. Click the "Properties" button.
3. Right-click on the camera, and select "Update Firmware."
4. Select "Update FPGA Bit-file."
5. Reboot the EN camera.

4.4 Updating the Lib/Drv File

You can update the Lib/Drive file by using the EN setup software. To do so, follow the steps below.

1. Start the EN setup software.
2. Click the "Properties" button.
3. Right-click on the camera and select "Update Firmware."
4. Select "Update Library/Driver."
5. Reboot the EN camera.

4.5 Updating the OS Image

You can update the OS image by using the EN setup software. To do so, follow the steps below.

1. Start the EN setup software.
2. Click the "Properties" button.
3. Right-click on the camera and select "Update Firmware."
4. Select "Update OS Image."
5. Reboot the EN camera.

4.6 Updating the Camera's H8 Firmware

You can update the camera's firmware using the EN setup software. To do so, follow the steps below.

1. Start the EN setup software.
2. Click the "Properties" button.
3. Right-click on the camera, and select "Update Firmware."
4. Select "Update H8."
5. Reboot the EN camera for the changes to take effect.

4.7 Updating the Firmware Manually without ENSetup software

It is sometimes necessary to update the firmware by hand when you do not have access to the network. This can happen, for example, if you have forgotten the IP address of the camera or when the update via the network fails. To update the firmware by hand, follow the steps below. You will need to use the RS-232 serial cable and the power/serial debug cable.

1. Log-in (user=root, password=JAIPULNiX) and change the directory to /usr/local/bin.
2. Type "ps" to see the process running. Kill the "dhcpcd" process, if it is running in the background.
3. Assign a static IP address to the network interface.
Example: To assign a static IP=10.0.0.65 and subnetmask =255.255.255.0, enter this command:
ifconfig eth0 10.0.0.65 netmask 255.255.255.0
4. Via FTP, manually send the firmware file to the /usr/local/bin directory of the EN camera.
5. Run test_bcs utility.
Ex. test_bcs -a en_YYMMDDVR.app – *Updates EN App file*
 test_bcs -b FPGA_YYMMDDVR.bit – *Updates FPGA bitfile*
 test_bcs -l libdrv_YYMMDDVR.drv – *Updates Lib/Drv file*
 test_bcs -o vmlinuz_YYMMDDVR.osi – *Updates OS image*
6. Reboot the EN camera (command "reboot"). The new firmware is loaded at the next power-up.

5 Connectors and Cables

5.1 Connector Pin Configurations

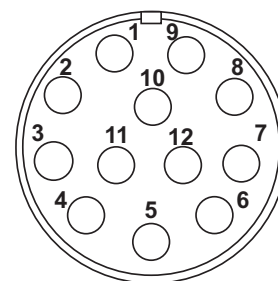
5.1.1 12-Pin Connector

Figure 11. 12-Pin Connector

The JAI EN camera has a 12-pin Hirose connector for power input, serial communication, and signal integration. Pin #1 is Ground and pin #2 is +12V DC. Other pins handle a number of input and output functions, as shown in Table 2.

Table 2 12-Pin Connector

Pin	Description	Pin	Description
1	GND	7	Reserved
2	+12V DC	8	Flash strobe output
3	GND (analog)	9	Reserved
4	Test point	10	RXD (RS-232) Power PC debug port
5	GND (digital)	11	Reserved
6	Trigger input*	12	TXD (RS-232) PowerPC debug port



5.1.2 High-Density 26-Pin D-Sub Connector

The EN camera has a 26-pin MDR26 connector (3M part number 10226-6212VC) on the rear panel. The connector pin-out is shown in Table 3.

Figure 12. 26-Pin HD-Sub Connector

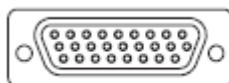


Table 3 D-Sub Connector Pinout Configuration (10226-6212 VC)

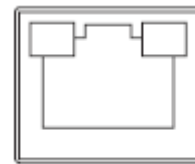
Camera Link Connector					
Pin #	Description	I/O	Pin #	Description	I/O
1	GND (Power)		14	Tamper Input	In
2	+12V Input	Out	15	Reserved	Out
Camera Link Connector (continued)					

Pin #	Pin #	Pin #	Pin #	Pin #	Pin #
3	RxD for Laser Detector (TTL)	In	16	LVD / IO Selector	Out
4	TxD for Laser Detector (TTL)	Out	17	Ethernet D+ (spare)	-
5	DIR Control for Laser Detector (TTL)	Out	18	Ethernet A-	Out
6	Ethernet C+ (spare)	-	19	GND (Analog)	Out
7	Ethernet C- (spare)	-	20	Test point	Out
8	Ethernet B-	In	21	Trigger Input	Out
9	Ethernet B+	In	22	LC TxD (TTL)	In
10	GND (Digital)	Out	23	LC RxD (TTL)	In
11	Flash Strobe Output	Out	24	LC DIR Control (TTL)	In
12	Flash Status Input	In	25	Ethernet D- (Spare)	-
13	IO Status Change	In	26	Ethernet A+	Out

5.1.3 10/100 BaseT Ethernet

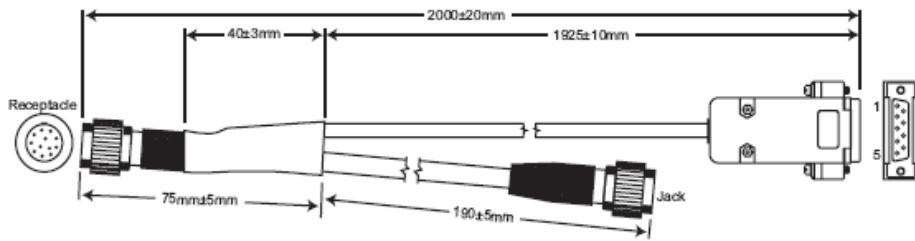
Table 4 10/100 BaseT Ethernet Pinout Configuration

10/100 BaseT Ethernet Pinout Configuration			
1	Ethernet TxD A+	5	N/C
2	Ethernet TxD A-	6	Ethernet RxD B-
3	Ethernet RxD B+	7	N/C
4	N/C	8	N/C



5.2 RS-232 Communication Cable

Figure 13. Serial Communications Cable RS-232B-12 (JAI Inc. part number: 310 132 19)



The RS-232B-12 interface cable is used to debug the PowerPC processor. This debug port is useful when the network is down and RS-232 is the only choice to connect with the EN camera. See Section 3.6.3 on page 24 and Section 4.7 on page 31 for detailed information on how to use the debug PowerPC port.

Note: Please make sure not to "hot" plug this cable into the camera (i.e. Plugging in while camera is on), unless your laptop or desktop PC is properly grounded. A PC with a floating ground can damage the internal circuit of the EN camera or your PC's serial port as soon as the debug (RS-232B-12) cable is connected.

5.3 Power Supplies and Power Cable Setup

5.3.1 Power Supplies

The EN Camera requires 12V DC power that is obtained through the 12-pin connector located on the rear panel of the camera. PULNiX recommends the following power supplies:

PD-12UU	100-240V AC/12V DC	1.2A universal voltage power supply with US Plug
PD-12UUP	100-240 V AC	1.2A universal voltage power supply, with US Plug and 12-pin connector
PD-12UE	100-240V AC/12V DC	1.2A universal power supply with European Plug
PD-12UEP	100-240V AC/12V DC	1.2A universal power supply with European Plug and 12-pin connector

If you are providing power through the 12-pin connector, the PD-12UUP and PD-12UEP power supplies are available with the 12-pin mating connector already attached to the leads from the power supply. The PD-12UU and PD-12UE power supply can be connected to the JAI Inc. power cable using a terminal strip or directly.

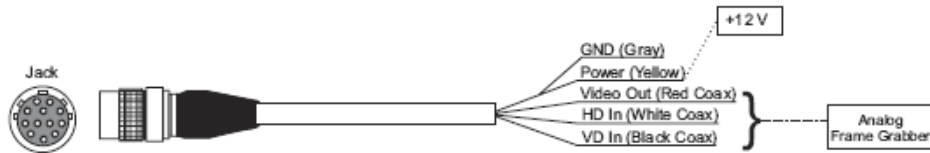
When wiring the PD-12UU and PD-12UE power supplies directly, please note the following:

- The lead ends must be twisted together and tin-soldered for strength and electrical continuity.
- Shrink tubing or a similar insulator should be used to prevent exposed leads from touching and shorting.
- The +12V lead is marked with a red stripe or white lettering; be sure not to reverse the leads.
- All connections must be properly insulated to prevent shorting.

5.3.2 JAI Inc. Power Cables

If you are using JAI Inc. power cables such as the 12P-02S, please refer to the 12-pin connector pin-out diagram. The cable pin-out diagram is shown in Figure 14 below. The color-coded leads use Gray for Ground and Yellow for +12V.

Figure 14. 12P-02S Interface Cable (optional)



12P-02S Interface Cable					
Pin#	Lead Color	Function	Pin#	Lead Color	Function
1	Gray	GND	7	Black coax	Reserved
2	Yellow	+12V DC	8	White coax shield	Reserved
3	Red coax shield	AGND	9	White coax	Reserved
4	Red coax	Video Out	10	Brown	RxD
5	Orange coax shield	GND	11	Blue	Reserved
6	Orange coax	VINIT IN	12	Black coax shield	TxD

Note: Make sure that the unused leads are not touching and that there is no possibility that exposed wires could cause the leads to short.

5.3.3 Building Your Own Power Cable

Refer to the 12-pin connector pin-out in Figure 14 on page 35. Connect the Ground lead to pin #1, and the +12V DC lead to pin #2 of the 12-pin connector. Power must be DC-regulated, and of sufficient current to properly power the camera.

5.3.4 Attaching the Power Cable to the Connector

The 12-pin connector is keyed and will only fit in one orientation. Follow these directions to properly attach the power cable to the camera connector:

1. Rotate the connector while applying slight pressure until the keyways line up.
2. Press the connector into place until firmly seated.
3. Plug the power cord into the 100V AC socket. This will power the camera up.

5.4 Attaching the Camera Lens

To attach the C-mount lens to the camera, carefully engage the threads and rotate the lens clockwise until it firmly seats on the mounting ring. Do not force the lens if it does not seat properly. Please note that some lenses with extremely long flangebacks may exceed the mounting depth of the camera.

Table 5 Lens Mount Format

	Sensor Format	Mount
TS(C)-1327EN	2/3"	C-Mount
TS(C)-2030EN TS(C)-2076EN	1"	C-Mount
TS(C)-4032EN	43.3mm (Full size 35mm format)	M42

6 Camera Features

6.1 Progressive Scanning

Standard TV-system scanning is 525 lines interlace scanning as specified in the RS-170 protocol. Every other horizontal line (odd lines and even lines) is scanned at a 60Hz rate per field, and the scanning is completed with two fields (one frame) at 30Hz rate. Because of the interlace scanning, the vertical resolution of CCD cameras is limited at 350 TV lines, regardless of the horizontal resolution. When electronic shutter is applied, the CCD can hold only one field of charge at each exposure. This means that the vertical resolution of the electronic-shutter camera is only 244 TV lines. The situation is the same for an HDTV-format camera, since it has interlaced scanning and the vertical resolution of the shuttered image is 500 lines.

The JAI EN camera uses a state-of-the-art progressive scanning interline transfer CCD which scans all lines sequentially from top to bottom at one frame rate. Like a non-interlace computer screen, it generates a stable, and crisp image without alternating lines.

The interline transfer architecture is also important to generate simultaneous shuttering. This is different from full frame transfer architecture which requires a mechanical shutter or strobe light in order to freeze the object motion.

The TS(C)-2030EN model (1920 x 512 resolution) enables the 30Hz frame rate by scanning 512 lines out of the entire 1080 lines. This technique significantly reduces smear and blooming, which tend to be significant problems in daylight outdoor applications such as intelligent transportation systems (ITS).

The TS(C)-2076EN model (1920 x 768 resolution) enables the 21Hz frame rate by scanning 768 lines. The TS(C)-2076EN has higher smear and blooming incidents than the TS(C)-2030EN. However, for those applications that require more vertical resolution, users will find that the slightly higher smear and blooming levels of the TS(C)-2076EN are a good trade-off and make it an excellent choice for red light violation or speed enforcement use.

The TS(C)-1327EN model (1392 x 1040 resolution) enables the 15 Hz frame rate by scanning 1040 lines. Wider vertical FOV and high NIR sensitivity provide excellent choice not only for ANPR/LPR tolling application but also for scene overview applications of Red light and speed enforcement.

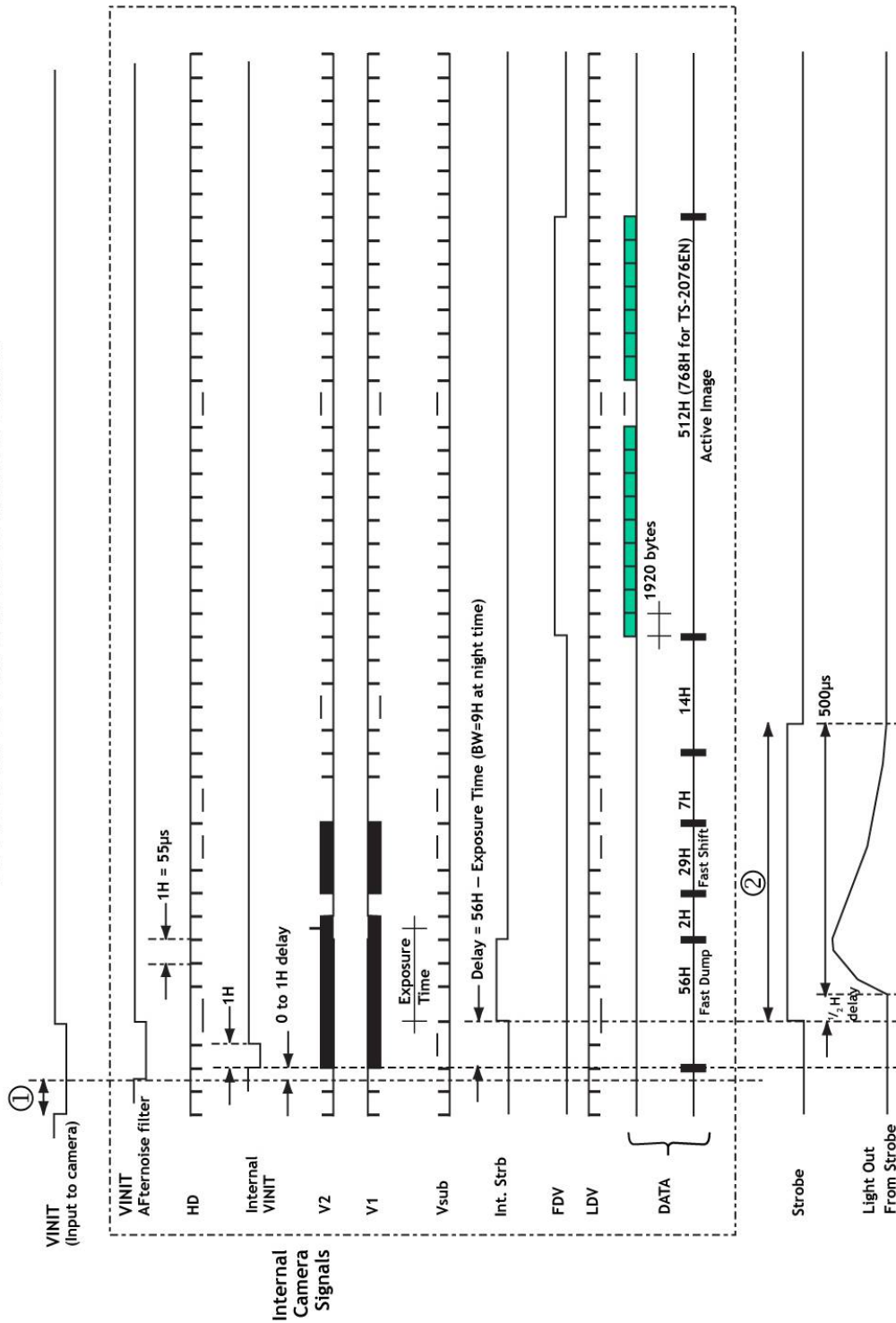
The TS(C)-4032EN model (2048 x 1628 resolution) enables the 19 Hz frame rate by scanning 1628 lines out of the entire 2048 lines.

6.2 Asynchronous Reset

The video signal starts with internal VD. When the external VINIT pulse is applied, internal VD is latched to HD and the internal VD is delayed to set up the shutter speed period. The shutter speed is controlled by the dial switch from "0" to "F." Video output timing starts right after the internal VD and single shots, FDV is output at the internal VD timing.

Figure 15. Timing Chart 1 (TS(C)-2030EN)

TS-2030EN/TS-2076EN AYNC TIMING CHART



① Trigger Noise Filter (Config Register Address=30) Factory default 100µs.

② Flash Pulse Width (Config Register Address=8) Factory default 1ms.

Figure 16. Timing Chart 2 (TS(C)-1327EN)

TS-1327EN AYNC TIMING CHART

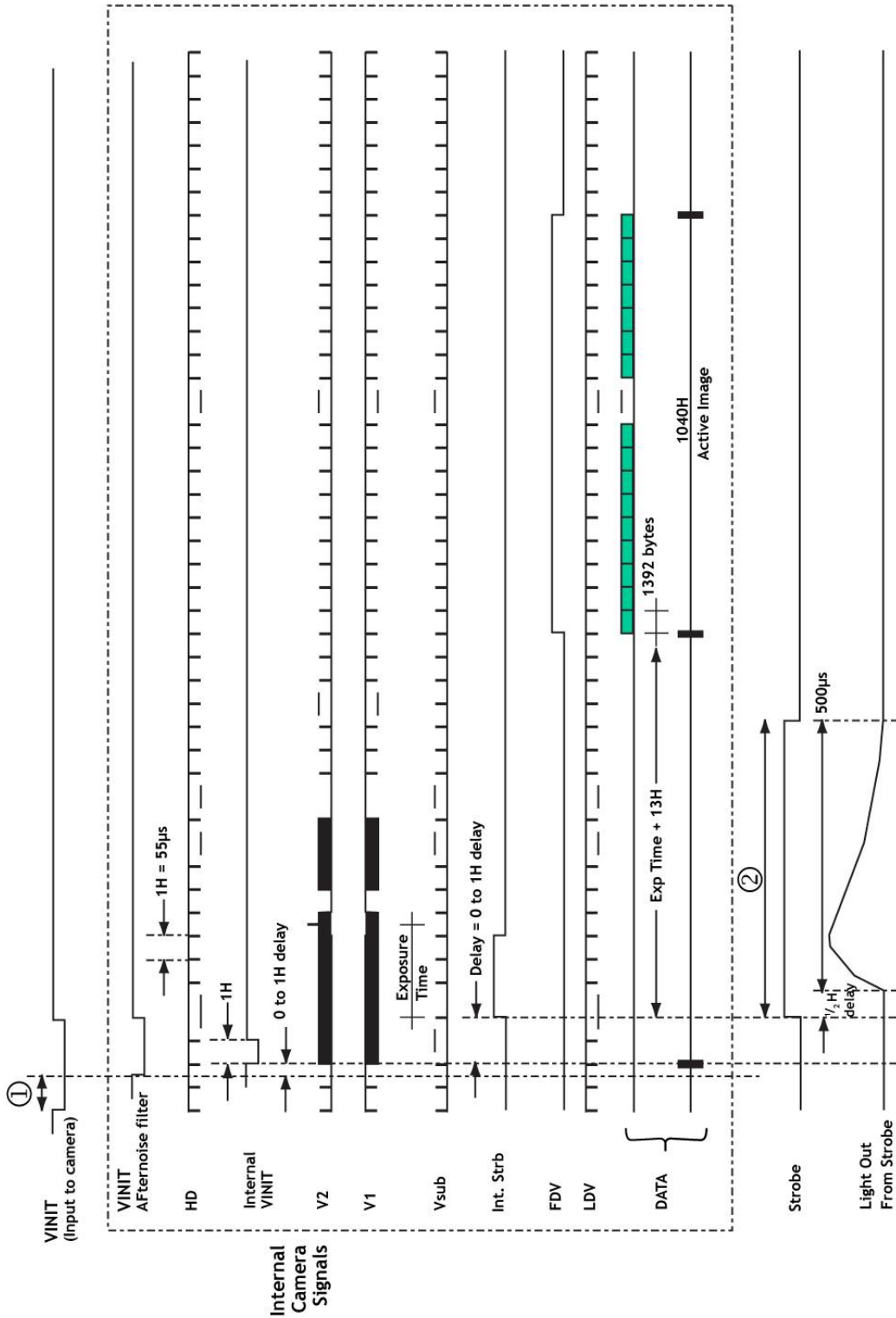
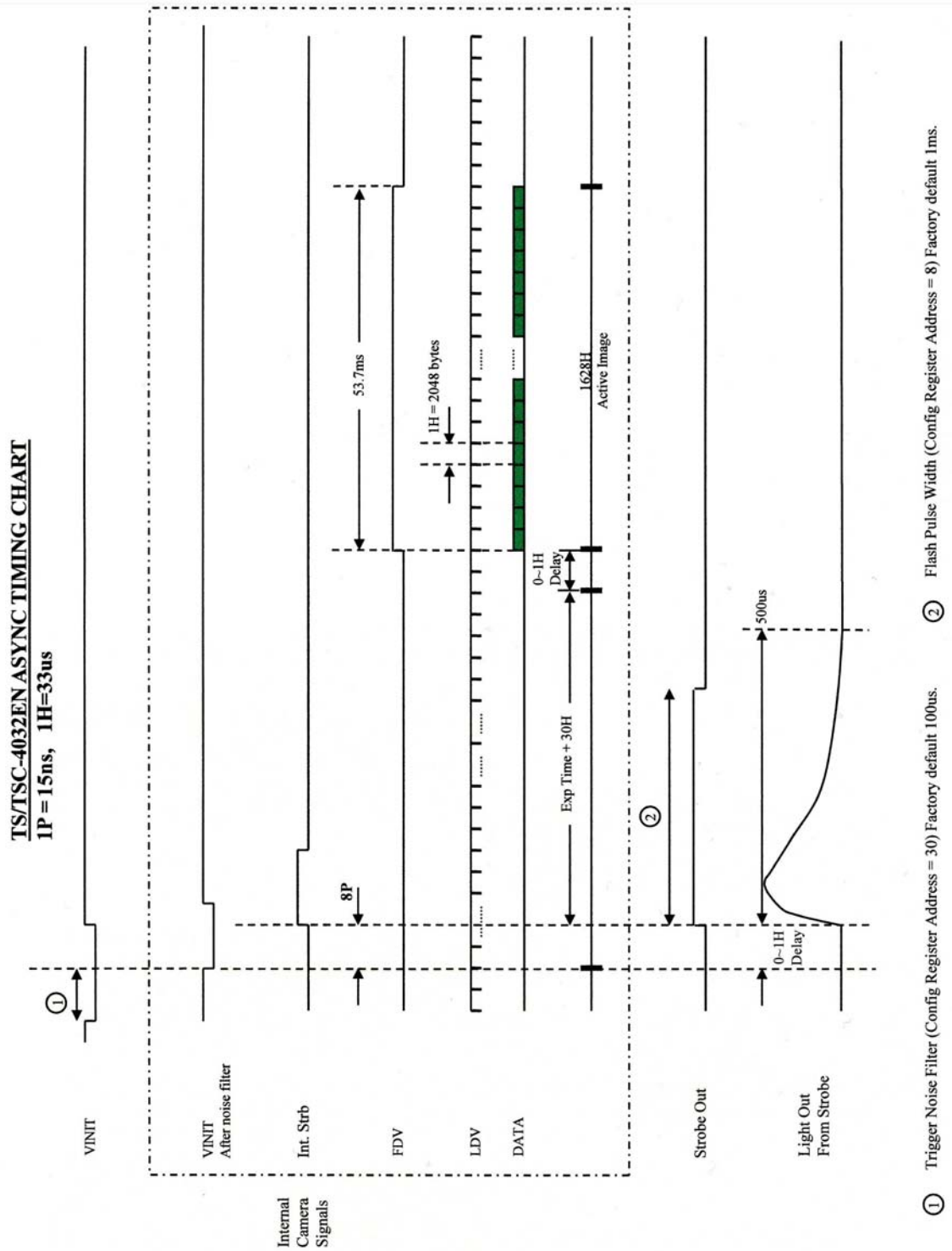


Figure 17. Timing Chart 3 (TS(C)-4032EN)



6.3 ADR (Automatic Dynamic Range) Control

ADR (Automatic Dynamic Range) control is a key algorithm of EN cameras. The ADR algorithm controls the EN camera parameters on a continuous basis to maintain the contrast-to-noise of the license plates on passing vehicles to a suitable level required for automatic license plate reading algorithms. The EN ADR algorithm is unique in that it requires no moving parts and can perform this contrast maintenance function without having to take multiple images of a vehicle in order to achieve the required plate contrast. The key to this ability is a separate smart light sensor. Each EN camera can communicate with up to two smart light sensors. Using these smart light sensors, the EN cameras automatically optimize Exposure time (or shutter speed), and Video Amplifier Gain ("Gain" in short).

Using EN setup software, user can turn on or off ADR control by accessing "Camera ADR Control" config register (Address = 50).

6.3.1 Camera ADR Control Related Registers

The following registers are accessible by users in order to switch ADR control on/off and fine-tune the logic. ENSetup software can display these registers as well. Please refer to "EN to LC Interface Document" for detail.

- Camera ADR Control

Normally, the user must set to "ADR Control (using Light Sensor)" in order for the Light Sensor to control the camera parameters (shutter, gain, vtop, vbot, pedestal). In "Debug" mode, the user can set Light Sensor A and B values to "ADR Debug side A" and "ADR Debug side B" registers to simulate the camera's ADR control logic. "Manual" mode is for factory use only.

- ADR LS Gain for Side A

This parameter is used to fine-tune cameras to environments with a different lighting conditions, lenses, or optical filters. The raw A side reading of the light sensor is multiplied by "ADR LS Gain for Side A". If LSA_Gain > 1.0, the light sensor value becomes larger and the camera assumes the lighting is brighter at that particular location, so it reduces the camera gain. If LSA_Gain < 1.0, the light sensor value becomes smaller and the camera assumes the lighting is darker at that particular location, so it increases the camera gain. This setting is used only for daytime, as the light sensor value must be ZERO at night time.

Apply "ADR LS Gain for Side A" if the license plate in the daytime image is saturated to white. The worst condition typically occurs on a bright sunny day when the sun is directly hitting the side of the light sensor at 90 degrees.

- ADR LS Gain for Side B

See "ADR LS Gain for Side A". This gain is applied to Light Sensor Side B. Normally, it should be kept at 1.0.

- ADR Side A Offset

This parameter is used to fine-tune cameras to environments with a different lighting conditions, lenses, or optical filters. "ADR Side A offset" is used only at night time while the night light is turned on (the light sensor value moves below threshold). Normally, the light sensor value is ZERO at night time. If you add a larger value to the "ADR Side A offset", the camera adds this offset to the raw light sensor value, and thus it reduces camera gain (the image becomes darker.)

Apply "ADR Side A offset" if your night light is too strong and the license plate in the night time image is saturated to white.

- ADR Side B Offset

See "ADR Side A offset". This offset is applied to Light Sensor Side B. Normally, it should be kept at 0.

- ADR Shadow Factor

Shadow factor is used to calculate the contrast of the Light Sensor A Side to the B Side of the light sensor. Based on this Shadow Factor, the camera's ADR logic optimizes the camera parameters (exposure time, gain, vtop, vbot, pedestal). Please do not change this value and keep the factory default (See EN to LC Interface Document for the factory default).

- ADR Shutter Max

Based on the light sensor reading, the camera's ADR (Automatic Dynamic Range Control) optimizes the exposure time of the camera, and this setting is the upper limit of the exposure time range. Normally, a monochrome camera is set to 500 usec, as the FlashHead strobes the light only for 500 usec. A color camera can hold a longer exposure time, but keep in mind that the motion blur is severe if the "ADR Shutter Max" is longer than 1 msec. Increase "ADR Shutter Max" if the night image is too dark and you can accept more motion blur.

- ADR Shutter Min

Minimum or shortest exposure time that the camera ADR control will adjust to. Keep this to the factory default (See EN to LC Interface Document for the factory default).

- ADR Debug Side A

This value is read-only when "Camera ADR Control" is set to "ADR Control (using Light Sensor)". ENSetup software displays the raw reading of the light sensor A Side value. If "Camera ADR Control" is set to "Debug" mode, you can write an A Side value to simulate the camera ADR. See "Camera ADR Control".

- ADR Debug Side B

See "ADR Debug Side A". This is for Light Sensor Side B.

- ADR White-to-Blue Ratio

"ADR White to Blue Ratio" is the ratio between a white plate and blue plate, and is used to optimize the camera parameters. This value is optimized by JAI, and should be kept at factory default. Please do not change it.

- Camera Shutter Mode

This is read-only status. Current setting of camera exposure time (dial). To find out Dial vs exposure time (us) relationship, please see Operational Manual.

- Camera Gain

This is read-only status. Current setting of camera gain.

- Camera Vtop

This is read-only status. Current setting of camera ADC Vtop setting. Normally, Vtop is kept to 255. The value is lowered only if the system needs extra gain in night time (Only 9720EN).

- Camera Vbot

This is read-only status. Current setting of camera ADC Vbot setting. Vbot is kept to 0 at night time. The camera's ADR logic raises Vbot in sunny daytime to increase the contrast of the license plate.

6.3.2 Electronic Shutter

Normally, exposure time is controlled automatically by ADR (Automatic Dynamic Range) control algorithm inside the EN, based on the output from light sensor. However during nighttime installations it is often convenient to manually adjust the shutter time to a larger value so that the focusing targets and vehicle used for setup are easily seen with the available road lighting. Manually adjusting shutter speed can also be useful for certain types of debugging (See Section 7.2, "Problem 2: EN Setup Software Found the Camera, But the Video Image is Too Dark or Just Black," on page 47).

The following exposure times are supported

Table 6 EN Exposure Times

Shutter Dial	TS(C)-2030EN/TS(C)-2076EN (55.0 μ s x H + 28.7 μ s)		TS(C)-1327EN (633 μ s x H + 5.1 μ s)		TS(C)-4032EN (24 μ s x H)	
	Exposure Time (H)	Exposure Time (μ s)	Exposure Time (H)	Exposure Time (μ s)	Exposure Time (H)	Exposure Time (μ s)
1	1	83.7	1/2	36.8	1	24
2	2	138.7	1	68.4	1.5	36
3	3	193.7	2	131.7	2	48
4	4	248.7	4	258.3	3	72
5	6	358.7	6	384.9	4	96
6	8	468.7	8	511.5	6	144
7	9	523.7	9	574.8	8	192
8	10	578.7	10	638.1	12	288
9	11	633.7	11	701.4	16	384
A	13	743.7	13	828.0	21	504
B	15	853.7	15	954.6	26	624
C	17	963.7	17	1081.2	36	864
D	18	1,018.7	18	1144.5	44	1056
E	126	6,958.7	126	7980.9	64	1536
F	262	14,438.7	262	16,589.7	84	2016
0	525	28,903.7	1040	65,837.1	1365	32,760

When the EN camera is controlled by light sensor, user can monitor the shutter value in EN setup software by accessing "Camera Shutter" status register (Address = 233). Note that this Shutter value is dial number and not actual exposure time, (left side of the table above).

User needs to set appropriate "ADR Shutter Max" and "ADR Shutter Min" config registers (Address =53 and 58 respectively) to limit exposure time. In daytime, "ADR Shutter Min" limits the shortest exposure time (or faster shutter speed). In night time, "ADR Shutter Max" limits the longest exposure time (or slowest shutter speed). The factory default settings of "ADR Shutter Min" and "ADR Shutter Max" are as follows: Factory Default Settings of the ADR Shutter Min. and Max.

Table 7 Factory Default Settings of the ADR Shutter Min. and Max.

	TS(C)-2030EN/TS-2076EN		TS(C)-1327EN		TS(C)-4032EN	
	BW	Color	BW	Color	BW	Color
ADR shutter Min	Dial=1 (1H)	Dial=3 (3H)	Dial=1 (1/2H)	Dial=3 (2H)	Dial=1 (1H)	Dial=5 (4H)
ADR Shutter Max	Dial=7 (9H)	Dial=11 (15H)	Dial=6 (8H)	Dial=11 (15H)	Dial=10 (21H)	Dial=12 (36H)

6.3.3 Video Amplifier Gain Control

Normally, video amplifier gain is controlled automatically by an ADR (Automatic Dynamic Range) control algorithm inside the EN, based on the output from the light sensor. However, the user can manually change gain value by using the EN setup software (See Section 7.2 on page 47 for more information). Normally, gain would be manually adjusted only when a different gain (and electronic shutter setting) is needed to see the vehicle and focusing targets used for setup in whatever road lighting is available at the installation site.

The following table shows the gain setting against the actual gain (dB): Gain Table (BW EN Camera)

Table 8 Gain Table (BW EN Camera)

TS-2030EN/TS-2076EN	
Gain Value	dB
0	7.6
36	9.9
60	11.4
83	12.9
112	14.9
143	16.8
176	18.9
200	20.5
230	22.4
255	24.0

TS-1327EN	
Gain Value	dB
0	10
100	14.3
205	19
255	21

TS-4032EN	
Gain Value	dB
0	5.7
32	6.3
64	6.9
96	7.5
128	8.1
160	8.7
192	9.4
224	10.0
255	10.6

Note: Gain Value is Gain entry in camera LUT after calibration.

Table 9 Gain Table (Color EN Camera)

TSC-2030EN/TSC-2076EN	
Gain Value	dB
0	11.8
22	13.4
46	15.1
74	17.0
105	19.2
140	21.7
165	23.4
192	25.5
226	27.8
255	27.7

TSC-1327EN	
Gain Value	dB
0	10
72	14.3
148	19
230	24.3
255	27

TSC-4032EN	
Gain Value	dB
0	6.5
32	8.0
64	9.5
96	11.1
128	12.6
160	14.1
192	15.6
224	17.1
255	18.6

Note: Gain Value is Gain entry in camera LUT after calibration.

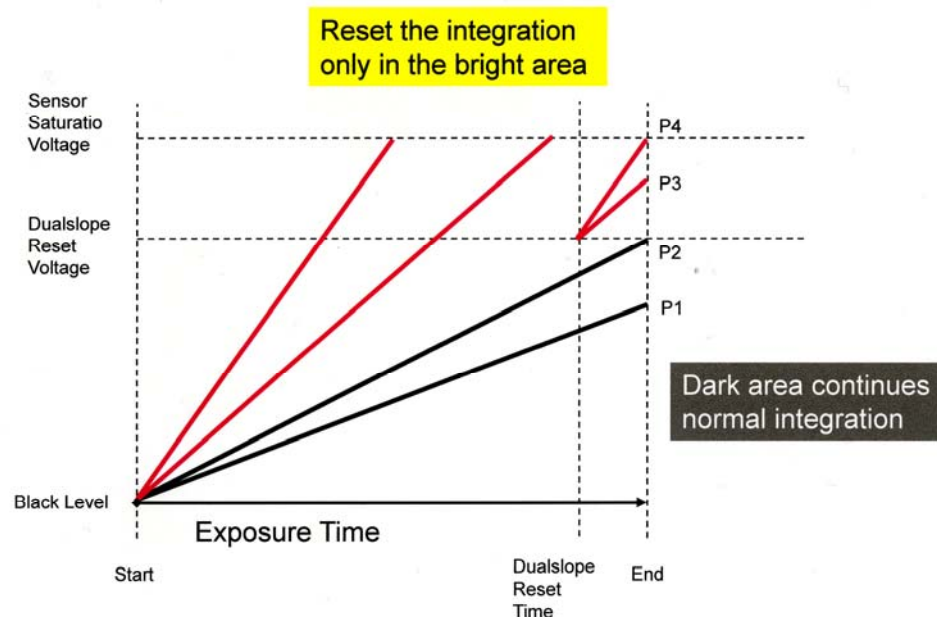
When the EN camera is controlled by a light sensor, user can monitor the gain value in the EN setup software by accessing "Camera Gain" status register (Address = 232). This Gain value is the Gain Table Entry in LUT after calibration (left side of the table above).

6.3.4 HDR Mode (4032EN Only)

By enabling HDR mode, the dynamic range increases by 12dB (x4). In other words, the camera can include the meaningful grayscale information up to 4 times normal linear saturation level.

You can consider enabling this feature, if your application needs to avoid unexpected over-exposure caused by reflection of sunlight, structural shadows, or large variations of plate reflections.

Normally, once the plate is over-exposed, there is no information to be extracted for post processing such as LPR or matcher. HDR mode prevents the image from saturating too fast, while maintaining the sensitivity in a dark area. Therefore, you can always capture readable plate images regardless of severe abnormal conditions.

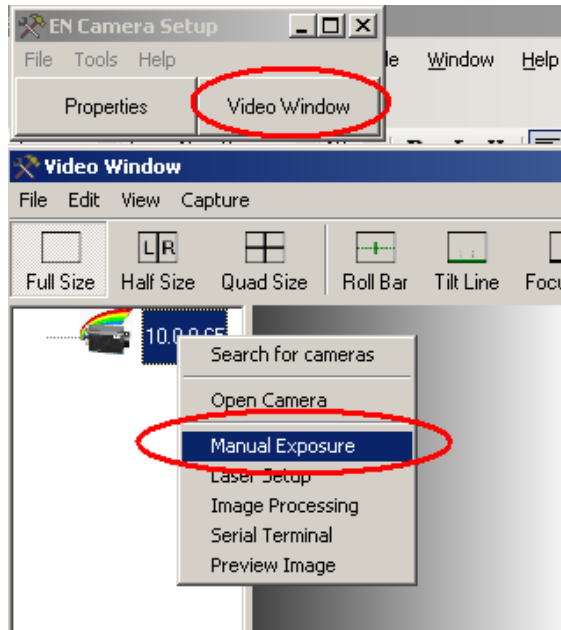


In the example above, Pixel P1 and P2 (dark pixels) continue integration without reset. Pixel P3 and P4 (bright pixels) are reset and continue the integration from the dual-slope reset voltage. Therefore, the saturation speed of the bright pixels can be slowed down, while maintaining detail information in the dark area.

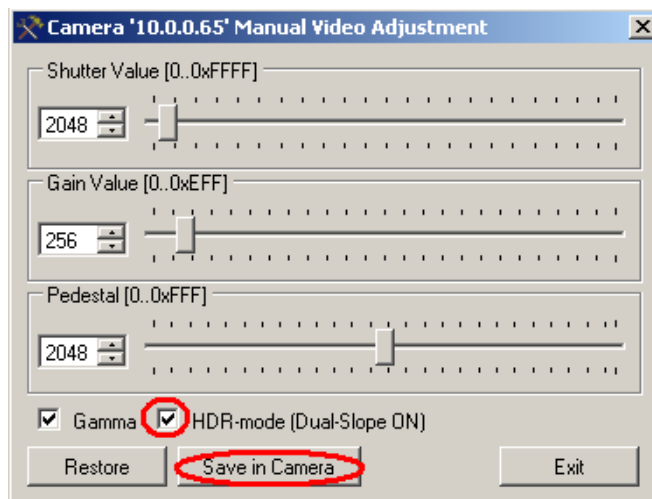
By using the light sensor, the camera automatically estimates the sensor saturation voltage, optimal exposure time and gain. Then, the camera automatically adjusts the dual-slope reset voltage and reset timing dynamically, in order to include an extra 12dB (x4) dynamic range. This process is fully-automated to achieve a total 139dB system dynamic range.

To enable the HDR mode,

1. Start ENSetup software.
2. Open Video Window.
3. Right-click the camera icon, and select "Manual Exposure" menu item.



4. Click HDR mode check box and "Save in Camera" button. To disable HDR mode, uncheck the box and click "Save in Camera" button.



If HDR mode is enabled, set the target grayscale of the license plate to 190-200DN, during the installation, by adjusting "ADR A side Gain" (daytime), and "ADR A side Offset" (night time). See section 6.3.1 for detail.

6.4 Flash/Nighttime Light Control

The strobe and continuous nighttime light controls are critical at nighttime. ADR (Automatic Dynamic Range) control inside the EN automatically turns on and off the strobe and night light based

on the output from the light sensor. The user can manually turn on and off the strobe and night light if necessary. You need to be able to access the following registers by means of the EN setup software.

Register Address 10: Night Light Control

Register Address 11: Night Light ON threshold and Flash enable. Register Address 12: Night Light OFF threshold and Flash enable. Register Address 50: Camera ADR Control

The distance and angle of the strobe unit toward the target is critical and must be optimized. Please refer to the VIS400 Installation Manual for more information.

6.5 External Control

6.5.1 RS-485

The EN Camera has the ability to connect multiple cameras on the same RS-485 network. Each camera has an individual ID number selectable via control registers; Camera RS-485 group register (address=107) and Camera RS-485 address registers (address=109). Thus it is possible to send a serial RS-485 trigger to any or all of the cameras. RS-485 communication is accessed via the 26-pin connector on the rear panel of the camera.

RS-485 is typically used by the lane controller to send serial trigger or to send DataID message to validate the HW TTL trigger.

RS-485 is a differential signal communication for longer distance. Since RS-485 is not a common port for PCs, a plug-in 485 board such as ULTRA-485 (Industrial Computer Source, San Diego, CA, 800-523-2320) or compatible is required.

6.5.2 Ethernet

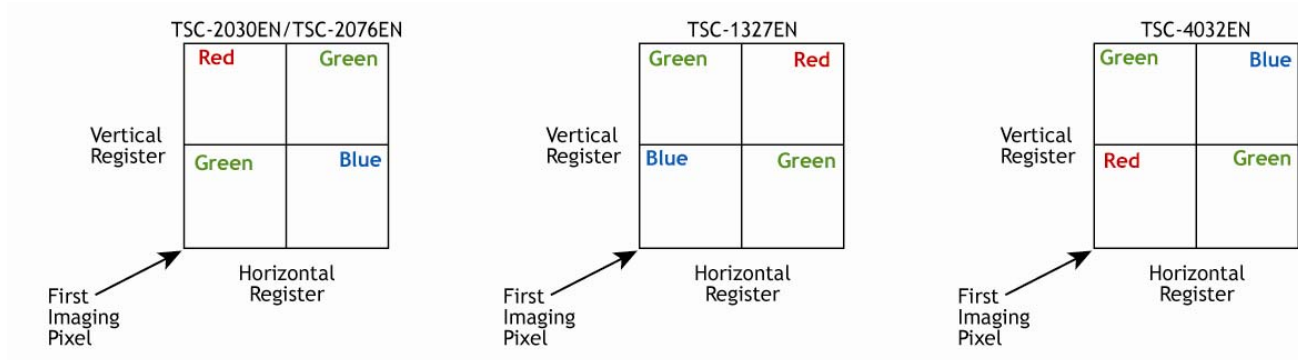
The primary benefit of Ethernet is the scalability of the system; you can add as many EN cameras as you want to the system. For example, you can connect up to 255 Ethernet devices to one class A subnet. Command/Status register access and image transfer are securely done over TCP/IP protocol. In addition to the message-based TCP image transfer, sniffing image on UDP is also supported. Captured images are buffered inside EN camera, and can be automatically transferred to FTP server. Ethernet trigger can be used for applications where time critical response is not required as hardware TTL trigger.

All functions over Ethernet are accessible by EN setup software. Please refer to VIS300/400EN Setup User's Guide (Doc Number 4087-72-005).

6.6 Color Filter Array (Color Version)

The color filter array requires software to interpolate color. If the proper interpolation software is not present the camera provides an 8-bit monochrome image. The necessary DLL is available from JAI Inc.. The JAI Inc. EN Camera cameras use the Bayer color mosaic filter pattern (see Figure 16 below). The CFA contains 50% green photo sites and 25% red and 25% blue photo sites.

Figure 18. CFA Pattern



Because the color filter array contains only a single R, G or B color in each pixel, the restored image has to fill in colors in the missing pixel locations. The software uses neighboring pixel information to "guess" the missing colors to make smooth, clear images. This is called "color interpolation."

Because the EN Camera does not contain internal color-processing circuitry, viewer software must perform color interpolation on host PC side. The EN setup software supports color interpolation.

After color interpolation, white balance must be properly done. Otherwise, gray or white objects cannot be seen as gray or white. Each EN Camera (color) camera is calibrated in simulated daytime condition and each image (TIF/JPEG) transferred to host PC contains Rgain and Bgain with regard to Green. By decoding TIF/JPEG header, Viewer software can properly perform white balance. Please refer to "LC To EN Interface Document" (Doc number 69-1198) for more information (color).

Please note that the factory default setting of the EN Camera (color) turns off Gamma correction, because the non-linearity of the Gamma response curve degrades white balancing. Only linear LUT is used.

Also, it is important to keep in mind that a lossy JPEG encoding will cause color information loss. Viewer software cannot reconstruct the color image properly after it has been encoded to JPEG format. In order to reconstruct the color properly, users must use the raw TIF image format only.

6.7 Image Formats

Two image formats are supported; TIF and JPEG.

The TIF Format image is always ON, and users cannot turn it off. "Image Acquisition 1" and "Image Acquisition 2" config registers (Address = 3 and 9, respectively) control which image format to choose. Multiple image formats, such as both TIF and JPEG, can be selected.

Whether you choose TIF or JPEG format, images sent by the EN cameras contain additional information other than just pixel information. TIF/JPEG header includes ADR information (shutter, gain, Vtop, Vbottom), TimeStamps, Network setting (IP address, MAC address), Error status, and much more. Please refer to the "LC to EN Interface" document for details concerning TIF tagging.

6.7.1 TIF Format

The uncompressed (or raw) TIF format is the best choice to maintain the accuracy of the pixel information for further image analysis and processing.

For the EN Camera (color) model, the user should deal only with the TIF format image, because detailed color pixel information will be lost in the JPEG format image.

Please refer to the "LC to EN Interface" document for the detailed TIF header.

6.7.2 JPEG Format

JPEG is the industry-standard format for lossy image compression. Output file size, quality and speed of the encoding depends on the quality setting. The user can set the proper quality setting by accessing the "JPEG Quality Factor" config register (Address = 46). The factory default is 85.

Access to "Image Acquisition 1" and "Image Acquisition 2" config registers (Address = 3 and 9, respectively) and turn on JPEG format. Factory default setting is TIF format only.

If JPEG quality factor is high (above 85) and image contains complex detail information, the output file size of JPEG encoding becomes larger. JPEG image size must be properly defined in "Storage Setup" of JPEG. If the output file size exceeds the pr defined JPEG image size, the result JPEG image will not contain the full resolution of the image. Please refer to Section 6.9, "Image Buffering," on page 44).

For the EN Camera (color) model, the user should not deal only with the JPEG format image, because this format will not retain detailed color pixel information.

Please refer to the "LC to EN Interface" document for details about the JPEG header.

6.8 Image Transfer

6.8.1 UDP Image Transfer on Setup Channel

The EN camera can send video images over TCP (message-based) on the control channel, or UDP (sniffing mode) on the setup channel, or both. Image transfer over UDP is intended for live video display to focus lens or for sniffing external triggers (HW TTL trigger, Ethernet Trigger, or RS485 Serial Trigger) without disturbing continuous normal operation with Lane Controller. The "Live" or "Snap" buttons on the UDP setup channel do not send images to the FTP server or the lane controller on TCP (message-based) image transfer. Half image and quarter images are supported only on the UDP setup channel. The raw image format is the only one supported by the UDP setup channel; JPEG is not supported.

UDP setup images are easy to enable and disable. The user can access the "EN Setup Trigger Source" register (Address = 111) and "EN Setup Image size" register (Address = 112) to change the trigger source and image size. Live image transfer can be slowed down by setting "EN Setup UDP Inter-Packet Delay" register (Address = 110). It is important to note that when multiple host PCs (clients) connect to the EN camera, only the last client who changes the "EN Setup Trigger Source" register or "EN Setup Image size" register will receive the UDP setup image.

6.8.2 TCP Message-Based Image Transfer on the Control Channel

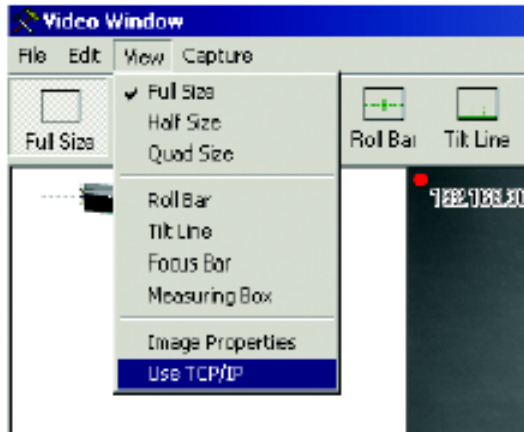
Image transfer over TCP is intended for more secure image transfer. Even if the packet is corrupt, the TCP/IP mechanism automatically resends the missing/corrupt packets. Full size, Odd field, or Even field images are supported and both raw TIF images and compressed JPEG images are supported on TCP control channel.

Unlike the setup channel that can send only one uni-cast UDP image to a single client (host PC), the control channel can send the identical image to multiple host PCs (clients) over TCP. However, the host PC has to respond to "DATA_RDY" message that the EN camera sends when an external trigger is input (HW TTL trigger, Ethernet trigger, or RS-485 trigger). If the host PC sends a "SEND_DATA" message to the EN camera, then the EN camera sends TCP image (TIF, or JPEG, or both) over the Control channel.

For detailed register and interface information, please refer to the "EN to LC Interface" document.

As a default, the EN setup software receives all images over UDP (setup channel). However, if you prefer to switch to TCP images, you can do so by enabling the "Use TCP/IP" option. This is under the "View" menu on the Video Window.

Figure 19. Enable TCP Image



An API (application program interface) for Windows is available. Using an API, the time required to develop software for device discovery, command communication, and image transfer can be shortened. Please contact JAI Inc. for further information.

6.9 Image Buffering

Full size TIF images, JPEG images, and ODD/EVEN field images are independently managed in image buffers. Each buffer is a sequential image queue. When the index reaches the last image, the user can select either to overwrite the oldest image (or the first image), or to stop writing. Also, the user can set the depth of the queue and the size of the JPEG image, while TIF, and ODD/EVEN field image sizes are fixed. These image queue buffer operations are done using EN setup software by accessing the "Storage Setup" command.

As a factory default, the image size and queue depth are defined as the following;

Table 10 Factory Default Storage Setup of Image Buffering

Parameters	9720 (BW)	9720 (Color)	2030 (BW)	2030 (Color)	2076 (BW)	2076 (Color)	1327 (BW)	1327 (Color)	4032 (BW)	4032 (Color)
TiF queue size	20	25	15	20	10	13	15	15	20	23
JPEG size	20	0	15	0	10	0	15	0	20	0

Please refer to the "EN-to-LC Interface Document" for more information.

6.10 FTP

FTP (File Transfer Protocol) is the industry-standard file transfer protocol. All EN cameras have an FTP client built-in. TIF image, JPEG image, or both can be transferred to the FTP server automatically.

FTP server's IP address, username, password, and subdirectory name must be properly set by FTP command. Additionally, a 2nd FTP server is supported in case the 1st FTP server is accidentally down. Please refer to the "EN-to-LC Interface" document for the FTP command.

Additionally, the FTP server must be properly set up. Make sure to create a username and password, and to allow read/write/modify access so that the EN camera can write image files in the sub-directory of the FTP server's hard disk. FTP server's hard disk must be regularly cleaned up, otherwise hard disk capacity becomes full and EN camera cannot write image files.

The default FTP port is 21, but the user can change this port number. Please refer to the Troubleshooting section for various FTP server performance tests.

6.11 NTP (Network Time Protocol)

The EN Camera supports the NTP (Network Time Protocol) client. NTP is the industry-standard time synchronization mechanism over the network. For LAN, the synchronization accuracy within a few milliseconds is achievable. Normally, the EN cameras can maintain the accuracy within 10ms as a worst-case scenario in LAN.

All NTP setup can be done using the EN setup software.

Using the EN setup software, user can access to "NTP client enable" config register (address = 60) to turn ON or OFF the NTP feature. EN camera supports up to 3 NTP servers' IP addresses (Config register address = 61, 62, and 63).

For the first time when the EN camera is set up for NTP, the EN camera optimizes the drift of the internal clock with regard to the NTP server in your LAN. This takes approximately 1-2 hours to reach within a few millisecond range of the estimated error. This Drift file is saved in non-volatile memory and when power is recycled, the EN camera will read the saved NTP Drift file and the next settlement will not take too long.

If NTP is still not synchronized with the NTP server(s), "NTP status" register (address=239) shows "UNSYNC" status (=0x40). After NTP is finally synchronized with NTP servers(s), "NTP status" register shows "PLL" status (=0x01) and "NTP Estimate Error" status register (address=238) shows the estimated clock drift from the NTP server(s).

If the "NTP Estimate Error" exceeds the values predefined in the "NTP Max Estimate Error" config register (address = 64), then the EN camera sends an error message to the lane controller or any client connecting to EN camera. Please refer to the "LC-to-EN Interface" document for details about this error message.

If you decided to turn OFF the NTP feature, please keep in mind that clock drift is approximately 1.5 second per day. Therefore, you need to send an Ethernet command to synchronize the clock from host PC on a regular basis (twice a day, every day, or every few days). Write "Real Time Clock UTC" register (Address = 102). Please note that the internal millisecond counter is reset to zero when you write a new value to the "Real Time Clock UTC" register

7 Frequently Asked Questions and Troubleshooting

7.1 Problem 1: What Password Allows Login from a RS232 Debug Port or Telnet Session to the EN Camera?

User name = root, password = JAIPULNiX

7.2 Problem 2: What is a Password to Start the EN Setup Software?

The factory default setting is, user name = Administrator; password = Password. Once you log in for the first time, you can change the administrator's password or create a new user. Find "User Administration" under the "Tools" menu item. The program allows you to manage your password, user management, and security level setting.

7.3 Problem 3: Does the EN Color Camera Produce a 24-bit Color Image?

1. The EN color camera outputs an 8-bit CFA (Color Filter Array) monochrome image. Color interpolation and white balance software are required in the host PC side to display a color image. White balance parameters (R gain and B gain) are calibrated at the factory, and then saved in the camera registers.
2. Turn off JPEG encoding, or you will lose color information.

7.4 Problem 4: EN Setup Software Does Not Find Any Camera in the Network

1. Make sure that your host PC and EN cameras have the same subnet address, and that their IP addresses are not identical. If the EN camera's IP address is 192.168.30.65, then you should not set the same IP address to the host PC.
2. If you have a firewall set up on your Windows computer, disable it. Also, be sure to enable network data transfer of the EN setup software.
3. If the EN camera's IP address is unknown, use the RS-232 debug cable. For more information, please see Section 2.2.2 (b on page 4).
4. If the EN camera is set to DHCP client mode, then you need DHCP server in your network. Otherwise, a valid IP address is not assigned to the EN camera.

7.5 Problem 5: EN Setup Software Found the Camera, But the Video Image is too Dark or Just Black

1. Make sure that the iris of the lens is open. If the light sensor is connected, then it is controlling the camera parameters such as shutter, and gain. If the light sensor is set up outdoors and the EN camera is set up indoors in the daytime, then the image will look very dark, because the camera parameter is probably set to the highest shutter (1H exposure time), and lowest gain (Gain=min).
2. If you want to manually set camera parameters instead of light sensor control, you can do so by using EN setup software. In Video control window, right-click on the camera icon. Select "Manual Video Adjust." Set appropriate camera parameters manually. See Figure 6.2, "Asynchronous Reset," on page 36 for details about the camera parameters.

7.6 Problem 6: TTL Trigger/Ethernet Trigger/Serial RS-485 Trigger Does not Generate Trigger

1. Make sure that the "Trigger" register is set properly to enable TTL Trigger/Ethernet Trigger/Serial RS-485 trigger. In the "Properties" window of the EN setup software, you can read/write "Trigger" register.
2. If you choose dataID source to be RS-485 or Ethernet, make sure to send dataID within the pre/post message time window defined in those registers. If there is no dataID or the dataID is sent after or before the predefined window, then the trigger will be rejected as an invalid trigger. Make sure that you set the appropriate time pre/post message time window. The factory default setting of dataID source is self-generate mode.
3. If the TTL trigger is noisy, then pre/post trigger condition filter may reject the trigger input to the camera. TTL trigger must stay stable for a certain predefined pre-time before the trigger edge and post-time after the trigger edge. If not, then the trigger will not be generated. The factory default of pre- and post-time trigger is 1ms.
4. If TTL trigger pulse is noisy, then the trigger noise filter may reject the trigger input. TTL trigger pulse width smaller than pre-defined trigger filter time is ignored automatically by the FPGA as noise. The trigger noise filter factory default setting is 100us.

7.7 Problem 7: JPEG Image is Either Corrupt or Not a Full-Size Image

If the JPEG image size is set to be too small but the JPEG quality setting is too high, then the EN will fail to save entire resolutions of JPEG. The user can either increase the size of JPEG image size (See the Allocate Image Size section), or decrease JPEG Quality Setting. The factory default JPEG image size is 300Kbyte, and quality setting is 85.

7.8 Problem 8: EN Camera Does Not Send any FTP Image to the FTP Server

1. Make sure that the FTP server allows anonymous user for full-access operation (write/read/modify/ create directories).
2. If anonymous user is not used, make sure that the User Name, and Password on the FTP-client register settings on the EN side match those of the FTP-server setting on the host side.
3. Make sure that the FTP-server has enough hard disk space to store TIF/JPEG images.

7.9 Problem 9: FTP servers switch between primary server and second server, even if the hard disk is not full.

1. JAI has tested various FTP servers to compare performance differences. For Linux, we recommend PureFTP server. We do not recommend vsFTP server. For Windows, we recommend Cerberus FTP server. We do not recommend the IIS FTP server. Please contact JAIPULNIX for detail test data.
2. By increasing the time-out duration and retry count of FTP transfer, one can avoid accidentally switching between FTP servers. However, if you move the time-out and retry count too high, the EN Camera's image buffer (TIF or JPEG) may overflow and start losing images, depending on the frequency of the incoming triggers. The factory default is (OpenTimeout, DataPortTimeout, ControlPortTimeout, Max_Retry) = (1,1,1,3).
3. Make sure to turn off the logging feature of the FTP server. Logging decreases the host PC's system memory.
4. Limit the number of files under the same subdirectory. The factory default setting is 1000 files. If the system allows several thousand files in the same subdirectory, the FTP server performance degrades significantly .

7.10 Problem 10: The EN Camera Does not connect to light sensor.

1. Make sure to set the proper IP address and port number for the light sensor in the EN registers.
2. Verify that the ADR register is set to "Auto" to connect to the light sensor.

7.11 Problem 11: Light Sensor Connection is Not reliable.

Inconsistent light sensor connection and communication can be solved with the following changes;

For UDP connection (Recommended. Max connection = 128):

1. Access to HTTP server of MOXA (RS-485 to Ethernet converter). Check the version of firmware. Firmware must be 2.2 or later. If not, update the firmware.
2. Go to "Operating Settings" -> "Port 1" Change the following parameters.
3. Operation Mode UDP mode
4. Type the IP address of your EN cameras. Try to minimize the number of IP addresses, otherwise MOXA will transmit multiple messages.

For example, if the IP address of your EN cameras are 0.0.0.60, 10.0.0.70, 10.0.0.80, then, do not try to set the up as: "10.0.0.60 ~ 10.0.0.80". MOXA would transmit the same messages to 21 clients in this scenario.

Instead, set up the up as: "10.0.0.60 ~ (none) 10.0.0.70~ (none), 10.0.0.80~(none)". This example transmits to only 3 clients.

5. Make sure to set UDP mode in EN LightSensor register.
6. If you want the EN camera to connect multiple MOXA devices (up to 2 MOXAs), do not assign the same port number for performance reasons. Assign different port numbers.

For TCP connections (not recommended, but for customers who require TCP connections). The maximum number of connections is four:

1. Access to HTTP server of MOXA (RS-485 to Ethernet converter). Check the version of firmware. Firmware must be 2.2 or later. If not, update the firmware.
2. Go to "Operating Settings" -> "Port 1" Change the following parameters.
3. Operation Mode TCP Server mode
 - TCP alive check time 1 min
 - Ignore jammed IP YES
4. Repeat the same changes to "Operating Settings"-> "Port 2".
5. Make sure to add 120Ohm termination resistor to the very end of MOXA RS485 data port. See the VIS-300 Installation Manual for diagram.

7.12 Problem 12: IO Board Communication Error

The IO board has a temperature sensor, a housing-open sensor, and other event sensors. When these events occur, the IO board sends a warning to the EN camera through the 9600 bps UART. If you are not using an IO board and a 26-pin HD-Sub cable, then you will have an IO board communication error message. In this situation, you can simply ignore this message.

If you are using an IO board and a 26-pin HD-Sub cable and still see an IO board communication error, then the baud rate of the EN camera may not match that of the IO board communication UART. In this situation, you need to set the EN IO board rate register to 9600 bps, so that it matches the IO board UART factory default (9600bps).

7.13 Problem 13: Night Time Image is Too Bright and License Plate is Whited Out or Saturated

1. Make sure that the light sensor is connected to the EN camera (Set ADR register to Auto).
2. Add ADR A offset to reduce the gain at night time. ADR offset is used only when the night light is turned on. When ADR A offset is high, the EN camera reduces the system gain and the brightness of the license plate is reduced. Add only to ADR A offset.

7.14 Problem 14: The Day Time Image is too Bright and Whites Out or Saturates the License Plate

1. Make sure that the light sensor is connected to the EN camera by setting the ADR register to Auto.
2. Add the ADR A side gain to reduce the gain at daytime. If B side is facing toward the same direction as the license plate, apply the ADR B side gain, instead.
3. The factory default setting is 1.00, but it can be changed up to 1.35 to reduce the camera's system gain. The ADR A and B side gain are used only when the night light is turned off (only in daytime).

7.15 Problem 15: Flash_Errorr Appears in the Error Register

1. If you use an AC Flash Unit, enter 1 in the config register (address = 42 decimal) so that the flash status is "Normally High. Goes Low at alarm."
2. If you use DC Flash Unit, enter 2 to config register (address = 42 decimal) so that flash status is "Normally Low. Goes High at alarm."
3. After changing the register, save the setting to FlashROM.

7.16 Problem 16: Timestamp is Not Set to Current Local Time

1. Use the EN setup software to set local time. In the "Property" window, find the "Real Time Clock" register. If NTP is OFF, then the displayed time is estimated to drift about 1.5 second per day.
2. If NTP is ON, then the time is automatically synchronized with the NTP server. However, the timestamp inside the TIF/JPEG header is UTC in GMT time zone. The viewer's software will need to decode the UTC (GMT time zone) to sync appropriately with local time.

7.17 Information and Support Resources

For further information and support:

Phone: (408) 383-0300 (Request ITS technical support when the telephone call is answered.)

Toll-free: (800) 445-5444

Fax: (408) 383-0301

E-mail Americas: solutionssupport.americas@jai.com

E-mail Europe, Middle East, or Africa: solutionssupport.emea@jai.com

Mail: JAI Inc.

ATTN: Traffic Solutions

625 River Oaks Parkway

San Jose, CA 95134

Web Site: www.jai.com

8 Appendix

8.1 Specifications

Table 11 EN Camera Series Product Specifications Tables

Model	TS-2030EN/TSC-2030EN	TS-2076EN/TSC-2076EN
Sensor	1" progressive scan interline transfer CCD	
Active area	14.2mm (H) x 3.8mm (V)	14.2mm(H) x 5.7mm(V)
Active pixels	1920 (H) x 512 (V) pixels @ 30 fps	1920 (H) x 768 (V) pixels @ 21 fps
Cell size	7.4 μ m x 7.4 μ m	
Pixel clock	40MHz	
Resolution	Digital: 1920 (H) x 512 (V)	1920 (H) x 768 (V)
S/N Ratio	50dB min (BW) 48dB min. (Color)	
Video Output	Digital output: JAI Inc. proprietary protocol over TCP/IP	
Gamma	Gamma 0.55 forBW Linear for Color	
Lens Mount	C-mount	
Power Req.	12V DC \pm 10%, 450 mA (typical at 25° C) (800mA required at power-up)	
Operating Temp.	-10°Cto55°C	
Random Vibration	7 Grams (10Hz to 2000Hz)	
Shock	70G	
Weight	290 grams. 10.2 oz.	
EN Camera Processor Module		
CPU	Power PC 333MHz	
SDRAM	64MB	
O.S.	Real-time Linux	
External I/O Interfaces		
Trigger Interface	TTL. serial, or Ethernet input.	
Ethernet Interface	10/100 BaseT Ethernet, TCP/IR UDP. and FTP	
Serial Interfaces	2 UARTs and one RS-232 debug port	

EN Camera Series

Model	TS-1327EN/TSC-1327EN
Sensor	2/3" progressive scan interline transfer CCD
Active Area	8.94mm x 6.71mm
Active pixels	1392 (H) x 1040 (V) @ 15 fps
Cell size	6.45 μ m x 6.45 μ m
Pixel clock	27.5 MHz
Resolution	Digital: 1392 (H) x 1040 (V)
S/N ratio Mono / Color	52 dB min. / 48 dB min.
Sensitivity Mono Color	0.26 lux f=1.4 @ 15 fps 0.39 lux f=1.4 @ 15 fps
AGC	OFF, light-sensor controlled
Gamma Mono / Color	0.45 / 1.0 (linear)
Electronic shutter	"No-delay" async shutter 1/15 - 1/32,000
Spectral response	400-800 nm (mono)/300-750 nm(color)
Lens mount	C-mount (use 2/3" format lenses)
Power requirement	12V DC \pm 10%, 420 mA (typical at 25° C) (900 mA powerup surge current)
Operating temperature	-10° C to 55° C
Vibration	7 Grms (10 Hz to 320 Hz) Random
Shock	70G, 11 ms, half-sine
Weight	297 grams
Processor Module	
CPU	Power PC 333 MHz
SDRAM	64 MB
O/S	Real-time Linux, Monte Vista
External I/O interfaces	
Trigger interface	TTL, serial or Ethernet input
Ethernet interface	10/100 BaseT Ethernet, TCP/IP, FTP, UDP
Serial interfaces	2 serial TTL I/F and one RS-232 debug port
Options	
OP-IR	No IR cut filter
OP-RED	Red filter

Model	TS-4032EN/TSC-4032EN
Sensor	43.3 mm progressive scan CMOS
Active Area	24.6mm x 19.56mm
Active pixels	2048 (H) x 1628 (V) @ 19 fps
Cell size	12 µm x 12 µm
Pixel clock	66 MHz
Resolution	Digital: 2048 (H) x 1628 (V)
S/N ratio	56 dB min..
Dynamic range	139 dB total 66 dB imager (linear) 12 dB dual-slope algorithm 61 dB light sensor
Color (TSC-4032EN only)	Color interpolation SW required (provided by JAI upon request)
AGC	OFF, light-sensor controlled
Gamma Mono / Color	0.45
Electronic shutter	"No-delay" async global shutter 1/2000 - 1/42,000 (5 msec max)
Spectral response	400-1000 nm
Lens mount	M42 mount
Power requirement	12V DC ± 10%, TBD mA (typical at 25° C) (1.2 A powerup surge current)
Operating temperature	-10° C to 55° C
Vibration	7 Grms (10 Hz to 320 Hz) Random
Shock	70G, 11 ms, half-sine
Weight	417 grams
Processor Module	
CPU	Power PC
SDRAM	128 MB
O/S	Real-time Linux
External I/O interfaces	
Trigger interface	TTL, serial or Ethernet input
Ethernet interface	10/100 BaseT Ethernet, TCP/IP, FTP, UDP
Serial interfaces	2 serial TTL I/F and one RS-232 debug port
Options	
OP-IR	No IR cut filter
OP-RED	Red filter

8.2 Physical Dimensions

Figure 20. Physical Dimensions TS(C)-2030EN/TS(C)-2076EN/TS(C)-1327EN

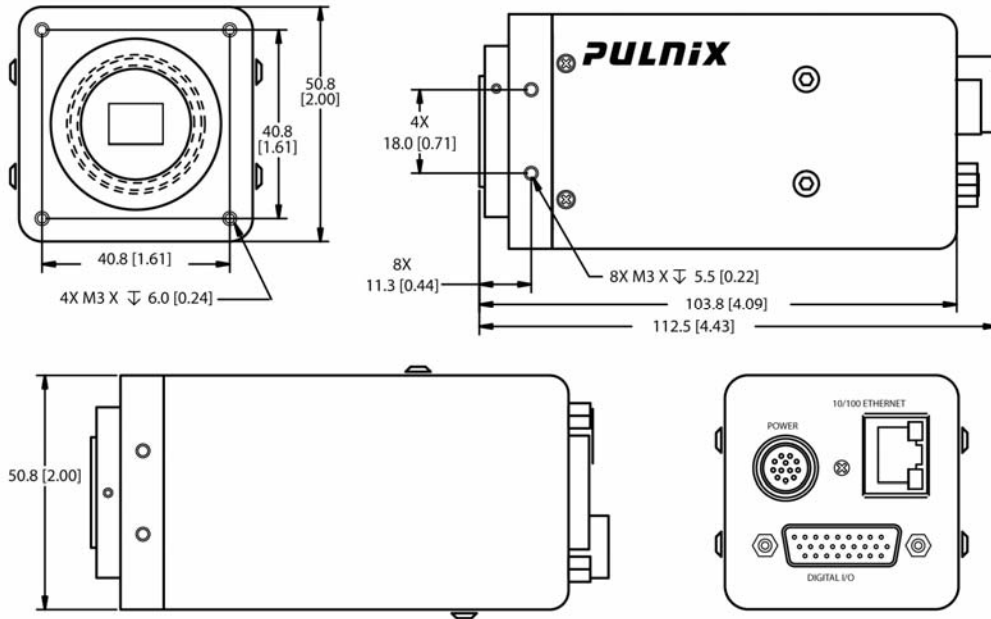
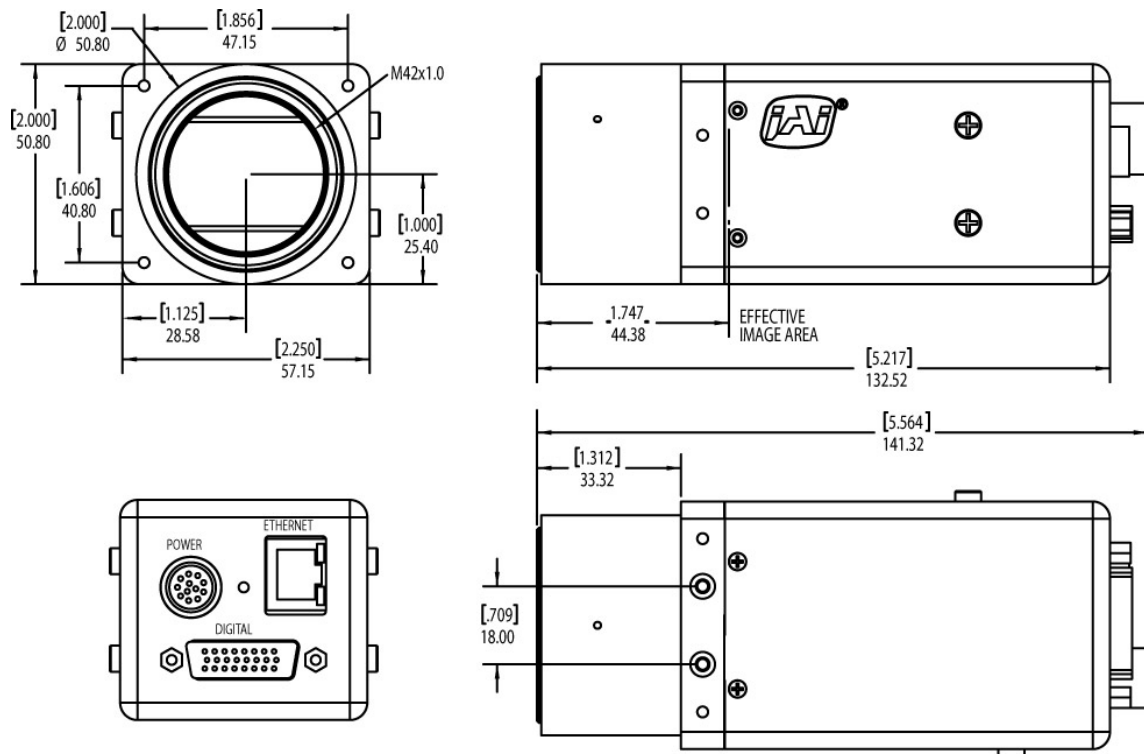


Figure 21. Physical Dimensions TS(C)-4032EN



8.3 Spectral Response

Figure 22. Spectral Response (B/W CCD)

TS-2030EN/TS-2076EN

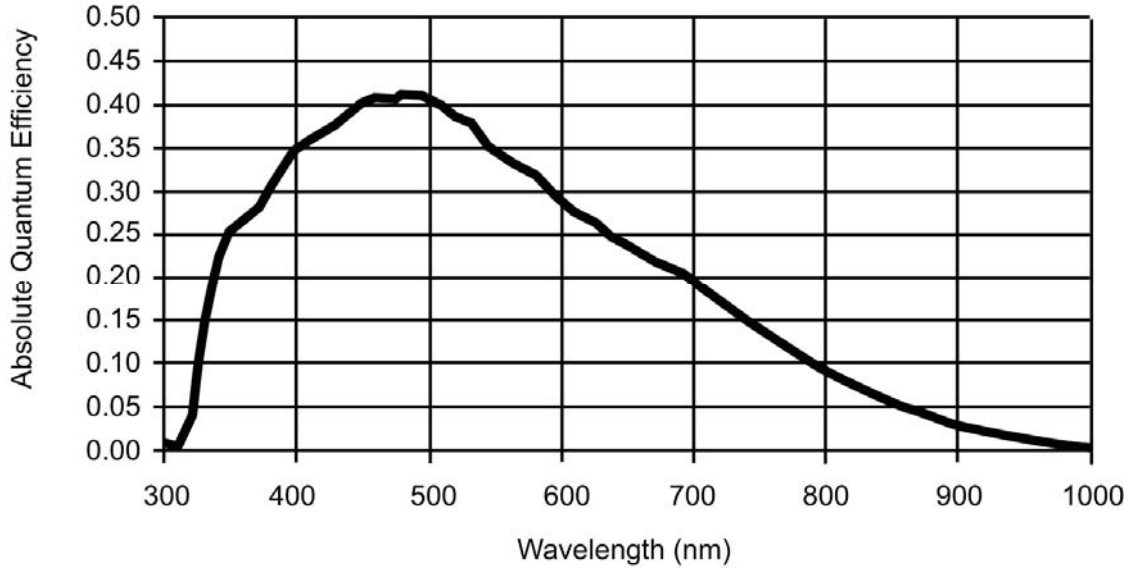


Figure 23. Spectral Response (B/W CCD) TS-1327EN

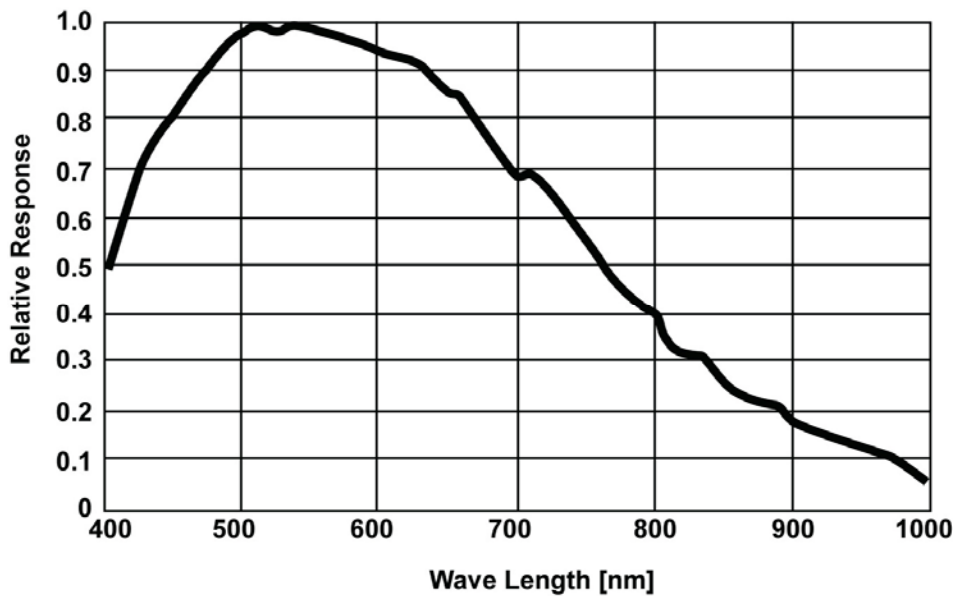


Figure 24. Spectral Response (B/W CMOS) TS-4032EN

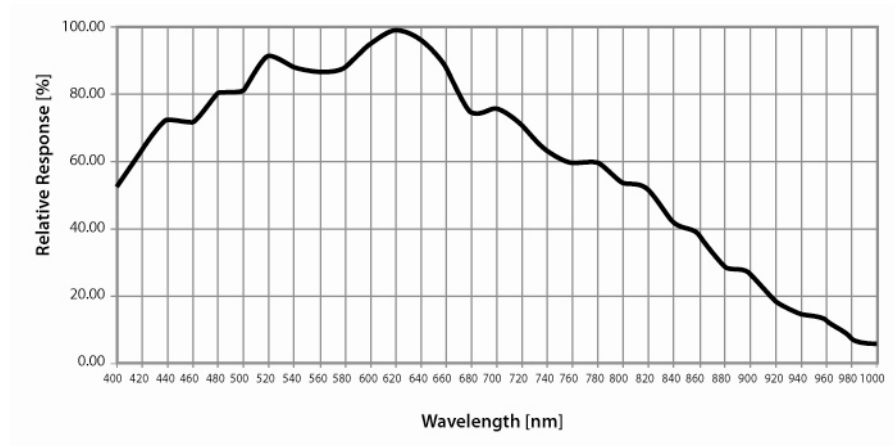


Figure 25. Spectral Response (Color CCD) TSC-2030EN/TSC-2076EN

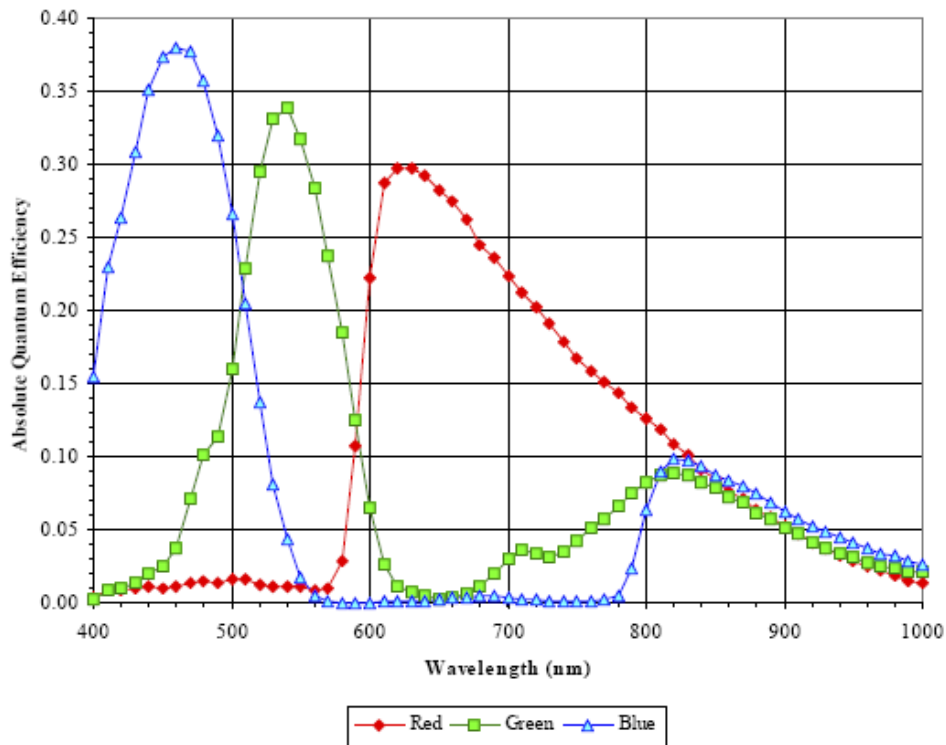


Figure 26. Spectral Response (Color CCD) TSC-1327EN

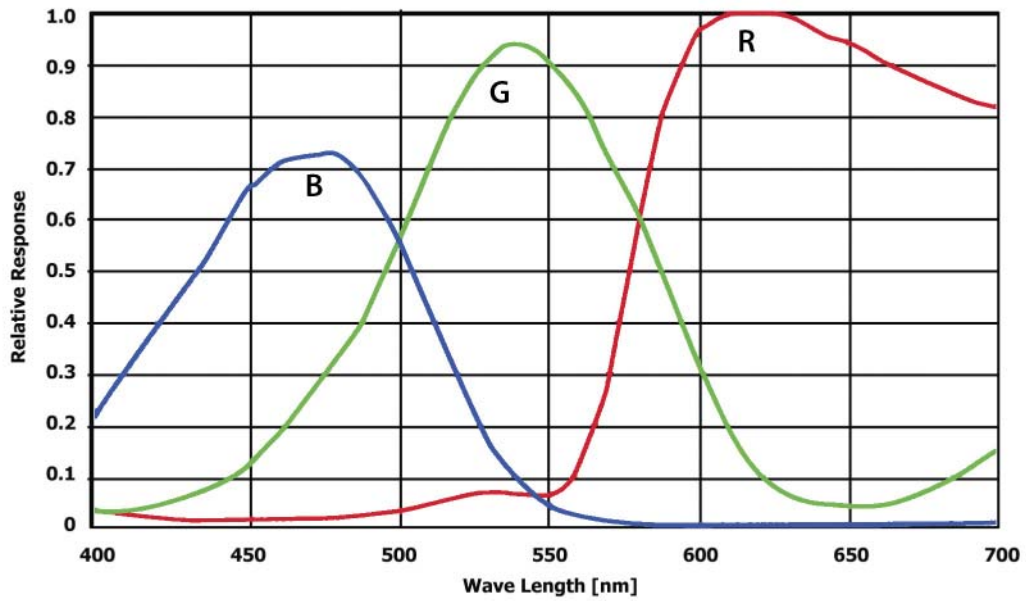


Figure 27. Spectral Response (Color CMOS) TSC-4032EN

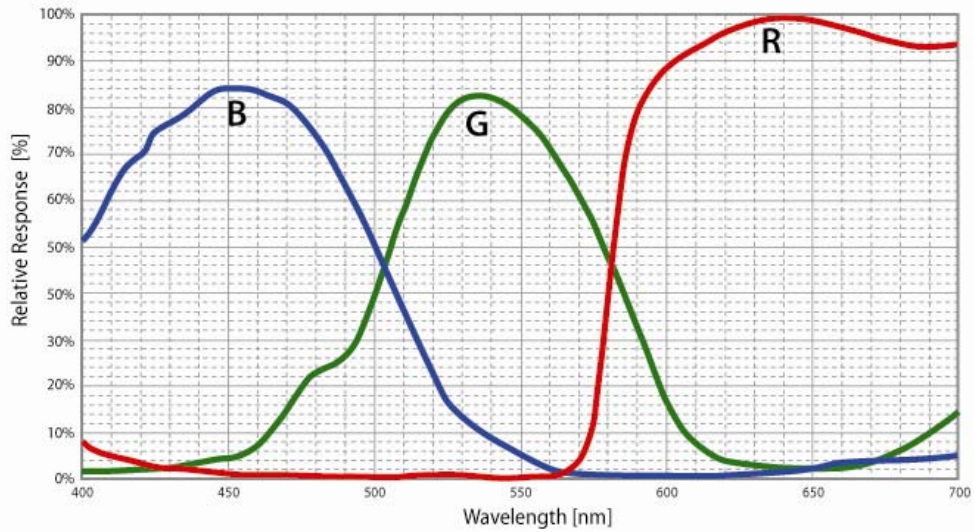


Figure 28. IR Cut Filter Response for monochrome cameras

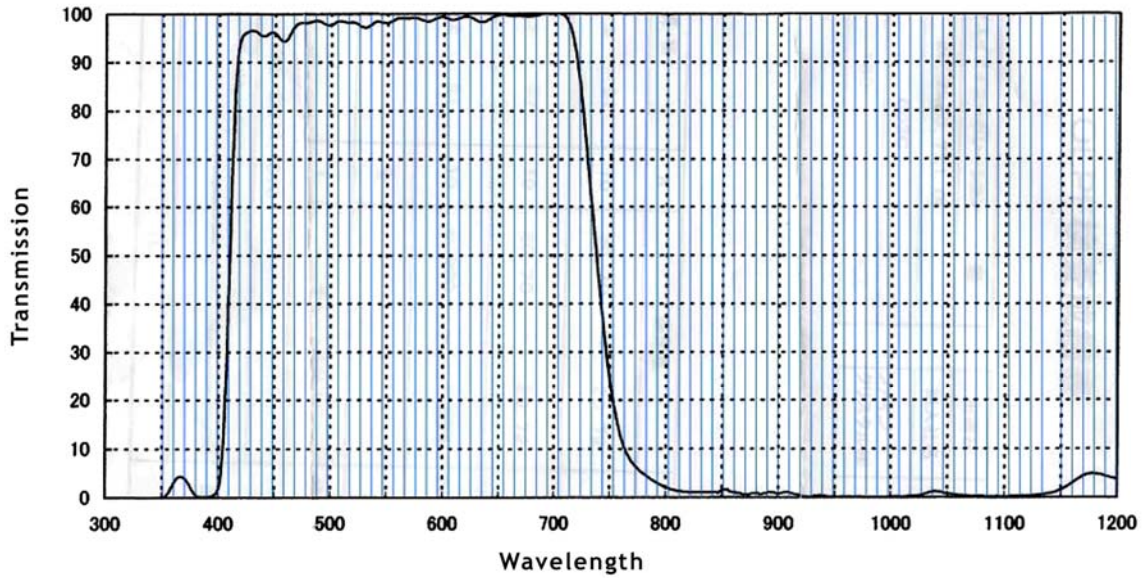


Figure 29. Red Filter Optical Characteristics for monochrome cameras

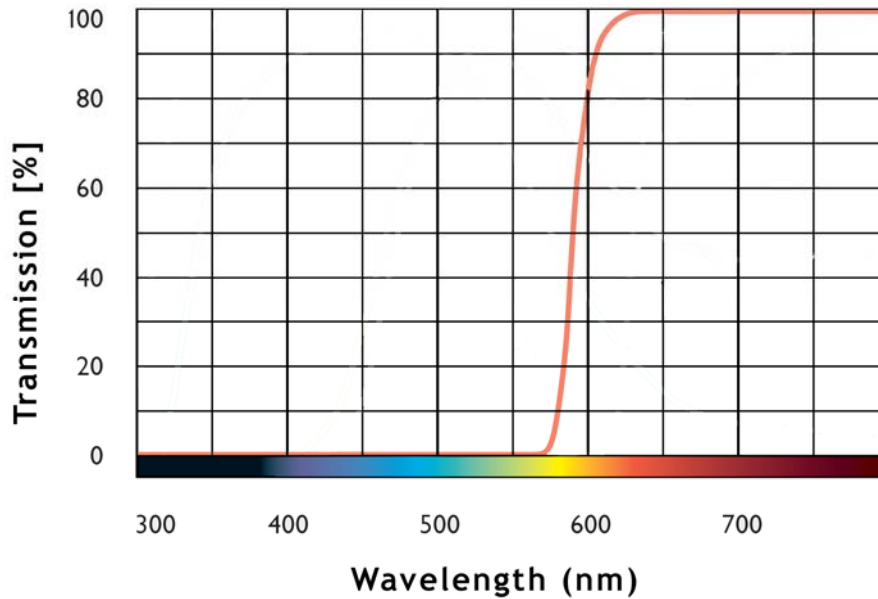


Figure 30. Color filter spectrum response of TSC-1327EN

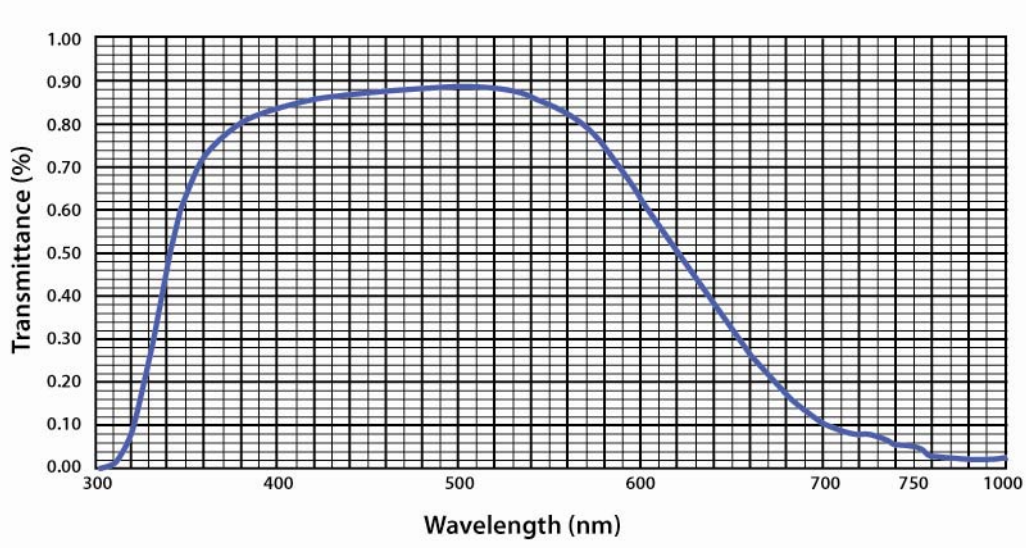
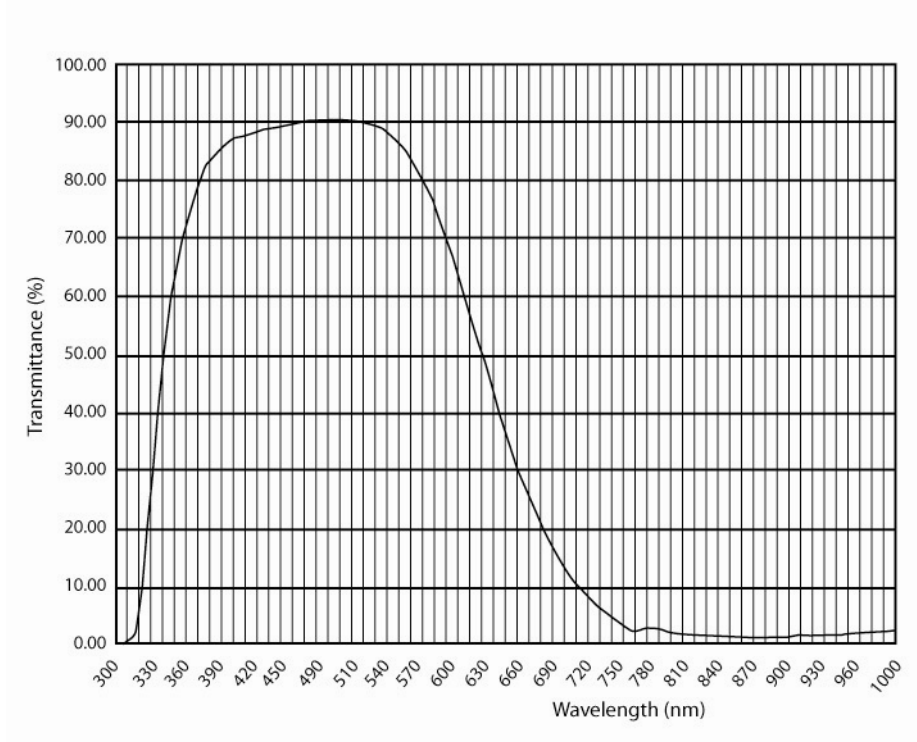


Figure 31. Color filter spectrum response of TSC-4032EN



9 Configurable Order Options for EN Cameras

9.1 OP-IR

Monochrome only, No IR cut filter.

9.2 OP-RED

Monochrome only, Red filter.

Europe, Middle East & Africa

Phone +45 4457 8888

Fax +45 4491 8880

Asia Pacific

Phone +81 45 440 0154

Fax +81 45 440 0166

Americas

Phone (Toll-Free) 1 800 445-5444

Phone +1 408 383-0301



Free Manuals Download Website

<http://myh66.com>

<http://usermanuals.us>

<http://www.somanuals.com>

<http://www.4manuals.cc>

<http://www.manual-lib.com>

<http://www.404manual.com>

<http://www.luxmanual.com>

<http://aubethermostatmanual.com>

Golf course search by state

<http://golfingnear.com>

Email search by domain

<http://emailbydomain.com>

Auto manuals search

<http://auto.somanuals.com>

TV manuals search

<http://tv.somanuals.com>