



encounter

out of this world sound system



6	english	easy setup guide
8	español	manual de instalación rápida
10	deutsch	aufbauanleitung
12	français	guide d'installation facile
14	italiano	guida d'installazione facile
16	日本語	取扱説明書

Harman Multimedia
8500 Balboa Blvd.
Northridge, California 91329
USA

www.JBL.com

Part No. 950-0074-001 Rev. B

encounter FCC Regulations

FCC Declaration of Conformity Statement

This device complies with Part 15 of the FCC Rules. Operation is subject to the following two conditions: (1) this device may not cause harmful interference, and (2) this device must accept any interference received, including interference that may cause undesired operation.

Radio and Television Interference

This equipment has been tested and found to comply with the limits for a Class B digital device, pursuant to Part 15 of the FCC Rules. These limits are designed to provide reasonable protection against harmful interference in a residential installation. This equipment

generates, uses, and can radiate radio frequency energy and, if not installed and used in accordance with the instructions, may cause harmful interference to radio communications. However, there is no guarantee that interference will not occur in a particular installation. If this equipment does cause interference to radio or television reception, which can be determined by turning the equipment off and then on, the user is encouraged to try to correct the interference by one or more of the following measures:

- Increase the separation between the equipment and receiver.
 - Connect the equipment to a different outlet so that the equipment and receiver are on different branch circuits.
 - Consult the dealer or an experienced radio/TV technician for help.
- Changes or modifications not expressly approved by JBL could void the user's authority to operate the equipment.

Harman Multimedia
8500 Balboa Blvd.
Northridge, California 91329
USA

www.JBL.com

encounter Safety Instructions

Please Read the Following Operation Precautions Before Use

- Read instructions – All safety and operating instructions should be read thoroughly before attempting to operate this audio system.
- Retain instructions for future reference.
- Heed warnings – All warnings on this audio system and in the operating instructions should be adhered to.
- Follow instructions– All operating and use instructions should be followed.
- **TO PREVENT THE RISK OF ELECTRIC SHOCK, DO NOT REMOVE THE COVER (OR BACK). THERE ARE NO USER SERVICEABLE PARTS INSIDE THIS UNIT. PLEASE REFER SERVICING TO QUALIFIED JBL CORPORATION SERVICE PERSONNEL.**
- Do not expose the speakers to liquid or solvent.
- Never remove grille covers in order to service the speaker system. The speaker system does not contain any user serviceable parts. Refer all servicing to the JBL Technical Support Group.

encounter Instrucciones de seguridad

Sírvase leer las siguientes instrucciones de operación antes de usar el producto

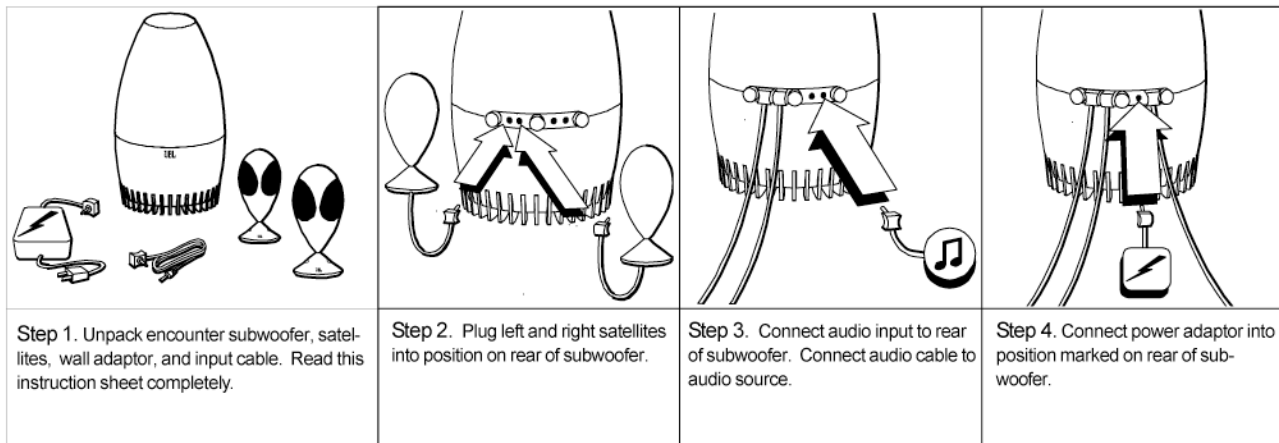
Advertencia: El uso de controles, ajustes o procedimientos diferentes a los especificados en estos documentos puede resultar en la exposición a descargas eléctricas, riesgos eléctricos y/o riesgos mecánicos.

- Lea las instrucciones – Es importante que lea completamente todas las instrucciones de seguridad y operación antes de usar este sistema de audio.
- Guarde las instrucciones para su futura referencia.
- Observe las advertencias – Es importante que observe todas las advertencias en este sistema de audio y en las instrucciones de operación.
- Siga las instrucciones – Siga todas las instrucciones de operación y uso.
- **PARA EVITAR EL RIESGO DE CHOQUES ELÉCTRICOS, NO RETIRE LA TAPA (O PANEL TRASERO). NO HAY PIEZAS SUSCEPTIBLES DE REPARACIÓN EN EL INTERIOR DE ESTA UNIDAD. TODO EL SERVICIO DE MANTENIMIENTO DEBE SER EFECTUADO POR EL PERSONAL DE SERVICIO CALIFICADO DE JBL.**
- No exponga los altavoces a líquidos ni solventes.

- Do not expose the speaker system to temperature or humidity extremes, direct sunlight, excessive dust, or vibrations.
- Place the speaker system on a stable, level surface. Do not drop, apply excessive force to the controls, or put heavy objects on top of the speaker.
- If cleaning is required, use a soft dry cloth. If necessary, use a damp cloth without any solvents.
- In order to protect the speaker system, avoid microphone feedback, continuous output from electronic musical instruments, or distorted output from any signal source
- Do not place the speakers close to fluorescent light sources or neon light fixtures.
- Although the speakers are magnetically shielded, keep magnetic storage media (disks and tapes) at least four inches from the speaker system in order to avoid data loss.
- **WARNING:** To reduce the risk of fire or electric shock, do not expose this speaker system to rain or moisture.
- **USE ONLY** JBL approved power supplies listed on the product label.

- No retire nunca las tapas de rejilla para tratar de reparar el sistema de altavoces. El sistema de altavoces no contiene ninguna pieza que pueda ser reparada por el usuario. Dirija todas sus preguntas de servicio al Grupo de Apoyo técnico de JBL.
- No exponga el sistema de altavoces a temperaturas o humedad extremas, luz solar directa, polvo excesivo o vibraciones.
- Coloque el sistema de altavoces sobre una superficie estable y nivelada. No lo deje caer ni aplique fuerza excesiva a los controles, como tampoco ponga objetos pesados sobre ningún altavoz.
- Si requiere limpieza, use un paño suave y seco. Si es necesario, humedézcalo con agua, pero no use ningún solvente.
- Para proteger el sistema de altavoces, evite la retroalimentación del micrófono, la salida continua de instrumentos musicales electrónicos o la salida distorsionada de cualquier fuente de señales.
- No coloque los altavoces cerca de luces fluorescentes o de neón.
- Aunque los altavoces están protegidos magnéticamente, mantenga los medios de almacenamiento magnético (tales como discos y cintas) a una distancia de por lo menos diez centímetros del sistema de altavoces para impedir la pérdida de datos.
- **ADVERTENCIA:** para reducir el riesgo de incendio o choque eléctrico, no exponga este sistema de altavoces a la lluvia o humedad.
- **UTILICE SOLAMENTE** las fuentes de alimentación aprobadas JBL enumeradas en la etiqueta del producto.

encounter Easy Setup Guide



Step 1. Unpack encounter subwoofer, satellites, wall adaptor, and input cable. Read this instruction sheet completely.

Step 2. Plug left and right satellites into position on rear of subwoofer.

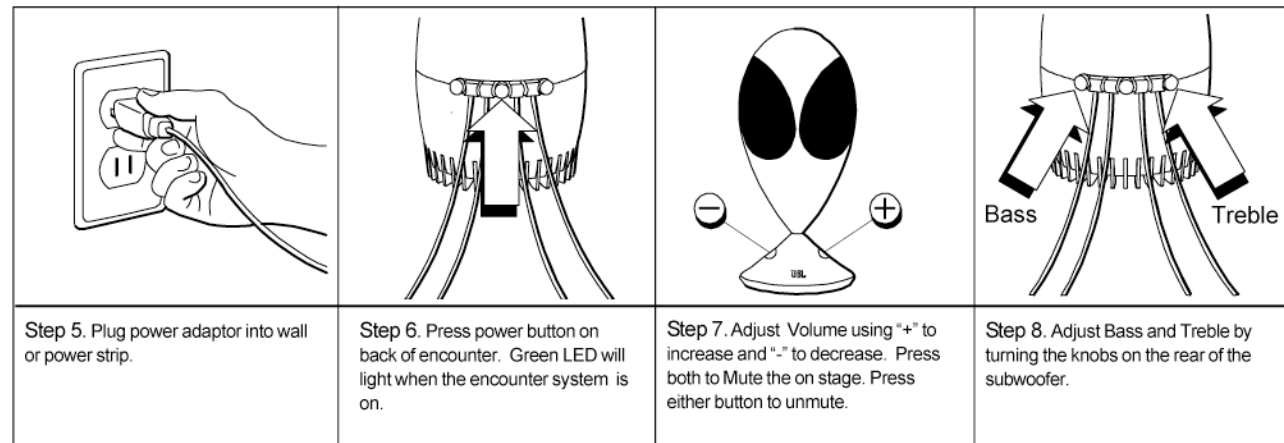
Step 3. Connect audio input to rear of subwoofer. Connect audio cable to audio source.

Step 4. Connect power adaptor into position marked on rear of subwoofer.

encounter specifications	Troubleshooting		
	Symptom	Possible problem	Solution
<p>Frequency range: 40Hz–20kHz Power consumption: 60 W maximum</p> <p>Satellites Transducers: (2) 1-inch full range per channel Amplifier output power: 13 W rms per channel</p> <p>Subwoofer Transducers: 6-inch Magnum Amplifier output power: 34 Wrms</p> <p>Dimensions:</p> <p>Satellites 4" (10.2 cm) diameter 7" (17.8 cm) tall</p> <p>Subwoofer 10" (25.4 cm) diameter 12" (30.5 cm) tall</p> <p>Weight: 8 pound = 3.6 kg</p>	<p>No sound from encounter speaker system.</p>	<p>No power to system.</p> <p>Power adapter plug not inserted correctly.</p> <p>No volume or low volume.</p> <p>Input source is low.</p>	<p>Ensure power supply is connected to live power source and properly connected to encounter. Please note: When encounter is powered, a green power LED on the front of the subwoofer should illuminate.</p> <p>Touch the volume "Up" (+) pad on the volume control to unmute and/or increase the system volume level.</p> <p>Note: Touching the volume "Down" (-) pad lowers the system volume. Touching both (+) and (-) volume control pads at the same time will mute the system.</p> <p>Increase the volume level on the audio source device.</p>

If you have any questions, or need further assistance, please visit www.JBL.com.

*These specifications are subject to change without notice.



Step 5. Plug power adaptor into wall or power strip.

Step 6. Press power button on back of encounter. Green LED will light when the encounter system is on.

Step 7. Adjust Volume using "+" to increase and "-" to decrease. Press both to Mute the on stage. Press either button to unmute.

Step 8. Adjust Bass and Treble by turning the knobs on the rear of the subwoofer.

www.JBL.com		
Symptom	Possible problem	Solution
No Power. Green LED is not on.	<p>Wall adaptor is not plugged into encounter correctly.</p> <p>Wall adaptor is not receiving AC power.</p>	<p>Check connection of wall adaptor.</p> <p>Place wall adaptor in a known powered outlet. Test outlet with a lamp or other device.</p>
No Volume Control on Right Satellite.	<p>Right satellite is not plugged in correctly.</p> <p>Left and Right satellite are not connected to correct subwoofer connector.</p>	<p>Connect encounter to known audio source. Test the audio source with headphones.</p> <p>Check right satellite connection. Press into subwoofer firmly.</p> <p>Check satellite connections. Press into subwoofer firmly.</p>
No Bass	Incorrect Bass setting.	Adjust Bass Level with Bass knob on rear of subwoofer.
No Treble	Incorrect Treble setting.	Adjust Treble Level with Bass knob on rear of subwoofer.

This product is intended to be supplied by a Listed Direct Plug-in Power Unit marked Class 2 and Output rated 18 Vac minimum 3.0A.

Free Manuals Download Website

<http://myh66.com>

<http://usermanuals.us>

<http://www.somanuals.com>

<http://www.4manuals.cc>

<http://www.manual-lib.com>

<http://www.404manual.com>

<http://www.luxmanual.com>

<http://aubethermostatmanual.com>

Golf course search by state

<http://golfingnear.com>

Email search by domain

<http://emailbydomain.com>

Auto manuals search

<http://auto.somanuals.com>

TV manuals search

<http://tv.somanuals.com>