

# JBL ON TOUR™ XTB

## BLUETOOTH® PORTABLE LOUDSPEAKER



### USER GUIDE

English.....	2
Deutsch.....	11
Français.....	20
Español.....	29
Italiano.....	38
Nederlands.....	47
한글.....	56
Dansk.....	65
Japanese.....	74
中文.....	83
Русский.....	92
Svenska.....	101
Suomi.....	110



# IMPORTANT SAFETY INSTRUCTIONS

PLEASE READ THE FOLLOWING PRECAUTIONS BEFORE USE:

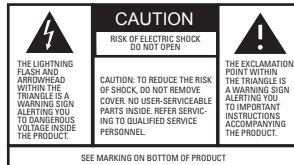
- Read these instructions.
- Keep these instructions.
- Heed all warnings.
- Follow all instructions.
- Do not use this apparatus near water.
- Clean only with dry cloth.
- Do not block any ventilation openings. Install in accordance with the manufacturer's instructions.
- Do not install near any heat sources such as radiators, heat registers, stoves or other apparatus (including amplifiers) that produce heat.
- Do not defeat the safety purpose of the polarized or grounding-type plug. A polarizing plug has two blades with one wider than the other. A grounding-type plug has two blades and a third grounding prong. The wide blade, or third prong, is provided for safety. If the provided plug does not fit into your outlet, consult an electrician for replacement of the obsolete outlet.
- Protect the power cord from being walked on or pinched, particularly at the plugs and convenience receptacles and the point where they exit from the apparatus.
- Only use attachments/accessories specified by the manufacturer.
- Unplug this apparatus during lightning storms or when unused for long periods of time.
- Refer all servicing to qualified service personnel. Servicing is required when the apparatus has been damaged in any way, such as power-supply cord or plug is damaged, liquid has been spilled or objects have fallen into the apparatus, the apparatus has been exposed to rain or moisture, does not operate normally, or has been dropped.
- TO PREVENT THE RISK OF ELECTRIC SHOCK, DO NOT REMOVE THE COVER (OR BACK). THERE ARE NO USER-SERVICEABLE PARTS INSIDE THIS UNIT. PLEASE REFER SERVICING TO QUALIFIED HARMAN CONSUMER GROUP, INC., SERVICE PERSONNEL.
- Never remove grille covers in order to service the speaker system. The speaker system does not contain any user-serviceable parts. Refer all servicing to the Harman Consumer Group, Inc., Technical Support Group.

## FCC/IC STATEMENT AND WARNING

This device complies with Part 15 of the FCC Rules. Operation is subject to the following two conditions:

- 1) This device may not cause interference.
- 2) This device must accept interference, including interference that may cause undesired operation of the device.

MODIFICATIONS NOT EXPRESSLY APPROVED BY THE MANUFACTURER COULD VOID THE USER'S AUTHORITY TO OPERATE THE EQUIPMENT UNDER FCC RULES.



**WARNING:** TO PREVENT FIRE OR ELECTRICAL SHOCK HAZARD, DO NOT EXPOSE THIS PRODUCT TO RAIN OR MOISTURE.

**WARNING:** THE APPARATUS SHOULD NOT BE EXPOSED TO DRIPPING OR SPLASHING, AND NO OBJECTS FILLED WITH LIQUID, SUCH AS VASES, DRINKING GLASSES AND SO FORTH, SHOULD BE PLACED ON THE APPARATUS.

**WARNING:** THE APPARATUS MAY BE STATIC-SENSITIVE IN SOME CIRCUMSTANCES AND MAY HAVE TO BE RESET AFTER SUFFERING AN ELECTROSTATIC DISCHARGE.

**IMPORTANT NOTE FOR ALL ELECTRONIC PRODUCTS:** BEFORE INSERTING OR UNPLUGGING AUDIO CABLES FROM THE SOURCE DEVICE'S HEADPHONES OR LINE-LEVEL OUTPUT JACKS, IT IS GOOD PRACTICE TO TURN OFF THE DEVICE. THIS WILL PROLONG THE LIFE OF YOUR UNIT. HELP PROTECT YOUR DEVICE FROM STATIC ELECTRICITY AND AVOID POTENTIAL DAMAGE.

# JBL ON TOUR™ XTB

## INTRODUCTION

The JBL On Tour™ XTB portable loudspeaker is the latest innovation from JBL, Inc., a longtime leader in the manufacturing of high-end component audio systems. JBL, Inc., audio heritage and continual research have resulted in the unique technologies found in this product.

With no wires to tangle or restrict your movement, and volume and tracking controls conveniently located on the remote control, the JBL On Tour XTB loudspeaker is both the ultimate in portable audio convenience and a paragon of superior audio quality.

A compact, high-performance *Bluetooth*® sound center, the JBL On Tour XTB loudspeaker is controllable by remote control from up to 5.5 meters away. Connected to your *Bluetooth* A2DP-enabled audio device, *Bluetooth* music phone, iPod, MP3 player or any other music source with an audio jack, the JBL On Tour XTB loudspeaker will provide clean, powerful sound in a compact, portable design. Accept a phone call with the included *Bluetooth* speakerphone feature. Take complete control of your traveling experience with the JBL On Tour XTB portable loudspeaker.

## COMPATIBILITY

The JBL On Tour XTB system is compatible with most *Bluetooth*-enabled devices, music players, cell phones and laptops. Enabled with *Bluetooth* A2DP (Advanced Audio Distribution Profile), AVRCP (Audio/Video Remote Control Profile) and HFP (Hands-Free Profile), the system can stream high-quality sound and serve as a speakerphone. With the additional stereo mini jack connection, you can enjoy high-quality audio from a variety of devices such as the iPod shuffle, MP3 and CD players, desktop computers (all platforms), laptops and satellite radio.

## REMOTE

Volume controls – Just a touch increases, decreases or mutes the volume.

Music controls – Manage the playlists on your *Bluetooth* A2DP-enabled device with the Play, Pause, Next Track and Previous Track controls.

Phone call controls – Answer or end a phone call with the simple touch of a button.

## COMPACT DESIGN

The JBL On Tour XTB portable loudspeaker is a complete 2.1-channel audio system in one easy-to-place footprint. The JBL On Tour XTB loudspeaker delivers sound with a powerfully tuned digital audio path. Its clean and compact digital amplification, coupled with DSP (digital signal processing) equalization, efficiently provides radial transducers with cool-running power.

## ADVANCED TECHNOLOGY

The JBL On Tour XTB system combines many proprietary technologies to provide the highest-quality sound. It provides astonishing bass and clear, accurate sound from any direction. The four Odyssey® full-range transducers are driven by powerful neodymium magnets, and Odyssey tweeters provide accurate high frequencies.

## COE (COMPUTER-OPTIMIZED EQUALIZATION)

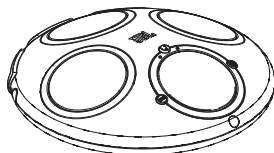
The JBL On Tour XTB system equalization is computer-optimized to provide a rich, complete soundstage.

## OCT (OPTIMIZED COMPRESSION TOPOLOGY)

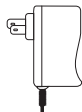
The JBL On Tour XTB loudspeaker utilizes a proprietary compression technology to ensure clean, accurate sound at high output levels.

## UNPACKING

Carefully unpack your speaker system and identify all its components:



JBL On Tour™ XTB unit



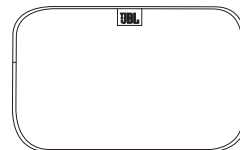
Power supply



Auxiliary audio cable



Remote control

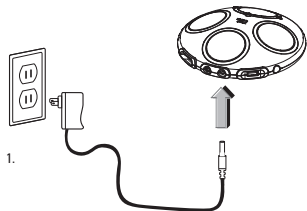


Carry case

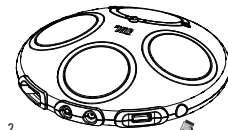
## GENERAL SETUP

Unpack the JBL On Tour XTB system and its power supply.

1. Plug the adapter into the "12V DC-in" port on the back of the unit and then into a wall outlet.
2. Turn on the power switch. The green indicator light will turn on.
3. Remove the remote control battery protector before operating the remote control.



1.



2.

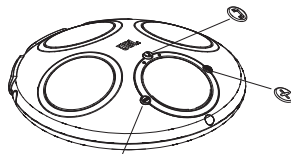
Power switch

## VOLUME CONTROL (ON BASE UNIT)

Volume increase "+"

Volume decrease "-"

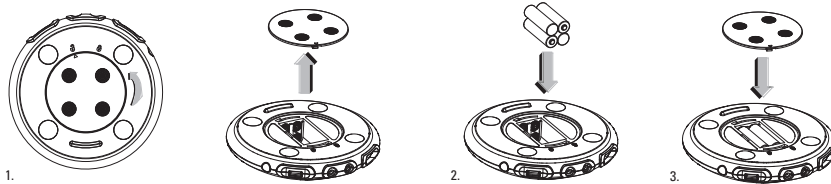
Answer/end phone call (MFB) "j"



## BATTERY INSTALLATION

1. Turn the battery compartment cover on the bottom of the JBL On Tour™ XTB speaker to the unlocked position; remove the battery compartment cover.
2. Place (4) fresh AA batteries as shown.
3. Replace the battery compartment cover.

Note: System will not use battery power when using AC power.



DO NOT MIX BATTERY TYPES.

DO NOT MIX CHARGED AND PARTIALLY CHARGED BATTERIES.

BATTERIES WILL NOT RECHARGE WHILE IN THE UNIT.

## BATTERY DISPOSAL

Alkaline batteries are considered nonhazardous and can be disposed of with your regular household trash.

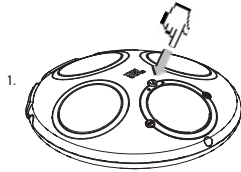
Rechargeable batteries (i.e., nickel cadmium, nickel metal-hydrate, lithium and lithium-ion) are considered hazardous household materials and may pose an unnecessary health and safety risk. Unwanted materials should be disposed of in an environmentally sound manner. Contact your local waste management officials for other information regarding the environmentally sound collection, recycling and disposal of used batteries.

## **BLUETOOTH PAIRING**

Before you can use your JBL On Tour™ XTB system with a *Bluetooth*-enabled product, you must pair it with that product. To pair:

1. Make sure your JBL On Tour XTB system is turned on. The JBL On Tour XTB unit automatically goes into Pairing/Discoverable mode, represented by a constant blue indicator light.
2. Put your *Bluetooth*-enabled device in Pairing mode so the devices can “see” each other. (Refer to the *Bluetooth*-enabled device’s user’s guide for directions and details about putting it into Pairing mode.) The JBL On Tour XTB unit will be represented as “OnTourXTB” on your *Bluetooth*-enabled device. The JBL On Tour XTB password is 8888.
3. The JBL On Tour XTB system is successfully paired and ready to use when the blue indicator light flashes.

Note: *Bluetooth* pairing between two devices does not have to be repeated after a successful initial pairing, unless the JBL On Tour XTB system has been removed from the *Bluetooth*-enabled device’s *Bluetooth* device list.

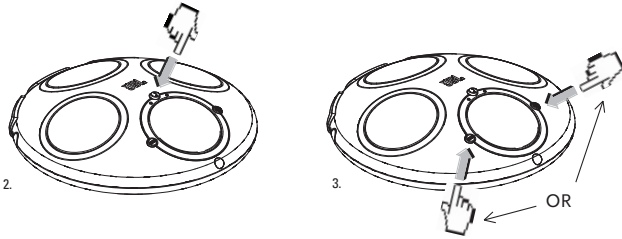


## **LISTENING TO MUSIC FROM A BLUETOOTH-ENABLED DEVICE**

1. Make sure the JBL On Tour XTB system is paired (see *Bluetooth* Pairing section).
2. Go to the *Bluetooth*-enabled device’s music player and play music. Refer to the *Bluetooth*-enabled device’s user’s guide for directions and details about using its music player and transmitting music via *Bluetooth* technology.
3. Use either the *Bluetooth*-enabled device or the JBL On Tour XTB remote control to navigate the music player.

## LISTENING TO A PHONE CALL FROM A BLUETOOTH-ENABLED DEVICE

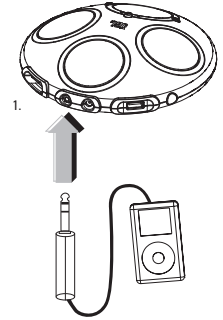
1. Make sure the JBL On Tour™ XTB speaker is paired (see *Bluetooth* Pairing section).
2. When you hear your *Bluetooth*-enabled device's ringtone from the JBL On Tour XTB system, press the MFB "⌂" button to answer the phone call.
3. When the phone call is finished, press the MFB "⌂" button to end the phone call. An incoming phone call can be rejected by pressing and holding the MFB "⌂" button on the JBL On Tour XTB unit for two seconds. To answer a second incoming phone call, press the MFB "⌂" button. To reject a second incoming phone call, press and hold the MFB "⌂" button for three seconds. To mute a phone call, press both Volume buttons on the JBL On Tour XTB system or press the Mute "⊘" button on the remote control. To unmute the phone call, press either the Volume button on the JBL On Tour XTB system or press the Mute "⊘" button on the remote control.



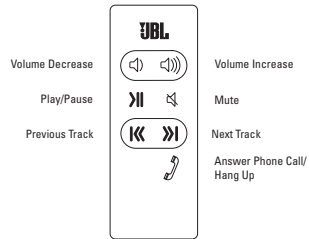
## LISTENING TO MUSIC FROM AN AUXILIARY DEVICE

The JBL On Tour™ XTB system includes a 3.5mm mini jack cable for connection to any analog music player with either a 3.5mm or headphone output.

1. Connect the auxiliary device to the JBL On Tour XTB system using the supplied audio cable.
2. Press the Power button on the rear of the JBL On Tour XTB system. A green LED will indicate that the unit is on.
3. Control music playback through the auxiliary device.
4. Adjust the volume using the “+” and “-” buttons located on the front of the JBL On Tour XTB loudspeaker.



## REMOTE FUNCTIONALITY



## CHARGING

The JBL On Tour XTB system features a USB charge port for charging most mobile phones and most portable music players. Charge cables are not included, so if a USB charge cable was not provided with your mobile phone or portable music player, find out whether one is available from the manufacturer or an authorized dealer. (Mobile phones and portable music players that require data communication in order to charge will not charge from the JBL On Tour XTB system.)



# TECHNICAL SPECIFICATIONS

## JBL ON TOUR™ XT B

Manufacturer	JBL, Inc.
Model	JBL On Tour™ XT B
Drivers (Tweeter)	25mm (1")
Power	2 x 8 Watts at 1% THD
Diameter	165mm (6-1/2")
Height	41mm (1-5/8")
Weight	0.6kg (1.3 lb)
Battery Size	AA
Battery Type	Alkaline, NiMH
Input Impedance	>10k Ohms
Signal-to-Noise Ratio	>85dB
Frequency Response	100Hz – 20kHz
Power (USA/Canada)	120 Volts, 60Hz AC
Power (Europe/UK)	220 – 230 Volts, 50Hz or 60Hz AC
Power (Japan)	100 Volts, 50Hz or 60Hz AC
Power (Australia)	240 Volts, 50Hz or 60Hz AC
Maximum Power Consumption	25 Watts
UL/CUL/CE-Approved	

# TROUBLESHOOTING

## SOUND QUALITY

Symptom	Possible Problem	Solution	Note
There is no sound from your JBL On Tour XT B speaker.	There is no power to the unit.	Make sure the wall power outlet or power strip has power; make sure all switches for the outlet/power strip are on and that all switches for the speaker system are on.	Is the LED on? If the LED is not on, power is not getting to your JBL On Tour XT B system.
	The source selection is incorrect.	Ensure that the auxiliary cable is properly connected to an external audio device.  Turn up the volume.  Check the system with a known good source.  Connect the Aux In cable to the headphone jack on your audio device.	Try the solutions shown.
	The source device is not capable of sending music via <i>Bluetooth</i> technology.	Replace the source device with a <i>Bluetooth</i> wireless technology enabled source device.	
Sound comes from only one side/channel.	The audio cable is not seated properly.	Make sure the Aux In cable is seated all the way into the JBL On Tour XT B system.	If you want to use a longer cable, make sure it's a 3.5mm mini-jack stereo male-to-male cable.
There is distortion (static, crackling or hissing sounds).	The noise may be caused by interference from a monitor, cell phone or other transmitting device.	Turn the monitor or other device off to see whether the noise is eliminated.  Move the JBL On Tour XT B cables farther away from the monitor or other device.	
There is too much bass or treble.	The JBL On Tour XT B system is being overdriven by an amplified audio source.	Ensure that the JBL On Tour XT B system is connected to an appropriate source device.  Make sure that all signal cables are inserted snugly into receptacles.	
	The volume level may be too high.	Check the volume of the source device. Some devices will distort the output signal if the volume is set to maximum.	
	Check the EQ setting on your source device.	JBL, Inc., recommends that the source device EQ be set to Flat or Off.	
Your JBL On Tour XT B speaker emits a loud hum or buzzing noise.	The input cable is not plugged in properly.	Check the input cable connection.	
The speaker experiences radio frequency interference or picks up a radio station.	The input cable may be picking up interference.	Wrap up excess input cable in order to make it as short as possible.	
When streaming music using <i>Bluetooth</i> technology, the sound from the JBL On Tour XT B speaker lacks stereo quality.	There is a <i>Bluetooth</i> compatibility issue between the JBL On Tour XT B unit and the source device.	Ensure that the source device has the latest software.  Turn both the JBL On Tour XT B unit and the source device both off and on to reset them.	Some source devices have known functional issues with the JBL On Tour XT B system.

# TROUBLESHOOTING

## CHARGING

Symptom	Possible Problem	Solution	Note
Your iPod or cell phone will not charge.	The wrong adapter is being used.	Make sure the correct adapter is being used for your specific iPod or cell phone model.	Some cell phones cannot charge via USB without software from the charging system.

## PAIRING

Symptom	Possible Problem	Solution	Note
The audio device does not pair with the JBL On Tour™ XTB system.	The JBL On Tour XTB system is being overdriven by an amplified audio source.	The audio device is not compatible. Verify with the manufacturer.	The blue LED should be constantly on, indicating that the system is in the Discoverable mode.
	The JBL On Tour XTB system is not powered on.	Press down on the Power button.	
	The JBL On Tour XTB system is still connected to another <i>Bluetooth</i> source device.	Disconnect the connected <i>Bluetooth</i> audio device and turn the JBL On Tour XTB system power off, then back on.	
The battery in the <i>Bluetooth</i> audio source device or JBL On Tour XTB unit is low.		Recharge or replace the battery in the <i>Bluetooth</i> audio source device and/or replace the batteries in the JBL On Tour XTB unit.	If the amber LED on the JBL On Tour XTB unit is on, it is indicating a low battery.

JBL and Odyssey are trademarks of Harman International Industries, Incorporated, registered in the United States and/or other countries. JBL On Tour is a trademark of Harman International Industries, Incorporated.

The *Bluetooth* word mark and logo are registered trademarks owned by the Bluetooth SIG, Inc., and any use of such marks by Harman International Industries, Incorporated, is under license. Other trademarks and trade names are those of their respective owners.

Nokia and Nokia XpressMusic are trademarks or registered trademarks of Nokia Corporation.

iPod is a trademark of Apple Inc., registered in the U.S. and other countries. Shuffle is a trademark of Apple Inc.

JBL et Odyssey sont des marques commerciales de Harman International Industries, Incorporated, déposées aux États-Unis et/ou dans d'autres pays. JBL On Tour est une marque commerciale de Harman International Industries, Incorporated.

Le nom et le logo *Bluetooth* sont des marques déposées appartenant au Bluetooth SIG, Inc., et toute utilisation de ces marques par Harman International Industries, Incorporated, fait l'objet d'une licence. Les autres marques commerciales et noms de commerce appartiennent à leurs propriétaires respectifs.

Nokia et Nokia XpressMusic sont des marques commerciales ou marques déposées de Nokia Corporation.

iPod est une marque commerciale de Apple Inc., déposée aux États-Unis et dans d'autres pays. Shuffle est une marque commerciale de Apple Inc.

**Harman Consumer Group, Inc.**

8500 Balboa Boulevard, Northridge, CA 91329 USA

516.255.4525 (USA only)

[www.jbl.com](http://www.jbl.com)

© 2008 Harman International Industries, Incorporated. All rights reserved. Tous droits réservés.

Document Number: 950-0224-001 Rev. E

**H** A Harman International Company



## Free Manuals Download Website

<http://myh66.com>

<http://usermanuals.us>

<http://www.somanuals.com>

<http://www.4manuals.cc>

<http://www.manual-lib.com>

<http://www.404manual.com>

<http://www.luxmanual.com>

<http://aubethermostatmanual.com>

Golf course search by state

<http://golfingnear.com>

Email search by domain

<http://emailbydomain.com>

Auto manuals search

<http://auto.somanuals.com>

TV manuals search

<http://tv.somanuals.com>