

HO97916



USB 2.0 7-Port Hub

INSTRUCTION MANUAL



www.jascopeproducts.com

Table of Contents

I. INTRODUCTION	3
II. OVERVIEW	4
III. SAFETY INSTRUCTIONS	5
IV. POWER MODE SETTING	6
V. HUB STAND ASSEMBLY	7
VI. HARDWARE INSTALLATION	13
VII. SOFTWARE INSTALLATION	15
VIII. TROUBLESHOOTING	16
IX. TECHNICAL SPECIFICATIONS	17
X. FCC COMPLIANCE STATEMENT	18
XI. WARRANTY	19

I. Introduction

Please read this entire manual carefully before using your new USB 2.0 7-Port Hub and follow the instructions to prevent damage to the USB 2.0 7-Port Hub and/or the connecting devices.

THIS PACKAGE INCLUDES:

- USB 2.0 7-Port Hub
- USB 2.0 Device Cable (6 feet)
- AC/DC Power Adapter
- User's Manual
- Two Magnets
- Two metal magnet holders
- Two ¼" screws

II. Overview

This USB 2.0 7-Port Hub allows you to connect up to seven USB devices to a single USB port on your computer, including up to five high-powered devices, simultaneously. This device complies with USB 2.0 specifications and supports data speeds up to 480 Mbps. It is compatible with all USB 1.1 and 2.0 devices. You can stack multiple hubs together to support up to 127 devices through a single USB port on your computer.

FEATURES

- USB 1.1 and 2.0 compatible
- Stackable and Mountable via magnets or screws
- Connect up to 5 high powered devices at once
- 1 LED to indicate power
- 7 LEDS to indicate individual port activity
- Plug and Play
- Bus fault detection and recovery
- Per port over-current detection and protection
- Self-power mode used

III. Safety Instructions

Always read the Safety Instructions carefully.

- Keep this user's manual for future reference.
- Keep this equipment away from humidity.
- Lay this equipment on a reliable flat surface before setting it up.
- If any of the following situations arises, get the equipment checked by a service technician:
 - The equipment has been exposed to moisture.
 - The equipment has been dropped and damaged.
 - The equipment has obvious sign of breakage.
 - The equipment is not working well.
 - If you cannot get it to work according to this User's Manual refer to the Warranty in Section XI.

IV. Power Mode Setting

There are two power mode options for the USB 2.0 7-Port Hub.

The first is self-power mode (recommended), which requires the use of the AC power adapter. In this mode, a maximum of five (5) high-powered USB devices may be connected to the hub at one time. If more than five high-powered devices are connected, you will notice a decrease in performance. (An additional hub is considered a high-powered device.)

The second is bus-power mode, which does NOT require the use of the AC power adapter. In this mode, the hub is provided with 500 milliamps for all 7 ports. This should be adequate for mice, keyboards, and other low power devices. If you are not sure or if device performance is poor, use the AC adapter.

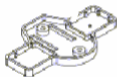
When using the AC power adapter, make sure the plug is properly connected to a standard electrical outlet. Surge protection is recommended.

V. Hub Stand Assembly

Options:

- Stand may be mounted Magnetically or with Screws
- Hub may be oriented vertically or horizontally
- Hubs may be stacked

Contents:



Stand



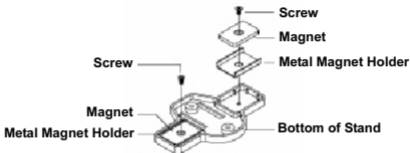
Magnets



1/4" Screws

Note: Package does not include the two screws needed to mount the hub to your desk. If you choose this mounting method, you will need to purchase the two screws separately.

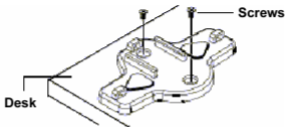
A. Attach Hub Stand with Magnets



1. Place the metal magnet holder, and magnet on the stand as shown in the diagram.
2. Using the included screws, fasten the magnet to the stand as shown in the diagram.
3. Follow the directions in Sections C & D to attach the hub to the stand.
4. Attach the stand with the hub to your desk, or other flat metal location.

Note: To eliminate data loss, do not place disks near the magnets.

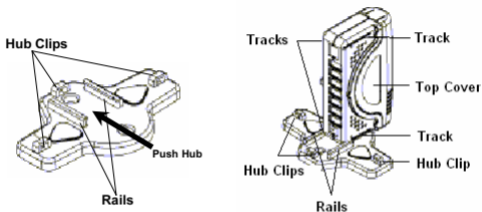
B. Attach Hub Stand with Screws



1. You will need to purchase two screws separately. These are not provided.
2. Place the stand where you would like it secured to your desk.
3. Fasten the screws in the screw holes on both sides of the stand.
4. Attach the hub as described in Sections C & D.

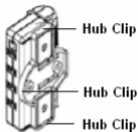
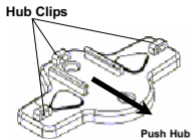
Note: You will need to purchase the two screws separately. These are not provided.

C. Attach Hub to Stand Vertically



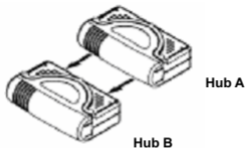
1. Line up the tracks of either side of the hub with the rails on the stand.
2. Slide the hub all the way back on the stand until you hear a click.

D. Attach Hub to Stand Horizontally



1. Line up the hooks on the bottom of the hub with the hub clips on the stand.
2. Slide the hub onto the stand until you hear a click.

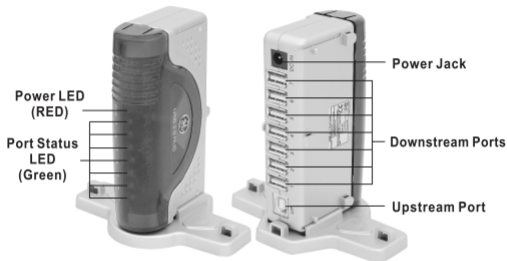
E. Stacking Hubs



1. Face the Hubs in the same direction
2. Line up the hooks on the bottom of Hub A with the top cover of Hub B.
3. Slide Hub A onto Hub B as shown in the diagram.

VI. Hardware Installation

1. Make sure your computer has all the necessary updates required to support USB 2.0. These can be found on Microsoft's website.



2. Position the Hub as desired using the directions in Section VI.

3. Plug the included AC power adapter into the Power Jack on the rear of the USB 2.0 7-Port hub.
4. Plug the AC power adapter into a standard electrical outlet or surge protector. The power LED should illuminate.
(Note: Refer to Section IV for more details. It is recommended that you use the power adapter initially. After you verify that all of the devices plugged into the hub are working, you may remove the AC power adapter. If any device ceases to function properly, you will need to use the AC power adapter.)
5. Plug the B-type connector of the included USB 2.0 device cable into the Upstream Port on the rear of the USB 2.0 7-Port Hub.
6. Plug the A-type connector of the included USB 2.0 device cable into the USB port of your computer or into another USB hub.
7. Connect your USB devices to any of the 7 available Downstream Ports. If properly connected, the corresponding green Port Status LED should illuminate.

Note: If you connect the hub to a USB 1.1 Port, your computer may warn you that a high-speed device has been connected to a non-high speed port. Your hub will function properly, however it will function at the USB 1.1 speed of your USB port.

VII. Software Installation

Software installation is only required for Windows® 98 and 98 SE users. Users of all other Operating Systems, including Windows® NT, ME, 2000, XP and Mac®, may skip this section.

- 1) When your hub is connected to your computer, Windows® 98 and 98 SE will detect the hub and automatically run the “Add New Hardware Wizard”.
- 2) When the initial screen appears introducing the “Add New Hardware Wizard”, click **Next**.
- 3) Select “Search for the best driver for your device (Recommended):” and click **Next**.
- 4) When asked to select a location to search for the drivers, use the default selection. Do not change the location. Click **Next**.
- 5) Click **Next** to accept the location the driver will be installed in. On the final screen notifying you that the driver has been installed, click **Finish**.

VIII. Troubleshooting

- **Hub Not Seen**

Make sure you have installed all Windows® updates and patches pertaining to USB. These are available on Microsoft's website.

- **Hub Not Seen on a laptop**

USB 2.0 Hubs may not work on all laptops. Try the hub on a desktop computer to confirm functionality of the hub. If this works, contact your computer dealer.

Hub Not Seen on Windows® 98 or 98 SE

If you plugged the camera in prior to installing the software with Windows® 98 or 98 SE, your computer needs to be shown where the USB driver is. Please contact customer service.

IX. Technical Specifications

USB Hub:	7 Ports
Standards:	USB 1.1 and 2.0 Compatible
Operating Systems:	Windows 98 SE, ME, 2000, XP or later Mac OS 9.X and above
Data Speed:	High: 480 Mbps Full: 12 Mbps Low: 1.5 Mbps
Upstream Ports:	Series A plug x 1
Downstream Ports:	Series A receptacle port x 7
LEDs:	1 Power Indicator, 7 Port Activity Indicators
Power:	Self-Power (AC Adapter): 5 Volts, 2.5 Amps Bus Power (No Adapter): 500 milliamps *A maximum of 5 high-powered devices may be used at one time with the AC adapter *A maximum of 1 high-powered device may be used without the AC power adapter
Storage Temperature:	-10°C ~ 40°C
Working Temperature:	0°C ~ 40°C
Compliance:	FCC regulations for home or office use

X. FCC Compliance Statement

This equipment has been tested and found to comply with the limits for a Class B digital device, pursuant to Part 15 of the FCC Rules. These limits are designed to provide reasonable protection against harmful interference in a residential installation. This equipment generates, uses and can radiate radio frequency energy and, if not installed or used in accordance with the instructions, may cause harmful interference to radio communications. However, there is no guarantee that interference will not occur in television reception, which can be determined by turning the equipment off and on, the user is encouraged to try and correct the interference by one or more of the following measures:

- (1) Reorient or relocate the receiving antenna.
- (2) Increase the separation between the equipment and the receiver.
- (3) Connect the equipment into an outlet on a circuit different from that to which the receiver is connected.
- (4) Consult the dealer or an experienced radio/TV technician for help.

FCC WARNING:

Changes or modifications not expressly approved by the party responsible for compliance could void the user's authority to operate the equipment.

XI. Warranty

Jasco Products Company warrants this product to be free from manufacturing defects for a period of two years from the original date of consumer purchase. This warranty is limited to the repair or replacement of this product only and does not extend to consequential or incidental damage to other products that may be used with this unit. This warranty is in lieu of all other warranties express or implied. Some states do not allow limitations on how long an implied warranty lasts or permit the exclusion or limitation of incidental or consequential damages, so the above limitations may not apply to you. This warranty gives you specific rights, and you may also have other rights which vary from state to state. If unit should prove defective within the warranty period, return prepaid with dated proof of purchase to:

Jasco Products Company
311 N.W. 122nd St
Oklahoma City, OK 73114

Distributed for THOMSON INC.
by Jasco Products Company,
311 N.W. 122nd Street, Oklahoma City, Oklahoma 73114
www.jascoproducts.com

Free Manuals Download Website

<http://myh66.com>

<http://usermanuals.us>

<http://www.somanuals.com>

<http://www.4manuals.cc>

<http://www.manual-lib.com>

<http://www.404manual.com>

<http://www.luxmanual.com>

<http://aubethermostatmanual.com>

Golf course search by state

<http://golfingnear.com>

Email search by domain

<http://emailbydomain.com>

Auto manuals search

<http://auto.somanuals.com>

TV manuals search

<http://tv.somanuals.com>