

Stealthbox®

INSTALLATION GUIDE for the

SB-F-MUCUPE2/13W3v3
SKU#94465
2010+



Thank you for choosing a JL Audio Stealthbox® for your automotive sound system. With proper installation, your new vehicle-specific enclosed subwoofer system will deliver years of listening pleasure.

We strongly recommend that you have your new Stealthbox® installed by your authorized JL Audio dealer. The installation professionals employed by your dealer have the necessary tools and experience to disassemble and reassemble your vehicle properly. Also, keep in mind that your warranty coverage extends to 2 years if your system is installed or approved by your authorized JL Audio dealer. If you prefer to perform your own installation, please read this installation guide completely before beginning the process.

JL AUDIO®
Ahead of the Curve™

! IMPORTANT

If you choose to perform the installation yourself, it is absolutely vital that the Stealthbox® be properly mounted to the vehicle according to these instructions. Failure to mount the enclosure properly presents two problems:

- 1) The sub-bass performance will suffer due to the movement of the enclosure caused by the force exerted by the woofer(s).
- 2) A loose enclosure presents a serious safety hazard in the event of a collision or sudden deceleration.

INSTALLATION DIFFICULTY:

2 OUT
OF
5

**ESTIMATED TIME:
1 HOUR**



STEP 1

Empty out the trunk of the car so that you have a clean area to work in.



STEP 2

Remove the trunk floor covering.

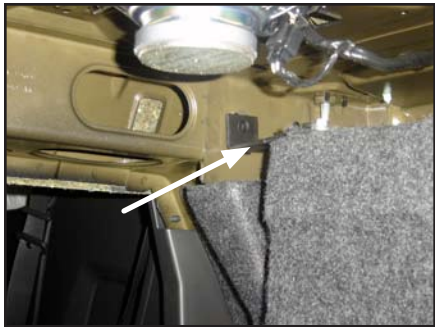


STEP 3

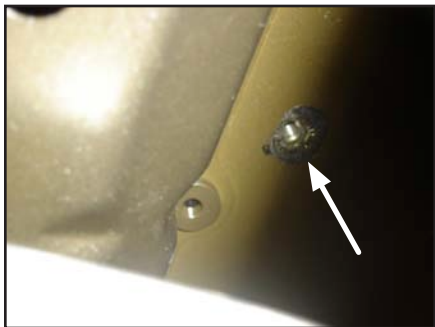
Remove the rubber body grommet towards the back of the floor as indicated.

**STEP 4**

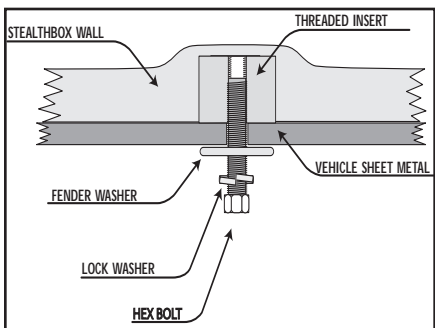
Set the enclosure into the trunk on the passenger side of the car, familiarize yourself with the location of the threaded insert at the front top of the enclosure. Rotate the enclosure into place.

**STEP 5**

Once the enclosure has been rotated into place, fasten the included Custom Bracket using the Hex Head Bolt, Split Lock Washer and Fender Washer as shown on enclosure.

**STEP 6**

From under the vehicle, start the Hex Head Bolt, Split Lock Washer and Fender Washer (see DETAIL Below) into the threaded insert in the bottom of the Stealthbox®. **DO NOT TIGHTEN AT THIS TIME!**

**DETAIL****STEP 7**

Push the enclosure back into the side until it is snug in place, Mark the spot where the bracket lines up with seat brace structure, drill a 1/2" hole.

Before drilling, always make sure that you are not going to be drilling into any gas lines, brake lines, tires, transmission lines, electrical wiring, exhaust systems or anything else that might cause a reduction in your weekly pay.

Always wear eye protection when drilling!

**STEP 8**

Install hardware as shown through the Bracket and the hole drilled in **Step 7**.

**STEP 9**

Tighten the hardware installed in **Step 8** and the hardware from below the car installed in **Step 6**. Re-install floor covering, you may need to fold it where the Stealthbox® now sits.

**STEP 10****CONGRATULATIONS!**

You have completed the installation for this model!

Enjoy your new Stealthbox®!

Please refer to the Power Recommendation section for an amplifier recommendation and basic set-up help.

INCLUDED HARDWARE

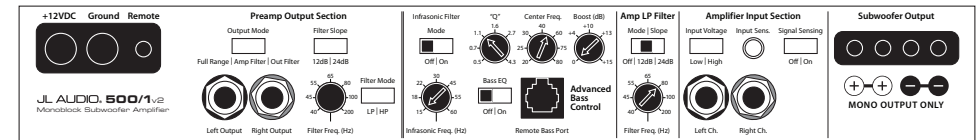
- 3) 3/8-16x1-1/4" Hex Head Bolt 3) 3/8x1-1/4" Fender Washer
 3) 3/8" Split Lock Washer 1) Custom Bracket
 1) 3/8x16 Locking Nut

SPECIFICATIONS

Enclosure Type: Acoustic Suspension (sealed)
Driver Type: 13W3v3-4
Nominal Impedance: 4 ohms
Continuous Power Handling: 600 watts

POWER RECOMMENDATION

JL Audio recommends high quality amplifiers such as the JL Audio HD900/5, 500/1v2 or J2 500.1. The diagram below shows the recommended crossover, infrasonic filter and equalizer settings for the 500/1v2. If another amplifier is being used, please reference this illustration and use similar settings on that amplifier.



All JL Audio amplifiers are very versatile audio components. Please consult the owner's manual for even more detailed information about installing and tuning your amplifier.

CONNECTIONS

Using quality power, signal and speaker wire is essential in ensuring the performance of your Stealthbox®. JL Audio recommends using a 4 AWG power kit such as the XC-PCS4-1B for your Stealthbox® amplifier, other kits are available should you be using more than one amplifier. Signal wire such as the JL Audio Premium Audio Interconnect Cables should be used that will provide signal for both channels of the amplifier. JL Audio recommends using 12AWG speaker wire for subwoofers such as our XC-BCS12-25.

MID/HIGH FREQUENCY DRIVER FITMENT

A variety of JL Audio coaxial and component systems will fit in the factory speaker locations of your vehicle.

Front Speaker Size / Location: 5"x 7" / 6"x 8" - Front Doors
Fits JL Audio Models: TR570-CXi, C2-570x, C3-570, C5-570, C5-570x & ZR570-CSi

Rear Speaker Size / Location: 5"x 7" / 6"x 8" - Rear Door
Fits JL Audio Models: TR570-CXi, C2-570x, C3-570, C5-570, C5-570x & ZR570-CSi



JL AUDIO®

Ahead of the Curve™

(954) 443-1100

www.jlaudio.com

All specifications are subject to change without notice. "JL Audio" and the JL Audio logo, "Stealthbox" and the Stealthbox logo are registered trademarks of JL Audio, Inc. "Ahead of the Curve" and its respective logo is a trademark of JL Audio, Inc.
 JLA-SKU# 011004 10.09.2009 • Printed in USA • ©2008 JL Audio, Inc. • U.S. PATENTS: #5,734,734 #5,949,898 #6,118,884 #6,229,902 #6,243,479 #6,294,959 #6,501,844 #6,496,590 #6,441,685 #5,687,247 #6,219,431 #6,625,292 #D472,891 #D480,709 Other U.S. & Foreign patents pending.
 For more detailed information please visit us online at www.jlaudio.com.



Free Manuals Download Website

<http://myh66.com>

<http://usermanuals.us>

<http://www.somanuals.com>

<http://www.4manuals.cc>

<http://www.manual-lib.com>

<http://www.404manual.com>

<http://www.luxmanual.com>

<http://aubethermostatmanual.com>

Golf course search by state

<http://golfingnear.com>

Email search by domain

<http://emailbydomain.com>

Auto manuals search

<http://auto.somanuals.com>

TV manuals search

<http://tv.somanuals.com>