

Stealthbox®

INSTALLATION GUIDE for the SB-GM-CLRDO/10W3v3 (2004-Up Chevrolet Colorado & GMC Canyon Crew Cab)



This Stealthbox is a product which requires professional installation skills and tools.

Please read this installation guide thoroughly before beginning the project. It will guide you step by step through the installation. Several of the steps in this process may require two people to accomplish.

It is absolutely vital that the enclosure be properly mounted to the vehicle according to these instructions. Failure to mount the enclosure properly presents two problems: 1) The sub-bass performance will suffer due to the movement of the enclosure caused by the force exerted by the woofer(s) and 2) A loose enclosure presents a serious safety hazard in the event of a collision or sudden deceleration.

Please enjoy your JL Audio Stealthbox responsibly.

JL AUDIO®

Ahead of the Curve™

www.jlaudio.com

START
HERE



STEP 1: With an 18mm deep socket, remove the two front mounting nuts. Also remove the jack out of the metal holder.



STEP 2: There are two rear mounting nuts that need to be removed. With a long extension and the 18mm deep socket. Remove the rear mounting nuts.



STEP 3: With the rear mounting nuts removed, tilt the rear seat forward, off the mounting studs.



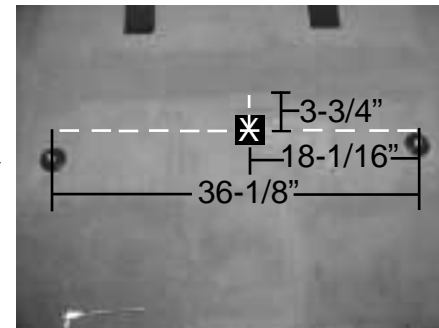
STEP 4: With the rear seat tilted forward, locate the middle passenger's shoulder safety belt. Follow the belt down to the latch. With a flat blade screw driver, push the red button. This will disengage the shoulder belt. Pull the belt through the crease of the seat and up to the return pocket, located on the back wall.



STEP 5: Remove the rear seat out of the vehicle. You should use a second person to help out.

Also remove the metal jack holder.

*At this time run speaker wire from the amplifier area to the Stealthbox area. Double check the woofer for proper working order. *



STEP 6: Place the middle of the supplied wax square, in the middle of the mounting studs and 3-3/4" from the point of the floor as it starts to elevate up. Remember to remove the paper backing.

If the Stealthbox is mounted to far to the rear, the rear seat will not fit. If the Stealthbox is mounted to far forward, it will hit the front center console.

Continued on Next Page →

CAUTION

Before drilling, make sure that you are not going to be drilling into any gas lines, brake lines, transmission lines, electrical wiring, transfer case(4x4 vehicles) or anything else that might cause a reduction in your weekly pay. Always wear eye protection when drilling.

With the use of a 1/2" drill bit and drill. Drill out the floor at the impression on the wax square.

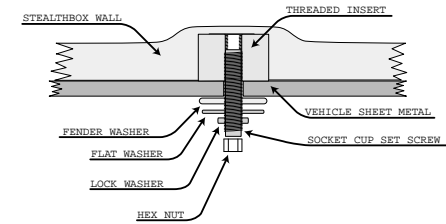
After the hole is drilled, remove the wax square



STEP 7: (A) Thread the supplied socket cup screw into the Stealthbox. Leave 1/2" exposed.

(B) Place the Stealthbox into position and line up the curved corners of the Stealthbox, that are between the woofer and the square shape of the Stealthbox. These corners need to line up with the curvature of the transmission hump floor as it goes to the rear and jets to the right and left of the truck. Once into place, push down with force.

(C) With a 1/2" drill bit, drill at the impression that was left by the Stealthbox in **STEP 6**.



STEP 8: With the drilled out hole in the floor. Expose the socket cup set screw 2" out of the Stealthbox. Place the Stealthbox into position and guide the socket cup set screw through the drilled hole.

From under the vehicle, place the supplied fender washer, flat washer, lock washer and hex nut onto the socket cup screw.



STEP 9: Place the jack back into the holder and then place the jack assembly to the floor (same area it was removed from) with the yellow knob facing the passenger's side rear door. With one factory mounting bolt. Secure the assembly with to the driver's side mounting threads. Use the second factory mounting bolt to plug up the passenger's side mounting threads.



STEP 10: With a second person, place the rear seat back into position. Wrap the shoulder belt in front of the seat and through bottom crease of the seat.

Cont.
From
Previous
Page



Cont. From Previous Page



STEP 11: With the shoulder belt through the bottom crease. Snap the belt back into the latch.



STEP 12: Flip the rear seat back into the up-right position.

**CONGRATULATIONS!
INSTALL COMPLETE.**

- Included Hardware:**
- (1) Wax Square
 - (1) 2-14" Socket Cup Set Screw
 - (1) Fender Washer
 - (1) Flat Washer
 - (1) Lock Washer
 - (1) Hex Nut

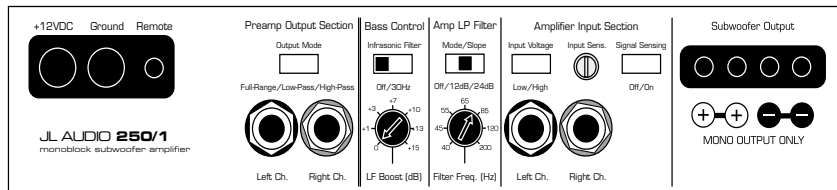
Difficulty Of Installation:



Specifications:

- Enclosure Type:** Sealed
- Driver Type:** 10W3v3-4
- Nominal Impedance:** 4Ω
- Cont. Power Handling:** 300Watts

JL Audio recommends using a high quality amplifier such as the JL Audio 250/1. The diagram below shows the recommended crossover, infrasonic filter and equalizer settings for the 250/1 when being used to power your Stealthbox®.



The JL Audio 250/1 is a very versatile audio component. Please consult the owner's manual for detailed information about installing and tuning this amplifier.

Mid/High Frequency Driver Information:

Front Location Driver Size:
6.5" separates

Applicable JL Audio Products:
VR, XR, VR & TR 650-CXi
*with 1/2" spacer

Rear Location Driver Size:
6.5"

Applicable JL Audio Products:
XR, VR & TR 650-CXi
*with 1.0" spacer



Free Manuals Download Website

<http://myh66.com>

<http://usermanuals.us>

<http://www.somanuals.com>

<http://www.4manuals.cc>

<http://www.manual-lib.com>

<http://www.404manual.com>

<http://www.luxmanual.com>

<http://aubethermostatmanual.com>

Golf course search by state

<http://golfingnear.com>

Email search by domain

<http://emailbydomain.com>

Auto manuals search

<http://auto.somanuals.com>

TV manuals search

<http://tv.somanuals.com>