

# Stealthbox®

## INSTALLATION GUIDE for the

SB-P-CYNNE/10W6v2/BK  
2003 - 2006 Porsche Cayenne



*Thank you for choosing a JL Audio Stealthbox® for your automotive sound system. With proper installation, your new vehicle-specific enclosed subwoofer system will deliver years of listening pleasure.*

*We strongly recommend that you have your new Stealthbox® installed by your authorized JL Audio dealer. The installation professionals employed by your dealer have the necessary tools and experience to disassemble and reassemble your vehicle properly. Also, keep in mind that your warranty coverage extends to 1 year if your system is installed or approved by your authorized JL Audio dealer. If you prefer to perform your own installation, please read this installation guide completely before beginning the process.*

**JL AUDIO®**  
Ahead of the Curve™

### ! IMPORTANT

If you choose to perform the installation yourself, it is absolutely vital that the Stealthbox® be properly mounted to the vehicle according to these instructions. Failure to mount the enclosure properly presents two problems:

- 1) The sub-bass performance will suffer due to the movement of the enclosure caused by the force exerted by the woofer(s).
- 2) A loose enclosure presents a serious safety hazard in the event of a collision or sudden deceleration.

### INSTALLATION DIFFICULTY:

**3** OUT  
OF  
**5**

**ESTIMATED TIME:  
2-3 HOURS**



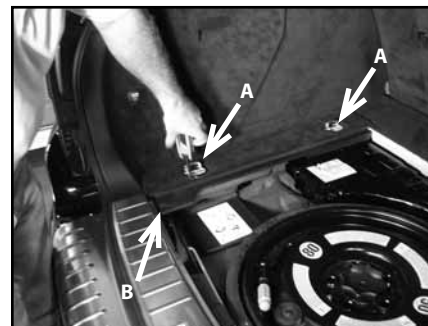
#### STEP 1

Remove any contents from the cargo area.



#### STEP 2

Remove the flooring.



#### STEP 3

With a T-30 wrench or socket, remove the pair of hold down cleats(A).

With an 10mm socket, remove the bolt(B) that secures the side panel to the vehicle.



**STEP 4**  
Remove the bottom sill plate.



**STEP 5**  
Remove the lower d-pillar trim.



**STEP 6**  
Remove the top sill plate.



**STEP 7**  
Remove the plastic cover from the upper d-pillar trim.  
Remove the phillip head screw that has been exposed .



**STEP 8**  
Remove the upper d-pillar trim.



**STEP 9**  
With a T-30 socket, remove the bolt and metal bracket that is located between the two rear seats.



**STEP 10**  
Grab a hold of the back of the driver's side rear seat as in the picture.  
Lift the right side of the seat up and out of the hinge bracket.  
Pull the left side of the seat towards the middle of the vehicle, sliding the seat off of a hinge pin.  
Once the seat is off both hinge points, remove the seat from the vehicle.



**STEP 11**  
Flip the driver's side rear bottom cushion towards the front of the vehicle.



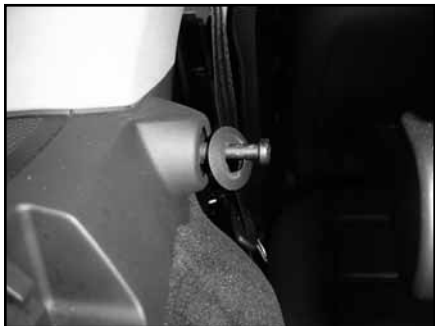
**STEP 12**  
Remove the plastic collar that is around the hinge pin.



**STEP 13**  
Remove the trim panel.



**STEP 14**  
With a 17mm socket and ratchet, remove the seat belt retracting unit.



**STEP 15**  
Remove the plastic ring from the rear seat's upper latch pin.



**STEP 16**  
Pull the SRS plastic badge from the upper c-pillar trim.  
With a T-25 socket, remove the bolt that has been exposed.



**STEP 17**  
An airbag is located behind the c-pillar trim. Use caution while removing this panel. All wiring/connections should be protected.  
As in the illustration, reach around to the rear of the c-pillar trim and carefully remove the c-pillar trim from the c-pillar, by pulling towards you.



**STEP 18**  
With a T-25 socket remove the bolt that secures the front of the side trim panel to the c-pillar.



**STEP 19**  
From the driver's side rear door opening. Pull the front of the cargo side trim panel from the vehicle's body. Do not fully remove this side trim panel at this time.

**STEP 20**

With a T-25 socket, remove three bolts that secure this rear side trim panel.

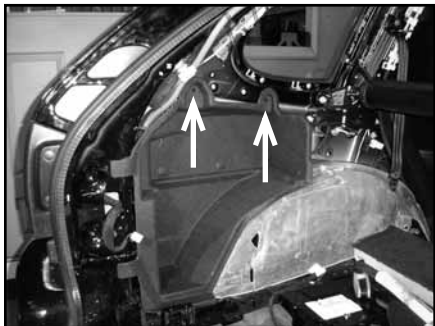
**STEP 21**

Pull the rest of the side trim panel from the body of the vehicle.

Once the side trim panel is loose, disconnect the power outlet 12V plug from the wire harness.

**STEP 22**

Pull the side trim panel out of vehicle.

**STEP 23**

With a T-30 socket, remove the bolts that secure the pocket to the body of the vehicle.

**STEP 24**

Found in the rearmost driver's side floor corner, remove the rubber grommet in the cargo area.

Unsecure the wire harness from the wheel well.

**\*Make sure the ignition is not turned on\***

Loosen the bolt that secures the brown wires to the flooring of the vehicle.

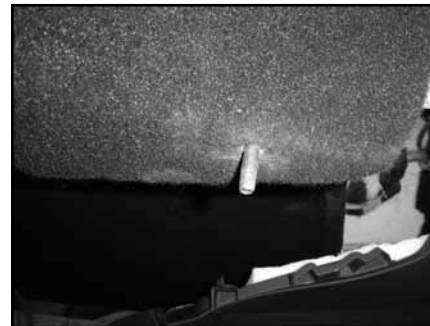
Once loose, turn this wire assembly counter clockwise until the wires are routed as illustrated in the picture. Secure the bolt.

**STEP 25**

Place the supplied top mount plate into position. The plate will only fit one way. The hole in the mounting plate will line up with the access hole from the removed grommet.

**STEP 26**

Run speaker wire from the amplifier's location to the Stealthbox® location and check for proper operation of the woofer.

**STEP 27**

Thread in one of the supplied socket cup set screws into the bottom of the Stealthbox®, leaving 1-inch exposed.

**STEP 28**

Fully thread the supplied coupler to the first socket cup set screw from STEP 27.

Thread the second supplied socket cup set screw into the coupler.

**STEP 29**

Place the Stealthbox® into position by guiding the socket cup set screw assembly through the hole in the top mounting plate installed in STEP 25.

The bottom of the Stealthbox® will not touch the mounting plate. The coupler will be touching the mounting plate.

**STEP 30**

Once the Stealthbox® is in position, place the supplied piece of black carpeting between the Stealthbox® and the rear side of the wheel well. You need to cover the corner of the wheel well just in front of the Stealthbox®.

**STEP 31**

Place a supplied 3/8-inch lock washer and then a supplied flat washer onto the supplied 3/8-inch bolts.

Place two of these mounting bolt assemblies through the supplied L-bracket. The L-bracket can only be positioned one way. Line up the mounting holes of the L-bracket to the threaded inserts of the Stealthbox®.

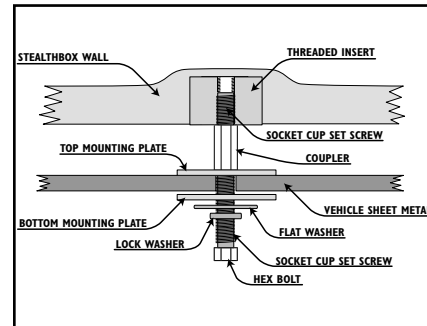
Place the L-bracket into the mounting position and guide the bolt assemblies through the two holes in the metal lip, as seen in the picture to the left.

Place a supplied flat washer and supplied hex nut onto each protruding bolt, behind the metal lip.

With an 9/16-inch box end wrench holding the nuts, use a 9/16-inch socket to secure the L-bracket to the metal lip.

**STEP 32**

With a 9/16-inch socket and the remaining supplied pair of bolt assemblies, secure the L-bracket to the Stealthbox®.

**STEP 33**

From under the vehicle, place the supplied mounting plate, flat washers, lock washers and then hex nut onto the protruding socket cup set screw. Using an 9/16-inch socket, secure this bottom mounting assembly.

Note: For added protection, it is recommended that you apply a bead of silicone between the vehicle and the mounting plate. After the bolt assembly is tightly secured, it is also recommended that vehicle under-coating material is applied to the exposed assembly.

**STEP 34**

Place the factory side trim panel, removed in STEP 22, back into place.

**STEP 35**

Reconnect the power outlet 12V plug to the wire harness, unplugged in STEP 22.

**STEP 36**

With a T-25 socket, secure the rear of the side trim panel to the d-pillar, from STEP 20.

**STEP 37**

With a T-25 socket, secure the front of the side trim panel to the c-pillar, from STEP 18.

**STEP 38**

With a 17mm socket, secure the seat belt retracting unit, from STEP 14.

**STEP 39**

Replace the trim and the plastic collar that goes around the hinge pin, from STEP 12 & 13.

**STEP 40**

With a T-25 socket, secure the top c-pillar trim to the c-pillar, from STEPS 16 & 17.

**STEP 41**

Secure the upper d-pillar trim to the d-pillar, secure the trim with the mounting screw that was removed and replace the plastic cover, from STEPS 7 & 8.

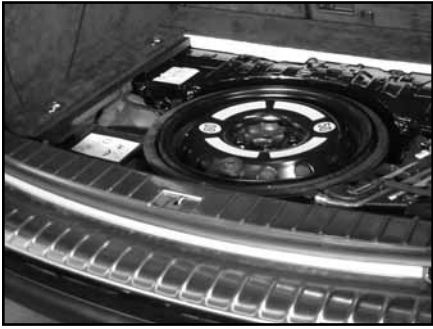
**STEP 42**

Replace the top sill plate, from STEP 6.

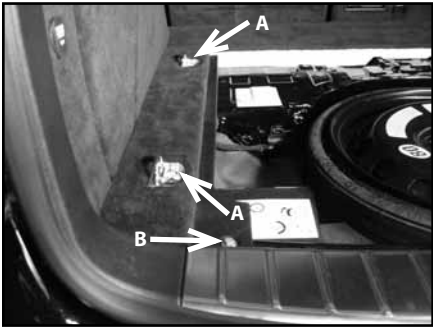
**STEP 43**

Replace the lower d-pillar trim, from STEP 5.



**STEP 44**

Replace the cargo door sill plate, from STEP 4.

**STEP 45**

With a T-30 wrench or socket, mount the pair of hold down cleats(A), from STEP 3.

With a 9mm socket, mount the bolt(B) that secures the side panel to the vehicle, from STEP 3.

**STEP 46**

Replace the rear seat removed in STEP 9 & 10.

**STEP 47**

Replace the flooring and any contents, from STEP 1 & 2.

**CONGRATULATIONS**

You have completed the installation for this model!

Please refer to the Power Recommendation section for an amplifier recommendation and basic set-up help.

**INCLUDED HARDWARE**

- |   |   |
|---|---|
| (2) 3/8-inch -16 x 2 1/4-inch Socket Cup Set Screws | (7) 3/8-inch Flat Washer                |
| (1) 3/8-inch -16 Socket Cup Set Screw Coupler       | (5) 3/8-inch Lock Washer                |
| (1) Aluminum Top Mounting Plate                     | (4) 3/8-inch -16 x 1 1/4-inch Hex Bolts |
| (1) Aluminum Bottom Mounting Plate                  | (3) 3/8-inch -16 Hex Nuts               |

**SPECIFICATIONS**

**Enclosure Type:** Acoustic Suspension (sealed)

**Driver Type:** 10W6v2-D4

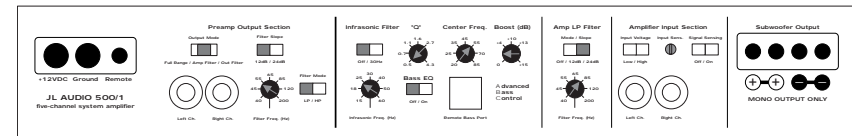
**Nominal Impedance:** 2 ohms mono

**Continuous Power Handling:** 400 Watts

**POWER RECOMMENDATION**

JL Audio recommends using a high quality amplifier such as the JL Audio 500/1.

The diagram below shows the recommended crossover, infrasonic filter and equalizer settings for the 500/1 when being used to power your Stealthbox<sup>™</sup>.



The JL Audio 500/1 is a very versatile audio component. Please consult the owner's manual for even more detailed information about installing and tuning this amplifier.

**MID/HIGH FREQUENCY DRIVER FITMENT**

A variety of JL Audio coaxial and component systems will fit in the factory speaker locations of your vehicle.

**Front Speaker Size / Location:** 6.5-inch / Front Doors

**Fits JL Audio Models:** TR650-CSi, TR650-CXi, VR650-CSi, VR650-CXi, XR650-CSi, XR650-CXi, C5-650, C5-650x & ZR650-CSi

**Rear Speaker Size / Location:** 6.5-inch / Rear Doors

**Fits JL Audio Models:** TR650-CXi, VR650-CXi, C5-650x & XR650-CXi



**JL AUDIO**<sup>®</sup>  
*Ahead of the Curve*<sup>™</sup>

(954) 443-1100

www.jlaudio.com

All specifications are subject to change without notice. "JL Audio" and the JL Audio logo, "Stealthbox" and the Stealthbox logo are registered trademarks of JL Audio, Inc. "Ahead of the Curve" and its respective logo is a trademark of JL Audio, Inc.  
**JLA-SKU#011231-04-23-2067** • Printed in USA • ©2007 JL Audio, Inc. • U.S. PATENTS: #5,734,734 #5,949,898 #6,118,884 #6,229,902 #6,243,479 #6,294,959 #6,501,844 #6,496,590 #6,441,685 #5,687,247 #6,219,431 #6,625,292 #D472,891 #D480,709 Other U.S. & Foreign patents pending. For more detailed information please visit us online at [www.jlaudio.com](http://www.jlaudio.com).



10369 NORTH COMMERCE PARKWAY • MIRAMAR, FLORIDA • 33025 • USA

## Free Manuals Download Website

<http://myh66.com>

<http://usermanuals.us>

<http://www.somanuals.com>

<http://www.4manuals.cc>

<http://www.manual-lib.com>

<http://www.404manual.com>

<http://www.luxmanual.com>

<http://aubethermostatmanual.com>

Golf course search by state

<http://golfingnear.com>

Email search by domain

<http://emailbydomain.com>

Auto manuals search

<http://auto.somanuals.com>

TV manuals search

<http://tv.somanuals.com>