



# Everio

## Easy Start Guide

This easy start guide is designed to navigate you to using your new Everio quickly. Please refer to the owner's manual for a detailed listing of features.

For more details on operating this product, please refer to the "Detailed User Guide" at the following website:  
<http://manual.jvc.co.jp/index.html/>

For additional online video tutorials, please visit:  
<http://camcorder.jvc.com/tutorials.jsp>



For more details on operating this product, please refer to the "Detailed User Guide" at the following website:  
<http://manual.jvc.co.jp/index.html/>

For additional online video tutorials, please visit:  
<http://camcorder.jvc.com/tutorials.jsp>

Customer Care Center  
 TOLL FREE 1-800-252-5722

Register your EVERIO online at:  
[REGISTER.JVC.COM](http://REGISTER.JVC.COM)  
 and receive a special offer.

JVC U.S.A.  
 A Division of JVC Americas Corp.  
 1700 Valley Road, Wayne, NJ 07470  
[www.jvc.com](http://www.jvc.com)



C1DW 0111TKH-SW-VM

### Accessories

AC Adapter AP-V20U*	Battery Pack BN-VF815U	Remote Control RM-V760U	USB Cable (Type A - Mini Type B)
AV Cable	HDMI Mini Cable	CD-ROM	Basic User Guide

### AVAILABLE ACCESSORIES FOR THE CAMERA

Product Name*	Description
Battery Pack • BN-VF815U • BN-VF823U	• Provides a longer recording time than the battery pack that comes with this unit or it can also be used as a spare battery pack.
Battery Charger • AA-VF8U	• Enables the battery pack to be charged without using this unit.

\* To order any of these accessories please visit [www.store.jvc.com](http://www.store.jvc.com) or call 1-800-252-5722

### TYPES OF USABLE SD CARDS

Memory Cards	Capacity	Video		Still images	
		3D Mode AVCHD (TXP)	2D	3D (1920x1080/ 16:9)	2D
SD Cards	Supports 256 MB to 2 GB	256 MB	-	-	-
		512 MB	-	120	-
		1 GB	-	250	-
		2 GB	-	500	-
SDHC Cards <SD High capacity>	Supports 4 GB to 32 GB	4 GB	30 m	1000	-
		8 GB	1 h	2200	-
		16 GB	2 h	4400	-
		32 GB	4 h 10 m	4999	-
SDXC Cards <SD Extended capacity>	Supports max. 64 GB	48 GB	6 h 10 m	4999	-
		64 GB	8 h 20 m	4999	-

Note: Operations are confirmed on the following SD cards.

Manufacturer	Panasonic, TOSHIBA, SanDisk
Video	Class 4 or higher compatible SD card (2 GB) / Class 4 or higher compatible SDHC card (4 GB to 32 GB) / Class 4 or higher compatible SDXC card (48 GB to 64 GB) (When recording with image quality "THR", Class 10 is recommended. (Class 6 or higher is required.)) (When recording with image quality "UXP", Class 6 or higher is recommended.)
Still Image	SD card (256 MB to 2 GB) / SDHC card (4 GB to 32 GB) / SDXC card (48 GB to 64 GB)

• Using cards other than those specified above may result in recording failure or data loss.

### Getting Started

### CHARGING THE BATTERY

- Close the LCD to turn Off the Power
- Open the battery cover and insert the battery pack
- Connect AC adapter into DC connector
- Connect the AC adapter to outlet

Charging in progress: Blinks  
 Charging finished: Goes out

Battery Type	Charging Time	Continuous Recording		Actual Recording	
		3D AVCHD/MP4(MVC)	2D	3D AVCHD/MP4(MVC)	2D
BN-VF815U (Supplied)	2 h 40 m	2 h 1 h 45 m	2 h 35 m	1 h 55 m	1 h 20 m
BN-VF823U	3 h 40 m	3 h 05 m/2 h 40 m	1 h 55 m	1 h 35 m/1 h 20m	3 h 50 m

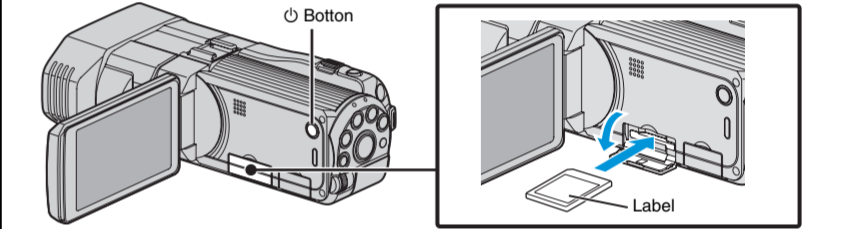
Note: The battery pack is not charged at the time of purchase.  
 • The above are values when "MONITOR BRIGHTNESS" is set to "3" (standard).

### CAUTION

• Be sure to use JVC battery packs. If you use any other battery packs besides JVC battery packs, safety and performance cannot be guaranteed.

### INSERTING THE SD CARD\*

- Turn off this unit.  
 • Turn off the camcorder by pressing the  $\odot$  button for about 2 seconds.
- Open the cover and insert an SD card.

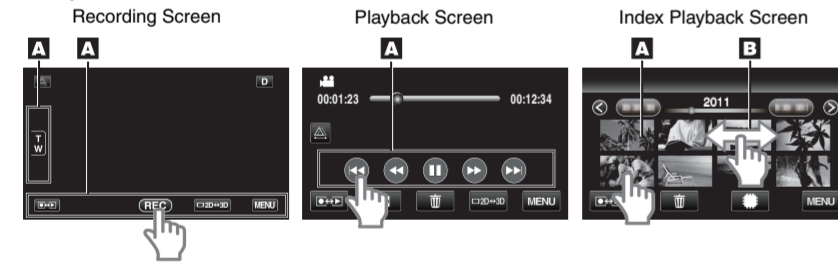


### USING THE ICON BUTTONS/THUMBNAILS

There are two ways to operate the touch screen, namely "tap" and "drag". The following are some examples.

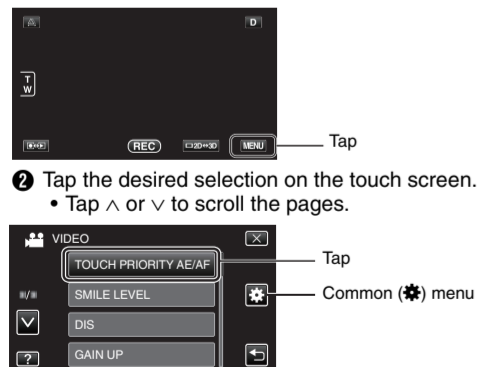
- Tap the displayed button (icon) or thumbnail (file) on the touch screen to make selection.
- Drag the thumbnails on the touch screen to search for the desired file.

Example:



### CHANGING MENU SETTINGS

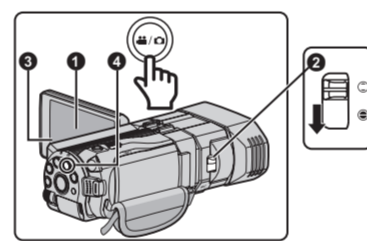
Select an item from the menu screen.  
 1 Tap MENU on the touch screen to display the main menu.



• Selections are also available in the Common (gear) menu.

### RECORDING FILES

- Open the LCD monitor to turn on the unit.
- Open the lens cover by sliding the switch down.
- Verify that the unit is in the recording mode.  
 • If in the playback mode, tap  $\leftarrow$  to switch.  
 • The mode changes between recording and playback with every tap.
- Press the  $\text{START/STOP}$  button on the unit to select the video or still image mode.  
 The Mode will be displayed in the LCD.



### VIDEO RECORDING

Press to Start Recording  
 • Press again to Stop Recording.

The information below will be displayed on the LCD during recording.

3D/2D Mode	Recording Media
Video Quality	Battery Indicator
i.A.	Intelligent Auto Mode
0:00:00 [000:22]	Remaining Recording Time
Scene Counter	

### STILL IMAGE RECORDING

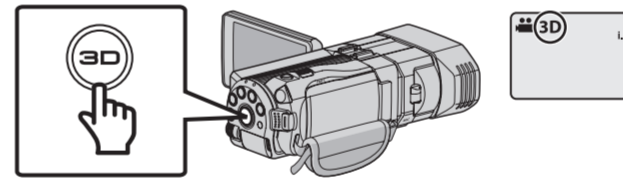
Press halfway to focus  
 Lights up in green when focused

Press fully to take still image  
 Lights up during still image recording

3D/2D Mode	Recording Media
Shutter Speed	Battery Indicator
Image Size	i.A.
Focus	Intelligent Auto Mode
Recording in Progress	PHOTO [ 8 ]

### RECORDING 3D IMAGES

3D images can be recorded and played back on this unit. Switch to the 3D mode by pressing the 3D button such that "3D" is displayed on the screen.



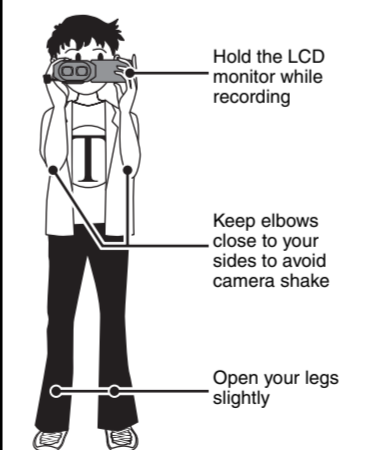
### 3D Recording Formats

There are 2 types of 3D recording formats. By default, "3D VIDEO REC FORMAT" in the menu is set to "AVCHD". To change the setting to "MP4(MVC)", refer to the Detailed User Guide.

AVCHD	Higher 3D playback compatibility
MP4(MVC)	Higher 3D video quality

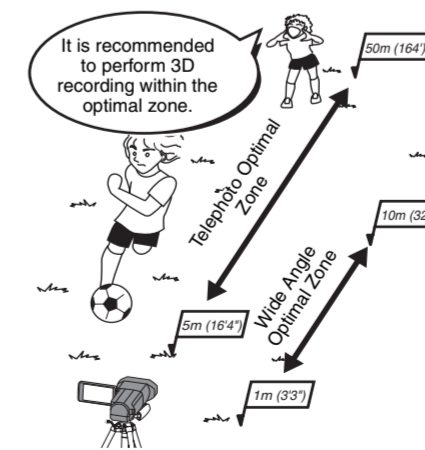
- Videos recorded in MP4(MVC) format can only be played back in 3D by this unit.
- By dubbing videos recorded in AVCHD format to a Blu-ray recorder, the left and right images can be recorded or played back separately.

### Basic Way to Hold a Camcorder During 3D Recording



• The use of a tripod is recommended.

### Shooting Distance During 3D Recording



### 3D LCD Monitor

3D images are supported on the camera's LCD monitor. Press the "3D/2D" button on the touch screen to change the display on the camera's LCD monitor between 3D and 2D.

### Recording Techniques

#### Preparation

- Always check available memory space and battery power in advance.
- Make sure your battery is fully charged.
- A spare battery may be useful.

#### Stabilizing Your Picture

- Try these tips to improve the image:
- Look for a place to sit down and take your video.
  - Look for something you can set your camera on.
  - Consider using a tripod or a monopod to further steady your video.

#### Camera Movement

- The most enjoyable and professional looking videos generally have very little camera movement
- Treat all movements as a special effect.
  - If you must move the camera, do it slowly.

#### Zooming

- As a general rule, your video will look better if you zoom the lens before you start your recording:
- Focus on the subject first, then begin recording.
  - If you must zoom during a recording, treat it as a special effect and zoom slowly.

#### Exposure

- Remember to shoot with the sun or the primary light source behind you.
- Keeping the range of contrast in your scene to a reasonable level is the easiest way to improve the picture quality.
- Pay special attention to objects in the LCD screen that appear very washed out or over exposed.
- Making a simple change in how the camera is aimed or by zooming in slightly, you may reduce contrast to a reasonable range.

#### Length of Recording

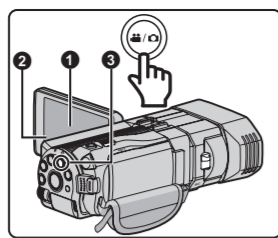
- Many recordings are ruined by stopping the recording too soon and missing the best moment:
- Always try for at least a 10 second recording.
  - When in doubt, let the recording continue longer.
  - It is much easier to edit unneeded material later.

### Using the Touch Screen

### Recording Files (cont.)

PLAYBACK VIDEOS

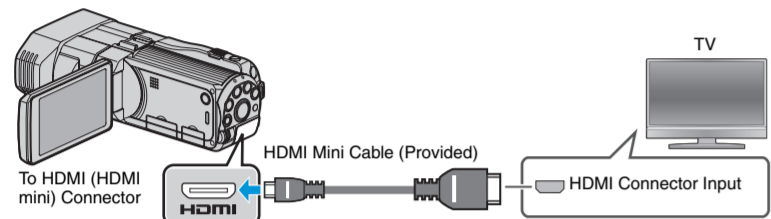
- Open the LCD monitor to turn on the unit.
- Tap **[<|>]** on the touch screen to select the playback mode.
- Press the **[M/IC]** button on the unit to select the video or still image mode.
- Tap on the thumbnail on the index screen to play back.
  - Tap **[<]** or **[>]** to scroll the pages.



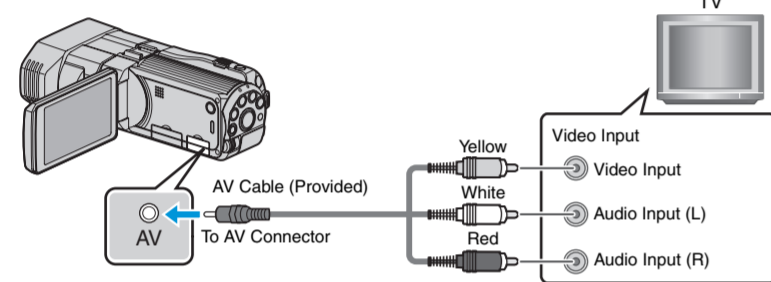
PLAYBACK ON TV

Preparation:

- Turn off both camera and TV.
- To connect using the HDMI mini connector**
  - When connecting to a 3D compatible TV, set [HDMI OUTPUT] to [AUTO].



- To connect using the AV connector**
  - Change the settings in [VIDEO OUTPUT] according to the connection.

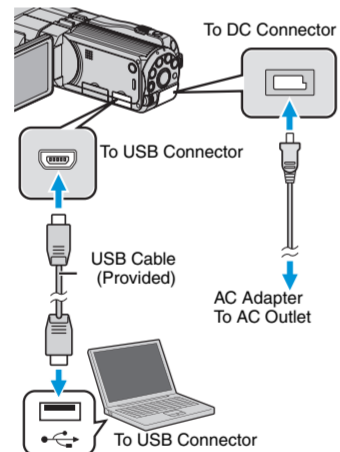


- Playback Operation**
- After the connection with TV is completed,
- Turn on the camera and the TV.
  - Select the TV input switch.
  - Start playback on the camera.

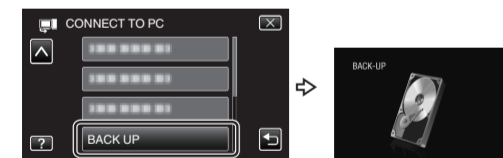
FILE BACKUP (Windows)

Preparation:

- Install the Everio MediaBrowser 3D software onto the PC.
- Make sure that enough space is left in the PC's HDD.
- Turn off the camera by pressing the **[OFF]** button for about 2 seconds.
- Connect the camera to the PC with the USB cable.



- On the camera:**
- Turn on the camera by pressing the **[ON]** button for about 2 seconds.
  - Tap **[CONNECT TO PC]** on the camera's touch screen.
  - Tap **[BACK UP]** on the camera's touch screen. Everio MediaBrowser 3D starts on the PC.



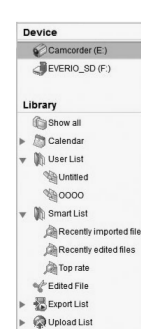
- On the PC:**
- Select the volume.
  - Start backup.



VIEW YOUR VIDEO (Windows)

- To view video that is still on your camcorder, click on Device>Camcorder in the left side panel of Everio MediaBrowser 3D.
- To view video that has already been archived to the computer, click on Library>Calendar and then choose the date the video was recorded.

**Note:** Choose Settings/Preferences to see the folder where MediaBrowser stores your videos. You can also play back your videos from this folder in most popular media players.



Archive & Share Overview

Make a Disc (Windows)

KEEP IT HIGH DEFINITION (Windows)

Back up to a computer

The provided JVC software also makes it easy to copy your videos to a computer.

For customers with a Blu-ray Player:

The provided JVC software lets you create high definition AVCHD discs using standard blank DVD-R media, and your Windows PC with DVD Burner. An AVCHD disc is a great choice because it contains the original HD video, which can be stored on inexpensive blank DVD-R media. These discs can be played back in virtually any recent Blu-ray player that has the AVCHD logo.

UPLOAD TO YouTube™

YouTube™ is a great way to share your videos, in either HD or SD quality. JVC makes it easy. Please see "Upload to YouTube™" section.

COPYING FILES

You can create discs or copy the files on this unit by connecting it to various devices.

- ✓ : Recordable and playable
- : Not applicable

Media Selection	2D Files			3D Files		
	AVCHD DVD (DVD Disc)	Blu-ray Disc (Blu-ray Disc)	HDD (Device's internal HDD)	AVCHD DVD (DVD Disc)	Blu-ray Disc (Blu-ray Disc)	HDD (Device's internal HDD)
DVD Writer	✓	—	—	—	—	—
External Blu-ray Drive	✓	✓	—	—	✓	—
Computer	*1	*1	✓	—	—	*1

Upper row : MP4(MVC)  
Lower row : AVCHD

\*1 For details, refer to the Detailed User Guide or the help file of Everio MediaBrowser 3D.

Each of these solutions is explained in detail in the following sections.

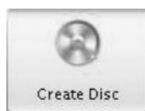
AVCHD DISC CREATION (Windows)

- Everio MediaBrowser 3D makes it possible to create AVCHD discs to archive your recordings in their original high definition quality.
- You can use any standard DVD-R, DVD-RW, DVD+R or DVD+RW disc.
- Recordings are recorded with no loss in quality. Recordings made in the UXP mode are first converted to the XP mode, and then recorded.
- A standard 4.7 GB disc will hold approximately 35 minutes of video in the highest quality setting.
- AVCHD discs can be played back in any Blu-ray player that is AVCHD compatible. Just look for the AVCHD logo.



Preparation:

- Install the software on your PC.
- Click on the "Create Disc" button.
  - Select the video clips you wish to include.
  - Choose a menu background and enter a menu title.
  - Create the AVCHD disc.



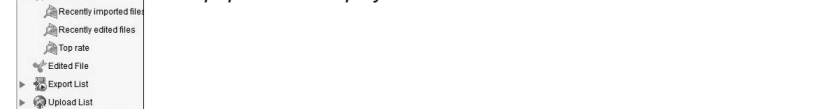
**Note:** In order to include UXP recordings on your AVCHD discs, be sure to go to Settings>Disc Creation Settings, and under "AVC Disc Creation in UXP mode", choose "Re-encode to XP mode quality level".

MP4(MVC)\*

There are limitations when recording 3D images onto the disc depending on the recording formats. For details, refer to "Help" - "MediaBrowser Help".

- To save MP4(MVC) to a disc, use an external Blu-ray drive. In addition, only Blu-ray discs can be used.
- You can view the created disc on the TV by connecting this unit to the external Blu-ray drive.

\* MP4(MVC): MVC (Multiview Video Coding) extension of MPEG-4 AVC standard specified in Annex H of ISO/IEC 14496-10.



Everio MediaBrowser 3D (Windows)

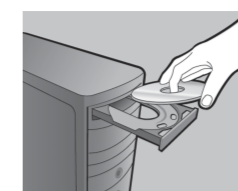
Upload to YouTube™ (Windows)

Everio MediaBrowser 3D (Windows)

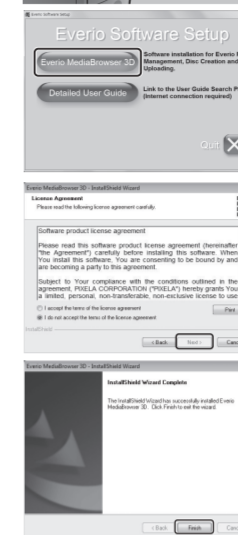
Everio MediaBrowser 3D is included with your camcorder. It lets you archive and organize your videos. It also lets you create discs and upload video to YouTube™, and other popular web sites.

Preparation:

- Load the provided CD-ROM into the PC.
- In Windows Vista, the auto play dialog box appears.



- Click [Everio MediaBrowser 3D].
- Follow the on-screen instructions.

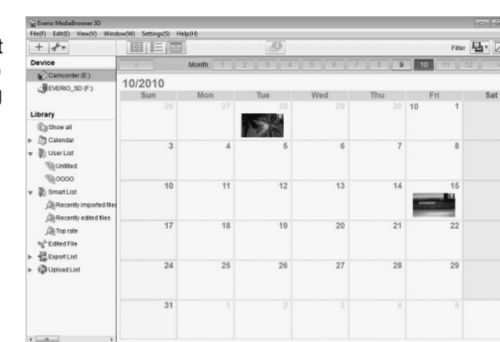


- Click [Next].

- Click [Finish].
- Everio MediaBrowser 3D icons are created on the desktop.



- Everio MediaBrowser 3D uses a Calendar based interface that makes it easy to find any video you have recorded by selecting the appropriate date.



HOW TO UPLOAD A FILE (VIDEO CLIP) TO YouTube™ (Windows)

Uploading Videos

You can upload your videos to YouTube™ using the provided software "Everio MediaBrowser 3D".

Preparation:

- Install the software on your PC.

- Click on the "YouTube™" button.
- Select the video clips you wish to include.
- Enter account and upload information.
- Start upload to YouTube™.



Trouble with Uploading Videos

- Check if you have created an account with YouTube™.

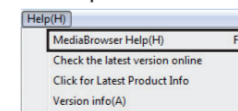
Trouble with Using the Provided Software Everio MediaBrowser 3D

Consult the customer service center below.

- Pixela User Support Center

Region	Language	Phone #
USA and Canada	English	+1-800-458-4029 (toll-free)
Europe (UK, Germany, France, and Spain)	English/German/ French/ Spanish	+800-1532-4865 (toll-free)
Other Countries in Europe	English/German/ French/ Spanish	+44-1489-564-764
Asia (Philippines)	English	+63-2-438-0090
China	Chinese	10800-163-0014 (toll-free)

For details on how to upload to YouTube™, refer to "MediaBrowser Help".



TRADEMARK

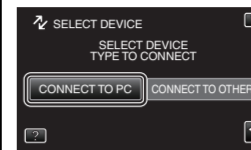
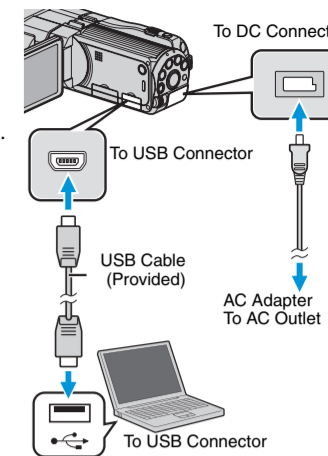
- Windows® is either registered trademark or trademark of Microsoft Corporation in the United States and/or other countries.
- YouTube and the YouTube logo are trademarks and/or registered trademarks of YouTube LLC.

USB MENU OPERATIONS

By connecting a USB cable between this unit and your computer, you can perform operations such as file backups to PC/disc or file uploads to file-sharing site using your computer.

Preparation:

- Install the Everio MediaBrowser 3D software onto the PC.
- Turn off the camera by pressing the **[OFF]** button for about 2 seconds.
- Connect the camera to the PC with the USB cable.
- Turn on the camera by pressing the **[ON]** button for about 2 seconds.
- The [SELECT DEVICE] menu appears. Tap **[CONNECT TO PC]** on the camera's touch screen.



- Tap **[CONNECT TO OTHER]** if the camera is connected to a device other than a computer.
- The **[CONNECT TO PC]** menu appears. Tap an option that best suits your needs.



Option	Usage
PLAYBACK ON PC	<ul style="list-style-type: none"> <li>To play back your recordings on the PC.</li> <li>To back up your recordings on the PC without using the provided software.</li> </ul>
CREATE DISC	To save your recordings on a disc.
UPLOAD	To upload videos to YouTube™.
BACK UP	To back up recordings on the PC.

For detailed operations on the above options, refer to the other sections in this guide or the "Detailed User Guide".

HOW TO TRANSFER FILES TO iTunes (Windows PC only)

You can export videos to iTunes using the provided software "Everio MediaBrowser 3D". Install the software on your PC and connect this unit to the PC.

- For details on how to use the software, refer to the help file.
- For details on transferring files to iPod, refer to the help file of iTunes.

Trouble with Exporting Files to iTunes

- Refer to "Q&A", "Latest Information", "Download Information", etc. in "Click for Latest Product Info" in the help file of the provided Everio MediaBrowser 3D software.

Trouble with Using the Provided Software Everio MediaBrowser 3D

- Contact Pixela User Support Center at the numbers provided on the previous page.

Export to iTunes® (Windows)

## Free Manuals Download Website

<http://myh66.com>

<http://usermanuals.us>

<http://www.somanuals.com>

<http://www.4manuals.cc>

<http://www.manual-lib.com>

<http://www.404manual.com>

<http://www.luxmanual.com>

<http://aubethermostatmanual.com>

Golf course search by state

<http://golfingnear.com>

Email search by domain

<http://emailbydomain.com>

Auto manuals search

<http://auto.somanuals.com>

TV manuals search

<http://tv.somanuals.com>