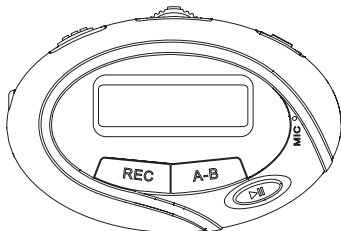


JENSEN®

DIGITAL AUDIO PLAYER



USER
MANUAL
SMP-1GBEB

PLEASE READ THIS OPERATING MANUAL COMPLETELY BEFORE OPERATING
THIS UNIT AND RETAIN THIS BOOKLET FOR FUTURE REFERENCE.

100mm x 80mm

DEAR JENSEN® CUSTOMER

Selecting fine audio equipment such as the unit you've just purchased is only the start of your musical enjoyment. Now it's time to consider how you can maximize the fun and excitement your equipment offers. This manufacturer and the Electronic Industries Association's Consumer Electronics Group want you to get the most out of your equipment by playing it at a safe level. One that lets the sound come through loud and clear without annoying blaring or distortion and, most importantly, without affecting your sensitive hearing. Sound can be deceiving. Over time your hearing "comfort level" adapts to higher volumes of sound. So what sounds "normal" can actually be loud and harmful to your hearing. Guard against this by setting your equipment at a safe level BEFORE your hearing adapts.

To establish a safe level:

- Start your volume control at a low setting.
- Slowly increase the sound until you can hear it comfortably and clearly and without distortion.

Once you have established a comfortable sound level:

- Set the dial and leave it there.

Taking a minute to do this now will help to prevent hearing damage or loss in the future. After all, we want you listening for a lifetime.

We Want You Listening For a Lifetime

Used wisely, your new sound equipment will provide a lifetime of fun and enjoyment. Since hearing damage from loud noise is often undetectable until it is too late, this manufacturer and the Electronic Industries Association's Consumer Electronics Group recommend you avoid prolonged exposure to excessive noise.

Customer's Record:

The serial number of this product is found on the unit. You should note the serial number of this unit in the space provided as a permanent record of your purchase to aid in identification in the event of theft or loss.

Model Number: SMP-1GBEB

Serial Number: _____

100mm x 80mm

SAFETY INFORMATION

Read this user guide carefully to ensure proper use of the product and to avoid any danger or physical damage.

- ◆ Do not use the Player in extremely hot, cold, dusty and moist environment.
- ◆ Do not drop the Player, this could cause external damage or damage to internal components.
- ◆ Do not repair the player by yourself, or it will cause damage.
- ◆ Do avoid getting the MP3 player wet or drop it in water.
- ◆ We don't suggest you to use the Player when driving or doing other things that you must fully concentrate in. It may cause distraction.
- ◆ When using your MP3 player, pay attention to your health, especially the power of hearing.
- ◆ To avoid static electricity, do not operate the Player in extremely dry environment.
- ◆ Always use the accessories provided by or approved by our company, also do not spray water on the player.
- ◆ Please follow the right way to upload/download data, we won't be responsible for the lost of date due to wrong operation.
- ◆ Please backup important data onto your personal computer as repair or other causes may result in data loss.

COMPLIANCE WITH FCC REGULATIONS

This equipment has been tested and found to comply with the limits for a Class B digital device, pursuant to Part 15 of the FCC Rules. These limits are designed to provide reasonable protection against harmful interference in a residential installation.

This equipment generates, uses and can radiate radio frequency energy and, if not installed and used in accordance with the instructions, may cause harmful interference to radio communications. However, there is no guarantee that interference will not occur in a particular installation. If this equipment does cause harmful interference to radio or television reception, which can be determined by turning the equipment off and on, the user is encouraged to try to correct the interference by one or more of the following measures :

- Reorientate or relocate the receiving antenna.
- Increase the separation between the equipment and receiver.
- Connect the equipment into an outlet on a circuit different from that to which the receiver is connected.
- Consult the dealer or an experienced radio technician for help.

NOTE: THE MANUFACTURER IS NOT RESPONSIBLE FOR ANY RADIO OR TV INTERFERENCE CAUSED BY UNAUTHORIZED MODIFICATIONS TO THIS EQUIPMENT. SUCH MODIFICATIONS COULD VOID THE USER'S AUTHORITY TO OPERATE THE EQUIPMENT.

100mm x 80mm

WARNING

- ◆ If the unit is not to be used for an extended period of time, remove the batteries.
- ◆ Old or leaking batteries can cause damage to the unit and may void the warranty.
- ◆ Only adults should replace batteries.
- ◆ Replace the batteries when the unit stops operating properly.
- ◆ Use only fresh batteries of the required size and recommended type.
- ◆ Dispose of old batteries promptly and properly. Do not burn or bury them.
- ◆ Non-rechargeable batteries are to be recharged under adult supervision.
- ◆ Only batteries of the same or equivalent type as recommended are to be used.
- ◆ Remove exhausted battery from the unit.
- ◆ The supply terminals are not to be short-circuited.
- ◆ Battery must be inserted with the correct polarity.
- ◆ Do not dispose of batteries in fire, batteries may explode or leak.

INTRODUCTION

This device incorporates a portable WMA/MP3 Player, Voice Recorder and USB 2.0 Mass Storage Device.

Player Features:

- ◆ Playback of MP3 (MPEG-1 Audio Layer-3) and WMA (Windows' Media Audio)
- ◆ DRM (Digital Rights Management) for Content/Copy Protection
- ◆ USB V2.0 Interface for Full Speed Downloads
- ◆ 1G MB Built-in Flash Memory
- ◆ Support ID3 Tag
- ◆ Backlit display
- ◆ Digital Preset EQ: Natural, Rock, Pop, Classic, Soft, Jazz and DBB.
- ◆ Voice Recording
- ◆ Stereo FM Tuner with 20 Presets

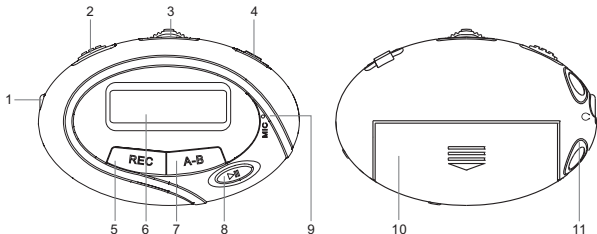
System support:

- Supports Windows ME/2000/XP/VISTA.
- Supports Mac OS X (version 10.2.6 or above) without driver.

Note: To minimize damage from static electricity, avoid operating the player in an extremely dry household environment. The product may malfunction and require user to reset the product.

100mm x 80mm

LOCATIONS OF CONTROLS



1. Headphone jack
2. HOLD button
3. **←** / MENU (Confirm) / **→** + button
4. Micro USB port
- 5 REC button

6. LCD display
7. A-B repeat / VOLUME adjust button
8. PLAY / PAUSE button
9. MIC (Microphone)
10. Battery Compartment ("AAA")
11. Neck strap hole

ACCESSORIES

IMPORTANT: Make sure you can locate the following items after opening the package.

- USB cable for PC connection and music synchronization
- Ear buds with neck strap
- Armband
- Headphones adaptor
- User Manual
- "AAA"(UM-4) battery

100mm x 80mm

BASIC OPERATIONS

Turn power on and play music

1. Install an AAA (UM-4) battery into the battery compartment.
2. Plug the ear buds into the earphone jack.
3. Make sure **HOLD** button is in the "Unlock" position
4. Press and hold **PLAY / PAUSE** button to turn the unit on.



During the music playback mode, press the **MENU** button to enter into submenu (*MENU 1*) and you can press **←** / **→** button to select the following choices: Repeat, Equalizer, SRS WOW, Tempo rate, Replay, Replay times, Replay Gap, Exit).



To return to the main menu: press and hold **MENU** button.



To start or pause the music: Press **PLAY / PAUSE** button.

In the pause mode, press the **MENU** button to enter into another submenu (*MENU 2*): Play List, Artists, Album, Genre, Composers, License Inf (Information), Local folder, Delete file, Delete all, Exit.



Note: "Play List", "Artists", "Album", "Genre", "Composers", "License Inf." modes are effective in Media Device and no use in USB Disk state (Please refer to SYSTEM/Online Device)

To change tracks: Short press **←** / **→** button.

To turn unit off: Press and hold **PLAY / PAUSE** button.

MENU NAVIGATION

MENU button: Enter main menu, submenu or Confirm.

Skip button (**←** / **→**): Shift menus.

Play / Pause button: Play, pause or return

VOLUME ADJUSTMENT (IMPORTANT NOTE!!!)

In music playing, RPL, FM mode, press **A-B** button, it will appear the volume column, at this time press **←** / **→** button to turn down/up the volume.

100mm x 80mm

BASIC OPERATIONS

- (i) **REPEAT (MUSIC/MENU 1):** *Let you enjoy your music playback with repetition.*
1. Select REPEAT mode and short press the **MENU** button to enter.
 2. Short press **◀◀ / ▶▶** button to select your desired option (e.g. Normal, Repeat One, Folder, Repeat Folder, Repeat All, Random and Intro.)
 3. Short press the **MENU** button to confirm your selection.
- (ii) **EQUALIZER (MUSIC/MENU 1):** *Let you select different music effect.*
1. Select EQUALIZER mode and short press the **MENU** button to enter.
 2. Short press **◀◀ / ▶▶** button to select your desired option (e.g. Natural, Rock, Pop, Classic, Soft, Jazz and DBB)
 3. Short press the **MENU** button to confirm your selection.
- Note: EQ (EQUALIZER) mode is not obvious while playing WMA format music files.**
- (iii) **SRS WOW MODE (MUSIC/MENU 1):** *To enhance your music playback with better spacious sense of ambience.*
1. Select "SRS WOW mode" and press the **MENU** button to enter.
 2. Press **◀◀ / ▶▶** button and **MENU** button to select SRS WOW, Adjust WOW and Exit.
 3. If you choose Adjust WOW, you can select: SRS 3D, TruBass, FOCUS and Exit.
- (iv) **TEMPO RATE (MUSIC/MENU 1):** *You can adjust you music playback tempo rate.*
1. Select "TEMPO RATE" mode and press the **MENU** button to enter.
 2. Press **◀◀ / ▶▶** button to adjust the playback rate: from -8 to 8.
 3. Press the **MENU** button to confirm your setup.
- Note: Only the MP3 format music supports "Tempo rate" function.**
- (v) **REPLAY (A-B) (MUSIC/MENU 1):** *You can define the certain music playback period to repeat.*
1. Select "REPLAY" mode and press the **MENU** button to select "A" point.
 2. Press the **A-B** button again to select "B" point, and press the **A-B** button again to start "REPLAY" mode.
 3. Press the **MENU** button to cancel "REPLAY" mode.
- (vi) **REPLAY TIMES (MUSIC/MENU 1):** *You can select the A-B replay times.*
1. Select "REPLAY TIMES" mode and press the **MENU** button to enter.
 2. Short press **◀◀ / ▶▶** button to select the A-B REPEAT TIMES (from 1 to 10).

100mm x 80mm

BASIC OPERATIONS

- (vii) **REPLAY GAP (MUSIC/MENU 1):** You can select the time interval (in second) between each A-B replay.
1. Select "REPLAY GAP" mode and press the **MENU** button to enter.
 2. Short press **-◀ / ▶+** button to select the A-B REPEAT GAP (from 1 to 10 seconds).
- (viii) **PLAYLIST, ARTISTS, ALBUMS, GENRE, COMPOSERS LICENSE INFO AND LOCAL FOLDER (MUSIC/MENU 2):** You can select your favorite music by these divisions.
1. Select the division by pressing the **MENU** button.
 2. Press the **-◀ / ▶+** button and **MENU** button to browse through the music you have by the selected division.
- (ix) **DELETE FILE AND DELETE ALL (MUSIC/MENU 2):** You can delete file or all files by the operation of this unit.
1. During your music playback in pause mode, you can get in this option to delete unwanted file.
 2. Press the **-◀ / ▶+** button and **MENU** button to confirm YES or NO

VOICE RECORD AND REPLAY OPERATIONS

There are two ways to enter **REC (RECORD)** mode.

- (A) Press and hold the **REC** button to start recording in any function mode
- (B) Press and hold the **MENU** button to enter main menu.
1. Press **-◀ / ▶+** button to select "REC" menu.
 2. Press the **MENU** button to enter.
 3. Short press the **MENU** button to enter into sub menu (Local folder, Track mode, REC type and Exit.)

NOTE: Please refer to the "Record type" in "SYS" mode about the "Voice record" or "MP3 Music Record/WAV Music Record". Different Record type has different Record submenu.

4. Short press the **REC** or **PLAY / PAUSE** button to start Recording.
5. Press **PLAY / PAUSE** button to pause or resume the recording.
6. To stop record and saving file, you have to press and hold the **REC** button.

RPL (PLAYBACK THE RECORDED FILES)

Select RPL mode in main menu and press the **MENU** button to enter. Then you can play the previously recorded files by pressing the **PLAY / PAUSE** button. Short press the **MENU** button can enter the submenu (Repeat, Tempo rate, Replay and exit.) They have the similar operations to the Music playback.



100mm x 80mm

FM RADIO OPERATIONS

1. Press and hold the **MENU** button to enter the main menu.
2. Select **FM** mode by pressing **-◀ / ▶+** button, and press the **MENU** button to confirm.
3. Short press the **MENU** button to enter the submenu (Save, Record, Delete, Delete all, Auto Search and Exit).

Note: There are **20** preset memory stations.



MANUALLY SEARCH THE FM STATIONS

1. Press **-◀ / ▶+** button to tune your favorite FM radio station by 0.1 Mhz steps.
2. Short press the **MENU** button to enter submenu.
3. Short press the **-◀ / ▶+** button and **MENU** button to select "**save**" menu and store the tuned FM station.

AUTOMATICALLY SEARCH THE FM STATIONS

1. Short press the **MENU** button to enter submenu.
2. Short press the **-◀ / ▶+** button and **MENU** button to select "Auto Search". You may need to wait several minutes to let all detectable stations be found and saved.

RECORD THE FM RADIO

1. Select "Record" mode and short press the **MENU** button to enter.
2. Short press the **REC** button to start FM record.
3. Press and hold the **MENU** or **PLAY / PAUSE** button to save the FM record.

FOR OTHER SUBMENU OPTIONS:

- ◆ Delete - delete the saved memory station.
- ◆ Delete all - delete all saved memory stations.

SETTINGS

1. Press and hold the **MENU** button to enter main menu.
2. Short press **←/→** button to select "**SYS**" mode.
3. Short press the **MENU** button to enter.
4. Press **←/→** button to choose individual settings (System Time, Record type, Backlight, Language, Power off, Replay mode, Contrast, Online Device, Online Mode, Memory info., DRM Time, Protect setting and Exit).
5. Short press the **MENU** button to confirm any selected setting.

(i) SYSTEM TIME:

1. Press / button to select **SYSTEM TIME** mode.
2. Short press the **MENU** button to enter the System Time interface.
3. Press the **A-B** button to switch different time variable. (Year>Month>Day>Hour>Minute>Second)
4. Press **←/→** button to decrease / increase the number.
5. Then press the **MENU** button to save your setup.

Note: The system time of this unit will be displayed in Military Time (24-hr) format. For example, 1:00pm to 11:00pm will appear as 13:00 to 23:00.



(ii) RECORD TYPE:

1. Select Record type and short press the **MENU** button to enter.
2. Short press **←/→** button to select the record type: Voice Record, WAV Music Record, MP3 Music Record.

Note: If you select "Voice Record", the recorded files will be played in RPL mode; Select "WAV Music Record" or "MP3 Music Record" the recorded files will be played in music mode.

(iii) BACKLIGHT:

1. Select "Backlight" mode and press the **MENU** button to enter.
2. Press **←/→** button to adjust the screen backlight: from 0 to 30.

(iv) LANGUAGE:

1. Select language mode and short press the **MENU** button to confirm.
2. Short press **←/→** button to select the system languages: Simplified Chinese, English, Traditional Chinese, Japanese and Korean.
3. Short press the **MENU** button to confirm.

100mm x 80mm

SETTINGS

(v) POWER OFF:

Short Press **← / →** button to select: Off time/Sleep time (Off time: 0-60 Sec; Sleep time: 0-120 Min).

(vi) REPLAY MODE:

Short press **← / →** to select "Manual replay" or "Auto replay".

(vii) CONTRAST:

Press **← / →** button to adjust the screen contrast: from 1 to 16.

(viii) ONLINE DEVICE:

Press **← / →** button to select "Media Device" or "USB Disk".

NOTE: This is an important option. For the Synchronization of DRM WMA music, Media Device must be selected.

(ix) ONLINE MODE:

Press **← / →** button to select "Multi Drive", "Normal Only" or "Encrypted Only".

FOR OTHER SETTING MENU OPTIONS:

- ◆ Memory info - It shows the internal memory status.
- ◆ DRM Time - You can set your own DRM time for the DRM music playback.
- ◆ Protect setting - It has Ear Protection, Earprotect level, Mode and Auto switch off.

100mm x 80mm

ADDING / REMOVING FILES / FOLDERS

You can use the player as a removable USB storage. **(The Online Device in Setting menu must be USB Disk)**

1. Connect the PC USB port and the MP3 USB port with the provided USB cable, your player will display:



2. Add files/folders to the USB storage's folder. Your player will display:



3. Open files/folders to transfer from your computer.
4. Open My Computer -> Removable Disk from the desktop.
5. Select the files/folders to transfer from your computer and drag and put them to a folder of your choice in the Removable Disk (you also can transfer files on your PC to the player using the "Copy" and "Paste" functions).



6. Delete MP3 files from the removable USB storage (use the "Delete" command). Your player will display:



100mm x 80mm

ADDING / REMOVING FILES / FOLDERS

Remove the player from PC Note: Please follow the steps in case of damaging the player or data loss.

1. Click the left mouse button on the icon  that is on the taskbar at the bottom right corner of the desktop.
2. Click the "Safely remove USB Mass Storage Device Drive (X:)" column.
3. Disconnect the player from your computer.

CAUTION:

- ◆ Do not remove the player while files within the USB Mass Storage are being played on your computer.
- ◆ Do not disconnect the player from your computer while transferring file, or it will cause damage to the player or data loss.

DRM

What is DRM?

It stands for **digital rights management**, a technology used to protect digital products from copyright infringement. When a customer buys a DRM-protected music download, the download is encrypted specifically for that customer. To allow the customer to use the file on a separate MP3 player they must link the DRM enabled player to Windows Media Player 10 and link both applications. This allows the downloaded music file to then be used on a separate digital music player.

How to synchronize the DRM songs into your MP3 player?

1. Purchase DRM songs from the internet, and download them into your computer.
2. Playback the songs that you downloaded, if it could be played, the download is successful, or you need to download again.
3. To make DRM function, the computer OS must be Windows XP system SP2 or higher version, installed with Windows Media player 10 or above, and have a valid internet connection.
4. Connect the DRM MP3 player with your PC, your PC will display:



100mm x 80mm

DRM



How to set your MP3 player into MTP mode?

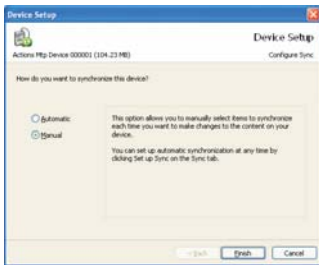
In "SYS" menu select "Online Device" submenu and enter by pressing the **MENU** button, then press **←** / **→** button to select "Media Device" for DRM function.



5. Click "OK" to start synchronization, your PC will display:

100mm x 80mm

DRM



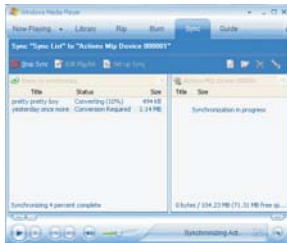
6. Select "Manual" or "Automatic" as your requirement, for example, select "Manual" and click "Finish", it will display:
7. Add the songs that you want to synchronize into the sync List.



100mm x 80mm

DRM

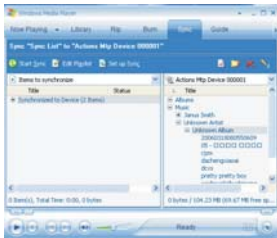
8. Click "Start Sync".



100mm x 80mm

DRM

9. The dexter frame will display the synchronized songs.



100mm x 80mm

SPECIFICATION

Compatible Operation System	Windows VISTA/XP/2000/ME Macintosh OS 10.2.6 or above
Music Format	MP3 (MPEG 1.0/2.0/2.5, Layer 1/2/3, ID3 display supported) and WMA (8Kbps/340Kbps)
Equalizer	Natural, Rock, Pop, Classic, Soft, Jazz and DBB.
USB Interface	USB2.0(High speed), Mini 4-pin USB
Internal Memory Size	1GB
LCD Display	132x32 Dot Matrix LCD with Blue LED Backlight
Signal-to-noise Ratio	>85dB
Audio Frequency Range	20Hz-20KHz
FM	87.50 ---- 108.00MHz Support 20 preset stations
File System	FAT16 and FAT32
Battery	One 1.5V (AAA/LR03) battery
Operating Temperature	5°C ----35°C (41°F---95°F)

SERVICE

Please refer to the instructions on the enclosed warranty card for returning your unit for service. When returning the unit, please remove batteries to prevent damage to the unit in transit and/or from possible battery leakage. We are not responsible for batteries returned with the product or for the cost of replacement.

Distributed by:

Spectra Merchandising International, Inc.

Chicago Industry Tech Park
4230 North Normandy Avenue
Chicago, IL60634, U.S.A.

Please have model number ready, for Customer Service, call 1-800-777-5331

Printed in China

Free Manuals Download Website

<http://myh66.com>

<http://usermanuals.us>

<http://www.somanuals.com>

<http://www.4manuals.cc>

<http://www.manual-lib.com>

<http://www.404manual.com>

<http://www.luxmanual.com>

<http://aubethermostatmanual.com>

Golf course search by state

<http://golfingnear.com>

Email search by domain

<http://emailbydomain.com>

Auto manuals search

<http://auto.somanuals.com>

TV manuals search

<http://tv.somanuals.com>