

JENSEN®

DIGITAL MEDIA PLAYER

**USER MANUAL
SMPV-2GBLB**

**PLEASE READ THIS OPERATING MANUAL COMPLETELY
BEFORE OPERATING THIS UNIT AND RETAIN THIS BOOKLET
FOR FUTURE REFERENCE.**

DEAR JENSEN® CUSTOMER

Selecting fine audio equipment such as the unit you've just purchased is only the start of your musical enjoyment. Now it's time to consider how you can maximize the fun and excitement your equipment offers. This manufacturer and the Electronic Industries Association's Consumer Electronics Group want you to get the most out of your equipment by playing it at a safe level. One that lets the sound come through loud and clear without annoying blaring or distortion and, most importantly, without affecting your sensitive hearing. Sound can be deceiving. Over time your hearing "comfort level" adapts to higher volumes of sound. So what sounds "normal" can actually be loud and harmful to your hearing. Guard against this by setting your equipment at a safe level BEFORE your hearing adapts.

To establish a safe level:

- Start your volume control at a low setting.
- Slowly increase the sound until you can hear it comfortably and clearly and without distortion.

Once you have established a comfortable sound level:

- Set the dial and leave it there.

Taking a minute to do this now will help to prevent hearing damage or loss in the future. After all, we want you listening for a lifetime.

We Want You Listening For a Lifetime

Used wisely, your new sound equipment will provide a lifetime of fun and enjoyment. Since hearing damage from loud noise is often undetectable until it is too late, this manufacturer and the Electronic Industries Association's Consumer Electronics Group recommend you avoid prolonged exposure to excessive noise.

Customer's Record:

The serial number of this product is found on the unit. You should note the serial number of this unit in the space provided as a permanent record of your purchase to aid in identification in the event of theft or loss.

Model Number: SMPV-2GBLB

Serial Number: _____

WARNING

- Do not throw the product into fire to avoid danger of explosion.
- Do not immerse into water or get soaked since the battery charging function will be lost.
- Place the product far away from heat sources, and protect the product from direct sunlight.
- Do not charge the internal rechargeable battery longer than specified to prevent danger of fire. Overcharging rechargeable batteries may shorten their life span.
- Do not unplug the unit during file transfer. It may cause malfunction to your PC and the unit.
- Do not plug in the earbuds or audio cable during file transfer.
- Do not use the product where electric appliances are prohibited.
- Protect the product from violent impact and vibrations.
- No compensation responsibility for malfunctions caused by improper use.
- It is prohibited to conduct illegal audio recording.
- Downloading can be delayed if there are too many folders or files.
- Do not attempt to disassemble or alter any part of the unit that is not expressly described in this guide. Internal inspections, alternations and repairs should be conducted by qualified service personnel.
- Save the data in the memory of the product to other storage device before repair. No compensation responsibility if the data are lost during repair.

BATTERY INFORMATION

On first use of the product, we recommend you to fully charge your unit. Connect the unit with the provided USB cable to the USB port of your personal computer correctly. Once the unit connects with the PC, it starts charging. It takes about 3 hours to fully charge the battery. The battery indicator in the top right corner of the LCD screen will appear with all 4 segments lit.

NOTE:

- To prolong the life of a rechargeable battery, completely discharge it before fully charging it again.
- Recharge the unit when below status shows:
 - low battery;
 - unit turns off on its own;
 - operation button not working normally.

INTRODUCTION

- Support MP3, WMA and WAV music formats
- View JPEG, GIF and BMP picture format
- Supports AMV video format (AMV video conversion software provided on the CD-Rom)
- USB mass storage device
- Voice can be recorded through a microphone and saved as a voice file in WAV or ACT format
- FM radio with 20 preset channels
- 7 different EQ modes and different repeat modes
- Auto power-off function
- Electronic book function
- Win2000, Win ME, Win XP and Vista system compatible
- Built-in Li-ion battery that can be charged via the PC USB port
- USB 2.0 interface for file transfer

Location of Control



Function Definition

1. PLAY: Power On / Play / Stop / Rec (when POWER ON/OFF is set to "ON")
2. MODE: Select / Enter
3. POWER ON/OFF: Main Power On/Off Slide Switch
4. NEXT: Next / Fast Forward (▶▶)
5. PRE: Previous / Fast Reverse (◀◀)

- 6. REC: Record/ Repeat A to B replay mode
- 7. VOL+: Volume up/ Fast volume up
- 8. VOL-: Volume down/ Fast volume down
- 9. USB: USB Connector for PC file transfer

Definition of Button Action

Button action includes: Press, Tap and Press & Hold. Unless otherwise specified, "Press" takes priority of other button actions.

Press: Normal Press (1-2 seconds) the button to invoke the function.

Tap: Quickly press the button to activate the function.

Press & Hold: Press & hold a button to speed up the function of that control, such as volume or LCD black screen time, Sleep Time adjust and Fast Forward/Reverse.

LCD Display

Please refer to below illustration for the icon in main menu.



Music	Movie	Record
Voice	FM Mode	View Picture
Sys Set	Ebook	

Operation Guide

IMPORTANT: Before first use we recommend you charge this unit a minimum of 3 hours by connecting it to the USB port on your computer.

1. Power On/Off

- Slide the POWER Switch to the ON position, the unit will turn on automatically.
- Press & Hold the PLAY button to turn off when the unit is on.
- Press & Hold the PLAY button to turn on the unit again.
- Slide the POWER Switch to the OFF position to power off the unit completely.

2. Music mode

2.1 Music Mode Interface



2.2 Music Operation

After turning the unit on, select the Music icon from the main menu using the **◀ / ▶** buttons. Press the MODE button to enter.

- 1) Press the PLAY button to start playing the current track shown.
- 2) While playing, press the PLAY button to pause and then press again to resume.
- 3) To adjust the volume level, press the VOL button, and then press VOL+ or VOL- to adjust the volume up or down. This unit has a built-in speaker that is active when the earbuds are not plugged in.
- 4) To skip to the previous or next track, press the **◀ / ▶** buttons. Press & Hold the **◀ / ▶** buttons to search within the song track.
- 5) While playing, tap the MODE button and then Press & Hold the MODE button again to return it to the main menu.

2.3 Lyrics display

While a song is playing and if the lyrics file is present, you can view the lyrics by pressing & holding the MODE button. Press the MODE button again to exit lyrics mode.

Note: This unit supports "XXXX.LRC" lyric files. It will run the lyrics on the display in sync with the music. Just make sure the lyric file and the song file have the same file name.

For example:

Song file name is: sky.mp3 Lyric file name is: sky.lrc

2.4 Music Setting Mode

In the music playing mode, tap the MODE button to enter music setting mode.

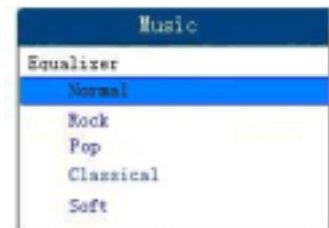
2.4.1 Repeat Setting

Press the ⏮ / ⏭ buttons to choose Repeat and then press the MODE button again to enter. Press ⏮ / ⏭ to select the repeat mode you prefer and press the MODE button again to confirm. The following repeat modes are available: Normal, Repeat One, Folder, Repeat Folder, Repeat All, Random and Intro.

- Normal: All songs tracks will play one after the other until all the songs on the list finish playing;
- Repeat One: Select one song track to play repeatedly;
- Folder: Plays all song tracks inside a selected folder once;
- Repeat Folder: Plays all song tracks inside a selected folder repeatedly;
- Repeat All: Play all song tracks repeatedly;
- Random: Play all song tracks in random order;
- Intro: Play every song track for 10 seconds sequentially before skipping to the next.

2.4.2 Equalizer (EQ) setting

After choosing the Equalizer submenu, press the ⏮ / ⏭ buttons to choose the EQ mode. There are 7 EQ modes available: Normal, Rock, Pop, Classical, Soft, Jazz and DBB. Press the MODE button to confirm.



2.4.3 Tempo rate setting:

After choosing the Tempo rate submenu, press the ⏮ / ⏭ buttons to set the rate of playback. There are 17 levels from -8 to +8 in which -8 is the lowest, +8 is the highest and 0 means original speed. Press the MODE button to confirm.

2.4.4 Replay (A to B) setting

Choose the "Replay" submenu, and "A" starts to blink on the screen. Press the ⏭ button to select the start point "A", then "B" will start to flash for end point selection. Press the ⏭ button to set the replay end point B. "A-B" stops flashing and now it automatically starts to replay the passage between markers A and B.



If you want to change the marker points for a new replay passage, just press ⏮, then "A" starts to flash and then repeat the above steps to complete.

If you want to cancel the replay mode, press the MODE button once and the "A-B" icon will disappear.

2.4.5 Replay time setting

Replay time means the number of times the replay passage will be played. Choose from 1 to 10 by pressing the ⏮ / ⏭ buttons and then press the MODE button to confirm.

2.4.6 Replay gap setting:

Replay gap is the pause time between successive replays. Choose from 1 to 10 seconds by pressing the ⏮ / ⏭ buttons and then press the MODE button to confirm.

2.4.7 Exit

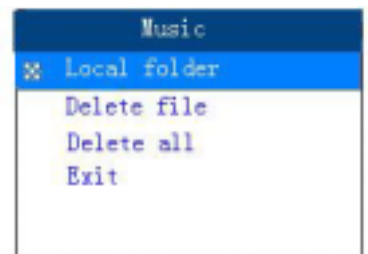
Choose EXIT to return to music mode.

2.5 Music Pause Mode

When the music playback is paused, tap the MODE button to enter the music folder/file mode. The following options are present.

2.5.1 Local folder

Press the ⏮ / ⏭ buttons to choose and then press the MODE button to enter. Select the desired local folder using the ⏮ / ⏭ buttons and then press the MODE button to confirm.



2.5.2 Delete file

After choosing the Delete file submenu, press the ⏮ / ⏭ buttons to select the file you want to delete and then press the MODE button to confirm. Press the ⏮ / ⏭ buttons to select "Yes" or "No". If you choose "Yes" and press the MODE button to confirm, the selected file will be deleted. If you choose "No", you will exit the delete file mode.



2.5.3 Delete all

After choosing the Delete all submenu, press the ⏮ / ⏭ buttons to select "Yes", and press the MODE button to confirm. If you choose "No", you will exit the Delete all mode.

2.5.4 Exit

Choose EXIT to return to music pause mode.

Note: No matter where you enter the MUSIC mode, you will always enter in stop mode and at the same stop point in the song as where you were before exiting.

3. Movie Mode

Select the Movie icon from the main menu using the ◀ / ▶ buttons. Press the MODE button to enter. Press the ◀ / ▶ buttons to choose video you desire and then press PLAY to watch. If you want to pause, press & hold the PLAY button and then press PLAY again to resume. If the video is paused, press the MODE button and you will find the following options:

Local folder; Delete file; Delete all; Exit and

Repeat

It is similar to music mode and includes the following repeat modes: Normal, Repeat One, Folder, Repeat Folder, Repeat All, Random and Intro.

Note: this device can only play videos in amv format. You must convert all other video formats including wmv, mp4, mov and mpeg etc, into amv before playing. A “**Media Player Software Utilities**” CD is included which will install the conversion program automatically onto your PC. For full details of the conversion procedures, please refer to the attached software quick instruction guide.

4. Record Mode

After turning the unit on, select the Record icon from the main menu using the ◀ / ▶ buttons. Press the MODE button to enter record standby mode. Before starting, we strongly recommend you fully charge up the battery for stable recording results. This unit allows 99 recording files to be stored in each directory. You just press the REC button directly to start the recording process.

When not recording, tap the MODE button to enter the record setting mode. The following options are present.



Local folder:

Press the ◀ / ▶ buttons to choose and then press the MODE button again to enter. Select the desired local folder using the ◀ / ▶ buttons and press the MODE button again to confirm.

Press the PLAY button to confirm the selected folder and the unit will return to Record feature and starts recording automatically.

Note: The recorded file will always begin with filename “REC001” and go up as you record more files, REC002, REC003, etc.

REC type:

After choosing the Record type submenu, press the ◀ / ▶ buttons to set the desired recording format. There are 4 different formats to choose from (see table below). Press the

MODE button to confirm.

Fine REC	In WAV format (good sound quality)
Long REC	In ACT format (average sound quality)
Fine VOR	In WAV format (good quality voice-controlled recording : recording will pause if no sound)
Long VOR	In ACT format (average quality voice-controlled recording : recording will pause if no sound)

Note on warning messages:

⚠ “Over Record” - It means there is no more room for new recording files. Please delete file(s) not to be kept to free up memory space.

⚠ “Catalog is Full” - It means there are already 99 recording files in the current folder. Please change to another folder.

Exit:

Choose EXIT to return to record standby mode.

After all settings are determined, press the PLAY button once to start recording. You can press “PLAY” at anytime to stop recording and then press “PLAY” again to resume. Press & hold the MODE button to stop recording and save the sound file.

5. VOICE mode

Select the Voice icon from the main menu using the ⏪ / ⏩ buttons. Press the MODE button to enter.

5.1 Press the PLAY button to start playing the current track.

5.2 While playing, press the PLAY button to pause and press again to resume.

5.3 To adjust the volume level, press the VOL button, and then use the ⏪ / ⏩ buttons for volume up/down adjustment. This unit has a built-in speaker that is active when the earbuds are not plugged in.

5.4 To skip to the previous or next track, use the ⏪ / ⏩ buttons. Press & hold the ⏪ / ⏩ buttons to search within the track.

5.5 While playing, tap the PLAY button and then by pressing & holding the MODE button, you will always return to the main menu.

5.1 Voice playing mode

When the recorded voice starts to play, tap the MODE button to enter the voice setting mode. The following options are present (similar to the Music Mode).

Repeat:

Is similar to music mode and includes the following repeat mode features: Normal, Repeat One, Folder, Repeat Folder, Repeat All, Random and Intro.

Tempo rate:

Press either **⏮** / **⏭** to set the rate of playing. There are 17 levels from -8 to +8 in which -8 is the lowest, +8 is the fastest and 0 means normal speed. Press the MODE button to confirm.

Replay:

Choose Replay by pressing the MODE button. Now "A" starts to blink on the screen. Press the **⏭** button to select the start point "A", then "B" will start to flash for end point selection. Press the **⏭** button to set the replay end point B. "A-B" stops flashing and now it automatically starts to replay the passage between markers A and B.

If you want to change the marker points for a new replay passage, just press **⏮** again, then "A" starts to flash and repeat above steps to complete.

Exit: exit from the submenu.

Note on warning message:

⚠ "Empty Disk!" - It means the player does not have any record files or all record files have been deleted.

🔔 **Attention: For WAV file play, this player swill only play WAV format files from this player. It will not play WAV files copied from a PC.**

5.2 Voice standby mode

When voice playback pauses, tap the MODE button to enter voice folder/file mode. The following options are available (similar to Music Mode).

Local folder; Delete file; Delete all and Exit

6. FM Radio

Select the FM Mode icon from the main menu using the **⏮** / **⏭** buttons. Press the MODE button to enter.

6.1 Manual Adjustment

Use the **⏮** / **⏭** buttons to step up or down the FM band in 100 kHz (0.1MHz) increments.

6.2 Auto station setting

- 6.2.1 Press & hold the **⏪** or **⏩** buttons to start auto scanning within the FM frequency band (87-108MHz);
- 6.2.2 When a strong station is received the tuning will stop and broadcast will be heard;
- 6.2.3 Press the MODE button and then select SAVE to store this station to the preset as Channel 1;
- 6.2.4 You can save up to 20 stations. Retrieve a preset station by pressing the PLAY button.

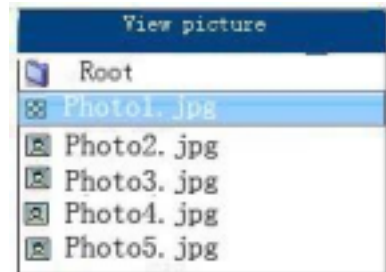
6.3 Further Options

Press the Mode button and you will access the following options:

- 6.3.1 Save: Save the present station to a preset channel location, starting from location 01 up to location 20.
- 6.3.2 Record: Record the content of present frequency/station, the display will switch to the RECORD mode but you can still listen to the radio during the record process. The record procedures remain unchanged, as mentioned in RECORD mode.
- 6.3.3 Delete
- 6.3.4 Delete All
- 6.3.5 Auto Search: It is as same as (5.2)
- 6.3.6 Normal Band: 87.0 to 108.0MHz (Commonly use in most countries)
- 6.3.7 Japan Band: 76.0 to 89.0MHz (use in Japan only)
- 6.3.8 Exit

7. Picture Browsing

Select the "View Picture" icon from the main menu using the **⏪** / **⏩** buttons. Press the MODE button to enter. You can browse a folder that contains pictures you have saved. Select a file and press PLAY to view the picture. Pictures in JPEG, GIF and BMP format can be viewed. From within the same folder, press the MODE button once, and the following options will be available (similar to Music Mode).



Local folder; Delete file; Delete all; Exit and

Play Set:

When viewing a picture, press **⏩** to view the next photo, or choose Play Set from this sub-menu to choose to play a set of pictures in a specific folder automatically or manually. You need to set the viewing time (1-10s) for each picture if "Auto Play" is chosen.

8. System Setting

Select the "Sys Set" icon from the main menu using the **⏪** / **⏩** buttons. Press the MODE button to enter.

Use ◀ or ▶ to select the setting option and tap the MODE button to confirm.
Press and hold the MODE button to return to the main menu.

8.1 Date and Time

Tap the VOL button to select the year, month, date, hour, minute or second and then use ◀ / ▶ buttons to modify the selection.
Finally, press the MODE button to confirm the setting and exit from the system time menu.

IMPORTANT: The date will revert to 2008-05-01 when you switch the main POWER On/Off to "OFF". Be sure to setup the System Time again before making future live recordings after switching off the main power.



8.2 LCD Setting

Set a fixed period of time (in seconds) for the screen to turn off if no button operations are performed. If "0" is selected the backlight will remain on. Press the MODE button to enter "Black Screen Time" and select the LCD OFF time using the ◀ / ▶ buttons to modify it.

8.3 Language setting

You are able to choose the user interface language in this mode.

After selecting the Language submenu, press the MODE button to enter. Use ◀ or ▶ to select the desired language from the list and press the MODE button to confirm.

19 different languages are available: Simplified Chinese, *English (default)*, Traditional Chinese, Japanese, Korean, German, French, Italian, Spanish, Swedish, Czech, Dutch, Portuguese, Danish, Polish, Russian, Thai, Turkish and Hebrew are available.

8.4 Power Saving

There are two options: Off time and Sleep time.

Off time: Is if no operation is performed or buttons are pressed during the chosen period of time, the system will go into sleep mode automatically. Choose from 0-60 seconds. If "0" is selected, the unit will remain on and not turn off automatically.

Sleep time: Is after playing for the chosen period of time, the system will automatically go into sleep mode. Choose from 0-120 minutes. If "0" is selected, the unit will remain on and not turn off automatically.

Note: Sleep mode is only available once when it has been set. The system will delete the setting automatically after it has expired. If you want to use this function again, repeat the steps above to reset the Sleep Time.

8.5 Replay mode

There are two options: Manual replay and Auto replay.

Manual replay: When using the A-B repeat function, it cannot be set automatically.

Auto replay: Is used for language learning. The system will pause between the first sentence and the second sentence automatically.

8.6 Online mode

Multi driver: User can see the Normal section and Encrypted section of the device memory on your computer.

Normal only: Only the Normal section of the device memory will be shown on your computer.

Encrypted only: only the Encrypted section of the device memory will be shown on your computer. To understand the difference between normal and encrypted drives please refer to part 4 of "Media Player Software Utilities" quick start guide.

8.7 Memory info

Choose this feature to check the usable memory available in the following format:

Usable memory in MB <percentage of memory used>

8.8 Firmware (FW) version:

Choose this to show the current software version of the unit.

8.9 Exit

9. Electronic Book

Select the "ebook" icon from the main menu using the ◀ / ▶ buttons.

Press the MODE button to enter.

Use the ◀ / ▶ buttons to select the Text file (in .txt format) and tap the



PLAY button to confirm.

Use the ⏮ / ⏭ buttons to choose the page you want to read from the text file.

Pressing PLAY will take you back to the “ebook” folder. Press & hold the MODE button will take you back to the main menu.

In the same folder, press the MODE button once, and the following options are available (similar to Music Mode): **Local folder**; **Play Set**; **Delete file**; **Delete all** and **Exit**

10. Download/ Upload File

To download music to the player, connect the player to your computer first, then:

10.1 Select the track you want to download to the player by clicking on the icon.

(If you want to choose more than one song, press and hold the Ctrl or Shift button on the computer keyboard when selecting.)

10.2 Right-click on the files, a menu appears, click “Copy”.

10.3 Connect the player to PC by USB cord and the Removable Disk window appears.

10.4 Choose “Open folder to view files”, then right-click on the Removable Disk window and click “Paste” in the menu.

10.5 When uploading a file from the player to the PC, just follow the similar procedure (1) to (4)

10.6 When downloading or uploading files, the LCD screen shows:



Connected Status

Uploading

Downloading

10.7. Unplug the USB cord from PC after the upload or download has finished.

Media Player Software Utilities

The CD included in the package contains the following programs:

IMPORTANT: The Media Player Software Utilities are compatible with Windows Operating Systems only. Mac operating systems are not compatible.

1. ACT to WAV conversion

You can convert the recorded ACT file to WAV format so it can be played with Windows Media

Player or another audio software program or device. The procedures are as follows:

- 1.1 Connect the player to your PC;
- 1.2 From your PC, choose the folder “MP3 Player Utilities” and then select “Media Manager”.
- 1.3 A window appears and a list of audio files inside the player will be displayed.
- 1.4 Left click on the ACT file you want to convert, right click and choose “Convert to WAV”, the file will be converted to WAV format automatically.

2. AMV file conversion

This device will play video files saved in AMV format only. Please refer to the instruction guide on the included CD for installation and working procedures.

3. Audio/Video player on PC

You can play the audio/video files (MP3, WMA, WUV, WAV, ACT and AMV format) via the audio/video player on your PC. The procedures are as follows:

For audio files

- 3.1 Install the driver from the CD onto your PC, choose folder “MP3 Player Utilities” and then select “Media Manager”.
- 3.2 A window appears and no audio file will be displayed in the list.
- 3.3 Choose “Add File”, and add audio files to the list. You can also connect your player to a PC and the audio files from the player will also be displayed in the list.
- 3.4 Click to select the audio file that you want to listen to. Click the PLAY button.

For video files

- 3.5 Choose “AMV player” from the folder “MP3 Player Utilities”.
- 3.6 Click the “Add file” icon to choose the video files (in AMV format) you want to watch.
- 3.7 Press the “Play” button to play the video file.



4. Drive Encryption

This device has 2 memory drives, one is normal and the other one is encrypted which requires a password to access. The encryption procedures are as follows:

- 4.1 Connect the device to a PC via the USB cord.
- 4.2 Install the driver from the CD onto your PC, choose the “MP3 Player Utilities” and then “MP3 Player Disk Tool”.
- 4.3 A window will appear, please choose “Separate and Encrypt”
- 4.4 Choose the size for the encrypted drive, input the username and password. Press START to confirm and you will need to restart your PC to activate this setting.

4.5 Connect the device to the PC to upload/download files, 2 windows will appear simultaneously (If Sys Set/Online Mode/Multi Drive is chosen), one is for normal drive and the other is for the encrypted drive.

4.6 Double click the file "RdiskDecrypt.exe" in the window of Encrypted drive. Input the username and password, then you can enter the drive and upload/download files as usual.

Troubleshooting

Problems	Possible Solutions
Unit does not turn on	Make sure Power Switch is set to on.
No display when I turn on the unit.	The battery may be exhausted. Please connect the player to your computer USB port for recharging. Try to restart it 10 minutes later. It takes about 3 hours to fully recharge an exhausted battery.
No sound coming from the earbuds or speaker	Make sure the volume is not set to zero and check out the connection between earbuds and the unit. MP3 files may be corrupted. Please download from your computer again.
System Time always reverts to default setting	Try not to set POWER On/Off switch to "Off". Set unit to sleep mode by pressing PLAY button instead.
Strange Characters Displayed on the Screen	Check that the correct display language was chosen.
Unable to Download Music	Make sure the USB connection to your computer is good and the connecting cable is not broken. Make sure memory space of your player is not full.
Unusual font on the screen	Make sure the correct language is chosen.

Specification

Dimensions	2.44" x 1.84" x 0.56"
Weight	51.5g
Power	Built-in Li-ion Rechargeable battery DC 3.7V
Display Screen	2" TFT color display
Connection With Computer	USB 2.0
Memory	Flash Memory 2GB
Playing Time	About 7.5 hours using earbuds; 2.5 hours using built-in speaker
Music Format	MP1, MP2, MP3, WMA and WAV
19 User Interface Languages	Simplified Chinese, Traditional Chinese, <i>English (default)</i> , Japanese, Korean, German, French, Italian, Spanish, Swedish, Czech, Dutch, Portuguese, Danish, Polish, Russian, Thai, Turkish and Hebrew
Operation Systems Supported	1. Windows ME / 2000 / XP/ Vista; included software for Windows operating systems only. 2. Plug and play for Mac OS9 or above

SERVICE

Please refer to the instructions on the enclosed warranty card for returning your unit for service.

Distributed by:

Spectra Merchandising International, Inc.

Chicago Industry Tech Park

4230 North Normandy Avenue

Chicago, IL60634, U.S.A.

Please have model number ready, for Customer Service, call 1-800-7777-5331

Printed in China

Free Manuals Download Website

<http://myh66.com>

<http://usermanuals.us>

<http://www.somanuals.com>

<http://www.4manuals.cc>

<http://www.manual-lib.com>

<http://www.404manual.com>

<http://www.luxmanual.com>

<http://aubethermostatmanual.com>

Golf course search by state

<http://golfingnear.com>

Email search by domain

<http://emailbydomain.com>

Auto manuals search

<http://auto.somanuals.com>

TV manuals search

<http://tv.somanuals.com>