



DESIGNED TO MOVE [YOU][™]

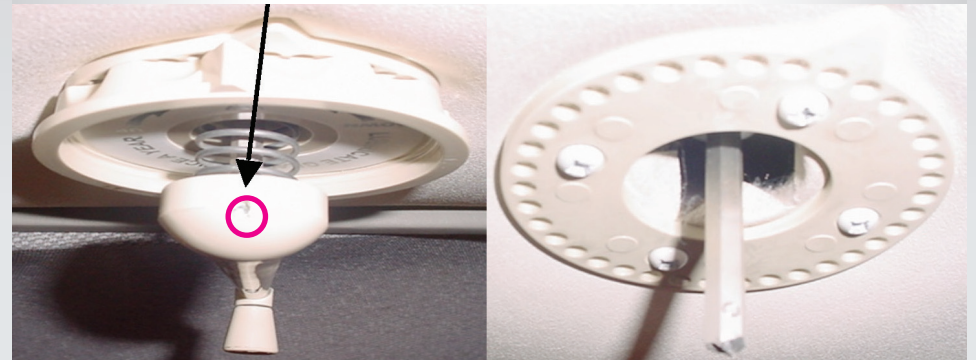
www.JensenRVDirect.com

ANHD20RTL12 INSTALLATION GUIDE

TOOLS & SUPPLIES

- 1 Drill or Battery Driver with a #2 Philips bit
- 2 Putty Knife
- 3 3/32" Allen wrench
- 4 Electrical Tape
- 5 Exterior Roof Sealant (Non-hardening type)

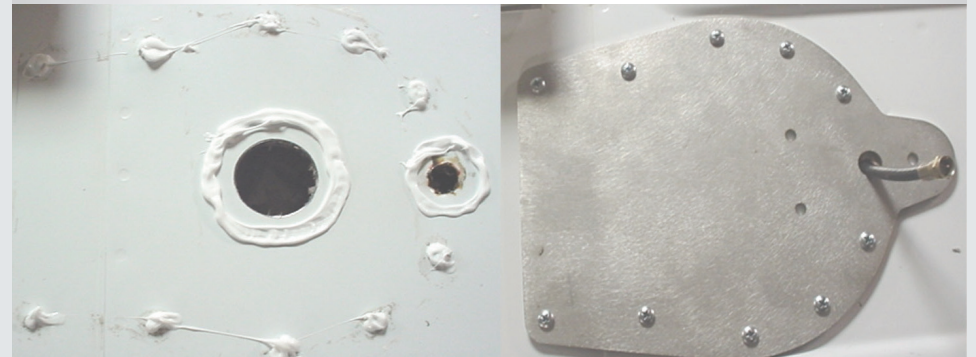
- 1 Crank existing antenna to full elevation.
- 2 Remove **3/32" set screw** from crank. Remove crank, spring, directional handle, & 4 screws.



- 3 Remove sealant & screws from base, remove antenna and clean surface



- 4 Apply sealant to all holes & attach exterior plate using the included hardware



5 Apply sealant to holes and attach base using the included hardware.



6 Apply sealant to 3 screws, fill coax hole, connect coax to antenna and wrap connection with insulating electrical tape. Coax connection should be located inside vertical stalk of antenna for service.



7 Attach antenna to base and seal all seams and screws on plate and antenna base.



8 Install interior plate using included hardware over hole in ceiling.



9 Remove plate from wall and disconnect all wires and cables (note power/ground polarity & cable labels).



10 Connect appropriate cables / wires and install new plate. Tape all coax connections.



ASAelectronics
THE MOBILE ELECTRONICS COMPANY SINCE 1977
ASA ELECTRONICS CORPORATION
www.jensenvrdirect.com
www.asaelectronics.com

© 2010 ASA Electronics Corporation

Refer to the ANHD20
Installation/Operation for
additional installation details.

Free Manuals Download Website

<http://myh66.com>

<http://usermanuals.us>

<http://www.somanuals.com>

<http://www.4manuals.cc>

<http://www.manual-lib.com>

<http://www.404manual.com>

<http://www.luxmanual.com>

<http://aubethermostatmanual.com>

Golf course search by state

<http://golfingnear.com>

Email search by domain

<http://emailbydomain.com>

Auto manuals search

<http://auto.somanuals.com>

TV manuals search

<http://tv.somanuals.com>