



JOHN DEERE

5 9 N E T H O R S E P O W E R

J

LOADER

244J



Big productivity in a compact package.



Want a compact machine with super-sized features? Step up to the tight-turning, heavy-lifting 244J Loader. This versatile machine combines best-in-class maneuverability, travel speed, breakout force, reach, and stability — letting it tackle tasks that other machines can't. Oscillating stereo steering delivers a smooth-turning radius that's 20-percent

tighter than comparable loaders — for faster cycle times and less material spillage. Add to that a faster maximum travel speed, more comfortable cab with enhanced comfort and visibility, and standard return-to-dig function, and the 244J delivers big-time stability, performance, and operator comfort in one compact package.



244J Loader key specifications

Operating Weight	11,552 lb.
Net Horsepower	59 hp
Pin Height	126 in.
Full Turn Tip Load	7,718 lb.
Bucket Size	1.0 cu. yd.
Bucket Breakout Force	10,792 lb.

Unique stereo steering makes this compact loader even more productive, for tight turns and extra agility in close quarters.

Optional Worksite Pro™ skid-steer-style coupler lets you utilize many of the same attachments used on skid steers.

244J's big breakout forces, high dump clearance, and generous lift capacities make it the perfect machine for a wide variety of work.

Two-range hydrostatic drivetrain delivers an infinite travel speed from 0 to 19 mph. The inching pedal further fine-tunes control.

Interim Tier 4-certified John Deere turbocharged diesel delivers power without compromise in all conditions.

Extended service intervals help maximize uptime.

Unlike comparable-size machines, return-to-dig is standard.

Oscillating stereo steering combines machine articulation and rear-axle steering, giving the 244J the tightest turn radius in its class.

18-inch tires are standard.



1



2



3



4



5

1. Boom float allows easy backdragging for finish grading and cleaning up jobsites.
2. An oscillating rear axle and elastic articulation at the pivot smooth the ride for greater material retention and reduced operator fatigue.
3. Manual low-speed differential lock delivers the traction needed to go deeper into the pile for bigger bucket loads.
4. 244J's long reach lets it easily dump to the center of tandem-axle trucks for quicker and easier loading.
5. The 244J's unique design turns tight but articulates less, keeping the center of gravity and ballast in line to counteract load forces — for superior full-turn tipping load capacity.





Run in some pretty tight circles.

Navigating crowded jobsites often isn't easy. While most machines are forced into three-point turns (or worse), the 244J's oscillating stereo steering allows a tight 148-inch turn radius for unsurpassed maneuverability. Delivers higher tipping load capacities, too. What's more, the hydrostatic drivetrain's

infinitely variable range lets you precisely match travel speed to the work at hand. So you can inch ahead while maintaining full hydraulic power. Or max out at a fastest-in-class 19 mph. Lets you move more materials, more quickly and more efficiently. Without running you ragged.



Easy to get in. Easy to get working.

Climb aboard the 244J and you'll see why this machine takes a back seat to nothing. Its spacious sound-suppressed cab provides ample headroom, best-in-class all-around visibility, and much more. A single lever with FNR switch controls all boom and bucket functions, and

standard return-to-dig is just a flick-of-the-wrist away. Gauges in the forward console are clearly visible, intuitive, and easy to read. Tilt steering, multi-adjustable high-back suspension seat, electronic monitor, and many more productivity-boosting features are also standard.



Inching/brake pedal lets you slow travel speed while keeping engine rpm high for optimum hydraulic response and control.

Interior and exterior convex mirrors further enhance the 244J's best-in-class visibility.

Opt for the highly efficient HVAC system and make your operator even more productive. Automotive-type louvers help keep the view clear, the cab comfortable.



1

1. Walk-through cab lets you enter or exit easily from either side.

2. Boom and bucket control, FNR, and differential lock are on the same low-effort lever for convenient single-handed control.

3. Easy-to-read monitor tracks rpm, hours, engine oil pressure, and more. Issues both visible and audible warnings.

4. Low- and high-speed ranges provide infinitely variable travel speeds from standstill to a best-in-class 19 mph.

5. Oscillating axle/elastic articulation reduces cab tilt by as much as 50 percent, for a smoother ride that's easier on both machine and operator.



2



3



5



4

Change hydraulic flow with a twist of your wrist.

Unobstructed line of sight to attachments makes switchover quick and easy.

The optional fourth-function valve delivers plenty of flow for running hydraulic-driven attachments like power rakes and augers.



1



2



3



4



5



6

1. If you change attachments often, you'll appreciate the hydraulic-actuated skid-steer-style coupler that lets you attach and release attachments quickly, without tools or leaving the seat.

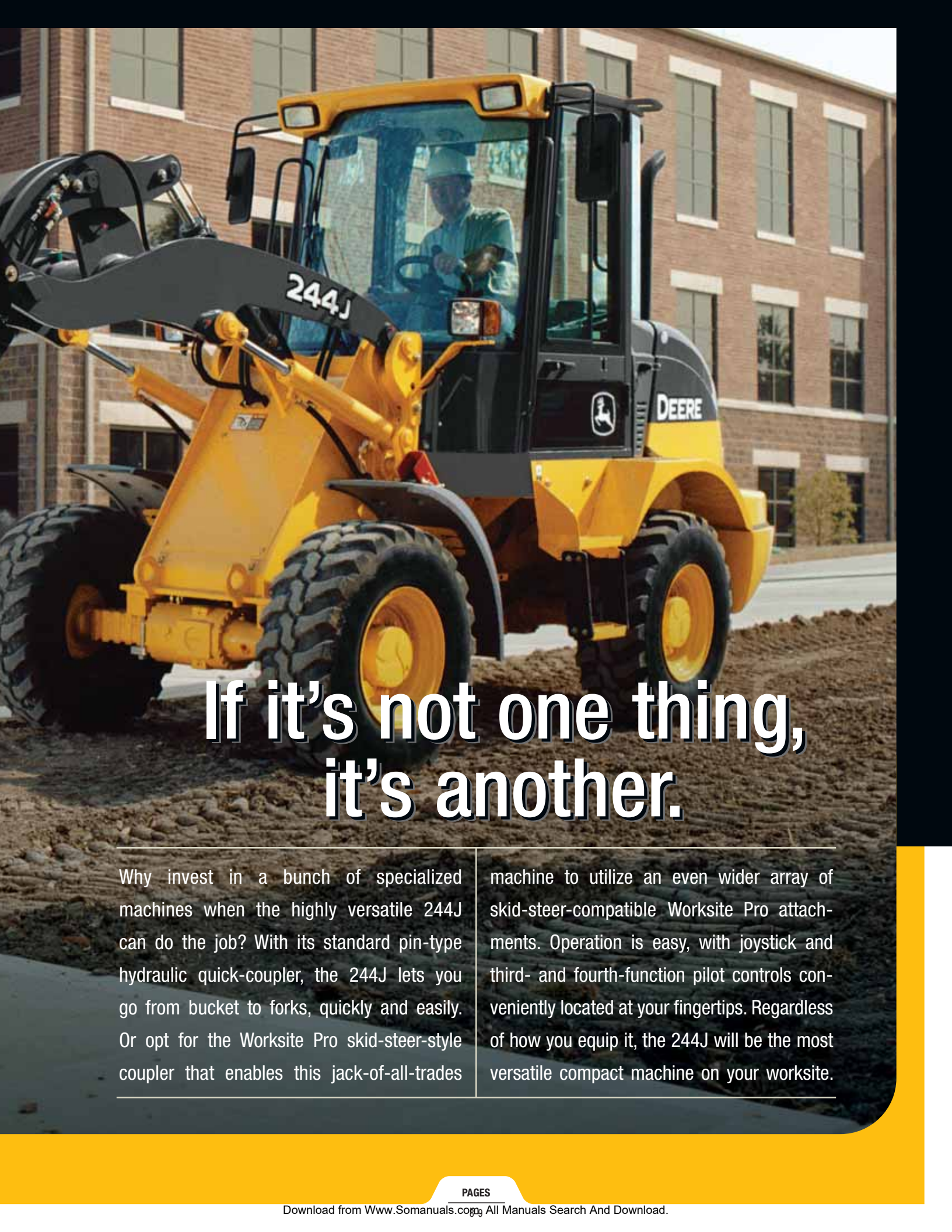
Attachments shown:

2. Utility/snow blade
3. Scrap grapple
4. Utility bucket
5. Bale spear
6. Pallet fork

Available attachments:

- Power rakes
- Utility/snow blades
- Augers
- Bale spears
- Construction or utility buckets
- Tooth buckets
- Pallet forks
- Scrap and brush-tined grapples
- Pick-up brooms





If it's not one thing, it's another.

Why invest in a bunch of specialized machines when the highly versatile 244J can do the job? With its standard pin-type hydraulic quick-coupler, the 244J lets you go from bucket to forks, quickly and easily. Or opt for the Worksite Pro skid-steer-style coupler that enables this jack-of-all-trades

machine to utilize an even wider array of skid-steer-compatible Worksite Pro attachments. Operation is easy, with joystick and third- and fourth-function pilot controls conveniently located at your fingertips. Regardless of how you equip it, the 244J will be the most versatile compact machine on your worksite.

Ready to work wherever and whenever you are.

More often than not, it's the weather and countless other unplanned interruptions that make the difference between a job well done and a job gone wrong. Improve your chances for success with the small-but-serious 244J. Incorporating many of the same durability features found on our larger loaders, it's built to keep downtime down

with sealed electrical connectors, flat-face O-ring-seal hydraulic couplings, and self-adjusting wet-disc brakes, to list just a few. The 244J will help keep your operator out of harm's way, too, with numerous safety features such as an automatic park brake, bypass-start protection, slip-resistant steps, and convenient handholds.



Wet-disc brakes in the heavy-duty axles self-adjust and are sealed from moisture and contaminants for long, trouble-free life.

Proportional fan runs only as needed to provide optimal cooling — for reduced wear and tear on cooling components.

Turbocharged Deere PowerTech™ diesel runs quiet and is certified to EPA interim Tier 4 emissions regulations so it can work where rigid sound- and air-quality regulations exist.

Access to the hydraulic loader valve, differential lock, optional ride control, and other components is quick and convenient.



1. Remote test ports enable technicians to quickly troubleshoot problems.



2. Steering linkage is positioned where it's protected and supported by brackets with easily replaceable wear strips.



3. Angled self-cleaning steps and ergonomically positioned grab bars make getting in and out of the cab easier.

4. A/C condenser tilts out and away from the radiator for easier clean-out. Doesn't require draining fluids or disconnecting hoses.



5. Wear-resistant hoses are routed where they're protected. Heavy-duty articulation joints are strong and durable.

Fuel-efficient Tier 4 emission-certified John Deere diesel runs 500 hours between changes. Hydraulic valve lifters and serpentine belt never require adjustment.

Remote lube bank puts rear axle zerks within easy reach. Convenient maintenance chart helps ensure that nothing gets overlooked.

Locking fuel cap and electrical disconnect switch help prevent theft or vandalism.

Easily accessible maintenance-free batteries are connected in parallel for reliable electrical power.

Easy-lift hood and transverse-mounted engine provide convenient ground-level access to daily checkpoints.



Here's the lowdown on daily operating costs.

We spared no expense to help keep the 244J's operating costs low. From the transverse-mounted John Deere diesel that provides convenient ground-level service access, to easy-to-change vertical spin-on filters, this versatile loader will

require less of your time or attention. Extended service intervals, environmentally friendly drains, sight gauges — the list of J-Series features that help minimize maintenance goes on and on. And so will the daily operating cost savings you'll enjoy.

1. Hydraulically driven fan runs only as needed for efficient cooling, reduced noise, and lower fuel consumption.

2. Easy-access fuse panel accommodates quick checks and changes.

3. Electronic control unit lets service technicians easily retrieve vital operating information and helps diagnose problems more quickly.

4. Hydraulic fluid sight gauge and see-through coolant reservoir let you check fluid levels at a glance.

5. Easy-access vertical spin-on filters and environmental drains make fluid changes quicker and cleaner.

6. Nobody backs you better than the 1,100-plus John Deere CWP dealers throughout North America.



Specifications



Engine 244J

Manufacturer and Model	John Deere PowerTech™ 4024T
Non-Road Emission Standards	certified to EPA interim Tier 4 emissions
Cylinders	4
Valves per Cylinder	2
Displacement	147 cu. in. (2.4 L)
Net Rated Power @ 2,800 rpm, SAE	59 hp (44 kW)
Net Peak Power @ 2,600 rpm, SAE	62 hp (46 kW)
Maximum Net Torque @ 1,600 rpm	163 lb.-ft. (222 Nm)
Lubrication	pressure system with full-flow spin-on filter
Fuel System	electronically controlled unit injection pump
Aspiration	turbocharged
Air Cleaner	dual safety element dry type

Cooling

Hydraulically driven, proportionally controlled fan	
Engine Coolant Rating	-34 deg. F (-37 deg. C)

Powertrain

Hydrostatic (HST) with infinitely variable speed control over full range of operating speeds; two speed ranges; joystick-mounted F-N-R; acceleration pedal; HST inching pedal, which allows infinitely reduced travel speeds while maintaining full engine rpm and hydraulic flow	
Two Travel Speeds In Forward and Reverse (equipped with 365/70R18 tires)	
Gear 1	4.3 mph (6.9 km/h)
Gear 2	18.6 mph (29.9 km/h)
Axles	rear center-pivot axle with 10-deg. rear axle oscillation and 10-deg. frame oscillation
Rear Axle Oscillation Versus Front Axle	20 deg. total, stop to stop
Differentials	manual (push-button) locking front, conventional rear
Maximum Rise and Fall, Single Wheel	10 in. (254 mm)
Steering	hydraulic power steering (SAE J1511); 30-deg. articulation left and right with mechanical actuated rear-wheel steer emergency steering system; 26-deg. rear-wheel steering tied mechanically to articulation; equivalent of 97-deg. conventional steering system articulation
Articulation Angle	56-deg. arc (28 deg. each direction)
Final Drive	heavy-duty outboard planetary
Brakes (SAE J1473 and ISO 3450)	
Service Brakes	hydraulically actuated, self-adjusting internal wet-disc brake and driveline drum brake
Parking Brake	automatically spring-applied, hydraulically released, internal wet disc

Hydraulics

Main Pump (loader and steering)	fixed-displacement gear pump; open-center system
Maximum Rated Flow @ 1,000 psi (6895 kPa)	17 gpm (64 L/m)
System Relief Pressure	
Loader	3,190 psi (21 994 kPa)
Steering	2,611 psi (18 002 kPa)
Hydraulic Cycle Times	
Raise	4.9 sec.
Dump	1.4 sec.
Lower	
Float Down	4.0 sec.
Power Down	3.6 sec.
Total	9.9 sec.
Maximum Lift Capacity	with 1.0-cu.-yd. (0.8 m ³) bucket with bolt-on cutting edge
Lift at Ground Level	9,892 lb. (4491 kg)
Lift at Maximum Height	6,407 lb. (2909 kg)
Turning Radius	
Measured to Centerline of Outside Tire	11 ft. 6 in. (3.51 m)
Controls	pilot-operated, 3-function valve with single-lever control for boom and bucket, and auxiliary level for standard pin disconnect and auxiliary hydraulics, with control-lever lockout feature; optional additional 4-function valve with push-button control

Electrical

244J

Electrical load center with blade-type multi-fused circuits	
Voltage	12 volt
Battery Capacity	1,700 CCA
Reserve Capacity	160 min.
Alternator Rating	65 amp
Lights (SAE 99)	driving/front working lights (2), turn signals, flashers, stop- and taillights

Tires/Wheels

	<i>Tread Width</i>	<i>Width Over Tires</i>	<i>Change In Vertical Height</i>
Standard-Size, 365/70R18 Tires on			
Single-Piece Rims	58.5 in. (1486 mm)	72.8 in. (1849 mm)	0 in. (0 mm)
400/70R20 (optional)	57.9 in. (1471 mm)	74.2 in. (1885 mm)	+ 1.9 in. (+ 48 mm)

Serviceability

Refill Capacities

Cooling System (engine and radiator)	10.6 qt. (10.0 L)
Differential and Planetary Axle	
Front	4.2 qt. (4.0 L)
Rear	4.3 qt. (4.1 L)
Engine Oil with Filter	9.0 qt. (9.0 L)
Fuel Tank	21.5 gal. (81.0 L)
Hydraulic/Hydrostatic Reservoir with	
Filter	16.0 gal. (61.0 L)
Hydrostatic Motor Gearbox	0.8 qt. (0.8 L)
Front/Rear Axle Planetary Hubs (each)	1.0 qt. (0.9 L)

Operating Weights

With standard equipment, 365/70R18 tires, standard counterweight, cab, 175-lb. (79 kg) operator, and full fuel tank

With Quick-Coupler and 1.0-cu.-yd. (0.8 m ³) Stockpiling/General-Purpose Bucket with Bolt-On Edge	11,552 lb. (5240 kg)
With Quick-Coupler and 1.4-cu.-yd. (1.1 m ³) Stockpiling/General-Purpose Bucket with Bolt-On Edge	11,817 lb. (5360 kg)
With Quick-Coupler and Fork	11,398 lb. (5170 kg)

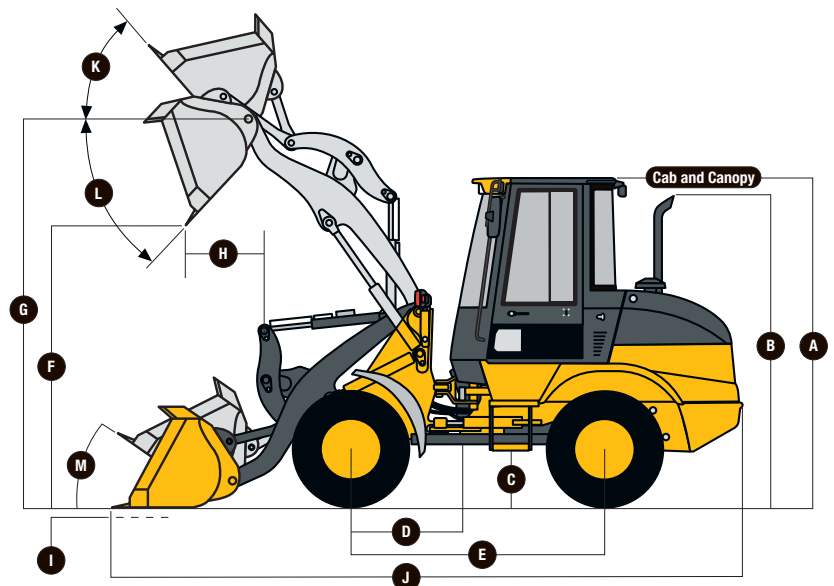
Optional Components

Bucket, 1.0 cu. yd. (0.8 m ³)	736 lb. (334 kg)
Bucket, 1.4 cu. yd. (1.1 m ³)	946 lb. (429 kg)

Machine Dimensions

DIMENSIONS WITH QUICK-COUPLER AND BUCKET

A Height to Top of Cab	8 ft. 11 in. (2.72 m)
B Height to Top of Exhaust	8 ft. 6 in. (2.59 m)
C Ground Clearance	11.6 in. (295 mm)
D Length from Centerline of Front Axle	29.5 in. (749 mm)
E Wheelbase	7 ft. 1 in. (2.15 m)
F Dump Clearance, 42-deg. Full Height	▲ (see page 16)
G Height to Hinge Pin, Fully Raised	10 ft. 6 in. (3.20 m)
H Dump Reach, 42-deg., 7-ft. (2.13 m) Clearance	▲▲ (see page 16)
I Maximum Digging Depth	3.1 in. (79 mm)
J Overall Length	▲▲▲ (see page 16)
K Maximum Rollback at Full Height	52 deg.
L Bucket Dump at Full Height	42 deg.
M Maximum Rollback at Ground Level	39 deg.

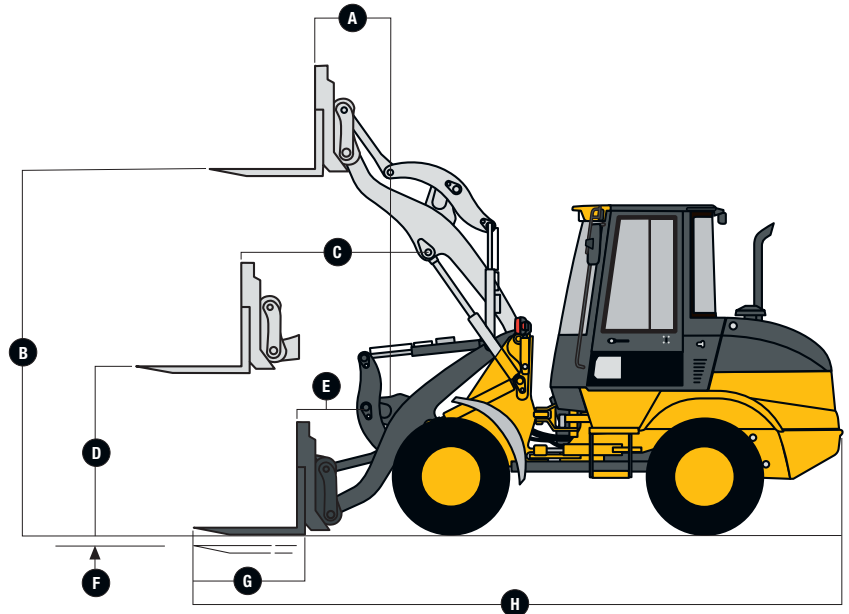


Machine Dimensions (continued)

244J

DIMENSIONS WITH QUICK-COUPLER AND FORK

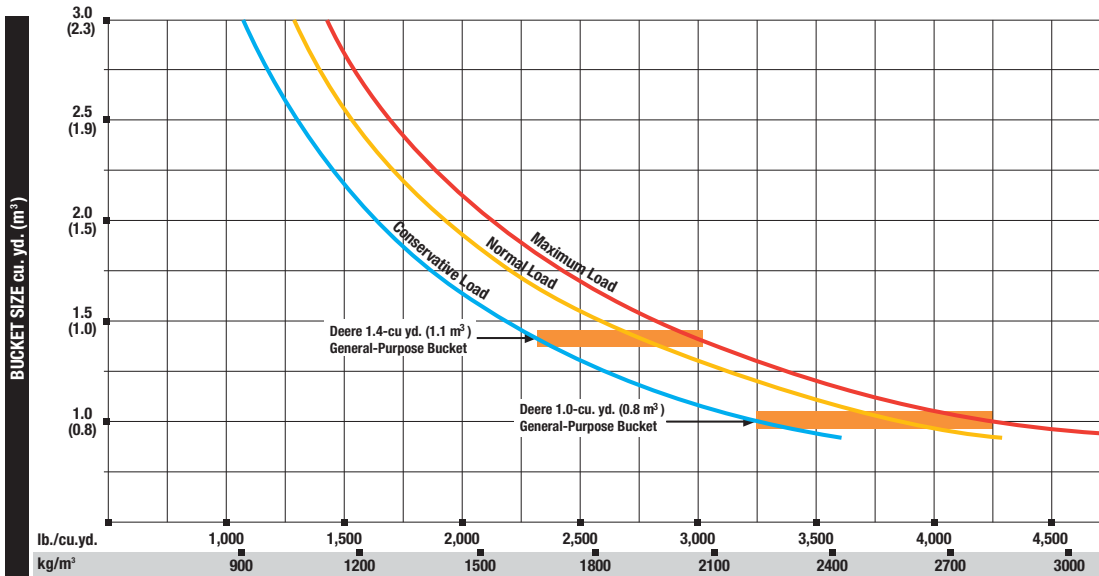
- A** Reach, Fully Raised21.7 in. (551 mm)
 - B** Fork Height, Fully Raised10 ft. 0 in. (3.04 m)
 - C** Maximum Reach, Fork Level4 ft. 2 in. (1.26 m)
 - D** Fork Height, Maximum Reach4 ft. 9 in. (1.45 m)
 - E** Reach, Ground Level29 in. (742 mm)
 - F** Depth Below Ground2 in. (51 mm)
 - G** Tine Length3 ft. 11 in. (1.20 m)
 - H** Overall Length19 ft. 0 in. (5.79 m)
- Tipping Load as Measured with Fork Level,
Load Centered on Tine
- Straight6,404 lb. (2905 kg)
 - Full Turn5,846 lb. (2652 kg)



Standard Z-Bar Pin-On Bucket

Bucket Type/Size	<i>Stockpiling/General Purpose w/Bolt-on Edge</i>	<i>Stockpiling/General Purpose w/Bolt-on Edge</i>
Capacity, Heaped SAE	1.0 cu. yd. (0.8 m ³)	1.4 cu. yd. (1.1 m ³)
Capacity, Struck SAE	0.86 cu. yd. (0.7 m ³)	1.18 cu. yd. (0.9 m ³)
Bucket Width	6 ft. 3 in. (1.9 m)	7 ft. 3 in. (2.2 m)
Breakout Force, SAE J732C	10,792 lb. (4895 kg)	9,722 lb. (4410 kg)
Tipping Load, Straight	8,457 lb. (3836 kg)	8,347 lb. (3786 kg)
Tipping Load, Full Turn, SAE	7,718 lb. (3501 kg)	7,617 lb. (3455 kg)
▲▲ Reach, 42-Deg. Dump, 7-ft. (2.13 m)		
Clearance	3 ft. 10 in. (1.17 m)	3 ft. 11 in. (1.19 m)
▲▲ Reach, 42-Deg. Dump, Full Height	32.2 in. (818 mm)	34.0 in. (864 mm)
▲ Dump Clearance, 42 Deg., Full Height	8 ft. 4 in. (2.55 m)	8 ft. 3 in. (2.51 m)
▲▲▲ Overall Length, Bucket on Ground	17 ft. 4 in. (5.28 m)	17 ft. 2 in. (5.23 m)
Loader Clearance Circle, Bucket Carry Position	24 ft. 3 in. (7.38 m)	24 ft. 10 in. (7.57 m)

Loader operating information is based on machine with standard equipment, 365/70R18 tires, standard counterweight, cab, 175-lb. (79 kg) operator, and full fuel tank. This information is affected by tire size, ballast, and different attachments.



LOOSE MATERIALS	lb./cu. yd.	kg/m ³
Chips, pulpwood	486	288
Cinders (coal, ashes, clinkers)	1,134	673
Clay and gravel, dry	2,700	1602
Clay, compact, solid	2,943	1746
Clay, dry in lump loose	1,701	1009
Clay, excavated in water	2,160	1282
Coal, anthracite, broken, loose	1,458	865
Coal, bituminous, moderately wet	1,350	801
Earth, common loam, dry	2,052	1218
Earth, mud, packed	3,105	1843
Granite, broken	2,592	1538
Gypsum	3,834	2275
Limestone, coarse, sized	2,646	1570
Limestone, mixed sizes	2,835	1682
Limestone, pulverized or crushed	2,295	1362
Sand, damp	3,510	2083
Sand, dry	2,970	1762
Sand, voids, full of water	3,510	2083
Sandstone, quarried	2,214	1314
Shale, broken crushed	2,295	1362
Slag, furnace granulated	3,294	1955
Stone or gravel, 1-1/2" to 3-1/2" size	2,430	1442
Stone or gravel, 3/4" size	2,700	1602

*This guide, representing bucket sizes not necessarily manufactured by Deere, will help you in selecting proper bucket size for material density, loader configuration, and operating conditions. Optimum bucket size is determined after adding or subtracting all tipping load changes due to optional equipment. The "conservative load" line on this guide is recommended when operating in conditions such as soft ground and uneven surfaces. The "maximum load" condition on this guide is sometimes utilized when operating on firm ground and level surfaces.

244J LOADER

Key: ● Standard equipment ▲ Optional or special equipment

*See your John Deere dealer for further information.

244J Engine

- Certified to EPA interim Tier 4 emissions
- Antifreeze, -34°F (-37°C)
- Coolant recovery tank
- Fan safety guard
- Fan, suction type, hydraulically driven, proportional speed
- Muffler, under hood with curved end exhaust stack
- Environmentally friendly engine oil drain
- Spin-on engine oil and fuel filter
- Engine oil cooler
- Quick-release fuel filter and water separator
- Under-hood dual-element air cleaner with restriction indicator
- Above-hood prescreened air intake with dust evacuator valve
- Serpentine drive belt with automatic tensioner
- ▲ Engine coolant heater, 750 watts, 110 volts
- ▲ Special application: Trash screens, etc.*

Electrical

- Starter switch with electric fuel cutoff
- 12-volt system
- Electrical load center with blade-type fuses
- Standard batteries (2), 12 volt with 1,700 CCA
- Master electrical disconnect switch
- Alternator, 12 volts, 65 amps
- Horn (conforms to SAE J994, J1446)
- Lights (conform to SAE 99): Driving / Front working (2) / Turn signals / Flashers / Stop / Taillights
- Pre-wired for rear worklights
- ▲ Worklights, rear (2)
- Reverse warning alarm (conforms to SAE J994, J1446)
- Multifunction monitor with audible and visual warnings: Low engine oil pressure / Engine coolant temperature / HST transmission oil temperature / Parking brake indicator / Gauges and indicators: Engine coolant temperature, fuel level, speedometer, clock, and hour meter
- Indicator lights: Engine air filter / Fasten seat belt / Parking brake actuated / Forward/reverse travel / 1st or 2nd speed range / Turn signal and hazard lights / High-beam indicator / Battery voltage

244J Electrical (continued)

- Radio-ready cab, fused 12-volt radio electrical lead and speakers, power port
 - By-pass starter safety cover on starter, positive terminal battery cover
 - Pre-wired for roof beacon
 - Sealed external electrical connectors
- ### Powertrain/Brakes
- Hydrostatic (HST) transmission: Electric shift control / Single-lever joystick F-N-R / Hydrostatic oil cooler / Inching pedal / Two speeds forward and reverse / Infinitely variable speed control
 - Service brakes, hydraulically actuated, self-adjusting internal wet-disk brake and driveline drum brake
 - Parking brake, spring applied, hydraulically released, switch operated
 - Axles, manual locking front and conventional rear differentials, heavy-duty outboard planetaries

Hydraulic System

- Hydraulic system oil cooler
- Automatic bucket return-to-dig control
- Boom float function
- Reservoir sight gauge for hydraulic/hydrostatic oil
- Fine-micron hydraulic filter, vertical mounting
- Hydraulic lever lockout
- Pilot-operated three-function valve with single joystick lever control for boom and bucket, and auxiliary lever for standard pin disconnect and auxiliary hydraulics
- ▲ Four-function hydraulic valve with pilot joystick control and pilot auxiliary lever for third function, and push buttons for fourth function
- ▲ Hydraulic conversion kits, four-function valve
- Quick-coupler diagnostic ports: Priority pressure / Hydraulic pump pressure / Control valve pressure / HST pressure

Operator's Station

- Cab (conforms to SAE J1040, SAE J231, ISO3471, ISO3449): ROPS/FOPS / Heater/defroster / Rubber-plane isolation mounted for noise/vibration reduction / Intermittent front and rear windshield wipers and washers / Tinted safety glass / Full-width

244J Operator's Station (continued)

- adjustable sun visor / Pre-wired for radio speakers / Deluxe high-back cloth seat with mechanical suspension and 2-inch (51 mm) retractable seat belt / Left and right doors / One sliding window in each door
- ▲ AM/FM/WB radio
- ▲ AM/FM/WB radio with cassette player
- ▲ AM/FM/WB radio with CD player
- ▲ Air conditioning (factory or dealer installed)
- Storage compartment
- Rubber floormat
- Tilt steering column
- Rearview mirrors, outside (2) and inside (1) (conform to SAE J985)
- Handholds and steps, ergonomically located and slip resistant (conform to SAE J185)

Loader Linkage

- Z-bar loader linkage
- Loader boom service locking bar (conforms to SAE J38)

Buckets and Attachments

- ▲ Full line of buckets with selection of bolt-on cutting edges
- Standard quick-coupler, less bucket
- ▲ Pallet fork for standard quick-coupler
- ▲ Worksite Pro™ skid-steer-style coupler
- ▲ Full line of construction utility forks, pallet forks, extendible boom with hook, and other attachments*

Tires

- 365/70R18 tires on single-piece rims
- ▲ 400/70R20 tires on single-piece rims

Other

- Fenders, front and rear
- Articulation locking bar (conforms to SAE J276)
- Vandal protection, includes lockable engine enclosure and fuel fill
- Counterweight, full
- Rear bottom guard
- Drawbar, with locking pin
- ▲ Material-weighing system*
- ▲ Ride control
- ▲ JDLink™ wireless communication system

CONTROL OWNING AND OPERATING COSTS

Customer Personal Service (CPS) is part of John Deere's proactive, fix-before-fail strategy on machine maintenance that will help control costs, increase profits, and reduce stress. Included in this comprehensive lineup of ongoing programs and services are:

Fluid analysis program – tells you what's going on inside *all* of your machine's major components so you'll know if there's a problem *before* you see a decline in performance. Fluid analysis is included in most extended coverage and preventive-maintenance agreements.

Component life-cycle data – gives you vital information on the projected life span of components and lets you make informed decisions on machine maintenance by telling you approximately how many hours of use you can expect from an engine, transmission, or hydraulic pump. This information can be used to preempt catastrophic downtime by servicing major components at about 80 percent of their life cycle.

Preventive Maintenance (PM) agreements – give you a fixed cost for maintaining a machine for a given period of time. They also help you avoid downtime by ensuring

that critical maintenance work gets done right and on schedule. On-site preventive maintenance service performed where and when you need it helps protect you from the expense of catastrophic failures and lets you avoid waste-disposal hassles.

Extended coverage – gives you a fixed cost for machine repairs for a given period of time so you can effectively manage costs. Whether you work in a severe-service setting or just want to spread the risk of doing business, this is a great way to custom-fit coverage for your operation. And an extended coverage contract also travels well because it's backed by John Deere and is honored by *all* Deere construction dealers.

Customer Support Advisors (CSAs) – Deere believes the CSA program lends a *personal* quality to Customer Personal Service (CPS). Certified CSAs have the knowledge and skills for helping make important decisions on machine maintenance and repair. Their mission is to help you implement a plan that's right for *your* business and take the burden of machine maintenance off your shoulders.



JOHN DEERE

DKA244JCWP Litho in U.S.A. (09-03)

Net engine power is with standard equipment including air cleaner, exhaust system, alternator, and cooling fan at test conditions per ISO9249. No derating is required up to 5,000-ft. (1500 m) altitude.

Specifications and design subject to change without notice. Wherever applicable, specifications are in accordance with SAE standards. Except where otherwise noted, these specifications are based on a unit with all standard equipment, 365/70R18 tires, ROPS cab, full fuel tank, and 175-lb. (79 kg) operator.



Free Manuals Download Website

<http://myh66.com>

<http://usermanuals.us>

<http://www.somanuals.com>

<http://www.4manuals.cc>

<http://www.manual-lib.com>

<http://www.404manual.com>

<http://www.luxmanual.com>

<http://aubethermostatmanual.com>

Golf course search by state

<http://golfingnear.com>

Email search by domain

<http://emailbydomain.com>

Auto manuals search

<http://auto.somanuals.com>

TV manuals search

<http://tv.somanuals.com>